

Insure Your Tech Cloud

The first Cloud Risk data product in the market



Insure Your Tech Cloud

A data product

Automated Risk Measurement for Cloud Risk technologies

- Calculates - Technology Risks - gives a rating **0-999**

At core a custom made risk analytics engine for technology cloud services - 100% automated.

All your technologies evaluated in one single place

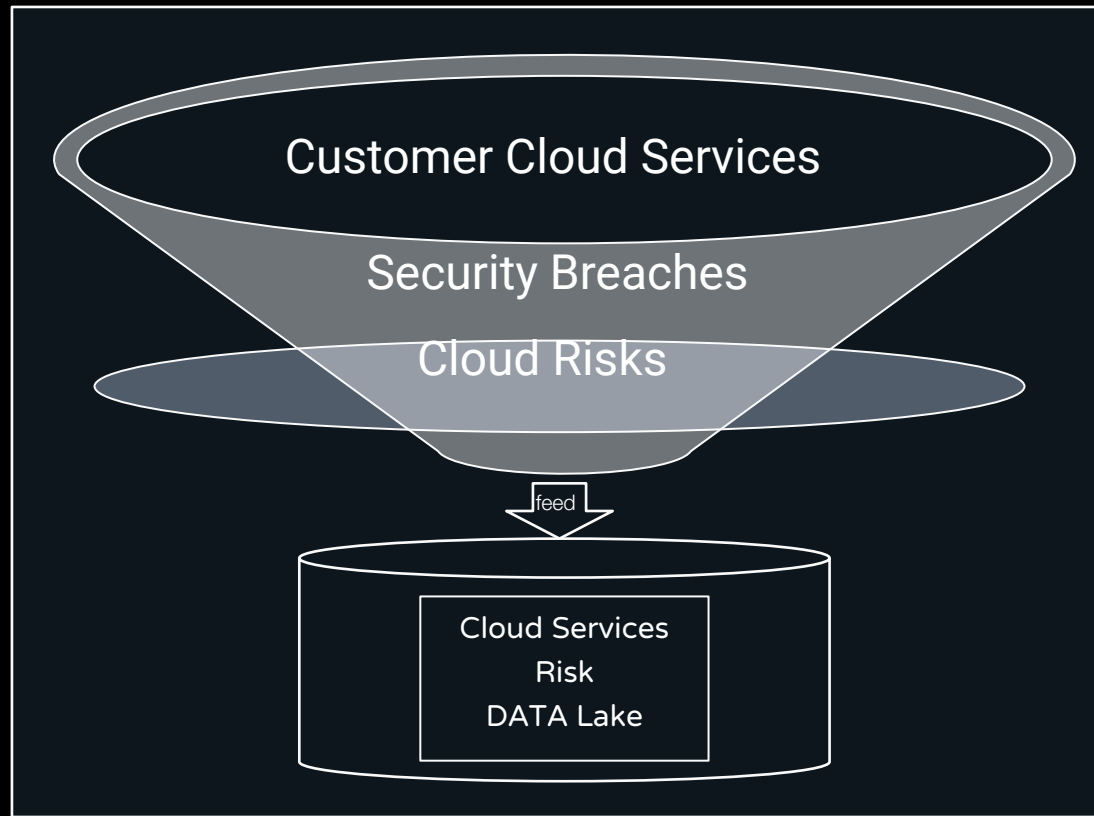
- **b2C** - Direct to Consumer - (Direct to end user customer transparent analysis)
 - Customer 360° view Panel
- **b2B** - Underwriters - Insurance policies - **b2B** (for Insurance companies)
 - Service Provider 360° view Panel



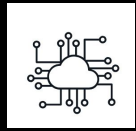
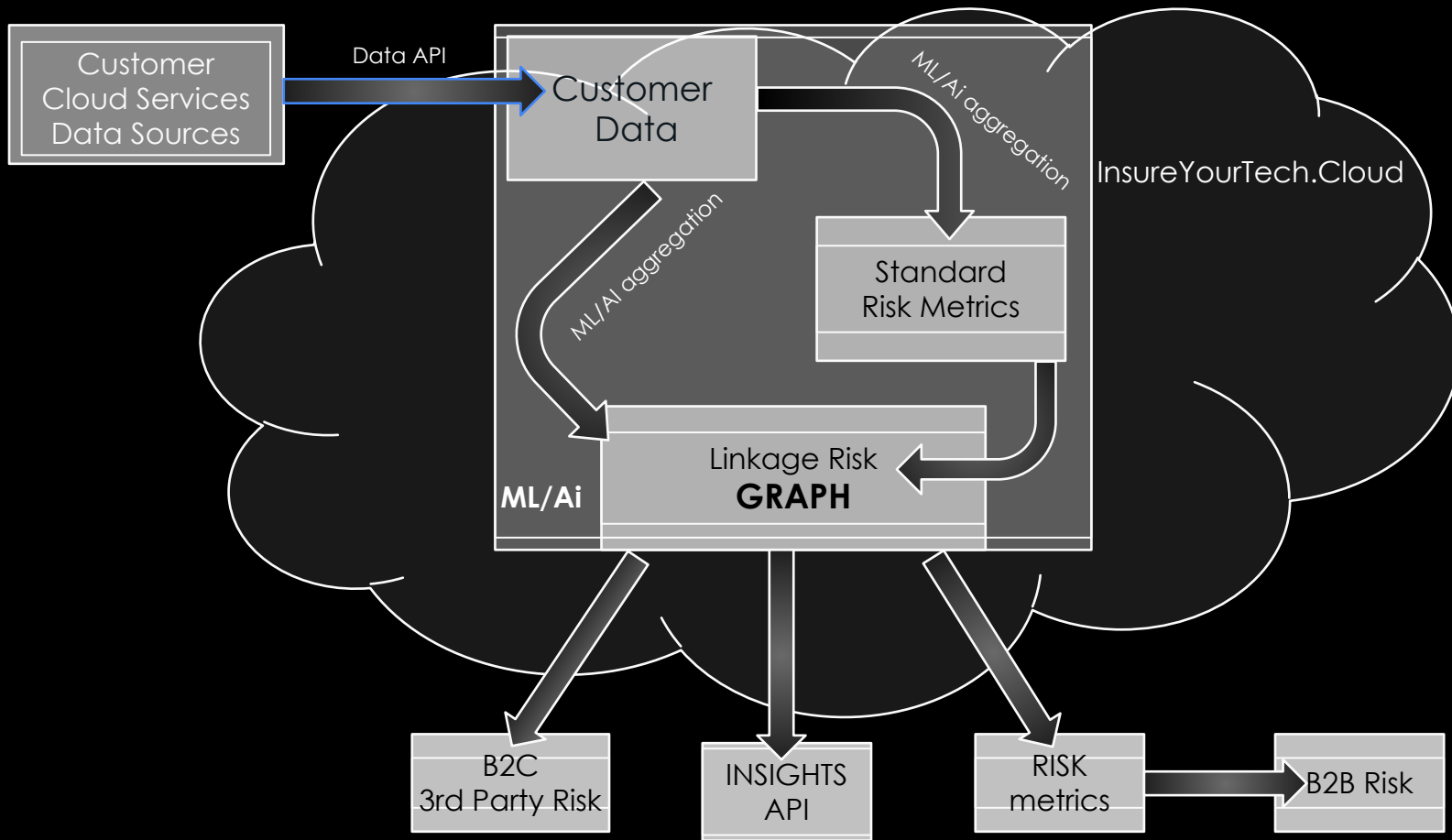
InsureYourTech.Cloud

DATA SOURCES:

- Technology Service providers
 - Cloud Solution provider
 - Azure , AWS , GCP
 - Cloud Content Deliveries
 - Akamai, CloudFlare
- Data Centers, CDNs, IPS
 - Outages & vulnerabilities
- Behavioral
 - Global risk graph 360 Analysis
- Scoring — Risk Measurement
 - - Services risk scoring



Cloud Risk Calculation DATA FLOW



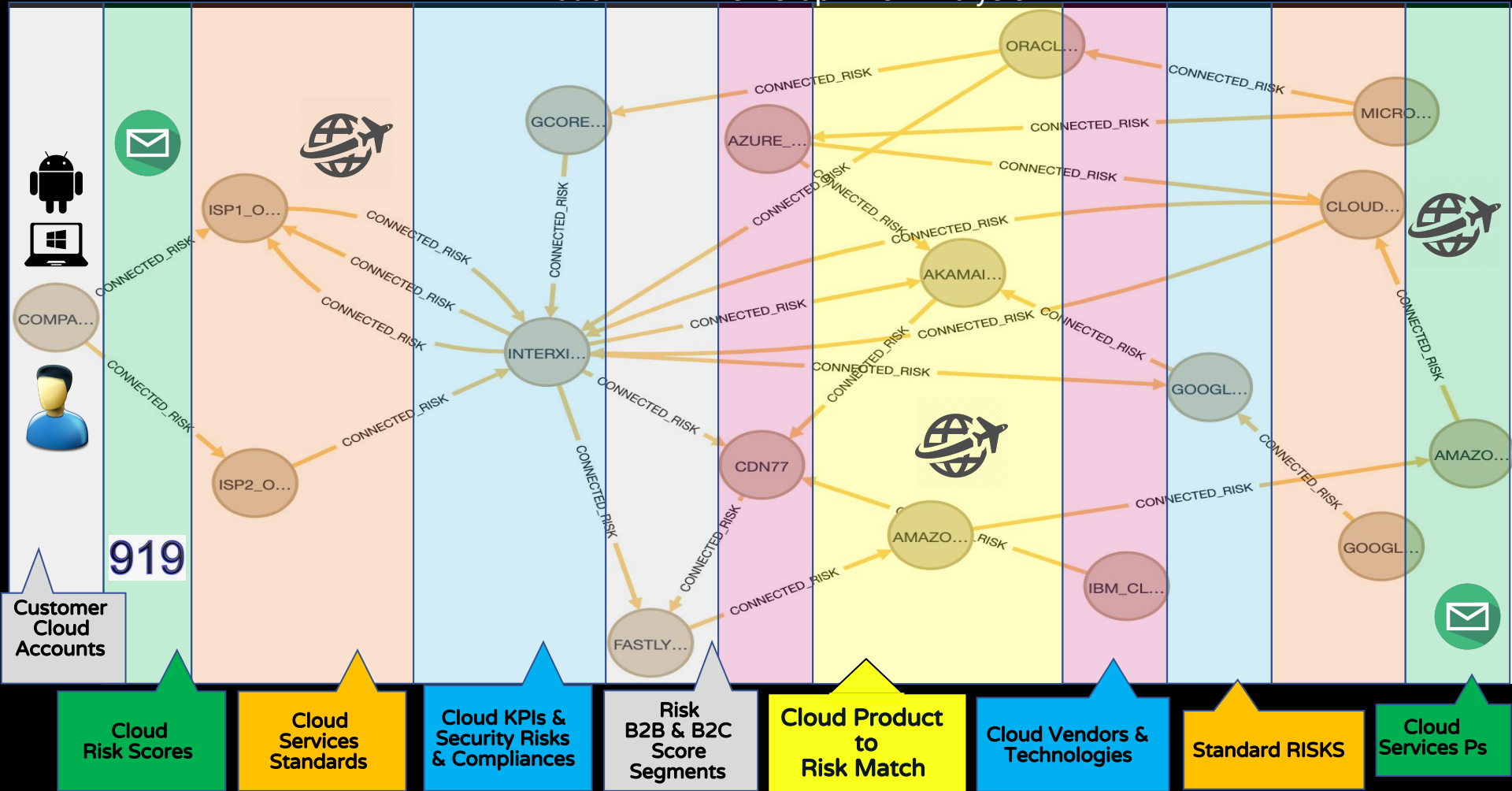
Understand **Cloud Risks** through their whole Tech.Cloud usage journey

Tech.cloud risk ratio 0-999

Cloud DDoS	APPLICATION RISK	Standard Analysis	Services Analysis
Services at DDoS Risk	Platform Agnostic checks: Authentication, Email, User Types, User Databases. All App analysis graph linked.	A standard framework capable to cross-compare different vendors of cloud	Connect Services and Interactions with User Insights. Leverage Unique Data Platform in the Cloud Engineering World.
PERSONALISE EXPERIENCE	Global Risk Analysis	B. I. INSIGHTS	UNDERSTANDING Use Cases
Insights API allows tailored properties to calculate risk B2C personalise	Anonymized Data used to enhance the Cloud Risk Calculation Engine.	Explore Relationships in Graph discover risk insights	Risk insights & Service grouping




Ratio=919 - B2C - Graph Risk Analysis




Cloud Risk-Simulation - B2C - Customer Cloud Risk Measurement

insureyourtech.cloud/cloudrisk-simulation

InsureYourTech.Cloud



CloudRisk.Simulation

More ▾ | 

CLOUD.RISK MEASUREMENT SIMULATION

Company Details

Company Name (required):

FuelBigData

Submission Project Name (optional):

Fuel_Applications_V1

Measure your Cloud.Risk via inserting Cloud Vendor and Service pairs

+ -

Pair 1 - Variable 1:

OCI

▾

Pair 1 - Variable 2:

AutonomousDB21C

▾

Pair 2 - Variable 1:

AWS

▾

Pair 2 - Variable 2:

AWS_Lambda

▾

Pair 3 - Variable 1:

GCP

▾

Pair 3 - Variable 2:

BigQuery

▾

Pair 4 - Variable 1:

IBM

▾

Pair 4 - Variable 2:

IBM_InformationSever

▾

Pair 5 - Variable 1:

Azure

▾

Pair 5 - Variable 2:

PowerBI_App

▾

Submit Data

'Cloud_Risk_Graph your Measured Cloud Risk RATIO for Cloud Vendor and Service pairs'

Cloud Risk-Simulation - B2C - Customer Submission Portal

Company Details

Company Name (required):

Submission Project Name (optional):

Measure your Cloud.Risk via inserting Cloud Vendor, Service, and Region Selection



Set 1 - Cloud Vendor:	<input type="text" value="Amazon AWS"/>	Service:	<input type="text" value="Amazon Elastic MapReduce"/>	Region:	<input type="text" value="global"/>
Set 2 - Cloud Vendor:	<input type="text" value="Google Cloud GCP"/>	Service:	<input type="text" value="Google Cloud VertexAI"/>	Region:	<input type="text" value="global"/>
Set 3 - Cloud Vendor:	<input type="text" value="Akamai"/>	Service:	<input type="text" value="CDN Akamai"/>	Region:	<input type="text" value="global"/>
Set 4 - Cloud Vendor:	<input type="text" value="Google Cloud GCP"/>	Service:	<input type="text" value="Google Cloud Apigee"/>	Region:	<input type="text" value="global"/>
Set 5 - Cloud Vendor:	<input type="text" value="Google Cloud GCP"/>	Service:	<input type="text" value="Google Cloud BigQuery"/>	Region:	<input type="text" value="global"/>
Set 6 - Cloud Vendor:	<input type="text" value="Microsoft Azure"/>	Service:	<input type="text" value="Azure PowerBI App"/>	Region:	<input type="text" value="global"/>

Cloud.Risk

Submit Data

Cloud.Risk Results:

Cloud Service	Global or by Region	Region	SLA Usage %	Traffic Coef %	SLA Deviation Risk Rating	Usage Risk Rating	Outage Time	Outage Remarks with GenAI
Amazon Elastic MapReduce	global		250.00%	0.13%	994.754	995.254	0 days 11h15 down	Llams3.2-B Outage Analysis - About last AWS EMR Outage - in context, on the provided text, I found some information about AWS service outages. Here are the details: 1. Amazon Simple Queue Service: • Outage: August 15 • Time of outage: 12:50 PM - 12:50 PM (PDT) = 0 minutes (resolved immediately) 2. AWS Service Catalog: • Outage: August 6 • Time of outage: 8:11 PM - 8:57 PM (PDT) = 46 minutes 3. Amazon Elastic MapReduce (EMR): • Outage: August 6 • Time of outage: 7:24 PM - 9:10 PM (PDT) = 1 hour 46 minutes 4. Multiple services: • Outage: July 30 • Time of outage: 3:40 PM - 9:55 PM (PDT) = 6 hours 15 minutes 5. AWS Internet Connectivity: • No recent issues found in the provided text. 6. Amazon Elastic Compute Cloud (EC2): • Outage: November 10 • Time of outage: 7:55 AM - 10:13 AM (PST) = 2 hours 18 minutes Please note that this is not an exhaustive list, and there may be other AWS services with outages that are not mentioned in the provided text.

Cloud Risk-Simulation - B2C - Customer Submission Portal

Set 5 - Cloud Vendor: Amazon AWS

Service: Amazon AWS Lambda

Region: global

Cloud.Risk

Submit Data

Cloud.Risk Results:

Cloud Service	Global or by Region	Region	SLA Usage %	Traffic Coef %	SLA Deviation Risk Rating	Usage Risk Rating	Outage Time	Outage Remarks with GenAI
Amazon Elastic MapReduce	global		250.00%	0.13%	994.754	995.254	0 days 11h15 down	Llama3.2-B Outage Analysis - About last AWS EMR Outage - in context, on the provided text, I found some information about AWS service outages. Here are the details: 1. Amazon Simple Queue Service - Outage: August 15 - Time of outage: 12:50 PM - 12:50 PM (PDT) = 0 minutes (resolved immediately) 2. AWS Service Catalog - Outage: August 6 - Time of outage: 8:11 PM - 8:57 PM (PDT) = 46 minutes 3. Amazon Elastic MapReduce (EMR) - Outage: August 6 - Time of outage: 7:24 PM - 9:10 PM (PDT) = 1 hour 46 minutes 4. Multiple services: - Outage: July 30 - Time of outage: 3:40 PM - 9:55 PM (PDT) = 6 hours 15 minutes 5. AWS Internet Connectivity: - No recent issues found in the provided text. 6. Amazon Elastic Compute Cloud (EC2): - Outage: November 10 - Time of outage: 7:55 AM - 10:13 AM (PST) = 2 hours 18 minutes Please note that this is not an exhaustive list, and there may be other AWS services with outages that are not mentioned in the provided text.
Azure Storage Accounts	global		4337.90%	0.43%	951.231	985.999	2 days down	Llama3.2-B Outage Analysis - About last Azure Storage Accounts Outage - in context, on the provided text, I found some information about Azure service outages. Here is a summary of the outage: On November 13, 2024, between 00:50 UTC and 12:30 UTC, a subset of Azure Blob Storage and Azure Data Lake Storage accounts experienced connectivity errors. The issue caused loss of access to Blob and Data Lake storage endpoints of the affected storage accounts, leading to unavailability of downstream services that depended on these storage accounts. The incident lasted for approximately 11 hours and 40 minutes, from 00:50 UTC to 12:30 UTC. The impacted services included: - Azure Log Analytics (delays and/or stale data in West Europe, Southeast Asia, and Korea Central regions) - Azure Container Registry (intermittent 5XX errors while trying to pull images from the East US region)
Azure PowerBi App	global		15364.45%	0.35%	831.605	967.918	5 days down	No details available
Amazon API Gateway	global		152.21%	0.08%	996.220	996.719	N/A	No details available
Amazon AWS Lambda	global		157.91%	0.08%	996.134	996.634	0 day 7h15 down	No details available

Understanding the Risk Ratings:

- SLA Usage %:** Measures the percentage of SLA the Service has used Year-to-date . A value of 100% means the Service has used 100% of its SLA .
- Traffic Coef %:** Measures the percentage of time the Service was down or degraded Tear-toDate. A value of 0% means the service was never down or degraded. A value of 100% means the service was always down or degraded.
- SLA Deviation Risk Rating:** Indicates Risk based on SLA discrepancies. Measures the likelihood of service level agreement deviations (0.0-999.0, where higher values indicate greater risk).
- Usage Risk Rating:** Indicates the operational risk based on service usage patterns (0.0-999.0, where higher values indicate greater risk).
- Outage Remarks:** AI-generated insights about potential service outages, disruptions and historical performance issues.

*Cloud.Risk.Graph - Measured Cloud.Risk RATIO for Cloud and Service pairs'

Cloud Risk-Simulation - B2C - Customer Submission Portal - Cloud.Risk.Graph

Cloud.Risk

Customer Portal App

New Cloud Risk Assessment

Cloud.Risk.Graph - Analysis

Company Name (required)
Fuel DataScience BigData Limited

Project Name (optional)
Project by Fuel DataScience BigData Limited

Select Cloud Vendors (up to 6)
Amazon AWS x Google Cloud GCP x Microsoft Azure x Akamai x MongoDB x Salesforce x

Select Services (up to 50)
Amazon API Gat... Amazon Bedrock... Amazon CloudFront... Amazon Elastic L... Amazon Elastic... Amazon QuickS... Amazon PinSpac... Amazon AWS La... Amazon AWS Cl... Amazon AWS St... Amazon S3 x Amazon Elastic... Google Cloud Ve... Google Cloud Ap... Google Cloud B... AlloyDB for Post... Google Cloud Da... Google Cloud Da... Google Cloud St... Google Cloud An... Google Kubernetes... Azure CDN x Azure Functions x Azure Batch x Azure PowerBI App... Azure Storage Ar... Azure Kubernetes... Citus Azure x Edge Computing... Security Advisor x MongoDB Atlas x MongoDB Atlas x... Salesforce SaaS x AWS IAM EMV Ser... Amazon Elastic... Amazon EC2 Inst... Amazon Dynam... Amazon Docum... Amazon DataZone x Amazon CloudDW...

Select Region Type
global

Analys Cloud Risk

View your Cloud Risk Graphs

New Cloud Risk Assessment

Cloud.Risk.Graph - Analysis

Company Name (required)
Fuel DataScience BigData Limited

Project Name (optional)
Project by Fuel DataScience BigData Limited

Select Cloud Vendors (up to 6)
Amazon AWS x Google Cloud GCP x Microsoft Azure x Akamai x MongoDB x Salesforce x

Select Services (up to 50)
Amazon API Gat... Amazon Bedrock... Amazon CloudFront... Amazon Elastic... Amazon Elastic L... Amazon Elastic... Amazon QuickS... Amazon PinSpac... Amazon AWS La... Amazon AWS Cl... Amazon AWS St... Amazon S3 x Amazon Elastic... Google Cloud Ve... Google Cloud Ap... Google Cloud B... AlloyDB for Post... Google Cloud Da... Google Cloud Da... Google Cloud St... Google Cloud An... Google Kubernetes... Azure CDN x Azure Functions x Azure Batch x Azure PowerBI App... Azure Storage Ar... Azure Kubernetes... Citus Azure x Edge Computing... Security Advisor x MongoDB Atlas x MongoDB Atlas x... Salesforce SaaS x AWS IAM EMV Ser... Amazon Elastic... Amazon EC2 Inst... Amazon Dynam... Amazon Docum... Amazon DataZone x Amazon CloudDW...

Select Region Type
global

Analys Cloud Risk

Risk Analysis Results

Generated Cypher query saved to neo4j_customer_submission/Cloud.Risk.Graph.CustomerApp.txt

Analysis for Amazon API Gateway	
SUA Usage %	Traffic Coefficient %
152.21%	0.08%
SUA Deviation Risk	Usage Risk Rating
996.220	996.719

Risk Analysis Results

Generated Cypher query saved to neo4j_customer_submission/Cloud.Risk.Graph.CustomerApp.txt

Analysis for Amazon API Gateway	
SUA Usage %	Traffic Coefficient %
152.21%	0.08%
SUA Deviation Risk	Usage Risk Rating
996.220	996.719

Analysis for Amazon Bedrock

SUA Usage %	Traffic Coefficient %
152.21%	0.08%
SUA Deviation Risk	Usage Risk Rating
996.220	996.719

Analysis for Amazon CloudFront

SUA Usage %	Traffic Coefficient %
152.21%	0.08%
SUA Deviation Risk	Usage Risk Rating
996.220	996.719

Analysis for Amazon Elastic MapReduce

SUA Usage %	Traffic Coefficient %
250.00%	0.13%
SUA Deviation Risk	Usage Risk Rating
994.754	995.254

Analysis: Amazon Elastic MapReduce

Literal2.2.8 Change Analysis

About last AWS EMR Outage - 30 content, on the provided text, I found some information about AWS service outages. Here are the details:
1. Amazon Simple Queue Service
- Outage: August 13
- Time of outage: 12:50 PM - 12:50 PM (PDT) - 0 minutes (resolved immediately)
2. AWS Service Catalog
- Outage: August 6
- Time of outage: 6:15 PM - 6:37 PM (PDT) - 46 minutes
3. Amazon Elastic MapReduce (EMR)
- Outage: August 6
- Time of outage: 7:24 PM - 9:33 PM (PDT) - 1 hour 46 minutes
4. Multiple services
- Outage: July 30
- Time of outage: 3:40 PM - 9:55 PM (PDT) - 6 hours 15 minutes
5. AWS Internet Connectivity
- No recent issues found in the provided text.
6. Amazon Elastic Compute Cloud (EC2)
- Outage: November 10
- Time of outage: 1:53 AM - 10:13 AM (PST) - 9 hours 18 minutes.
Please note that this is not an exhaustive list, and there may be other AWS services with outages that are not mentioned in the provided text.

Analysis for Amazon QuickSight

SUA Usage %	Traffic Coefficient %
41.10%	0.02%
SUA Deviation Risk	Usage Risk Rating
997.885	998.384

Analysis for Google Cloud VertexAI

SUA Usage %	Traffic Coefficient %
152.21%	0.08%
SUA Deviation Risk	Usage Risk Rating
996.220	996.719

Analysis: Google Cloud VertexAI

Literal2.2.8 Change Analysis

About last Google Cloud VertexAI Outage - 30 content, According to the text, the following Google Cloud services (GCP products) experienced outages:
1. Vertex AI Online Prediction
2. Dataflow CP
3. Agent Assist
The outage began on June 13, 2024, at 12:46 US/Pacific Time and ended on June 12, 2024, at 15:50 US/Pacific Time, which lasted for approximately 3 hours and 53 minutes.

Analysis for Google Cloud Airflow AP

SUA Usage %	Traffic Coefficient %
608.83%	0.06%
SUA Deviation Risk	Usage Risk Rating
992.210	997.175

Analysis: Google Cloud Airflow AP

Analysis for Azure Storage Accounts

SUA Usage %	Traffic Coefficient %
4337.90%	0.43%
SUA Deviation Risk	Usage Risk Rating
951.231	985.999

Analysis: Azure Storage Accounts

Literal2.2.8 Outage Analysis

About last Azure Storage Accounts Outage - 30 content, on the provided text, I found some information about Azure storage outages. Here is a summary of the outage:
On November 13, 2024, between 6:50 UTC and 12:30 UTC, a subset of Azure Blob Storage and Azure Data Lake Storage accounts experienced connectivity errors. The issue caused loss of access to Blob and Data Lake storage endpoints of the affected storage accounts, leading to unavailability of downstream services that depended on these storage accounts.
The incident lasted for approximately 12 hours and 40 minutes, from 05:50 UTC to 12:30 UTC. The impacted services included:
- Azure Log Analytics (delayed and/or stale data in West Europe, Southeast Asia, and Korea Central regions)
- Azure Container Registry (intermittent 500 errors while trying to pull images from the East US1 region)

Analysis for Azure Kubernetes Service (AKS)

SUA Usage %	Traffic Coefficient %
164.38%	0.82%
SUA Deviation Risk	Usage Risk Rating
984.152	974.367

Analysis: Azure Kubernetes Service (AKS)

Cloud Risk - Customer Automated - Risk Measurement

insureyourtech.cloud/cloudrisk-graph-showcase-1

cloudriskgraph.insureyourtech.cloud:8504/#new-cloud-risk-insurance-risk-measurement

InsureYourTech.Cloud

CLOUD RISK GRAPH - LONDON COMPANY - SHOWCASE

neo4j\$ MATCH p()-[]->() RETURN p LIMIT 250

Graph

Table

RAW

New Cloud Risk - Insurance Risk Measurement

Insert detailed information

for - TECHNOLOGY_PROVIDER

the - TECHNOLOGY_SOLUTION

Node Type

TECHNOLOGY_SOLUTION

By TECHNOLOGY_PROVIDER n TECHNOLOGY_SOLUTION's

1

TECHNOLOGY_PROVIDER 1 Key

TECHNOLOGY_SOLUTION 1 Name

Insert Record

View your Cloud Risk Graphs

Select:

Choose an option

Explore All Cloud Risk Graph - Records

Go to <http://cloudriskgraph.insureyourtech.cloud:17474/> - Explore your cloud services risk graph.

CloudRisk.Graph.Workbench.Cloud.Outage.Extraction - GenAI

Database Information

Use database

neo4j

Node labels

*(1,157)

Answer

PdfBotChunk

Question

Tag

User

Relationship types

*(1,146)

ANSWERS

ASKED

PROVIDED

TAGGED

Property keys

body

creation_date

display_name

embedding

favorite_count

id

is_accepted

link

name

reputation

score

text

title

Connected as

Username: neo4j

Roles: -

Disconnect: server disconnect

DBMS

Version: 5.25.1

Edition: Community

Name: neo4j

neo4j\$

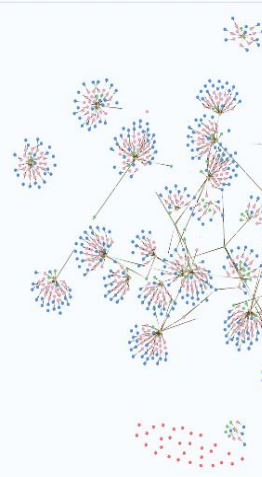
neo4j\$ MATCH (n) RETURN n LIMIT 1200

Graph

Table

Text

Code

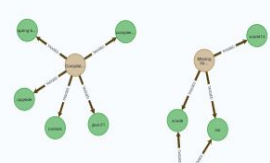


neo4j\$ MATCH p=()->()->() RETURN p LIMIT

Graph

Table

Text



Not Secure cloudriskgraph.insureyourtech.cloud:8503

Extract Cloud Outage information from your pdf source file

Upload your PDF

Drag and drop file here

Limit 200MB per file • PDF

Browse files

Azure_status_history_Microsoft_Azure_p2_2024.pdf 1.0MB

X

Request outage information from your upload pdf file

Ask Questions? e.g. From the loaded pdf, What Azure Cloud Services are here identified and what outages the service had?

What Azure Cloud Services are here identified ?

The Azure cloud services mentioned in the text are:

1. Azure NetApp Files
2. Azure Policy
3. Azure Resource Manager (ARM)
4. Azure Site Recovery
5. Azure SQL Database
6. Azure Virtual Desktop
7. Managed identities for Azure resources
8. Microsoft Entra Domain Services
9. Microsoft Entra Global Secure Access
10. Microsoft Entra ID
11. Microsoft Graph

Additionally, the text mentions various other Azure services that were impacted by the outage, including:

- Azure API Management
- Azure Application Insights
- Azure Cognitive Services
- Azure Communication Services
- Azure Cosmos DB
- Azure Databricks
- Azure Event Grid
- Azure Front Door
- Azure Key Vault
- Azure Monitor
- Azure NetApp Files (again)
- Azure Policy (again)
- Azure Resource Manager (ARM) (again)
- Azure Site Recovery (again)
- Azure SQL Database (again)
- Azure Virtual Desktop (again)

Note that this is not an exhaustive list of all Azure services, but rather a list of the specific services

CloudRisk.Graph.Showcase-1

cloudriskgraph.insureyourtech.cloud:8504/#new-cloud-risk-insurance-risk-measurement

New Cloud Risk - Insurance Risk Measurement

Insert detailed information

for - TECHNOLOGY_PROVIDER

the - TECHNOLOGY_SOLUTION

Node Type

TECHNOLOGY_SOLUTION

By TECHNOLOGY_PROVIDER n TECHNOLOGY_SOLUTION's

1

TECHNOLOGY_PROVIDER 1 Key

TECHNOLOGY_SOLUTION 1 Name

Insert Record

View your Cloud Risk Graphs

Select:

Choose an option

Explore All Cloud Risk Graph - Records

Go to <http://cloudriskgraph.insureyourtech.cloud:17474/> - Explore your cloud services risk graph.

Not Secure cloudriskgraph.insureyourtech.cloud:8503/#workbench-app-3

Workbench App_3

PDF_BOT - Extract Cloud Outage information from your pdf source file

Upload your PDF



Drag and drop file here

Limit 200MB per file • PDF

Browse files



Google_Cloud_Service_Health_-_12.June.2024.pdf 251.8KB



Request outage information from your upload pdf file

Ask Questions? e.g. From the loaded pdf, What Azure Cloud Services are here identified and what outages the service had?

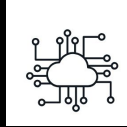
Google cloud services GCP products can you identify here with outages ? and how long was the outage?

According to the text, the following Google Cloud services (GCP products) experienced outages:

1. Vertex AI Online Prediction
2. Dialogflow CX
3. Agent Assist

The outage began on June 12, 2024, at 12:06 US/Pacific Time and ended on June 12, 2024, at 15:59 US/Pacific Time, which lasted for approximately 3 hours and 53 minutes.

InsureYourTech.Cloud



Data Product
by
FuelBigData.com



Thank You !

Contact us

business@insureyourtech.cloud

[InsureYourTech.cloud](https://insureyourtech.cloud)



UK - London

