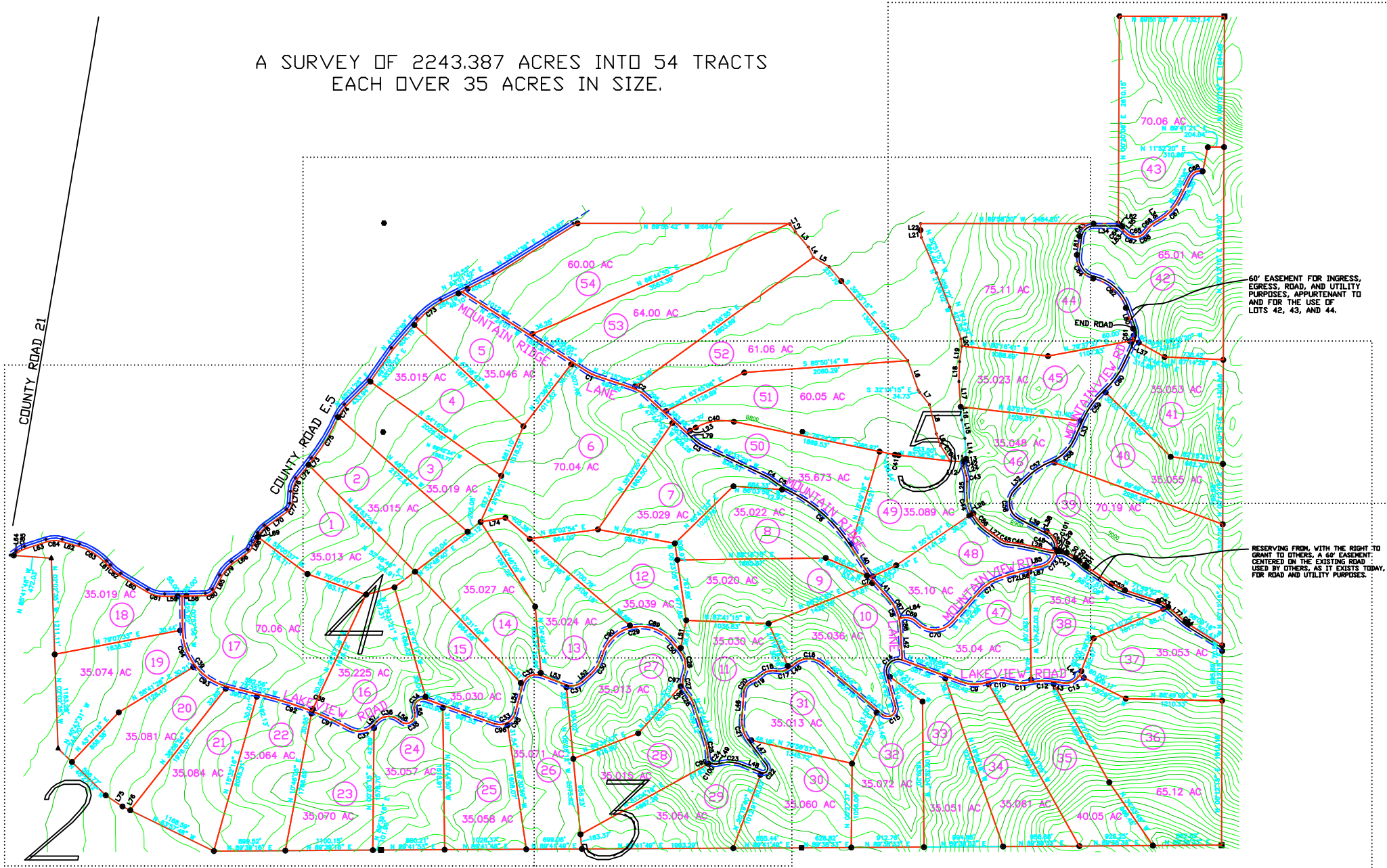


A SURVEY OF 2243.387 ACRES INTO 54 TRACTS
EACH OVER 35 ACRES IN SIZE.



MOUNTAIN LAKE RANCH

Amended Plat for MOUNTAIN LAKE RANCH

SHEET 2 - LOTS 1 THRU 3, and 12 THRU 28

LEGEND

These standard symbols may be found in the drawing.

EC, BC, OR ANGLE POINT ON CENTERLINE OF ROAD - SET 5/8" REBAR WITH PLASTIC CAP STAMPED LS 20122

FOUND 5/8" REBAR WITH ALUMINUM CAP STAMPED LS 6274 PER PLAT AT BK 22, PG 78

SET 5/8" REBAR WITH ALUMINUM CAP STAMPED LS 20122

FOUND 1/2" REBAR WITH PLASTIC CAP STAMPED LS 22583

FOUND 3/4" REBAR WITH 3.25" ALUMINUM CAP STAMPED LS 22583

FOUND ORIGINAL STONE PROPERLY MARKED IN GOOD CONDITION

FOUND 5/8" REBAR WITH ALUMINUM CAP STAMPED LS 2281

SURVEYED TRACT BOUNDARIES

SIDELINE COUNTY ROAD

SECTION LINES

TOPOGRAPHIC LINES

TOPOGRAPHIC DATA SHOWN HEREON IS FROM A TOPO DEPOT CD, AND WAS NOT VERIFIED IN THE FIELD FOR THIS SURVEY.
DIMENSIONS ON LOT LINES ARE TO CENTERLINE OF ROAD
DIMENSION BY MONUMENT AT ROAD IS DISTANCE TO CENTERLINE

NOTES:

1. ALL TRACTS SHOWN ON THIS PLAT SHALL BE SUBJECT TO ALL COVENANTS AND RESTRICTIONS AS SET FORTH IN THE DOCUMENT RECORDED IN BOOK 378 AT PAGES 810 & 811, ON MARCH 10, 2004, RECEPTION # 230027 OF OFFICIAL COSTILLA COUNTY RECORDS, AND THE CERTIFICATE OF AMENDMENT RECORDED IN BOOK 382 AT PAGE 901 JUNE 1, 2004, RECEPTION # 230103, AND IN THE AMENDED COVENANTS, CONDITIONS AND RESTRICTIONS RECORDED IN BOOK 382 AT PAGES 901 & 902, ON AUGUST 1, 2004, RECEPTION # 230103.
2. NO UTILITIES ARE BEING PROVIDED TO ANY TRACT SHOWN ON THIS PLAT.
3. EVERY PURCHASER OF A TRACT SHALL RECEIVE A COPY OF SAID RECORDED COVENANTS AND THIS SURVEY PLAT, AND SHALL SIGN THAT THEY HAVE READ, UNDERSTAND, AND AGREE WITH SAME.
4. THE PURCHASER OF EACH TRACT SHALL BE RESPONSIBLE FOR HAVING THE SEPTIC DISPOSAL SYSTEM DESIGNED, INSTALLED, AND IMPROVED IN ACCORDANCE WITH ALL GOVERNING LAWS AND REGULATIONS OF THE STATE OF COLORADO AND OF COSTILLA COUNTY.
5. THE RACK ON THE SIDELINE OF EASEMENTS AT INTERSECTIONS IS 25.00'.

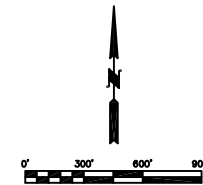
CURVE	RADIUS	ARC LENGTH	CHORD LENGTH	CHORD BEARING	DELTA ANGLE
C1	800.00	120.83	150.00	N 44°19'24" E	120.83°
C2	150.00	15.71	15.71	N 71°15'28" W	15.71°
C3	200.00	19.63	19.63	N 32°02'54" E	19.63°
C4	100.00	9.82	9.82	N 78°41'34" W	9.82°
C5	150.00	15.71	15.71	N 35°07'20" E	15.71°
C6	200.00	19.63	19.63	N 82°02'54" E	19.63°
C7	100.00	9.82	9.82	N 78°41'34" W	9.82°
C8	150.00	15.71	15.71	N 35°07'20" E	15.71°
C9	200.00	19.63	19.63	N 82°02'54" E	19.63°
C10	100.00	9.82	9.82	N 78°41'34" W	9.82°
C11	150.00	15.71	15.71	N 35°07'20" E	15.71°
C12	200.00	19.63	19.63	N 82°02'54" E	19.63°
C13	100.00	9.82	9.82	N 78°41'34" W	9.82°
C14	150.00	15.71	15.71	N 35°07'20" E	15.71°
C15	200.00	19.63	19.63	N 82°02'54" E	19.63°
C16	100.00	9.82	9.82	N 78°41'34" W	9.82°
C17	150.00	15.71	15.71	N 35°07'20" E	15.71°
C18	200.00	19.63	19.63	N 82°02'54" E	19.63°
C19	100.00	9.82	9.82	N 78°41'34" W	9.82°
C20	150.00	15.71	15.71	N 35°07'20" E	15.71°
C21	200.00	19.63	19.63	N 82°02'54" E	19.63°
C22	100.00	9.82	9.82	N 78°41'34" W	9.82°
C23	150.00	15.71	15.71	N 35°07'20" E	15.71°
C24	200.00	19.63	19.63	N 82°02'54" E	19.63°
C25	100.00	9.82	9.82	N 78°41'34" W	9.82°
C26	150.00	15.71	15.71	N 35°07'20" E	15.71°
C27	200.00	19.63	19.63	N 82°02'54" E	19.63°
C28	100.00	9.82	9.82	N 78°41'34" W	9.82°
C29	150.00	15.71	15.71	N 35°07'20" E	15.71°
C30	200.00	19.63	19.63	N 82°02'54" E	19.63°
C31	100.00	9.82	9.82	N 78°41'34" W	9.82°
C32	150.00	15.71	15.71	N 35°07'20" E	15.71°
C33	200.00	19.63	19.63	N 82°02'54" E	19.63°
C34	100.00	9.82	9.82	N 78°41'34" W	9.82°
C35	150.00	15.71	15.71	N 35°07'20" E	15.71°
C36	200.00	19.63	19.63	N 82°02'54" E	19.63°
C37	100.00	9.82	9.82	N 78°41'34" W	9.82°
C38	150.00	15.71	15.71	N 35°07'20" E	15.71°
C39	200.00	19.63	19.63	N 82°02'54" E	19.63°
C40	100.00	9.82	9.82	N 78°41'34" W	9.82°
C41	150.00	15.71	15.71	N 35°07'20" E	15.71°
C42	200.00	19.63	19.63	N 82°02'54" E	19.63°
C43	100.00	9.82	9.82	N 78°41'34" W	9.82°
C44	150.00	15.71	15.71	N 35°07'20" E	15.71°
C45	200.00	19.63	19.63	N 82°02'54" E	19.63°
C46	100.00	9.82	9.82	N 78°41'34" W	9.82°
C47	150.00	15.71	15.71	N 35°07'20" E	15.71°
C48	200.00	19.63	19.63	N 82°02'54" E	19.63°
C49	100.00	9.82	9.82	N 78°41'34" W	9.82°
C50	150.00	15.71	15.71	N 35°07'20" E	15.71°
C51	200.00	19.63	19.63	N 82°02'54" E	19.63°
C52	100.00	9.82	9.82	N 78°41'34" W	9.82°
C53	150.00	15.71	15.71	N 35°07'20" E	15.71°
C54	200.00	19.63	19.63	N 82°02'54" E	19.63°
C55	100.00	9.82	9.82	N 78°41'34" W	9.82°
C56	150.00	15.71	15.71	N 35°07'20" E	15.71°
C57	200.00	19.63	19.63	N 82°02'54" E	19.63°
C58	100.00	9.82	9.82	N 78°41'34" W	9.82°
C59	150.00	15.71	15.71	N 35°07'20" E	15.71°
C60	200.00	19.63	19.63	N 82°02'54" E	19.63°
C61	100.00	9.82	9.82	N 78°41'34" W	9.82°
C62	150.00	15.71	15.71	N 35°07'20" E	15.71°
C63	200.00	19.63	19.63	N 82°02'54" E	19.63°
C64	100.00	9.82	9.82	N 78°41'34" W	9.82°
C65	150.00	15.71	15.71	N 35°07'20" E	15.71°
C66	200.00	19.63	19.63	N 82°02'54" E	19.63°
C67	100.00	9.82	9.82	N 78°41'34" W	9.82°
C68	150.00	15.71	15.71	N 35°07'20" E	15.71°
C69	200.00	19.63	19.63	N 82°02'54" E	19.63°
C70	100.00	9.82	9.82	N 78°41'34" W	9.82°
C71	150.00	15.71	15.71	N 35°07'20" E	15.71°
C72	200.00	19.63	19.63	N 82°02'54" E	19.63°
C73	100.00	9.82	9.82	N 78°41'34" W	9.82°
C74	150.00	15.71	15.71	N 35°07'20" E	15.71°
C75	200.00	19.63	19.63	N 82°02'54" E	19.63°
C76	100.00	9.82	9.82	N 78°41'34" W	9.82°
C77	150.00	15.71	15.71	N 35°07'20" E	15.71°
C78	200.00	19.63	19.63	N 82°02'54" E	19.63°
C79	100.00	9.82	9.82	N 78°41'34" W	9.82°
C80	150.00	15.71	15.71	N 35°07'20" E	15.71°
C81	200.00	19.63	19.63	N 82°02'54" E	19.63°
C82	100.00	9.82	9.82	N 78°41'34" W	9.82°
C83	150.00	15.71	15.71	N 35°07'20" E	15.71°
C84	200.00	19.63	19.63	N 82°02'54" E	19.63°
C85	100.00	9.82	9.82	N 78°41'34" W	9.82°
C86	150.00	15.71	15.71	N 35°07'20" E	15.71°
C87	200.00	19.63	19.63	N 82°02'54" E	19.63°
C88	100.00	9.82	9.82	N 78°41'34" W	9.82°
C89	150.00	15.71	15.71	N 35°07'20" E	15.71°
C90	200.00	19.63	19.63	N 82°02'54" E	19.63°
C91	100.00	9.82	9.82	N 78°41'34" W	9.82°
C92	150.00	15.71	15.71	N 35°07'20" E	15.71°
C93	200.00	19.63	19.63	N 82°02'54" E	19.63°
C94	100.00	9.82	9.82	N 78°41'34" W	9.82°
C95	150.00	15.71	15.71	N 35°07'20" E	15.71°
C96	200.00	19.63	19.63	N 82°02'54" E	19.63°
C97	100.00	9.82	9.82	N 78°41'34" W	9.82°
C98	150.00	15.71	15.71	N 35°07'20" E	15.71°
C99	200.00	19.63	19.63	N 82°02'54" E	19.63°
C100	100.00	9.82	9.82	N 78°41'34" W	9.82°

CURVE	RADIUS	ARC LENGTH	CHORD LENGTH	CHORD BEARING	DELTA ANGLE
C1	800.00	120.83	150.00	N 44°19'24" E	120.83°
C2	150.00	15.71	15.71	N 71°15'28" W	15.71°
C3	200.00	19.63	19.63	N 32°02'54" E	19.63°
C4	100.00	9.82	9.82	N 78°41'34" W	9.82°
C5	150.00	15.71	15.71	N 35°07'20" E	15.71°
C6	200.00	19.63	19.63	N 82°02'54" E	19.63°
C7	100.00	9.82	9.82	N 78°41'34" W	9.82°
C8	150.00	15.71	15.71	N 35°07'20" E	15.71°
C9	200.00	19.63	19.63	N 82°02'54" E	19.63°
C10	100.00	9.82	9.82	N 78°41'34" W	9.82°
C11	150.00	15.71	15.71	N 35°07'20" E	15.71°
C12	200.00	19.63	19.63	N 82°02'54" E	19.63°
C13	100.00	9.82	9.82	N 78°41'34" W	9.82°
C14	150.00	15.71	15.71	N 35°07'20" E	15.71°
C15	200.00	19.63	19.63	N 82°02'54" E	19.63°
C16	100.00	9.82	9.82	N 78°41'34" W	9.82°
C17	150.00	15.71	15.71	N 35°07'20" E	15.71°
C18	200.00	19.63	19.63	N 82°02'54" E	19.63°
C19	100.00	9.82	9.82	N 78°41'34" W	9.82°
C20	150.00	15.71	15.71	N 35°07'20" E	15.71°
C21	200.00	19.63	19.63	N 82°02'54" E	19.63°
C22	100.00	9.82	9.82	N 78°41'34" W	9.82°
C23	150.00	15.71	15.71	N 35°07'20" E	15.71°
C24	200.00	19.63	19.63	N 82°02'54" E	19.63°
C25	100.00	9.82	9.82	N 78°41'34" W	9.82°
C26	150.00	15.71	15.71	N 35°07'20" E	15.71°
C27	200.00	19.63	19.63	N 82°02'54" E	19.63°
C28	100.00	9.82	9.82	N 78°41'34" W	9.82°
C29	150.00	15.71	15.71	N 35°07'20" E	15.71°
C30	200.00	19.63	19.63	N 82°02'54" E	19.63°
C31	100.00	9.82	9.82	N 78°41'34" W	9.82°
C32	150.00	15.71	15.71	N 35°07'20" E	15.71°
C33	200.00	19.63	19.63	N 82°02'54" E	19.63°
C34	100.00	9.82	9.82	N 78°41'34" W	9.82°
C35	150.00	15.71	15.71	N 35°07'20" E	15.71°
C36	200.00	19.63	19.63	N 82°02'54" E	19.63°
C37	100.00	9.82	9.82	N 78°41'34" W	9.82°
C38	150.00	15.71	15.71	N 35°07'20" E	15.71°
C39	200.00	19.63	19.63	N 82°02'54" E	19.63°
C40	100.00	9.82	9.82	N 78°41'34" W	9.82°
C41	150.00	15.71	15.71	N 35°07'20" E	15.71°
C42	200.00	19.63	19.63	N 82°02'54" E	19.63°
C43	100.00	9.82	9.82	N 78°41'34" W	9.82°
C44	150.00	15.71	15.71	N 35°07'20" E	15.71°
C45	200.00	19.63	19.63	N 82°02'54" E	19.63°
C46	100.00	9.82	9.82	N 78°41'34" W	9.82°
C47	150.00	15.71	15.71	N 35°07'20" E	15.71°
C48	200.00	19.63	19.63	N 82°02'54" E	19.63°
C49	100.00	9.82	9.82	N 78°41'34" W	9.82°
C50	150.00	15.71	15.71	N 35°07'20" E	15.71°
C51	200.00	19.63	19.63	N 82°02'54" E	19.63°
C52	100.00	9.82	9.82	N 78°41'34" W	9.82°
C53	150.00	15.71	15.71	N 35°07'20" E	15.71°
C54	200.00	19.63	19.63	N 82°02'54" E	19.63°
C55	100.00	9.82	9.82	N 78°41'34" W	9.82°
C56	150.00	15.71	15.71	N 35°07'20" E	15.71°
C57	200.00	19.63	19.63	N 82°02'54" E	19.63°
C58	100.00	9.82	9.82	N 78°41'34" W	9.82°
C59	150.00	15.71	15.71	N 35°07'20" E	15.71°
C60	200.00	19.63	19.63	N 82°02'54" E	19.63°
C61	100.00	9.82	9.82	N 78°41'34" W	9.82°

[illegible]

FOUR CORNERS SURVEYING INC.			
21100 COUNTY ROAD 4, CORTEZ, COLORADO 81321			
(970) - 882 - 4361			
Amended Plat MOUNTAIN LAKE RANCH - SHEET 4,			
LOTS 2 thru 9, 46, and 48 thru 54			
DRAWN	DATE	COLORADO LAND AND	
A/BOUGHT	07-20-06	RANCHES, INC.	
APPROVED	DATE	2423 E. MAIN STREET, STE. 5	
		CORTEZ, COLORADO 81321	
SCALE	SHEET	PROJECT	
1 INCH = 300 FEET	4 OF 5	638P06744AL20-06DRG	

LINE	BEARING	DISTANCE
17	N 77°27'30" E	353.50
18	N 77°27'30" E	371.40
19	N 77°10'00" E	371.40
20	N 19°17'45" E	157.87
21	N 24°03'45" E	238.33
22	N 24°03'45" E	238.33
23	N 24°03'45" E	238.33
24	N 19°17'45" E	157.87
25	N 07°05'15" E	238.33
26	N 07°05'15" E	238.33
27	N 06°08'15" E	238.33
28	N 07°05'15" E	238.33
29	N 07°05'15" E	238.33
30	N 07°05'15" E	238.33
31	N 07°05'15" E	238.33
32	N 07°05'15" E	238.33
33	N 07°05'15" E	238.33
34	N 07°05'15" E	238.33
35	N 07°05'15" E	238.33
36	N 07°05'15" E	238.33
37	N 07°05'15" E	238.33
38	N 07°05'15" E	238.33
39	N 07°05'15" E	238.33
40	N 07°05'15" E	238.33
41	N 07°05'15" E	238.33
42	N 07°05'15" E	238.33
43	N 07°05'15" E	238.33
44	N 07°05'15" E	238.33
45	N 07°05'15" E	238.33
46	N 07°05'15" E	238.33
47	N 07°05'15" E	238.33
48	N 07°05'15" E	238.33
49	N 07°05'15" E	238.33
50	N 07°05'15" E	238.33
51	N 07°05'15" E	238.33
52	N 07°05'15" E	238.33
53	N 07°05'15" E	238.33
54	N 07°05'15" E	238.33
55	N 07°05'15" E	238.33
56	N 07°05'15" E	238.33
57	N 07°05'15" E	238.33
58	N 07°05'15" E	238.33
59	N 07°05'15" E	238.33
60	N 07°05'15" E	238.33
61	N 07°05'15" E	238.33
62	N 07°05'15" E	238.33
63	N 07°05'15" E	238.33
64	N 07°05'15" E	238.33
65	N 07°05'15" E	238.33
66	N 07°05'15" E	238.33
67	N 07°05'15" E	238.33
68	N 07°05'15" E	238.33
69	N 07°05'15" E	238.33
70	N 07°05'15" E	238.33
71	N 07°05'15" E	238.33
72	N 07°05'15" E	238.33
73	N 07°05'15" E	238.33
74	N 07°05'15" E	238.33
75	N 07°05'15" E	238.33
76	N 07°05'15" E	238.33
77	N 07°05'15" E	238.33
78	N 07°05'15" E	238.33
79	N 07°05'15" E	238.33
80	N 07°05'15" E	238.33
81	N 07°05'15" E	238.33
82	N 07°05'15" E	238.33
83	N 07°05'15" E	238.33
84	N 07°05'15" E	238.33
85	N 07°05'15" E	238.33
86	N 07°05'15" E	238.33
87	N 07°05'15" E	238.33
88	N 07°05'15" E	238.33
89	N 07°05'15" E	238.33
90	N 07°05'15" E	238.33
91	N 07°05'15" E	238.33
92	N 07°05'15" E	238.33
93	N 07°05'15" E	238.33
94	N 07°05'15" E	238.33
95	N 07°05'15" E	238.33
96	N 07°05'15" E	238.33
97	N 07°05'15" E	238.33
98	N 07°05'15" E	238.33
99	N 07°05'15" E	238.33
100	N 07°05'15" E	238.33



1. ALL TRACTS SHOWN ON THIS PLAT SHALL BE SUBJECT TO ALL COVENANTS AND RESTRICTIONS AS SET FORTH IN THE DOCUMENT RECORDED IN BOOK 375 AT PAGE 816 OF 819, ON MARCH 10, 2004, RECEPTION # 238027 OF OFFICIAL COSTILLA COUNTY RECORDS AND THE CERTIFICATE OF AMENDMENT RECORDED IN BOOK 375 AT PAGE 819 OF 819, 2004, RECEPTION # 243103.
2. AND IN THE AMENDED COVENANTS, CONDITIONS AND RESTRICTIONS RECORDED BOOK _____ AT PAGES _____, ON AUGUST 1, 2006,
- RECEPTION # _____
3. NO UTILITIES ARE BEING PROVIDED TO ANY TRACT SHOWN ON THIS PLAT.
4. EVERY PURCHASER OF A TRACT SHALL RECEIVE A COPY OF SAID RECORDED COVENANTS AND THIS SURVEY PLAT AND SHALL SIGN AND AGREE WITH SAME, READ, UNDERSTAND, AND AGREE WITH SAME.
5. THE PURCHASER OF EACH TRACT SHALL BE RESPONSIBLE FOR HAVING THE SEPTIC DISPOSAL SYSTEM DETERMINED, INSTALLED, AND INSPECTED IN ACCORDANCE WITH ALL APPLICABLE LAWS AND REGULATIONS OF THE STATE OF COLORADO AND OF COSTILLA COUNTY.
6. THE RADI ON THE SLOPELINE OF EASEMENTS AT INTERSECTIONS IS 25.00'.

[illegible]

These standard symbols may be found in the drawing.

- EC, BC, OR ANGLE POINT ON CENTERLINE OF ROAD - SET 5/8" REBAR WITH PLASTIC CAP STAMPED LS 20122
- FOUND 5/8" REBAR WITH ALUMINUM CAP STAMPED LS 6274 PER PLAT AT BK 22, PG 78
- SET 5/8" REBAR WITH ALUMINUM CAP STAMPED LS 20122
- FOUND 5/8" REBAR WITH PLASTIC CAP STAMPED LS 22583
- FOUND 3/4" REBAR WITH 3.25" ALUMINUM CAP STAMPED LS 22583
- FOUND ORIGINAL STONE PROPERLY MARKED IN GOOD CONDITION
- ▲ FOUND 5/8" REBAR WITH ALUMINUM CAP STAMPED LS 2281
- SURVEYED TRACT BOUNDARIES
- SIDEWALK COUNTY ROAD
- SECTION LINES
- TOPOGRAPHIC LINES

TOPOGRAPHIC DATA SHOWN HEREON IS FROM A TOPO DEPOT CD, AND
WAS NOT VERIFIED IN THE FIELD FOR THIS SURVEY.

DIMENSIONS ON LOT LINES ARE TO CENTERLINE OF ROAD
DIMENSION BY MONUMENT AT ROAD IS DISTANCE TO CENTERLINE

FOUR CORNERS SURVEYING INC.	
21180 COUNTY ROAD 100, COLORADO 81321	
(970) 882 6341	
Amended Plat MOUNTAIN LAKE RANCH - SHEET 5, LOTS 40 thru 45	
DRAWN BY/OUT	DATE 07-20-06
APPROVED BY	DATE
COLORADO LAND AND RANCHES, INC. 2423 E. MAIN STREET, STE. 5 CORTEZ, COLORADO 81321	
SCALE 1 INCH = 300 FEET	SHEET 5 OF 5
PROJECT NO. 638PH2HS7A5L20-06LW0	