



Certificate of Analysis

Jul 08, 2020 | Terre Haute Cannabis

PO Box 51
Riley, IN, 47871, USA



Sample: M000706016-001

Harvest/Lot ID: A720

Seed to Sale #N/A

Batch Date :N/A

Batch#: CWBI07012020

Sample Size Received: 10 ml

Retail Product Size: 30 ml

Ordered : 06/30/20

Sampled : 06/30/20

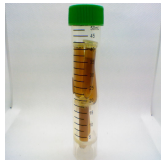
Completed: 07/08/20 Expires: 07/08/21

Sampling Method: SOP Client Method

PASSED

Page 1 of 1

PRODUCT IMAGE





SAFETY RESULTS


Pesticides
NOT TESTED


Heavy Metals
NOT TESTED


Microbials
NOT TESTED


Mycotoxins
NOT TESTED


Residuals
Solvents
NOT TESTED


Filtration
NOT TESTED


Water Activity
NOT TESTED


Moisture
NOT TESTED


Terpenes
NOT TESTED

MISC.

CANNABINOID RESULTS



Total THC
0.232%

THC/Container :64.874 mg



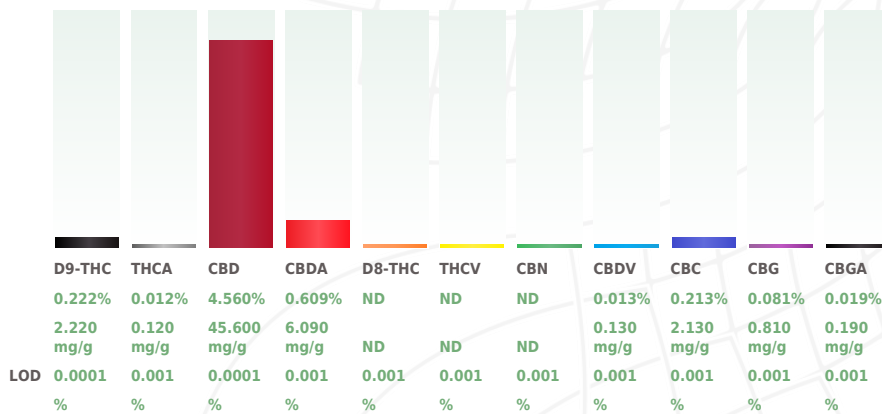
Total CBD
5.094%

CBD/Container :1421.252 mg



Total Cannabinoids
5.728%

Total Cannabinoids/Container
:1598.391 mg



Cannabinoid Profile Test

Analyzed by : 19 Weight : 3.0141g Extraction date : 07/07/20 10:07:02 Extracted By : 19

Analysis Method - SOP.T.40.020, SOP.T.30.050 Reviewed On - 07/08/20 11:39:58
Analytical Batch - M0000733POT Instrument Used : HPLC Potency Analyzer Batch Date : 07/06/20 11:41:36

Reagent : Dilution : 40 Consums. ID :

Full spectrum cannabinoid analysis utilizing High Performance Liquid Chromatography with UV detection (HPLC-UV). (Method: SOP.T.30.050 for sample prep and Shimadzu High Sensitivity Method SOP.T.40.020 for analysis. LOQ for all cannabinoids is 1 mg/L). Measurement of Uncertainty: 2.7%

This report shall not be reproduced, unless in its entirety, without written approval from Kaycha Labs. This report is an Kaycha Labs certification. The results relate only to the material or product analyzed. Test results are confidential unless explicitly waived otherwise. Void after 1 year from test end date. Cannabinoid content of batch material may vary depending on sampling error. IC=In-control QC parameter, NC=Non-controlled QC parameter, ND=Not Detected, NA=Not Analyzed, ppm=Parts Per Million, ppb=Parts Per Billion. Limit of Detection (LoD) and Limit Of Quantitation (LoQ) are terms used to describe the smallest concentration that can be reliably measured by an analytical procedure. RPD=Reproducibility of two measurements. Action Levels are State determined thresholds for human safety for consumption and/or inhalation. The result >99% are variable based on uncertainty of measurement (UM) for the analyte. The UM error is available from the lab upon request. The "Decision Rule" for the pass/fail does not include the UM. The limits are based on F.S. Rule 64-4.310.

David Greene
Lab Director

State License # 19-05-02P
ISO Accreditation #
17025:2017



Signature

07/08/2020

Signed On