



Certificate of Analysis

Sample: M000727003-001

Harvest/Lot ID: B720

Seed to Sale #N/A

Batch Date :N/A

Batch#: CWBH07012020

Sample Size Received: 10 ml

Retail Product Size: 30 ml

Ordered : 07/24/20

Sampled : 07/24/20

Completed: 07/29/20 Expires: 07/29/21

Sampling Method: SOP Client Method

PASSED

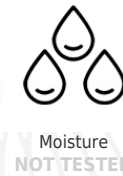
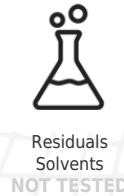
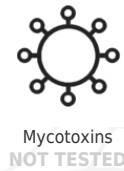
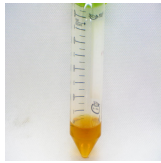
Page 1 of 1

Jul 29, 2020 | Terre Haute Cannabis

PO Box 51
Riley, IN, 47871, USA



PRODUCT IMAGE SAFETY RESULTS



MISC.

CANNABINOID RESULTS



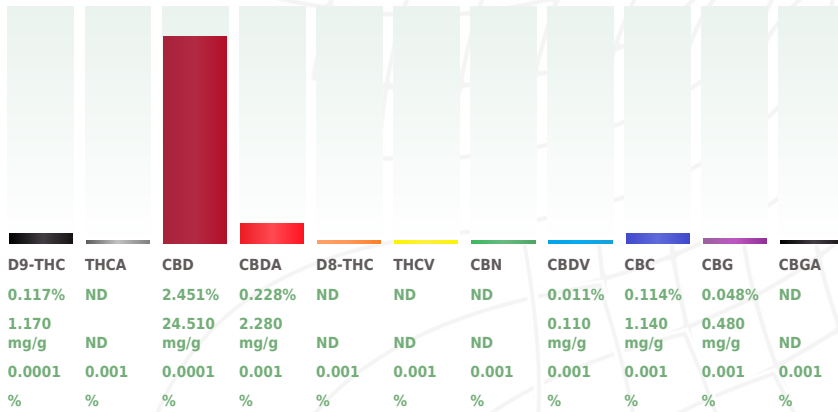
Total THC
0.117%
THC/Container :32.643 mg



Total CBD
2.650%
CBD/Container :739.617 mg



Total Cannabinoids
2.969%
Total Cannabinoids/Container :828.351 mg



Cannabinoid Profile Test

Analyzed by 19	Weight 3.0020g	Extraction date : NA	Extracted By : NA
Analysis Method -SOP.T.40.020, SOP.T.30.050		Reviewed On - 07/29/20 15:45:55	
Analytical Batch -M0000847POT		Instrument Used : HPLC Potency Analyzer Batch Date : 07/27/20 12:27:52	
Reagent	Dilution 40	Consums. ID	

Full spectrum cannabinoid analysis utilizing High Performance Liquid Chromatography with UV detection (HPLC-UV). (Method: SOP.T.30.050 for sample prep and Shimadzu High Sensitivity Method SOP.T.40.020 for analysis. LOQ for all cannabinoids is 1 mg/L). Measurement of Uncertainty: 2.7%

This report shall not be reproduced, unless in its entirety, without written approval from Kaycha Labs. This report is an Kaycha Labs certification. The results relate only to the material or product analyzed. Test results are confidential unless explicitly waived otherwise. Void after 1 year from test end date. Cannabinoid content of batch material may vary depending on sampling error. IC=In-control QC parameter, NC=Non-controlled QC parameter, ND=Not Detected, NA=Not Analyzed, ppm=Parts Per Million, ppb=Parts Per Billion. Limit of Detection (LoD) and Limit Of Quantitation (LoQ) are terms used to describe the smallest concentration that can be reliably measured by an analytical procedure. RPD=Reproducibility of two measurements. Action Levels are State determined thresholds for human safety for consumption and/or inhalation. The result >99% are variable based on uncertainty of measurement (UM) for the analyte. The UM error is available from the lab upon request. The "Decision Rule" for the pass/fail does not include the UM. The limits are based on F.S. Rule 64-4.310.

David Greene
Lab Director



Signature

07/29/2020

State License # 19-05-02P
ISO Accreditation #
17025:2017 #97164

Signed On