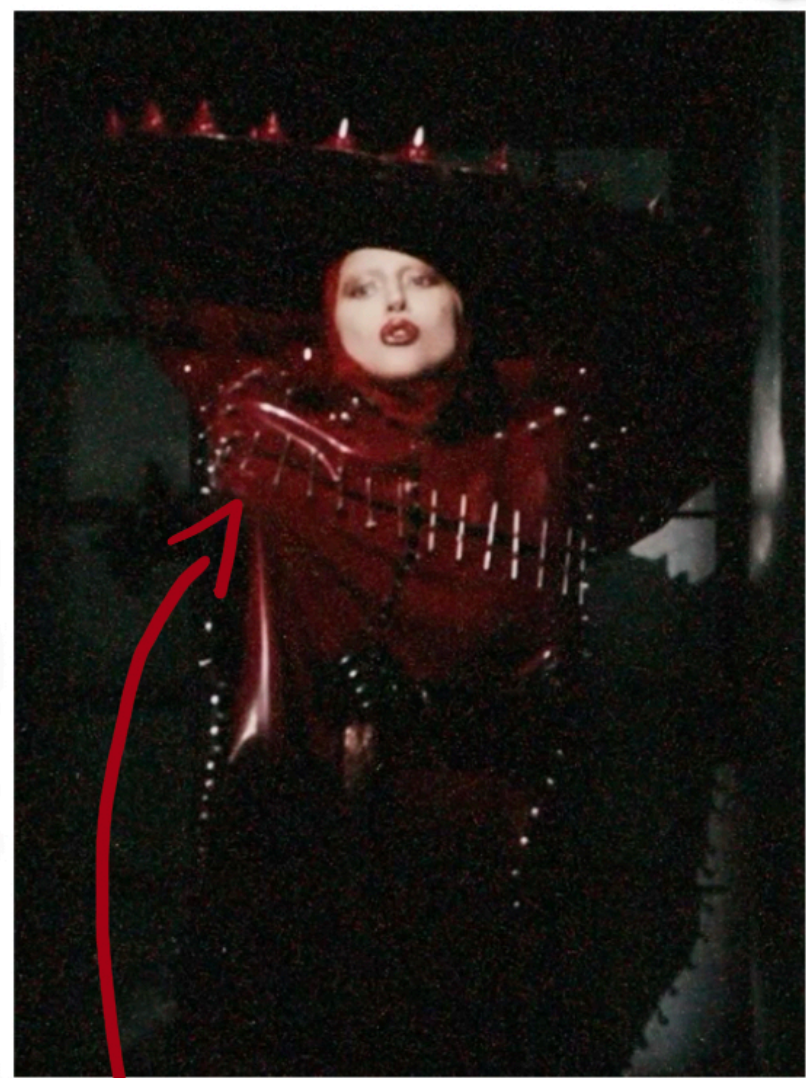


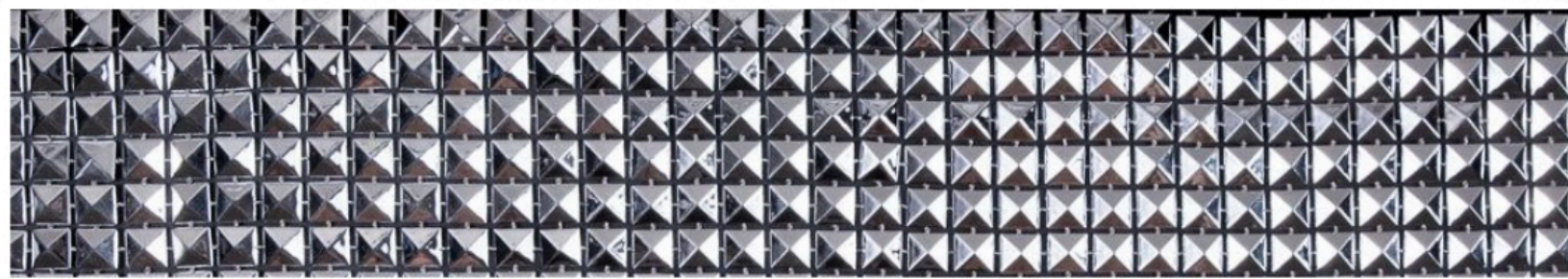


Costume Design Character Study
Lady Gaga: Mayhem Ball
by Eleana Garcia



latex and silver metal elements

"Mayhem" is Lady Gaga's seventh studio album. Lady Gaga is an American singer who first rose to fame with her album "The Fame," and throughout her career she has become known for her theatrical, eccentric costumes that push the boundaries of fabric and non fabric materials.



spikey stud trim for a silver accent

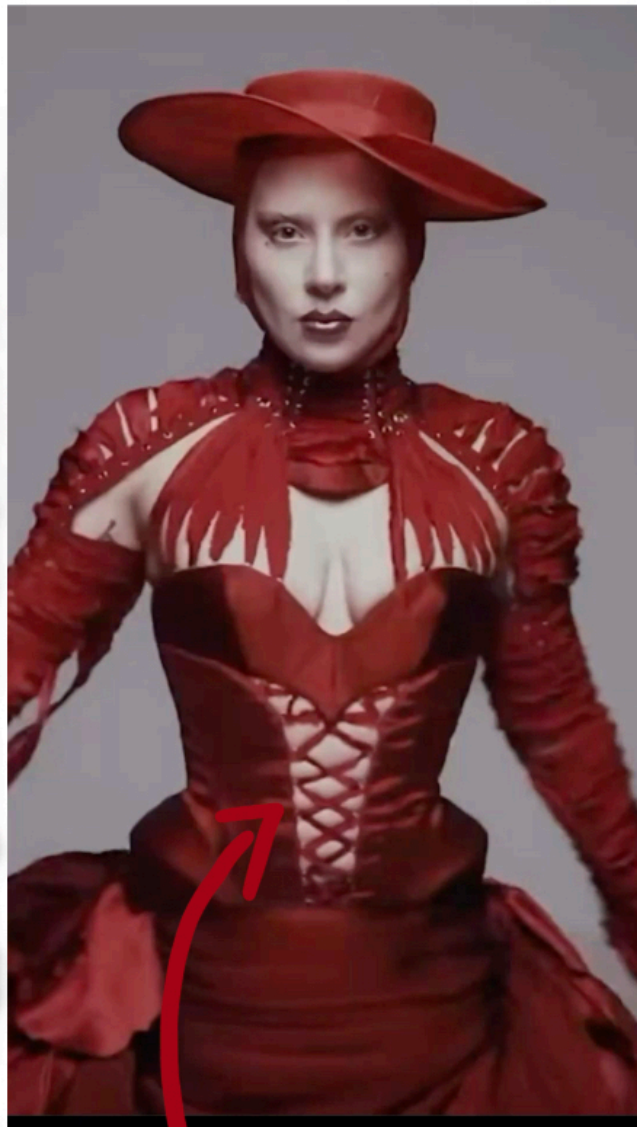
"Mayhem" represents Gaga's return to "classic" dark Gaga pop that first made her famous. Her lyrics focus on her experiences with mental health and her recent physical health challenges after being diagnosed with fibromyalgia. She is daring and experimental with her costume silhouettes, and she expresses the different stages of her struggles with her looks.



full lace ensemble with gloves

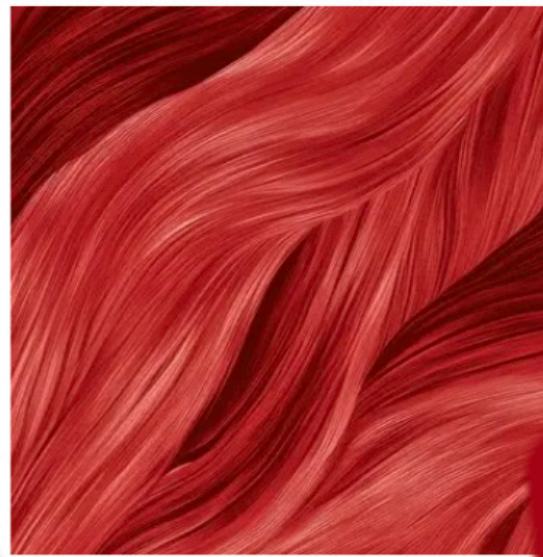


Fibromyalgia is a chronic illness that results in extreme muscle fatigue and pain. By revealing her diagnosis and highlighting disabilities in her album work, she hopes to destigmatize the disorder and empower disabled people. She has always set out to speak out about disenfranchised communities and give them a voice.

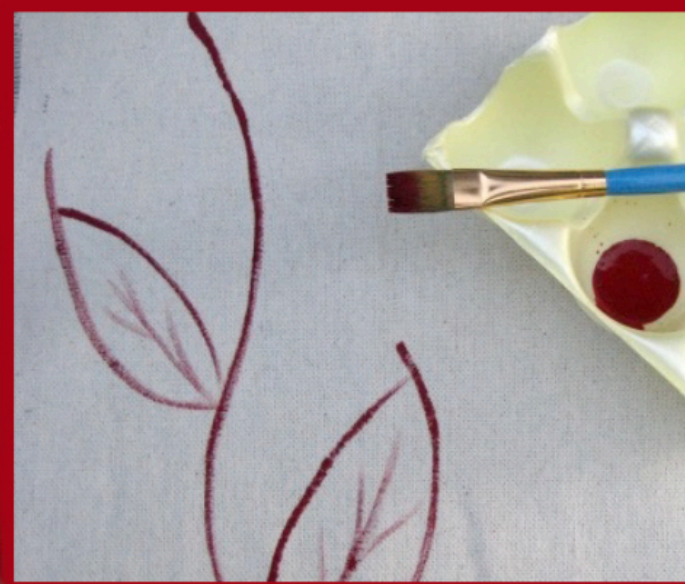


lace up bodice and grommets

exaggerated, extended shoulder shape



In medical illustrations, muscle texture is depicted as red curvy strokes. This pattern has inspired me to try a new technique, fabric painting, to create curvy strokes for a section of the bodysuit.



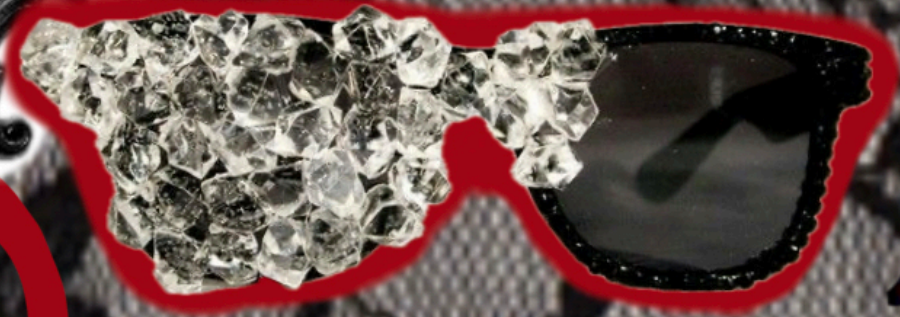
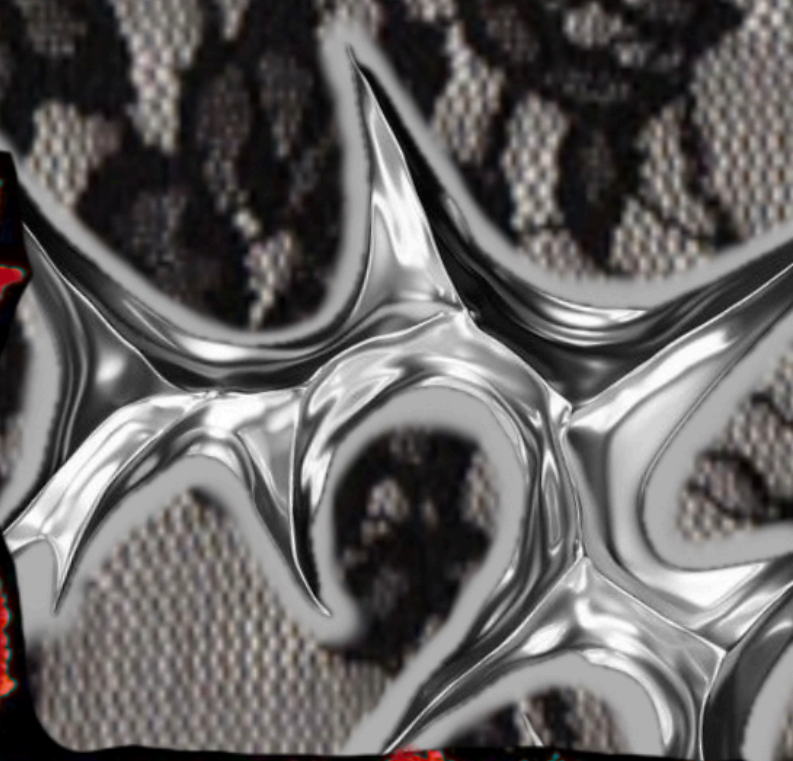
This Mayhem Ball look features a bodysuit and detachable cape with a hood. Including a detachable element would be ideal to create adaptable looks that can serve different purposes. One look can work well for both a still singing moment and a long dance sequence.

Lady Gaga also includes visual metaphors in her work. Here, she is facing a "past" version of herself; a part of her that ran away from herself and was afraid. By facing herself, she is expressing that we can coexist with our past selves and not hold hatred towards the person we used to be. This metaphor inspires me to create designs that show a contrast between lightness and darkness.

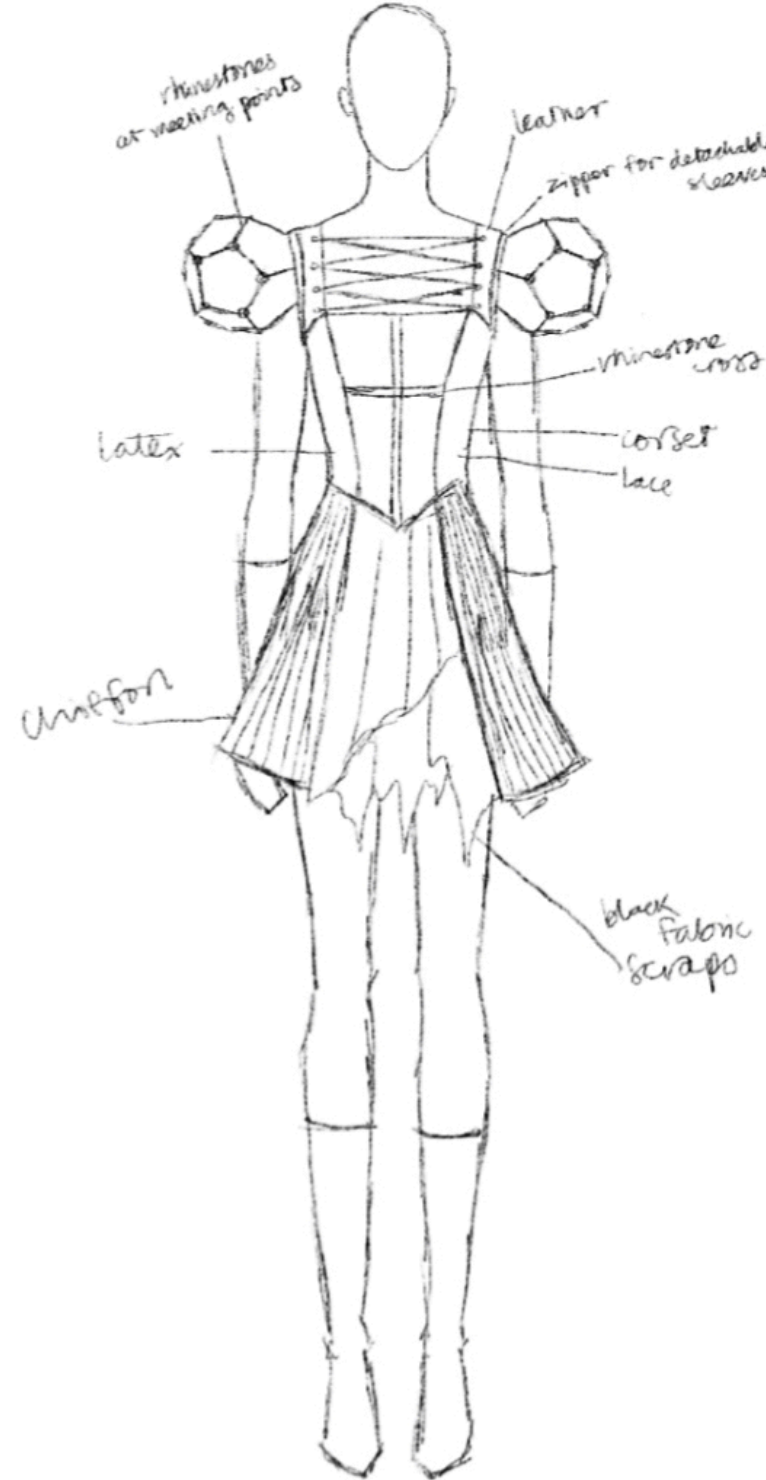
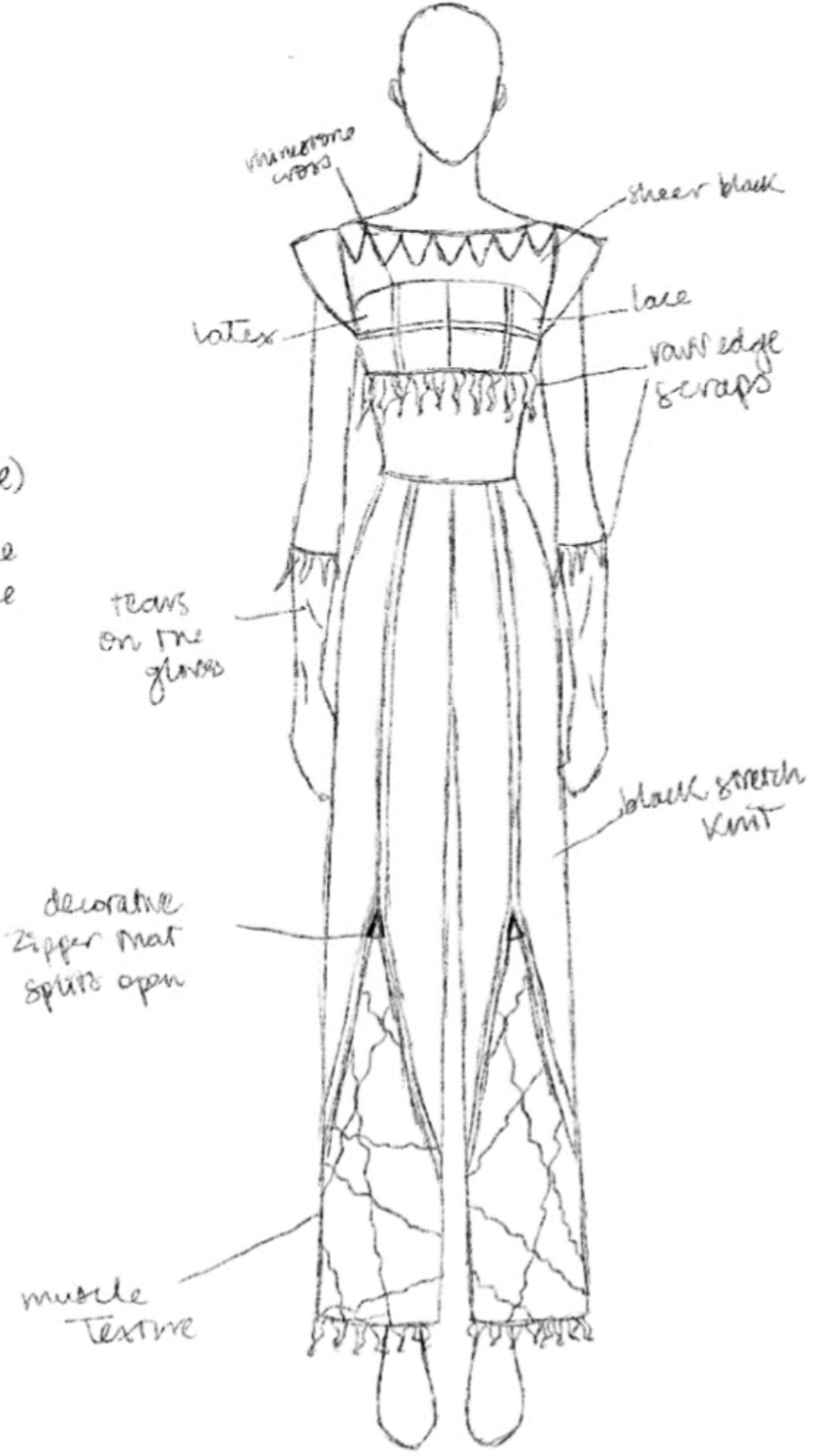
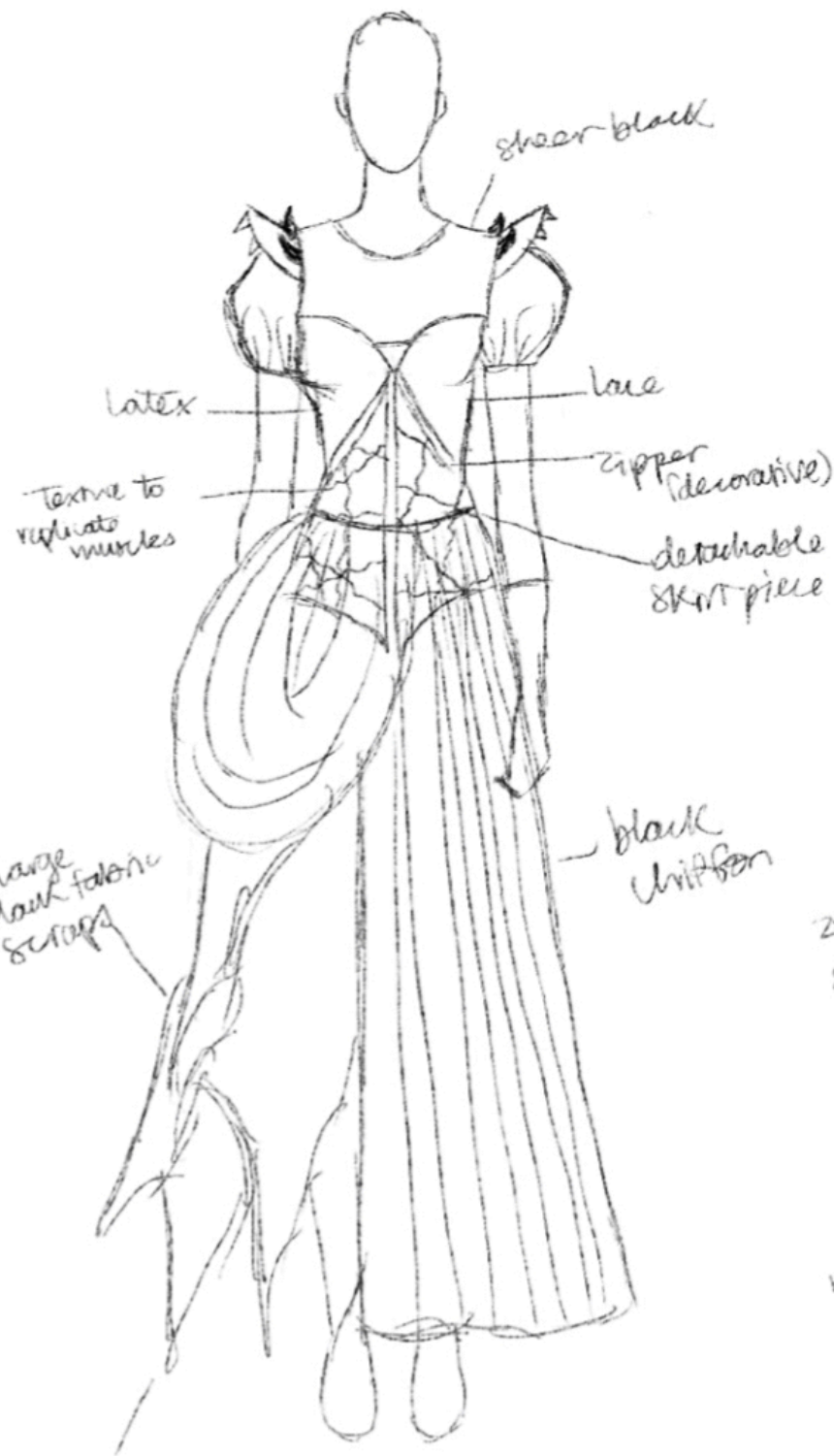




L
V
D
M
V
Y
I
G
A
G
G
A



Initial Sketches

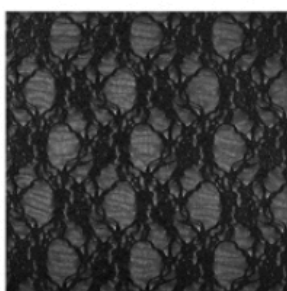


could be detachable
lace from bust down instead

Final Design and Fabric Board



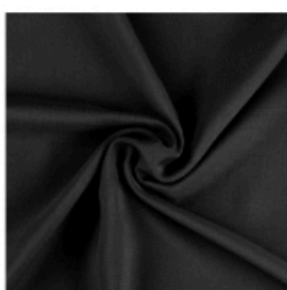
Stretch Vinyl Spandex



Stretch Black Lace



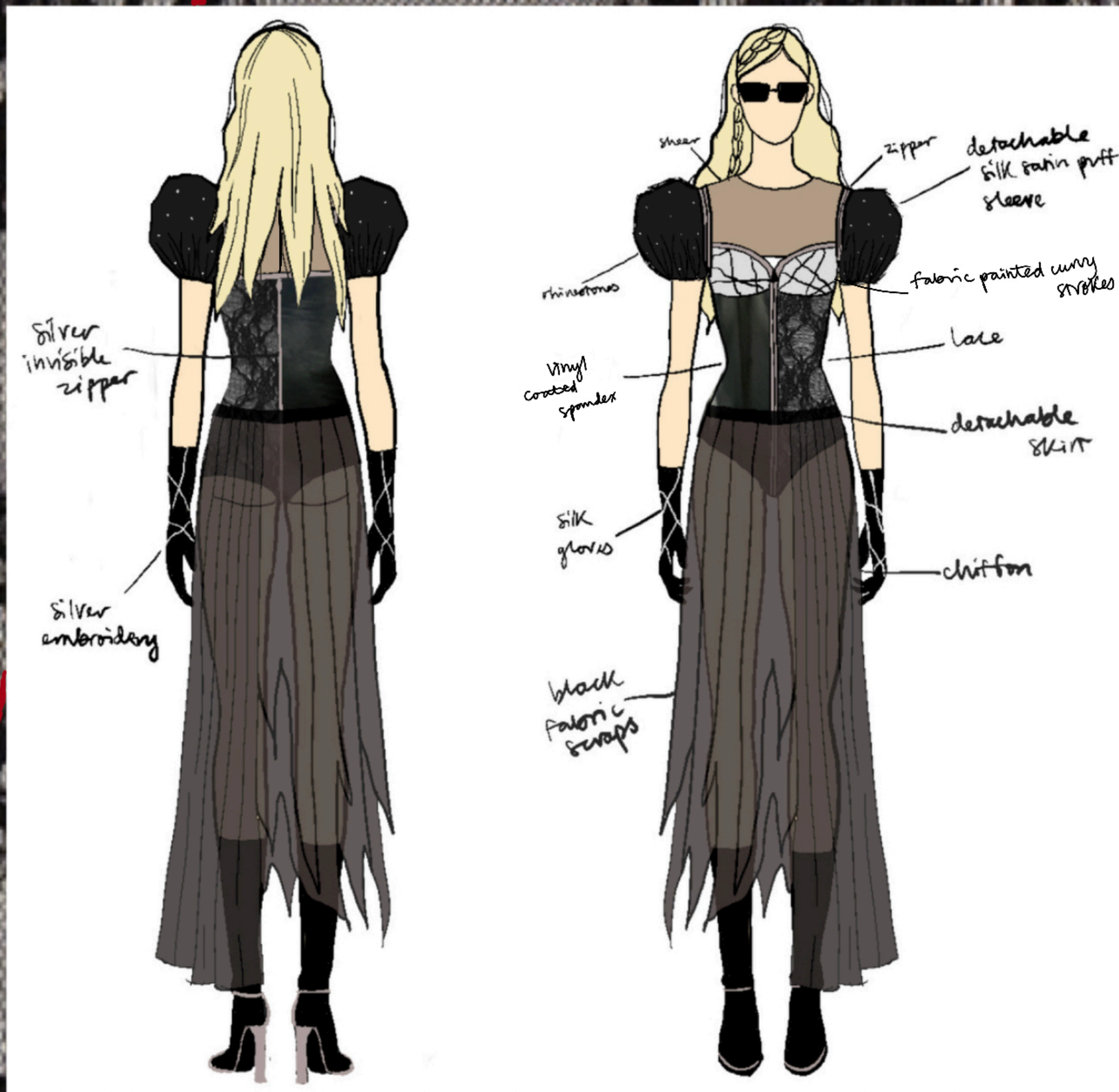
Stretch Black Mesh



Black Poly Chiffon



Stretch Black Matte Satin



Process Page

Muslin Prototype



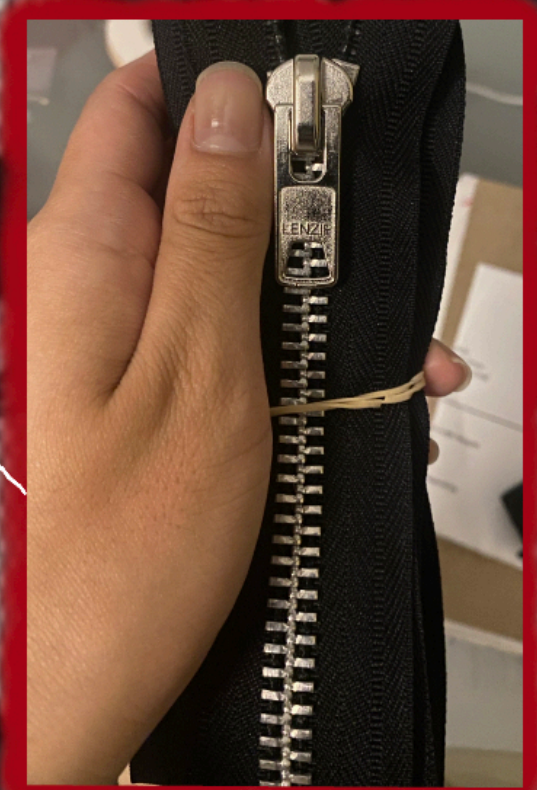
front



back

Acquiring materials

zipper for bodice embellishment



puff sleeve



Pattern Drafting

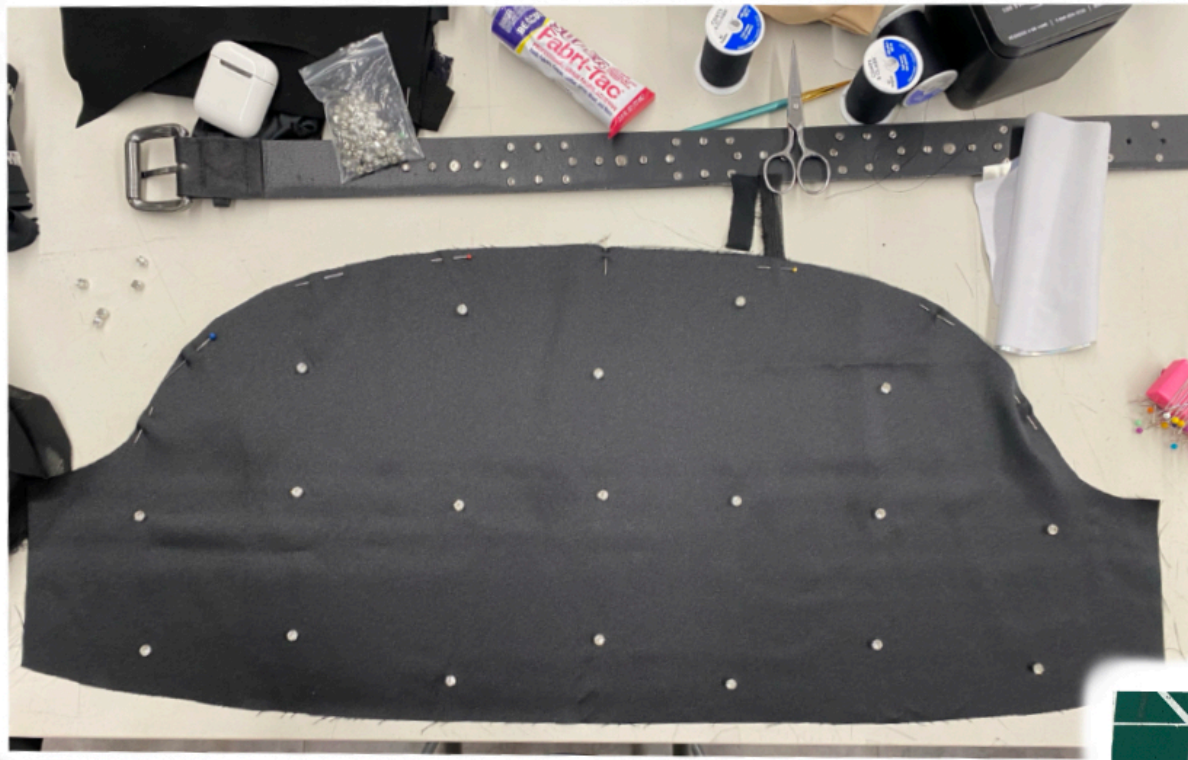


belt for detachable skirt



crystal beads for puff sleeves

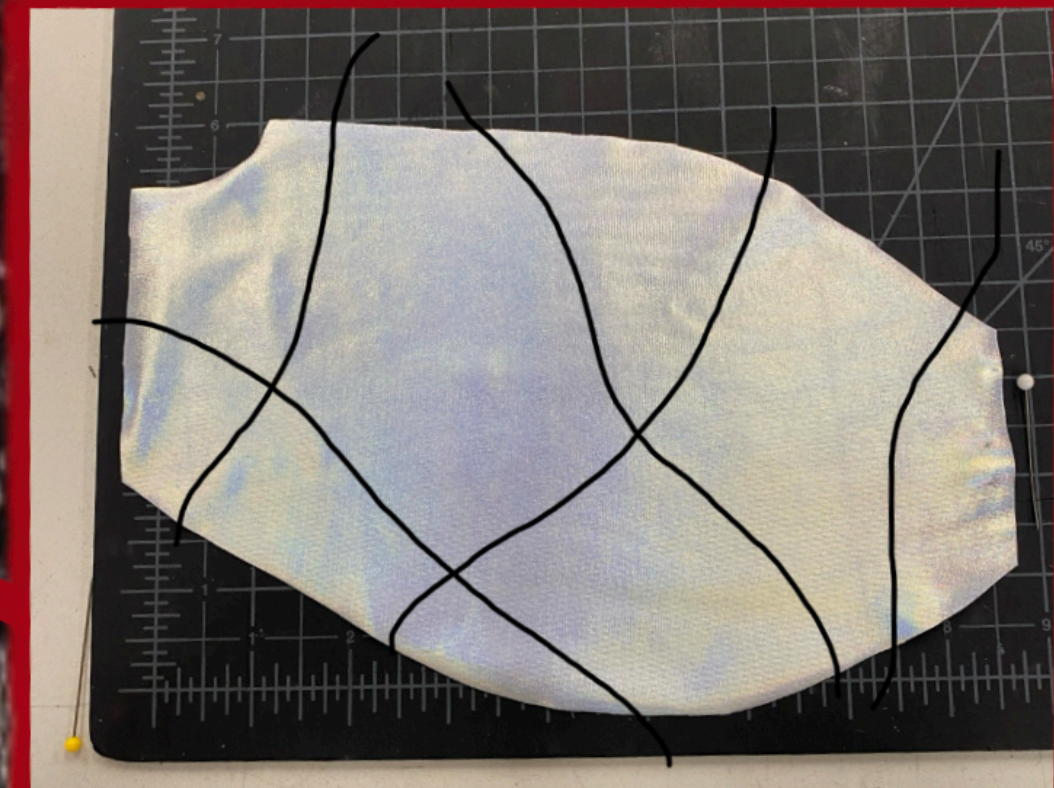
Process Page (Continued)



Beading the sleeve



Constructing the bodysuit



Planning for fabric paint

Final Garment



Costume Budget

SAMPLE COSTUME BUDGET

Production: Mayhem Tour Research: 1 week Sketch:
 Character Name: Lady Gaga Sample Prep: 3 weeks
 Costume Designer: Eleana Garcia Final Costume Due: May 5 2025
 Budget Date: 3/3/2025 Target Budget: \$150

Costume Description: Black and Silver Zipper Bodysuit, Black Knit/Chiffon Skirt

Design Elements	Material	Source link:	Price per Unit	Units Needed	Total	Notes
Piece 1- Bodysuit	Luminous Liquid Vinyl Coated Spandex	https://stretchhouse.com/product/luminous-liquid-vinyl-coated-spandex-fabric-	\$18.00	1	\$18.00	
	Black Stretch Lace	Gaffney's	\$4.99	1	\$4.99	
	Black Stretch Mesh	Gaffney's	\$4.99	1	\$4.99	
	Casa Stretch Satin Black	Joann's	\$11.24	1	\$11.24	
	#10 Aluminum Heavy Duty Separators	https://zipperhipper.com/collections/black-zippers/products/10-aluminum-heavy-duty-separators	\$6.55	2	\$13.10	
	#10 Aluminum Heavy Duty Separators	https://zipperhipper.com/collections/black-zippers/products/10-aluminum-heavy-duty-separators	\$14.85	1	\$14.85	
	#2 Mesh / Sheer Tape (Ultra Light Vinyl)	https://zipperhipper.com/collections/invisible-zippers/products/2-mesh-sheer-tape	\$1.89	1	\$1.89	
	LolliBeads (TM) 50 Pcs Crystal Ringed Rhinestone	https://www.amazon.com/LolliBeads-Crystal-Ringed-Rhinestone-Silver/dp/B00A	\$6.99	1	\$6.99	
					\$0.00	
	Lining Spandex Fabric Nude #4	https://stretchhouse.com/product/lining-spandex-fabric-nude-4/	\$6.00	2	\$12.00	
Piece 2- Skirt	Polyester Chiffon	Joann's	\$9.74	2	\$19.48	
	Crepe Knit	Pre-owned		1.5	\$0.00	
	blu&ben Studded Belt (24"-28")	https://www.amazon.com/blu-ben-Studded-Women-Gothic/dp/B0DG8XNGPV/re	\$17.99	1	\$17.99	
					\$0.00	
					\$0.00	
					\$0.00	
					\$0.00	
					\$0.00	
Piece 3- Sunglasses	Black Melted Frame Sunglasses	Buffalo Exchange	\$12.50	1	\$12.50	
					\$0.00	
					\$0.00	
					\$0.00	
					\$0.00	
					\$0.00	
					\$0.00	
					\$0.00	
					\$0.00	
					\$0.00	
Total:					138.02	