

HALL of FAME



**Catherine "Cathy"
Roehl Peterson**

Class of 1965

Badminton, Tennis,
Basketball, Softball

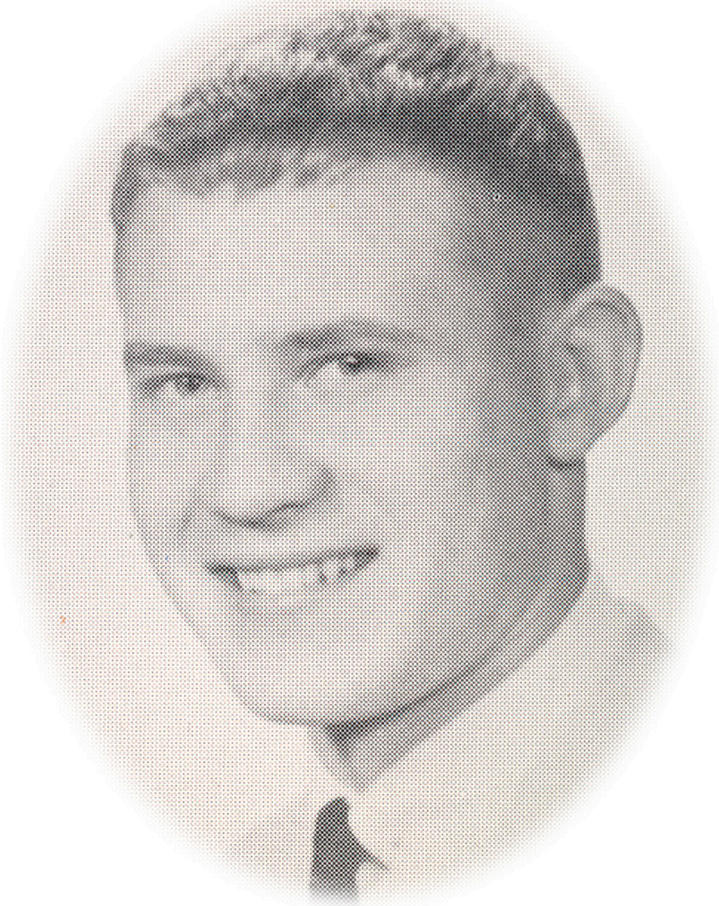
Community Contributor

Awarded for
Outstanding Contribution to

Patrick Henry High School

Inducted June 7, 2002

HALL of FAME



Don Laine
Class of 1960

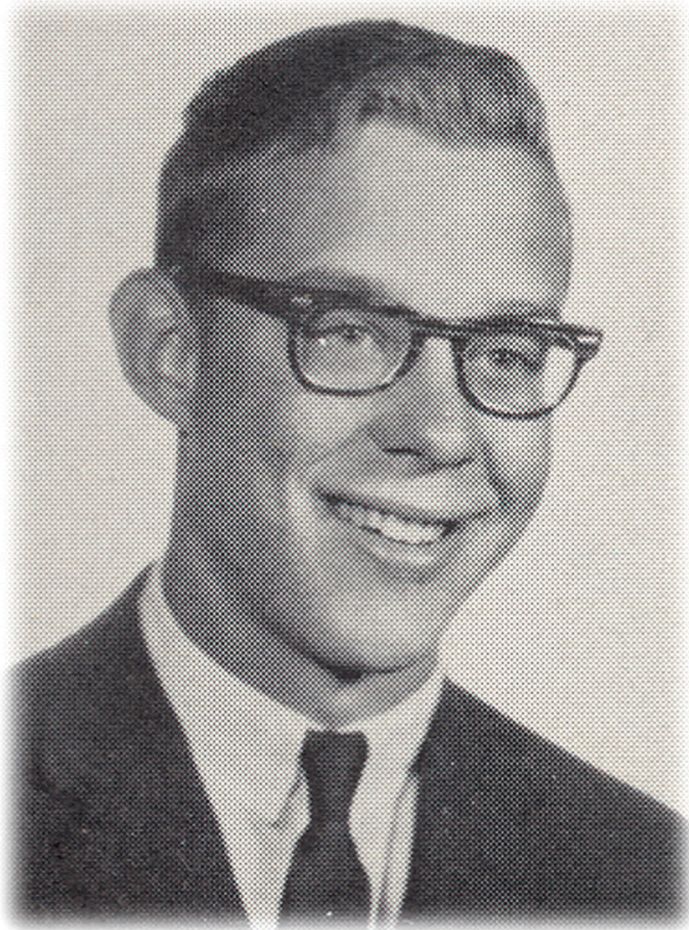
Hockey, Football, Baseball

Awarded for
Outstanding Contribution to

Patrick Henry High School

Inducted June 7, 2002

HALL of FAME



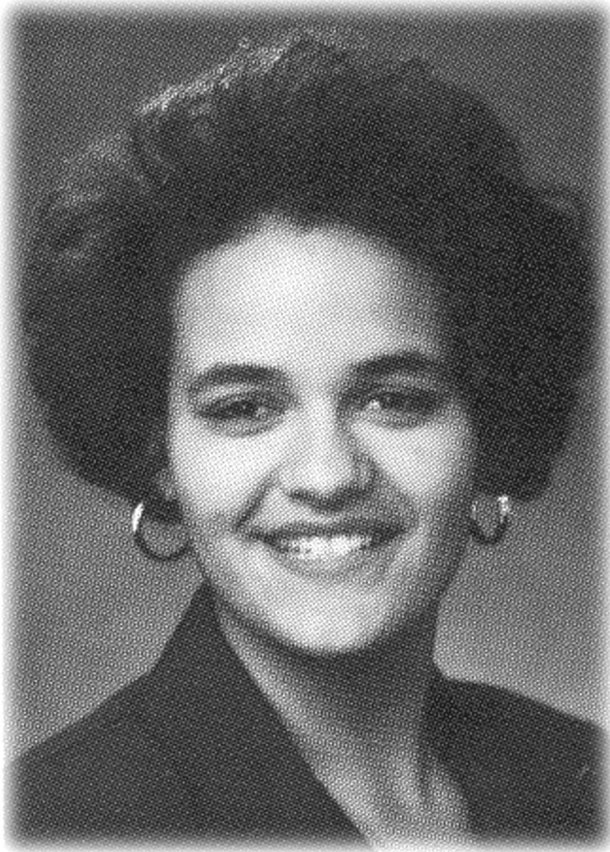
Jerry Gruidl
Class of 1961

Golf, Basketball

Awarded for
Outstanding Contribution to
Patrick Henry High School

Inducted June 7, 2002

HALL of FAME



Nicole M. Harris
Class of 1994

Softball, Basketball,
Swimming, Speech

Awarded for
Outstanding Contribution to
Patrick Henry High School

Inducted June 7, 2002

HALL of FAME

Robert E. Robinson
Class of 1978



Speech
Community Contributor

Awarded for
Outstanding Contribution to
Patrick Henry High School

Inducted June 7, 2002

HALL of FAME



Tracy Henderson

Class of 1993

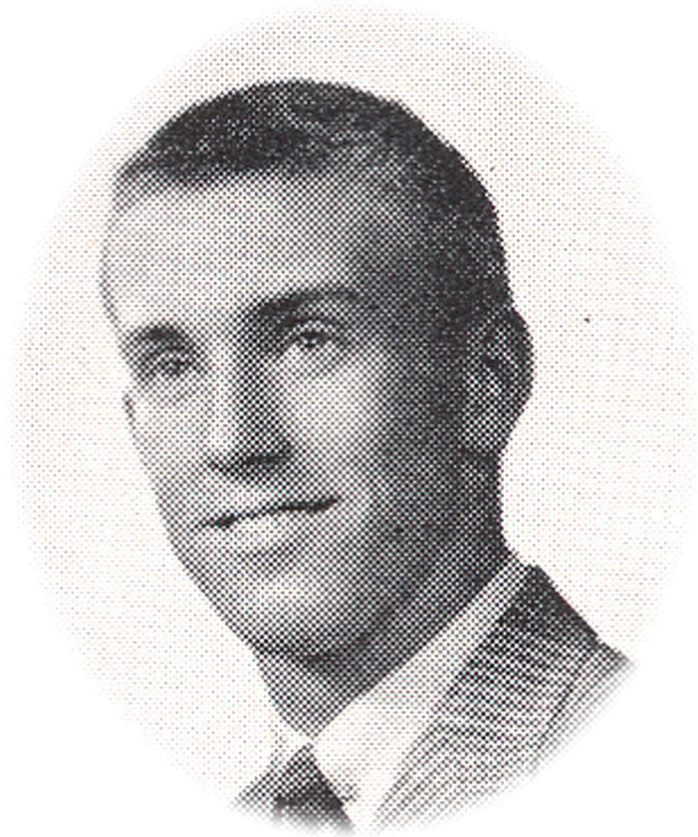
Basketball, Volleyball

Awarded for
Outstanding Contribution to

Patrick Henry High School

Inducted June 7, 2002

HALL of FAME



Warren J. Rolek
Class of 1957

Gymnastics, Baseball, Football

Awarded for
Outstanding Contribution to
Patrick Henry High School

Inducted June 7, 2002