

Installation Instructions for Jentech Pickleball Courts

Included in your Jentech Pickleball Court Package:

1. (2) rolls of Jentech Court for the Kitchen.
2. (2) rolls of Jentech Court for the service area left hand striping.
3. (2) rolls of Jentech Court for the service area right hand striping.

Included in your Jentech Pickleball Court but, in a different package:

4. Touch Up Service Area Paint.
5. Touch Up Kitchen Area Paint.
6. Touch up Line Paint.

Jentech Pickleball Court Glue:

*Ordered Separately.

1. 3 Kits of Jentech Pickleball Court Glue.

Applicators Kit:

*Ordered Separately.

1 Gallon Mixing Bucket

Powder Scoop

Squeegee

3" Chip Brushes (4) Brushes

Masking Tape (2) Rolls

Gorilla Tape

Mechanics Gloves (10) Pairs

Contractors Pencil

18" Roller Frame

18" Roller Cover

36" Bungee Cords (4)

Clamps (6)

Chalk Line (1)

Chalk (1) Box

Supplies you will have to supply:

1. (6) 5 gallon buckets
2. Enough gravel or dirt to fill the buckets 2/3 of the way up. Do not use water!
3. (2) 8' wood 2x4s
4. (2) 8' wood 1x2s
5. (2) Threaded Broom Handle
6. (3) People
7. Sika Ready-Mix Concrete Patch from Home Depot if desired.
8. Quikrete Vinyl Concrete Patch Repair from Home Depot if desired.

Installation Instructions:

Prep:

1. On Concrete or Asphalt.
2. Pressure wash the area where the court is to be laid down.
3. Make sure the area where the court is to be laid down is dry.
4. Make sure the area where the court is to be laid down is clean of any dirt, debris, mud, algae or any other contaminants.
5. Make sure the area where the court is to be laid down is warmer than 40 degrees Fahrenheit and less than 90 degrees Fahrenheit.

Crack Repair:

Repair all cracks if desired. Use Sika Ready-Mix Concrete Patch from Home Depot.

Bird Baths:

Repair all bird baths if so desired. Use Quikrete Vinyl Concrete Patch Repair from Home Depot.

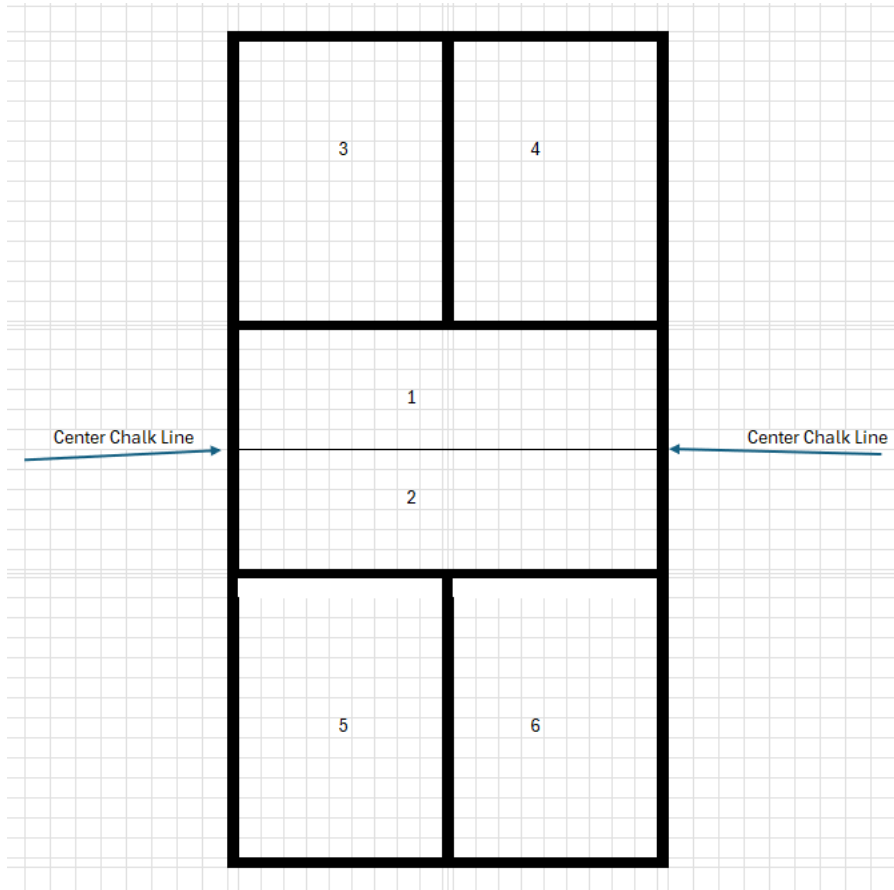
Court Pieces:

The court pieces will be in a box rolled up so that the first piece to be unrolled will be the first to be installed. It is number 1. The pieces are all numbered in order. So, unroll the first court piece (number 1), install it and then unroll and install the next piece (number 2). Keep going with this process until all 6 pieces are installed.

The courts are rolled so that when you unroll them the court piece will be upside down. When you unroll it, you will have to flip it over. Use at least 2 people for this process and **BE CAREFULL NOT TO WRINKLE THE COURT.**

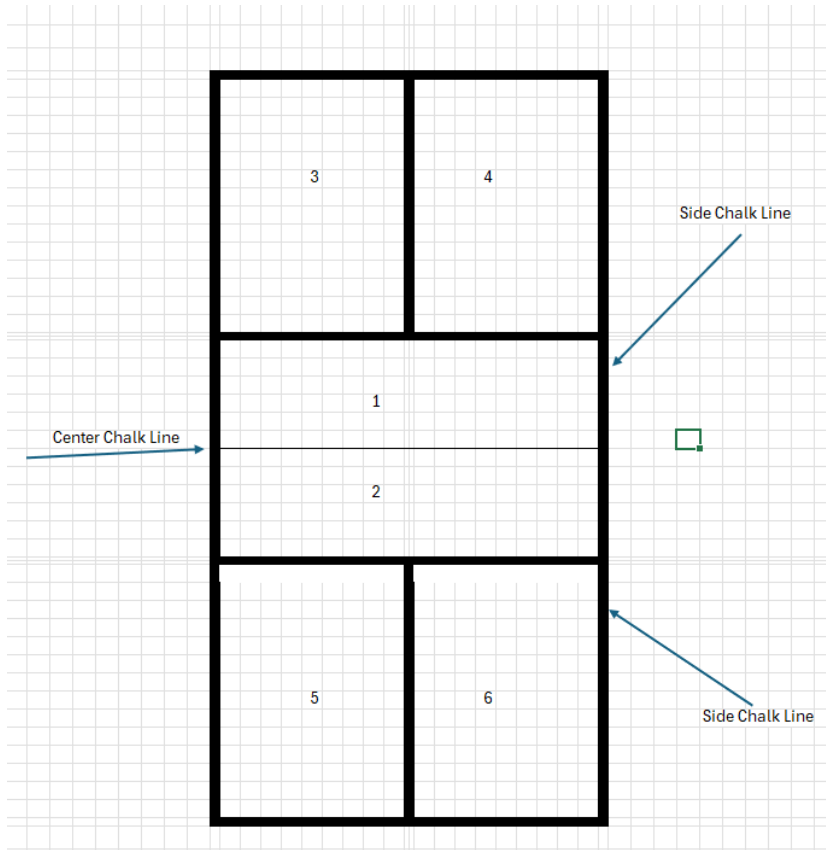
Center Chalk Line:

Snap a chalk line down the center of the court where the net will be located. **It is very important to get this in the right place!**

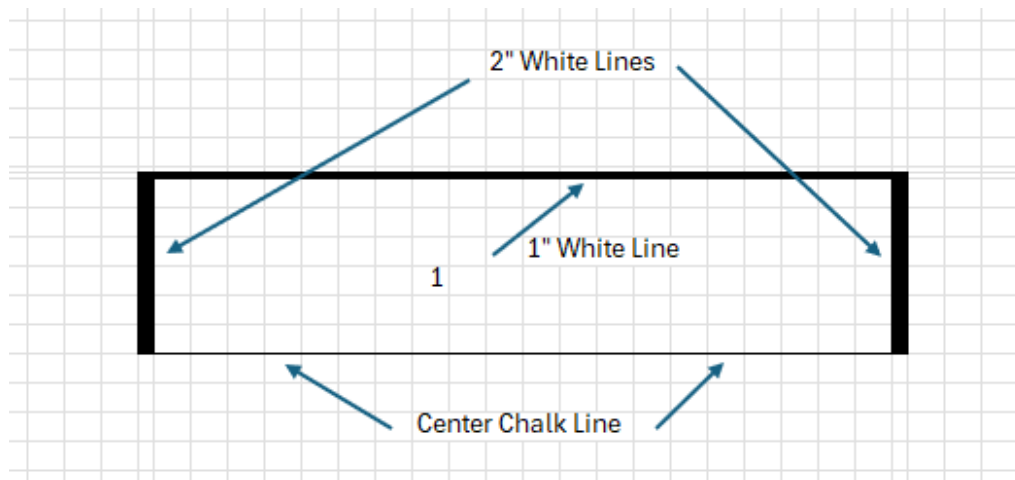


Side Chalk Line:

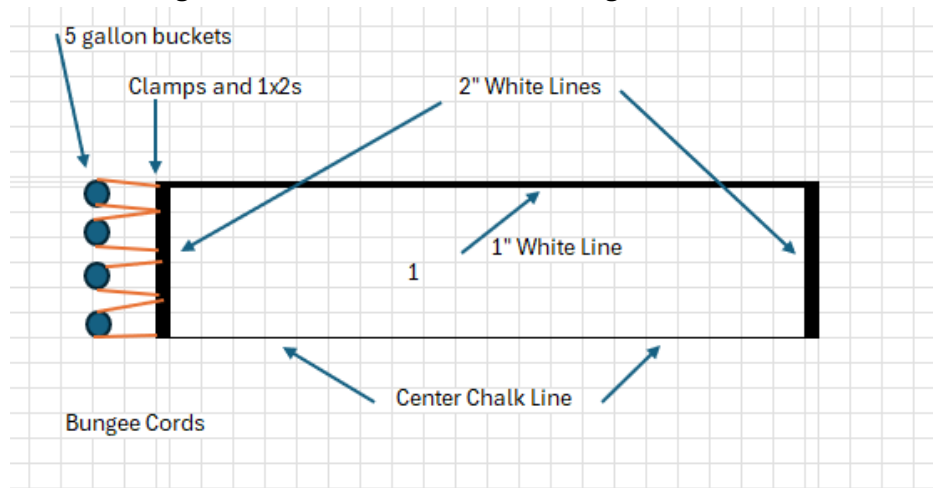
Snap a chalk line down the side of the court along court numbers 1, 2, 4, 6. It is important to make sure the Side chalk line is perpendicular to the Center Chalk Line.

**Court Area 1:**

6. Along the Center Chalk Line and the Right Chalk Line lay court piece number 1 as shown in the diagram below. Make sure the edge without a white line is along the Center Chalk Line.

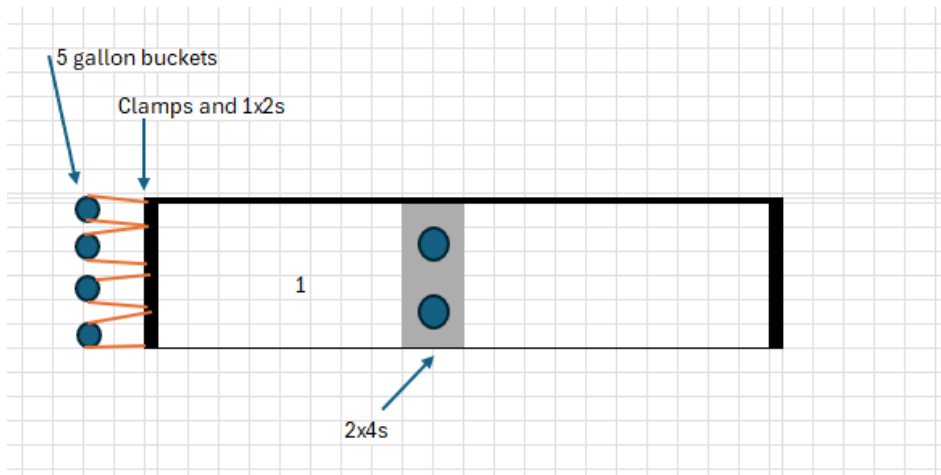


7. On the Right Hand Side of the court lay a line of Masking Tape so that it is half on the court and half off. Then lay a line of Gorilla Tape half on the Masking Tape and half on the concrete. Make sure the right hand side of the court is exactly on the Right Hand Chalk Line and side of court number one that does not have a white line is on the Center Chalk Line.
8. On the left hand side of piece number one clamp the (2) 1"x2" so the court is sandwiched between the 1x2s. Hook the bungee cords up to the clamps. Then put the bungee cords around the 5 gallon buckets as shown in the diagram below.



Slowly move the buckets back until the court is stretched tight and there are not wrinkles in the court. Make sure the edge of the court is exactly on the Center Chalk Line.

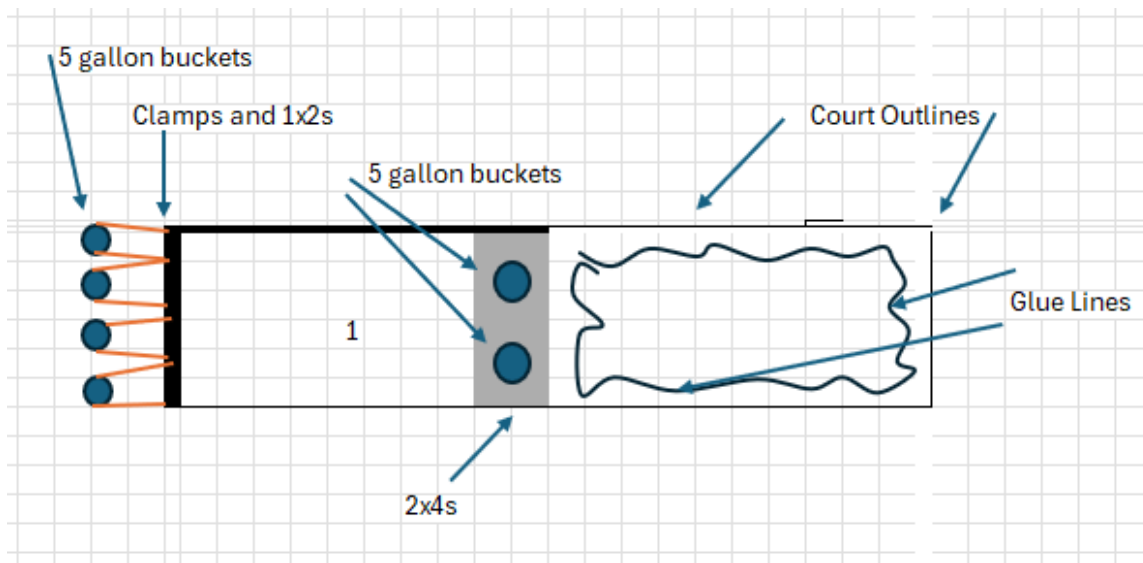
9. Using a chalk stick trace the outside of court number 1 along the 1" line and the left hand side.
10. In the center of court piece number 1 place the (2) 2x4s with (2) 5 gallon buckets filled with gravel on top of them as shown in the diagram below.



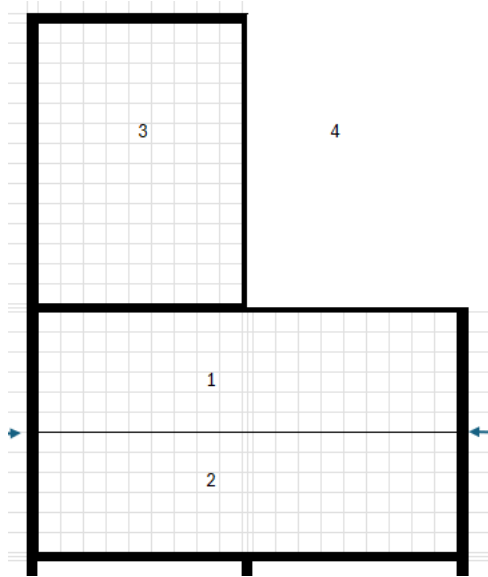
11. Peel back the right side of the court and lay it over the buckets. Be careful not to fold the court.
12. Pour 32 Ounces of **A** side Jentech Court Bonding Glue into the mixing bucket. Just fill it to the bottom mark. Now pour 32 Ounces of **B** side Jentech Court Bonding Glue into the bucket. Just fill it to the top Mark. Add one level scoop of Jentech Court Bonding Glue Powder to the bucket and mix thoroughly. **BE VERY CAREFUL! MAKE SURE YOU MIX A SIDE AND B SIDE.**

MIXING MISTAKES ARE VERY DIFFICULT TO FIX!!!!!!!

13. **Immediately** after mixing pour the mixed glue out of the bucket just inside of the court outlines. Try to cover the entire court outlines with the bucket of mixed glue so that it appears as in the diagram below. Using a chip brush spread the glue up to the court outlines. Make it thin and try not to go outside of the lines.



14. Use the squeegee. Start at the court outline and push the glue inwards towards the center of the court. Try to cover this area with glue as evenly as possible.
15. (2) people will now each take one corner of the right-hand side of the court that is laid over the left-hand side and pull it over the glued area. Keeping the right-hand side suspended over the glued area. Pull it tight towards the corners. The third person will now take the 18" roller frame and cover and work from the 2x4s to outer edges pushing the court down as you move along. It is very important to keep any bubbles out of the court at this time. Be careful not to wrinkle the court during this process.
16. Tape all 3 of the edges of the glued area down to hold them in place while curing. Use masking tape first and then Gorilla tape over the top of the masking tape.
17. Remove the buckets and 2x4s from the left-hand side of the court. Peel the left-hand side of the court over the right-hand glued down area. Be careful not to fold the court. Repeat the same glueing process on the left-hand side of the court as you did on the right-hand side.
18. If there are still there are bubbles on the left hand side reapply the 1x2s and clamps and re-stretch the court surface.
19. Lay court area number 2 down next to court area 1. **It is important to make sure the Lines are on the outside. There should not be a white line between court areas 1 and 2. This is important.**
20. Court Area number 2 will now be glued down in the same manner as court area number 1. **It is important to make sure the 1" Wide Lines are on the outside. There should not be a white line between court areas 1 and 2. This is important.**
21. Once area 2 is complete lay down area number 3 as shown in the diagram below. It is important to have the 2" wide lines on the outside and the 1" wide lines on the inside.



22. Repeat this process until the court is finished.
23. Tape all edges down using masking tape on the court and gorilla tape over the masking tape on the concrete.
24. Be very careful not to get any glue on the top side of the court areas. It will not come off. Use the supplied touch up paint to cover any glue that gets on the topside of the court.
25. Leave the masking tape on all edges of the court areas overnight. When peeling the tape off do not lift it straight up. Peel it towards the center of the court. This is important.
26. The glue will be about 90% cured overnight and you may play on it after 24 hours. Full cure of the glue will not finish until at least 7 days depending upon the temperatures.

27. After 24 hours drill a $\frac{1}{8}$ th inch hole in the court $\frac{1}{4}$ th inch deep on a grid every 2 feet. These holes are to release the hydrostatic pressure from beneath the concrete or asphalt. Use a string line that has been marked every 2'. Stretch the string line tight and then drill along the marks. This is not an arduous process, but it is necessary.

