



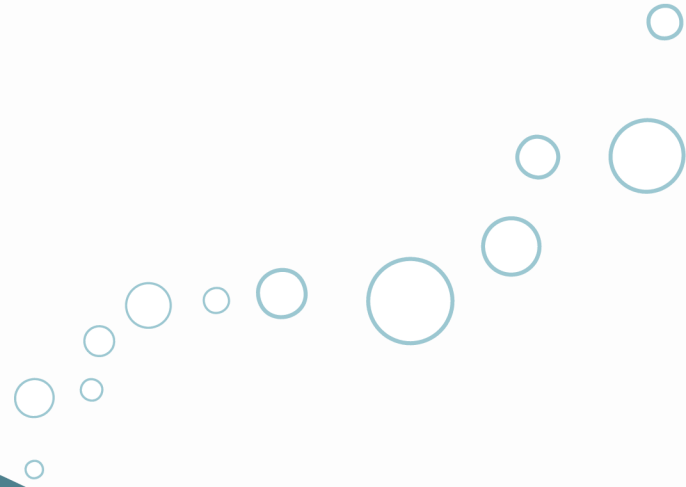
KIMBALL CAMP

OUTDOOR CENTER

SUMMER 2025

DAY CAMP HANDBOOK

KIMBALL CAMP
OUTDOOR CENTER
4502 Berlin Dr.
Reading, MI 49274



(517) 283-2168

office@kimballcamp.com

www.kimballcamp.com

DIVE IN

Get ready to “Go Against the Flow!” With 10 thrilling themes, this summer is sure to make a splash. Inside you’ll find everything you need to plan and prepare for fun in the sun (or rain).

“Go Against the Flow” means standing firm in our faith and friendships when faced with difficult decisions. Whether it’s speaking up for what you know is right, or challenging yourself to face fears, sometimes you have to swim against the current.

WHAT’S INSIDE



WHO WE ARE	3
WHAT WE DO	4
WHERE WE ARE	5
CAMP THEMES	6
REGISTRATION & PAYMENT	7
DAILY SCHEDULE	8
PACKING & PREPARING	9
HEALTH & WELLNESS	10
EXPECTATIONS & DISCIPLINE	11
ABUSE PREVENTION	12
REACH OUT	13



SINCE 1938...

Kimball Camp has joyfully served the local community and beyond through a diverse range of programs designed to create lasting memories and build strong connections. From educational programs for schools and fun-filled day groups to intimate gatherings of family and friends, Kimball Camp provides an ideal setting for making cherished memories. With a variety of summer camp options for all ages, we cater to everyone's needs, offering both adventure and personal growth.

Our highly qualified and dedicated staff are the heart of Kimball Camp. They bring passion, energy, and expertise to everything they do, ensuring that each participant enjoys an exceptional and meaningful experience. Whether it's helping children develop new skills, encouraging teamwork, or guiding individuals on their own personal journey, our staff members go above and beyond to make every moment count.

Looking ahead to summer, we're excited to introduce our talented team of summer staff. Stay tuned to our website and social media for upcoming introductions and get to know the passionate individuals who make Kimball Camp an unforgettable place for all.

To learn more about our staff, visit: www.kimballcamp.com/our-staff

WHO WE ARE

PROGRAM STAFF



Madelynn Whited
Executive Director



Darrell Bryant
Program Director



Amelia Oliver-Jackson
Administrative Director



Alexandra Gamicchia
Assistant Program Director



Shari Presnell
Executive Chef &
Accountant



VISION

To inspire personal growth, connection, and change.

MISSION

Kimball Camp provides a safe and enriching environment for all ages by fostering a connection with faith, community, self and nature.

VALUES

FAITH: Encourage character development through a Christian perspective while respecting people of all faiths.

SAFETY: Ensure ethical conduct and operational integrity through informed and transparent policy and procedures.

OUTDOORS: Embrace nature's classroom for life changing experiences, where the wilderness becomes a canvas for personal growth and connection.

RECREATION: Rediscover the joy of play and shared experiences, fostering vitality, camaraderie, and well-being through diverse recreational opportunities.

ADVENTURE: Answer the call to explore the unknown, challenge limits, and embrace the transformative power of every journey, big or small.

WHAT WE DO

SUMMER 2025 KEY VERSES

1 John 2:16 "For everything in the world - the lust of the flesh, the lust of the eyes, and the pride of life - comes not from the Father but from the world. The world and its desires pass away, but whoever does the Will of God lives forever."

Romans 12:2 "Do not conform to the pattern of this world, but be transformed by the renewing of your mind. Then you will be able to test and approve what God's will is—his good, pleasing and perfect will."

Jeremiah 29:11 "For I know the plans I have for you," declares the Lord, "plans to prosper you and not to harm you, plans to give you hope and a future."

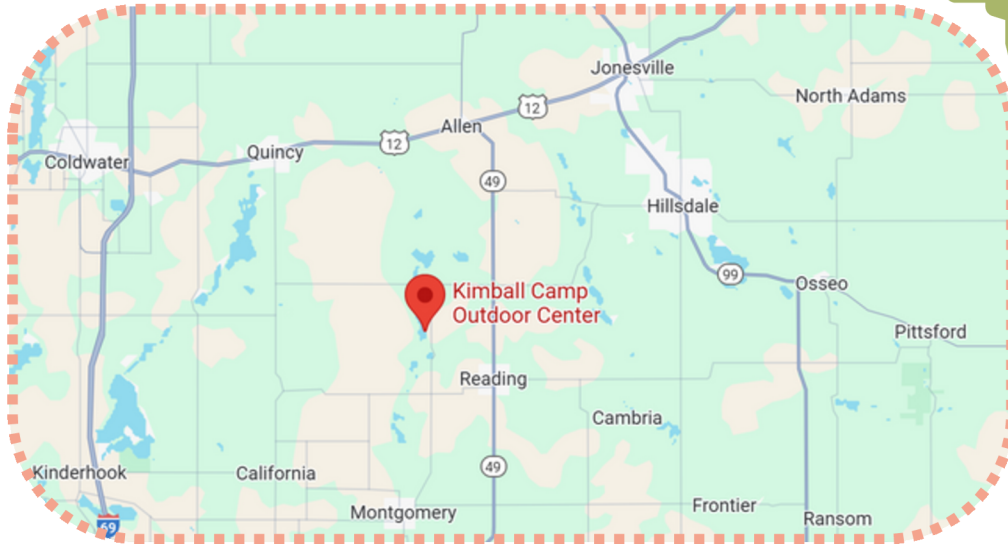


“YOUR FEET MAY LEAVE, BUT YOUR HEART NEVER WILL”

Kimball Camp Outdoor Center manages 101 acres of land that are prime for exploration and discovery! Our campus consists of conifer and hardwood forests, freshwater lake and stream, lawn, and old field ecosystems. We are also stewards of Kimball Pointe, a nearby nature preserve consisting of freshwater lake, hardwood forest, and wetland ecosystems.

WHERE WE ARE

4502 Berlin Drive Reading, MI 49274



THE LODGE

The camp office is located inside Herrick Lodge. Day Camp drop-off and pick-up will take place at the playground next to the Lodge, weather permitting. All visitors, including early pick-up or late-drop offs, must check in at the office.



KATIMAVIC

Located across from the Lodge and playground, our Katimavic classroom is Day Camp's home base and drop-off/pick-up point during inclement weather. Please have your ID ready at pick-up.



CAMP FRIENDSHIP **WEEK 1: JUNE 9-13**

Camp Friends are the best friends! Get to know your fellow campers and our summer staff through songs, skits, games and more.

SHOW SOME SPIRIT **WEEK 2: JUNE 16-20**

Show your summer spirit each day!

Monday: PJ/Cozy clothes

Tuesday: School/Team

Wednesday: Backwards

Thursday: Holidays

Friday : Rainbow/Tie-Dye

HEROES & VILLAINS **WEEK 3: JUNE 23-27**

Join the battle of "good" vs "evil!" Dress as your favorite heroes and villains to see who will rule the camp. Please no toy/prop weapons.

STARS, STRIPES & CELEBRATION **WEEK 4: JUNE 30-JULY 2**

Get festive for the Fourth! Our mini-camp is jam-packed with classic camp activities and special celebrations.

GAME ON **WEEK 5: JULY 7-11**

Whether it's field games or board games, challenge yourself through competitive play! Race to the top of Goliath, battle in the Gaga Ball pit, or become the card game champion.

WONDERS OF THE WILD **WEEK 6: JULY 14-18**

Flora, fauna, and fossils - oh, my! Dig into our natural world through forest study, rockhounding and animal tracking.

MOVE TO THE MUSIC **WEEK 7: JULY 21-25**

March to the beat of your own drum! Dance, craft, play and sing your way around camp.

ADVENTURE AROUND THE WORLD **WEEK 8: JULY 28-AUGUST 1**

From the shores of Long Lake, to the peak of the Giant Swing, venture around camp while getting a taste of global cultures!

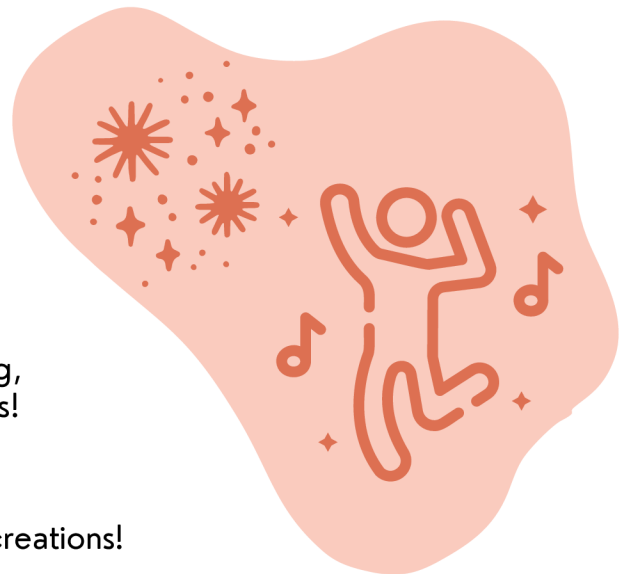
TRAVEL THROUGH TIME **WEEK 9: AUGUST 4-8**

Discover decades past through games, crafts and culinary creations!

CAMP MAGIC **WEEK 10: AUGUST 11-15**

Summer may end but the magic lives on! Experience the best of camp with magical surprises.

CAMP THEMES



HOW TO REGISTER

Sign up for camp by visiting our website:
<https://kimballcamp.com/summer-camps>

Please confirm all your information and camp selection are correct. If you need to make a change or cancellation, contact our office. Spaces are not reserved until a \$50 non-refundable deposit is made for each week of camp.

HOW TO PAY

Payments can be made online at:
<https://kimballcamp.com/day-camps-1>

Full payment is due by June 1st, 2025.

If you register after June 1st, please pay in full to reserve your child's space. Cash or check payments may be delivered to the camp office.

Week Rates:

Full-day camp (grades K-8): \$130

Half-day camp (pre-K): \$80

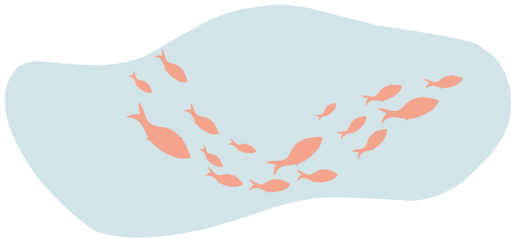
Mini camp: \$80 full day, \$50 half-day

FUNDRAISING

Register online:
<https://form.jotform.com/242835156996976>

Raising money for camp is easy with our fundraising options!

Many campers fully-fund their own camp experience through our World's Finest Chocolate and Country Meat Snack sales. Generated funds may only be applied to Summer Camp 2025 programs and do not carry over to other programs or years. Unspent funds are non-refundable and will automatically be applied to our general camp scholarship fund.



REGISTRATION & PAYMENT



REFUND POLICY

Payments may be refunded in full if the participant cancels before arriving at camp, minus the \$50 non-refundable deposit.

No full refunds will be provided after a camper arrives at the camp, except under extenuating circumstances as determined by a camp director. No full refunds will be provided if a camper goes home early due to homesickness or behavioral issues. If a camper goes home less than 24 hours after they arrive at camp, a 67% refund may be issued. If a camper goes home more than 24 but less than 48 hours after they arrive at camp, a 50% refund may be issued. If a camper goes home more than 48 hours after they arrive at camp, no refund will be issued.

ADDITIONAL FINANCIAL ASSISTANCE MAY BE AVAILABLE. PLEASE REACH OUT FOR MORE INFORMATION.



OUR DAILY SCHEDULE MAY VARY DUE TO WEATHER OR SPECIAL EVENTS

DAILY SCHEDULE

8:30-9:00am: Check-In & Free Choice Play

9:00am: Morning Activity

10:30am: Chapel

11:30am: Lunch (half-day pick-up)

12:00pm: Swim & Sand or Creek Exploration

1:30pm: Afternoon Activity

3:00pm: M-R: Camp Store & Snack

Friday: Closing Chapel & Campfire*

4:00-4:30pm: Pick-Up & Free Choice Play



DROP-OFF & PICK-UP WILL TAKE PLACE AT THE PLAYGROUND. IN INCLEMENT WEATHER, DROP-OFF & PICK-UP WILL TAKE PLACE IN THE KATIMAVIC CLASSROOM. ALL EARLY DEPARTURES OR LATE ARRIVALS MUST CHECK-IN/OUT AT THE OFFICE IN THE LODGE. PLEASE HAVE YOUR ID READY AT PICK-UP.

ACTIVITIES MAY INCLUDE:

- **ROCK CLIMBING**
- **ARTS & CRAFTS**
- **WAGON RIDES**
- **NATURE HIKES**
- **STEM CHALLENGES**
- **TEAM BUILDING**
- **ROCK HOUNDING**
- **ANIMAL TRACKING**
- **FORT BUILDING**
- **FIELD GAMES**
- **GIANT SWING**
- **CAMPFIRE SONGS**

*Camp Store will immediately follow lunch on Friday so our Day Campers can join our Resident Campers for closing chapel & campfire.



A GREAT WEEK AT CAMP BEGINS AT HOME

Set your camper up for success by bringing what they'll need and leaving behind what they won't. Since most of our day will be spent outdoors, unless there is severe weather, appropriate clothing is required. Bug repellent and sunscreen should be applied in the morning; staff will remind and provide opportunities for reapplication, but are not permitted to physically help reapply. Closed-toed athletic shoes are preferred in all areas of camp aside from the Waterfront and are **required** for some activities. Day Campers have the opportunity to swim each day (weather permitting) and must be able to independently change into and out of swimwear.

PACKING & PREPARING



BRING

- Bible
- Backpack
- Reusable Water Bottle
- Bugspray
- Spray Sunscreen
- Sunglasses and/or hat
- Closed-Toed Shoes & Socks
- Swim Gear, Cover-Up & Towel
- Change of Clothes
- Weather Appropriate Clothing
- Raincoat/Poncho
- Medication in Original Container

DO NOT BRING

- ANY Electronic Devices
(disposable cameras are allowed)
- Trading Cards, Toys or Collectables
- Weapons or Flammable Items
- Money* or Valuables

*Camp store money should be deposited at the main office

LOST & FOUND

Please make sure that all of your camper's items are clearly labeled with their first & last name.

If you discover your camper has lost an item, reach out to the main office. We are not responsible for lost, stolen or damaged items. Unclaimed items may be donated after 30 days.



PLEASE CONTACT US IF YOU HAVE ANY CONCERNS REGARDING YOUR CAMPER'S PHYSICAL OR MENTAL HEALTH AT CAMP.

MEDICATION

- **All medications will be checked in with our Health Officer during the drop-off and registration process.**
- Prescription medications must be in the original bottle with the name of the individual and directions for administration.
- Medications will be kept in a locked, secure area unless otherwise specified.
- Medications will be distributed as directed by the Health Officer.
- Campers are not allowed to keep any medication, prescription or over the counter, on their person, except for authorized emergency self-carry medication as prescribed by a physician.

FOOD & DRINK

Campers must consume food and stay hydrated while at camp. Limited alternatives are available at meal times. Please consider providing lunch and snacks for your child if they are a picky eater. Children who refuse to eat or drink will be sent home for their wellbeing.

WE WILL CONTACT YOU IF YOUR CAMPER...

- Refuses to eat or drink
- Has a fever of 100.4 or higher
- Has diarrhea
- Has been vomiting
- Has symptoms of any communicable disease
- Has an oozing wound or sore
- Is unable to actively participate in camp activities due to feeling unwell

CAMPERS MAY RETURN WHEN THEY HAVE BEEN SYMPTOM FREE FOR 24 HOURS, HAVE BEEN ON AN ANTIBIOTIC FOR 24 HOURS, OR HAVE BEEN RELEASED BY A PHYSICIAN.

HEALTH & WELLNESS



ALLERGIES

- **Food allergies must be identified via the camper health form during registration;** our Food Services Director will work with families to ensure safety in the dining hall and, with advanced notice, provide allergy-safe meals.
- Campers requiring an EpiPen for anaphylactic reactions to insect stings, foods, etc. must follow the above instructions.
- Skin sensitivity and environmental allergies must be documented via the health form.

ILLNESS

In the event that your camper becomes ill at camp, we will contact you to pick them up within the hour. If you are unable to arrive within an hour, we ask that you have another emergency contact pick them up. We appreciate your understanding in providing a comfortable place for your child to recover.

EMERGENCIES

In the event of a medical emergency, we will call 911 to have your camper transported to the closest facility for care. Two of our employees will accommodate your camper and we will call you to meet us at the emergency facility.



PROGRESSIVE DISCIPLINE POLICY

Kimball Camp is committed to each camper's success in learning within a caring, responsive, and safe environment that is free of discrimination, violence, and bullying. Our team works to ensure that all campers have the opportunity and support to develop to their fullest potential and gain the skills to create personal and meaningful bonds with people in camp and the community. Intentional, data-driven instruction and approaches are used to create an environment that fosters curiosity and social-emotional wellness. Communicating consistent, clear expectations and using appropriate guidance lays a foundation for campers to build positive life-long relationships, decision making, and resiliency skills. We strive for our program to create caring individuals who are kind to others as well as themselves. Our team ensures safety and empowers our campers to take responsibility in their wellbeing; because of this, we can supply quality opportunities for exploration that strengthen our camper's sense of self and confidence.

CAMPER BEHAVIOR

In order to maintain a safe and welcoming environment, campers are expected to:

- Encourage and uplift fellow campers in all camp activities
- Respect the physical boundaries of other individuals
- Respect camp property by using facilities, spaces and objects appropriately
- Speak to fellow campers and adults with appropriate words and tone
- Only enter and occupy spaces which they are permitted
- Remain in designated, supervised program spaces
- Regulate emotions as developmentally appropriate
- Independently use the restroom and changing facilities
- Communicate needs and concerns to camp staff

CAMPERS WHO EXHIBIT PHYSICAL OR VERBAL AGGRESSION, STEAL OR DESTROY PROPERTY, BULLY, OR CAUSE FREQUENT DISRUPTIONS MAY BE REMOVED FROM THE CAMP PROGRAM PER OUR SUSPENSION & EXPULSION POLICY.

IF YOUR CHILD REQUIRES ADDITIONAL SUPPORT TO MEET THESE EXPECTATIONS, PLEASE CONTACT US.

EXPECTATIONS & DISCIPLINE

**AT KIMBALL CAMP
WE ENCOURAGE,
NOT DISCOURAGE!**

SUSPENSION & EXPULSION POLICY

If the camper and family are unresponsive to implemented supports and interventions, it may become necessary to temporarily (suspend) or indefinitely (expel) remove the camper from the program. At times it may be necessary to suspend a camper from the program for their safety and/or the safety of others. Suspensions will be immediately communicated to the family. After careful consideration by the support team and with administrative approval, the decision to expel will be communicated to the family. **Campers who have been expelled or suspended must be picked up within one hour of family contact.**



CHILD SAFETY AT CAMP

We believe that every child deserves a safe environment to grow, and feel an immense collective responsibility in providing our campers with safe adults at Kimball Camp.

Employment at camp is contingent upon receiving a clear background check and positive reference calls. Every adult staff member is background checked through the Central Registry Clearance (CRC) system. Additionally, all staff, guests and volunteers 18+ must consent to iChat checks through the Michigan State Police.

As mandated reporters, we take child abuse seriously. Our counselors are trained in child abuse recognition and are required to report any incident that may intentionally, recklessly and/or knowingly cause harm to a child. We have a stringent Code of Conduct that all employees are required to abide by. Additionally, we have guidelines for appropriate interactions with, and among, youth in our programs.

APPROPRIATE PHYSICAL INTERACTIONS

- Side hugs
- Shoulder-to-shoulder hugs
- Pats on the shoulder or back
- Handshakes
- High fives
- Pats on the head when culturally appropriate
- Arm around another person's shoulders
- Holding hands (with younger children in escorting situations)

INAPPROPRIATE PHYSICAL INTERACTIONS

- Full-frontal hugs
- Kisses of any kind
- Showing affection in isolated areas
- Lap-sitting
- Wrestling
- Piggy-back rides
- Tickling
- Clinging to an adult's leg/body
- Touching bottom, chest, or genital areas
- ANY form of unwanted affection

ABUSE PREVENTION

**RULE OF THREE:
NO MINOR SHALL
BE ALONE WITH AN ADULT UNDER
ANY CIRCUMSTANCES; ANOTHER
ADULT OR MINOR MUST BE PRESENT**



APPROPRIATE VERBAL INTERACTIONS

- Positive reinforcement:
 - That was a good choice, I'm proud of you!
- Appropriate jokes:
 - How do you know a dad joke is a dad joke?...it will be apparent!
- Encouragement and praise:
 - Great job! Keep it up!

INAPPROPRIATE VERBAL INTERACTIONS

- Name-calling
- Secrets
- Cursing or derogatory remarks
- Off-color or sexual jokes
- Shaming, belittling
- Oversharing personal history
- Compliments relating to physique or body development
- Discussing sexual encounters or in any way involving campers in the personal problems or issues of employees, minor staff, or volunteers



CAMP OFFICE

HOURS: Monday - Friday: 9am-4pm

Executive Director

Madelynn Whited

director@kimballcamp.com

(517) 283-2168 ext. 4

Program Director

Darrell Bryant

program@kimballcamp.com

(517) 283-2168 ext. 2

Administrative Director

Amelia "Mia" Oliver-Jackson

amelia.mia.kimballcamp@gmail.com

(517) 283-2168 ext. 3

Executive Chef & Accountant

Shari Presnell

foodservice.kimballcamp@gmail.com

(517) 283-2168

Assistant Program Director

Alexandra Gamicchia

outreach.kimballcamp@gmail.com

(517) 283-2168

CONNECT WITH US ON SOCIAL MEDIA

 [FACEBOOK.COM/KIMBALLCAMP](https://www.facebook.com/kimballcamp)

 [@KIMBALLCAMP](https://www.instagram.com/kimballcamp)

REACH OUT



CONTACTING YOUR CAMPER

You can contact your camper throughout the week via email, mail or packages. Phone calls are discouraged.

Camper Email:

office@kimballcamp.com

Our office manager checks email every morning and delivers messages during lunch.

Camper Mail:

[Camper's Name]
Kimball Camp Outdoor Center
4502 Berlin Dr.
Reading, MI
49274

Mail arrives mid-morning and will be delivered during lunch. Packages vary on arrival time. We recommend sending mail ahead of your camper's arrival at camp to ensure they receive it.

