



CONNECT GROUP

VISION CASTING

The SECRET to being an effective Christian!



Dream

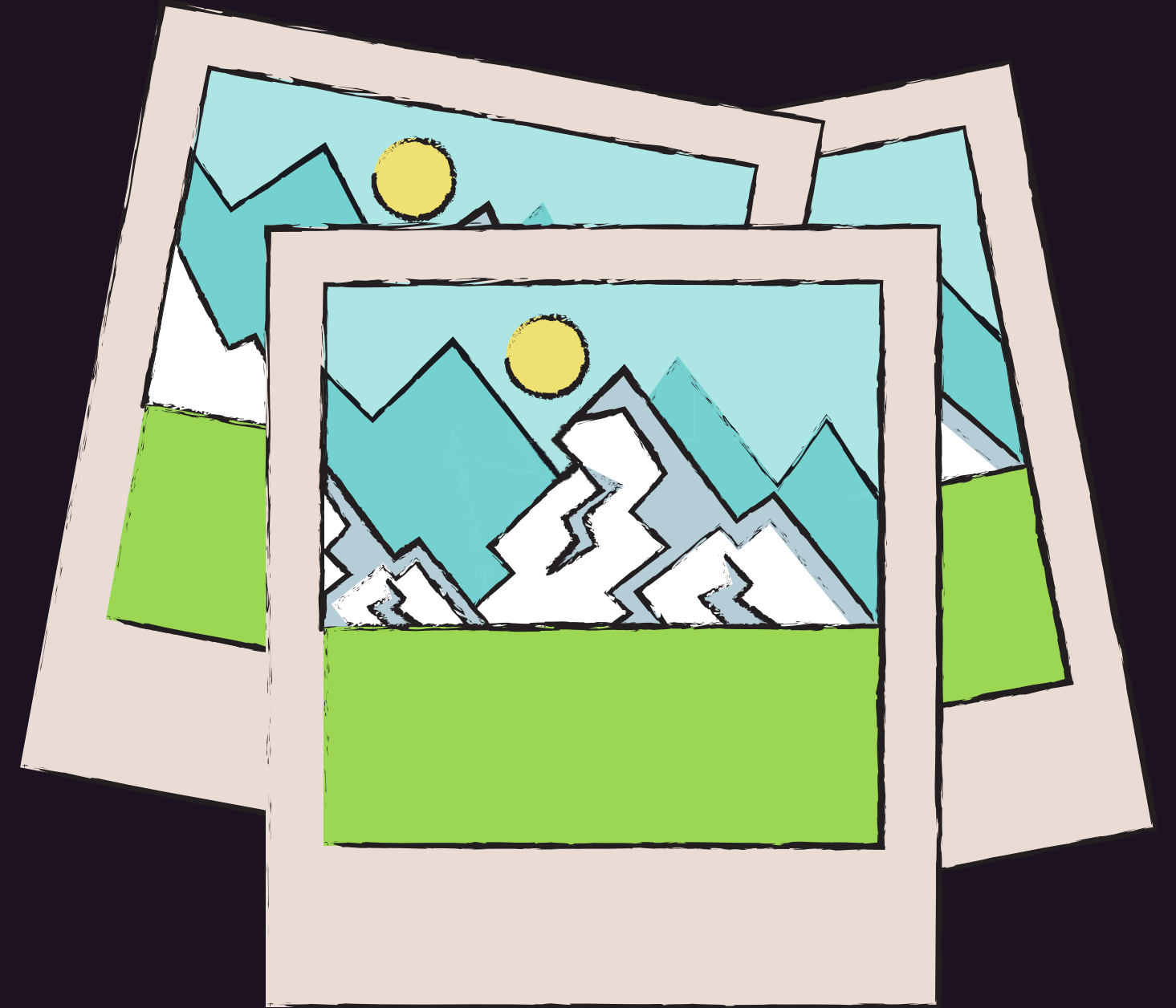
vs.

Vision

Dream *Vision*

desired future state

A **personal vision** is a mental picture of the kind of person you want to become and the future you hope to achieve.



VISION CASTING



VISION CASTING

Vision casting means helping people see where you are going and why it matters.

MATTHEW 28:18-20

Our Vision

Have thousands of dedicated Connect Group leaders of the Lord Jesus Christ transforming lives for the glory of God!

SUCCESSFUL

**SOME MARKS OF A
SUCCESSFUL CHRISTIAN**

SOME MARKS OF A SUCCESSFUL CHRISTIAN

- 1. EMBRACES** THE CLEAR VISION
- 2. PLUG IN** TO THE VISION STRATEGY
- 3. CARES** FOR THE LOST SOULS

**ONE MARK OF A
SUCCESSFUL CHRISTIAN IS**

**1. EMBRACING
THE CLEAR
VISION.**

18 Jesus came and told his disciples, “I have been given all authority in heaven and on earth. **19** Therefore, **go** and **make disciples** of all the nations, **baptizing** them in the name of the Father and the Son and the Holy Spirit. **20 Teach** these new disciples to obey all the commands I have given you. And be sure of this: I am with you always, even to the end of the age.”

MATTHEW 28:18-20

Our Vision

Have thousands of dedicated Connect Group leaders of the Lord Jesus Christ transforming lives for the glory of God!

VISION STRATEGY:



SHARE



LEARN



LEAD

VISION STRATEGY:



SHARE



- One Verse
- Follow-through
- Message connect



LEARN



- Learn to present One Verse
- Enrolled in the DJK Connect Group
- Connect Group Retreat Graduate



LEAD

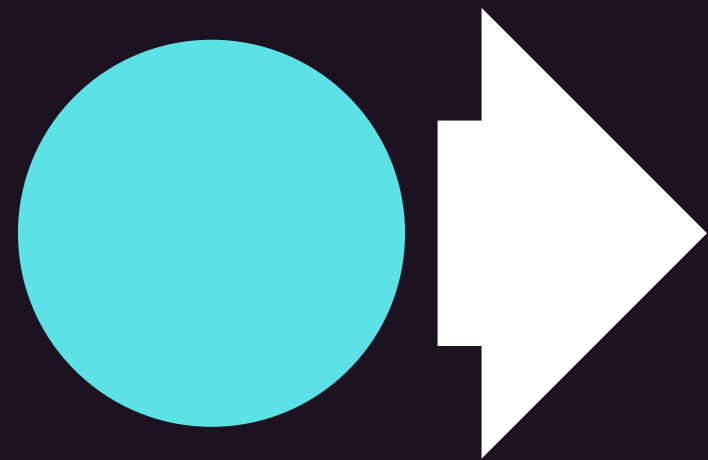
- Connect Group leader
- Book 1
- Book 2
- Book 3

DEFINITION OF TERMS FOR VISION STRATEGY

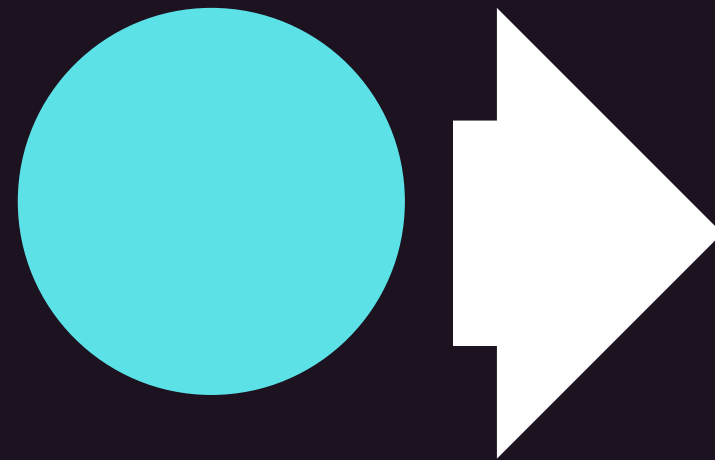
Share is a stage in the vision strategy where individuals engage in 'One Verse,' 'Follow-through,' and 'Message Connect.'

PHASES OF THE SPIRITUAL JOURNEY FOR NEW BELIEVERS

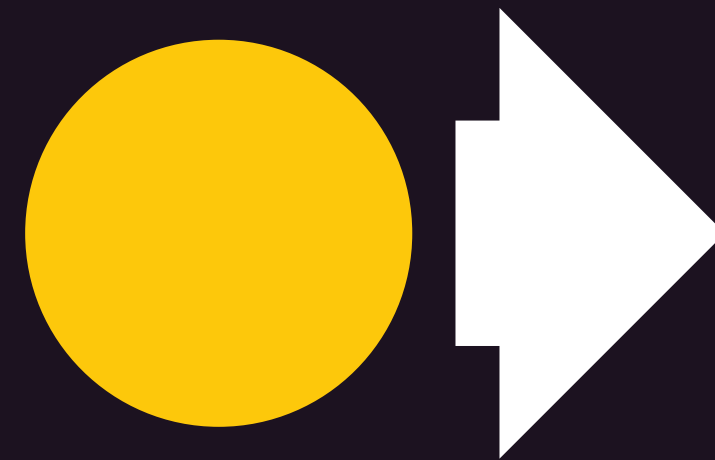
Phase One | Sharer



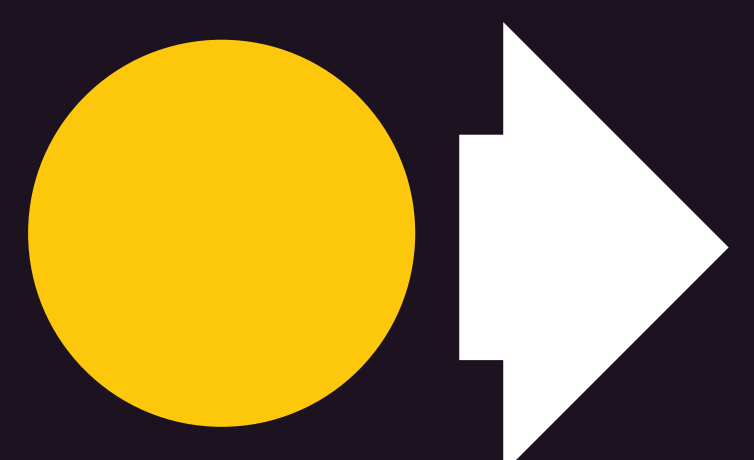
One Verse



**Follow-through
One Verse**



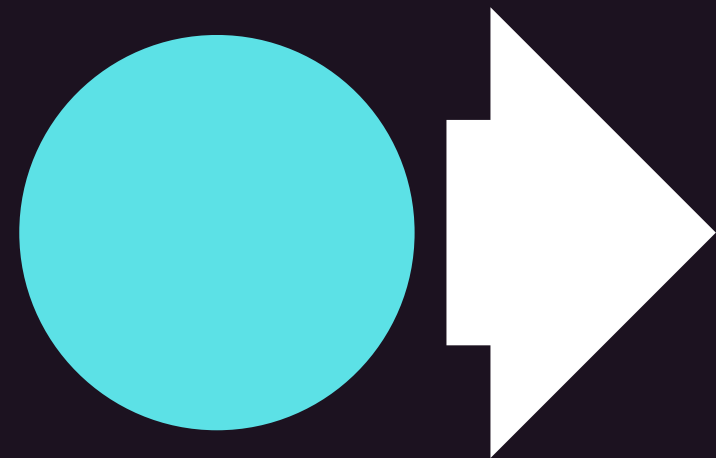
**Message
Connect**



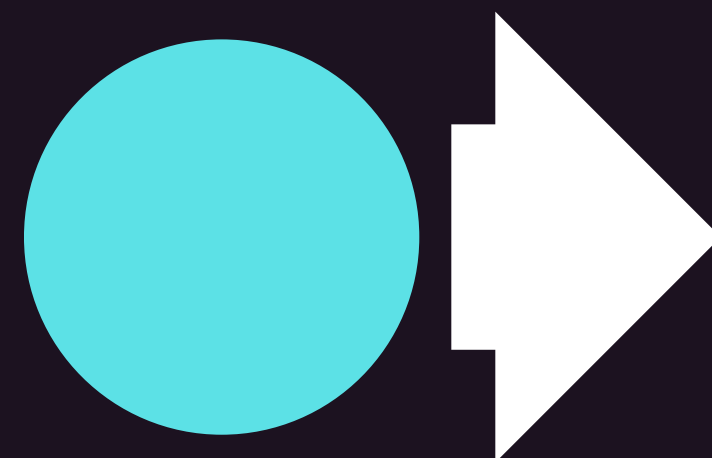
**Message
Connect**

PHASES OF THE SPIRITUAL JOURNEY FOR NEW BELIEVERS

Phase Two | Connect Group



Book One



Book 2

DEFINITION OF TERMS FOR SPIRITUAL JOURNEY

One Verse - offers a straightforward and systematic biblical approach to explaining the plan of salvation, serving as the foundational step for discipleship.

DEFINITION OF TERMS FOR SPIRITUAL JOURNEY

Follow-through One Verse - This follow-up activity aims to help new Christians understand their relationship with Jesus Christ better. We want to build a sense of camaraderie and support for each person's spiritual journey.

DEFINITION OF TERMS FOR SPIRITUAL JOURNEY

Message Connect is part of the "One Verse Phase" where the "sharer" imparts what they have learned from the Sunday Worship Message, and it is also where they challenge the new Christian to enroll in the Connect Group.

DEFINITION OF TERMS FOR VISION STRATEGY

Learn is a stage in the Vision strategy where individuals learn how to lead a connect group, added to their ongoing activities as a sharer and member of the connect group.

DEFINITION OF TERMS FOR VISION STRATEGY

Lead is the Ultimate stage in the Vision strategy where individuals lead a connect group or multiple connect groups.

**ANOTHER MARK OF A
SUCCESSFUL CHRISTIAN IS**

**2. PLUGGING INTO
THE VISION
STRATEGY.**

**"YOU LOSE YOUR WAY WHEN YOU
LOSE YOUR WHY!"**





**"IT HAS ALWAYS BEEN MY
AMBITION TO PREACH THE
GOSPEL WHERE CHRIST WAS NOT
KNOWN, SO THAT I WOULD NOT
BE BUILDING ON SOMEONE ELSE'S
FOUNDATION."**

ROMANS 15:20

**CCM PROVIDES DIFFERENT
ACTIVITIES TO HELP YOU KEEP
YOUR PATH VIBRANT:**

- **JOIN OR HOST A ONE VERSE WEEKEND**
- **ENROLL IN A DJK CONNECT GROUP**
- **START/INVOLVED A HOME GROUP**
- **ATTEND A DOCTRINAL CLASS**
- **JOIN A SUPPORT GROUP**
- **HOST OR START A MARKETPLACE CONNECT GROUP**
- **ETC.**

**YET, ANOTHER MARK OF
A SUCCESSFUL CHRISTIAN
IS**

**3. CARING FOR
THE LOST
SOULS.**



**ORGANIZE A ONE VERSE
WEEKEND, HOME GROUP,
MARKET PLACE, CONNECT
GROUP**

SOME MARKS OF A SUCCESSFUL CHRISTIAN

- EMBRACES THE CLEAR VISION**
- PLUG IN TO THE VISION STRATEGY**
- CARES FOR THE LOST SOULS**

Is your personal vision clear? No matter where you are in life, walk with Jesus and align yourself with CCM's vision.

~PASTOR WESLEY