

# NEWS LETTER – NOVEMBER 2023

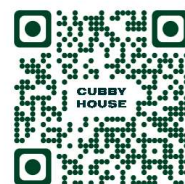


"Cubby House" 88A Como Road, Oyster Bay NSW 2225

PO Box 128 Oyster Bay NSW 2225.

Phone: - 0417 482 452; Email: - [secretary@oysterbaycubbyhouse.com.au](mailto:secretary@oysterbaycubbyhouse.com.au)

Website: [www.oysterbaycubbyhouse.com.au](http://www.oysterbaycubbyhouse.com.au)



## Executive Committee Contact Details

|                            |                |              |
|----------------------------|----------------|--------------|
| <b>PRESIDENT</b>           | Phillip Dean   | 0416 090 289 |
| <b>VICE PRESIDENT</b>      | Thomas Hill    | 0418 269 943 |
| <b>SECRETARY</b>           | Simon Hardman  | 0423 934 187 |
| <b>ASSISTANT SECRETARY</b> | Glenn Lavender | 0417 482 452 |
| <b>TREASURER</b>           | Steve Hooper   | 0401 987 003 |
| <b>ASSISTANT TREASURER</b> | Keith Jones    | 0466 602 641 |

## ***THIS ISSUE***

|                              |      |
|------------------------------|------|
| President's Report           | 2    |
| Training                     | 3    |
| Phil's fun facts             | 3-5  |
| Minutes of Committee Meeting | 6-7  |
| Executive Team               | 7    |
| Show and Tell notice         | 8-14 |
| Event Calendar 2023          | 15   |

## ***NOVEMBER BIRTHDAYS***

Stan Bailey  
Tom Hill  
John Jansons  
John Moss  
Malcolm Stewart  
Tony Welch  
Frank Williams

## ***PRESIDENTS REPORT***



The toy sale was a great success and many thanks to all the members who help make the toys throughout the year. Many of those same members turned up for the toy sale over the weekend of 4/5 November. Total gross sales were \$4,624.55. A special thank you to:

- Keith Jones for organising the making of the toys throughout the year
- Frank Williams for spending a lot of time preparing the toy pricing, coding and producing the many items using the laser cutter
- Ann Moss for the decorative painting and etching on countless number of toys

There is still no further information in regards to the proposed Masterplan Design for the Oyster Bay Oval which includes the Cubby House clubhouse. We will be looking to have discussions with the Council over the coming months.

All Cook Community Classic books of tickets were given to members to be sold. There is only a handful of books to be returned. If you have any outstanding books to be returned, please bring them to the November Maxi Day at the latest and give them to Keith Jones. This has generated \$1,200 plus a \$30 donation for the club.

Upcoming events:

- Resin Information Session – 21<sup>st</sup> November 2023 @ 6pm at the Clubhouse
- Toys to be picked up by the charities Wednesday 22/11/2023
- Bunnings Kirrawee Christmas Market – Thursday 7/12/2023 from 6pm to 8pm. If you help out it would be appreciated

Until next time continue to enjoy your woodturning and/or woodworking.

Phil Dean  
President

Attention Everyone,

This Movember I'm growing my moustache (actually a full beard) for 30 days and moving for men's health. I have joined a team called North Ramsgate Swimmers and I'm doing it to raise funds for Movember. I really need your support for this very important issue:

<https://movember.com/m/15135960?mc=5>

I'm supporting Movember because they're tackling some of the most significant health issues faced by men. Your donations will help them stop men dying too young.

There are two ways you can contribute to my Mo growing effort:

Donate online at <https://movember.com/m/15135960?mc=5>

Or, write a cheque to 'Movember' referencing my registration ID (15135960) and mail it to: Movember, PO Box 60, East Melbourne, VIC 3002, Australia

Learn about the important work Movember is funding and the impact your donation will have:

<https://au.movember.com/programs/cause?mc=5>

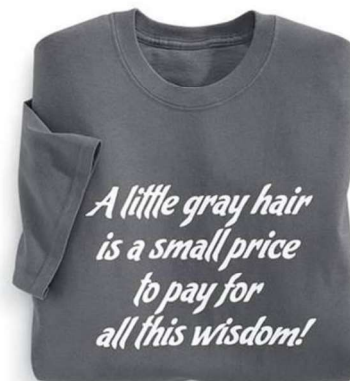
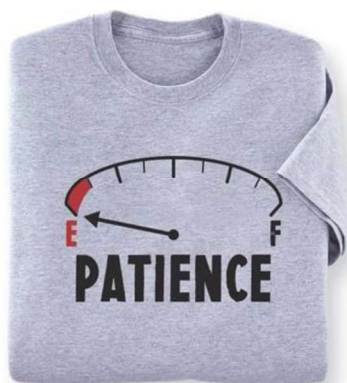
There's a lot riding on this moustache, so thank you. I appreciate your support!

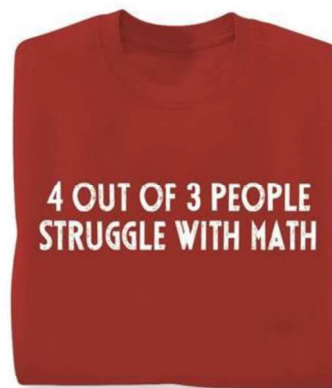
*Mo Bro Phil Dean*

## TRAINING

Our trainer, John Moss has indicated that the next training courses will commence in early February 2024. There may have been some members who have indicated that they wish to do the course however John has been largely unavailable over recent weeks. It would be appreciated if you could contact Phil Dean on 0416 090289 in early January 2024 so we can start to organise the first course.

## OLDER PEOPLE'S T-SHIRTS!





The following article was found in a 2006 Australian Woodworker magazine. A few of the older members would remember Frank Bollins

# Vale the Man on the Can

by Paul Gregson

Over the last 10-15 years most of the woodworking fraternity would have at some time used Watty's Fade Resisting Stain (spirit based stain) and many would have wondered who was the fellow in the check shirt attending a chair.

Well, that was Frank — Frank Bollins of Peakhurst.

Frank was born in 1918. While he 'mucked around' with wood at primary school, he followed his father, a rail motor fitter, into the railway trades. He was apprenticed as a tinsmith, a trade that later became known as a sheet metal worker.

His proficiency in his trade saw him elected as an organiser in the Sheet Metal Workers Union and then as the first elected State President of the Amalgamated Metal Workers Union.

His involvement in the encouragement of apprentices in the Amalgamated Metal Spinning Trades Course led him to the smell of sawdust. He met George Hatfield, John Ewart and George Sutton and subsequently enrolled in the woodturning course at Sydney TAFE. He also took up carving with Peter Otto and his son Laurens.

I met Frank in the early days of the Woodturners Guild of NSW when he had been elected Vice President. He was more than a competent complete woodworker — he was a good listener, obviously of good discipline and an eager mentor. I always found Frank to be an all round good bloke.



For four years I judged the woodwork at the Sydney Royal Easter Show. I was pleased for and thanked by Frank who received first and second places and my Certificate for Outstanding Woodwork. For those not aware, at the Show the judges award prizes to an entry number — the name of the entrant is only revealed by the RAS at the completion of judging.

As a measure of Frank's generosity, many have benefited from his thoughtful donations to friends of the precious tools he had accumulated over his life. He made these donations when he realised his time was approaching. I am the proud recipient of two of his furniture books. Gifts like these are always special and do

bring a lump to your throat.

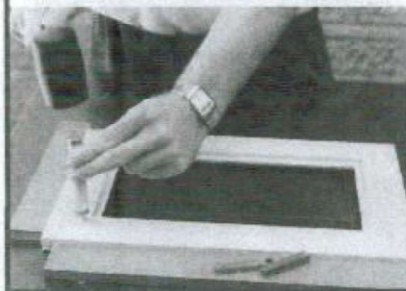
Frank passed away last year. His friends at the Southern Region Woodturners Guild and The Cubby House have lost an enthusiastic mind and mentor.

So if you want to have a look at Frank, go to the workshop and pick up the Watty's FRS can with the previous artwork. That was him — the Man on the Can.

So long Frank. It was a privilege to have known you along the way.

Thanks go to Gavin Wenham at The Cubby House for some of the information on Frank Bollins, and to Watty for the above image and permission to publish it. W

## VEEZY FRAMING TOOLS



### Veezy Mitre Guide

Bolts onto your Triton, cuts perfect mitres every time. To join 4, 5, 6 and 8 sides. Why haven't mitres always been cut this way! \$33

### Veezy Nailer

A must for the serious craftsman. Joins MDF, pine, hardwoods, delicate mouldings, recycled timbers including cypress pine and fence palings. \$29

### Veezy Point Driver

Easily puts flexipoints and pins into the back of frames to fit up your art work. \$7.50

### Veezy Mat Cutter & Guide Rule

Cuts mat at 45° to give your frames that professional look. \$65

Designed and manufactured in Australia.

### VEEZY PRODUCTS GUARANTEED TO WORK.

C.L. Craft Products

15 Railway Street, Cowra NSW 2794 Phone Fax: (02) 6341 2119

Email: veezy@aanet.com.au Website: www.veezy.com.au

**Committee Meeting held at the Cubby House Oyster Bay  
Monday 13<sup>th</sup> November 2023 at 10am**

## MINUTES

- 1 Meeting opened** by the President at 10:03am
- 2 Attendees:** 9  
Committee: Phil Dean (President), Tom Hill (Vice President), Simon Hardman (Secretary), Alan Pentecost (Committee Member), David Coles (Committee Member).  
Ordinary Members: Glenn Lavender, Keith Jones, Keith Moses, Val Lipping.  
**Apologies:** 3  
Steve Hooper (Treasurer), Craig Lewis (Committee Member), Frank Williams.
- 3 Minutes** of the Committee Meeting dated 16<sup>th</sup> October 2023, as circulated previously, discussed and confirmed (Moved Keith Jones, Seconded Tom Hill).  
No business arising from the minutes.
- 4 Correspondence**  
    Incoming - NIL  
    Outgoing – NIL
- 5 Reports:**  
President – see written report in Newsletter,  
  
Secretary (Glenn Lavender) – The recent Toy Sale was well patronized, largely due to Social Media advertising. Positive feedback from the community. Social Media represents a good opportunity for future events and marketing more broadly.  
– Commissioned project (18 seat tops) progressing well.  
– *Barry Belford seeks 1-2 volunteers for kitchen duties at Maxi Day please.*  
– Now handing over Secretary duties in full to Simon Hardman.  
  
Treasurer (via Phil and Keith) – Toy Sale gross income \$4,624.55 (approx. \$4,300 net); still being reconciled.  
– Keith holding approx. \$1,500 in other income.  
  
No business arising from the Reports
- 6 General Business:**
  - October Maxi Day - Saturday, 18/11/2023 – Demonstration is a ‘Team Turning Challenge’. Host – Simon Hardman.
  - Toy sale weekend – very positive results as mentioned above.
  - Cook Classic tickets – 60 books issued, 5 remain outstanding (due for return at 18/11 Maxi Day). If all returned, \$1,200 income for the club.

– Special mention to President Phil who sold 17 books!

- Information session on Resin – Tuesday 21/11/2023 @ 6pm. *Call for all members to attend (free event).*  
– Michael from Norglass (supplier) and Stuart from Sutherland Paint Wholesalers (stockist) presenting.
- Toys being picked up by Charities – Wednesday 22/11/2023 @ 10am. Thanks to all that have contributed to toy making throughout the year.  
– Special mention goes to Anne Moss, Frank Williams and Keith Jones for their tireless contributions.
- Bunnings Market Evening – Thursday 7/12/2023 from 6pm to 8pm. *Call for volunteers to man the stall and contribute wares for sale please.*
- Safety Induction Program – on track for implementation in January 2024, documentation well underway, workshop supervisor’s tabards on hand, first aid component being planned.  
– Special mention to Frank Williams and John Moss for their leadership.
- Movember – Phil is participating, committing to walk 300km in the month and raising funds. *Please see the link in his report for donations to men’s health.*

7 **Meeting closed** by the President at 10:55am

Simon Hardman  
Secretary 2023/2024

## Cubby House Turners and Woodies Committee for 2023-2024

### EXECUTIVE COMMITTEE

#### **PRESIDENT**

Phillip Dean  
0416 090 289



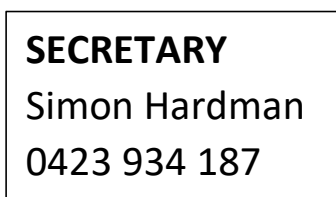
#### **VICE PRESIDENT**

Thomas Hill  
0418 269 943



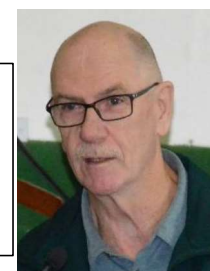
#### **SECRETARY**

Simon Hardman  
0423 934 187



#### **TREASURER**

Steve Hooper  
0401 987 003



**Ordinary committee members – Alan Pentecost, David Cole & Craig Lewis**

## ***Show and Tell - OCTOBER***

On the table

Stephen Chin – A big smile and a little bowl



Malcolm Stewart – I watching you...







Keith Moses – watched by Keith Jones



John Jansons



John Moss – Hello Ducky



Keith Jones

Keith Moses – Hello Honey



John Moss – 3 little ducks



John Jansons



Keith Moses



Keith Moses – Who has a new trunk.



Malcolm Stewart – Best in shown October Maxi day





## EVENT CALENDAR 2023/2024

Note: - The following information may be subject to change in date or content,  
if in doubt contact a committee member.

### November 2023

|     |                  |   |
|-----|------------------|---|
| Wed | 1 <sup>st</sup>  | Mini Day  |
| Sat | 4 <sup>th</sup>  | Mini Day  |
| Tue | 7 <sup>th</sup>  | Mini Night 1900 to 2100 hrs   |
| Wed | 8 <sup>th</sup>  | Mini Day  |
| Mon | 13 <sup>th</sup> | Mini Day &<br>Committee Meeting @ 10am                                |
| Tue | 14 <sup>th</sup> | Mini Night 1900 to 2100 hrs   |
| Wed | 15 <sup>th</sup> | Mini Day  |
| Sat | 18 <sup>th</sup> | Maxi Day – Host – Simon Hardman<br>Demonstration: Returning Challenge |
| Tue | 21 <sup>st</sup> | Mini Night 1900 to 2100 hrs   |
| Wed | 22 <sup>nd</sup> | Mini Day  |
| Tue | 28 <sup>th</sup> | Mini Night 1900 to 2100 hrs   |
| Wed | 29 <sup>th</sup> | Mini Day  |

### December 2023

|     |                  |  |
|-----|------------------|--|
| Sat | 2 <sup>nd</sup>  | Mini Day                                     |
| Tue | 5 <sup>th</sup>  | Mini Night 1700 to 2100 hrs                  |
| Wed | 6 <sup>th</sup>  | Mini Day                                     |
| Mon | 11 <sup>th</sup> | Mini Day &<br>Committee Meeting @ 10am       |
| Tue | 12 <sup>th</sup> | Mini Night 1700 to 2100 hrs                  |
| Wed | 13 <sup>th</sup> | Mini Day                                     |
| Sat | 16 <sup>th</sup> | Maxi Day – Host Phil Dean<br>Christmas Party |
| Tue | 19 <sup>th</sup> | Mini Night 1700 to 2100 hrs                  |
| Wed | 20 <sup>th</sup> | Mini Day                                     |
| Tue | 26 <sup>th</sup> | Mini Night 1700 to 2100 hrs                  |
| Wed | 27 <sup>th</sup> | Mini Day                                     |

### January 2024

|     |                  |  |
|-----|------------------|--|
| Tue | 2 <sup>nd</sup>  | Mini Night 1700 to 2100 hrs  |
| Wed | 3 <sup>rd</sup>  | Mini Day   |
| Sat | 6 <sup>th</sup>  | Mini Day   |
| Tue | 9 <sup>th</sup>  | Mini Night 1700 to 2100 hrs  |
| Wed | 10 <sup>th</sup> | Mini Day   |
| Mon | 15 <sup>th</sup> | Mini Day &<br>Committee Meeting @ 10am   |
| Tue | 16 <sup>th</sup> | Mini Night 1700 to 2100 hrs  |
| Wed | 17 <sup>th</sup> | Mini day   |
| Sat | 20 <sup>th</sup> | Maxi Day – Host – Phil Dean<br>Demonstration – Open & Judging of<br>2023 winning entries |
| Tue | 23 <sup>rd</sup> | Mini Night 1700 to 2100 hrs  |
| Wed | 24 <sup>th</sup> | Mini Day   |
| Tue | 30 <sup>th</sup> | Mini Night 1700 to 2100 hrs  |

|     |                  |          |
|-----|------------------|----------|
| Wed | 31 <sup>st</sup> | Mini Day |
|-----|------------------|----------|

### February 2024

|     |                  |  |
|-----|------------------|--|
| Sat | 3 <sup>rd</sup>  | Mini Day                                     |
| Tue | 6 <sup>th</sup>  | Mini Night 1700 to 2100hrs                   |
| Wed | 7 <sup>th</sup>  | Mini Day                                     |
| Mon | 12 <sup>th</sup> | Mini Day &<br>Committee Meeting @ 10am       |
| Tue | 13 <sup>th</sup> | Mini Night 1700 to 2100 hrs                  |
| Wed | 14 <sup>th</sup> | Mini Day                                     |
| Sat | 17 <sup>th</sup> | Maxi Day – Host -----<br>Demonstration ----- |
| Tue | 20 <sup>th</sup> | Mini Night 1700 to 2100 hrs                  |
| Wed | 21 <sup>st</sup> | Mini Day                                     |
| Tue | 27 <sup>th</sup> | Mini Night 1700 to 2100 hrs                  |
| Wed | 28 <sup>th</sup> | Mini Day                                     |

### March 2024

|      |                  |  |
|------|------------------|--|
| Wed  | 1 <sup>st</sup>  | Mini Day                                       |
| Sat  | 4 <sup>th</sup>  | Mini Day                                       |
| Tues | 7 <sup>th</sup>  | Mini Night 1900 to 2100 hrs                    |
| Wed  | 8 <sup>th</sup>  | Mini Day                                       |
| Mon  | 13 <sup>th</sup> | Mini Day &<br>Committee Meeting @ 10am         |
| Tue  | 14 <sup>th</sup> | Mini Night 1900 to 2100 hrs                    |
| Wed  | 15 <sup>th</sup> | Mini Day                                       |
| Sat  | 18 <sup>th</sup> | Maxi Day – Host -----<br>Demonstration – ----- |
| Tue  | 21 <sup>st</sup> | Mini Night 1900 to 2100 hrs                    |
| Wed  | 22 <sup>nd</sup> | Mini Day                                       |
| Tue  | 28 <sup>th</sup> | Mini Night 1900 to 2100 hrs                    |
| Wed  | 29 <sup>th</sup> | Mini Day                                       |

### April 2024

|     |                  |  |
|-----|------------------|--|
| Tue | 2 <sup>nd</sup>  | Mini Night 1900 to 2100 hrs                    |
| Wed | 3 <sup>rd</sup>  | Mini Day                                       |
| Sat | 6 <sup>th</sup>  | Mini Day                                       |
| Tue | 9 <sup>th</sup>  | Mini Night 1900 to 2100 hrs                    |
| Wed | 10 <sup>th</sup> | Mini Day                                       |
| Mon | 15 <sup>th</sup> | Mini Day &<br>Committee Meeting @ 10am         |
| Tue | 16 <sup>th</sup> | Mini Night 1900 to 2100 hrs                    |
| Wed | 17 <sup>th</sup> | Mini Day                                       |
| Sat | 20 <sup>th</sup> | Maxi Day – Host -----<br>Demonstration – ----- |
| Tue | 23 <sup>rd</sup> | Mini Night 1900 to 2100 hrs                    |
| Wed | 24 <sup>th</sup> | Mini Day                                       |
| Tue | 30 <sup>th</sup> | Mini Night 1900 to 2100 hrs                    |