

NIPUN KAPUR SOHAL

THE ULTIMATE GUIDE TO

RETINOL

ACHIEVING HEALTHY, BEAUTIFUL SKIN

Introduction: The Retinol Philosophy

In aesthetic dermatology, the "Retinol Road Map" is not merely a product list; it is a strategic progression based on the biological conversion steps of Vitamin A. To be utilized by the skin, all topical retinoids must eventually convert into Retinoic Acid. The pathway follows a strict hierarchy: Retinyl Esters → Retinol → Retinal (Retinaldehyde) → Retinoic Acid.

As a cosmetic formulator, I advise patients to view retinoid use as a long-term commitment to "retinization"—the physiological process during which the skin adapts to the molecule. Success requires a tiered approach, phasing in higher potencies only after the skin barrier has been fortified, ensuring cellular transformation without the inflammation often associated with medical-grade actives.



Phase 1: The Beginner's Entry (20s & Early 30s)

For those initiating their retinoid journey, the objective is to stimulate epidermal turnover without compromising the stratum corneum.

- Focus Product: The Derma Co x Dr. V Skin Renew Peptide Retinol Serum Cream, ROC retinol moisturizer, Neutrogena Retinol Moisturiser, Olay retinol 24 are some of the options
- Dr V skin renew Ingredient Analysis: This formulation is technically superior to many luxury "beginner" options because it utilizes Encapsulated Retinal. Encapsulation allows for a "slow-release" effect, delivering the active deeper into the dermis while bypassing surface-level irritation.
- Comparative Insight: Contrast this with the viral Glow Recipe Blackberry Retinol. Clinical analysis reveals that the Glow Recipe version uses a "weak form" of retinal and a derivative that is "next to weak" in terms of biological conversion. The Derma Co x Dr. V formulation is significantly more effective because it marries encapsulated retinal with Vitamin C and peptides, offering a high-performance delivery system that the luxury alternative lacks.





Phase 2: Mid-Strength Progression

Once the skin has successfully navigated the initial retinization period, a transition to mid-strength retinoids is necessary to achieve deeper structural changes.

- Focus Product: ROC Retinol Correxion Deep Wrinkle Serum, or retinol 0.2% 0.3% from the Ordinary & Minimalist
- Efficacy Notes: This is my primary recommendation for those seeking an "inherent glow" and "visible plumpness." The stabilized retinol used here is of a grade that produces quicker cell turnover than entry-level esters.
- Barrier Support: To mitigate the dryness associated with increased potency, the formula integrates Glycerine and Squalane, providing the necessary lipid support to maintain a healthy barrier while the retinol works.



Phase 3: Advanced Retinoid Mastery

Advanced mastery is reserved for the veteran user whose skin has been conditioned through Phases 1 and 2.

- Focus Product: Sunday Riley A+ High-Dose Retinoid Serum.
- Usage Directive: This is a high-dose serum specifically engineered to bridge the gap between over-the-counter products and prescription-strength Tretinoin. It should only be used by those who have achieved total tolerance, as its concentration is designed for maximum clinical impact on deep-set wrinkles and sun damage.

Technical Warning: The "Retinyl Acetate" Pitfall

In the luxury skincare market, price is frequently disconnected from performance. A primary example is found in ultra-luxury "anti-aging" creams, such as those from Clé de Peau.

Formulation analysis of these high-cost products often reveals the use of Retinyl Acetate or Retinyl Palmitate. These are retinoid esters—the weakest form of Vitamin A. More concerning is their concentration; in several luxury formulations, these ingredients sit at positions 66 and 67 on the ingredient list. At such negligible levels, they are effectively "doing nothing" for the skin. This is "shady marketing" that relies on the prestige of the brand rather than the efficacy of the molecule. To ensure biological activity, always prioritize "Retinol" or "Retinal" (Retinaldehyde) over these weak esters



Targeted Treatment: The Eye Area

The periorbital region is thinner and more vascular than the rest of the face, requiring a more specialized approach than a standard face cream.

- Clinical Comparison: While the Drunk Elephant A-Passioni Eye Cream (0.1% Retinol) is a respectable formula, the Minimalist Vitamin K + Retinal Eye Cream is clinically superior.
- Ingredient Highlight: The Minimalist version utilizes Retinal, which is biologically stronger than the Retinol found in the Drunk Elephant version. Furthermore, the Minimalist cream contains three distinct types of peptides—compared to the more basic peptide profile of the luxury option. The inclusion of Vitamin K is the critical differentiator, as it specifically targets the vascular component of dark circles, while Retinal and Caffeine address fine lines and puffiness.



A close-up photograph of a hand holding a green, textured retinol patch. The patch is being held against a brown, textured background. The text "How to use retinol?" is overlaid in white, bold font across the center of the image.

How to use retinol?

To safely navigate this roadmap and achieve professional results at home, follow these five clinical rules:

1. Start Slow: Apply your retinoid only 2–3 times per week. Do not increase frequency until the skin shows no signs of redness or peeling.

2. The "Sandwich Method": For beginners, apply a thin layer of moisturizer, then your retinoid, followed by a second layer of moisturizer. This buffers the active and reduces transepidermal water loss.

3. Absolute Necessity of SPF: Retinoids accelerate the emergence of new, sensitive skin cells. Without daily application of a high-factor SPF, you risk significant UV damage, negating all anti-aging benefits.

4. Prioritize Opaque, Airless Packaging: Because Vitamin A is highly prone to oxidation, only purchase products in opaque tubes or airless pumps (like ROC or Derma Co). Avoid retinoids in clear jars, as light and air will render the formula inactive.

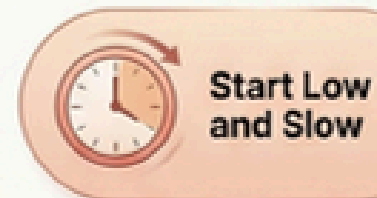
5. Night Use Only: Retinoids are photosensitive and degrade in sunlight. They should be reserved exclusively for the evening routine to ensure the molecule remains stable and active.



The Retinol Roadmap:

A Guide to Choosing Your Perfect Strength

THE RETINOL PROTOCOL FOR SUCCESS



Start Low and Slow

Begin by applying your chosen product only 2-3 times per week to build tolerance.



Avoid Weak Retinyl Esters

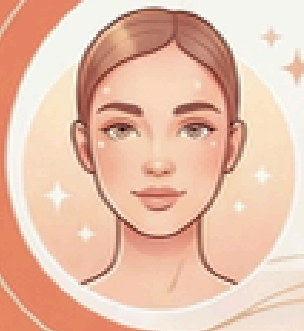
Steer clear of Retinyl Acetate and Retinyl Palmitate, they are too weak for real results.

Retinal vs. Retinol



Retinal (Retinaldehyde) is stronger and works faster than standard Retinol.

CHOOSING YOUR LEVEL



BEGINNER & 20s-30s SELECTION



Use The Derma Co x Dr. V

KEY INGREDIENTS:



Use The Derma Co x Dr. V for a gentle, multi-action peptide and retinal blend.



ROC Retinol Correxion offers professional-grade stabilized retinol for a noticeable skin glow.

MID-STRENGTH FAVORITES



ADVANCED HIGH-POTENCY PICKS



KEY INGREDIENTS:



Use Sunday Riley A+ or Drunk Elephant once skin is fully acclimated to retinoids.

Nipun Kapur Sohal

Thank you

