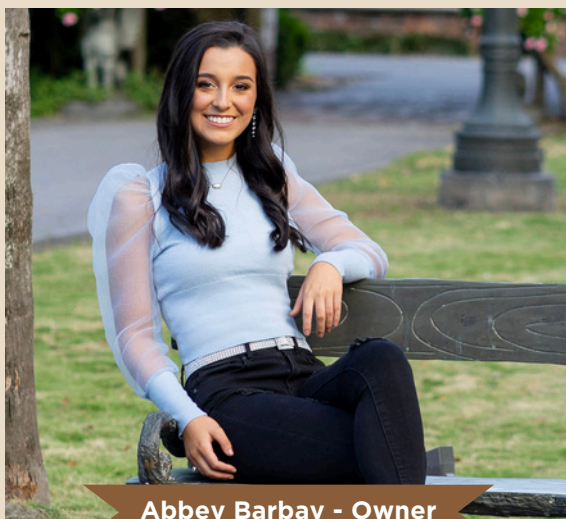


# Abbey's Creative Designs - Design Professional Onboarding Guide



ABBEY'S  
CREATIVE  
DESIGNS

DESIGN ELEVATION MEETS CREATIVE DELEGATION



Abbey Barbay - Owner

## Services Provided

- Still Image Renderings
- Walkthrough Video Renderings

Each project includes a complete visual package with still images, a walkthrough video, and one round of minor revisions.

## Revision Policy

Minor revisions include small adjustments totaling up to three (3) hours of work and may be used for client review and refinement. Any significant scope changes or requests exceeding the included revision allowance may result in additional charges.

## Pricing Guide

Per-room pricing typically ranges from \$350-\$650, based on room type. All projects receive a custom quote. Final pricing may vary depending on complexity, exterior views, or the number of rooms included. Projects involving multiple rooms receive a 10% discount on the total project price.

## Process

- Step 1:** Inquiry via email/wesbite or a brief consultation call
- Step 2:** Custom quote and estimated timeline provided
- Step 3:** Required materials submitted
- Step 4:** Draft renderings reviewed with minor revisions
- Step 5:** Final deliverables delivered digitally

## Portfolio

[Click Here to View](#)

### What I Need to Get Started

Floor plans/sketches with dimensions (PDF or AutoCAD)

Finish, fixture & material selections (images, colors, details)

Photos of existing space (if available)

Elevations, cabinetry, or custom detail drawings (if applicable)



Designed by: Streamline Interiors



### Client Testimonial

*Working with Abbey is an absolute pleasure. She's invested in her client's needs, offers thoughtful suggestions, and delivers beautifully detailed renders in an impressive timeframe. Her professionalism and creativity make the entire process seamless.*

*Boudousquie Interiors*