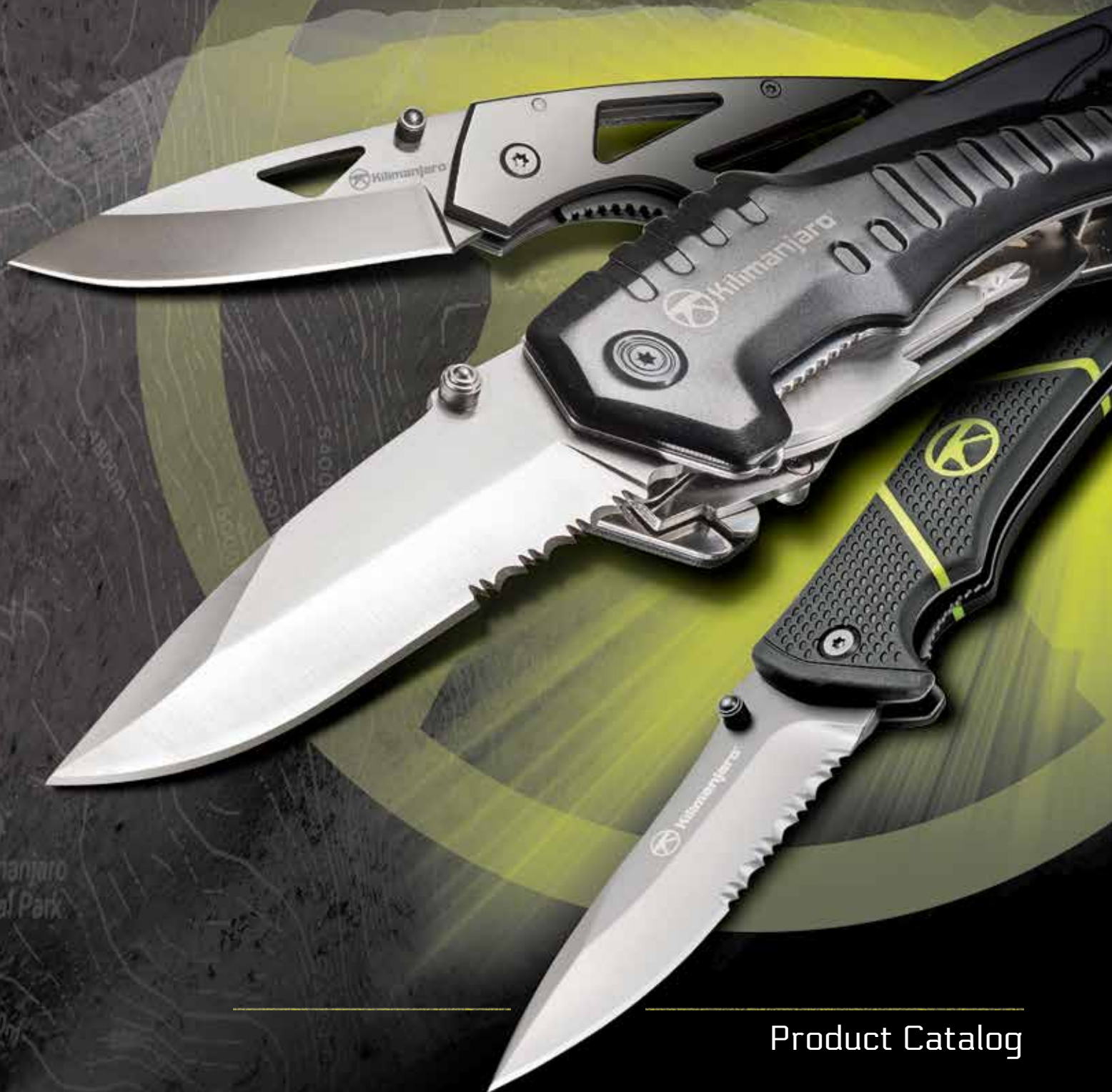




Kilimanjaro®

Explore... Adventure... Live...



Product Catalog



Kilimanjaro products are inspired by the largest free-standing mountain on the planet. Under the shadow of this monolith, explorers set out on a daunting challenge. This relentless spirit is ingrained in the design and craftsmanship of every Kilimanjaro product.

Explore... Adventure... Live...



Contents

Knives	4	Lighting	44
Everyday	4	Stick light	46
Morsa	6	Extendable Light	47
Firma	7	Swivel Light	48
Makazi	8	Compact Work Light	49
Prota	9	Carabiner Light	50
Vertice	10	Roto Lite	51
Outdoor	12	Tactical Flashlight	52
Kibo	14-15	Penlight	53
Machetes BM24	16	Spotlight	54
Machetes BM21 & TM16	17	Diffuser Headlamp	55
Shira Axe	18	Packs and Bags	56
Tactical	20	Tactical Bags	59
Shira	22	3-Way Modular Deployment	59
Stretta	23	Concealed Carry Modular Response	59
Allatro	24	Tactical Packs	60
Annex	25	Transport Modular Assault	60
Caula	26	Operator Modular Assault	60
UTAC	27	Tactical Elite Bags	62
Vello	28	Parata Travel Duffel	63
Hunting	30	Tectus Tactical Briefcase Conceal ...	63
Victus	32	Tactical Elite Packs	64
Talbot	33	Mirati Backpack	64
Fishing	34	Contego Backpack	64
Fish Knife Sets	35	Warranty	66
Multi-Tools	36	Kiligear Limited Lifetime Warranty ...	66
Industrial	38	Kilimanjaro Lifetime Warranty	67
Magnus	38		
Rappel	39		
Rappel-II	40		
Ballast	41		
Kickstand	42		
Everyday	43		
Ascend	43		

Everyday





Morsa™

Whether it's the elegant design of the G10 handle with recessed liners, or the shape and quality of the Titanium coated 8Cr13MoV stainless steel blade (910028), this fast and smooth flipper opening folding knife is sure to become an EDC favorite.

910027 DROP POINT



910028 DROP POINT TITANIUM NITRIDE FINISH



FEATURES

- 8Cr13MoV Stainless Steel Blade
- G10 Handle
- Flipper Design
- Liner Lock



SPECIFICATIONS

OVERALL LENGTH	8.3 in
BLADE LENGTH	3.5 in
CLOSED LENGTH	4.8 in.
WEIGHT	5.2 oz.

Firma™

Everyday

With an ergonomic tapered handle and curved drop point blade, the Firma makes a versatile everyday folder. Its sleek design and high quality blade makes this an appealing knife that will be around a long time.



910016 DROP POINT



910015 DROP POINT BLACK SATIN FINISH



FEATURES

- 8Cr13MoV Stainless Steel Blade
- G10 Handle
- Dual Thumb Stud
- Liner Lock



SPECIFICATIONS

OVERALL LENGTH	8.1 in
BLADE LENGTH	3.2 in.
CLOSED LENGTH	4.9 in.
WEIGHT	5.3 oz.

Makazi™

The Makazi combines a rapid flipper opening with a quality stainless steel blade for efficiency. And with an ergonomic handle that almost wraps your hand, this knife is not only functional, but extremely comfortable to use.

910059 DROP POINT



910083 DROP POINT BLACK SATIN FINISH



FEATURES

- 8Cr13MoV Stainless Steel Blade
- G10 Handle
- Flipper or Thumb Stud Opening
- Liner Lock



SPECIFICATIONS

OVERALL LENGTH	8.8 in.
BLADE LENGTH	3.8 in.
CLOSED LENGTH	5.1 in.
WEIGHT	4.8 oz.

Prota™

Everyday

Featuring the patent pending Express™ spring assist, the Prota is a fast opening knife with classic design and proportions. A high quality stainless steel blade, G10 handle, and a folded length under 4" all combine to make this an instant favorite.



910200 FEATURES

- 8Cr13MoV Stainless Steel Blade
- G10 Handle
- Express™ Spring Assist Opening
- Liner Lock

EXPRESS™ ASSIST



PATENT PENDING

SPECIFICATIONS

OVERALL LENGTH	6.6 in.
BLADE LENGTH	2.6 in.
CLOSED LENGTH	3.8 in.
WEIGHT	2.9 oz.

Vertice™

Minimalist design and quality features make this lightweight folder an everyday favorite. The Vertice is featured in three different sizes, so there will be one to fit your preferences perfectly.

910060 DROP POINT LARGE



SPECIFICATIONS

OVERALL LENGTH	7.3 in.
BLADE LENGTH	3 in.
CLOSED LENGTH	4.4 in.
WEIGHT	4 oz.

910061 DROP POINT MEDIUM



SPECIFICATIONS

OVERALL LENGTH	6.1 in.
BLADE LENGTH	2.6 in.
CLOSED LENGTH	3.6 in.
WEIGHT	3 oz.

910062 DROP POINT SMALL



SPECIFICATIONS

OVERALL LENGTH	5.1 in.
BLADE LENGTH	2.1 in.
CLOSED LENGTH	3 in.
WEIGHT	2.1 oz.

FEATURES

- 7Cr17MoV Stainless Steel Blade
- Titanium Nitride Finish
- Dual Thumb Stud
- Liner Lock
- Nail Nick (910062)



Kilimanjaro 6140,72km

Mount Everest 6691,45km

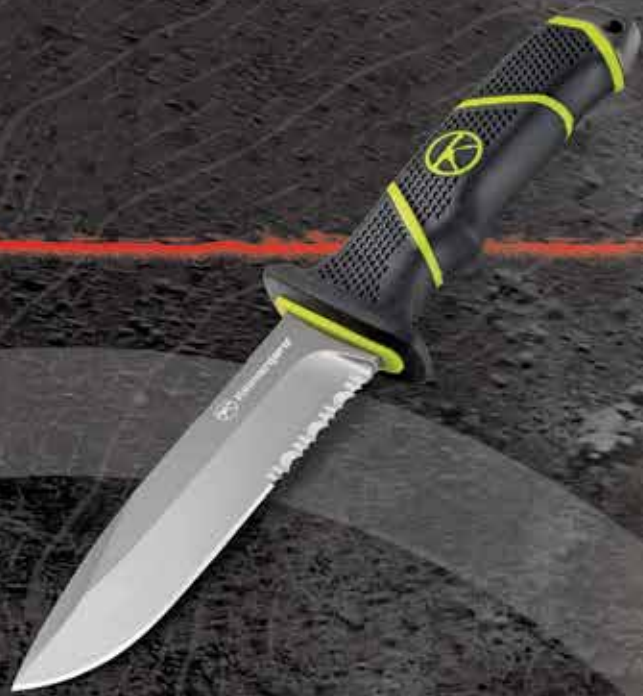
Schwarzenstein

Zugspitze 60,357km

Berlin 591,12 km

Großglockner 74,915 km

Outdoor





Kibo™

Named after one of the volcanic cones forming the summit of Kilimanjaro, this knife measuring nearly 10 inches in length and featuring an 8Cr13MoV semi-serrated stainless steel blade and double injection handle is a match for any climate and condition.



910091 FEATURES

- 8Cr13MoV Stainless Steel Blade
- Serrated Blade
- Titanium Nitride Finish
- Integrated Pommel
- Nylon Sheath

SPECIFICATIONS

OVERALL LENGTH	10 in.
BLADE LENGTH	5 in.
WEIGHT	8.2 oz.



Kibo™ Folders

Rounding out the Kibo™ family are 7 and 8 inch folders. These versatile knives are available with either a pocket clip or pouch, and utilize the same high quality blade and Titanium Nitride finish as the fixed blade.

910092 DROP POINT / SERRATED



SPECIFICATIONS

OVERALL LENGTH	8 in.
BLADE LENGTH	3.5 in.
CLOSED LENGTH	4.5 in.
WEIGHT	3.7 oz.



910093 DROP POINT / SERRATED



SPECIFICATIONS

OVERALL LENGTH	7 in.
BLADE LENGTH	3 in.
CLOSED LENGTH	4 in.
WEIGHT	2.9 oz.

FEATURES

- 8Cr13MoV Stainless Steel Blade
- Serrated Blade
- Titanium Nitride Finish
- Liner Lock
- Nylon Sheath (910092)
- Pocket Clip (910093)



Machetes BM24™

A D-shaped handle with double injection grip and paracord lanyard enable these 24 inch machetes to be used with confidence. Available in either a fine edge or fine edge with serrated back, each also comes with a protective nylon re-inforced sheath.

910038 FINE EDGE



SPECIFICATIONS

OVERALL LENGTH	24 in.
BLADE LENGTH	17.5 in.
WEIGHT	23.2 oz.
BLADE	3Cr13MoV Stainless Steel

910039 FINE EDGE / SERRATED BACK



SPECIFICATIONS

OVERALL LENGTH	24 in.
BLADE LENGTH	17.5 in.
WEIGHT	21.6 oz.
BLADE	3Cr13MoV Stainless Steel

FEATURES

- Adjustable Paracord Lanyard
- Comfortable D Handle
- Black Satin Finish
- Nylon Sheath



BM21™ & TM16™

These versatile long blades come in both 21 and 16 inch lengths for a variety of tasks. Rubberized ergonomic handles provide a comfortable non-slip grip. Both models include nylon re-inforced sheaths.

BM21™ 910040 FINE EDGE / SERRATED BACK



SPECIFICATIONS

OVERALL LENGTH	21 in.
BLADE LENGTH	14.2 in.
WEIGHT	18.4 oz.
BLADE	3Cr13MoV Stainless Steel



TM16™ 910041 TANTO EDGE / SERRATED BACK



SPECIFICATIONS

OVERALL LENGTH	16 in.
BLADE LENGTH	9.2 in.
WEIGHT	12.8 oz.
BLADE	3Cr13MoV Stainless Steel



FEATURES

- Rubberized Finish Grip
- Saw Back
- Nylon Sheath
- Paracord Lanyard (910040)



Shira™

Featuring a stainless steel blade with Titanium Nitride finish, the Shira™ not only appeals to the eye but also performs as expected. This versatile camp axe packs easily for a wide variety of uses and conditions.



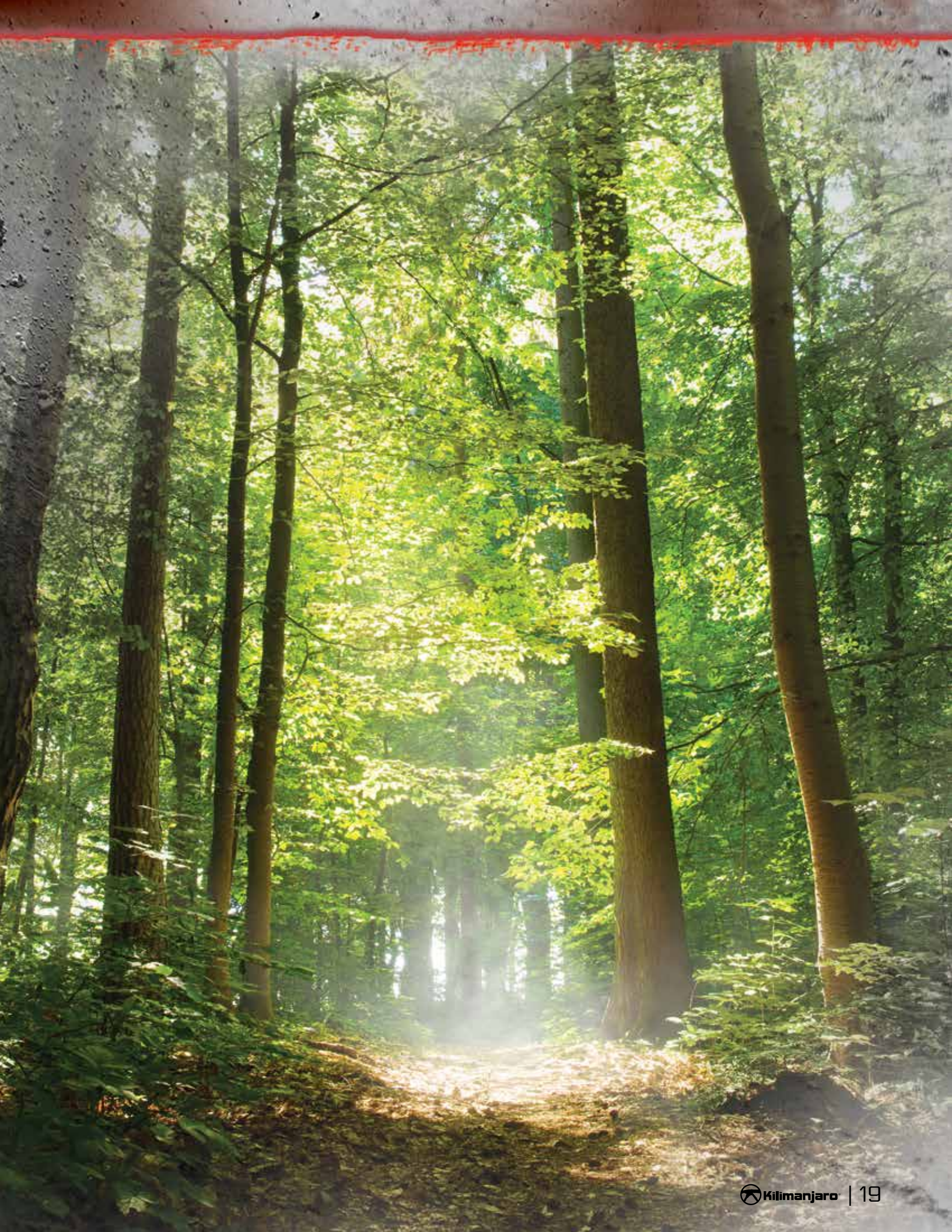
910095 FEATURES

- Full Tang Construction
- Titanium Nitride Finish
- Rubberized Handle Overlay
- Nylon Sheath



SPECIFICATIONS

OVERALL LENGTH	10 in.
BLADE WIDTH	2.9 in.
WEIGHT	14.2 oz.
BLADE	3Cr13MoV Stainless Steel



Tactical





Shira™

A 10" tactical knife meant to go anywhere and handle any job expected of it, the Shira™ combines full tang construction and non-reflective, high quality materials with a comfortable grip and weight. Named after one of Kilimanjaro's legendary volcanic peaks, this Titanium coated knife can take the heat.

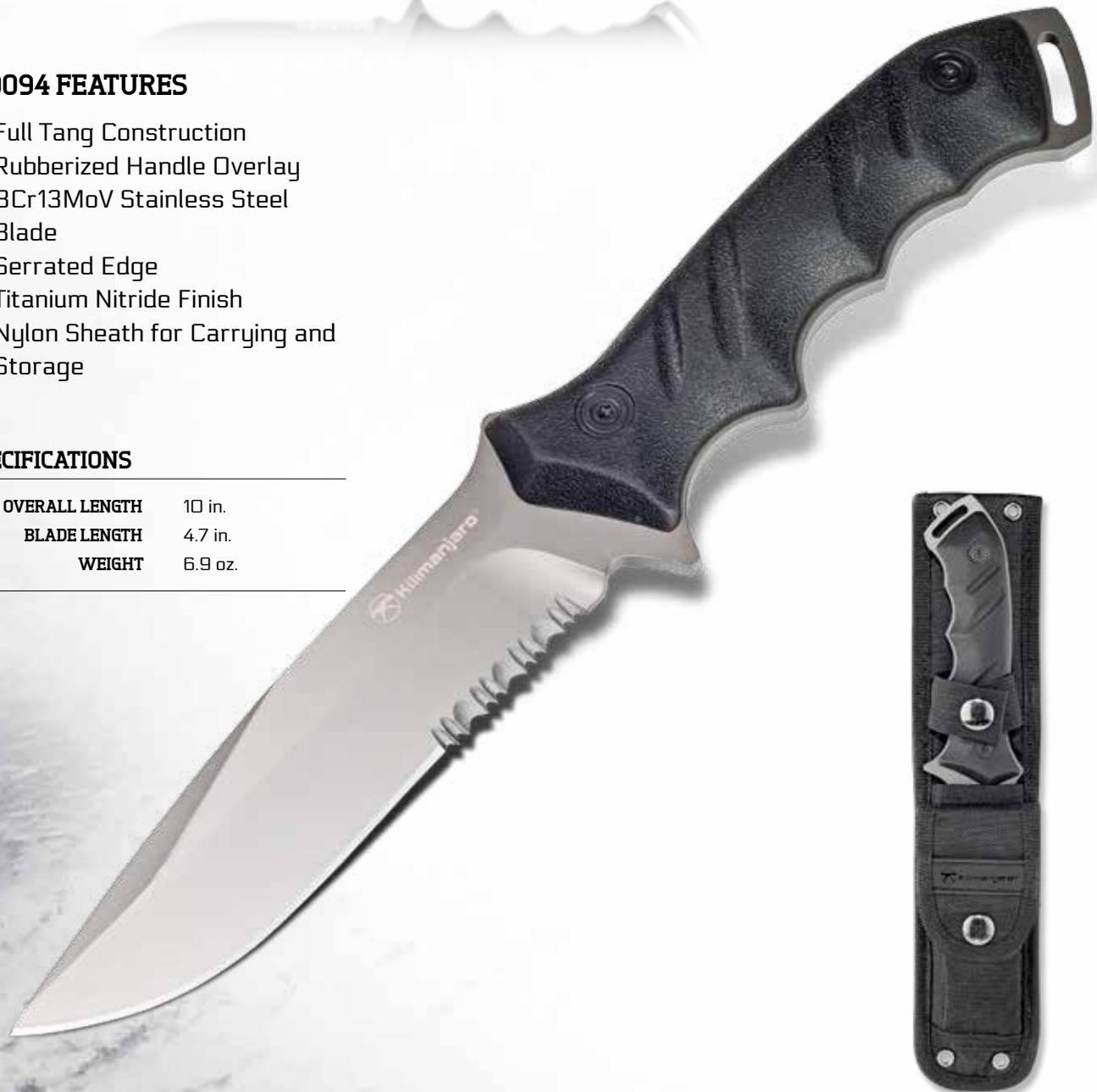


910094 FEATURES

- Full Tang Construction
- Rubberized Handle Overlay
- 8Cr13MoV Stainless Steel Blade
- Serrated Edge
- Titanium Nitride Finish
- Nylon Sheath for Carrying and Storage

SPECIFICATIONS

OVERALL LENGTH	10 in.
BLADE LENGTH	4.7 in.
WEIGHT	6.9 oz.



Stretta™

Compact and comfortable, the Stretta™ is certainly a knife you will want to keep hold of. A full tang with ergonomic handle and rubber overlay combine with a finger hole for excellent feel and grip. A nylon reinforced formed sheath with easy release and secure fit provides a variety of securing options



910106 FEATURES

- 8Cr13MoV Stainless Steel Blade
- Full Tang
- Rubberized Overlay
- Formed Sheath with Push Button Release
- Carry Chain Included



SPECIFICATIONS

OVERALL LENGTH	6.4 in.
BLADE LENGTH	3.2 in.
WEIGHT	3 oz.

Allatro™

A modified recurve blade and hefty diameter G10 handle provides a versatile and stylish knife with a solid feel that will make this a favorite of tactical enthusiasts. Available in polished and black finishes as well as EXPRESS™ Assist models.

910018 RECURVE

910116 RECURVE EXPRESS™ SPRING ASSIST



910019 RECURVE BLACK SATIN

910117 RECURVE BLACK SATIN EXPRESS™ SPRING ASSIST



FEATURES

- 8Cr13MoV Stainless Steel Blade
- G10 Handle
- Dual Thumb Stud
- Liner Lock

EXPRESS™ ASSIST



PATENT PENDING

SPECIFICATIONS

OVERALL LENGTH	8.3 in.
BLADE LENGTH	3.6 in.
CLOSED LENGTH	4.7 in.
WEIGHT	6.3 oz.

Annex™

This go-to folder is a perfect balance of ergonomics, blade proportion and weight. Its Titanium Nitride finish provides additional corrosion resistance and makes this a durable everyday favorite. Three separate blade options cover all the bases.



910029 DROP POINT



910030 DROP POINT SERRATED

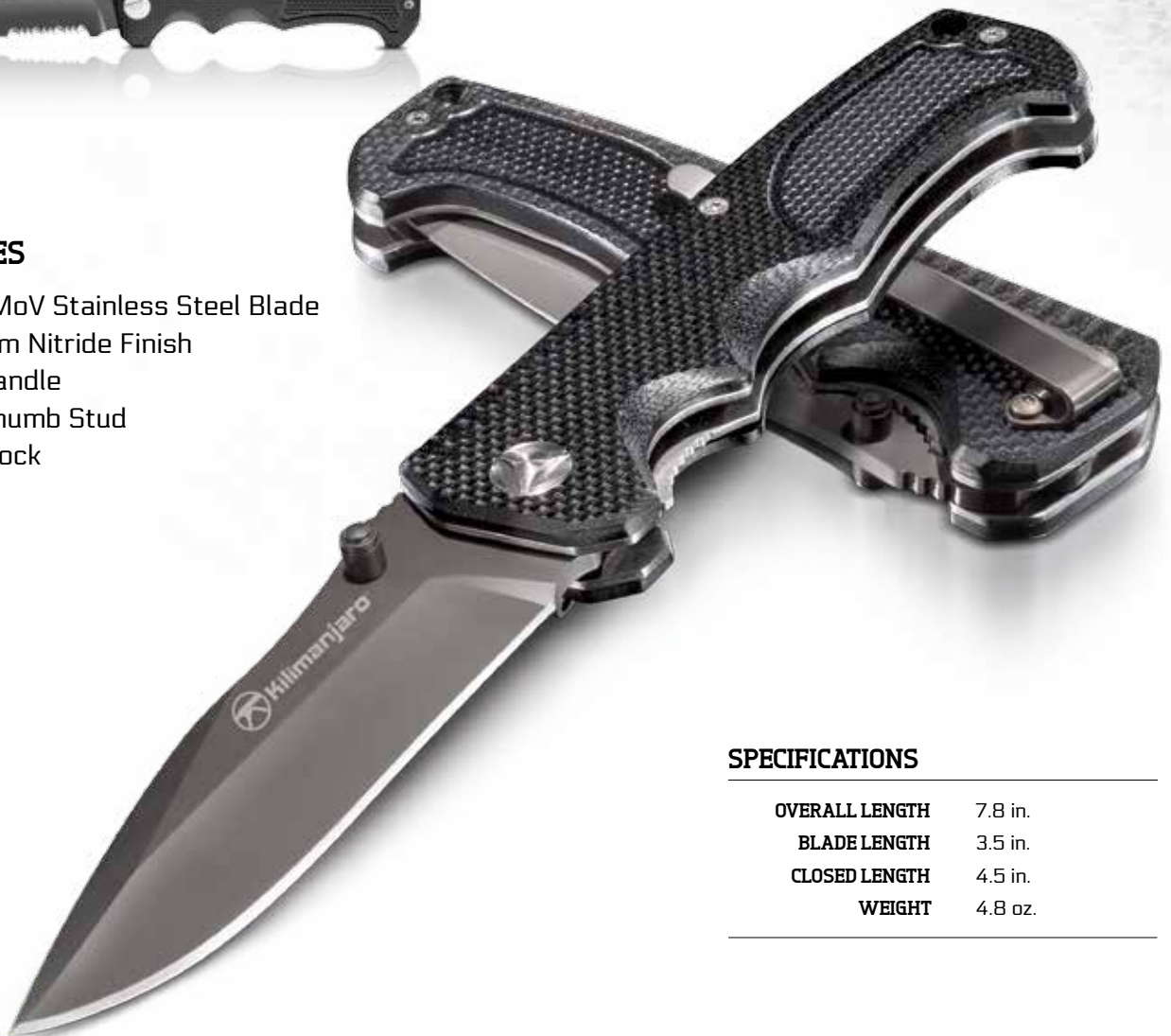


910031 TANTO SERRATED



FEATURES

- 7Cr17MoV Stainless Steel Blade
- Titanium Nitride Finish
- G10 Handle
- Dual Thumb Stud
- Liner Lock



SPECIFICATIONS

OVERALL LENGTH	7.8 in.
BLADE LENGTH	3.5 in.
CLOSED LENGTH	4.5 in.
WEIGHT	4.8 oz.

Caula™

The Caula™ offers a unique lightened handle and stout drop point blade that combine to make it not only durable, but also an easy carry folder. And with two different styles of finish you can pick one that is not only highly functional, but also visually appealing.

910022 DROP POINT / BLACK SATIN



910023 DROP POINT



FEATURES

- 7Cr17MoV Stainless Steel Blade
- G10 Handle
- Dual Thumb Stud
- Liner Lock



SPECIFICATIONS

OVERALL LENGTH	7.7 in.
BLADE LENGTH	3.4 in.
CLOSED LENGTH	4.5 in.
WEIGHT	4 oz.

UTAC™

Rugged folder incorporating a seat belt cutter and carbide glass break keeps you prepared. It pairs a black satin finish blade with two different G10 handle colors. These tactical folders provide heft and versatility alike.



910032 DROP POINT



910033 TANTO



FEATURES

- 7Cr17MoV Stainless Steel Blade
- G10 Handle
- Dual Thumb Stud
- Liner Lock
- Black Satin Finish



SPECIFICATIONS

OVERALL LENGTH	8 in.
BLADE LENGTH	3.5 in.
CLOSED LENGTH	4.7 in.
WEIGHT	5.4 oz.

Vello™

The Vello™ combines an ergonomic design with unique versatility that make this folder more than just a knife. In addition to a high quality stainless steel blade and G10 handle, the Vello features a seat belt cutter, bottle opener, screwdriver and glass break. This knife is also a utility tool when it's needed.



910036 FEATURES

- 8Cr13MoV Stainless Steel Blade
- G10 Handle
- Liner Lock
- Seat Belt Cutter
- Pocket Clip
- Bottle Opener/Screwdriver
- Carbide Glass Break
- Dual Thumb Stud

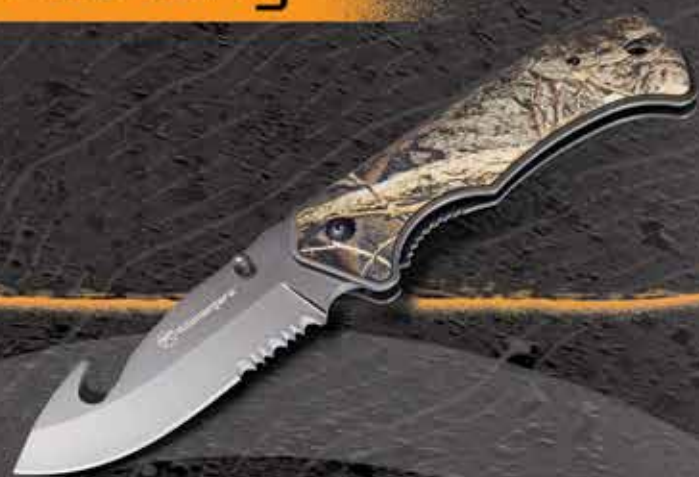


SPECIFICATIONS

OVERALL LENGTH	7.8 in.
BLADE LENGTH	3.1 in.
CLOSED LENGTH	4.6 in.
WEIGHT	5.1 oz.



Hunting





Victus™

The Victus™ family of folding hunting knives is offered in four styles in addition to optional finishes including Kilimanjaro Shelter™ camouflage. Titanium finish and rubberized grips for sure handedness when needed, these knives are designed to perform.

910049 GUT HOOK



910088 GUT HOOK CAMO



FEATURES

- 7Cr17MoV Stainless Steel
- Titanium Nitride Finish
- Dual Thumb Studs
- Liner Lock
- Rubberized Handle
- Nylon Sheath

SPECIFICATIONS

OVERALL LENGTH	8.4 in.
BLADE LENGTH	3.5 in.
CLOSED LENGTH	4.8 in.
WEIGHT	6.1 oz.



910048 DROP POINT



910087 DROP POINT CAMO



FEATURES

- 7Cr17MoV Stainless Steel
- Titanium Nitride Finish
- Dual Thumb Studs
- Liner Lock
- Rubberized Handle
- Nylon Sheath

SPECIFICATIONS

OVERALL LENGTH	8.4 in.
BLADE LENGTH	3.5 in.
CLOSED LENGTH	4.8 in.
WEIGHT	6.2 oz.



910085 DROP POINT



910089 DROP POINT CAMO



FEATURES

- 7Cr17MoV Stainless Steel
- Titanium Nitride Finish
- Dual Thumb Studs
- Liner Lock
- Rubberized Handle
- Pocket Clip

SPECIFICATIONS

OVERALL LENGTH	7.1 in.
BLADE LENGTH	3 in.
CLOSED LENGTH	4.1 in.
WEIGHT	4.3 oz.

910086 POCKET KNIFE



910090 POCKET KNIFE CAMO



FEATURES

- 7Cr17MoV Stainless Steel
- Titanium Nitride Finish
- Nail Nick
- Frame Lock

SPECIFICATIONS

OVERALL LENGTH	6 in.
BLADE LENGTH	2.5 in.
CLOSED LENGTH	3.5 in.
WEIGHT	2.1 oz.



Talbot™

Hunting

The traditional Bowie style blade paired with a green sure grip rubberized handle and paracord lanyard makes these big knives easy to see, easy to hold on to, and even better to use. Complete with a reinforced nylon sheath.



910044 CLIP POINT / COARSE RIGID THUMB RASP



910045 CLIP POINT SERRATED / BACK FILE



FEATURES

- 7Cr17MoV Stainless Steel
- Paracord Lanyard
- Rubberized Handle
- Clip Point Bowie Style Blade
- Nylon Sheath for Storage



SPECIFICATIONS

OVERALL LENGTH	11.2 in.
BLADE LENGTH	5.8 in.
WEIGHT	8.8 oz.

Fishing



Fish Knife Sets

Offered in two levels, these fishing sets include all the essentials needed for any outing packaged in one convenient storage case. From filleting and cutting, to deboning and sharpening up again, these sets are a useful companion for any fisherman.



910063 FEATURES

- 5" Serrated Knife
- 7" Flexible Fillet Knife
- Kitchen Scissors
- Ceramic Sharpener
- Cutting Board



910064 FEATURES

- 5" Flexible Fillet Knife
- 7" Flexible Fillet Knife
- Bone Cutter
- Tungsten Sharpener
- Cutting Board



Multi-Tools





Magnus™

While a traditional multi-tool makes sacrifices to accommodate its various functions, the Magnus makes no such excuses. The patent pending Magnus™ not only features a 4" knife blade, it feels and performs like a knife. Need a pair of pliers? A full size plier head is up to the most demanding tasks. Combined with 8 more everyday tools, there is no other tool like the Magnus.



910056 COMPONENTS

- Long Nose Pliers
- Wire Cutter
- Stripper
- Crimper
- Knife
- Bottle Opener
- Phillips Screwdriver
- Slotted Screwdriver
- Saw Blade
- Single Cut File



PATENT PENDING

SPECIFICATIONS

OVERALL LENGTH	10.4 in.
CLOSED LENGTH	6.4 in.
KNIFE BLADE LENGTH	4 in.
WEIGHT	15.9 oz.
BLADE MATERIAL	Stainless Steel

A compact multi-tool with eight essential components including a knife blade that looks and performs like it should to a carabiner clip for easy carry. The Rappel™ will perform and prove its worth whether out on the trail or out on the job.

910065



910066 BLACK SATIN FINISH



COMPONENTS

- Pliers
- Wire Cutter
- Long Nose Pliers
- Knife
- Bottle Opener
- Phillips Screwdriver
- Flat Head Screwdriver
- Carabiner Clip
- Pocket Clip



SPECIFICATIONS

OVERALL LENGTH	4.8 in.
CLOSED LENGTH	3 in.
WEIGHT	3.7 oz.

Rappel-II™

The full size version in the Rappel™ series, this multi-tool offers a combination of functionality and size. From a quality knife to 10 additional components, the Rappel-II™ makes an ideal sidekick for work or play.

910054 SILVER



910067 BLACK SATIN FINISH



COMPONENTS

- Pliers
- Long Nose Pliers
- Wire Cutter
- Knife
- Saw Blade
- Bottle Opener
- Can Opener
- Phillips Screwdriver
- Medium Flat Head Screwdriver
- Large Flat Head Screwdriver
- File



SPECIFICATIONS

OVERALL LENGTH	6.5 in.
CLOSED LENGTH	4.2 in.
WEIGHT	9.5 oz.

Ballast™

Industrial

With 13 components and a heavy duty design, carrying the Ballast™ practically gives you a toolbox to go. No matter what the problem is, this multi-tool will help you solve it quickly and efficiently.

910053 BLACK SATIN FINISH

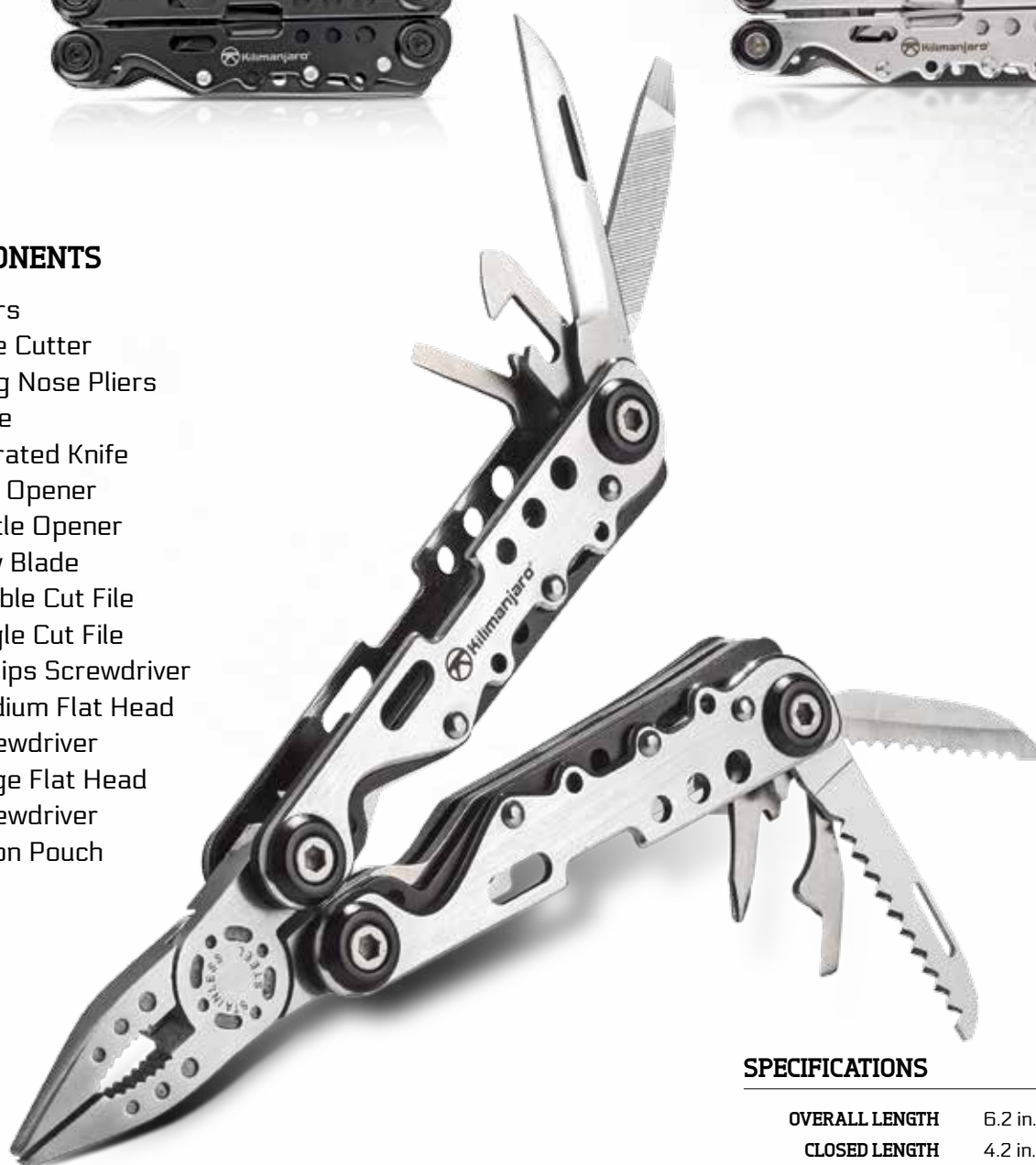


910052



COMPONENTS

- Pliers
- Wire Cutter
- Long Nose Pliers
- Knife
- Serrated Knife
- Can Opener
- Bottle Opener
- Saw Blade
- Double Cut File
- Single Cut File
- Phillips Screwdriver
- Medium Flat Head Screwdriver
- Large Flat Head Screwdriver
- Nylon Pouch



SPECIFICATIONS

OVERALL LENGTH	6.2 in.
CLOSED LENGTH	4.2 in.
WEIGHT	9.5 oz.

Kickstand™

A multi-tool that's useful when you're not even holding it? That's what you have when you combine a multi-tool with a fold out stand. The Kickstand's folding legs and supports make it the perfect resting spot for your smartphone. Whether it's enjoying a video chat in your tent before turning in for the night, to watching instructional videos in the garage, this is one multi-tool that is more useful than ever imagined.



910051 COMPONENTS

- Pliers
- Wire Cutter
- Bottle Opener
- Phillips Screwdriver
- Flat Head Screwdriver
- Fold Out Kickstand



SPECIFICATIONS

OVERALL LENGTH	4.6 in.
CLOSED LENGTH	2.8 in.
WEIGHT	4.2 oz.

Ascend™

Everyday

This keychain multi-tool is compact in size but packed with features. Nine individual components ranging from pliers to tweezers make this a perfect travelling companion – especially since the Ascend™ is also TSA compliant.



910055 COMPONENTS

- Long Nose Pliers
- Wire Stripper
- Bottle Opener
- Scissors
- Slotted Screwdriver
- Phillips Screwdriver
- Single Cut File
- Tweezers
- Keychain



TSA
Compliant
Conforme
Aprobado

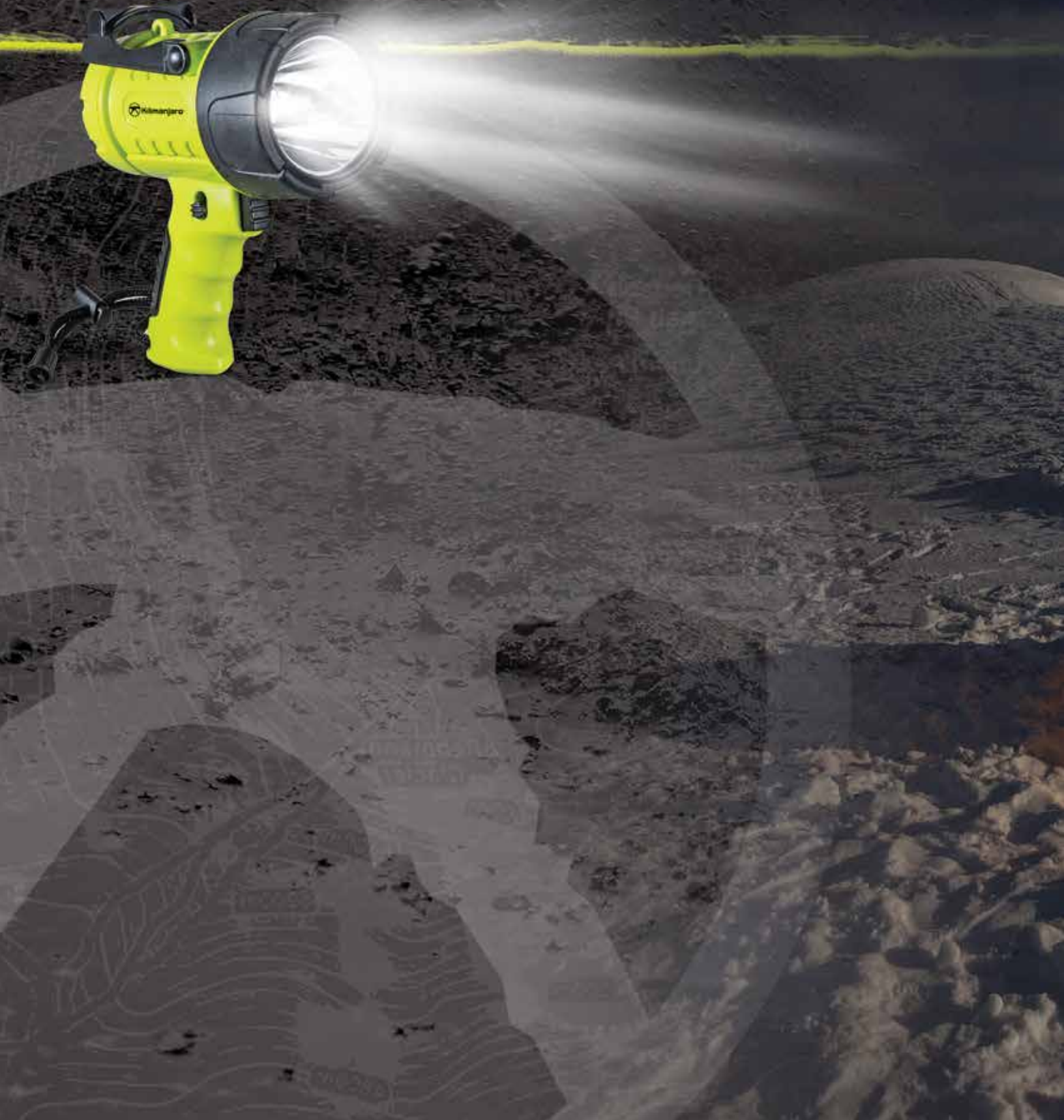


PATENT PENDING

SPECIFICATIONS

OVERALL LENGTH	5.1 in.
CLOSED LENGTH	3 in.
WEIGHT	2.1 oz.

Lighting





LED Stick Light

A lightweight, virtually indestructible light that, once used, quickly becomes everyone's go-to light. Whether it's in your truck, backpack, this is a must-have light that will make you want more than one. Available in both Kilimanjaro™ green and Shelter™ camouflage.

910074 STICK LIGHT



910107 STICK LIGHT CAMOUFLAGE



FEATURES

- 6 High Power LED's
- ABS Body and Shock Proof Polycarbonate Lens
- Molded Pocket Clip
- Water, Impact Resistant Construction
- Batteries Included

PATENT PENDING



SPECIFICATIONS

LUMENS	100
RUNTIME	11 hours
BATTERIES	3 AAA
OVERALL LENGTH	6.2 in.
WEIGHT	2.4 oz. (w / batteries)

LED Extendable Light

The LED Extendable Light offers the versatility of a flashlight and area light in one compact package. Made with the same rugged construction as all other Kilimanjaro lights, this light is not only versatile, but also made to last

910078 FEATURES

- 7 High Power LEDs
- Shock Proof Polycarbonate Lens
- Water, Impact Resistant Construction
- Batteries Included



PATENT PENDING

SPECIFICATIONS

LUMENS	50
RUNTIME	6 hours
BATTERIES	2 AAA
EXTENDED LENGTH	9.3 in.
CLOSED LENGTH	6.2 in.
WEIGHT	3.5 oz. (w / batteries)

LED Swivel Light

This lightweight, powerful and compact area light not only withstands the harshest conditions, it packs easily and includes a recessed hang hook and magnets for incredible versatility. Available in both Kilimanjaro green or in Kilimanjaro Shelter™ camouflage.

910075 SWIVEL LIGHT

910108 SWIVEL LIGHT CAMOUFLAUGE



FEATURES

- Swivel Hang Hook
- Magnetic Handle
- 18 High Power LED's
- Shock Proof Polycarbonate Lens
- Swivels 180 Degrees
- Water, Impact Resistant Construction
- Batteries Included



PATENT PENDING

SPECIFICATIONS

LUMENS	160
RUNTIME	9 hours
BATTERIES	3 AA
OVERALL LENGTH	10.7 in.
FOLDED LENGTH	6.1 in.
WEIGHT	7.4 oz. (w / batteries)

LED Compact Work Light

Don't let the name confuse you: the LED Compact Work Light is a powerhouse. This 250 lumen light integrates a combination stand and hang hook and two individual brightness settings – delivering bright light to any situation. Available in both Kilimanjaro green or in Kilimanjaro Shelter™ camouflage.

910082 LED COMPACT WORK LIGHT



910109 LED COMPACT WORK LIGHT CAMOUFLAGE



FEATURES

- Ultrabright SMD LED's
- Combination Stand and Hang Hook
- 2 Settings: High and Low
- Sealed Lens
- Water, Impact Resistant Construction
- Batteries Included

SPECIFICATIONS

LUMENS	250
RUNTIME	6 hours
BATTERIES	3 AAA
OVERALL LENGTH	4.7 in.
WEIGHT	4 oz. (w / batteries)



LED Carabiner Light

Not just any carabiner design, this powerful LED light features a built-in carabiner handle that not only clips, it swivels, detaches, and includes magnets for providing light in any situation or position.

910076 FEATURES

- Swivel Carabiner Clip
- Hanging Hook
- Shock Proof Polycarbonate Lens
- Water, Impact Resistant Construction
- Magnets
- Batteries Included



PATENT PENDING

SPECIFICATIONS

LUMENS	120
RUNTIME	6 hours
BATTERIES	3 AAA
OVERALL LENGTH	6.2 in.
WEIGHT	4.2 oz. (w / batteries)

LED Roto Lite™

The powerful 200 lumen Roto Lite™ offers a unique design including folding arms that independently rotate up to 360 degrees. And with its swivel hanging hook and magnetic base it can be used in almost any situation. The foldable design means that it packs compactly in any gear bag.



910077 FEATURES

- Dual Arm LED's Independently Adjustable up to 90 degrees
- Arms Independently Rotate 360 degrees
- 32 High Power LED's
- Water Resistant Construction
- Bottom Retractable Swivel Hanging Hook
- Magnetic Base Holds Securely to Metal Surfaces
- Batteries Included



SPECIFICATIONS

LUMENS	200
RUNTIME	9 hours
BATTERIES	3 AA
OVERALL LENGTH	12.3 in.
FOLDED LENGTH	6.7 in.
WEIGHT	9.7 oz. (w / batteries)

LED Tactical Flashlight

This tactical flashlight utilizes a proven aircraft aluminum body and features a Cree® XP-G LED to deliver 250 lumens of powerful light in a small size.

910079 LED TACTICAL FLASHLIGHT



910080 2 PACK



FEATURES

- Cree® XP-G LED
- 3 Modes - Hi/Lo/Strobe
- Aircraft Aluminum Body
- Water Resistant
- Includes Lanyard
- Batteries Included



SPECIFICATIONS

LUMENS	250
RUNTIME	4 hours
BATTERIES	3 AAA
OVERALL LENGTH	4.6 in.
WEIGHT	4.8 oz. [w / batteries]

CREE® and the CREE® logo are registered trademarks of CREE®, Inc.

LED Penlight

Perfect for reading maps, inspecting gear and lighting up work areas, this penlight features a Cree® XP-E LED, matte black aluminum construction and handy pocket clip.

910114 FEATURES

- CREE® XP-E Bulb
- Aluminum Alloy Housing with Pocket Clip
- On/Off Tail Cap Button
- Batteries Included



SPECIFICATIONS

LUMENS	60
RUNTIME	6 hours
BATTERIES	2 AAA
OVERALL LENGTH	5.3 in.
WEIGHT	1.9 oz. (w / batteries)

LED Spotlight

Featuring a Cree® XP-G2 LED producing 250 lumens and a 300M beam distance combined with an IP67 waterproof rating to 1M, this lightweight spotlight is an incredible value in either Kilimanjaro green or Shelter™ camouflage.

910084 LED SPOTLIGHT



910113 LED SPOTLIGHT CAMO



FEATURES

- Waterproof to 1M
- Adjustable Stand
- Magnetic 3 Position Switch
-Hi / Low / SOS
- Rubberized Bezel
- Adjustable Lanyard
- Rubberized Bezel
- Batteries Included

SPECIFICATIONS

LUMENS	250
BEAM DISTANCE	300 m
RUNTIME	4 hours - Hi
BATTERIES	3 AA
WEIGHT	14 oz. (w / batteries)



LED Diffuser Headlamp

The LED Diffuser Headlamp is powerful, with up to 180 lumens of light. It also features a unique sliding diffuser allowing instant change from spot to flood settings. With four modes of brightness and both white and red LEDs combined with IPX4 water resistance, this high quality light will prove its mettle on any trail or expedition.

SLIDING DIFFUSER



910101 FEATURES

- Sliding Diffuser
- White and Red LEDs
- 4 Modes: High, Medium, Low, Flashing
- Swivel Head
- Adjustable Headband

SPECIFICATIONS

LUMENS	180
RUNTIME	7.5 hours - Hi 60 hours - Low
BATTERIES	3 AAA
WATER RESISTANT	IPX4
WEIGHT	100 grams (3.5 oz.) w / batteries



Packs and Bags



Gear you can depend on.

Our new line of packs and bags blend functionality and comfort with rugged good looks.

Designed for the modern day warrior, in the field, on the trail or in the urban jungle.

We stand behind every product with a limited lifetime warranty.





The background image shows two men in tactical gear. One man stands on the left, wearing a black cap, a tactical vest with multiple pouches, and green cargo pants. He is reaching into a large, open wooden crate. The second man is kneeling on the right, also in tactical gear, looking into the crate. The crate is made of light-colored wood and has a yellow and black hazard label on its side. The setting appears to be a warehouse or a storage area with concrete floors and walls.

Tactical

Everything you need to be ready for every mission and operation.

Constructed of rugged, water resistant 600-Denier tactical polyester, self-repairing zippers and reinforced webbing.

An excellent choice for shooting sports, hunting, hiking, camping, security, survival and tactical uses.

Bags

3-Way Modular Deployment Bag

A versatile 3-in-1 bag. Designed for quick access to your personal effects, gear or other small equipment. Has multiple compartments for organizing your gear. Can be easily stored in your vehicle trunk.

910102 BLACK



910103 TAN



FEATURES

- Can Be Used Three Ways: As a Shoulder Bag, with Carry Handle, or as an Attachment to a Modular Pack
- Reinforced "H" Web Grab Handle
- Adjustable Buckled Compression Straps
- Removable Adjustable Nylon Web Shoulder Strap
- Interior Mesh Sleeve Pocket

SPECIFICATIONS

OVERALL DIMENSIONS	17 in. (L) x 8 in. (H) x 7 in. (D) (43 cm x 20 cm x 18 cm)
CAPACITY	707 cu. in. / 12 liters
WEIGHT	1.5 Lbs. / .68 Kg.
MATERIAL	600D Polyester



Concealed Carry Modular Response Bag

Designed to be an operator friendly gear/travel bag. This bag is a great way to get organized for any emergency preparedness situation. Sized to carry the essential equipment you need. Comes with a front side concealment pocket with quick-response hook and loop closure.

910099 BLACK



910100 TAN



FEATURES

- Heavy Duty Webbed Carry Handles
- Removable Padded Shoulder Strap
- Front Hook and Loop Concealment Pocket
- Four Hook and Loop Flap-Covered Pouches
- Interior Mesh Sleeve Pocket

SPECIFICATIONS

OVERALL DIMENSIONS	17 in. (L) x 10 in. (H) x 9 in. (D) (43 cm x 25 cm x 23 cm)
CAPACITY	1085 cu. in. / 18 liters
WEIGHT	2.2 Lbs. / 1.00 Kg.
MATERIAL	600D Polyester



Packs

Transport Modular Assault Pack

This compact accordion style pack is perfect size for when you want to travel light, such as city exploring or a hiking excursion. The water resistant construction keeps your gear dry and secure in any climate. Hydration and laptop compatible.



910097 BLACK



910098 TAN



910111 CAMOUFLAUGE



FEATURES

- Four Unique Storage Areas
- Left and Right Hose Ports with Reinforced Flaps
- Hydration Compatible (Bladder Not Included)
- Heavy Duty Carry Handle
- Fits up to 15 in. (38 cm) Diagonal Laptop Computer
- Hook and Loop Patch for Adding Name Tape or Logo Patches

SPECIFICATIONS

OVERALL DIMENSIONS	9.5 in. (L) x 18 in. (H) x 10 in. (D) [24 cm x 46 cm x 25 cm]
CAPACITY	1086 cu. in. / 18 liters
WEIGHT	2.1 Lbs. / .95 Kg.
MATERIAL	600D Polyester

Operator Modular Assault Pack

A comfortable full-featured pack. Large enough to carry plenty of gear, with a large main compartment and multiple pockets on the sides and rear. Fills multiple roles, from a tactical assault pack to a hunting backpack to an emergency go-bag. The water resistant construction keeps your gear dry and secure in any climate.

910104 BLACK



910105 TAN



910112 CAMOUFLAUGE



FEATURES

- Heavy Duty Carry and Drag Handles
- Hydration Compatible (Bladder Not Included)
- Left and Right Hose/Antenna Ports with Reinforced Flaps
- Top Fleece Lined Sunglass Pocket
- Outer Zippered Map/Document Pocket
- External Adjustable Side Compression Straps

SPECIFICATIONS

OVERALL DIMENSIONS	16 in. (W) x 20 in. (H) x 10 in. (D) [41 cm x 51 cm x 25 cm]
CAPACITY	2440 cu. in. / 40 liters
WEIGHT	3.5 Lbs. / 1.59 Kg.
MATERIAL	600D Polyester



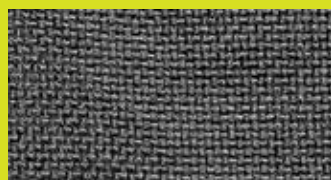
Tactical Elite

Built to exceed military standards, yet civilian friendly. Our new TACTICAL ELITE bags and packs offer outstanding functionality, durability, comfort and performance. Designed for all sorts of outdoor activities and recreational uses. Ideally suited for both work and travel. They will not weigh you down or get in the way when you need to be mission-ready.

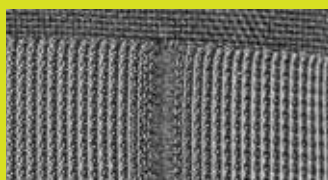
Our bags and packs are constructed from premium 1000-Denier nylon fabric and high-grade waterproofing for maximum durability and weather protection. Comfortable straps and padding provide a steady connection. Durable PALS exterior webbing allows for expansion and organization. Buckles and zippers by DURAFLEX®¹ and YKK®². Reinforced stitching for heavy use and wear resistance.

Our packs and bags are built to last a lifetime. We fully warrant each product to be free of defects in workmanship and materials for as long as you own the product.

Kiligear™ TACTICAL ELITE Material Quality & Workmanship Specifications



- 1000-Denier Water-Repellent and Abrasion Resistant Polyurethane Coated Nylon Fabric



- High Tensile Strength Composite Nylon Thread



- Seams Taped & Finished



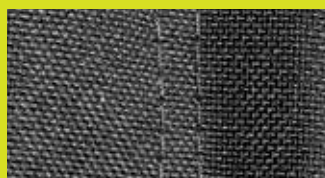
- YKK®² Heavy Duty Zippers & Zipper Tracks



- High Tensile Strength Nylon Webbing



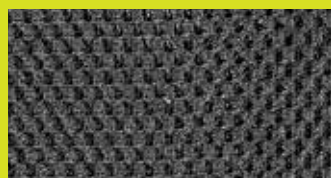
- Bar Tacked or "Box & X" Stitching



- Stress Points Double Stitched



- UTX-DURAFLEX®¹ High Quality Buckles



- Moisture Wicking 3D Mesh Fabric



- Non-Slip Abrasion Resistant Bottom

¹DURAFLEX is a registered trademark of DURAFLEX HONG KONG LIMITED

²YKK is a registered trademark of YKK CORPORATION

Parata™ Travel Duffel Bag

A spacious but compact duffel bag sized for use as an airline friendly carry-on. Features a comfortable, detachable padded shoulder strap and three grab-and-go handles provide multiple carry options. Front and rear compression straps ensure your gear remains stable and secure during transit.

910120 FEATURES

- Detachable and Adjustable Shoulder Strap with Comfortable Mesh Shoulder Pad
- Covered Large Zipper with Lockable Slides, Top Loading Main Compartment
- Reinforced Main Handle with Handle Wrap
- Reinforced Grab-and-Go Handles on Both Ends for Easy Carry
- Front Zipper Pocket Enables Quick Access to Electronics, Keys, Passport and Other Small Items
- Two Front and Two Rear Compression Straps with Quick Release Buckles
- Modular Attachment Webbing on Exterior Front and Sides
- Meets FAA Carry-On Bag Size Requirement

SPECIFICATIONS

OVERALL DIMENSIONS	22 in. (L) x 9 in. (H) x 11 in. (D) (56 cm x 23 cm x 28 cm)
CAPACITY	2178 cu. in. / 36 liters
WEIGHT	2.0 Lbs. / .95 Kg.
MATERIAL	1000-Denier Textured Nylon Fabric



Tectus™ Tactical Briefcase Conceal Carry Bag

Tectus™ is Latin for concealed or hidden and a fitting name for this multifunctional carryall. It makes the perfect briefcase, range bag, gear bag or day pack. Tough enough to support civilian travel, work or tactical operations. Features a fully padded main compartment, rear administrative panel and front concealment compartment.

910122 FEATURES

- Fully Padded Main Compartment With Removable Hook and Loop Interior Divider
- Fits Up to 15.4 in. (34 cm) Diagonal Laptop Computer
- Detachable/Adjustable Padded Shoulder Strap
- Dual Grab Handles
- Four Exterior Hook and Loop Flap-Covered Pockets
- Three Exterior Zippered Pockets for Small Gear Storage
- Hook and Loop Concealment Pocket with Internal Loop Field
- Zippered File and Organizer Compartment
- Water Bottle Pouch with Hook and Loop Flap
- Exterior Loop Field for Patches or ID
- Exterior Zippered Deep Slip Map/Document Pocket

SPECIFICATIONS

OVERALL DIMENSIONS	20 in. (L) x 13 in. (H) x 8 in. (D) (51 cm x 33 cm x 20 cm)
CAPACITY	1352 cu. in. / 22 liters
WEIGHT	3.3 Lbs. / 1.50 Kg.
MATERIAL	1000-Denier Textured Nylon Fabric



Mirati™ Backpack

A compact, well sized multipurpose day-backpack. Ideally suited for use as a carry-on, patrol bag, hunting backpack or hiking pack. Dual main compartments for stowing gear you may need in a hurry. Additional features include an internal administrative panel, hydration/concealment zippered pocket and outer webbing straps for modular attachments.



910124 FEATURES

- Dual Main Compartments
- External Hose Port
- Reinforced Grab Handle
- Hydration Compatible (Bladder Not Included)
- Fits up to 15.4 in. (38 cm) Diagonal Laptop Computer
- Hook and Loop Patch for Adding Name Tape or Logo Patches
- External Adjustable Side Compression Straps
- Removable/Adjustable Sternum and Waist Straps
- Zippered Internal Organization Pouch to Store Pens, Maps and Documents
- Padded Mesh Back Panel for Enhanced Moisture Wicking
- PALS Webbing for Modular Pouch Attachments
- Front Elastic Cords to Hold Jacket or Extra Clothes

SPECIFICATIONS

OVERALL DIMENSIONS	13 in. (L) x 18 in. (H) x 11 in. (D) (33 cm x 46 cm x 28 cm)
CAPACITY	1577 cu. in. / 26 liters
WEIGHT	3.1 Lbs. / 1.41 Kg.
MATERIAL	1000-Denier Textured Nylon Fabric



Contego™ Backpack

Designed for hauling plenty of gear. This pack is big enough to carry several days worth of supplies on a short mission, yet small enough not to limit your mobility on longer hikes. The result is a comfortable, feature-rich pack with superior storage capacity and organization. Featuring one large compartment, one medium administrative compartment and multiple side pockets.

910126 FEATURES

- Large Main Compartment
- Zippered Fleece Lined Eyewear Pocket
- Reinforced Grab Handle with Dual Hose Ports
- Hydration Compatible (Bladder Not Included)
- Hook and Loop Patch for Adding Name Tape or Logo Patches
- External Adjustable Side Compression Straps
- Removable/Adjustable Sternum and Waist Straps
- Zippered Internal Organization Pouch to Store Pens, Maps and Documents
- Padded Mesh Back Panel for Enhanced Moisture Wicking
- PALS Webbing for Modular Pouch Attachments
- Front Elastic Cords to Hold Jacket or Extra Clothes
- Grommet Drainage Ports

SPECIFICATIONS

OVERALL DIMENSIONS	21 in. (L) x 19 in. (H) x 10 in. (D) (53 cm x 48 cm x 25 cm)
CAPACITY	2084 cu. in. / 34 liters
WEIGHT	3.7 Lbs. / 1.68 Kg.
MATERIAL	1000-Denier Textured Nylon Fabric





KILIGEAR™ LIMITED LIFETIME WARRANTY

Express and Exclusive Limited Warranty to Original Retail Buyer

KILIGEAR™ products are backed by a limited lifetime warranty to the original retail purchaser and are guaranteed to be free from defects in materials and workmanship for as long as owned by the original purchaser and is used for the purpose intended, under normal conditions, or for the maximum period allowed by the laws of your jurisdiction, if less.

Exclusions for Coverage

Excluded from coverage under this warranty are the following:

- Damage resulting from abuse or misuse.
- Damage resulting from extended wear and tear.
- Damage resulting from the natural breakdown of colors and materials.
- Damage resulting from tampering or a customer modification.
- Damage resulting from exposure to a caustic substance.

Products covered under our warranty will be repaired or replaced at our discretion, free of charge. In the event that the style being returned is no longer available for exchange, a product of equal value may be substituted. Proof of purchase (original sales receipt) must be provided with all warranty claims.

The original purchaser may return the Product, freight prepaid, together with a purchase receipt or other appropriate proof of purchase to 1431 W. Via Plata Street, Long Beach, CA 90810-1462.

KILIGEAR shall not be liable for any special, incidental, or consequential damages or breach of implied warranty on this Product, including any damage to person or property, whenever the law allows.

This warranty is the exclusive warranty provided by KILIGEAR relating to the Product and, to the maximum extent permitted by law.

Some states/provinces do not allow limitations of how long an implied warranty lasts or the exclusion or limitation of such damages, so these limitations and exclusions may not apply to you. This warranty gives the consumer specific legal rights. You may also have other rights that vary from state/province to state/province.

KILIMANJARO® LIFETIME WARRANTY

Kilimanjaro® products are backed by a limited lifetime warranty to the original retail purchaser and are guaranteed to be free from defects in materials and workmanship for as long as owned by the original purchaser and is used for the purpose intended, under normal conditions, or for the maximum period allowed by the laws of your jurisdiction, if less.

Knives & Multi-Tools

Knives and Multi-Tools covered under our warranty will be repaired or replaced at our discretion, free of charge. In the event that the style being returned is no longer available for exchange, a product of equal value may be substituted.

Use of a knife for any purpose other than cutting is considered abuse and is not covered under warranty. This warranty shall not apply when a knife or multi-tool has been tampered with or modified, improperly sharpened, when repairs or attempted repairs have been made by unauthorized persons, or where the Product has been subjected to misuse, abuse, accident or damage in transit. No charges will be accepted for unauthorized parts, repairs or services.

Exclusions for Coverage

Excluded from coverage under this warranty are the following:

Damage resulting from abuse or misuse.

Damage resulting from extended wear and tear.

Damage resulting from improper use of a blade such as prying or pounding

Damage resulting from tampering or a customer modification.

Damage resulting from exposure to a caustic substance, including rust.

Lights

Lights covered under our warranty will be repaired or replaced at our discretion, free of charge. In the event that the style being returned is no longer available for exchange, a product of equal value may be substituted. This warranty does not cover batteries or charging accessories, nor does it cover damage caused by battery leakage.

Exclusions for Coverage

Excluded from coverage under this warranty are the following:

Damage resulting from abuse or misuse.

Damage resulting from extended wear and tear.

Damage resulting from tampering or a customer modification.

Damage to batteries or charging accessories.

Damage caused by batteries that leak or are improperly installed.

Proof of purchase (original sales receipt) must be provided with all warranty claims.

The original purchaser may return the Product, freight prepaid, together with a purchase receipt or other appropriate proof of purchase to 1431 W. Via Plata Street, Long Beach, CA 90810-1462. When shipping knives or multi-tools, use of a shipping box is recommended.

Kilimanjaro shall not be liable for any special, incidental, or consequential damages or breach of implied warranty on this Product, including any damage to person or property, whenever the law allows.

This warranty is the exclusive warranty provided by Kilimanjaro relating to the Product and, to the maximum extent permitted by law.

Some states/provinces do not allow limitations of how long an implied warranty lasts or the exclusion or limitation of such damages, so these limitations and exclusions may not apply to you. This warranty gives the consumer specific legal rights. You may also have other rights that vary from state/province to state/province.



Kilimanjaro®

Explore... Adventure... Live...



www.KilimanjaroGear.com
1-800-522-0847



1431 Via Plata
Long Beach, CA 90810-1462 USA
©2014 Alltrade Tools LLC