



SAFE CLEAN WATER PROGRAM

Lower San Gabriel
River Watershed

May 10, 2022
Update



SAFE
CLEAN
WATER

PRESENTED BY:

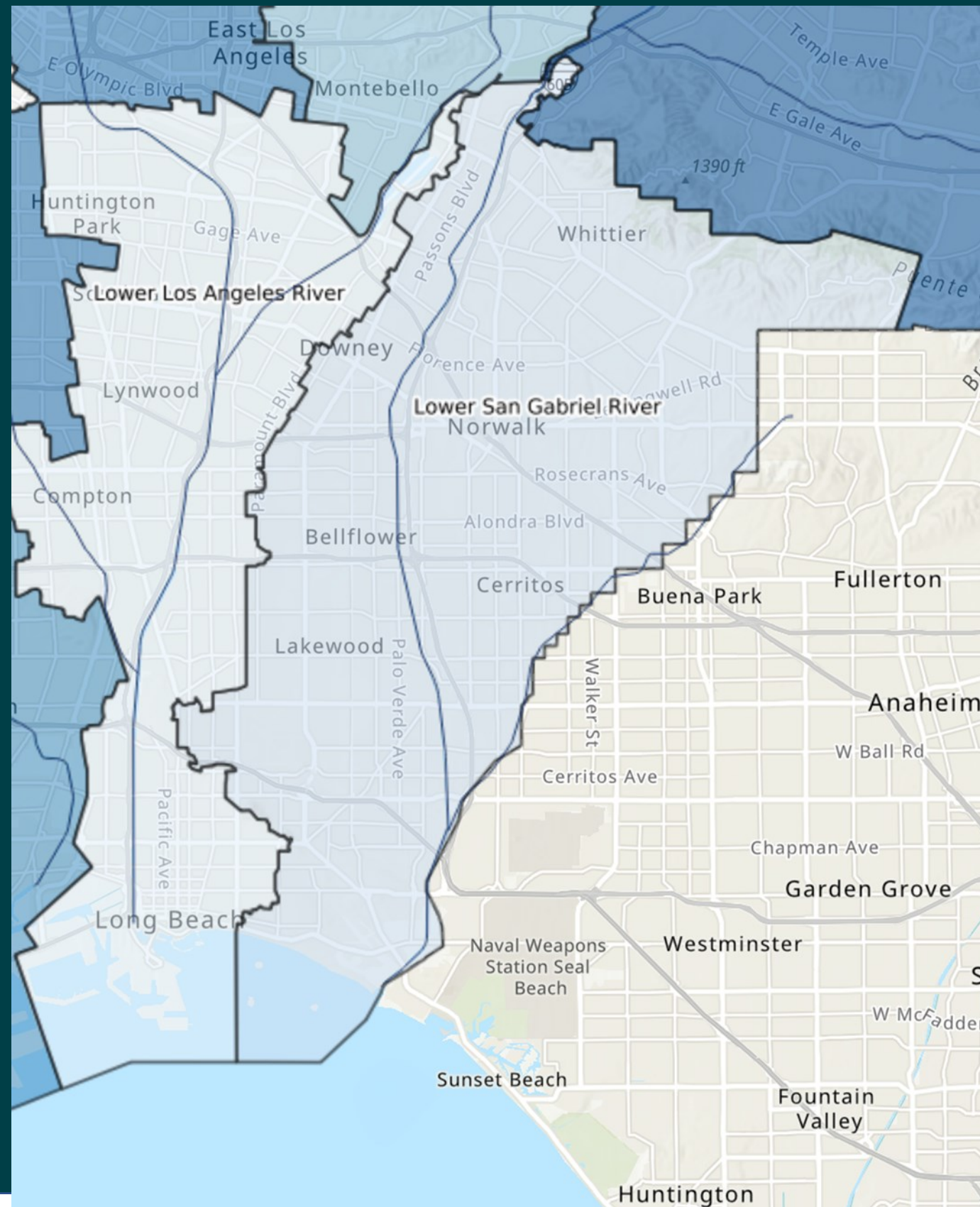
OhanaVets, Inc.
Lower San Gabriel River
Watershed Coordinator



LSGR – Watershed & Member Agencies

The Lower San Gabriel River “LSGR” Watershed Area represents the lower portion of the San Gabriel River starting at Whittier Narrows. It extends 20 miles ending at the Pacific Ocean.

LSGR is in the Gateway Region of Los Angeles County and includes 15 cities and unincorporated LA County in whole or in part.



- **Artesia**
- **Bellflower**
- **Cerritos**
- **Downey**
- **Hawaiian Gardens**
- **La Habra Heights**
- **La Mirada**
- **Lakewood**
- **Long Beach**
- **Norwalk**
- **Paramount**
- **Pico Rivera**
- **Santa Fe Springs**
- **Signal Hill**
- **Whittier**
- **Unincorporated LA County**

LSGR UPDATE



GENERAL ACTIVITIES

**DRAFT 2022 STRATEGIC OUTREACH
AND ENGAGEMENT PLAN “SOEP”**

Draft SOEP Workshop for Stakeholders

May 3, 2022



2022 STRATEGIC OUTREACH AND ENGAGEMENT PLAN
 Prepared for:
 LOWER SAN GABRIEL RIVER WATERSHED AREA STEERING COMMITTEE

DRAFT

Prepared by:
 OhanaVETS, Inc.
 1140 Pacific Street, Suite 2
 San Jose, CA 95128

SAFE CLEAN WATER PROGRAM

FREE VIRTUAL WORKSHOP - LOWER SAN GABRIEL RIVER WATERSHED AREA

We are pleased to present the Draft 2022 Strategic Outreach and Engagement Plan to our stakeholders! This workshop will include a brief overview of the Safe Clean Water Program for LA County, our role as your watershed coordinator team, and more specifically, the activities planned for the Lower San Gabriel River Watershed Area. We look forward to seeing you virtually on May 3rd at 3:30 p.m.!

[Register Here](#)



City of Downey
TOUCH-A-TRUCK
 SEE | TOUCH | EXPLORE | HONK

Emergency Rescue Demonstrations, Public Works Trucks, Police Patrol Vehicles, K-9 Unit, fire engines, construction equipment and more!

Saturday, May 7, 2022
10:00AM - 1:00PM
 INDEPENDENCE PARK
 12334 Bellflower Blvd

10-11am: Quiet hour no sirens, horns or lights for those with sensitive ears or eyes
 11am: Vehicle Extraction Demo
 12pm: Vehicle Fire Demo

The City of Downey prohibits discrimination of any person in any of its program and services. For accommodation requests, contact the City's ADA Coordinator at least 48 hours prior to the event/service/program at (562) 299-6619 or ADACoordinator@downeyca.org. TTY 711.

Educational Outreach at Downey "Touch a Truck"


May 7, 2022

SAFE CLEAN WATER

LSGR – Watershed & Member Agencies

The Lower San Gabriel River "LSGR" Watershed Area represents the lower portion of the San Gabriel River starting at Whittier Narrows. It extends 20 miles ending at the Pacific Ocean.

LSGR is in the Gateway Region of Los Angeles County and includes 15 cities and unincorporated LA County in whole or in part.



- Artesia
- Bellflower
- Cerritos
- Downey
- Hawaiian Gardens
- La Habra Heights
- La Mirada
- Lakewood
- Long Beach
- Norwalk
- Paramount
- Pico Rivera
- Santa Fe Springs
- Signal Hill
- Whittier
- Unincorporated LA County

OhanaVETS

Clean Water Vision

Get Involved! Share your ideas with us!

Sign up for Lower San Gabriel River Watershed Area Information and Events!

Visit us at:
cleanwatervision.com

Email us at:
lsg@ohanavets.com

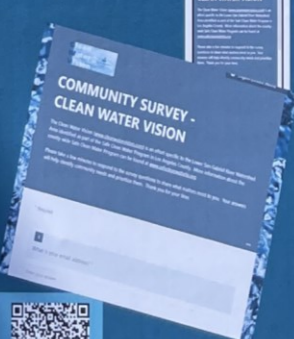
Follow us on social media!
[@lsgwatershed](https://twitter.com/lsgwatershed)

Community Outreach Ideas?
Project Ideas?
Partnership Ideas?




TAKE OUR 2 MINUTE COMMUNITY NEEDS SURVEY

What water issues concern you the most?
What does your community need more of?
What outdoor areas need improvement?



LSGR Watershed Area Community Survey

www.cleanwatervision.com










LSGR WASC WC – General Activities

WaterTalks (DACIP) Workshop - May 18

WATER talks **Workshop Series**
FOR AGENCIES & ELECTEDS

WaterTalks for Agencies & Electeds is a no-cost workshop series designed to strengthen integrated watershed management across LA County and equip local leaders with the tools and resources needed to address water-related challenges.

Workshop #1
Register to Join Us on Zoom
May 5th, 16th or 18th!

In Workshop 1, participants will learn about the systems thinking approach to water and land-use planning in relation to the Integrated Regional Water Management and Safe Clean Water Programs. Attendees will hear from local government representatives about how these programs have benefitted their constituents and how communities, especially those facing ongoing economic and environmental distress, can be engaged. **Workshop 1 is offered for each region.**

Who should attend?

- Local elected officials and commissioners
- City and County managers and staff
- Special districts, water districts, and school district staff
- Other civic leaders involved in water and land-use planning

REGISTER & LEARN MORE
watershedhealth.org/watertalks

Note that although attendees are encouraged to register for workshops specific to their watershed region, all are invited and welcome to register for any date and time that best fits their schedule.

Program Overview...

- 1 Workshop: Integrated Watershed Management** (May)
- 2 Workshop: Community Engaged Planning** (June)
- 3 Workshop: Water Training: Allyship with Tribal Communities** (Ongoing)
- 4 Site Visit: Community Water Tours** (August)

The Workshop Series will be hosted from May through August and will feature:

- Panels and presentations by local, distinguished water-leaders ([click here for more information about the speakers!](#))
- Watershed-specific workshops and discussions
- Peer-to-peer learning opportunities
- In-person tours of exemplary water project sites in each watershed area

Events will be hosted in four watershed areas:
1) South Bay 2) Upper Los Angeles River
3) Upper San Gabriel River & Rio Hondo
4) Lower Los Angeles & San Gabriel Rivers

SCHOOLS & STORMWATER SYMPOSIUM:
A MULTI-BENEFIT OPPORTUNITY

Presented in collaboration with LA County Watershed Health, Day One, Heal the Bay, TreePeople, and Melina Sempill Watts Consulting, LLC

JOIN US!
May 19th, 2022
9AM - Noon PST

Council for Watershed Health is pleased to invite you to the upcoming 1-day Schools & Stormwater Symposium. This exciting event is hosted in partnership with [Watershed Coordinators](#) for LA County's [Safe Clean Water Program!](#)

Schools and Stormwater Symposium: A Multi-Benefit Opportunity
May 19th, 2022, Virtual on Zoom
9 AM-Noon PST

This Important event will convene various water agencies, schools districts, administrators and staff, parent groups, and community-based organizations, among other experts, to spotlight the unique opportunities that schools hold to be sites for greening and stormwater capture projects.

Expert panelists will engage in insightful conversations covering three main topics:

- Highlight the multiple benefits of school stormwater and greening projects for students, their families, and the surrounding neighborhood community
- Describe specific case studies of impactful school-site projects with a special focus on how to locate, design, and implement projects by securing Measure W and Safe Clean Water Program funds
- Address liability considerations and how to overcome contractual barriers to implementing stormwater capture projects on school campuses

This is a no-cost event, open and available for all. Please spread the word and we hope to see you there!

REGISTER HERE

Schools and Stormwater Symposium – May 19

2022 - LSGR SOEP Schedule

- Active/Current 2021 - LSGR SOEP
- Overview of 2022 – LSGR SOEP at WASC Meeting (April 12, 2022)
- Draft 2022 – LSGR SOEP to WASC Members (April 13, 2022)
- WASC Member Review/Comment Period (April 13-29, 2022)
- Stakeholder Workshop on Draft 2022 – LSGR SOEP (May 3, 2022)
- WASC / Public Comments on 2022 – LSGR SOEP (May 10, 2022)
- Approve 2022 – LSGR SOEP

SOEP – FY 2022 Draft Overview

2022 STRATEGIC OUTREACH AND ENGAGEMENT PLAN

Prepared for:

**LOWER SAN GABRIEL RIVER
WATERSHED AREA STEERING COMMITTEE**



Prepared by:

OhanaVets, Inc.
1040 Pacific Street, Suite E
San Luis Obispo, CA 93401
(805) 285-5330



Lower San Gabriel River
Strategic Outreach and Engagement Plan

Table of Contents

1. Background.....	1
2. Introduction.....	2
3. Watershed Area Description.....	5
Physical Characteristics.....	5
Social Characteristics.....	6
SCWP Context.....	7
4. Interested Party Mapping.....	8
5. Vision for Success & Evaluation.....	12
Vision Statement.....	12
Mission.....	12
Goals.....	13
Evaluation.....	14
6. Strategies.....	15
Engage Stakeholders, Municipalities, and Community Groups.....	15
Solicit Input, Connect to Technical Assistance “TA” Opportunities.....	18
Ensure Diverse Perspectives are Shared with District/WASCS.....	20
Identify and Ensure Involvement of Members of Disadvantaged and Under-Represented Communities.....	21
Identify Educational Programming About Watershed Management, Ecological and Community Issues.....	22
7. Identify Collaborative Efforts.....	24
Attachment A – Contact List.....	A
Attachment B – LSGR Region – Languages Spoken.....	B
Attachment C – Project Fact Sheet Template.....	C
Attachment D – LSGR Project Mapping.....	D



2022 DRAFT SOEP UPDATES MADE MAINLY TO:



Section 4: Interested Party Mapping – updated WASC Members and Interviews, and Interested Parties Listings



Section 6: Strategies – updated strategic tools and general strategies to reflect what was learned in the first year and how to apply tools in the coming year.



Attachment A – Contact List



Attachment C – LSGR Project Mapping (new)



Attachment D – Project Fact Sheet Template (new)

SOEP – FY 2022 Draft Overview

Table 4.1 – LSGR WASC Member Interviews with Watershed Coordinators as of April 13, 2022

Member Type	Member	Affiliation	Alternate	Alt-Affiliation	Interview Status
Agency	Julian Juarez	LACFCD	Ramy Gindi	LACFCD	4/05/22
Agency	Alex Rojas	CBI/MWD	N/A	CBI/MWD	Pending
Agency	Rob Beste	WRDSC	Aimee Zhao	WRDSC	4/06/22
Agency	Kristen Ruffell	LAC Sanitation	Dr. Quynh Tran	LAC Sanitation	3/25/22
Agency	Stephen Scott	Long Beach Parks/Rec/Marine	Nancy Villaseñor	Long Beach Parks/Rec/Marine	3/28/22
Community Stakeholder	Dan Knapp	Conservation Corps of Long Beach	Irene Lopez-Muro	Conservation Corps of Long Beach	3/31/22
Community Stakeholder	Adam Galia	Resident	N/A		3/25/22
Community Stakeholder	Mark Stanley	RMC	Joseph Gonzalez	RMC	4/13/22
Community Stakeholder	Gabrielle Weeks	Long Beach Coalition for a Safe Environment	N/A		3/31/22
Municipal Members	Mike O'Grady	Cerritos			Pending
Municipal Members	Delfino Consunji	Downey	Dan Mueller	Downey	4/01/22
Municipal Members	Lisa Ann Rapp	Lakewood	Konya Vivanti	Lakewood	4/07/22
Municipal Members	Melissa You	Long Beach	Wataru Kumagai	Long Beach	4/06/22
Municipal Members	Bernie Iniguez	City of Bellflower	Glen Kau	City of Norwalk	3/25/22
Municipal Members	Marlin Muñoz	La Mirada	N/A		4/04/22
Municipal Members	Vicki Smith	Whittier	Kyle Cason	Whittier	4/01/22

The results of the first year's conversations with WASC members identified the following potential interested parties:

- Amigos de los Rios
- Friends of the San Gabriel River
- Los Cerritos Wetlands Stewardship
- Los Cerritos Wetlands Authority
- Los Cerritos Wetlands Land Trust
- Los Angeles Neighborhood Initiative
- River in Action
- LA County Bike Coalition
- California State University Long Beach
- Cerritos College
- California Greenworks
- Watershed Council of Health
- Tree People
- Long Beach Conservation Corps
- Heal the Bay
- Campfire LA
- Central Basin MWD Purveyors Monthly Workshop
- Korean Community Services
- Gateway Water Management Authority
- Gateway Cities Council of Governments
- ABC Unified School District and Campuses
- Chambers of Commerce Service Clubs
- Water Education for Latino Leaders "WELL"
- Watershed Conservation Authority (WCA)
- Downey School District

PASSED AS 'MEASURE W' IN 2018

CAPTURE IT

Increase water supply

CLEAN IT

Reduce volume of trash that reaches waterways and the ocean

MAKE IT SAFE

Eliminate toxins and chemicals from our waterways

MAKE IT FOR EVERYONE

Provide community benefits

VISION:

By modernizing our 100-year-old water system, we can better protect public health and our environment, and maximize a cleaner, locally controlled water supply.

HOW?

Through the funding of:

multi-benefit
stormwater &
urban runoff capture
projects

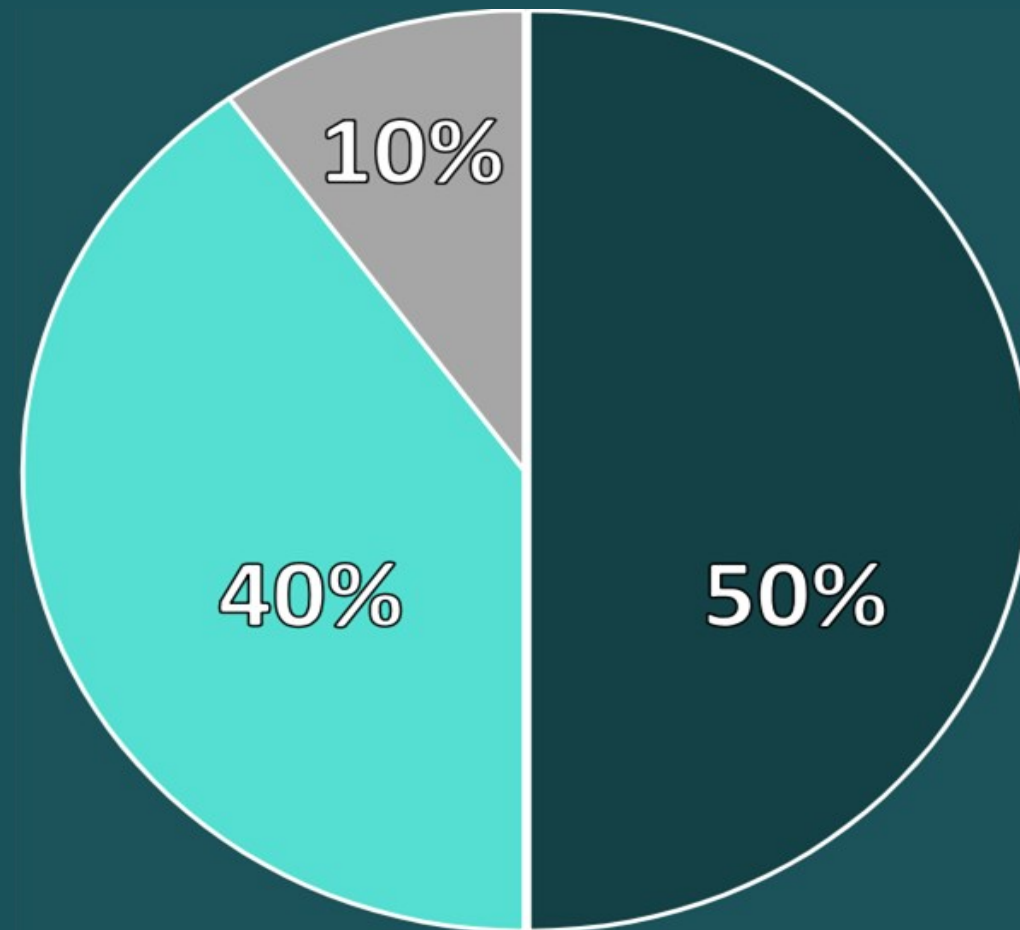
WHO?



SOURCE OF FUNDING:

Revenue is generated from a special parcel tax.

2.5 cents per square foot of impermeable surface area properties
in the LA County Flood Control District.



Regional Program

(50% ~ \$142.5M annually)

Municipal Program

(40% ~ \$114M annually)

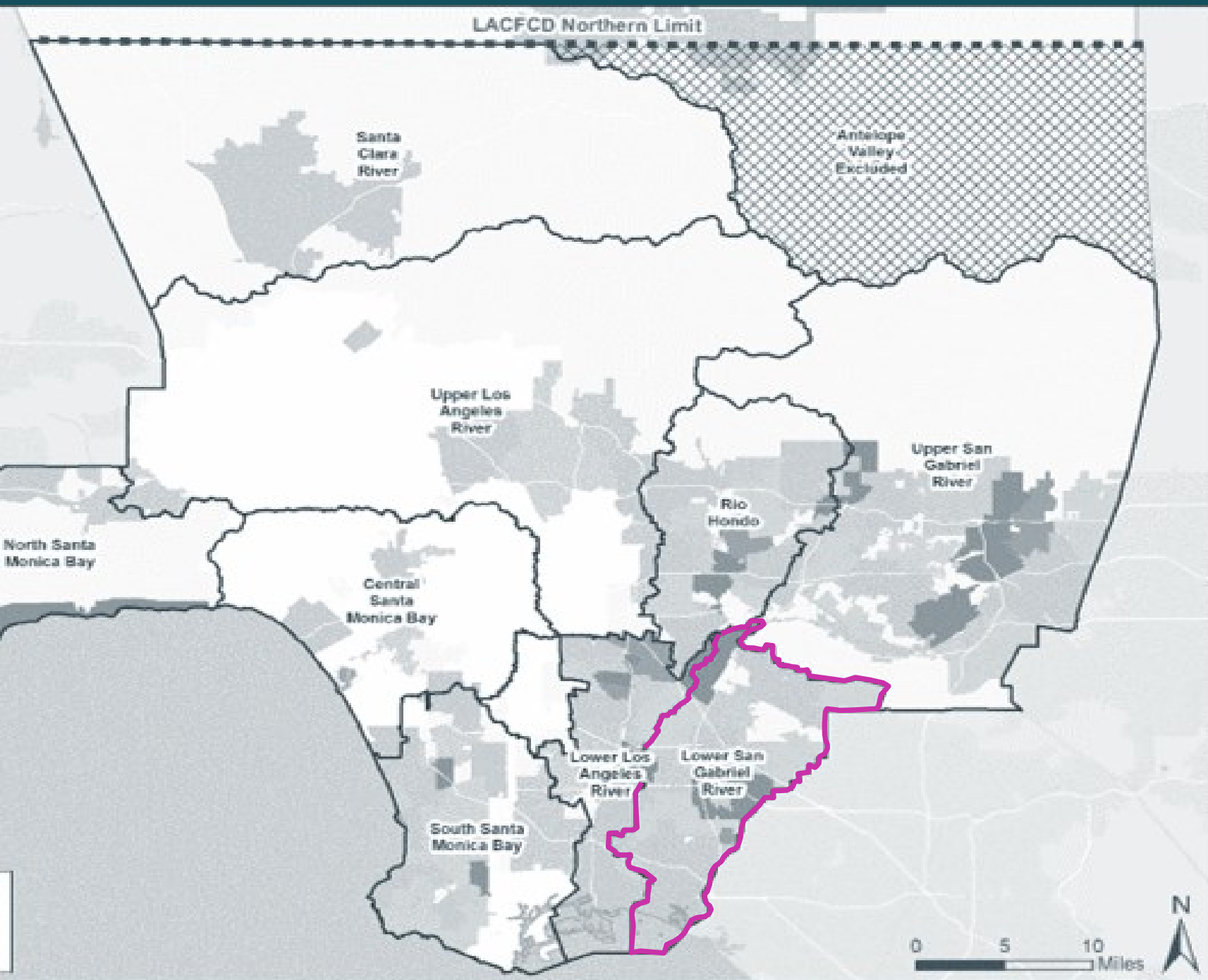
District Program

(10% ~ \$28.5M annually)

Total Program: Approx. \$285M annually

REGIONAL PROGRAM ANNUAL FUNDING DISTRIBUTION

The percentage of funds received by each Watershed Area is proportional to the tax revenues collected within its boundaries



WATERSHED NAME	2020-21 REGIONAL TAX RETURN ESTIMATES
Central Santa Monica Bay	\$17.42M
Lower Los Angeles River	\$12.72M
Lower San Gabriel River	\$16.56M
North Santa Monica Bay	\$1.83M
Rio Hondo	\$11.49M
Santa Clara River	\$5.87M
South Santa Monica Bay	\$17.58M
Upper Los Angeles River	\$38.44M
Upper San Gabriel River	\$18.78M
ANNUAL REGIONAL TOTAL:	\$140.6M



SCWP Ordinance – Regional Program Highlights

“Shall be programmed, to the extent feasible, such that **each Municipality receives benefits in proportion to the funds generated** within their jurisdiction..”

“Shall be allocated such that funding for Projects that provide **a DAC Benefit is not less than one hundred ten percent (110%) of the ratio of the DAC population** to the total population in each Watershed Area;”

“Shall be programmed, to the extent feasible, such that **a spectrum of project types and sizes are implemented** throughout the region;”

“Shall be programmed, to the extent feasible, such that **Nature-Based Solutions are prioritized;**”

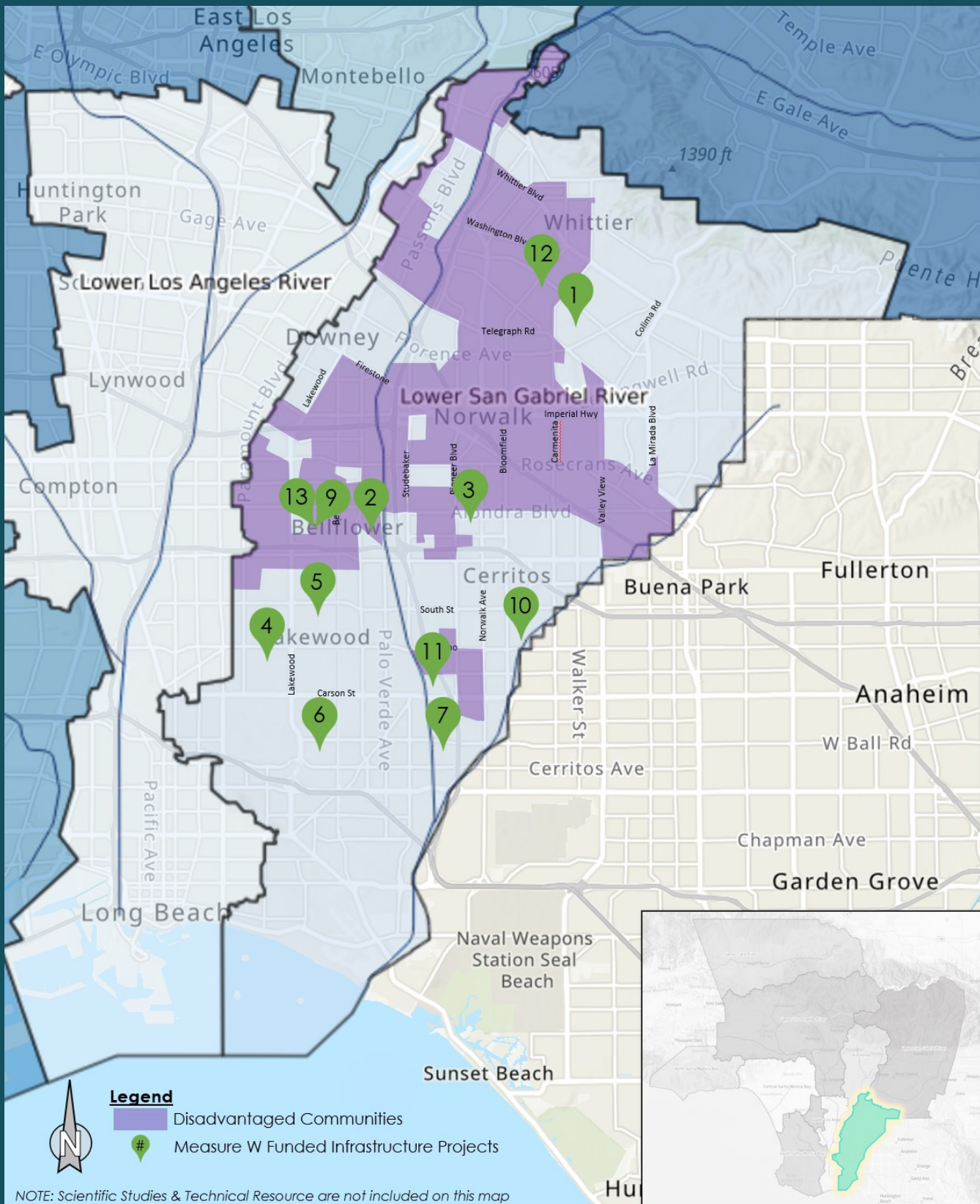
“Shall be disbursed to a non-municipal Infrastructure Program Project Applicant only after the Infrastructure Program **Project Applicant has secured a letter of support from the Municipality** in which the Project is located;”

“Shall be prioritized and spent on Projects that, to the extent feasible, **assist in achieving compliance with [MS4 Permit]...**”

SOEP – ATTACHMENT “C”

LSGR Project Mapping

SGR – SCWP PROJECTS FUNDED AND UNDER CONSIDERATION



Project Name	BMP Type	Planning/Design	Construction	O&M	Technical Resource/ Scientific Study	Capital Cost	Cost Share	Measure W Funding	SIP Year	Project Developer
		\$M	\$M	\$M	\$M	\$M	\$M	\$M		
1 Adventure Park Multi-Benefit Stormwater Capture	D		\$ 13.5			\$ 28.5	\$ 15.0	\$ 13.5	20-21	Unincorp. County Area of Whittier
2 Caruthers Park	I			\$ 0.9			\$ 13.0	\$ 0.9	20-21	Bellflower
3 Hermosillo Park	I	\$ 4.1	\$ 16.0			\$ 20.1		\$ 20.1	20-21	Norwalk
4 Bolivar Park	I			\$ 1.3		\$ 11.0	\$ 11.0	\$ 1.3	20-21	Lakewood
5 Mayfair Park	T			\$ 1.3		\$ 14.4	\$ 15.0	\$ 1.3	20-21	Lakewood
6 Skylinks Golf Course at Wardlow Stormwater Capture Project	T	\$ 2.7	\$ 7.8			\$ 10.5		\$ 10.4	20-21	Long Beach
7 El Dorado Regional Project	T	\$ 3.0				\$ 11.8	\$ 0.1	\$ 3.0	20-21	Long Beach
8 Watershed Coordinator	TR				\$ 1.0			\$ 1.0	20-21	LACFCD
9 Bellflower Simms Park Stormwater Capture	T	\$ 2.1				\$ 18.7	\$ 5.6	\$ 2.1	21-22	Bellflower
10 Cerritos Sports Complex	T	\$ 2.4				\$ 26.2		\$ 2.4	21-22	Cerritos
11 Lakewood Equestrian Center	T	\$ 1.1					\$ 0.4	\$ 1.1	22-23	Lakewood
12 York Field Stormwater Capture	I	\$ 1.9					\$ 0.6	\$ 1.9	22-23	Whittier
13 Bellflower Simms Park Stormwater Capture	T		\$ 15.7				\$ 0.9	\$ 15.7	22-23	Bellflower
14 Gateway Area Path Finding Analysis	SS				\$ 0.1			\$ 0.1	21-22	GWMA
15 Sorensen Park Multi-Benefit	SS				\$ 0.3			\$ 0.3	21-22	LA County PW
16 Gateway Area Path Finding Analysis Ph 2	SS				\$ 0.2			\$ 0.2	22-23	GWMA
17 Microplastics in LA County Stormwater	SS				\$ 0.2		\$ 0.1	\$ 0.2	22-23	Dr. A Gray, UC Riverside
Funded Total		\$ 17.3	\$ 52.9	\$ 3.4	\$ 1.9	\$ 141.2	\$ 61.7	\$ 75.5		

BMP Type Legend: D= Diversion to Sanitary Sewer; I = Infiltration Facility; T = Treatment Facility; TR = Technical Resource; SS = Scientific Study

NOTE: Scientific Studies & Technical Resource are not included on this map

SOEP – ATTACHMENT “D” PROJECT FACT SHEET EXAMPLE SKYLINKS MULTI-BENEFIT STORMWATER CAPTURE PROJECT

A multi-benefit stormwater capture project located at Skylinks Golf Course in Long Beach.

FUNDED IN: 2020

AMOUNT: \$10.5 Million (Design & Construction)

PROJECT LEAD: City of Long Beach

WATERSHED: Lower San Gabriel

PROJECT FEATURES:

- Infiltration system benefits park
- Captures water and recharges
- Creates new active park space and landscaping
- Provides grooming benefits
- Signage providing educational information

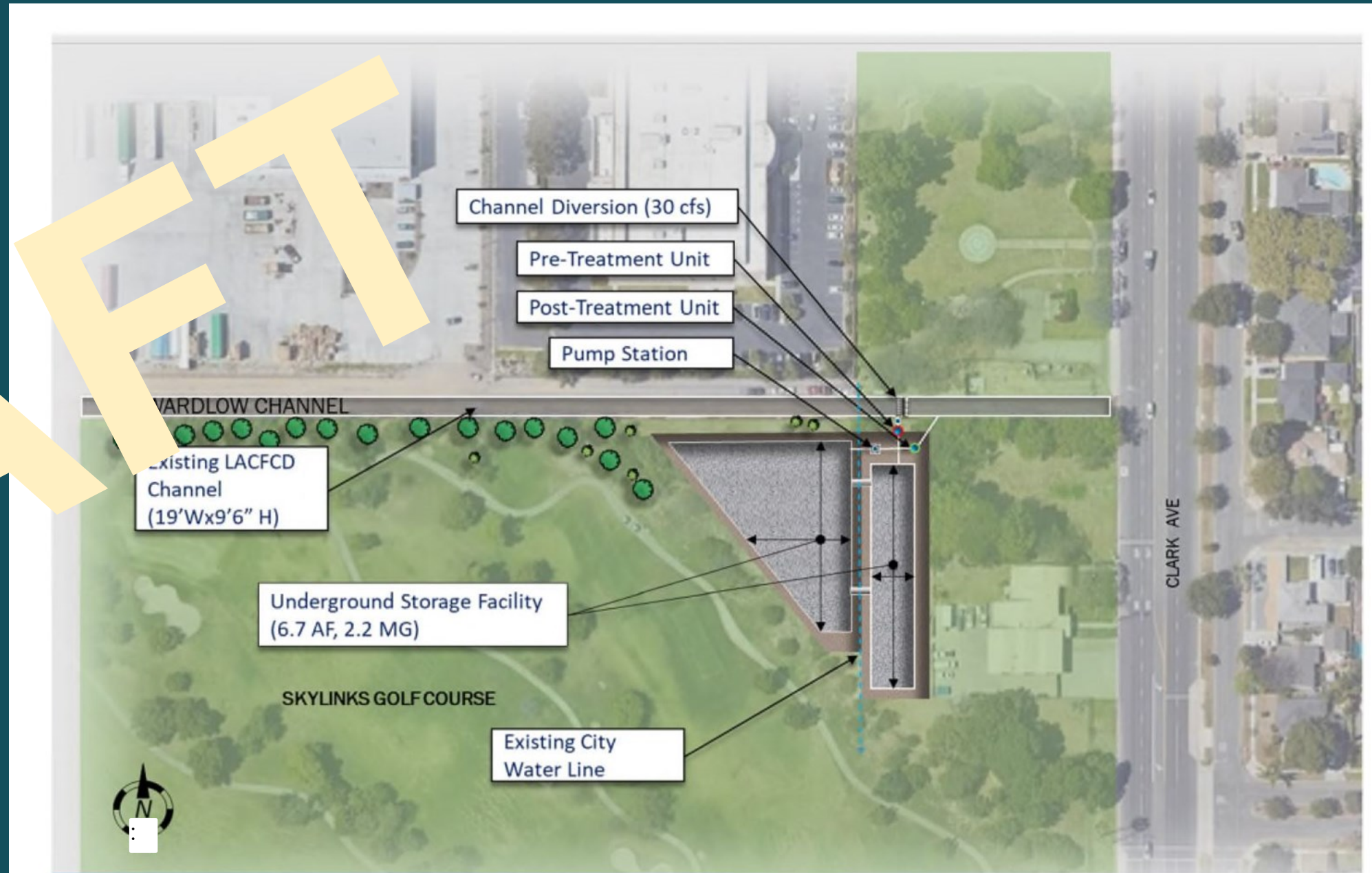
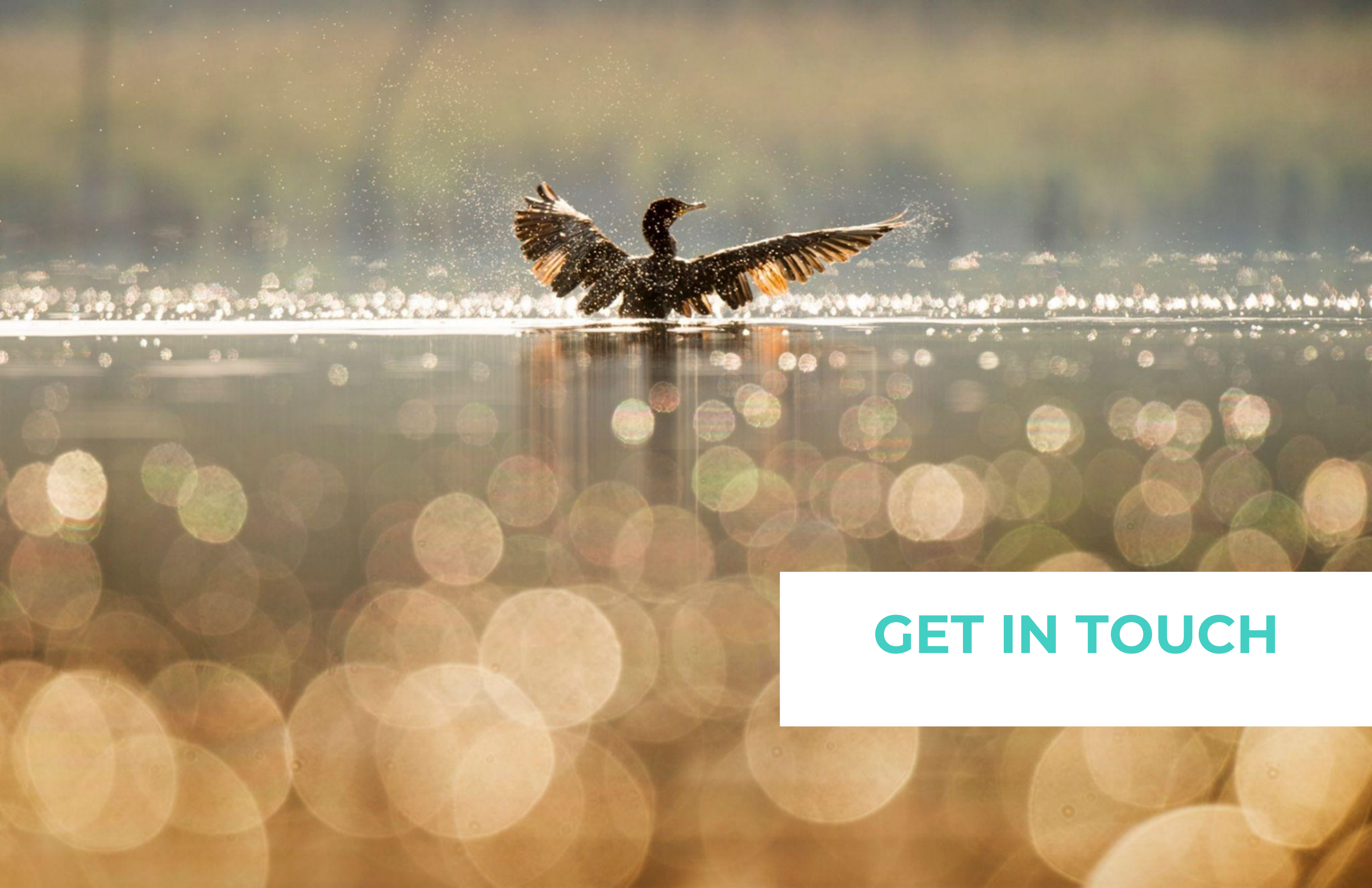


Figure 2. Conceptual layout configuration for Skylinks Golf Course project.



GET IN TOUCH

Clean Water Vision

Get Involved! Share your ideas with us!

Sign up for Lower San Gabriel River
Watershed Area Information and Events!

Visit us at:

cleanwatervision.com

Email us at:

lsgr@ohanavets.com

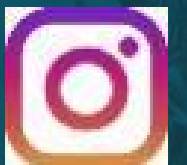
Follow us on social media!

[@lsgrwatershed](https://www.instagram.com/lsgrwatershed)

Community Outreach
Ideas?

Project Ideas?

Partnership
Ideas?



TAKE OUR 2 MINUTE COMMUNITY NEEDS SURVEY

What water issues concern you the most?

What does your community need more of?

What outdoor areas need improvement?

LSGR Watershed Area
Community Survey

www.cleanwatervision.com



WATERSHED COORDINATOR ROLE:

1

Solicit & Support New Projects

Identify parties with project ideas & connect them with the Technical Resources Program

2

Community Engagement

Gather input on community needs that SCW projects can help fulfill

3

Public Education

Educate the public about SCWP projects in their communities
+
Inform community members about how they can voice their input

PROJECT DEVELOPMENT PROCESS:



Anticipated Total Time Elapsed: 26 - 40 Months

~6-8 months

~6-8 months

~10-24 months

If project is deemed infeasible or does not meet Safe, Clean Water Program requirements for Infrastructure Program funding, project proponent should not apply for Infrastructure Program funding.

1

Solicit & Support New Projects

Identify parties with project ideas.

HAVE A PROJECT IDEA?

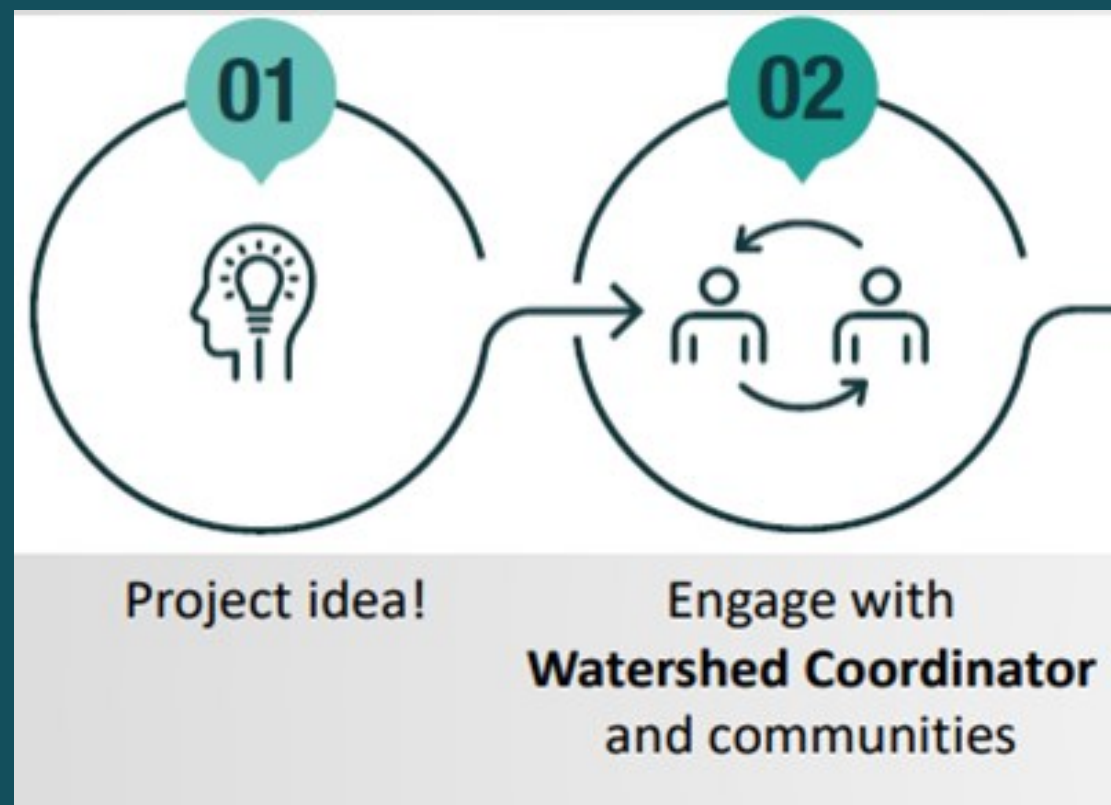
- ENGAGE WATERSHED COORDINATOR
- DEVELOP COMMUNITY ENGAGEMENT APPROACH
- DEVELOP PROJECT BENEFITS SUCH AS:

1

Solicit & Support New Projects

Identify parties with project ideas.

STEPS: 1 & 2



Improving flood management

Enhancing natural habitat and wetlands

Increasing public access to waterways

Creating new recreational opportunities

Enhancing green spaces at schools

Reducing local heat island effect

Increasing vegetation and tree cover

COMMUNITY ENGAGEMENT AND PROJECT SCORING CRITERIA

Projects must achieve a score of **at least 60 out of 110** to be considered for funding

Section	Score Range
A.1 Wet + Dry Weather Water Quality Benefits	50 points max
-OR-	
A.2 Dry Weather Only Water Quality Benefits	40 points max
B. Significant Water Supply Benefits	25 points max
C. Community Investments Benefits	10 points max
D. Nature-Based Solutions	15 points max
E. Leveraging Funds and Community Support	10 points max
TOTAL	110 points

WORKSHOPS



COMMUNITY ENGAGEMENT
A crucial part of any Safe Clean Water Application



2

Community Engagement

Gather input on community needs that SCW projects can help fulfill



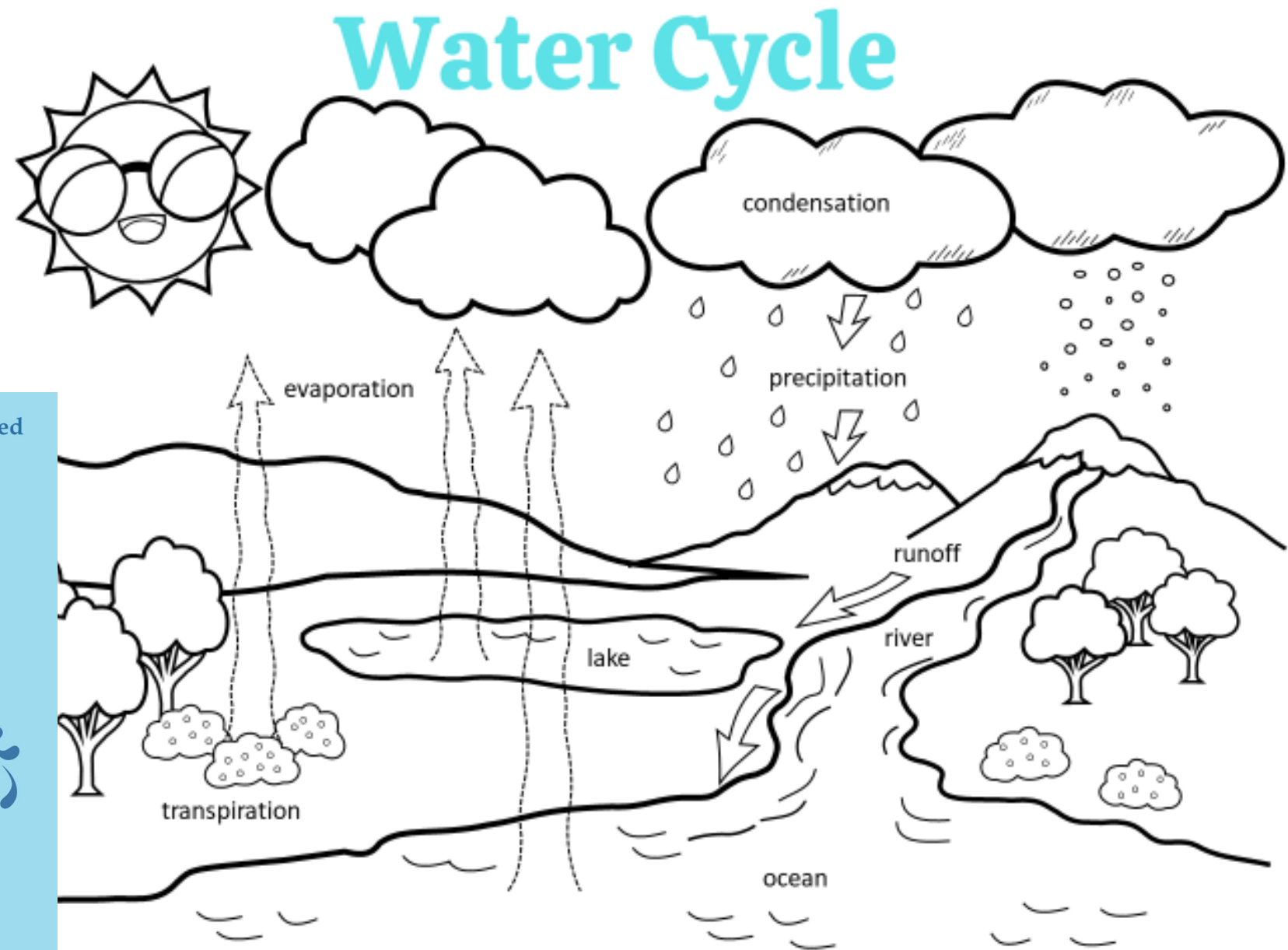
Phase 1: Community Engagement

WaterTalks | What is it?

DACTI (Disadvantaged Community and Tribal Involvement Program) in Greater Los Angeles County (GLAC) region - 3 IRWM Regions

- State of California Proposition 1 Water Bond and Integrated Regional Water Management
 - One of the largest state funded water equity projects in California
 - \$4.5M for Project Development
 - \$9M *minimum* for Project Implementation
- Engaging 104 communities across Los Angeles County
 - Economic and environmental distress
 - Participate as equals in planning for local green infrastructure and water sustainability projects





Lower San Gabriel River Watershed

Splash Activity Book



★ OhanaVETS ★
Clean Water Vision

3

Public Education

Educate the public about SCWP projects in their communities

EDUCATIONAL OUTREACH EVENTS

3

Public Education

Educate the public about SCWP projects in their communities

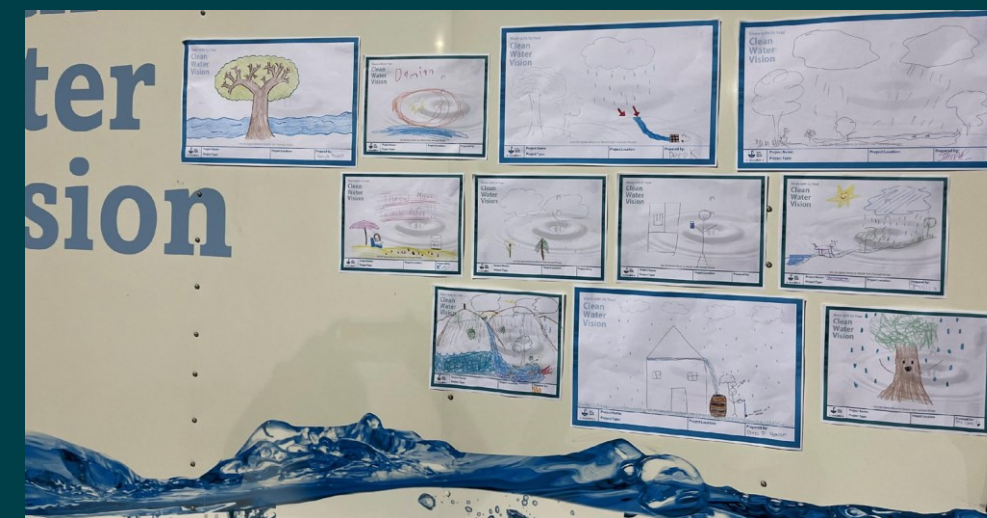


EDUCATIONAL OUTREACH EVENTS

3

Public Education

Educate the public about SCWP projects in their communities





HOW WE CAN SUPPORT YOU:

- Guide you in developing a project concept
- Help identify a public agency to “own” the project
- Provide guidance on applying for technical resource funding and on effectively engaging the community with a project concept
- Help identify cost-share partners



QUESTIONS

