

The Official Newsletter of the Shire Woodworking Club Inc | Reg No Y2889524 | ABN 15 974 163 667

“The Workshop” - 2B Turriell Bay Road, Lilli Pilli NSW 2229

Workshop: 02 9145 0308 Mob 0490 861 606 Membership: 0414 538 475

Editor: 0408 240 514 website : <https://shirewoodworking.com.au>



### Maxi Day - 14th Dec

8:45	Open Lilli Pilli Workshop
9:00	Monthly Meeting
9:30	Ian's Videos
10:00	Morning Tea
10:30	Show & Tell
11.30	Christmas Party
1:00	Raffle Draw

### President's Report December 2024

Safety is the responsibility of every member of the club. Can all Club members please make yourselves familiar with the Clubs EVACUATION PROCEDURE, lives may depend on it.

For the November Maxi-day we had a visit and talk from the GM of Woollooware Shores Village Liza Fox, which was very interesting and started some discussions.

Gary Mitchell also gave a demonstration of the Festool track saw, well done Gary.

I would like to thank everyone for their participation in the Bunnings Sausage Sizzle, we cooked 890 sausages, which was more than we anticipated. The cooks also got cooked under the tent.

On 27th October we had a visit from Mark Speakman, the sitting member for Cronulla, and the Leader of the New South Wales Liberal Party. Mark was very helpful in the club obtaining a community grant for the CNC router. Alan Richie showed Mark some samples of the components produced by the machine and put the machine to work in producing a clip together box. Mark was impressed by the ability of the machine, and Alan.

We had one community event during the month at Woollooware Shores Village, sales were good.

There is one milestone coming up for a club member, Jan Westerhof who turns 100 years this month, congratulations!

Community events this month

5th Dec a delivery of toys to the Randwick Children's Hospital

5th Dec Bunnings Xmas stall

7th Dec Bunnings sale desk at Bunnings

#### What's in this newsletter

- *Show and Tell*
- *President's report*
- *Evacuation Procedures*
- *Jan Westerhof-letters from the King and the PM*
- *Festool Track Saw*
- *Bunnings Sausage Sizzle*



Gary Healey - President



If you would like to receive this newsletter or have an article / idea for the newsletter, please contact the editor via email on [theshirewoodworkingclub@gmail.com](mailto:theshirewoodworkingclub@gmail.com).

Find Us On Facebook .. Search for “Shire Woodworking Club”



## Kids Chairs



## Gary Mitchell

These are the two chairs I've made to go with the table I showed last month for Sofia, one of my grandkids. Made from prime skip bin Oregon, frame dimensions 40X30mm. Whoever came up with the phrase "comedy of errors" clearly didn't hear my language during this project.

Error 1. In marking our Domino holes, inadvertently added holes to the front of the back legs, above the seat. Doh!

Error 2. In joining rear legs together, did one set in the wrong plane. The rungs should have been joined into the 40mm face. If error 1 hadn't occurred, this wouldn't have been possible. Double Doh!!

To fix error 2, I very carefully used a Japanese saw to slice through the offending joints, to then re-Domino the rungs and join the legs correctly. Which lead to...

Error 3. Once I cut through the joints, I realised I had very carefully cut through the joints on the legs that HAD been glued correctly. Triple Doh!!! So cut through the original mistake, and re-Dominoed both sets of rear legs. Result was both sets of rear legs were about 1-2 mm closer than the front legs. No problem. However, in that regluing, there was...

Error 4. One set of rear legs rocked when I laid it on it's backs after regluing. Wouldn't lay flat. Resolution should have been to recut and rejoin the rungs – however at this stage I had spent too much time on the whole table and chairs job. Which caused...

Error 5. Well I assume it caused this issue. After gluing the front and rear legs together, the seat (the bum part) on one rocked. Sanding wasn't making an impact. At this point the glue blocks weren't in place. So to fix this I upturned the chairs, positioned the glue blocks and screwed the seats to the glue blocks. Then clamped the frame onto the seat & glued the blocks in place.

Result was some blocks slightly above the rails – but seat didn't rock. After all that, I returned to Error 1. You know the one, "in the beginning, there was the original sin, from which all sins came...". I had glued Dominoes into the errant holes; however they were pretty obvious flaws. So I determined that Error 1 was better interpreted as a deliberate Design Improvement – intended to aid the learning experience. Plan was to have some engraving done on strips of 200X22mm ply and glue them over the rear legs above the seat. Sofia is about to turn 2, I thought I'd use the letters of the alphabet. One chair was to have 7 letters per side, the other 6. As the meerkats would say "simple!". However, I thought 'simple' was perhaps a bit too easy. So I decided to use ClipArt of animals, fruit or veggies to denote each letter. I should have just used the letters.... think of what starts with Q, U, X that would be easily recognisable by a 2-year-old.

Anyway, as with the table, 4 coats of Wipe on Poly were followed by a wax. The chairs were completed after the Maxiday showing and delivered to Sofia. All well appreciated. All I can say is thank the god of errors that I wasn't asked for 4 chairs. I'd still be swearing!

## Chairs



## Jan Westerhof

Jan presented two chairs to our Show & Tell with a request to help restore them. Doug O'Hara, took up the challenge and provided the following description of the restoration work.

"This is a Rafferty Chair with a paper fibre rush seat. This is a standard rush chair often referred to as a latter back chair. The frame has been cleaned and refinished to ensure it is glued securely ready for the seat weaving. The seat is made with twisted paper rope made from biodegradable material 4.5mm diameter in a 40-metre coil. The coil is initially dipped in clean cool water to allow it to absorb some moisture prior to drying on a towel prior to starting the weaving onto the seat frame. The end of the rope is fixed to the underside of the left frame with an upholstery tack then the weaving of the rope across the chair frame is commenced to create a triangular pattern that closely matches the companion chair.

The weaving across the frame opening need to ensure the role is at all times constantly tensioned and compacted to ensure each role strand closely touches each other throughout the weaving.

The process of weaving requires patience and frequent stops to tension the rope to ensure the tightest possible weave pattern. The rope is joined on the underside of the seat by reef knotting and then hiding the knot under the prior weave. If seat stiffing is needed this is achieved using cardboard inserts under the weaved pattern so they are never visible.

Finishing of the seat surfaces is achieved by using a very light coating of shellac varnish. A final light clear varnish coat is applied to help the chair surface resist dust buildup and give the seat finish a clean look."

Ian and I started the **cutting board** 10/10/24, completed it the next week and also then made a similar one which was Shire Woodworkers raffle 3rd prize at the Gynea fair. The wood used - the dark wood is Merbau, the light wood is Tassie Oak and squares are hardwood timber.

I sanded the board at home using 600 wet and dry and using the bee's wax and food-safe mineral oil mixture as the liquid solution to raise the grain while sanding, then finished with a clean final coat of the wax mixture.

I wish to thank Ian Rudd again for his assistance, knowledge and patience for a new participating woodworker. Also, the other club members for their assistance.

### **Clock mounted in Red Cedar Burl**

The Burl was a piece left laying out the front of the woodturners years ago, which no one wanted because it had a large hole and rot in the centre going very deep into the burl. I used a band saw to straighten the face then sanded the base and the face of it.

I decided the only thing that it was good for was to mount a clock in it and got the clock from Carbatec at Auburn. I used a hole saw and then a Forstner bit to make the hole. Had to drill a hole in the bottom at the back to push the clock out when the battery needs changing. It is finished in Danish oil.



### **Alan Ritchie**

Trivets are placed between a serving dish, bowl, or pan and a dining table, usually to protect the table from heat damage. Over the years I have found that trivets are quite popular during our sales. I developed several designs for trivets to be made on the CNC machine. I designed some round, some oval and some square. Using features of the CNC design software I was able to make some interesting wavy patterns for carving. The first production was several round ones in pine, then two round ones and an oval one in hardwood. They are all sanded and cleaned up and finished with our mineral oil and bees wax mix. I am very pleased with the results. I placed the six trivets in the Gallery after finishing them and four of them sold that first day. I have designed some more with trees, cats and dogs as the feature carving. I hope to make several trivets for our Christmas sales, then for sales next year.

### **Trivets**



### **Ian Rudd**

The basket weave cutting board was made using Merbau, Mountain Ash and Redgum. After joining strips a jig using a strong toggle clamp was used to cut the various exact lengths that are required to achieve the basket weave design. The board was sanded and coated with mineral oil and beeswax.

### **Basket Weave Cutting Board**



Gary provided a demonstration of the club's Festool Tracksaw Model TSC 55 KEB and has provided the following short explanation of 'how do you use it' and 'why would you use it'. If you choose to use the Track Saw you should seek guidance from Gary or one of the qualified workshop operator as well as check out one of the many utube presentations. The Track Saw is kept in the shop store (SE corner) along with very explicit manuals. We have two pieces of track. The saw slides into grooves in the track, and there are slots underneath for clamps.

**How do you use it ?** There is a bit of setup involved. The work has to be placed on a stable surface. The track has a sacrificial plastic edging that identifies exactly where the saw cut will be. The track needs to be clamped to the work or a bench under the work. Thought needs to be given to where the blade will cut through the work. If it will cut through the bench, there are a few pieces of (sacrificial) apricot coloured melamine (kept behind the Festool vacuum) that can be used to avoid cutting the bench.

Festool are excellent with dust collection. The saw has a dust extraction port and the Festool Vacuum can be used. A corded saw can be plugged in as the Mirka or Domino machines are – power on for the tool and vacuum starts. However as the saw is cordless, when you're ready to cut, turn the vacuum on first.

To use, setup the work, clamp the track to exactly the cut wanted, set the depth setting, plug the vac hose in, and do a dry run without power. You may need to have the vacuum hose over your shoulder. Then add the batteries to the saw. Vacuum on, and away you go.

**Why would you use it?** So with the amount of setup required, why wouldn't you just use the table saw? Feeding long pieces of timber into the table saw can be awkward. There are 2 X 1.4m tracks that can be joined (joiners plus a special Allen key tool) are in a cardboard envelope in the saw box. So you could use the tracksaw on something almost 2.8m long. Sometimes you may want cut a piece of timber that doesn't have a straight edge for the fence. No fence required for the tracksaw.

You may want to cut across a job too big for the Makita drop saw. With longer pieces sliding a short edge against the table saw fence can lead to skewing the cut – which can be dangerous. The tracksaw can be used for both rip and crosscuts.

The finish on the cut is better than any other saw we have.

There are a few users of the tracksaw – so if you have a job that where it may be appropriate to use – ask for some guidance.



## In case of fire:

At the last maxi day there was a short refresher on evacuation procedures in the event that there was a fire in one of the Club's premises.

Do you know what to do? One member suggested the first thing to do was to evacuate the building, but that might mean someone is left trapped or a small fire that could be safely controlled could become a major blaze.

There are two prominent signs "IN CASE OF FIRE" in both buildings, at the entry door and in the kitchen, which describe the recommended procedure.

The mnemonic to remember this procedure is "RACE":

"R" - Remove people from immediate danger

"A" - Alert everybody, including checking on the toilets and round the back of the Workshop storeroom. Ring the fire brigade on "000".

"C" - Confine the fire if safe to do so.

Use a fire blanket (there is one in each kitchen), and/or a fire extinguisher. There are six (6) fire extinguishers:

- Two (2) in the Gallery – one at the door and one in the kitchen
- Four (4) in the Workshop, two (2) black banded ones to use on the laser & CNC, and the other two that are totally red to use on all other fires – see photo of the two outside the storeroom.
- The black banded ones are beside the laser and outside the storeroom.
- The general all red ones are outside the storeroom and at the entry door.
- The photo shows both types outside the storeroom door.

"E" - Evacuate everybody safely to the assembly area in the park next door, and account for everybody.

For your own benefit it is recommended you periodically refresh your memory of these procedures by reading the "IN CASE OF FIRE" notice, noting the location of fire blankets and extinguishers, and reading the "how to use" instructions on the extinguishers.

Most importantly, you should not put yourself in any danger to try to control a fire. Only attempt this if you ~~believe it is safe to do so~~. The buildings and contents are insured. Your life is more important than these.

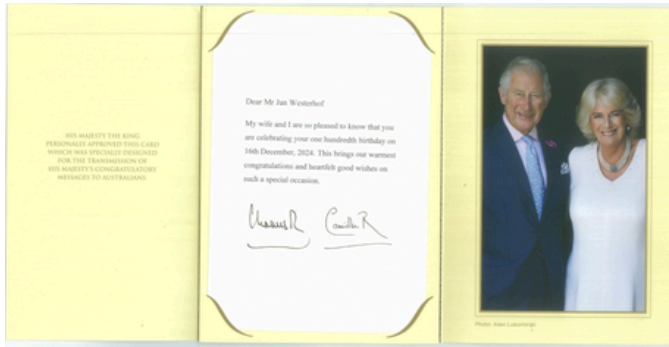


*Printed as a community service at the office of*

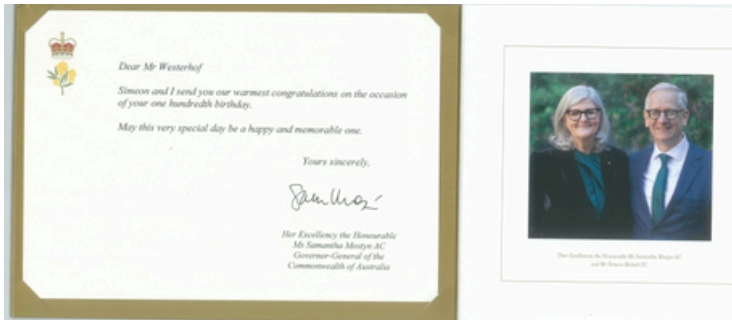
**SIMON KENNEDY** MP  
FEDERAL MEMBER FOR COOK



## Jan Westerhof turns 100 on the 16th December 2024



King Charles & Queen Camilla



Govenor General of Australia



Anthony Albanese  
Prime Minister of Australia



Premier of NSW

As part of the Maxi Day Show & Tell in May 2004 Jan brought along two pieces of marquetry that he made with a pen knife and little else while hiding from the Germans in a cubby hole between the roots of a tree in a forest area during the Germans' occupation of Holland during WW11. Jan's skills are even more remarkable in that not only was he a teenager at the time when he made them, they have survived in excellent condition.

Jan now lives in retirement in Tahmoor, NSW. He remains in good health and attends the local woodworking club. All the very best Jan from the Shire Woodworking Club.



### Woollooware Shores – Retirement Living in the Shire

At our recent Maxi Day we welcomed Liza Fox, the Village General Manager from Woollooware Shores, who provided us with an overview of the Village, as it prepares to open the final release launching in early 2025, with 78 new residences.

As part of this, Liza provided an overview of the recent changes at Woollooware Shores as Anglicare launches its 'For Life' model in the Village. Through the introduction of a range of enhanced services, including an onsite Care & Wellbeing team providing 24/7 support, combined with residences that have been specifically designed with both accessibility and luxury in mind, Woollooware Shores provides an easy transition to retirement living. Woollooware Shores boasts a full calendar of social activities and well-appointed facilities including two gyms, a cinema, indoor pool and of course a Resident Workshop!

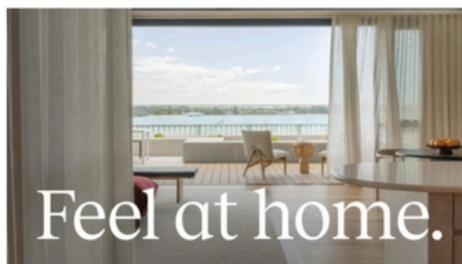
Liza also outlined the need for everyone in the room to ensure they have signed up to My Aged Care. This is the first step to ensuring that access to care (either in a retirement village or in your own home) is available when you need it. There are several different options available, and it is important to start the discovery journey if you are interested, as there are long wait periods for home care packages.

Her key tip is to start the journey early. Even accepting minimal support when you need it (such as help with cleaning) can help you remain independent for longer. In whatever setting you receive support, understanding the financial requirements is important.

Shire Wood workers who are keen to have a look around Woollooware Shores can contact Sales Consultant: Andrea Sestan on M: 0437 830 498 or Liza on M: 0459 236 878.



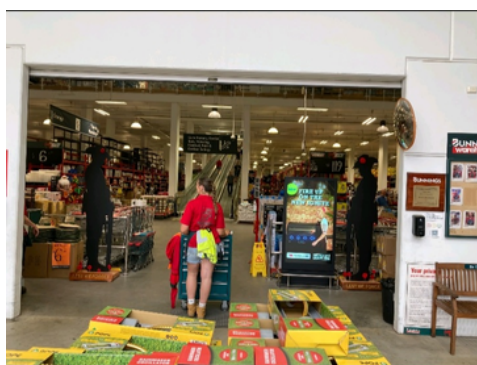
Woollooware Shores  
Christmas Market



# BUNNINGS BBQ/SAUSAGE SIZZLE - 23 NOVEMBER 2024



A very successful day both from a social as well as a financial outcome. We were blessed with good weather, although quite hot. Large crowds, sometimes spreading up the stairs and happy customers. It had been a while since our last bbq so took us a little while to get into the swing of things. A big thank you to all of our club members who helped out on the day with a special note to our co-ordinating group of Roger Dixon (R1), Maurice Smith, Roger Walsh (R3) and Gary Healey. We had a "lessons learnt" session after the bbq at the club and we are ready for our next venture. It is a very worthwhile exercise in terms of giving our club community profile and providing an opportunity for club members to get together and have a laugh. Thanks to all.



**Bunnings Entrance on Remembrance Day**



**Important  
phone  
numbers**

**Workshop: 02 9145 0308**

**Mob: 0490 861 606**

**Membership: 0414 538 475**

**Editor: 0408 240 514**

# GET TO KNOW US

## GLEN REEVE

I joined SWC after retiring in 2007. Formerly the Triton Club at Oyster Bay.

I grew up in Gladesville and went to Gladesville Primary followed by Meadowbank Boys High School.



Leaving after the intermediate certificate, I enrolled in a Pre-Apprenticeship Trade course at North Sydney Tech. This course was for Toolmaking which took in 1st year toolmaking and 4th year schooling. We had all the perks of school, sports afternoon each week etc.

After this I was employed as an Apprentice Toolmaker at Plessey's at Meadowbank. At the same time, I enrolled in the Production Engineering Certificate course at UTS. At Plessey's we had our own Apprentice area so the learning of using equipment etc was 1st class. I completed the Apprenticeship and Production Engineering course at the same time.



After approx. six months as a tradesman, I got a job at F Muller at Kingsgrove in the estimating, scheduling department. Muller were manufacturers of heat exchangers for car a/c, train a/c, refrigeration units, high rise a/c and cooling towers. After about 15 years in this position, I moved into sales as a Sales Engineer mainly selling OEM products for cars, trains and specialty trucks.

In approx. 1998, Mullers were sold to James N Kirby and within six months was sold to Heatcraft. I was employed here as Account Manager which lasted for ten years looking after similar products as before. I also introduced the heat pumps assy. for the new Dux hot water units into Heatcraft.

I think my interest in woodworking came from my Pop and Uncles who were builders. I would visit the work shop and watch them making all the items for houses, windows, doors etc using the old glue mixture. I can remember making wooden items in the back room when I was in Primary.

I have two sons and four grandkid's who enjoy all types of sports.

## LIBRARIAN UPDATE



We have received Issue 125 December 2024 of the Australian Wood Review. This Issue provides an extensive list of the latest tools from "Pinless Moisture Metre" to the Bosch 18V cordless router.

An excellent Article on making a small chair as illustrated in the attached picture. This may test our skills and knowledge of woodworking.

A complete rundown of the results of the Carbotech "Maker of the Year Awards".

An interesting article "where to learn fine woodworking".

Also go to page 22 Article titled "Design For The Future" that provides a detailed explanation of how to make this little chair.




The magazine is now in the club library.

OBE’s for 2024  
Reno Sciberras - April  
Robert Steege - June  
John Lischeld - August

Public Holidays  
Club will be observing  
Public Holidays on 25  
and 26 December and  
01 January 2025

Birthdays in December

06 Dec .....Alan Hendry	16 Dec ..... Gary Halder
09 Dec .... Logan Kurz	16 Dec ..JanWesterhof
09 Dec .....Gary Mitchell	22 Dec.Mark Greenacre
10 Dec ...Robert Quigley	25 Dec .....Stan Kirkman
12 Dec .....Kevin Gowen	27 Dec ...Michael Green



Used woodworking equipment for sale

Bosch hammer drill in case



Ozito router and table



GMC Bench drill press



GMC drill press label



Ryobi belt sander



Magno scrollsaw



Ryobi belt sander label



Bosch jigsaw




If you are interested, the items can be viewed in the Gallery. First come basis.  
Price: all items except the Ozito router and table are \$20  
Ozito router and table \$40      Contact: Maurice Smith

COMEDY CORNER

As the year comes to an end, I urge you to take care of yourself and avoid accidents because spare parts for old models like you are no longer in stock.

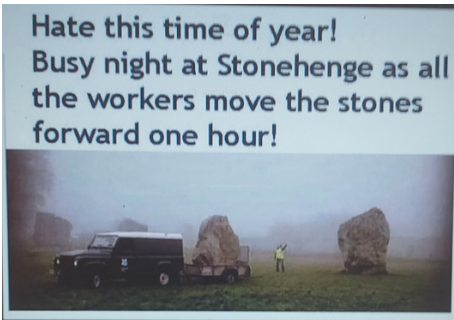


I was going to make up a joke about carpentry, but I can't think of any that wood work.



How do trees access the internet?  
They log in.

What did the tree wear to the pool party?  
Swimming trunks.



## Shire Woodworking Club 2024 Calendar

January 2024 1							February 2024 2							March 2024 3						
S	M	T	W	Th	F	Sa	S	M	T	W	Th	F	Sa	S	M	T	W	Th	F	Sa
	PH	2	3	4	5	6					1	2	3						1	2
7	8	9	10	11	12	13	4	5	6	7	8	9	10	3	4	5	6	7	8	9
14	15	16	17	18	19	20	11	12	13	14	15	16	17	10	11	12	13	14	15	16
21	22	23	24	25	PH	27	18	19	20	21	22	23	24	17	18	19	20	21	22	23
28	29	30	31				25	26	27	28	29			24	25	26	27	28	PH	PH
														PH						
April 2024 4							May 2024 5							June 2024 6						
S	M	T	W	Th	F	Sa	S	M	T	W	Th	F	Sa	S	M	T	W	Th	F	Sa
	PH	2	3	4	5	6				1	2	3	4							1
7	8	9	10	11	12	13	5	6	7	8	9	10	11	2	3	4	5	6	7	8
14	15	16	17	18	19	20	12	13	14	15	16	17	18	9	PH	11	12	13	14	15
21	22	23	24	PH	26	27	19	20	21	22	23	24	25	16	17	18	19	20	21	22
28	29	30					26	27	28	29	30	31		23	24	25	26	27	28	29
														30						
July 2024 7							August 2024 8							September 2024 9						
S	M	T	W	Th	F	Sa	S	M	T	W	Th	F	Sa	S	M	T	W	Th	F	Sa
	1	2	3	4	5	6					1	2	3	1	2	3	4	5	6	7
7	8	9	10	11	12	13	4	BH	6	7	8	9	10	8	9	10	11	12	13	14
14	15	16	17	18	19	20	11	12	13	14	15	16	17	15	16	17	18	19	20	21
21	22	23	24	25	26	27	18	19	20	21	22	23	24	22	23	24	25	26	27	28
28	29	30	31				25	26	27	28	29	30	31	29	30					
October 2024 10							November 2024 11							December 2024 12						
S	M	T	W	Th	F	Sa	S	M	T	W	Th	F	Sa	S	M	T	W	Th	F	Sa
		1	2	3	4	5						1	2	1	2	3	4	5	6	7
6	PH	8	9	10	11	12	3	4	5	6	7	8	9	8	9	10	11	12	13	14
13	14	15	16	17	18	19	10	11	12	13	14	15	16	15	16	17	18	19	20	21
20	21	22	23	24	25	26	17	18	19	20	21	22	23	22	23	24	PH	PH	27	28
27	28	29	30	31			24	25	26	27	28	29	30	29	30	31				

### LEGEND:

- Club Days - Every Tuesday to Thursday + Saturdays **except 1st Saturday**
- Committee Meeting 12:30pm - Tuesday, prior to 2nd Saturday.  
Note: Own projects catered for before & after meeting
- Maxi Day & General Meeting - 2nd Saturday. Note: Sep changed to 21st
- Toy Making Day - Last Thursday (Except April & December-3rd Thursday) - **No own projects**

Note: Last club day for 2024 is Saturday 21 December. Resume Thursday 2 January 2025  
Note: There must be a minimum of 3 members present on any day. No exceptions.

**Note: Wood carvers attend 1st Saturday + 3rd Wednesday (Evening)**

Merry Christmas

### Parade

I heard the bells on Christmas  
Day  
Their old, familiar carols play,  
And wild and sweet  
The words repeat  
Of peace on earth, good-will to  
men!

— Henry Wadsworth Longfellow

Merry  
Christmas

## CLUB COMMITTEE, SUB COMMITTEES & AUXILIARY POSITIONS

President	Gary Healey
Vice President	Roger Walsh
Secretary	Maurice Smith - Ph : 0414 538 475
Treasurer	Alan Ritchie
Committee Member	Ian Rudd, Roger Dixon, Graham Ethell
Assistant Secretary	Roger Dixon
Assistant Treasurer	Roger Walsh
Project Sub-Committee	Gary Healey, Ray Tregoning
Librarian	Roger Walsh
Safety Officers	Gary Healey, Ian Rudd, Ray Tregoning
Welfare Officer	Malcolm Armstrong, & Kevin Gowen
First Aid Officers	Graham Ethell & Alan Ritchie
Newsletter Editor	Roger Walsh
Catering Officers	Axel Tennie Richard Cain, Steve Lansley, Neil Mathews, Ray Tregoning,
Equipment & Training	Roger Dixon, Ray Tregoning, Maurice Smith, Ian Rudd
Raffles	Gary Mitchell
Exhibitions Sub-Committee	Graham Ethell, Ian Rudd, Malcolm Armstrong
Property Sub-Committee	Graham Ethell & Alan Ritchie, Maurice Smith
Toymaking	Malcolm Armstrong, Steve Lansley, Maurice Smith, Ian Rudd, Axel Tennie, Reno Sciberras
Facebook	Alan Ritchie
Webmaster	Maurice Smith
Woodcarvers' Liaison	