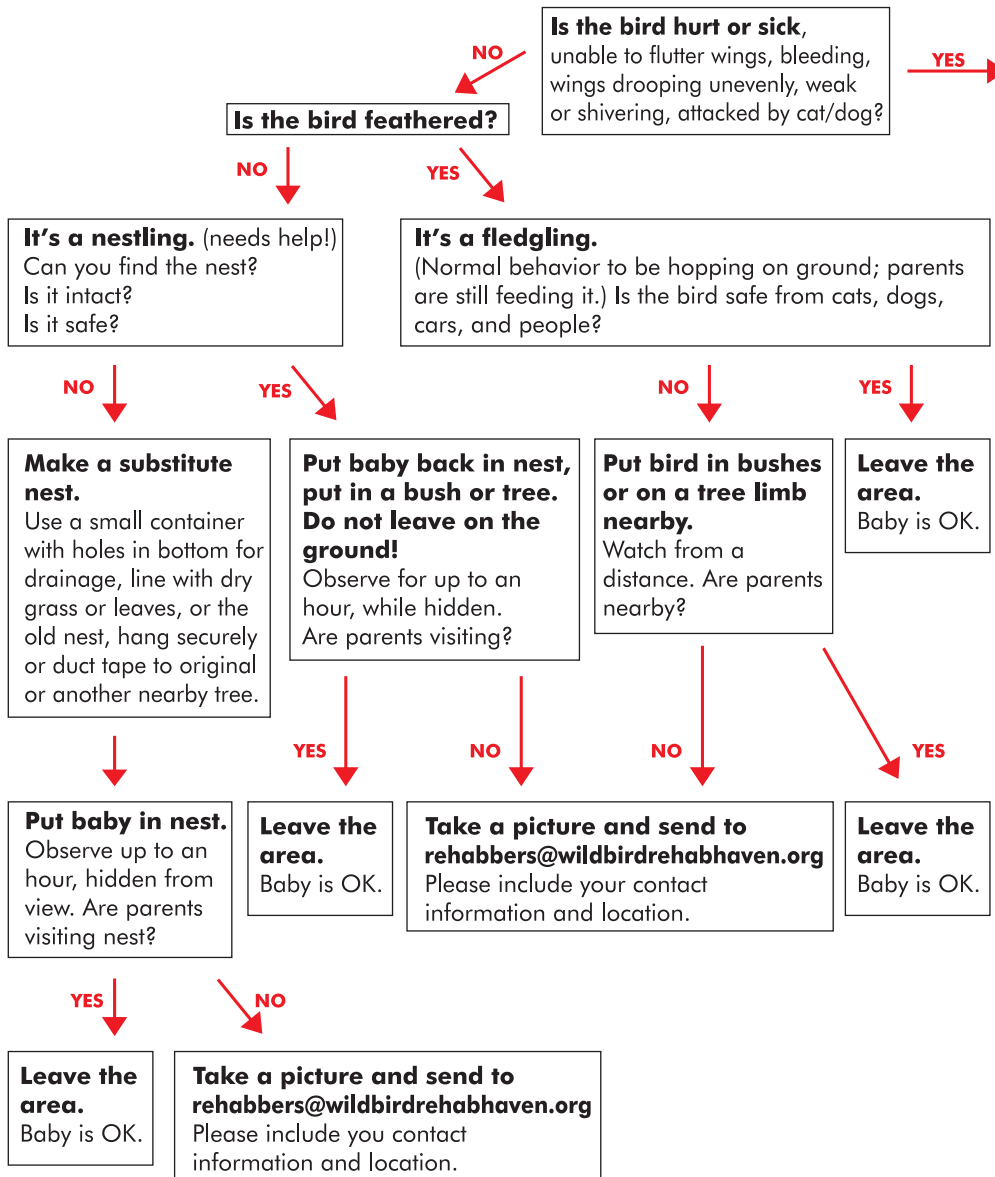


I Found a Baby Bird - Now What?



Is the bird hurt or sick,
unable to flutter wings, bleeding,
wings drooping unevenly, weak
or shivering, attacked by cat/dog?

YES →

Take a picture and send to
rehabbers@wildbirdrehabhaven.org
Please include your contact information
and location. This is the fastest way to
receive help.

If you wish to take an injured bird to an
avian veterinarian here is a partial list
on Oahu:

- Aloha Animal Hospital, Kahala.
808-734-2242
- HiPets, Mililani.
808-888-0866
- Mililani Mauka Vet Clinic.
808-626-7600
- Waipahu Waikele Pet Hospital
808-671-7387

WBRH is authorized by the state of
Hawaii to rehabilitate introduced
species of birds. Any who has come
upon a downed seabird can drop it
off at the following locations.
James Campbell National Wildlife
Refuge, the Hawaiian Humane
Society and Hawaii Wildlife Center.
The Oahu Seabird Aid Program will
pick the birds up from these locations.

Do not force food or water on sea
birds. Place birds in a box with air
holes, and take to a trained
rehabilitator as soon as possible.
Note that groundnesting seabird
parents are gone from dawn to dusk.
Disturb babies only if found in an
unsafe place.

WBRH is a 501(c)(3) nonprofit
charity run by volunteers and
supported by caring and concerned
citizens like you. Your tax deductible
donations pay for wild bird rescue
and rehabilitation, and are greatly
appreciated! Please make your
donations per check or thru PayPal.
Mahalo!

**A BABY BIRDS BEST CHANCE FOR SURVIVAL
IS WITH ITS PARENTS!!**

Parent birds WILL NOT REJECT a baby after being handled by humans!

Wild Bird Rehab Haven
P.O. Box 1897
Kailua, HI 96734