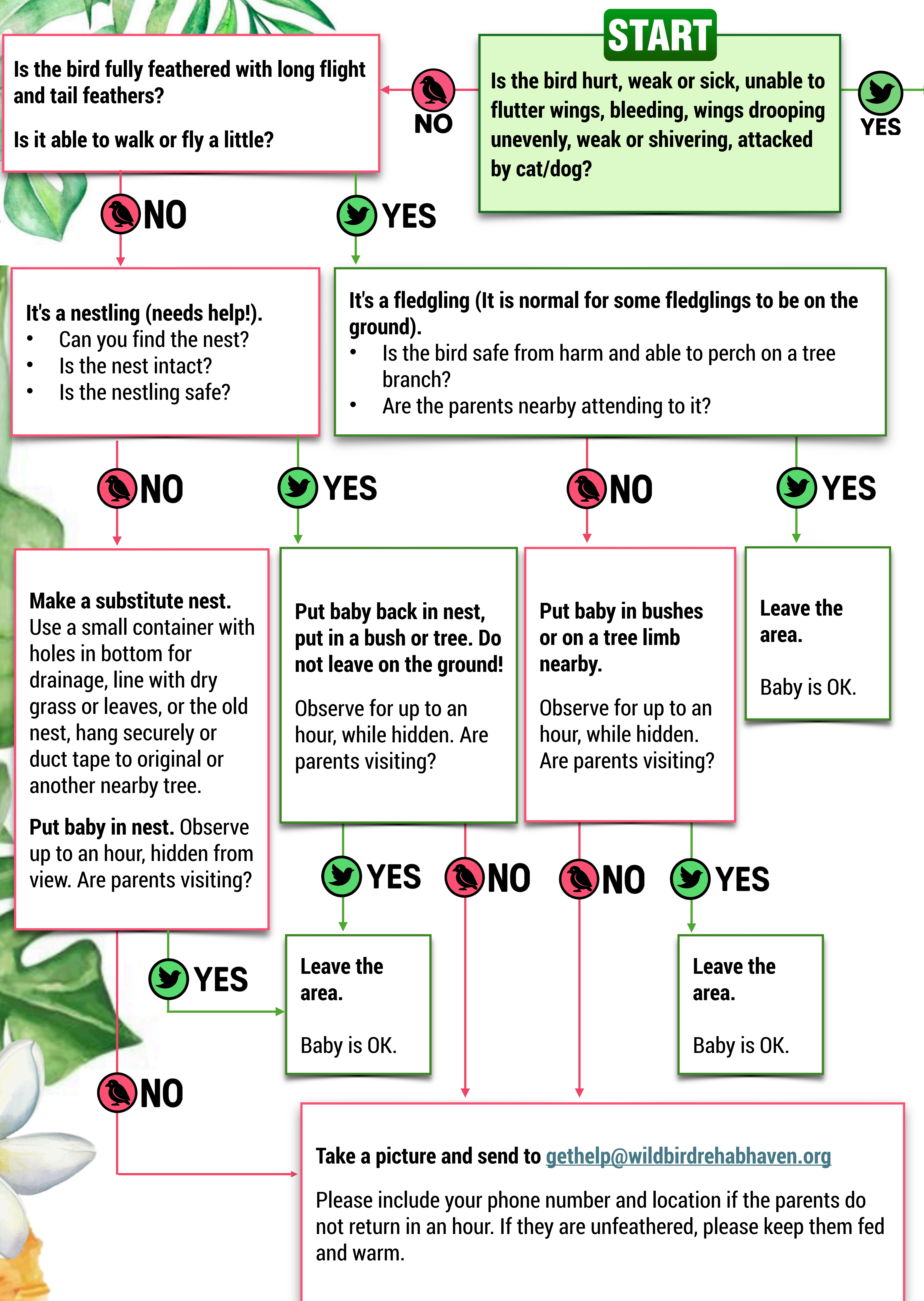


1 Found A Baby Bird, Now What?



Please send a clear photo of the bird to gethelp@wildbirdrehabhaven.org so we can confirm the age and species. Please include your phone number and city so we can contact you right away and find the best person to help you.

For immediate care, please pick the bird up and put them in a box lined with a towel for grip and comfort. Do not put water directly in their mouths. We can teach you how to safely feed a baby bird according to its species. You can also put them on a heating pad set to low. They should be at least your own body temperature. If the feet or under the wing feels cool, they need to be warmed up.

The Haven is authorized by the state of Hawaii to rehabilitate common wild birds. If you have found a protected species such as a seabird, please contact the following:

Hawaii Wildlife Center -

hawaiiwildlifecenter.org

Manu o Ku (White Terns) -

www.whiteterns.org

[\(808\) 379-7555](tel:(808)379-7555)

Feather and Fur Animal Hospital -

[808-254-1548](tel:808-254-1548)

Note that ground nesting seabird parents are gone from dawn to dusk.

Disturb babies only if found in an unsafe place.

WBRH is a 501(c)(3) nonprofit organization run by volunteers and is supported by caring and concerned citizens like you. Your tax deductible donations pay for wild bird rescue and rehabilitation, and are greatly appreciated! Please make your donations per check or thru the PayPal link on our website.

Mahalo!

Wild Bird Rehab Haven

P.O. Box 1897

Kailua, HI 96734



WILD BIRD
REHAB HAVEN

While a baby bird's best chance for survival is with its parents, please contact us to figure out the best course of action as every situation is different. We will walk you through what to do based on the time of day, location, and age/species of the bird. Parent birds will not reject a baby after being handled by humans. If baby birds have not been reunited with their parents by evening, keep the nestlings inside for the night for their safety and try again in the morning. We can mentor you on how to feed and keep them warm while they are in your care or we can connect you with a rehabber if they need long-term care. Thank you!