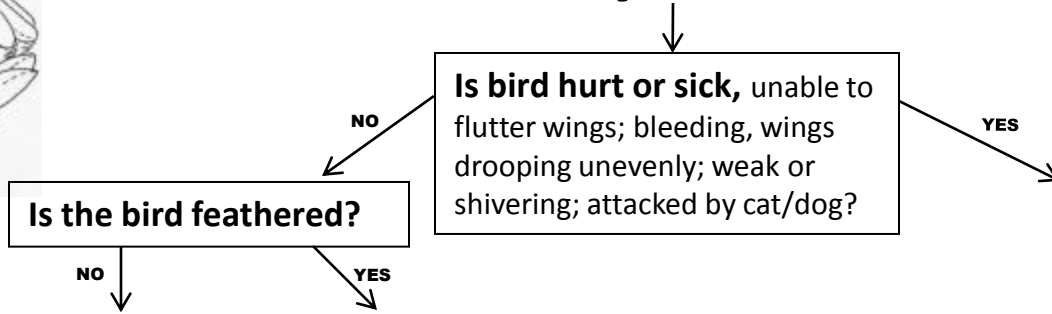
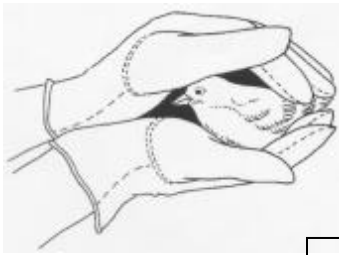



I Found a Baby Bird - Now What?



It's a nestling.
(needs help!)
*Can you find the nest?
Is it intact? Is it safe?*



NO → Make a substitute nest.
YES → Put baby back in nest.

Make a substitute nest.
Use a small container; line with dry grass or leaves, or the old nest; hang securely or duct tape to original or another nearby tree.

Put baby back in nest.
Observe for up to an hour, while hidden.
Are parents visiting?

YES → Put baby in nest.
NO → Call WBRH 808-447-9274


Put baby in nest.
Observe up to an hour, hidden from view.
Are parents visiting nest?

YES → Leave the area.
NO → Call WBRH 808-447-9274

Leave the area.
Baby is OK.

Call WBRH
808-447-9274

It's a fledgling. (Normal behavior to be hopping on ground; parents are still feeding it.)
Is bird safe from cats, dogs, cars, and people?



NO → Put bird in bushes or on a tree limb nearby.
YES → Leave the area.

Put bird in bushes or on a tree limb nearby.
Watch from a distance.
Are parents nearby?

NO → Call WBRH 808-447-9274
YES → Leave the area.

Leave the area.
Baby is OK.

Leave the area.
Baby is OK.

Call WBRH
808-447-9274

Leave the area.
Baby is OK.

A BABY BIRD'S BEST CHANCE FOR SURVIVAL IS WITH ITS PARENTS!!
Parent birds WILL NOT REJECT a baby after being handled by humans!

Call Wild Bird Rehab Haven (WBRH)
808-447-9274
Please leave a message and we'll return your call. For instructions on helping birds please read the reverse side of this flyer or visit our website:
www.wildbirdrehabhaven.org

If you wish to take an injured bird to an avian veterinarian here is a partial list on Oahu:

- Aloha Animal Hospital, Kahala. 808-734-2242
- Feather and Fur, Kailua. 808-254-1548
- Kailua Animal Clinic. 808-263-8863
- Mililani Mauka Vet Clinic. 808-626-7600
- The Pet Doctor, Kahala. 808-733-8828

WBRH is authorized by the state of Hawaii to rehabilitate introduced species of birds. Seabirds may be taken to Sea Life Park on Oahu: 808-259-2537. Do not force food or water on sea birds. Place birds in a box with air holes, and take to a trained rehabilitator as soon as possible. Note that ground-nesting seabird parents are gone from dawn to dusk. Disturb babies only if found in an unsafe place.

WBRH is a 501(c)(3) nonprofit charity run by volunteers and supported by caring and concerned citizens like you. Your tax deductible donations pay for wild bird rescue and rehabilitation, and are greatly appreciated!

Wild Bird Rehab Haven
P.O. Box 1897
Kailua, HI 96734