



compatico



Orleans™

RUSH 7 Day Program



compatico

RUSH 7 Day Program



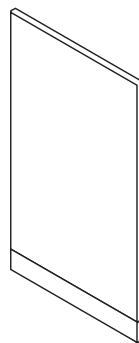
SIMPLE, BUT NOT LIMITED

Orleans™ is a sleek and simple design. It can be reconfigured to create a work space for any environment. Because of its **RUSH 7** Business Day Program, we have selected a trending color palette of White Wonder (WD) and Metallic Silver (MS) trim finishes to compliment the array of fabrics, laminates and storage options. Orleans™ is a modern system with detailed upgrades such as squared corner connections, flush design raceway covers, and premium powder coated finishes.

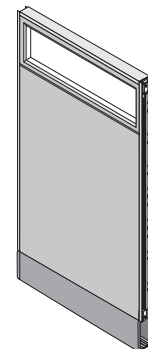


WHAT'S AVAILABLE ON **RUSH 7** DAY PROGRAM

Monolithic Hard Surface Panels and Segmented Hard Surface Panels

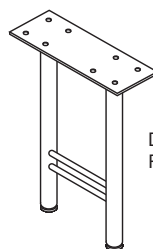


Hard Surface, Fabric

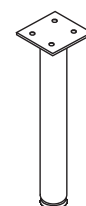


Glass Segmented
53" H & 67" H

Work Surface Supports

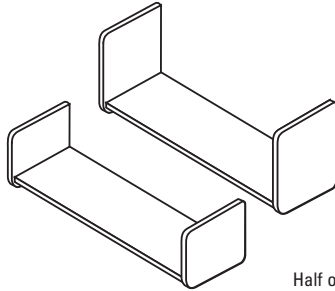


Double Peninsula

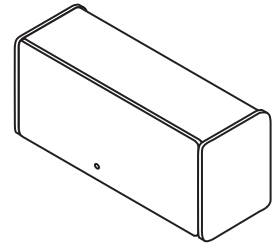


Single Peninsula

Overhead Storage

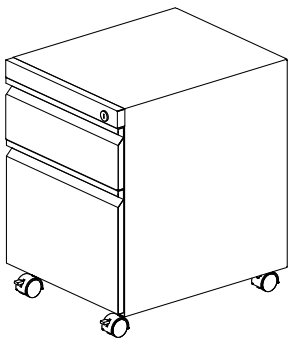


Half or Full
Height Shelf
Specify HMA283 or HMA284

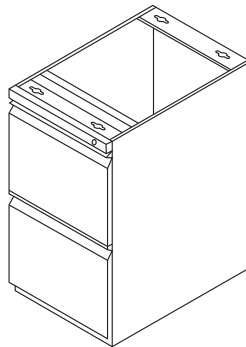


Over-The-Top
Metal Flipper Door Unit
Specify HMA277

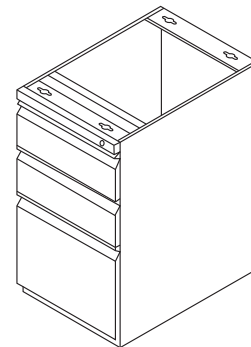
Pedestal and Lateral File



Mobile
Box/File
Specify CMPMP0320BF

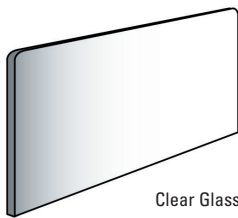


Supporting
File/File
Specify ONJ621

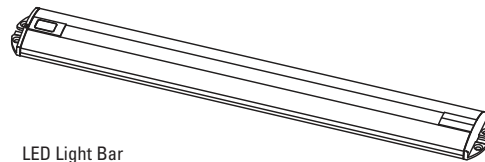


Supporting
Box/Box/File
Specify ONJ631

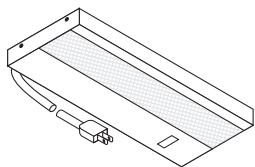
Accessories



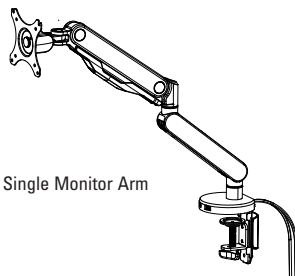
Clear Glass Screen



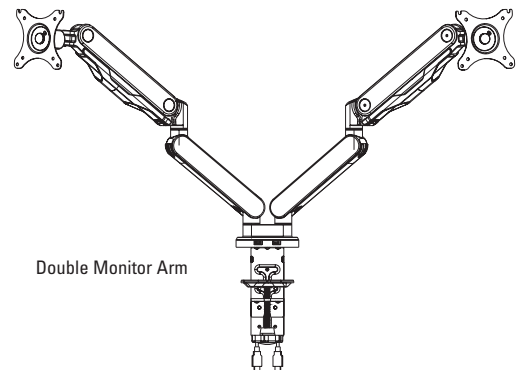
LED Light Bar



Task Light



Single Monitor Arm



Double Monitor Arm

Orleans **RUSH** 7 Day Program

Panel Dimensions

Monolithic

H: 39", 53", 67"

W: 24", 30", 36", 42", 48"

Specify XMB or XMC

Segmented with Clear Glass

H: 53", 67"

W: 24", 30", 36", 42", 48"

Specify XCC1 or XCB1

Panel Worksurface Dimensions

Corner with grommet

24" x 36"

24" x 48"

Specify .40xx

Rectilinear

D: 24"

W: 24", 30", 36", 42", 48", 60", 72"

Tempered Clear Glass Screen Dividers

H: 12"

W: 23", 29", 35", 41", 47", 59"

Specify G2BTGSC

Clips available in Metallic Silver (MS) and White Wonder (WD)

Program Notes

RUSH 7 Day Program will be offered with a maximum order size of 200K list. Any larger orders - Please check availability.

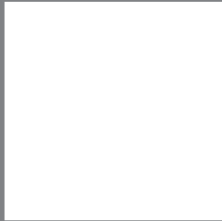
Order must be a complete system project (panels, storage and worksurfaces).

Lead time is 7 business days from receipt of deposit.

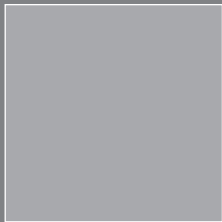


Colorways: (2) Finishes, (6) Laminates, (10) Fabrics

Paint Trim
Finishes



White Wonder - WD

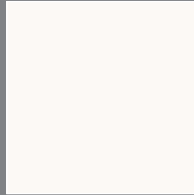


Metallic Silver - MS

2-Sided Work Surface
Laminates & Edges



W45D
Tranquility
2MM Frosty White Edgeband



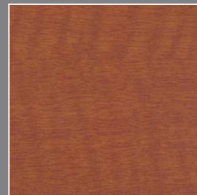
S411
Oxford White



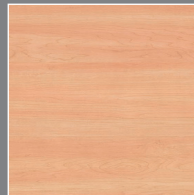
P890
Cactus Star
2MM Fashion Grey Edgeband



S548
Custom Grey

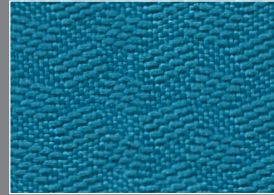


W12G
Wild Cherry
2MM Black Edgeband

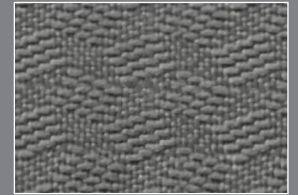


97W
Rock Maple

Panel
Fabrics



Loiret 24-06
*Not available on 60"W



Saran 24-18
*Not available on 60"W



Donnery 24-13
*Not available on 60"W



Marseille 19-85



Toulouse 19-86



Dove Grey 15-100D



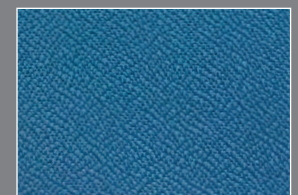
Seafoam - 15-103D



Winter Birch Taupe - 15-17D



Sand Dune 15-09D



Cascade Blue - 15-06D



Swatch images may not be 100% accurate in terms of color & pattern.
Be sure to order a sample before finalizing finishes.

Orleans™



5005 Kraft Ave. SE Suite A | Grand Rapids, MI 49512
P: 800.336.1772 | www.compatico.com

Revised Date: February 2020

Front and Back Cover:
Fabrics (Guilford of Maine) :
Network 4158-020 Frost
High Beams 9834-2629 Ocean
Cabana Stripe 9405-5020 Ocean
Surface: Formica® White Matte
Finish: WD (White Wonder)
Dividers: Clear