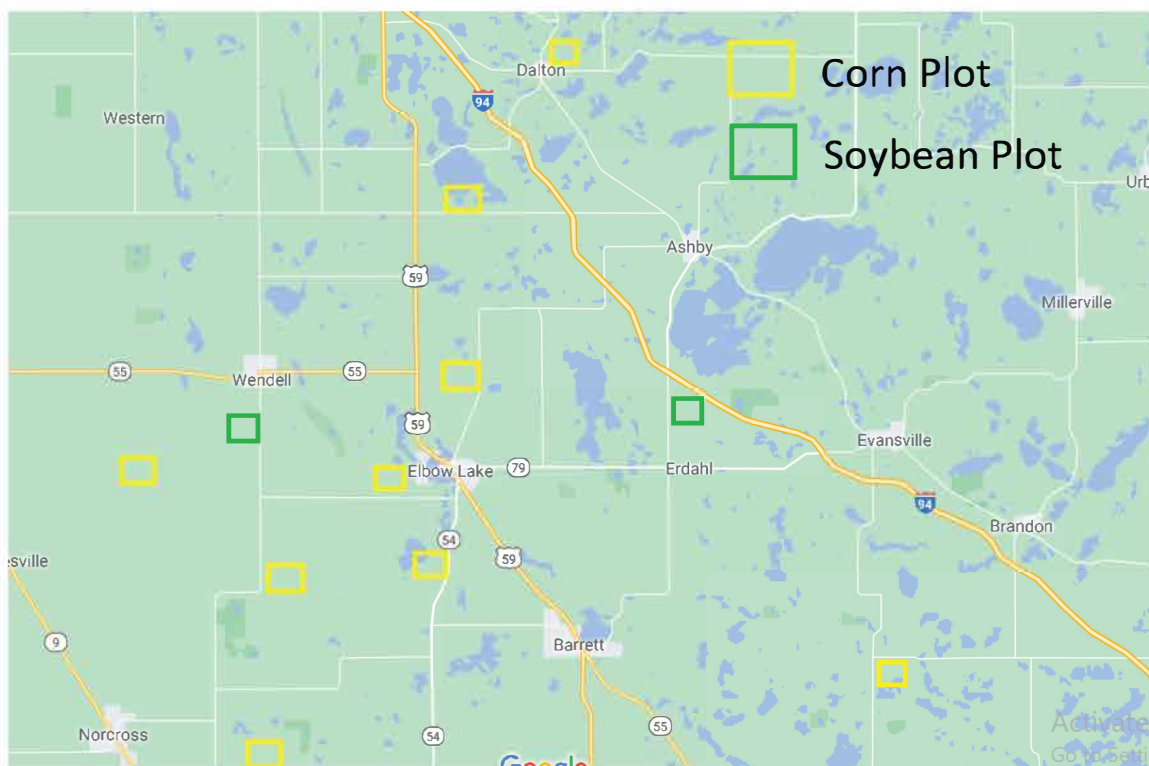


# 2020 YIELD RESULTS



**Includes: Combined Comparisons across  
MN/ND/SD, Red River Marketing Plots,  
Area Plot Results, Competitive Plots**



# WE ENGINEER THE SEEDS. NOT THE NUMBERS.

2020 Corn Performance  
MN, ND, SD On-Farm Strips as of November 9, 2020

| Pioneer® Hybrid/ Brand | Comp Brand | Comp Hybrid/ Brand | # Cmp | Prim Yield (bu/a) | Yld Adv (bu/a) | Yld %Wins | Prim Mst (%) | Mst Adv | Prim Tst Wt (lb/bu) | Tst Wt Adv | AGI Adv |
|------------------------|------------|--------------------|-------|-------------------|----------------|-----------|--------------|---------|---------------------|------------|---------|
| P8588AM                | DeKalb     | DKC37-50RIB        | 8     | 168.5             | 1.1            | 25%       | 14.8         | 0.8     | 55.9                | 1.0        | \$9     |
|                        | Pioneer    | P8234AM            | 8     | 161.2             | 14.5           | 88%       | 16.5         | 0.3     | 53.9                | -0.4       | \$51    |
|                        | Pioneer    | P8352AM            | 33    | 156.4             | 5.1            | 76%       | 15.6         | 0.1     | 55.1                | 0.5        | \$18    |
|                        | Pioneer    | P8639AM            | 6     | 122.5             | -3.3           | 33%       | 13.9         | 0.8     | 54.7                | 1.7        | (\$11)  |
|                        | Pioneer    | P8736AM            | 43    | 178.2             | -8.0           | 23%       | 15.5         | 1.3     | 56.7                | 0.9        | (\$20)  |
|                        | Pioneer    | P8989AM            | 38    | 178.6             | -8.6           | 18%       | 15.6         | 2.0     | 56.7                | 1.4        | (\$17)  |
| P8736AM                | DeKalb     | DKC37-50RIB        | 10    | 174.5             | 4.0            | 80%       | 18.1         | -0.9    | 53.9                | 0.1        | \$10    |
|                        | Pioneer    | P8234AM            | 6     | 174.6             | 16.6           | 100%      | 17.6         | -2.3    | 53.9                | -1.3       | \$44    |
|                        | Pioneer    | P8352AM            | 27    | 175.1             | 10.0           | 67%       | 17.4         | -1.8    | 54.5                | -0.9       | \$24    |
|                        | Pioneer    | P8588AM            | 43    | 186.2             | 8.0            | 77%       | 16.8         | -1.3    | 55.7                | -0.9       | \$20    |
|                        | Pioneer    | P8989AM            | 44    | 186.5             | 0.7            | 52%       | 17.1         | 0.8     | 55.5                | 0.4        | \$8     |
|                        | Pioneer    | P9188AM            | 40    | 188.0             | 0.5            | 52%       | 17.2         | 0.9     | 55.4                | 0.2        | \$8     |
|                        | Pioneer    | P9211AM            | 30    | 188.5             | 0.5            | 43%       | 16.6         | 1.9     | 55.9                | 1.4        | \$16    |
| P8989AM                | DeKalb     | DKC37-50RIB        | 8     | 175.8             | 4.3            | 63%       | 16.7         | -1.0    | 54.7                | -0.3       | \$10    |
|                        | DeKalb     | DKC42-05RIB        | 12    | 197.0             | -1.0           | 50%       | 15.8         | 0.2     | 56.8                | 0.8        | (\$3)   |
|                        | DeKalb     | DKC44-80RIB        | 9     | 204.9             | -10.2          | 11%       | 15.4         | 0.7     | 57.3                | 1.3        | (\$30)  |
|                        | Pioneer    | P8588AM            | 38    | 187.2             | 8.6            | 82%       | 17.6         | -2.0    | 55.3                | -1.4       | \$17    |
|                        | Pioneer    | P8736AM            | 44    | 185.8             | -0.7           | 45%       | 17.9         | -0.8    | 55.2                | -0.4       | (\$8)   |
|                        | Pioneer    | P9188AM            | 65    | 187.3             | -0.9           | 42%       | 16.7         | 0.1     | 56.1                | -0.1       | (\$3)   |
|                        | Pioneer    | P9211AM            | 53    | 185.7             | -1.6           | 38%       | 16.1         | 0.7     | 56.5                | 0.7        | (\$1)   |
|                        | Pioneer    | P9301AM            | 45    | 184.5             | -6.4           | 31%       | 16.1         | 0.7     | 56.7                | -0.9       | (\$18)  |
|                        | Pioneer    | P9492AM            | 48    | 187.2             | -11.9          | 15%       | 15.4         | 0.7     | 57.2                | 0.6        | (\$38)  |
| P9188AM                | DeKalb     | DKC37-50RIB        | 5     | 167.9             | 3.7            | 80%       | 16.4         | -0.9    | 54.5                | -0.7       | \$8     |
|                        | DeKalb     | DKC42-05RIB        | 14    | 207.2             | -1.8           | 36%       | 16.0         | 0.3     | 57.4                | 0.8        | (\$5)   |
|                        | DeKalb     | DKC44-80RIB        | 21    | 203.1             | -12.6          | 10%       | 16.8         | 1.0     | 57.4                | 1.6        | (\$36)  |
|                        | Pioneer    | P8736AM            | 40    | 187.5             | -0.5           | 47%       | 18.1         | -0.9    | 55.2                | -0.2       | (\$8)   |
|                        | Pioneer    | P8989AM            | 65    | 188.2             | 0.9            | 55%       | 16.8         | -0.1    | 56.2                | 0.1        | \$3     |
|                        | Pioneer    | P9211AM            | 76    | 195.4             | -3.0           | 33%       | 16.8         | 0.6     | 56.8                | 0.8        | (\$5)   |
|                        | Pioneer    | P9301AM            | 64    | 196.0             | -5.8           | 33%       | 16.8         | 0.6     | 57.0                | -0.9       | (\$16)  |
|                        | Pioneer    | P9301Q             | 6     | 220.9             | -2.1           | 33%       | 18.1         | 0.7     | 57.2                | -0.9       | (\$1)   |
|                        | Pioneer    | P9492AM            | 72    | 198.7             | -9.4           | 19%       | 16.3         | 0.6     | 57.4                | 0.7        | (\$28)  |



# WE ENGINEER THE SEEDS. NOT THE NUMBERS.

2020 Corn Performance  
MN, ND, SD On-Farm Strips as of November 9, 2020

| Pioneer® Hybrid/ Brand | Comp Brand | Comp Hybrid/ Brand | # Cmp | Prim Yield (bu/a) | Yld Adv (bu/a) | Yld %Wins | Prim Mst (%) | Mst Adv | Prim Tst Wt (lb/bu) | Tst Wt Adv | AGI Adv |
|------------------------|------------|--------------------|-------|-------------------|----------------|-----------|--------------|---------|---------------------|------------|---------|
| P9211AM                | DeKalb     | DKC37-50RIB        | 5     | 179.2             | 4.5            | 80%       | 18.3         | -2.8    | 53.6                | -2.2       | (\$2)   |
|                        | DeKalb     | DKC42-05RIB        | 21    | 197.0             | 7.1            | 62%       | 15.2         | 0.0     | 56.9                | 0.1        | \$25    |
|                        | Pioneer    | P8989AM            | 53    | 187.3             | 1.6            | 62%       | 16.8         | -0.7    | 55.7                | -0.7       | \$1     |
|                        | Pioneer    | P9188AM            | 76    | 198.4             | 3.0            | 66%       | 17.4         | -0.6    | 56.0                | -0.8       | \$5     |
|                        | Pioneer    | P9301AM            | 75    | 196.3             | -1.5           | 45%       | 16.8         | 0.0     | 56.4                | -1.7       | (\$6)   |
|                        | Pioneer    | P9301Q             | 7     | 224.6             | 1.3            | 71%       | 18.5         | 0.2     | 56.6                | -1.5       | \$6     |
|                        | Pioneer    | P9492AM            | 91    | 197.4             | -3.8           | 30%       | 16.4         | 0.1     | 56.7                | -0.2       | (\$13)  |
| P9211Q                 | Pioneer    | P9301AM            | 12    | 208.0             | -2.8           | 42%       | 15.1         | 0.2     | 57.1                | -1.8       | (\$9)   |
|                        | Pioneer    | P9551Q             | 42    | 207.8             | -10.3          | 17%       | 15.0         | 1.0     | 57.4                | -0.2       | (\$30)  |
|                        | Pioneer    | P9608Q             | 17    | 205.7             | -3.8           | 35%       | 14.2         | 0.7     | 57.4                | -1.2       | (\$9)   |
| P9301AM                | DeKalb     | DKC42-05RIB        | 19    | 201.6             | 7.6            | 53%       | 15.7         | -0.2    | 58.8                | 2.2        | \$25    |
|                        | DeKalb     | DKC44-80RIB        | 22    | 207.4             | -4.0           | 27%       | 16.8         | 0.6     | 58.8                | 2.8        | (\$9)   |
|                        | DeKalb     | DKC45-65RIB        | 5     | 203.8             | 2.1            | 60%       | 14.4         | 0.2     | 61.0                | 2.3        | \$7     |
|                        | DeKalb     | DKC47-54RIB        | 12    | 197.7             | -2.5           | 67%       | 15.3         | 2.1     | 59.3                | 1.9        | \$6     |
|                        | Pioneer    | P9188AM            | 64    | 201.8             | 5.8            | 67%       | 17.4         | -0.6    | 57.9                | 0.9        | \$16    |
|                        | Pioneer    | P9211AM            | 75    | 197.8             | 1.5            | 53%       | 16.8         | 0.0     | 58.2                | 1.7        | \$6     |
|                        | Pioneer    | P9492AM            | 83    | 200.0             | -3.1           | 41%       | 16.5         | 0.1     | 58.4                | 1.6        | (\$10)  |
|                        | Pioneer    | P9551Q             | 58    | 200.7             | -4.2           | 43%       | 16.0         | 0.8     | 58.6                | 1.7        | (\$8)   |
|                        | Pioneer    | P9608AM            | 25    | 185.9             | 2.7            | 60%       | 15.6         | 0.7     | 58.2                | 0.2        | \$13    |
| P9301Q                 | Pioneer    | P9188AM            | 6     | 223.0             | 2.1            | 67%       | 18.8         | -0.7    | 58.1                | 0.9        | \$1     |
|                        | Pioneer    | P9211AM            | 7     | 223.3             | -1.3           | 29%       | 18.8         | -0.2    | 58.1                | 1.5        | (\$6)   |
|                        | Pioneer    | P9492AM            | 8     | 226.1             | -5.4           | 13%       | 18.5         | 0.1     | 58.6                | 1.4        | (\$17)  |
|                        | Pioneer    | P9608Q             | 5     | 222.4             | 3.3            | 60%       | 18.9         | 0.1     | 58.6                | 0.5        | \$12    |



# WE ENGINEER THE SEEDS. NOT THE NUMBERS.

2020 Corn Performance  
MN, ND, SD On-Farm Strips as of November 9, 2020

| Pioneer®<br>Hybrid/ Brand | Comp<br>Brand | Comp Hybrid/ Brand | # Cmp | Prim<br>Yield<br>(bu/a) | Yld Adv<br>(bu/a) | Yld<br>%Wins | Prim Mst<br>(%) | Mst Adv | Prim Tst<br>Wt<br>(lb/bu) | Tst Wt<br>Adv | AGI Adv |
|---------------------------|---------------|--------------------|-------|-------------------------|-------------------|--------------|-----------------|---------|---------------------------|---------------|---------|
| P9492AM                   | Beck's        | 4292V2P            | 5     | 214.3                   | 19.7              | 60%          | 16.7            | 0.3     | 57.7                      | 1.9           | \$70    |
|                           | Beck's        | 4844V2P            | 5     | 222.8                   | 4.3               | 60%          | 16.7            | 1.3     | 57.4                      | 1.1           | \$27    |
|                           | Channel       | 194-49DGV2PRIB     | 5     | 215.6                   | 0.8               | 60%          | 16.7            | 1.7     | 57.2                      | 0.7           | \$16    |
|                           | DeKalb        | DKC41-99RIB        | 7     | 214.1                   | 12.0              | 100%         | 16.8            | -0.9    | 57.2                      | -0.3          | \$36    |
|                           | DeKalb        | DKC42-05RIB        | 24    | 203.1                   | 10.2              | 83%          | 15.7            | -0.3    | 57.1                      | 0.0           | \$33    |
|                           | DeKalb        | DKC43-75RIB        | 5     | 213.2                   | 2.5               | 60%          | 17.8            | -0.6    | 56.7                      | -0.3          | \$4     |
|                           | DeKalb        | DKC44-80RIB        | 34    | 210.3                   | -1.6              | 38%          | 16.3            | 0.1     | 57.1                      | 0.8           | (\$4)   |
|                           | DeKalb        | DKC45-65RIB        | 7     | 204.4                   | 0.1               | 57%          | 14.3            | 0.3     | 58.5                      | 0.8           | \$1     |
|                           | DeKalb        | DKC47-27RIB        | 5     | 214.2                   | 3.8               | 40%          | 17.1            | 0.7     | 56.3                      | -0.4          | \$17    |
|                           | DeKalb        | DKC47-54RIB        | 29    | 205.1                   | 0.3               | 48%          | 15.5            | 1.9     | 57.3                      | -0.3          | \$15    |
|                           | DeKalb        | DKC47-55RIB        | 7     | 207.5                   | 8.2               | 100%         | 15.5            | 1.1     | 57.1                      | -0.3          | \$35    |
|                           | Pioneer       | P9211AM            | 91    | 201.1                   | 3.8               | 70%          | 16.5            | -0.1    | 56.9                      | 0.2           | \$13    |
|                           | Pioneer       | P9301AM            | 83    | 203.0                   | 3.1               | 58%          | 16.6            | -0.1    | 56.8                      | -1.6          | \$10    |
|                           | Pioneer       | P9551Q             | 134   | 209.7                   | 0.5               | 47%          | 15.5            | 0.6     | 57.1                      | -0.3          | \$5     |
|                           | Pioneer       | P9608AM            | 42    | 200.0                   | 7.3               | 81%          | 15.4            | 0.6     | 56.9                      | -1.2          | \$28    |
|                           | Pioneer       | P9772AM            | 201   | 211.2                   | -5.5              | 29%          | 15.2            | 1.1     | 57.4                      | 0.7           | (\$12)  |
| Pioneer                   | P9880AM       | 45                 | 198.9 | -3.8                    | 40%               | 14.8         | 1.9             | 57.4    | 0.5                       | (\$2)         |         |
| P9551Q                    | DeKalb        | DKC42-05RIB        | 13    | 210.2                   | 16.4              | 85%          | 16.6            | -1.1    | 57.5                      | 0.3           | \$47    |
|                           | DeKalb        | DKC44-80RIB        | 25    | 211.8                   | -1.0              | 36%          | 16.7            | -0.5    | 57.6                      | 1.5           | (\$6)   |
|                           | DeKalb        | DKC45-65RIB        | 5     | 205.0                   | 2.0               | 60%          | 14.6            | -0.2    | 58.9                      | 0.4           | \$4     |
|                           | DeKalb        | DKC47-54RIB        | 19    | 204.0                   | 4.8               | 79%          | 15.9            | 1.5     | 57.6                      | 0.0           | \$27    |
|                           | Pioneer       | P9211Q             | 42    | 218.1                   | 10.3              | 83%          | 16.0            | -1.0    | 57.5                      | 0.2           | \$30    |
|                           | Pioneer       | P9301AM            | 58    | 204.9                   | 4.2               | 57%          | 16.8            | -0.8    | 57.0                      | -1.7          | \$8     |
|                           | Pioneer       | P9492AM            | 134   | 209.2                   | -0.5              | 52%          | 16.1            | -0.6    | 57.4                      | 0.3           | (\$5)   |
|                           | Pioneer       | P9608Q             | 36    | 217.6                   | 4.9               | 64%          | 16.6            | -0.4    | 57.3                      | -1.0          | \$14    |
|                           | Pioneer       | P9772AM            | 122   | 210.3                   | -5.3              | 35%          | 15.9            | 0.7     | 57.6                      | 1.0           | (\$13)  |
|                           | Pioneer       | P9880AMXT          | 72    | 220.5                   | -4.3              | 35%          | 16.1            | 0.8     | 57.5                      | -0.1          | (\$9)   |
|                           | Pioneer       | P9998Q             | 33    | 212.5                   | -5.7              | 30%          | 15.8            | 1.3     | 57.7                      | 0.7           | (\$12)  |



# WE ENGINEER THE SEEDS. NOT THE NUMBERS.

2020 Corn Performance  
MN, ND, SD On-Farm Strips as of November 9, 2020

| Pioneer® Hybrid/ Brand | Comp Brand | Comp Hybrid/ Brand | # Cmp | Prim Yield (bu/a) | Yld Adv (bu/a) | Yld %Wins | Prim Mst (%) | Mst Adv | Prim Tst Wt (lb/bu) | Tst Wt Adv | AGI Adv |
|------------------------|------------|--------------------|-------|-------------------|----------------|-----------|--------------|---------|---------------------|------------|---------|
| P9608AM                | DeKalb     | DKC42-05RIB        | 5     | 217.6             | 11.5           | 80%       | 16.4         | -0.6    | 59.2                | 2.0        | \$34    |
|                        | DeKalb     | DKC44-80RIB        | 8     | 211.2             | -4.5           | 38%       | 15.4         | -0.2    | 59.1                | 2.2        | (\$16)  |
|                        | DeKalb     | DKC47-54RIB        | 7     | 209.2             | 2.8            | 71%       | 15.3         | 0.7     | 58.5                | 1.6        | \$15    |
|                        | Pioneer    | P9211AM            | 24    | 183.3             | -1.5           | 50%       | 16.3         | -1.0    | 58.0                | 1.3        | (\$10)  |
|                        | Pioneer    | P9301AM            | 25    | 183.2             | -2.7           | 40%       | 16.3         | -0.7    | 58.0                | -0.2       | (\$13)  |
|                        | Pioneer    | P9492AM            | 42    | 192.7             | -7.3           | 19%       | 16.0         | -0.6    | 58.2                | 1.2        | (\$28)  |
|                        | Pioneer    | P9772AM            | 34    | 190.3             | -8.1           | 21%       | 15.6         | 0.7     | 58.3                | 2.2        | (\$23)  |
|                        | Pioneer    | P9880AM            | 33    | 191.4             | -10.0          | 15%       | 15.3         | 1.5     | 58.5                | 1.8        | (\$25)  |
|                        | Pioneer    | P9998AM            | 26    | 189.0             | 0.1            | 50%       | 15.6         | 1.6     | 58.4                | 1.0        | \$10    |
| P9608Q                 | DeKalb     | DKC42-05RIB        | 5     | 215.0             | -4.1           | 20%       | 18.7         | -1.7    | 57.4                | 0.1        | (\$28)  |
|                        | DeKalb     | DKC44-80RIB        | 11    | 213.4             | -12.5          | 9%        | 17.9         | 0.1     | 58.0                | 2.3        | (\$41)  |
|                        | DeKalb     | DKC47-54RIB        | 11    | 203.5             | -4.5           | 45%       | 15.7         | 1.7     | 58.6                | 0.7        | (\$5)   |
|                        | Pioneer    | P9188AM            | 28    | 213.5             | 3.8            | 64%       | 18.1         | -1.2    | 57.8                | 0.1        | \$3     |
|                        | Pioneer    | P9211AM            | 27    | 214.2             | -2.4           | 37%       | 17.9         | -0.4    | 58.0                | 0.9        | (\$11)  |
|                        | Pioneer    | P9211Q             | 17    | 209.5             | 3.8            | 59%       | 14.9         | -0.7    | 58.5                | 1.2        | \$9     |
|                        | Pioneer    | P9301AM            | 33    | 214.0             | -2.6           | 45%       | 17.7         | -0.6    | 57.8                | -0.9       | (\$14)  |
|                        | Pioneer    | P9301Q             | 5     | 219.1             | -3.3           | 40%       | 18.9         | -0.1    | 58.1                | -0.5       | (\$12)  |
|                        | Pioneer    | P9492AM            | 41    | 212.2             | -3.8           | 37%       | 17.1         | -0.3    | 58.0                | 1.1        | (\$16)  |
|                        | Pioneer    | P9551Q             | 36    | 212.7             | -4.9           | 36%       | 16.3         | 0.4     | 58.2                | 1.0        | (\$14)  |
|                        | Pioneer    | P9772AM            | 29    | 210.9             | -12.6          | 10%       | 16.7         | 1.0     | 58.3                | 1.8        | (\$36)  |
|                        | Pioneer    | P9880AMXT          | 24    | 214.7             | -9.9           | 13%       | 15.5         | 1.2     | 58.9                | 1.0        | (\$27)  |
|                        | Pioneer    | P9998Q             | 29    | 211.5             | -8.7           | 24%       | 15.7         | 1.7     | 58.6                | 1.4        | (\$19)  |



# WE ENGINEER THE SEEDS. NOT THE NUMBERS.

2020 Corn Performance  
MN, ND, SD On-Farm Strips as of November 9, 2020

| Pioneer® Hybrid/ Brand | Comp Brand | Comp Hybrid/ Brand | # Cmp | Prim Yield (bu/a) | Yld Adv (bu/a) | Yld %Wins | Prim Mst (%) | Mst Adv | Prim Tst Wt (lb/bu) | Tst Wt Adv | AGI Adv |
|------------------------|------------|--------------------|-------|-------------------|----------------|-----------|--------------|---------|---------------------|------------|---------|
| P9772AM                | Beck's     | 4844V2P            | 5     | 243.2             | 19.3           | 60%       | 18.7         | 0.2     | 56.7                | 0.9        | \$67    |
|                        | Channel    | 197-90VT2PRIB      | 6     | 228.2             | 4.2            | 83%       | 18.2         | -0.9    | 55.5                | -1.9       | \$8     |
|                        | DeKalb     | DKC44-80RIB        | 29    | 215.1             | 2.9            | 55%       | 16.8         | -1.3    | 56.4                | -0.3       | \$2     |
|                        | DeKalb     | DKC45-65RIB        | 6     | 215.2             | 12.7           | 100%      | 15.0         | -0.6    | 58.3                | -0.4       | \$41    |
|                        | DeKalb     | DKC47-54RIB        | 32    | 212.7             | 7.8            | 78%       | 16.5         | 0.2     | 56.6                | -1.2       | \$28    |
|                        | DeKalb     | DKC47-55RIB        | 8     | 222.1             | 6.0            | 88%       | 19.6         | -0.2    | 55.6                | -1.2       | \$18    |
|                        | DeKalb     | DKC49-44RIB        | 51    | 234.9             | 5.6            | 78%       | 17.0         | 0.7     | 56.8                | -0.7       | \$24    |
|                        | DeKalb     | DKC49-45RIB        | 10    | 205.1             | 0.6            | 70%       | 18.1         | 0.0     | 56.3                | -1.0       | \$1     |
|                        | DeKalb     | DKC50-08RIB        | 8     | 223.8             | 4.0            | 75%       | 15.5         | 1.0     | 56.5                | -0.6       | \$21    |
|                        | Pioneer    | P9492AM            | 201   | 216.7             | 5.5            | 70%       | 16.3         | -1.1    | 56.7                | -0.7       | \$12    |
|                        | Pioneer    | P9551Q             | 122   | 215.6             | 5.3            | 65%       | 16.6         | -0.7    | 56.6                | -1.0       | \$13    |
|                        | Pioneer    | P9608AM            | 34    | 198.3             | 8.1            | 79%       | 16.3         | -0.7    | 56.1                | -2.2       | \$23    |
|                        | Pioneer    | P9880AM            | 44    | 199.7             | -1.1           | 43%       | 16.1         | 0.7     | 56.4                | -0.5       | \$0     |
|                        | Pioneer    | P9998AM            | 41    | 193.4             | 4.5            | 63%       | 15.7         | 0.8     | 56.6                | -1.1       | \$20    |
|                        | Pioneer    | P0046AM            | 101   | 210.4             | 2.1            | 50%       | 16.0         | 1.2     | 56.9                | -1.1       | \$15    |
|                        | Pioneer    | P0075AM            | 51    | 206.4             | 0.6            | 37%       | 15.6         | 1.3     | 56.6                | 0.6        | \$11    |
| Pioneer                | P0075Q     | 143                | 227.1 | -3.4              | 34%            | 16.6      | 1.4          | 56.8    | -0.1                | (\$1)      |         |
| P9880AM                | DeKalb     | DKC44-80RIB        | 9     | 216.0             | 1.1            | 44%       | 16.7         | -1.8    | 57.1                | 0.6        | (\$8)   |
|                        | DeKalb     | DKC47-54RIB        | 9     | 215.4             | 11.6           | 78%       | 16.9         | -0.7    | 56.5                | -0.7       | \$36    |
|                        | DeKalb     | DKC51-25RIB        | 10    | 224.7             | 2.3            | 70%       | 16.5         | 0.4     | 57.2                | 0.0        | \$12    |
|                        | Pioneer    | P9492AM            | 45    | 202.7             | 3.8            | 60%       | 16.8         | -1.9    | 56.9                | -0.5       | \$2     |
|                        | Pioneer    | P9551Q             | 36    | 200.5             | 4.9            | 64%       | 16.8         | -1.5    | 56.9                | -0.7       | \$9     |
|                        | Pioneer    | P9608AM            | 33    | 201.4             | 10.0           | 85%       | 16.8         | -1.5    | 56.7                | -1.8       | \$25    |
|                        | Pioneer    | P9772AM            | 44    | 200.7             | 1.1            | 57%       | 16.9         | -0.7    | 56.9                | 0.5        | (\$0)   |
|                        | Pioneer    | P9998AM            | 26    | 200.3             | 10.7           | 81%       | 16.9         | 0.0     | 56.8                | -0.6       | \$37    |
|                        | Pioneer    | P0046AM            | 31    | 210.4             | 7.4            | 58%       | 16.1         | 0.5     | 57.4                | -0.2       | \$31    |
|                        | Pioneer    | P0075AM            | 23    | 207.9             | 10.7           | 57%       | 16.9         | 0.6     | 56.9                | 1.8        | \$44    |
|                        | Pioneer    | P0220AM            | 31    | 203.9             | 9.2            | 55%       | 16.5         | 1.1     | 57.1                | 0.9        | \$41    |
|                        | Pioneer    | P0306AM            | 30    | 209.1             | 9.2            | 57%       | 16.1         | 1.9     | 57.6                | -0.1       | \$39    |



# WE ENGINEER THE SEEDS. NOT THE NUMBERS.

2020 Corn Performance  
MN, ND, SD On-Farm Strips as of November 9, 2020

| Pioneer® Hybrid/ Brand | Comp Brand | Comp Hybrid/ Brand | # Cmp | Prim Yield (bu/a) | Yld Adv (bu/a) | Yld %Wins | Prim Mst (%) | Mst Adv | Prim Tst Wt (lb/bu) | Tst Wt Adv | AGI Adv |
|------------------------|------------|--------------------|-------|-------------------|----------------|-----------|--------------|---------|---------------------|------------|---------|
| P9880AMXT              | DeKalb     | DKC47-54RIB        | 23    | 216.1             | 7.5            | 70%       | 17.4         | 0.2     | 57.6                | -0.2       | \$26    |
|                        | DeKalb     | DKC49-44RIB        | 94    | 232.7             | 3.5            | 66%       | 17.8         | 0.5     | 57.6                | 0.4        | \$16    |
|                        | DeKalb     | DKC50-08RIB        | 9     | 223.2             | 3.3            | 56%       | 16.6         | 0.7     | 56.3                | -0.4       | \$16    |
|                        | DeKalb     | DKC51-38RIB        | 7     | 216.2             | 13.1           | 86%       | 18.3         | 0.5     | 58.5                | 1.8        | \$48    |
|                        | Pioneer    | P9551Q             | 72    | 224.8             | 4.3            | 65%       | 17.0         | -0.8    | 57.6                | 0.1        | \$9     |
|                        | Pioneer    | P9608Q             | 24    | 224.7             | 9.9            | 88%       | 16.7         | -1.2    | 57.9                | -1.0       | \$27    |
|                        | Pioneer    | P9998Q             | 42    | 224.4             | -2.3           | 40%       | 17.5         | 0.5     | 57.6                | 0.5        | (\$5)   |
|                        | Pioneer    | P0046AM            | 34    | 222.8             | 0.5            | 53%       | 17.9         | 1.1     | 57.4                | -0.5       | \$10    |
|                        | Pioneer    | P0075Q             | 183   | 226.7             | -8.1           | 19%       | 17.2         | 1.2     | 57.6                | 0.9        | (\$18)  |
| P9998AM                | DeKalb     | DKC47-54RIB        | 6     | 212.3             | 0.0            | 50%       | 16.7         | -0.9    | 57.0                | 0.0        | (\$5)   |
|                        | DeKalb     | DKC51-25RIB        | 12    | 208.0             | -3.5           | 25%       | 16.2         | 0.2     | 57.3                | 0.3        | (\$10)  |
|                        | Pioneer    | P9551Q             | 29    | 186.2             | -3.8           | 34%       | 16.7         | -1.4    | 57.7                | 0.2        | (\$21)  |
|                        | Pioneer    | P9608AM            | 26    | 188.9             | -0.1           | 50%       | 17.1         | -1.6    | 57.3                | -1.0       | (\$10)  |
|                        | Pioneer    | P9772AM            | 41    | 188.9             | -4.5           | 37%       | 16.5         | -0.8    | 57.6                | 1.1        | (\$20)  |
|                        | Pioneer    | P9880AM            | 26    | 189.6             | -10.7          | 19%       | 17.0         | 0.0     | 57.4                | 0.6        | (\$37)  |
|                        | Pioneer    | P0046AM            | 43    | 195.5             | -5.6           | 14%       | 15.7         | 0.3     | 58.2                | 0.1        | (\$16)  |
|                        | Pioneer    | P0075AM            | 33    | 193.6             | -2.5           | 33%       | 15.3         | 0.6     | 58.5                | 2.1        | (\$4)   |
|                        | Pioneer    | P0220AM            | 39    | 191.3             | -4.1           | 28%       | 15.5         | 1.0     | 58.4                | 1.4        | (\$7)   |
| P9998Q                 | DeKalb     | DKC47-54RIB        | 13    | 212.1             | 5.4            | 69%       | 17.3         | -0.2    | 56.9                | -1.1       | \$18    |
|                        | DeKalb     | DKC49-44RIB        | 7     | 245.8             | 3.6            | 86%       | 21.1         | 0.1     | 56.5                | -0.5       | \$12    |
|                        | DeKalb     | DKC51-25RIB        | 5     | 210.2             | -6.3           | %         | 16.1         | 0.4     | 57.1                | -0.9       | (\$18)  |
|                        | Pioneer    | P9551Q             | 33    | 218.2             | 5.7            | 70%       | 17.1         | -1.3    | 57.1                | -0.7       | \$12    |
|                        | Pioneer    | P9608Q             | 29    | 220.2             | 8.7            | 72%       | 17.5         | -1.7    | 57.2                | -1.4       | \$19    |
|                        | Pioneer    | P9880AMXT          | 42    | 226.7             | 2.3            | 60%       | 18.0         | -0.5    | 57.1                | -0.5       | \$5     |
|                        | Pioneer    | P0075Q             | 45    | 220.9             | 0.3            | 44%       | 17.2         | 0.9     | 57.5                | 0.4        | \$8     |
|                        | Pioneer    | P0220Q             | 32    | 217.2             | -5.2           | 34%       | 16.7         | 0.8     | 57.4                | 1.0        | (\$12)  |
|                        | Pioneer    | P0306Q             | 29    | 216.8             | 0.3            | 48%       | 16.6         | 1.0     | 57.5                | -0.3       | \$8     |
|                        | Pioneer    | P0421Q             | 33    | 220.0             | -3.5           | 39%       | 16.8         | 0.9     | 57.4                | -0.2       | (\$6)   |



# WE ENGINEER THE SEEDS. NOT THE NUMBERS.

2020 Corn Performance  
MN, ND, SD On-Farm Strips as of November 9, 2020

| Pioneer® Hybrid/ Brand | Comp Brand | Comp Hybrid/ Brand | # Cmp | Prim Yield (bu/a) | Yld Adv (bu/a) | Yld %Wins | Prim Mst (%) | Mst Adv | Prim Tst Wt (lb/bu) | Tst Wt Adv | AGI Adv |
|------------------------|------------|--------------------|-------|-------------------|----------------|-----------|--------------|---------|---------------------|------------|---------|
| P0220AM                | DeKalb     | DKC51-25RIB        | 13    | 218.7             | 3.9            | 77%       | 17.1         | -1.2    | 57.4                | -0.6       | \$7     |
|                        | DeKalb     | DKC51-38RIB        | 5     | 213.8             | 22.8           | 100%      | 16.7         | -0.4    | 56.4                | 0.1        | \$75    |
|                        | DeKalb     | DKC51-40RIB        | 5     | 231.9             | 4.2            | 80%       | 18.8         | -3.7    | 58.0                | -0.9       | (\$14)  |
|                        | Pioneer    | P9998AM            | 39    | 195.3             | 4.1            | 72%       | 16.5         | -1.0    | 57.0                | -1.4       | \$7     |
|                        | Pioneer    | P0046AM            | 56    | 200.7             | -2.7           | 38%       | 16.2         | -0.6    | 57.3                | -1.3       | (\$13)  |
|                        | Pioneer    | P0075AM            | 54    | 201.5             | -3.7           | 39%       | 16.5         | -0.5    | 57.2                | 0.6        | (\$16)  |
|                        | Pioneer    | P0220Q             | 5     | 226.2             | 5.1            | 40%       | 17.2         | -0.4    | 58.9                | 0.2        | \$14    |
|                        | Pioneer    | P0306AM            | 48    | 204.3             | -0.3           | 50%       | 16.3         | 0.6     | 57.3                | -0.7       | (\$2)   |
| P0220Q                 | DeKalb     | DKC49-44RIB        | 85    | 238.9             | 9.7            | 86%       | 18.9         | -1.2    | 55.9                | -1.4       | \$22    |
|                        | DeKalb     | DKC49-45RIB        | 5     | 218.8             | 8.2            | 100%      | 19.5         | -2.2    | 56.1                | -1.3       | \$9     |
|                        | DeKalb     | DKC50-08RIB        | 11    | 234.4             | 12.2           | 82%       | 17.2         | -0.7    | 56.4                | -0.4       | \$36    |
|                        | DeKalb     | DKC51-25RIB        | 6     | 221.3             | 3.7            | 83%       | 16.4         | -0.3    | 57.5                | -1.1       | \$11    |
|                        | DeKalb     | DKC51-38RIB        | 8     | 224.9             | 23.3           | 100%      | 19.6         | -1.0    | 56.8                | -0.2       | \$69    |
|                        | DeKalb     | DKC52-34RIB        | 20    | 234.9             | 16.0           | 90%       | 17.9         | -1.0    | 55.7                | -1.7       | \$46    |
|                        | DeKalb     | DKC52-35RIB        | 5     | 231.5             | 10.2           | 100%      | 18.4         | -0.9    | 56.3                | -1.9       | \$26    |
|                        | DeKalb     | DKC54-38RIB        | 99    | 239.2             | 4.0            | 64%       | 18.8         | -0.8    | 55.8                | -1.7       | \$7     |
|                        | Pioneer    | P9880AMXT          | 165   | 234.5             | 7.1            | 76%       | 18.6         | -1.5    | 56.0                | -1.8       | \$12    |
|                        | Pioneer    | P9998Q             | 32    | 222.3             | 5.2            | 66%       | 17.5         | -0.8    | 56.5                | -1.0       | \$12    |
|                        | Pioneer    | P0075Q             | 211   | 232.5             | -1.2           | 45%       | 18.0         | -0.4    | 56.1                | -0.9       | (\$7)   |
|                        | Pioneer    | P0157AMXT          | 15    | 225.8             | 2.6            | 60%       | 16.9         | 0.1     | 56.8                | -1.7       | \$10    |
|                        | Pioneer    | P0220AM            | 5     | 221.1             | -5.1           | 40%       | 16.8         | 0.4     | 58.7                | -0.2       | (\$14)  |
|                        | Pioneer    | P0306Q             | 199   | 232.7             | 2.3            | 58%       | 18.0         | -0.3    | 56.1                | -1.3       | \$5     |
|                        | Pioneer    | P0421Q             | 212   | 231.9             | -1.4           | 46%       | 18.0         | -0.1    | 56.1                | -1.3       | (\$5)   |
|                        | Pioneer    | P0507Q             | 202   | 232.8             | -2.0           | 41%       | 18.0         | 1.4     | 56.1                | -0.5       | \$6     |
|                        | Pioneer    | P0589AMXT          | 92    | 233.7             | 4.6            | 65%       | 17.5         | 0.9     | 56.3                | -1.4       | \$24    |
|                        | Pioneer    | P0622Q             | 89    | 231.1             | 0.7            | 52%       | 17.3         | 1.2     | 56.6                | -1.1       | \$13    |
| Pioneer                | P0688Q     | 193                | 233.0 | 1.7               | 54%            | 18.1      | 1.5          | 56.1    | -1.0                | \$19       |         |





# WE ENGINEER THE SEEDS. NOT THE NUMBERS.

2020 Corn Performance  
MN, ND, SD On-Farm Strips as of November 9, 2020

| Pioneer® Hybrid/ Brand | Comp Brand | Comp Hybrid/ Brand | # Cmp | Prim Yield (bu/a) | Yld Adv (bu/a) | Yld %Wins | Prim Mst (%) | Mst Adv | Prim Tst Wt (lb/bu) | Tst Wt Adv | AGI Adv |
|------------------------|------------|--------------------|-------|-------------------|----------------|-----------|--------------|---------|---------------------|------------|---------|
| P0306AM                | DeKalb     | DKC51-25RIB        | 10    | 219.1             | 2.1            | 70%       | 16.4         | -0.1    | 57.8                | 0.8        | \$8     |
|                        | Pioneer    | P9998AM            | 33    | 202.8             | 3.3            | 76%       | 16.9         | -1.7    | 58.1                | -0.6       | \$5     |
|                        | Pioneer    | P0046AM            | 49    | 206.2             | -1.1           | 43%       | 16.9         | -1.0    | 58.2                | -0.3       | (\$6)   |
|                        | Pioneer    | P0075AM            | 43    | 205.3             | -1.8           | 44%       | 17.3         | -0.9    | 57.7                | 1.5        | (\$7)   |
|                        | Pioneer    | P0220AM            | 48    | 204.6             | 0.3            | 50%       | 16.9         | -0.6    | 58.1                | 0.7        | \$2     |
|                        | Pioneer    | P0306Q             | 5     | 242.5             | -2.6           | 60%       | 17.1         | 0.2     | 57.3                | 0.3        | (\$7)   |
|                        | Pioneer    | P0421AM            | 35    | 202.4             | -10.1          | 20%       | 15.5         | 0.5     | 59.1                | 2.0        | (\$32)  |
|                        | Pioneer    | P0507AM            | 27    | 209.4             | -1.1           | 41%       | 15.1         | 1.4     | 59.5                | 2.0        | \$4     |
|                        | Pioneer    | P0589AM            | 21    | 210.2             | -1.7           | 48%       | 15.0         | 0.9     | 59.5                | 0.8        | (\$0)   |
|                        | Pioneer    | P0622Q             | 16    | 203.9             | -8.2           | 19%       | 15.2         | 1.0     | 59.5                | 0.4        | (\$23)  |
|                        | Pioneer    | P0688AM            | 24    | 207.6             | -3.3           | 29%       | 15.1         | 1.2     | 59.5                | 0.6        | (\$5)   |
| P0306Q                 | DeKalb     | DKC49-44RIB        | 88    | 238.7             | 10.5           | 89%       | 18.5         | -0.7    | 57.2                | -0.2       | \$29    |
|                        | DeKalb     | DKC50-08RIB        | 10    | 229.0             | 12.5           | 90%       | 17.7         | -1.0    | 57.2                | 0.1        | \$35    |
|                        | DeKalb     | DKC51-25RIB        | 5     | 221.6             | -0.7           | 60%       | 17.4         | -0.1    | 57.7                | 0.6        | (\$2)   |
|                        | DeKalb     | DKC51-38RIB        | 10    | 217.0             | 13.7           | 80%       | 19.1         | -1.0    | 58.1                | 1.1        | \$37    |
|                        | DeKalb     | DKC52-34RIB        | 20    | 234.6             | 15.7           | 95%       | 18.1         | -0.7    | 56.9                | -0.2       | \$48    |
|                        | DeKalb     | DKC54-38RIB        | 99    | 238.3             | 3.4            | 64%       | 18.5         | -0.3    | 57.2                | -0.3       | \$9     |
|                        | DeKalb     | DKC54-64RIB        | 13    | 238.4             | 4.7            | 62%       | 17.7         | 0.0     | 57.5                | 0.8        | \$15    |
|                        | DeKalb     | DKC55-53RIB        | 10    | 242.2             | 3.1            | 70%       | 17.1         | 0.7     | 57.7                | 0.7        | \$17    |
|                        | DeKalb     | DKC58-34RIB        | 11    | 225.4             | 0.3            | 55%       | 16.4         | 1.9     | 58.2                | 0.4        | \$17    |
|                        | Pioneer    | P9880AMXT          | 165   | 232.2             | 5.5            | 73%       | 18.3         | -1.2    | 57.3                | -0.5       | \$9     |
|                        | Pioneer    | P9998Q             | 29    | 216.6             | -0.3           | 52%       | 17.6         | -1.0    | 57.7                | 0.3        | (\$8)   |
|                        | Pioneer    | P0075Q             | 209   | 229.9             | -3.8           | 41%       | 17.8         | -0.1    | 57.4                | 0.4        | (\$14)  |
|                        | Pioneer    | P0220Q             | 199   | 230.4             | -2.3           | 41%       | 17.7         | 0.3     | 57.4                | 1.3        | (\$5)   |
|                        | Pioneer    | P0306AM            | 5     | 245.1             | 2.6            | 40%       | 17.3         | -0.2    | 57.0                | -0.3       | \$7     |
|                        | Pioneer    | P0421Q             | 208   | 230.1             | -3.4           | 38%       | 17.7         | 0.2     | 57.4                | 0.1        | (\$9)   |
|                        | Pioneer    | P0507Q             | 196   | 231.2             | -4.9           | 31%       | 17.7         | 1.7     | 57.5                | 0.8        | (\$1)   |
|                        | Pioneer    | P0589AMXT          | 94    | 228.0             | 1.5            | 53%       | 17.2         | 1.2     | 57.7                | -0.2       | \$16    |
|                        | Pioneer    | P0622Q             | 86    | 228.8             | -2.1           | 40%       | 16.8         | 1.6     | 58.0                | 0.2        | \$7     |
| Pioneer                | P0688Q     | 196                | 230.4 | -0.4              | 49%            | 17.7      | 1.8          | 57.5    | 0.4                 | \$15       |         |



# WE ENGINEER THE SEEDS. NOT THE NUMBERS.

2020 Corn Performance  
MN, ND, SD On-Farm Strips as of November 9, 2020

| Pioneer®<br>Hybrid/ Brand | Comp<br>Brand | Comp Hybrid/ Brand | # Cmp | Prim Yield<br>(bu/a) | Yld Adv<br>(bu/a) | Yld<br>%Wins | Prim Mst<br>(%) | Mst Adv | Prim Tst<br>Wt<br>(lb/bu) | Tst Wt<br>Adv | AGI Adv |
|---------------------------|---------------|--------------------|-------|----------------------|-------------------|--------------|-----------------|---------|---------------------------|---------------|---------|
| P0421AM                   | DeKalb        | DKC51-25RIB        | 9     | 227.1                | 17.7              | 100%         | 15.6            | -0.9    | 56.7                      | -2.1          | \$55    |
|                           | DeKalb        | DKC54-40RIB        | 6     | 235.5                | 13.8              | 100%         | 18.5            | -1.5    | 56.1                      | -1.5          | \$33    |
|                           | Pioneer       | P0046AM            | 43    | 213.2                | 8.6               | 77%          | 15.5            | -0.6    | 57.4                      | -2.2          | \$26    |
|                           | Pioneer       | P0075AM            | 40    | 212.5                | 6.1               | 65%          | 16.0            | -0.4    | 57.1                      | -0.3          | \$18    |
|                           | Pioneer       | P0220AM            | 46    | 214.9                | 9.0               | 76%          | 15.9            | 0.0     | 57.3                      | -1.0          | \$31    |
|                           | Pioneer       | P0306AM            | 35    | 212.5                | 10.1              | 80%          | 16.0            | -0.5    | 57.1                      | -2.0          | \$32    |
|                           | Pioneer       | P0421Q             | 6     | 229.9                | -0.2              | 50%          | 16.9            | -0.3    | 56.7                      | -2.1          | (\$3)   |
|                           | Pioneer       | P0507AM            | 39    | 214.5                | 8.3               | 77%          | 15.3            | 1.0     | 57.9                      | -0.1          | \$35    |
|                           | Pioneer       | P0589AM            | 27    | 215.4                | 4.7               | 63%          | 15.2            | 0.3     | 57.4                      | -1.4          | \$18    |
|                           | Pioneer       | P0622Q             | 23    | 214.6                | 1.2               | 57%          | 15.3            | 0.9     | 57.8                      | -1.2          | \$9     |
|                           | Pioneer       | P0688AM            | 36    | 220.0                | 4.6               | 67%          | 15.4            | 0.8     | 57.8                      | -0.9          | \$20    |
| P0421Q                    | DeKalb        | DKC51-38RIB        | 10    | 217.0                | 14.9              | 100%         | 19.2            | -1.2    | 58.1                      | 1.2           | \$40    |
|                           | DeKalb        | DKC52-34RIB        | 26    | 232.8                | 14.7              | 92%          | 18.4            | -0.8    | 57.3                      | 0.0           | \$42    |
|                           | DeKalb        | DKC54-38RIB        | 106   | 242.3                | 8.8               | 82%          | 18.7            | -0.6    | 57.2                      | -0.3          | \$24    |
|                           | DeKalb        | DKC54-40RIB        | 5     | 230.0                | -4.4              | 20%          | 16.8            | -0.7    | 58.6                      | 0.2           | (\$22)  |
|                           | DeKalb        | DKC54-64RIB        | 25    | 236.7                | 4.8               | 60%          | 18.2            | 0.0     | 57.2                      | 1.0           | \$15    |
|                           | DeKalb        | DKC55-53RIB        | 12    | 241.0                | -0.3              | 50%          | 18.5            | 0.4     | 56.2                      | 0.1           | \$2     |
|                           | DeKalb        | DKC58-34RIB        | 14    | 227.0                | -0.7              | 50%          | 17.7            | 2.2     | 56.7                      | 0.0           | \$17    |
|                           | Pioneer       | P9998Q             | 33    | 223.6                | 3.5               | 61%          | 17.6            | -0.9    | 57.5                      | 0.2           | \$6     |
|                           | Pioneer       | P0075Q             | 217   | 234.1                | 0.1               | 47%          | 18.1            | -0.3    | 57.4                      | 0.4           | (\$3)   |
|                           | Pioneer       | P0157AMXT          | 16    | 230.6                | 3.9               | 63%          | 17.4            | 0.1     | 57.6                      | -0.7          | \$14    |
|                           | Pioneer       | P0220Q             | 212   | 233.4                | 1.4               | 53%          | 17.9            | 0.1     | 57.4                      | 1.3           | \$5     |
|                           | Pioneer       | P0306Q             | 208   | 233.5                | 3.4               | 61%          | 18.0            | -0.2    | 57.4                      | -0.1          | \$9     |
|                           | Pioneer       | P0421AM            | 6     | 230.0                | 0.2               | 33%          | 16.7            | 0.3     | 58.9                      | 2.1           | \$3     |
|                           | Pioneer       | P0507Q             | 208   | 233.6                | -1.1              | 38%          | 17.8            | 1.5     | 57.5                      | 0.8           | \$9     |
|                           | Pioneer       | P0589AMXT          | 95    | 231.3                | 3.4               | 59%          | 17.3            | 1.0     | 57.6                      | -0.1          | \$20    |
|                           | Pioneer       | P0622Q             | 90    | 229.5                | -2.0              | 38%          | 17.1            | 1.3     | 58.0                      | 0.4           | \$5     |
|                           | Pioneer       | P0688Q             | 205   | 234.2                | 2.9               | 56%          | 18.0            | 1.6     | 57.4                      | 0.3           | \$23    |

# WE ENGINEER THE SEEDS. NOT THE NUMBERS.



| PLOT NAME     | LOCATION                | IRRIGATION    | TILLAGE      |
|---------------|-------------------------|---------------|--------------|
| Robert Ehlers | South of Elbow Lake, MN | Non-Irrigated | Conventional |
| PLANTING DATE | HARVEST DATE            | PREVIOUS CROP | ROW WIDTH    |
| 4-22-20       | 10-3-20                 | Soybeans      | 22"          |

| Entry #  | Brand          | Hybrid/Brand  | RM        | Yield (bu/a 56#) | Mst (%)     | Tst Wt (lb/bu) | AGI           | Yield Rank |
|----------|----------------|---------------|-----------|------------------|-------------|----------------|---------------|------------|
| 1        | Pioneer        | P8989AM       | 89        | 207.6            | 19.1        | 57.1           | 588.75        | 13         |
| 2        | Pioneer        | P9188AM       | 91        | 208.0            | 18.8        | 56.1           | 592.67        | 12         |
| 3        | Pioneer        | P9211AM       | 92        | 203.2            | 19.4        | 57.7           | 573.84        | 15         |
| 4        | Pioneer        | P9301AM       | 93        | 213.0            | 19.0        | 57.8           | 604.92        | 9          |
| 5        | Dekalb         | DKC42-05RIB   | 92        | 211.0            | 19.3        | 56.4           | 596.71        | 10         |
| 6        | Pioneer        | P9492AM       | 94        | 216.4            | 20.9        | 54.6           | 598.13        | 6          |
| <b>7</b> | <b>Pioneer</b> | <b>P9551Q</b> | <b>95</b> | <b>225.0</b>     | <b>20.6</b> | <b>55.6</b>    | <b>625.16</b> | <b>1</b>   |
| 8        | Pioneer        | P9608Q        | 96        | 208.9            | 24.4        | 54.1           | 548.15        | 11         |
| 9        | Pioneer        | P9772AM       | 97        | 216.2            | 25.5        | 53.5           | 557.80        | 7          |
| 10       | Pioneer        | P9880AMXT     | 98        | 222.0            | 27.0        | 54.2           | 560.45        | 5          |
| 11       | Pioneer        | P0046AM       | 100       | 224.0            | 26.5        | 54.8           | 568.96        | 2          |
| 12       | Pioneer        | P9998Q        | 99        | 214.7            | 25.6        | 53.9           | 553.07        | 8          |
| 13       | Pioneer        | P0220Q        | 102       | 223.3            | 24.8        | 52.9           | 582.37        | 4          |
| 14       | Pioneer        | P0075Q        | 100       | 222.0            | 27.7        | 54.2           | 554.22        | 5          |
| 15       | Pioneer        | P0306Q        | 103       | 201.0            | 27.5        | 53.5           | 502.50        | 16         |
| 16       | Pioneer        | P0421Q        | 104       | 223.4            | 26.2        | 53.8           | 570.12        | 3          |
| 17       | Dekalb         | DKC47-54RIB   | 97        | 204              | 27.9        | 54.8           | 506.74        | 14         |

Total Precip: 18.8 in  
GDU: 2533



# WE ENGINEER THE SEEDS. NOT THE NUMBERS.



| PLOT NAME     | LOCATION             | IRRIGATION    | TILLAGE      |
|---------------|----------------------|---------------|--------------|
| Brutlag Farms | South of Wendell, MN | Non-Irrigated | Conventional |
| PLANTING DATE | HARVEST DATE         | PREVIOUS CROP | ROW WIDTH    |
| 05-03-20      | 10-30-20             | Sugarbeats    | 22"          |

| Entry #   | Brand          | Hybrid/Brand   | RM         | Yield (bu/a 56#) | Mst (%)     | Tst Wt (lb/bu) | AGI             | Yield Rank |
|-----------|----------------|----------------|------------|------------------|-------------|----------------|-----------------|------------|
| 1         | Pioneer        | P9211AM        | 92         | 207.4            | 16.2        | 57.9           | \$819.64        | 9          |
| 2         | Pioneer        | P9301AM        | 93         | 219.5            | 16.1        | 60.3           | \$868.34        | 3          |
| <b>3</b>  | <b>Pioneer</b> | <b>P9492AM</b> | <b>94</b>  | <b>209.5</b>     | <b>15.7</b> | <b>58</b>      | <b>\$832.13</b> | <b>6</b>   |
| <b>4</b>  | <b>Pioneer</b> | <b>P9551Q</b>  | <b>95</b>  | <b>213.9</b>     | <b>17</b>   | <b>58.9</b>    | <b>\$838.49</b> | <b>5</b>   |
| 5         | Pioneer        | P9608AM        | 96         | 208.4            | 15.6        | 59.6           | \$828.60        | 7          |
| <b>6</b>  | <b>Pioneer</b> | <b>P9880AM</b> | <b>98</b>  | <b>214.7</b>     | <b>16.7</b> | <b>57.8</b>    | <b>\$844.20</b> | <b>4</b>   |
| 7         | Pioneer        | P9998AM        | 99         | 208              | 16.9        | 58.9           | \$816.19        | 8          |
| <b>8</b>  | <b>Pioneer</b> | <b>P0220AM</b> | <b>102</b> | <b>223.8</b>     | <b>17.9</b> | <b>58.5</b>    | <b>\$869.24</b> | <b>2</b>   |
| 9         | Pioneer        | P0306AM        | 103        | 187.2            | 17.8        | 58.6           | \$727.83        | 10         |
| <b>10</b> | <b>Pioneer</b> | <b>P0421Q</b>  | <b>104</b> | <b>232.7</b>     | <b>17.8</b> | <b>58.5</b>    | <b>\$904.74</b> | <b>1</b>   |

Total Precip: 18.3 in  
GDU's: 2462



# WE ENGINEER THE SEEDS. NOT THE NUMBERS.



| PLOT NAME     | LOCATION           | IRRIGATION    | TILLAGE      |
|---------------|--------------------|---------------|--------------|
| Brent Johnson | Douglas County, MN | Non-Irrigated | Conventional |
| PLANTING DATE | HARVEST DATE       | PREVIOUS CROP | ROW WIDTH    |
| 4/30/20       | 11/5/20            | Soybeans      | 22"          |

| Entry # | Brand          | Hybrid/Brand     | RM         | Yield (bu/a 56#) | Mst (%)     | Tst Wt (lb/bu) | AGI        | Yield Rank |
|---------|----------------|------------------|------------|------------------|-------------|----------------|------------|------------|
| 1       | Dekalb         | DKC47-54RIB      | 97         | 238.5            | 16          | 56.7           | 944        | 1          |
| 2       | Pioneer        | P9211Q           | 92         | 210.6            | 14.9        | 55.5           | 842        | 10         |
| 3       | Pioneer        | P9301AM          | 93         | 210.8            | 15.2        | 58.6           | 841        | 9          |
| 4       | <b>Pioneer</b> | <b>P9492AM</b>   | <b>94</b>  | <b>218.4</b>     | <b>15.3</b> | <b>55.8</b>    | <b>870</b> | <b>8</b>   |
| 5       | <b>Pioneer</b> | <b>P9551Q</b>    | <b>95</b>  | <b>229.8</b>     | <b>16.6</b> | <b>56.8</b>    | <b>904</b> | <b>4</b>   |
| 6       | Pioneer        | P9608Q           | 96         | 204.3            | 15.3        | 58.6           | 814        | 12         |
| 7       | Pioneer        | P9772AM          | 97         | 210.2            | 16.8        | 55.6           | 825        | 11         |
| 8       | <b>Pioneer</b> | <b>P9880AMXT</b> | <b>98</b>  | <b>228.1</b>     | <b>16.6</b> | <b>57.2</b>    | <b>897</b> | <b>6</b>   |
| 9       | <b>Pioneer</b> | <b>P9998Q</b>    | <b>99</b>  | <b>235.4</b>     | <b>17.7</b> | <b>55.6</b>    | <b>916</b> | <b>2</b>   |
| 10      | Pioneer        | P0220Q           | 102        | 228.3            | 18.1        | 55.4           | 884        | 5          |
| 11      | Pioneer        | P0306Q           | 103        | 225.1            | 18.3        | 55.7           | 870        | 7          |
| 12      | <b>Pioneer</b> | <b>P0421Q</b>    | <b>104</b> | <b>232.5</b>     | <b>18.4</b> | <b>54.9</b>    | <b>898</b> | <b>3</b>   |

Precip: 21.1in  
GDU: 2638



# WE ENGINEER THE SEEDS. NOT THE NUMBERS.



| PLOT NAME      | LOCATION     | IRRIGATION    | TILLAGE      |
|----------------|--------------|---------------|--------------|
| Bob Thormodson | Dalton, MN   | Non-Irrigated | Conventional |
| PLANTING DATE  | HARVEST DATE | PREVIOUS CROP | ROW WIDTH    |
| 04-26-20       | 10-13-20     | Soybeans      | 30"          |

| Entry #  | Brand          | Hybrid/Brand   | RM        | Yield (bu/a 56#) | Mst (%)   | Tst Wt (lb/bu) | AGI           | Yield Rank |
|----------|----------------|----------------|-----------|------------------|-----------|----------------|---------------|------------|
| 1        | Dekalb         | DKC43-75RIB    | 93        | 223.1            | 16.3      | 58.6           | 880.80        | 2          |
| 2        | Pioneer        | P8989AM        | 89        | 211.5            | 16.4      | 59             | 834.16        | 9          |
| <b>3</b> | <b>Pioneer</b> | <b>P9188AM</b> | <b>91</b> | <b>217.3</b>     | <b>17</b> | <b>57.6</b>    | <b>851.82</b> | <b>6</b>   |
| 4        | Pioneer        | P9301AM        | 93        | 220.8            | 17.2      | 58.7           | 863.77        | 4          |
| 5        | Pioneer        | P9211AM        | 92        | 216.2            | 17.4      | 58.7           | 844.04        | 8          |
| 6        | Pioneer        | P9492AM        | 94        | 219.1            | 18.2      | 55.5           | 848.36        | 5          |
| 7        | Pioneer        | P9551Q         | 95        | 232.5            | 17.8      | 58             | 903.96        | 1          |
| 8        | Dekalb         | DKC41-99RIB    | 91        | 216.9            | 17.2      | 57.9           | 848.51        | 7          |
| 9        | Channel        | 192-08VT2PRIB  | 92        | 222.9            | 16.7      | 56.7           | 876.44        | 3          |

Total Precip: 28.7 in  
GDU: 2,531



# WE ENGINEER THE SEEDS. NOT THE NUMBERS.



| PLOT NAME     | LOCATION                | IRRIGATION    | TILLAGE      |
|---------------|-------------------------|---------------|--------------|
| Mark Ehlers   | North of Elbow lake, MN | Non-Irrigated | Conventional |
| PLANTING DATE | HARVEST DATE            | PREVIOUS CROP | ROW WIDTH    |
| 04/27/2020    | 10-14-2020              | Soybeans      | 22"          |

| Entry #  | Brand          | Hybrid/Brand  | RM         | Yield (bu/a 56#) | Mst (%)   | Tst Wt (lb/bu) | AGI           | Yield Rank |
|----------|----------------|---------------|------------|------------------|-----------|----------------|---------------|------------|
| 1        | Pioneer        | P9772AM       | 97         | 230.6            | 18.8      | 57.4           | 887.35        | 3          |
| 2        | Pioneer        | P9880AMXT     | 98         | 211.8            | 18.7      | 58.1           | 815.85        | 8          |
| 3        | Pioneer        | P9998Q        | 99         | 210.7            | 19.9      | 56.4           | 801.50        | 9          |
| 4        | Pioneer        | P0046AM       | 100        | 236              | 20.2      | 56.4           | 894.91        | 2          |
| 5        | Pioneer        | P0075Q        | 100        | 221.2            | 20.1      | 56.5           | 839.68        | 6          |
| 6        | Pioneer        | P0220AM       | 102        | 222.2            | 20.2      | 56.4           | 842.58        | 5          |
| <b>7</b> | <b>Pioneer</b> | <b>P0306Q</b> | <b>103</b> | <b>243.8</b>     | <b>19</b> | <b>57.3</b>    | <b>936.19</b> | <b>1</b>   |
| 8        | Dekalb         | DKC47-54RIB   | 97         | 226.6            | 18.1      | 57.9           | 878.30        | 4          |
| 9        | Pioneer        | P0421Q        | 104        | 216.7            | 18.5      | 55.2           | 836.46        | 7          |

Total Precip: 23 in  
GDU: 2,547



# WE ENGINEER THE SEEDS. NOT THE NUMBERS.

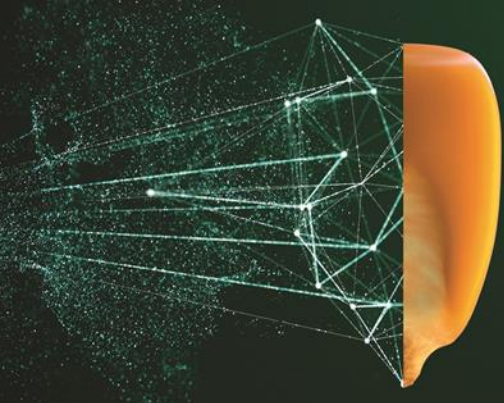


| PLOT NAME     | LOCATION                | IRRIGATION    | TILLAGE      |
|---------------|-------------------------|---------------|--------------|
| Mark Ehlers   | North of Elbow lake, MN | Non-Irrigated | Conventional |
| PLANTING DATE | HARVEST DATE            | PREVIOUS CROP | ROW WIDTH    |
| 04/27/2020    | 10-14-2020              | Soybeans      | 22"          |

| Entry # | Brand   | Hybrid/Brand | RM | Yield (bu/a 56#) | Mst (%) | Tst Wt (lb/bu) | AGI    | Yield Rank |
|---------|---------|--------------|----|------------------|---------|----------------|--------|------------|
| 1       | Pioneer | P8989AM      | 89 | 190.6            | 17.2    | 56.6           | 745.63 | 4          |
| 2       | Pioneer | P9188AM      | 91 | 202.3            | 16.6    | 57.1           | 796.25 | 2          |
| 3       | Pioneer | P9211Q       | 92 | 186.1            | 16.4    | 55.9           | 733.98 | 6          |
| 4       | Dekalb  | DKC42-05RIB  | 92 | 189.9            | 16.8    | 56.3           | 745.93 | 5          |
| 5       | Pioneer | P9301AM      | 93 | 176.7            | 16.6    | 59.0           | 695.49 | 7          |
| 6       | Pioneer | P9492AM      | 94 | 201.5            | 16.8    | 58.4           | 791.95 | 3          |
| 7       | Pioneer | P9608Q       | 96 | 175.5            | 18      | 56.8           | 680.94 | 8          |
| 8       | Pioneer | P9551Q       | 95 | 208.1            | 18.5    | 57.1           | 803.27 | 1          |

Total Precip: 23 in  
GDU: 2547





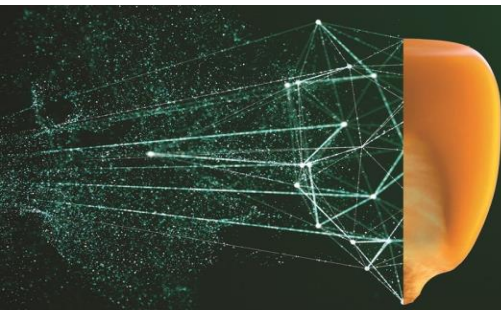
# WE ENGINEER THE SEEDS. NOT THE NUMBERS.



| PLOT NAME     | LOCATION          | IRRIGATION    | TILLAGE      |
|---------------|-------------------|---------------|--------------|
| Robert Ehlers | SW of Wendell, MN | Non-Irrigated | Conventional |
| PLANTING DATE | HARVEST DATE      | PREVIOUS CROP | ROW WIDTH    |
| 05-01-20      | 10-12-20          | Corn          | 22"          |

| Entry # | Brand   | Hybrid/Brand | RM  | Yield (bu/a 56#) | Mst (%) | Tst Wt (lb/bu) | AGI    | Yield Rank |
|---------|---------|--------------|-----|------------------|---------|----------------|--------|------------|
| 1       | Pioneer | P9211Q       | 92  | 181.1            | 15      | 56.1           | 727.2  | 5          |
| 3       | Pioneer | P0157AMXT    | 101 | 150.5            | 18.8    | 56.3           | 579.12 |            |
| 3       | Pioneer | P9301AM      | 93  | 195.1            | 15.4    | 59.7           | 777.28 | 1          |
| 4       | Pioneer | P9492AM      | 94  | 188.5            | 15.2    | 56.7           | 752.49 | 3          |
| 5       | Pioneer | P0157AMXT    | 101 | 158.8            | 18.8    | 58.3           | 609.14 |            |
| 6       | Pioneer | P9551Q       | 95  | 189.5            | 16.5    | 58.1           | 746.63 | 2          |
| 7       | Pioneer | P0220Q       | 102 | 176.7            | 18.3    | 57.1           | 683.48 | 6          |
| 8       | Pioneer | P0157AMXT    | 101 | 168.7            | 18.9    | 58.1           | 648.48 |            |
| 9       | Pioneer | P0421Q       | 104 | 188              | 17.2    | 58.2           | 735.46 | 4          |

Total Precip: 18.8 in  
GDU: 2,554



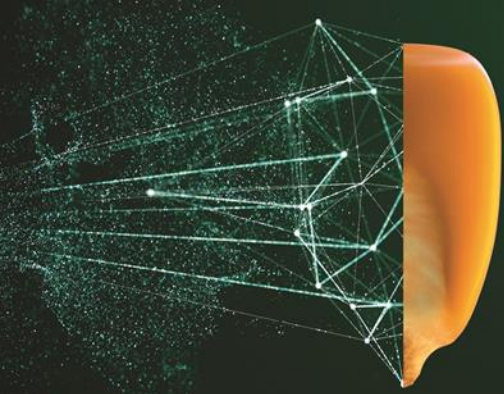
# WE ENGINEER THE SEEDS. NOT THE NUMBERS.



Precip: 20 in  
GDU: 2405

| PLOT NAME     | LOCATION                  | IRRIGATION    | TILLAGE      |
|---------------|---------------------------|---------------|--------------|
| Don Viger     | West Of Ten Mile Lake, MN | Non-Irrigated | Conventional |
| PLANTING DATE | HARVEST DATE              | PREVIOUS CROP | ROW WIDTH    |
| 4/27/20       | 11/4/20                   | Soybeans      | 30"          |

| Entry #   | Brand          | Hybrid/Brand   | RM        | Yield (bu/a 56#) | Mst (%)     | Tst Wt (lb/bu) | AGI           | Yield Rank |
|-----------|----------------|----------------|-----------|------------------|-------------|----------------|---------------|------------|
| 1         | Channel        | 185-30VT2PRIB  | 85        | 199.5            | 15          | 60.3           | 798           | 21         |
| 2         | Peterson       | 74Z87RIB       | 87        | 200.3            | 14.5        | 59.3           | 801.2         | 19         |
| 3         | Channel        | 189-39VT2PRIB  | 89        | 212.4            | 15.3        | 59.6           | 847.05        | 8          |
| 4         | Beck's         | 4026V2P        | 90        | 212.1            | 15.8        | 58.6           | 841.61        | 9          |
| 5         | Peterson       | 72A91          | 91        | 212.4            | 15.6        | 57.6           | 844.5         | 8          |
| 6         | GH             | G91V51-3110A   | 91        | 217.5            | 15.7        | 57.4           | 863.91        | 5          |
| 7         | Dekalb         | DKC41-99RIB    | 91        | 209.1            | 15.6        | 58             | 831.38        | 14         |
| 8         | Beck's         | 4292V2P        | 92        | 218.6            | 16.1        | 56.7           | 864.78        | 3          |
| 9         | Dekalb         | DKC42-05RIB    | 92        | 206.4            | 16.6        | 57.3           | 812.39        | 15         |
| 10        | Pioneer        | P9211AM        | 92        | 204.6            | 16.1        | 57.9           | 809.40        | 16         |
| 11        | Peterson       | 76S92RIB       | 92        | 198.7            | 16.1        | 57.9           | 786.06        | 23         |
| 12        | Channel        | 192-08VT2RIB   | 92        | 203.8            | 16.1        | 56.6           | 806.23        | 17         |
| 13        | Beck's         | 4421AM         | 94        | 216.5            | 16.4        | 58.3           |               | 7          |
| 14        | Dyna-Gro       | D34CC52        | 94        | 210.6            | 17.2        | 58.7           | 823.87        | 11         |
| <b>15</b> | <b>Pioneer</b> | <b>P9492AM</b> | <b>94</b> | <b>223.6</b>     | <b>15.8</b> | <b>58.7</b>    | <b>887.24</b> | <b>2</b>   |
| 16        | GH             | G95M41-5122EZR | 95        | 203.6            | 17.3        | 57.3           | 795.67        | 18         |
| 17        | Peterson       | 76Y96RIB       | 96        | 217.7            | 17.2        | 58.6           | 851.64        | 4          |
| 18        | GH             | G96R61-5222EZR | 96        | 209.9            | 16.9        | 58.7           | 823.65        | 13         |
| 19        | GH             | G97N86-5222EZR | 97        | 199.2            | 16.7        | 56.8           | 783.25        | 22         |
| 20        | Channel        | 197-50VT2PRIB  | 97        | 210.3            | 17.3        | 56.7           | 823.02        | 12         |
| <b>21</b> | <b>Pioneer</b> | <b>P9880AM</b> | <b>98</b> | <b>224.1</b>     | <b>17.9</b> | <b>57.4</b>    | <b>870.40</b> | <b>1</b>   |
| 22        | GH             | G97N86-5222EZR | 97        | 200.1            | 18.1        | 57.6           | 775.59        | 20         |
| 23        | GH             | G96R61-5222EZR | 96        | 212              | 17.4        | 58             | 827.65        | 10         |
| 24        | Peterson       | 76Y96RIB       | 96        | 217.2            | 17.2        | 58.9           | 850.08        | 6          |



# WE ENGINEER THE SEEDS. NOT THE NUMBERS.



| PLOT NAME     | LOCATION                    | IRRIGATION    | TILLAGE      |
|---------------|-----------------------------|---------------|--------------|
| Jason Miller  | Between Herman & Hoffman MN | Non-Irrigated | Conventional |
| PLANTING DATE | HARVEST DATE                | PREVIOUS CROP | ROW WIDTH    |
| 05-01-20      | 10-8-20                     | Soybeans      | 30"          |

| Entry #   | Brand          | Hybrid/Brand   | RM         | Yield (bu/a 56#) | Mst (%)     | Tst Wt (lb/bu) | AGI           | Yield Rank |
|-----------|----------------|----------------|------------|------------------|-------------|----------------|---------------|------------|
| 1         | Enestvedt      | E-646          | 94         | 234.7            | 18.9        | 53.8           | 667.49        | 7          |
| <b>2</b>  | <b>Pioneer</b> | <b>P9211AM</b> | <b>92</b>  | <b>240</b>       | <b>19.2</b> | <b>55</b>      | <b>679.68</b> | <b>4</b>   |
| 3         | Channel        | 192-08VT2PRIB  | 92         | 224.5            | 21.1        | 54             | 618.72        | 12         |
| 4         | Croplan        | 3575VT2PRIB    | 95         | 230.4            | 19.8        | 56.3           | 646.96        | 9          |
| 5         | Croplan        | 4188VT2PRIB    | 100        | 246.6            | 23.7        | 52.9           | 653.98        | 1          |
| 6         | Midwest        | MW93-07VT2PRIB | 93         | 228              | 17.5        | 55.8           | 661.20        | 10         |
| <b>7</b>  | <b>Pioneer</b> | <b>P9492AM</b> | <b>94</b>  | <b>240.8</b>     | <b>18.6</b> | <b>56.5</b>    | <b>687.72</b> | <b>2</b>   |
| 8         | Channel        | 194-49VT2PRIB  | 94         | 240.6            | 23.6        | 55.5           | 639.03        | 3          |
| 9         | Enestvedt      | E-652VT2P      | 95         | 225              | 20.1        | 56.4           | 629.10        | 11         |
| 10        | Channel        | 197-90VT2RIB   | 97         | 238.8            | 19.9        | 56.8           | 669.60        | 5          |
| 11        | Dekalb         | DKC47-54RIB    | 97         | 231.1            | 24.8        | 54.5           | 602.71        | 8          |
| <b>12</b> | <b>Pioneer</b> | <b>P0220AM</b> | <b>102</b> | <b>235.4</b>     | <b>26.2</b> | <b>54.9</b>    | <b>600.74</b> | <b>6</b>   |

Precip : 20.1 In  
GDU : 2604



# WE ENGINEER THE SEEDS. NOT THE NUMBERS.

Precip: 17 in  
GDU: 2562

| PLOT NAME     | LOCATION     | IRRIGATION    | TILLAGE      |
|---------------|--------------|---------------|--------------|
| Viponds       | Herman, MN   | Non-Irrigated | Conventional |
| PLANTING DATE | HARVEST DATE | PREVIOUS CROP | ROW WIDTH    |
| 4/22/20       | 10/3/20      | Soybeans      | 22"          |

| Entry #   | Brand          | Hybrid/Brand   | RM         | Yield (bu/a 56#) | Mst (%)     | Tst Wt (lb/bu) | AGI        | Yield Rank |
|-----------|----------------|----------------|------------|------------------|-------------|----------------|------------|------------|
| 1         | Channel        | 189-39VT2PRIB  | 89         | 185.7            | 15.3        | 57.6           | 741        | 20         |
| 2         | Dekalb         | DKC41-99RIB    | 91         | 195.2            | 16.2        | 56.9           | 771        | 13         |
| <b>3</b>  | <b>Pioneer</b> | <b>P9211AM</b> | <b>92</b>  | <b>200.0</b>     | <b>16.9</b> | <b>56.7</b>    | <b>785</b> | <b>7</b>   |
| 4         | Dekalb         | DKC42-05RIB    | 92         | 192.2            | 16.8        | 57.1           | 755        | 16         |
| 5         | Dekalb         | DKC43-75RIB    | 93         | 216.1            | 17.9        | 57.1           | 839        | 1          |
| 6         | Channel        | 194-49DGV2PRIB | 94         | 197.7            | 19.3        | 55.9           | 757        | 10         |
| <b>7</b>  | <b>Pioneer</b> | <b>P9492AM</b> | <b>94</b>  | <b>206.3</b>     | <b>17.3</b> | <b>57.3</b>    | <b>806</b> | <b>3</b>   |
| 8         | Channel        | 194-75STXRIB   | 94         | 209.7            | 17.1        | 56.6           | 821        | 2          |
| <b>9</b>  | <b>Pioneer</b> | <b>P9551Q</b>  | <b>95</b>  | <b>204.8</b>     | <b>18.7</b> | <b>56.6</b>    | <b>789</b> | <b>4</b>   |
| 10        | Dekalb         | DKC47-54RIB    | 97         | 197.7            | 19.5        | 56             | 755        | 11         |
| 11        | Pioneer        | P9772AM        | 97         | 188.2            | 21.0        | 54.4           | 708        | 18         |
| 12        | Channel        | 197-90VT2PRIB  | 97         | 201.6            | 17.7        | 57.2           | 785        | 6          |
| 13        | Pioneer        | 9880AM         | 98         | 184.0            | 20.9        | 54.7           | 693        | 22         |
| 14        | Dekalb         | DKC49-45RIB    | 99         | 187.7            | 19.3        | 55.6           | 719        | 19         |
| 15        | Channel        | 199-11VT2RIB   | 99         | 198.8            | 19.6        | 55.3           | 759        | 8          |
| 16        | Pioneer        | P0306AM        | 103        | 185.6            | 22.1        | 55.7           | 690        | 21         |
| <b>17</b> | <b>Pioneer</b> | <b>P0421AM</b> | <b>104</b> | <b>198.1</b>     | <b>24.7</b> | <b>53.4</b>    | <b>716</b> | <b>9</b>   |
| <b>18</b> | <b>Pioneer</b> | <b>P0220Q</b>  | <b>102</b> | <b>204.0</b>     | <b>21.3</b> | <b>54.4</b>    | <b>765</b> | <b>5</b>   |
| 19        | Agrigold       | A627-83VT2RIB  | 97         | 192.7            | 17.8        | 57.2           | 749        | 15         |
| 20        | Agrigold       | A629-12VT2RIB  | 99         | 197.2            | 20.3        | 53.5           | 747        | 12         |
| 21        | Pioneer        | P0075AM        | 100        | 191.7            | 24          | 53             | 698        | 17         |
| 22        | Pioneer        | P0507Q         | 105        | 174.1            | 26.6        | 53             | 616        | 23         |
| 23        | Pioneer        | P9492AM        | 94         | 193.3            | 18.0        | 56.8           | 750        | 14         |



# TRUTH, BE TOLD.

The results are in from WC Minnesota. We could tell you more about our consistent gains, but we'll let the data speak for itself.

|                                  |                                     |
|----------------------------------|-------------------------------------|
| <b>PLOT NAME</b><br>Roland Sperr | <b>LOCATION</b><br>Grant County, MN |
| <b>PLANTING DATE</b><br>5/1/2020 | <b>HARVEST DATE</b><br>10/17/2020   |

| ENTRY # | BRAND   | PRODUCT         | RM | YIELD RANK | MST (%) | TEST WT | INCOME/ACRE | YIELD Bu/A |
|---------|---------|-----------------|----|------------|---------|---------|-------------|------------|
| 1       | Pioneer | P9211Q          | 92 | 10         | 13.6    | 59.5    | \$765       | 218.5      |
| 2       | Pioneer | P9301AM         | 93 | 8          | 13.0    | 59.6    | \$795       | 227.0      |
| 3       | Channel | 194-49DGVT2PRIB | 94 | 7          | 14.4    | 59.2    | \$796       | 227.4      |
| 4       | Pioneer | P9492AM         | 94 | 9          | 12.9    | 59.0    | \$793       | 226.5      |
| 5       | Channel | 195-85DGVT2PRIB | 95 | 5          | 13.8    | 57.5    | \$805       | 230.0      |
| 6       | Pioneer | P9551Q          | 95 | 3          | 14.2    | 58.3    | \$827       | 236.3      |
| 7       | Channel | 197-90VT2PRIB   | 97 | 4          | 14.7    | 59.1    | \$812       | 232.0      |
| 8       | DeKalb  | DKC47-27RIB     | 97 | 6          | 13.9    | 58.7    | \$802       | 229.0      |
| 9       | Pioneer | P9772AM         | 97 | 2          | 15.1    | 57.0    | \$843       | 241.1      |
| 10      | Channel | 199-60TRERIB    | 99 | 1          | 14.8    | 56.6    | \$854       | 244.1      |

## PUT YOUR PLAN INTO ACTION

See your local Pioneer sales representative to learn more about the products that can help boost your success in 2021. **For more information, visit [Pioneer.com/yield](https://Pioneer.com/yield).**





# TRUTH, BE TOLD.

The results are in from WC Minnesota. We could tell you more about our consistent gains, but we'll let the data speak for itself.

|                      |                     |
|----------------------|---------------------|
| <b>PLOT NAME</b>     | <b>LOCATION</b>     |
| Shannon Boehmlehner  | Traverse County, MN |
| <b>PLANTING DATE</b> | <b>HARVEST DATE</b> |
| 5/10/2020            | 10/10/2020          |

| ENTRY # | BRAND   | PRODUCT     | RM  | YIELD RANK | MST (%) | TEST WT | INCOME/ ACRE | YIELD Bu/A |
|---------|---------|-------------|-----|------------|---------|---------|--------------|------------|
| 1       | Pioneer | P8989AM     | 89  | 16         | 14.3    | 57.1    | \$562        | 160.6      |
| 2       | Pioneer | P9188AM     | 91  | 17         | 14.9    | 58.3    | \$550        | 157.1      |
| 3       | Pioneer | P9211AM     | 92  | 14         | 14.8    | 57.2    | \$598        | 170.9      |
| 4       | Pioneer | P9301AM     | 93  | 11         | 15.3    | 58.7    | \$619        | 177.4      |
| 5       | Pioneer | P9492AM     | 94  | 4          | 15.8    | 56.7    | \$653        | 188.2      |
| 6       | Pioneer | P9551Q      | 95  | 3          | 16.7    | 58.4    | \$661        | 192.6      |
| 7       | Pioneer | P9608AM     | 96  | 9          | 16.6    | 58.4    | \$635        | 184.9      |
| 8       | Pioneer | P9772AM     | 97  | 5          | 17.4    | 56.3    | \$641        | 188.2      |
| 9       | Pioneer | P9880AM     | 98  | 1          | 17.7    | 57.1    | \$702        | 206.9      |
| 10      | Pioneer | P9998AM     | 99  | 10         | 17.2    | 58.3    | \$628        | 184.0      |
| 11      | Pioneer | P0046AM     | 100 | 2          | 18.3    | 57.5    | \$675        | 200.3      |
| 12      | Pioneer | P0075AM     | 100 | 7          | 19.6    | 55.6    | \$620        | 186.9      |
| 13      | Pioneer | P0220AM     | 102 | 6          | 20.6    | 55.3    | \$614        | 187.3      |
| 14      | Pioneer | P0306AM     | 103 | 8          | 19.3    | 56.3    | \$621        | 186.5      |
| 15      | Pioneer | P0421AM     | 104 | 13         | 21.1    | 53.2    | \$573        | 175.9      |
| 16      | DeKalb  | DKC42-05RIB | 92  | 15         | 16.0    | 56.8    | \$563        | 162.7      |
| 17      | DeKalb  | DKC47-54RIB | 97  | 12         | 17.3    | 56.1    | \$600        | 176.1      |

## PUT YOUR PLAN INTO ACTION

See your local Pioneer sales representative to learn more about the products that can help boost your success in 2021. For more information, visit [Pioneer.com/yield](https://Pioneer.com/yield).



# TRUTH, BE TOLD.

The results are in from WC Minnesota. We could tell you more about our consistent gains, but we'll let the data speak for itself.

|                                   |                                     |
|-----------------------------------|-------------------------------------|
| <b>PLOT NAME</b><br>Yost Farm     | <b>LOCATION</b><br>Swift County, MN |
| <b>PLANTING DATE</b><br>4/29/2020 | <b>HARVEST DATE</b><br>10/23/2020   |

| ENTRY # | BRAND   | PRODUCT     | RM  | YIELD RANK | MST (%) | TEST WT | INCOME/ ACRE | YIELD Bu/A |
|---------|---------|-------------|-----|------------|---------|---------|--------------|------------|
| 1       | DeKalb  | DKC46-36RIB | 96  | 7          | 15.7    | 55.9    | \$713        | 205.3      |
| 2       | Pioneer | P9211Q      | 92  | 3          | 16.1    | 55.3    | \$756        | 218.7      |
| 3       | Pioneer | P9772AM     | 97  | 5          | 16.6    | 55.9    | \$732        | 213.0      |
| 4       | Pioneer | P9880AMXT   | 98  | 6          | 18.4    | 56.0    | \$716        | 212.7      |
| 5       | Pioneer | P0075Q      | 100 | 2          | 18.4    | 56.4    | \$741        | 220.2      |
| 6       | Pioneer | P0220Q      | 102 | 4          | 18.1    | 55.7    | \$735        | 217.8      |
| 7       | Pioneer | P0421Q      | 104 | 1          | 17.9    | 57.9    | \$770        | 227.5      |
| 8       | DeKalb  | DKC46-36RIB | 96  | 8          | 15.8    | 55.8    | \$707        | 204.0      |

## PUT YOUR PLAN INTO ACTION

See your local Pioneer sales representative to learn more about the products that can help boost your success in 2021. **For more information, visit [Pioneer.com/yield](https://www.pioneer.com/yield).**





# TRUTH, BE TOLD.

The results are in from WC Minnesota. We could tell you more about our consistent gains, but we'll let the data speak for itself.

|                      |                     |
|----------------------|---------------------|
| <b>PLOT NAME</b>     | <b>LOCATION</b>     |
| Kris Hagen           | Swift County, MN    |
| <b>PLANTING DATE</b> | <b>HARVEST DATE</b> |
| 4/23/2020            | 10/17/2020          |

| ENTRY # | BRAND   | PRODUCT     | RM  | YIELD RANK | MST (%) | Test Weight | INCO ME/ ACRE | YIELD Bu/A |
|---------|---------|-------------|-----|------------|---------|-------------|---------------|------------|
| 1       | Pioneer | P8989AM     | 89  | 17         | 16.1    | 57.6        | \$740         | 214.1      |
| 2       | Pioneer | P9188AM     | 91  | 16         | 15.3    | 57.2        | \$757         | 217.0      |
| 3       | Pioneer | P9211AM     | 92  | 13         | 15.3    | 57.7        | \$814         | 233.4      |
| 4       | Pioneer | P9301AM     | 93  | 14         | 16.3    | 59.9        | \$783         | 227.2      |
| 5       | Pioneer | P9492AM     | 94  | 9          | 16.0    | 57.4        | \$816         | 235.7      |
| 6       | Pioneer | P9551Q      | 95  | 12         | 15.6    | 60.1        | \$814         | 234.3      |
| 7       | Pioneer | P9608AM     | 96  | 15         | 17.1    | 58.2        | \$749         | 219.2      |
| 8       | Pioneer | P9772AM     | 97  | 5          | 17.4    | 57.1        | \$820         | 241.0      |
| 9       | Pioneer | P9880AM     | 98  | 4          | 17.7    | 57.2        | \$820         | 241.8      |
| 10      | Pioneer | P9998AM     | 99  | 11         | 18.0    | 58.9        | \$795         | 235.1      |
| 11      | Pioneer | P0046AM     | 100 | 8          | 19.2    | 57.7        | \$788         | 236.6      |
| 12      | Pioneer | P0075AM     | 100 | 7          | 19.3    | 55.4        | \$792         | 238.0      |
| 13      | Pioneer | P0220AM     | 102 | 10         | 19.6    | 56.7        | \$781         | 235.4      |
| 14      | Pioneer | P0306AM     | 103 | 2          | 19.2    | 57.7        | \$832         | 249.8      |
| 15      | Pioneer | P0507Q      | 105 | 1          | 17.2    | 58.4        | \$902         | 264.4      |
| 16      | DeKalb  | DKC51-25RIB | 101 | 6          | 21.3    | 54.2        | \$780         | 240.1      |
| 17      | Pioneer | P0306Q      | 103 | 3          | 18.4    | 58.9        | \$832         | 247.3      |

## PUT YOUR PLAN INTO ACTION

See your local Pioneer sales representative to learn more about the products that can help boost your success in 2021. For more information, visit [Pioneer.com/yield](https://Pioneer.com/yield).