

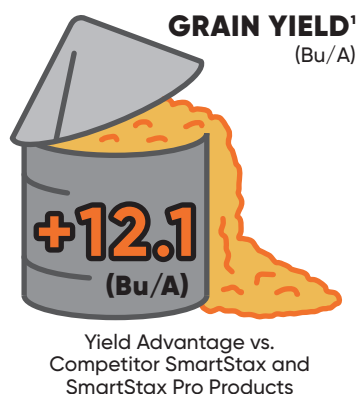
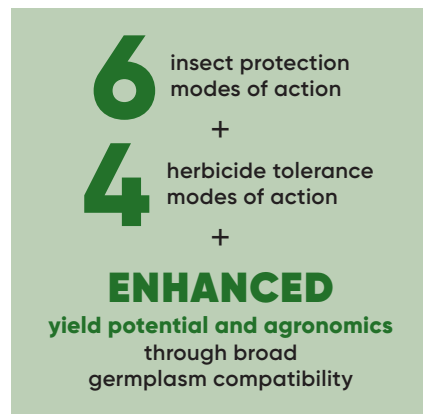


# THE ULTIMATE CORN ROOTWORM DEFENDER.



## OFFERING MORE YIELD, PROTECTION, AND FLEXIBILITY

**Vorceed® Enlist® corn** will enable multi-year flexibility to manage your corn rootworm (CRW) acres through more options than any other CRW product with multiple modes of action to control insects and tough weeds to help you maximize your ROI opportunities. Building from the same breeding event as Pioneer® brand Qrome® (DP4114) but adding on the potential for more yield, protection and flexibility from one of the largest corn germplasm libraries in the industry.



### Maximize yield potential through tailored traits and genetics for a whole corn solution.

Offering new insect protection products in a diverse lineup of high yield potential genetics across a wide range of maturities.

2023 On-farm and IMPACT data shows  
Pioneer® brand Vorceed® Enlist® corn products had  
**71% WINS** against **4,676 comparisons**

### NODE-INJURY SCORE²

Under Moderate/Heavy  
CRW Pressure

0.21



Below ground  
events  
59122xMON87411\*

0.20



**Vorceed  
Enlist corn**

### Experience exceptional control of CRW pests through three distinct modes of action.

Vorceed Enlist corn features three ways to protect against corn rootworm, including an RNAi approach.

### Why RNAi?

CRW field studies have shown an **approximate 99% reduction in adult emergence of Western corn rootworm and Northern corn rootworm compared to non-treated controls**, helping to reduce future CRW populations and expand traited or non-traited seed and management opportunities for the following year.<sup>3</sup>

# Manage tough weeds with the Enlist® weed control system.

Spray on your schedule with multiple herbicide options. Vorceed™ Enlist® corn enables the use of Enlist® herbicides to control late-season emerged broadleaf weed pressure while also staying on target.

## INCREASED OPTIONS VERSUS COMPETITORS

Product	Insect Protection modes of action	Herbicide Tolerance modes of action
Vorceed Enlist corn	<div>✓✓✓</div> <div>6 modes of action, including RNAi</div>	<div>✓✓✓✓</div> <div>2,4-D choline, glyphosate, glufosinate, &amp; FOP</div>
SmartStax® PRO technology	<div>✓✓✓</div> <div>6 modes of action, including RNAi</div>	<div>✓✓</div> <div>glyphosate, glufosinate</div>



## CRW Best Management Practices in combination with new technology.

Implementing CRW Best Management Practices as part of an insect resistance management plan can **extend the value of insect protection technologies by 30-50%**, based on our insect management research.

Learn more



<sup>1</sup> Data is based on an average of 2023 comparisons made in the U.S. through April 23, 2024. Comparisons are against all comparisons, unless otherwise stated, and within +/- 3 CRM of the competitive brand. Product responses are variable and subject to a number of environmental, disease and pest pressures. Individual results may vary. Multi-year and multi-location data are a better predictor of performance. DO NOT USE THIS OR ANY OTHER DATA FROM A LIMITED NUMBER OF TRIALS AS A SIGNIFICANT FACTOR IN PRODUCT SELECTION. Contact your Pioneer sales representative or sales professional for the latest and complete listing of traits and scores for the products provided subject to the terms and conditions of purchase which are part of the labeling and purchase documents.

<sup>2</sup> 2020-2021 efficacy trials. 17 moderate and high pressure locations.

<sup>3</sup> 2020 Corteva Agriscience Tent Emergence trials. 6 locations.

\* Events 59122 x MON87411 are the below-ground insect protection events in SmartStax PRO technology. Tested in Corteva Agriscience germplasm.

Liberty®, LibertyLink® and the Water Droplet Design are registered trademarks of BASF. ® Roundup and Roundup Ready are registered trademarks of Bayer Group.

Enlist One® and Enlist Duo® are not labeled for use in all 50 states. To find product labels, state registration status, and additional resources about the Enlist® weed control system and its availability, visit Enlist.com. Additional stewardship information on Enlist crops and to review seed product use guide details, visit traitstewardship.com.

™® Trademarks of Corteva Agriscience and its affiliated companies. © 2024 Corteva. 021143 P10 (05/24)