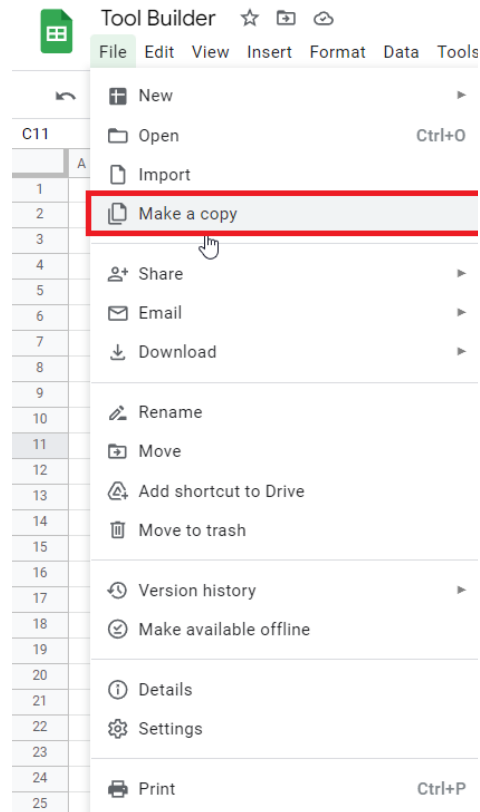


# Tool Instructions

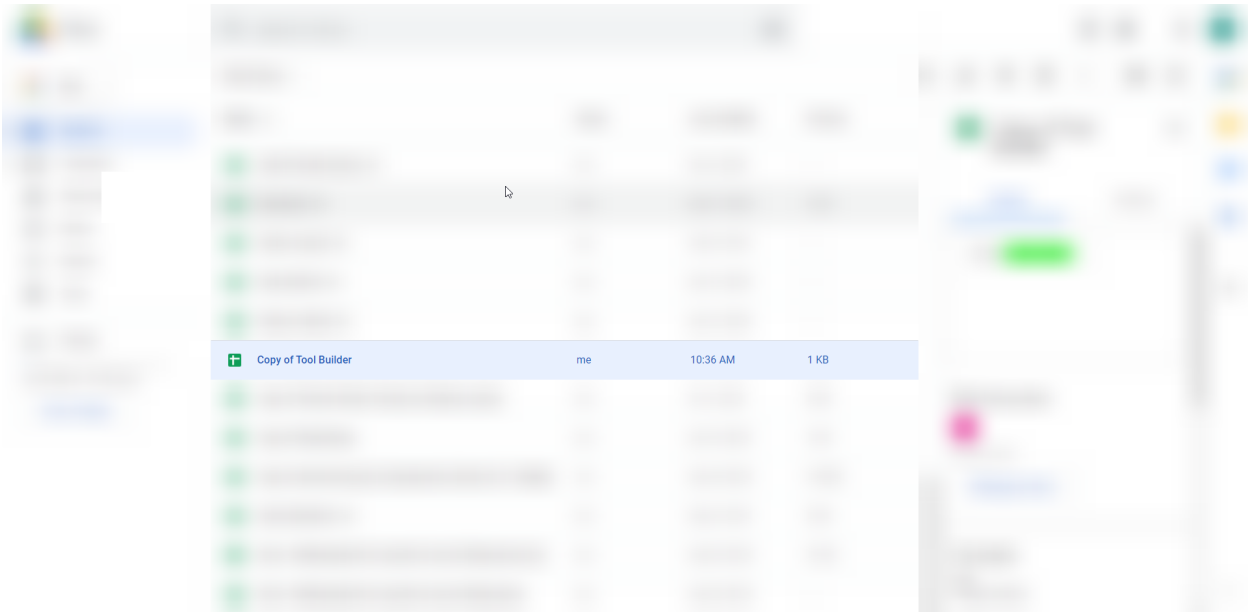
*Please note: In order to use these tools, a Google account is required.*

1. Open the spreadsheet [here](#).
2. Click on file (top-left).
3. Click on Make a copy.



Login to your Google Account.

- a. Go to MyDrive in your Google Account.
- b. Scroll down to “Copy of Tool Builder” and open.

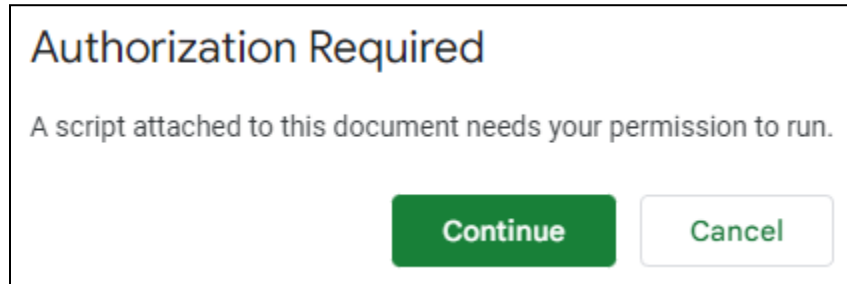


# Creating the Tool Environment

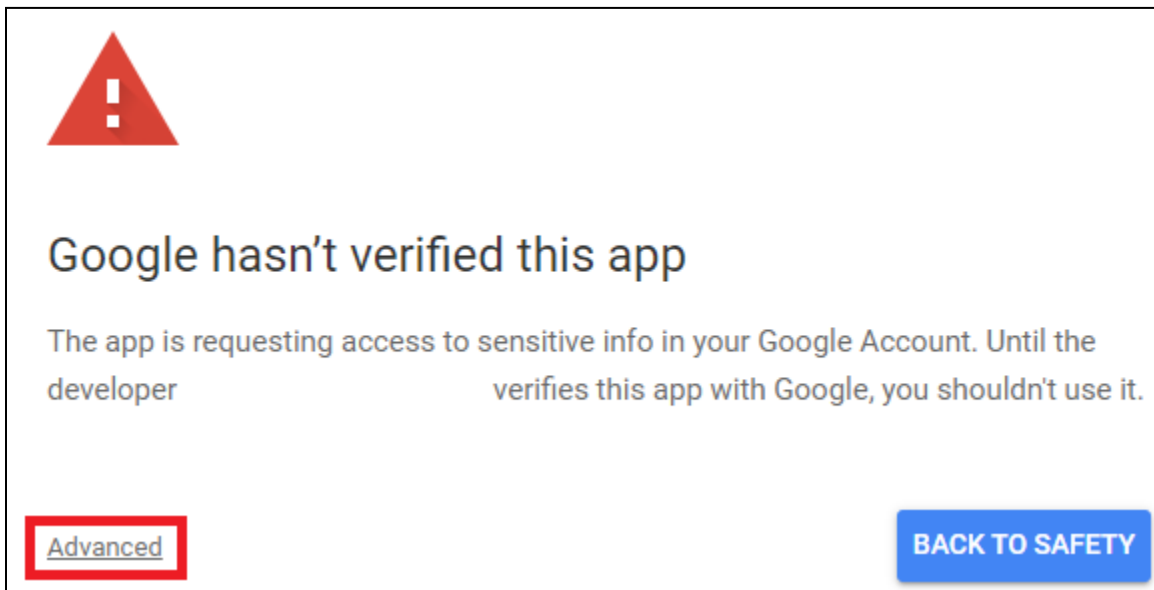
Within your google drive, you should see a file named “**Copy of Tool Builder**”.

## Initialising the Script

1. Press the “**Click Me**” button to start the script




2. Press Continue and then select the gmail account you wish the tool builder to reside



3. Click on advanced

4. Click on “Go to OneTimePress(Unsafe)”



**Google hasn't verified this app**

The app is requesting access to sensitive info in your Google Account. Until the developer verifies this app with Google, you shouldn't use it.

[Hide Advanced](#) [BACK TO SAFETY](#)

Continue only if you understand the risks and trust the developer

[Go to OneTimePress \(unsafe\)](#)

5. Press Allow (You may need to check emails for verification of script usage)
6. Press once on the “Click Me” button on the Spreadsheet (This may take a minute or two).
7. You should see the Invincible Me Tool Builder directory in your google drive after the script has finished.
8. Open the “Tools Instructions” inside the folder.