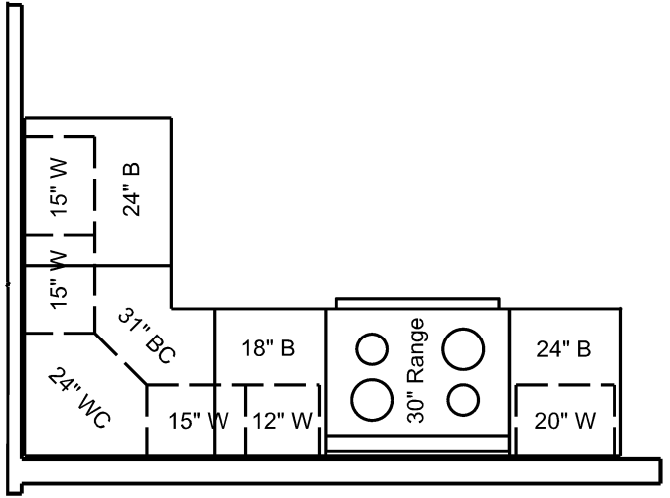
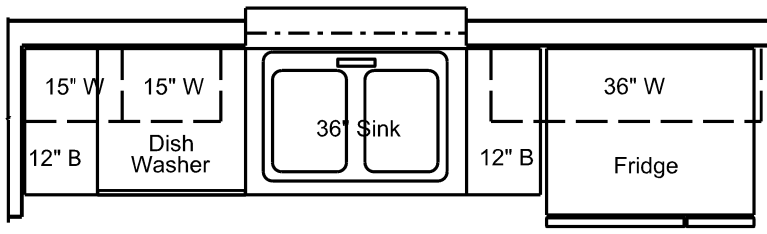


**DIMENSIONED FLOOR PLAN**

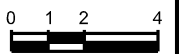
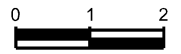
- NOTES**
1. ALL EXTERIOR WALLS SHOWN 4" THICK
  2. ALL INTERIOR WALLS SHOWN 4" THICK.
  3. ALL INTERIOR DOORS ARE 6' 8" IN HEIGHT BY WIDTH LISTED ON PLANS
  4. ALL INTERIOR SHEET ROCK SURFACES WILL BE FINISHED SMOOTHED, AND SHALL BE PRIMED WITH AN APPROVED SHEET ROCK PRIMER
  5. GUTTERS AND DOWNSPOUTS ARE RECOMMENDED FOR THE PORTION OF THE STRUCTURE ABOVE THE FRONT PORCH AND THE PATIO.

**LEGEND**

WINDOW NUMBER	SEE THIS SHEET FOR DETAILS	
DOOR NUMBER	SEE THIS SHEET FOR DETAILS	



**KITCHEN CABINET PLAN**



**Designs by Jamey**  
 PROVIDING CUSTOM HOME AND  
 REMODELING PLANS  
 1354 LEE ROAD - WAYCROSS, GA 31503  
 JAMEYOSTEEN@YAHOO.COM - 912.266.1675

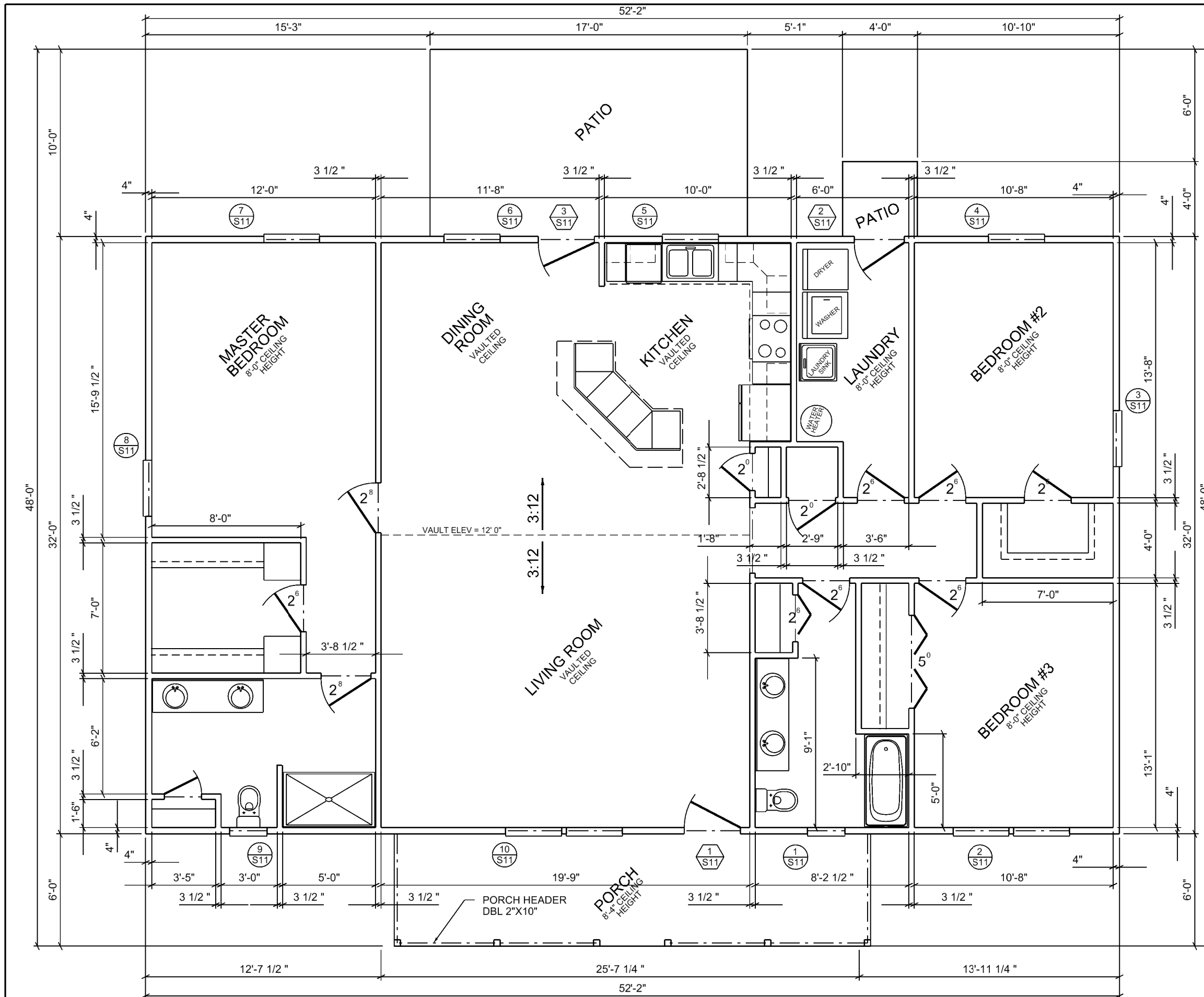
**JOHNSREALTY.COM**  
 9812 MAIN STREET NORTH  
 NAHANTA, GEORGIA 31553

Revisions	Description

**DIMENSIONED FLOOR PLAN**

Sheet

**3**



**NOTES**

1. ALL EXTERIOR WALLS SHOWN 4" THICK
2. ALL INTERIOR WALLS SHOWN 3-1/2" THICK.
3. ALL INTERIOR DOORS ARE 6' 8" IN HEIGHT BY WIDTH LISTED ON PLANS
4. ALL INTERIOR SHEET ROCK SURFACES WILL BE FINISHED SMOOTHED, AND SHALL BE PRIMED WITH AN APPROVED SHEET ROCK PRIMER
5. GUTTERS AND DOWNSPOUTS ARE RECOMMENDED FOR THE PORTION OF THE STRUCTURE ABOVE THE FRONT PORCH AND THE REAR PATIOS.

**LEGEND**

WINDOW NUMBER 12  
SEE THIS SHEET FOR DETAILS

DOOR NUMBER 7  
SEE THIS SHEET FOR DETAILS

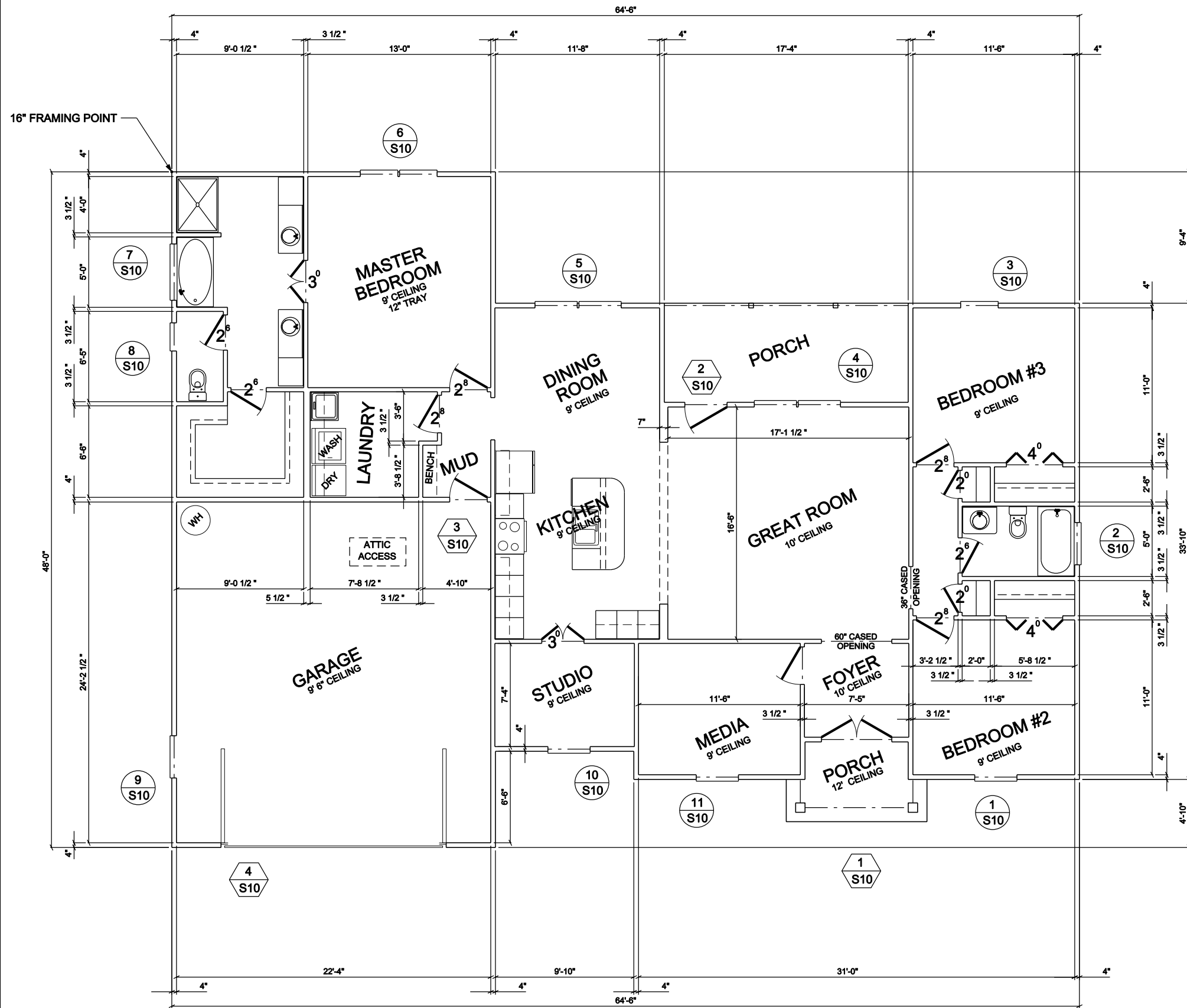
**Designs by Jamey**  
 PROVIDING CUSTOM HOME AND  
 REMODELING PLANS  
 1354 LEE ROAD - WAYCROSS, GA 31503  
 JAMEYOSTEEN@YAHOO.COM - 912.266.1675

**JOHNSREALTY.COM**  
 9812 MAIN STREET NORTH  
 NAHANTA, GEORGIA 31553

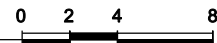
Revisions	Description
Mk	Date

**DIMENSIONED FLOOR PLAN**

1669 sq ft - 3 bedroom - 2 bathroom - no garage - Front Porch - Rear Patio - Master Left



FLOOR PLAN

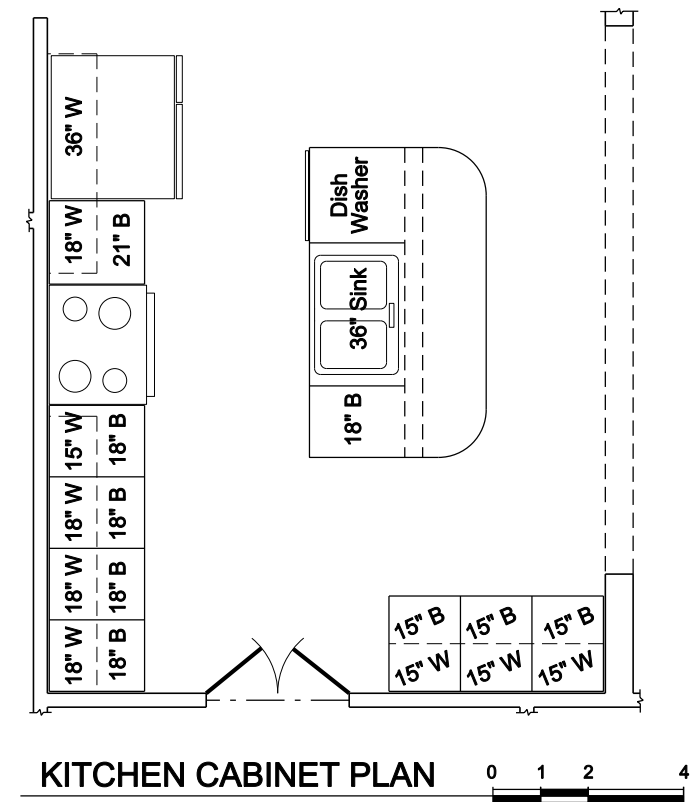


NOTES:

1. ALL EXTERIOR WALLS SHOWN 4" THICK.
2. ALL INTERIOR WALLS SHOWN 3-1/2" THICK, UNLESS NOTED.
3. ALL INTERIOR DOORS ARE 6' 8" IN HEIGHT BY WIDTH LISTED ON PLANS.
4. ALL INTERIOR SHEET ROCK SURFACES WILL BE FINISHED SMOOTHED, AND SHALL BE PRIMED WITH AN APPROVED SHEET ROCK PRIMER.
5. GUTTERS AND DOWNSPOUTS ARE RECOMMENDED FOR THE PORTION OF THE STRUCTURE ABOVE THE PORCHES.

LEGEND

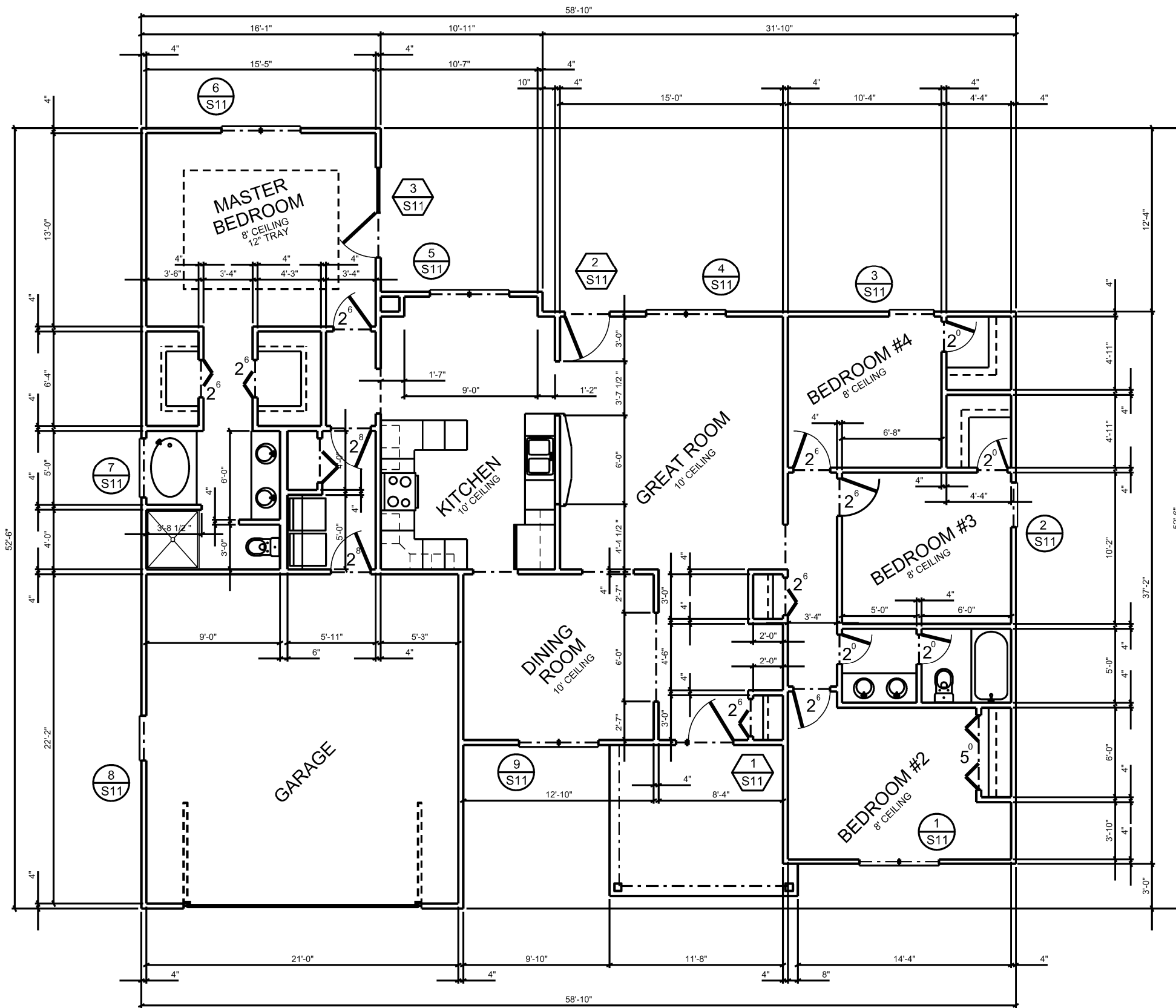
WINDOW NUMBER	SEE THIS SHEET FOR DETAILS	
DOOR NUMBER	SEE THIS SHEET FOR DETAILS	



KITCHEN CABINET PLAN

Rev.	Date	Description

1788 sq ft - 3 bedroom - great room - 2 bath - garage left - front porch - double gable



- NOTES**
1. ALL EXTERIOR WALLS SHOWN 4" THICK.
  2. ALL INTERIOR WALLS SHOWN 4" THICK, UNLESS NOTED.
  3. ALL INTERIOR DOORS ARE 6' 8" IN HEIGHT BY WIDTH LISTED ON PLANS.
  4. ALL INTERIOR SHEET ROCK SURFACES WILL BE FINISHED SMOOTHED, AND SHALL BE PRIMED WITH AN APPROVED SHEET ROCK PRIMER.
  5. GUTTERS AND DOWNSPOUTS ARE RECOMMENDED FOR THE PORTION OF THE STRUCTURE ABOVE THE PORCHES.

**LEGEND**

WINDOW NUMBER	12
SEE THIS SHEET FOR DETAILS	S11
DOOR NUMBER	7
SEE THIS SHEET FOR DETAILS	S11

**FLOOR PLAN**

1809 sq ft - 4 bedroom - great room - 2 bath - garage left - front porch - double gable - Option #2

**Designs by Jamey**  
 PROVIDING CUSTOM HOME AND  
 REMODELING PLANS  
 1354 LEE ROAD - WAYCROSS, GA 31503  
 JAMEYOSTEEN@YAHOO.COM - 912.266.1675

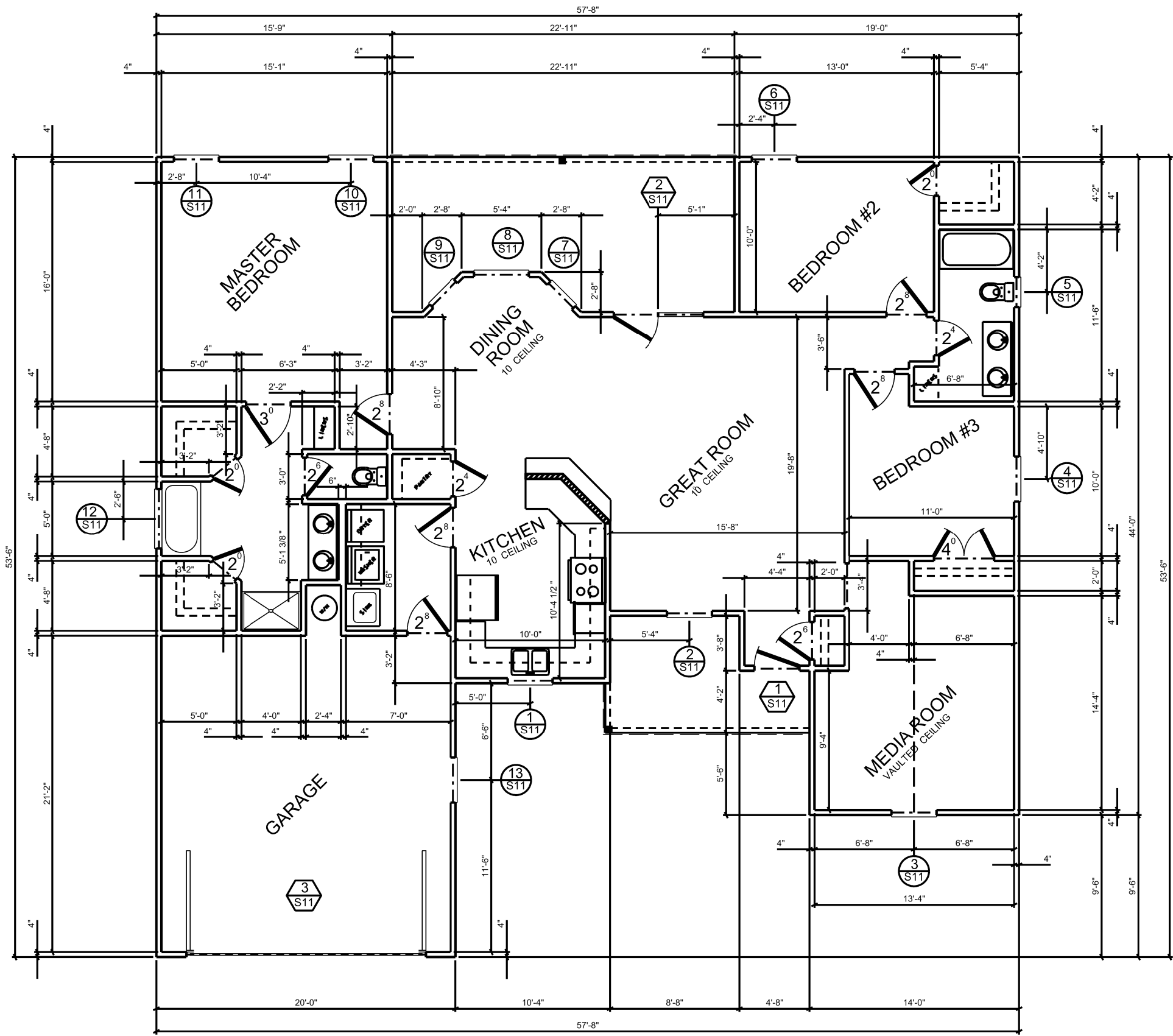
**JOHNSREALTY.COM**  
 9812 MAIN STREET NORTH  
 NAHANTA, GEORGIA 31553

Rev	Date	Description

**DIMENSIONED  
 FLOOR PLAN**

Sheet  
**3**

Dwg. By OS Ck. By TG



- NOTES**
1. ALL EXTERIOR WALLS SHOWN 4" THICK.
  2. ALL INTERIOR WALLS SHOWN 4" THICK, UNLESS NOTED.
  3. ALL INTERIOR DOORS ARE 6' 8" IN HEIGHT BY WIDTH LISTED ON PLANS.
  4. ALL INTERIOR SHEET ROCK SURFACES WILL BE FINISHED SMOOTHED, AND SHALL BE PRIMED WITH AN APPROVED SHEET ROCK PRIMER.
  5. GUTTERS AND DOWNSPOUTS ARE RECOMMENDED FOR THE PORTION OF THE STRUCTURE ABOVE THE PORCHES.

**LEGEND**

WINDOW NUMBER	SEE THIS SHEET FOR DETAILS	
DOOR NUMBER	SEE THIS SHEET FOR DETAILS	

**FLOOR PLAN**

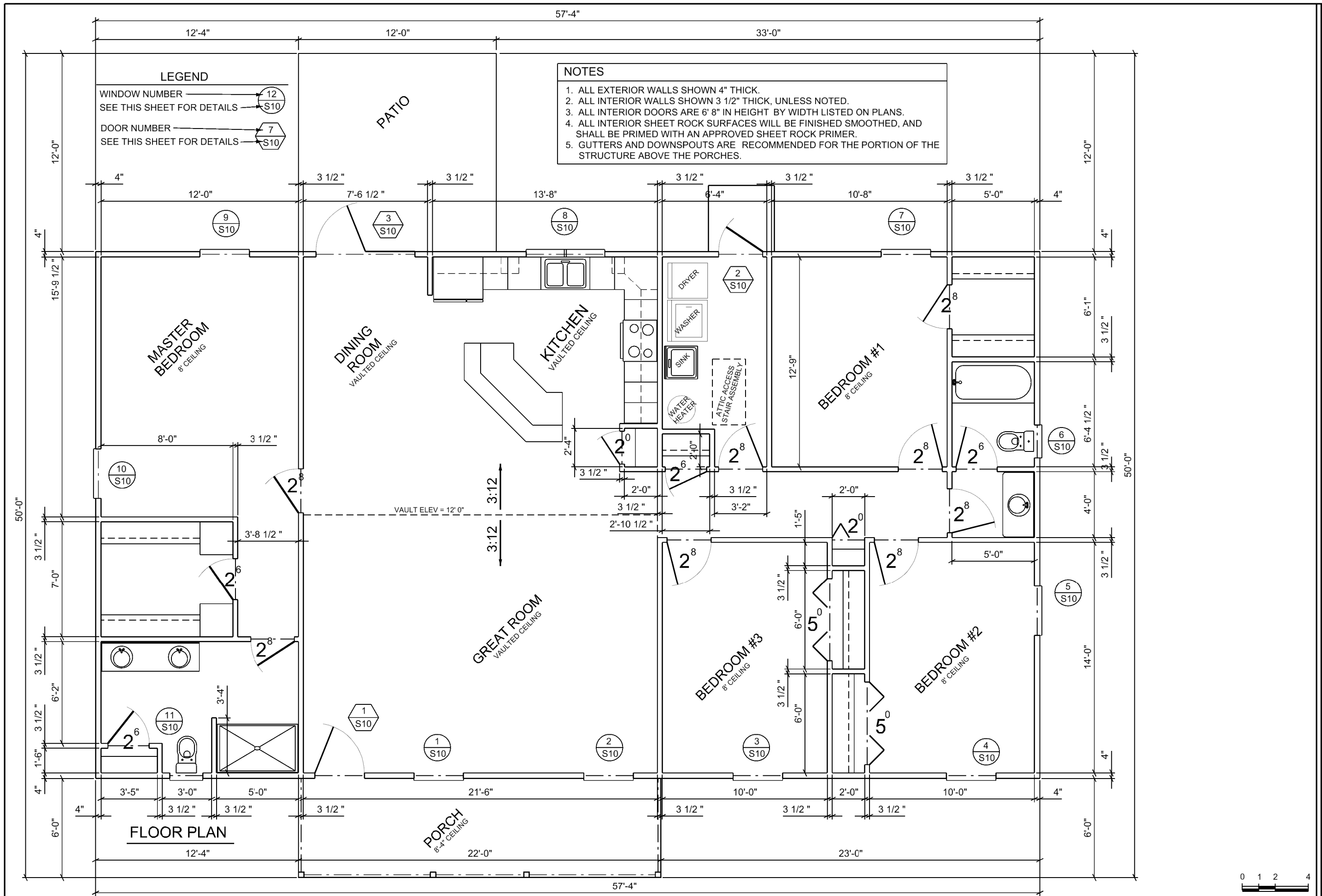
**Designs by Jamey**  
 PROVIDING CUSTOM HOME AND  
 REMODELING PLANS  
 1354 LEE ROAD - WAYCROSS, GA 31503  
 JAMEYOSTEEN@YAHOO.COM - 912.266.1675

**JOHNSREALTY.COM**  
 9812 MAIN STREET NORTH  
 NAHANTA, GEORGIA 31553

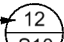
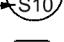
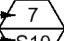

Rev	Date	Description

**DIMENSIONED  
 FLOOR PLAN**

1826 sq ft - 3 bedroom - media room - 2 bath - garage left - front porch



**LEGEND**

- WINDOW NUMBER  12
- SEE THIS SHEET FOR DETAILS  S10
- DOOR NUMBER  7
- SEE THIS SHEET FOR DETAILS  S10

**NOTES**

1. ALL EXTERIOR WALLS SHOWN 4" THICK.
2. ALL INTERIOR WALLS SHOWN 3 1/2" THICK, UNLESS NOTED.
3. ALL INTERIOR DOORS ARE 6' 8" IN HEIGHT BY WIDTH LISTED ON PLANS.
4. ALL INTERIOR SHEET ROCK SURFACES WILL BE FINISHED SMOOTHED, AND SHALL BE PRIMED WITH AN APPROVED SHEET ROCK PRIMER.
5. GUTTERS AND DOWNSPOUTS ARE RECOMMENDED FOR THE PORTION OF THE STRUCTURE ABOVE THE PORCHES.

**FLOOR PLAN**

**PORCH**  
8'-4" CEILING

**GREAT ROOM**  
VAULTED CEILING

**DINING ROOM**  
VAULTED CEILING

**KITCHEN**  
VAULTED CEILING

**MASTER BEDROOM**  
8' CEILING

**BEDROOM #3**  
8' CEILING

**BEDROOM #2**  
8' CEILING

**BEDROOM #1**  
8' CEILING

**PATIO**

CONTRACTOR:

Revisions	Description
Mk	Date

