

**G.LAB®**

# RejuvenAir

**PORTABLE CORDLESS AIR COMPRESSION  
LEG MASSAGER**

MODEL: AM0100

Version: 1

## INTRODUCTION

The RejuvenAir Leg Massager is an electronic massaging device designed to stimulate the blood flow by applying air pressure to the legs. It offers three selectable massage programs to suit individual requirements. Each chamber is equipped with an individual pressure sensor, enabling precise timing control of the inflation and deflation of the three chambers underneath the cuff. Each program can simulate different kneading effects at three selectable intensity levels, from gentle to strong.

The portable design (with built-in rechargeable battery) makes this product suitable for use indoor and for travel purposes. This product is intended for private use only and cannot replace any medical treatment. Only use this product on the legs. The manufacturer is not liable for damage resulting from improper or careless use.

## IMPORTANT SAFETY INFORMATION

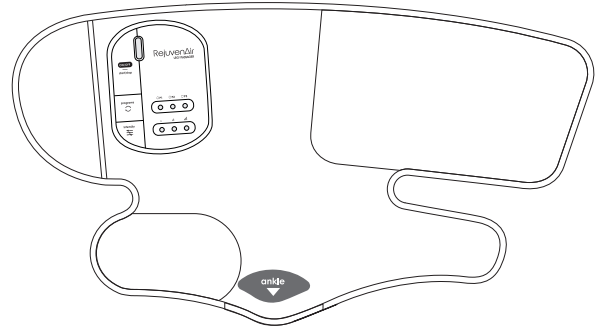
### ⚠ WARNING :

#### Do not use the RejuvenAir Leg Massager :

- On children
- During pregnancy
- While sleeping
- While bathing, or in wet conditions, or immersed in water
- If you are undergoing medical treatment
- If you are suffering from deep vein thrombosis, severe arteriosclerosis or other ischemic vascular diseases, cerebral or coronary thrombosis, severe peripheral circulation problems, pulmonary edema, pulmonary embolisms, congestive cardiac failure, severe aneurysms, neuropathy, active infections, severe inflammation, acute septicemia, continued hyperthermia and/or thrombophlebitis.
- If you have recently had surgery on your legs
- If you suffer from a medical abnormality or an injury to your legs (e.g. brittle bones, open wounds, etc.)
- If you have any local skin or tissue condition in which the garments would interfere (e.g. open wounds, massive edema, etc.)
- If you are suffering pain, the cause of which is unknown
- Do not apply this product to body parts other than the legs and feet.
- Do not apply this product to patients with skin disease on legs.
- Do not walk or move when using this product, else it may cause the patient discomfort or damage the product.
- If numbness or throbbing pain occur, the cuff may be wrapped too tightly. Stop the device and remove cuff immediately. Adjust tightness of the cuff after all the chambers are fully deflated, then restart the program.
- If swelling occurs or the user feels uncomfortable due to the use of this product, please stop using it immediately and consult your doctor.
- Do not use this product with a cardiac pacemaker, implanted medical device, life-supporting medical electronic equipments, electrocardiograph or other medical electronic equipments. Otherwise, it might endanger the user's safety.
- Do not touch the output of power adapter DC plug as it may result in an electric shock.
- Handle the product with care while in use to prevent personal injury.
- Do not fold or bend the leg cuff by force or put any heavy object on it.
- Do not open, disassemble, repair or modify this product, else the warranty will be void.
- Do not use this product in high-temperature, inflammable, electromagnetic radiation and humid places.
- If battery swells, gets hot, or smokes while charging, disconnect the charger immediately. This may cause the battery to leak, and a reaction with surrounding air may cause the chemicals to ignite, resulting in a fire.
- Use a properly rated charger to charge the lithium battery, incorrect voltage and/or current may cause fire.
- Do not position the device in a way that makes it difficult to unplug the power cord from the socket.
- Keep away from babies and children.

## PART DESCRIPTION

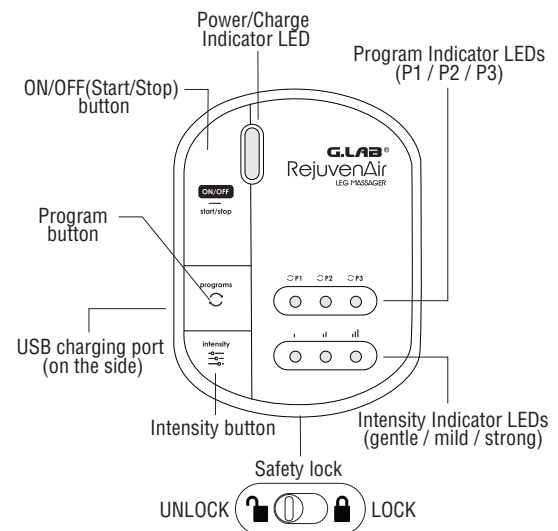
### Leg Cuff



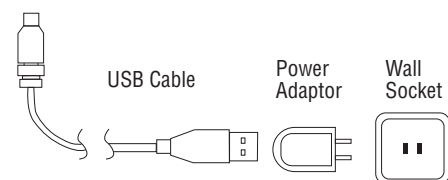
#### Note :

- The controller is firmly mounted on the leg cuff and cannot be removed.
- Do not attempt to detach the controller from the cuff, else the device will be damaged.

### Controller



### USB Power Adaptor



## BATTERY CHARGING

Connect the USB cable to the charging port of the controller. Connect the power adaptor provided to a wall socket. The Power/Charge Indicator LED will turn RED during the charging state, and the indicator LED will turn BLUE when the battery is fully charged.

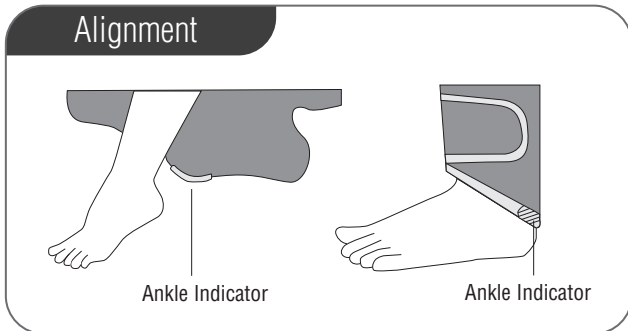
#### Note :

- Low Battery Indicator : All the LEDs on the device will blink on and off for a few seconds before the unit shuts down. This signals a need to charge the battery.
- Do not use the device when charging the battery, else it may cause battery performance and safety issues.

## OPERATING INSTRUCTIONS

### Applying the leg cuff :

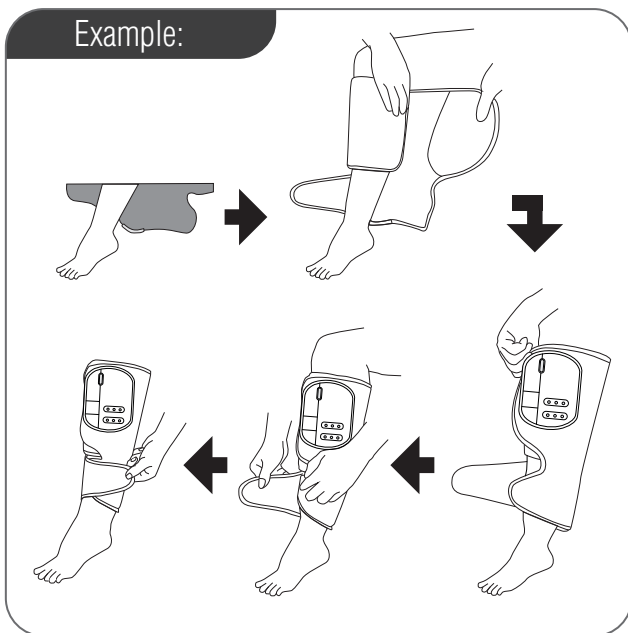
Use the Ankle Indicator as alignment reference




### Note :

- Switch off the device before wrapping the leg cuff around your leg.
- Do not apply or remove cuff when the chambers are inflated as it may cause damage to the product.
- Application of leg cuff is the same for both legs

Wrap the leg cuff around the calf according to the diagrams below



## START MESSAGE PROGRAM

1. Slide the Safety Lock towards the [  ] unlock position to enable all buttons.
2. Press the "ON/OFF" button to start the device and the Power/Charge Indicator LED will turn BLUE. Both the Program Indicator LED "P1" and the Intensity Indicator LED "gentle" will be blinking.
3. Press the "Program" button to select the desired program mode.
4. Press the "Intensity" button for intensity level selection.
5. Press the "Start/Stop" button again to start the massage session.

After the massage session has been completed, the user may press the "Start/Stop" button to repeat the same massage program, or press the "Program" or "Intensity" buttons to change the settings. Once the device is shut off and is switched on again, all settings will be reset. Refer to steps 2 to 5 to change the settings.

### Power Off :

The unit will shut off automatically about 5 minutes after the session is complete.

The user may also press and hold the "ON/OFF" button to shut off the device manually if necessary. The Power/Charge Indicator LED will be turned off.

### Note:

- If you want to adjust the intensity during a massage session, simply press the "Intensity" button to select your desired intensity level.
- If you want to change the program during a massage session, you will need to stop the current session by pressing the "Start/Stop" button. Press the "Program" button to select new program mode, then press the "Start/Stop" button to start the new session.

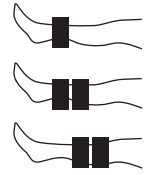
### Note:

- When the chamber is inflating, it is normal to hear a humming noise and feel a tightening sensation around your leg.
- In the event of a pressure error or the chambers' pressure is unstable, all the LEDs on the device will be turned on. Wait until all the chambers are fully deflated before pressing any button.

## SELECTING MASSAGE PROGRAM

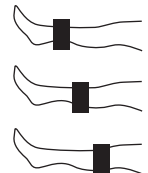
### P1: Rejuvenate Program (Wave Compression)

Sustained pressure for relief of tired legs after mild activity.



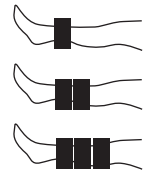
### P2 : Relax Program (Massage)

Gentle compressions, suitable for daily massage.



### P3 : Recharge Program (Sequential Compression)

Enhances pressure with prolonged compressions for extremely tired legs.



### Note:

- Please apply equal number of treatment sessions on both legs.
- Do not go through more than two sessions continuously on one leg.

## STORAGE AND MAINTENANCE

### Cleaning :

- Switch off and disconnect the power adaptor before cleaning.
- The controller casing can be cleaned using a soft damp cloth and a mild detergent. Do not use volatile liquids to clean the unit.
- Do not wash the leg cuff or immerse it in water. Do not use harsh chemicals to clean the leg cuff to avoid damaging it.

### About the battery :

- Do not open, disassemble, or service the battery pack.
- Do not crush, puncture, short external contacts, or dispose of in fire or water.
- If the device will not be in use for an extended period of time, the battery should be maintained by recharging regularly.

### Safety lock :

When carrying or transporting the leg massager, you may disable all buttons by sliding the Safety Lock to [  ] lock position.

## TECHNICAL SPECIFICATION

Dimensions :	Controller : 102 x 134 x 35mm / 4" x 5.3" x 1.4" Leg Cuff : 650 x 360mm / 25.6" x 14"
Weight :	427 g
AC/DC Adaptor :	AC input : 100-240V, 0.3A, 50/60Hz DC output : 5V 2A
Cuff size :	27 to 50cm / 10.6" x 19.7"
Cuff Pressure :	3 intensity levels (100 / 200 / 300 mmHg)
Massage Session Period :	Approx. 10 minutes per session
Battery charging time :	Approx. 2 hours
Operating time :	Approx. 8 to 14 sessions per charge
Operating conditions :	+5°C to 40°C 15-93 % relative humidity (non-condensing)
Storage conditions :	-25°C to 70°C 0-93 % relative humidity (non-condensing)



Symbol for the marking of electrical and electronics devices according to Directive 2002/96/EC.  
The device, accessories and the packaging have to be disposed of waste correctly at the end of the usage. Please follow Local Ordinances or Regulations for disposal.



P/N: 83-A0100-XXXX-R  
MADE IN CHINA