

The background of the image is a dark, industrial scene. It features a large, metallic valve or cylinder on the left side, and a large, circular gear or flange in the center. The lighting is dramatic, with strong highlights and deep shadows, creating a sense of depth and texture. The overall color palette is dominated by dark blues, greys, and blacks, with some lighter highlights on the metallic surfaces.

GLOBAL POWER SERVICES

Info@GPSValve.com

GPSValve.com

(732) 331-0987

GLOBAL POWER SERVICES

NICKEL CHROMIUM BORON ALLOYS FOR LONGEST WEAR

**Special Alloy Coatings Applied To Protect Metal Parts From
Wear, Corrosion, Abrasion, Impact & Erosion**

**Global Power Services Groundbreaking Process Applies
Industrial-Grade Special Hardware & Corrosion-Resistant
Coatings To All Metals & Alloys, Resulting In A Durable, Smooth
Surface With Unique Characteristics That Effectively Combat
Galling, Pick-Up, Wear, Corrosion, & Abrasion**

**Worn , Chipped, Cracked, Undersized, Discrepant Or Corroded
Parts, Built -Up & Reground To Original Or Revised Dimensions**

GLOBAL POWER SERVICES



Precision Metal Coating



Rebuilding



Hard Surfacing



Heavy Industrial Grinding



Machining Milling ,Roll Turning, Vertical Boring, Gear Cutting



Precision Cylinder Honing



Broaching Hobbing



Static Dynamic Balancing



Heat Treating, Hardening, Stress Relieving



Welding, Tig, Mig Heliarc



Diamond Dust Micro Finishing Lapping Polishing



Custom Precision Manufacturing & Fabricating In All Metals
Stainless Steel, Chemical Resistant, Hard Metals and Specialty

GLOBAL POWER SERVICES



**Throttle Valve Bonnet-
Reconditioned**



**Intercept Stem-Disc
Assembly-Reconditioned**



**Control Valve
Crossheads-Reconditioned**

GLOBAL POWER SERVICES

Turbine Component Services:

Fastener Production:

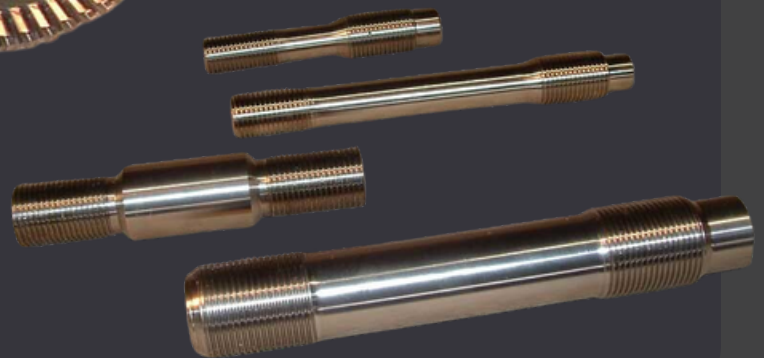
Global Power Services specializes in crafting a range of essential turbine fasteners, including studs, nuts, screws, bolts, lock plates, and pant leg washers.

Valve Components:

Our capabilities encompass the manufacturing of both new valve parts and the refurbishment of existing ones. This includes stems, discs, bushings, valve seats, and strainers.



**Industrial Turbine
Wheel-Rebladed**



Studs

GLOBAL POWER SERVICES

Valve Assembly Restoration:

Global Power Services possess the full spectrum of expertise required for repairing valve assemblies in turbines, from sub-assemblies to complete units. Our service provides a seamless solution, covering the manufacturing and restoration of emergent valve parts.

Welding Expertise:

Welding is a critical process in the revitalization of various turbine components. Our skilled personnel, backed by the necessary equipment and procedures, ensure dependable and long-lasting repairs.

Sealing Solutions:

Our offerings extend to the production of packing rings, spill strips, J-strips, and custom sealing solutions.

Erosion Shield Supply:

Global Power Services offers a comprehensive selection of stellite erosion shields, with quick turnaround times tailored to your specific needs. We also stock all the required brazing supplies for your convenience.

Tie Wire and Lashing Lug Inventory:

Global Power Services maintains a ready supply of standard-sized hollow and solid tie wire, which can be cut to your exact specifications.

GLOBAL POWER SERVICES

Finger Dovetail Pins and Reamer Resources:

Our inventory includes hardened pin blanks that can be custom-ground to meet your unique requirements. We also keep blank reamers in stock, which are custom-ground as per your field-specific needs. All pins undergo rigorous quality control testing.

Strainer Services:

We offer a complete range of strainer services, encompassing the production of new strainers and the repair of existing ones. Our stock includes screen and rivet supplies for your convenience.

Oil Deflector Support:

Our comprehensive repair service covers everything from removing old seals to manufacturing and supplying new ones, installation, and final machining. We're also well-equipped to create new oil deflectors with integral teeth.

Blade Installation Tools:

We provide a variety of specialized tools, including peening gun anvils with unique shapes and punch and die sets, to assist in blade installation.

Pulverizer Part Refurbishment and Fabrication:

Our expertise extends to the refurbishment and production of pulverizer parts.

GLOBAL POWER SERVICES



CV Spline Stems



Main Oil Pump (MOP)
Seals



Valve Stems