

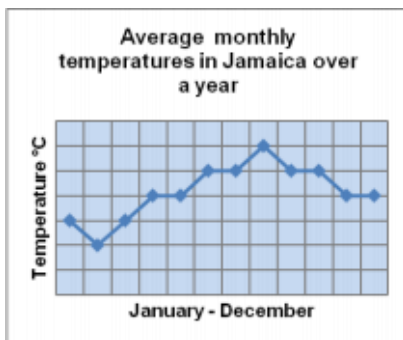
L1

Graphs and charts - quiz

Level A

Commented [1]: Very good work!

Look at the graph of monthly average temperatures recorded in Jamaica over a year.

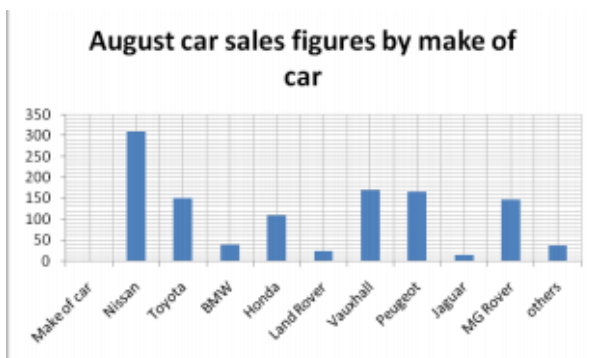


1. Which month had the highest average temperature?
A) June
B) July
C) August
2. Which month had the lowest average temperature?
A) January
B) February
C) March
3. April and May have the same average temperature as June and July.
A) True
B) False

Graphs and charts - quiz

Look at the chart of car sales.

Commented [2]: Very good work!



4. Which make of car was the most popular?

- A) Nissan
- B) Vauxhall
- C) Peugeot
- D) Toyota

5. Which 2 makes of car sold over 150 each?

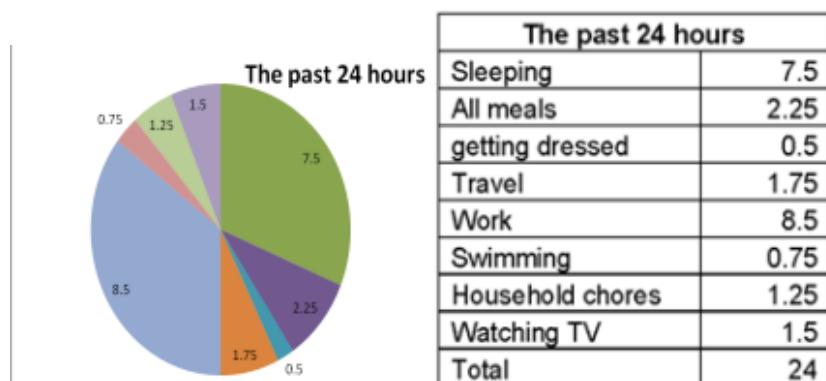
- A) Toyota and MG Rover
- B) Toyota and Vauxhall
- C) Vauxhall and Peugeot
- D) Peugeot and MG Rover

6. Which was the lowest selling make?

- A) Land Rover
- B) BMW
- C) Jaguar

Graphs and charts - quiz

7. Here's how I spent the past 24 hours? Match the table and pie chart to find out what I spent the most time on.



- A) working
- B) sleeping
- C) getting dressed

8. I spent more time on meals than travel and getting dressed combined.

- A) True
- B) False

Commented [3]: Recheck this answer. Be sure to show your calculations:

9. I spent less time watching TV than on doing my household chores.

- A) True
- B) False

10. What did I spend the least amount of time doing?

- A) swimming
- B) getting dressed
- c) household chores

© BBC 2011

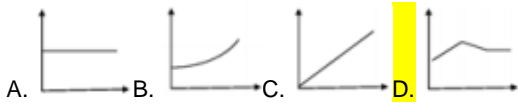
L1

Graphs and charts - quiz

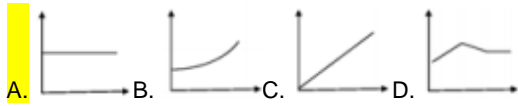
Commented [4]: Very good work!

Level B

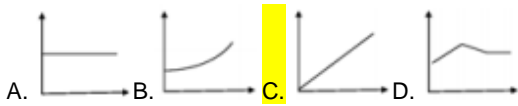
1. Choose the graph that best fits with this statement: "House prices rose in January and February, fell slightly in March and are now holding steady".



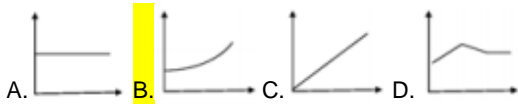
2. Choose the graph that best fits with this statement: "The TV licence has been frozen for the next 3 years".



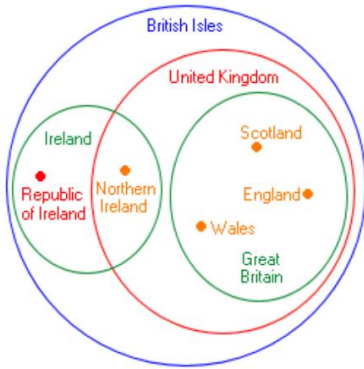
3. Choose the graph that best fits with this statement: "This car has excellent acceleration".



4. Choose the graph that best fits with this statement: "The price of groceries is still rising".



5. Look at the Venn diagram. Which country is in the United Kingdom but not in Great Britain?



- A) Northern Ireland
- B) Republic of Ireland
- C) Ireland

6. Look at the Venn diagram. How many countries are included in the United Kingdom?

- A) 6
- B) 5
- C) 4

7. From the Venn diagram, can you identify the 2 nations that make up the British Isles?

- A) Great Britain and United Kingdom
- B) United Kingdom and Northern Ireland
- C) Republic of Ireland and Northern Ireland
- D) United Kingdom and the Republic of Ireland

8. Look at the Venn diagram. Northern Ireland is part of Ireland as well as the United Kingdom.

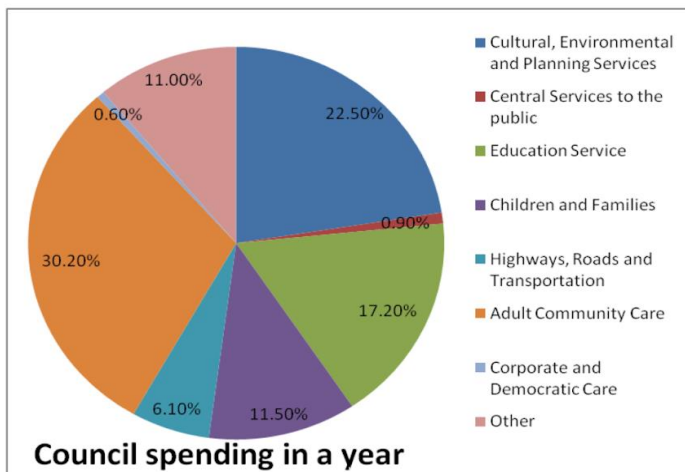
- A) True
- B) False

Commented [5]: Recheck. The nations are represented in red. You could have also researched this information.

Graphs and charts - quiz

Commented [6]: Very good work!

9. What service does the Council spend on the most?



A) Cultural, Environmental and Planning Services

B) Education Services

C) Adult Community Care

10. What percentage of the Council's income is spent on Education?

A) less than 15%

B) more than on Children and Families

C) less than on "other" services

© BBC 2011

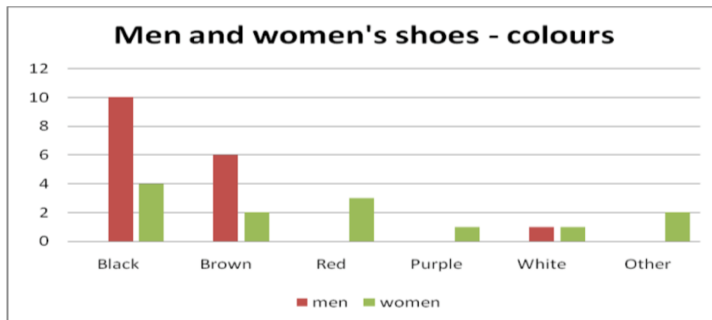
L1

Graphs and charts - quiz

Commented [7]: Very good work!

Level C

1. We collected data about the colour of shoes worn by 30 adults in a group. From the bar chart, find the second most popular colour of shoes amongst men



- A) Black
B) Brown
C) Red
2. From the bar chart, find the second most popular colour of shoes amongst women.
- A) Black
B) Brown
C) Red
3. From the bar chart, how many adults wore white shoes?
- A) 1
B) 2
C) 3
4. From the bar chart, find the total number of women who took part in the survey of shoe colours
- A) 30
B) 17
C) 15
D) 13

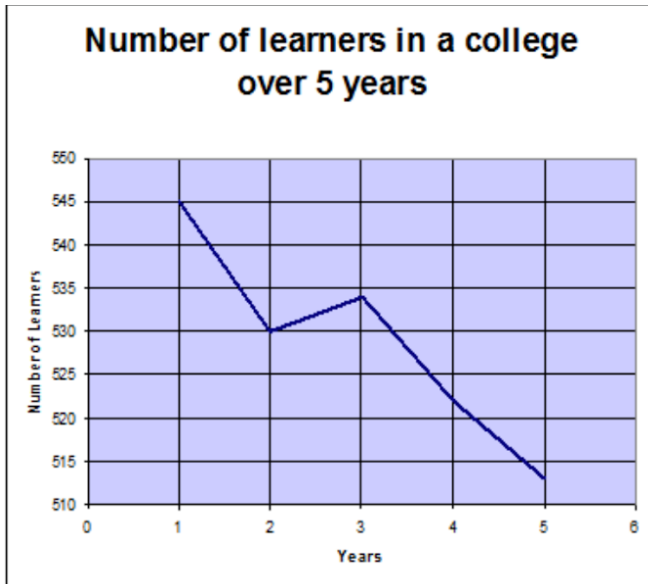
© BBC 2011

L1

Graphs and charts - quiz

Commented [8]: Very good work!

5. Which of these statements best describes what is shown in the graph?

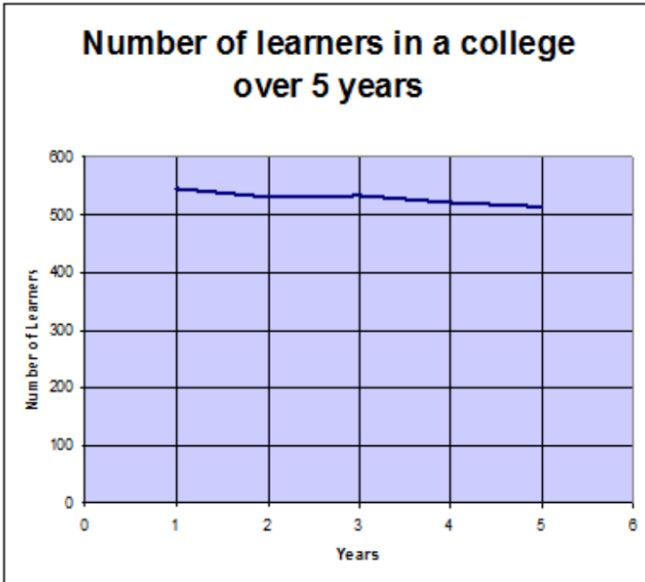


- A) The number of learners we've had in our college has dropped significantly over the last five years
- B) There has been a small decrease in the number of learners in our college over the last five years
- C) There has been no significant change in the number of learners in the last five years
6. From the graph, what was the decrease in the number of learners between Years 1 and 2?
- A) 10
- B) 15**
- C) 20
7. There was a small increase in numbers between Years 2 and 3 (see image above).
- A) True**
- B) False
8. Which of these statements best describes what is shown in the graph?
- A) The number of learners we've had in our college has dropped by over a 100 over the last five years
- B) There has been a small increase in the number of learners in our college over the last five years
- C) There has been no significant change in the number of learners in the last five years**

© BBC 2011

L1

9. The number of learners in year 1 was about.....



- A) 600
- B) 500
- C) 550

10. The number of learners in year 5 (see image above) was about.....

- A) 550
- B) 499
- C) 510

From the two videos I learned that data uses quantitative is discrete, continuous, and numerical. Qualitative is 5 senses, and descriptive data.