

There are a number of floppy disk only released for Fujitsu's FM Towns, and some are compatible with Marty. Do they work just like the CD software? That is, put the disk in, turn the power on, profit? The answer is sometimes.

You have three main scenarios:

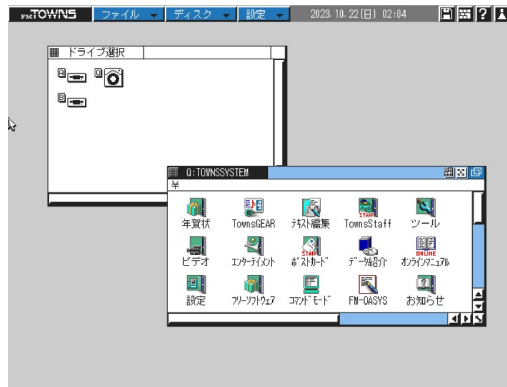
1. The floppy disk autoboots. Put it in, hit the power, play game.
2. There is no system software on the disk, but there is a shortcut.
3. There is no system software on the disk, nor is there a shortcut.

Scenario 1

I'm going to skip scenario 1. I mean, I guess I didn't since I laid out the complicated instructions. Either way, next up!

Scenario 2

You'll need a copy of the Towns system software on CD. There are a number of different releases, and software might not be compatible with all.



Put the system software CD in, and start the system. You'll be greeted with the above screen. The window in the foreground with all the icons is the Q window. Q is the default letter for the CD drive. So in addition to Towns Menu, there are all these other programs. It doesn't matter for this though, as we're interested in the A drive.



Double click the A drive icon.



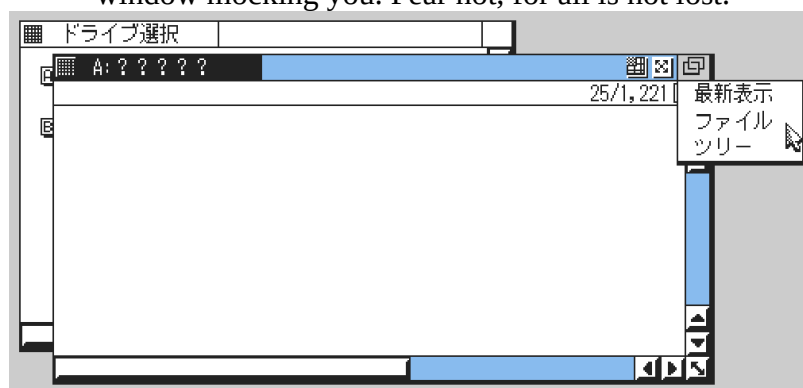
This will open up a new window showing any icons/shortcuts on the A drive. Double click it for victory... hopefully. Many games require dual floppy drives, so if you have disk 1 in drive 1, you might also need disk 2 in drive 2. Check the manual if you have a copy for exact instructions.

Scenario 3

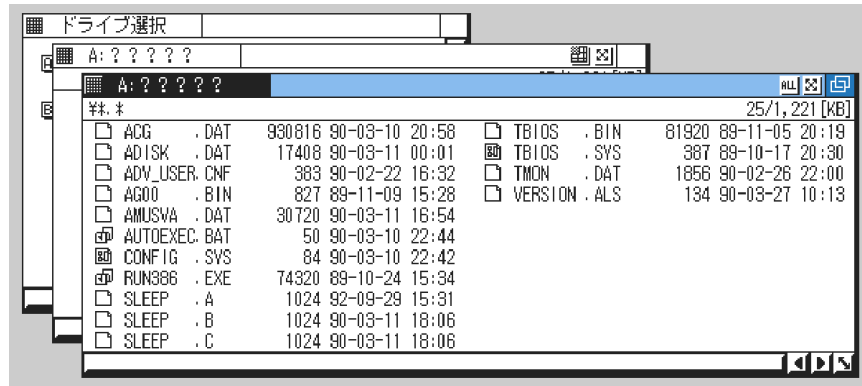
Scenario 3 starts of exactly the same as 2, except...



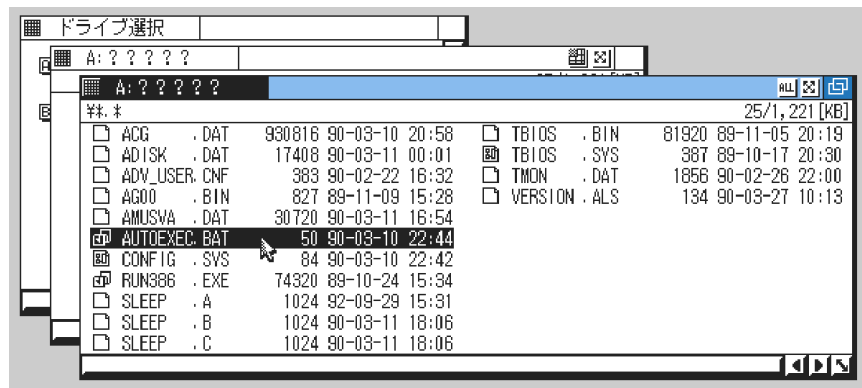
You open the A drive window and there are no icons/shortcuts to be found. There's just a blank window mocking you. Fear not, for all is not lost.



In the upper right corner there's a button that looks like 2 rectangles. Click it and a small menu appears. We're interested in the second option "ファイル" which is "File" in katakana. Click it for a bit of magic.



This opens yet another window, the file view of the A drive. These files are from 1989/1990. Were you even born yet?



The file we're interested in is "AUTOEXEC.BAT" which is a batch file that is just like the shortcut in the previous scenario. It will run the needed files, and your game will boot right up... hopefully. The same caveats apply here. You might need disk 2 in drive 2.

This is cool and all, but I only have 1 drive. What do I do?!?!

Well, you either have 1 broken drive, or you have a Marty. In either case, you fix/replace you drive, you buy a Towns PC, or you play the game on an emulator. I recommend Tsugaru.