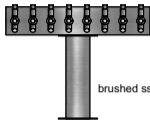
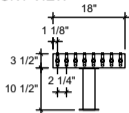
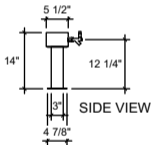


FRONT VIEW



brushed ss

(just a representation of this,  
may not look exactly like the rendering)



SIDE VIEW



TC-8

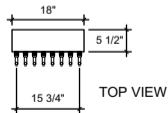
T-Head Tower

18" x 3-1/2" x 5-1/2" 304 ss taper  
head with (1) 3" ss tube with 4-7/8  
flanges

brushed ss

8 products on 2-1/4" centers  
cold blocked and glycol ready

304 ss faucets and screw in shanks



TOP VIEW