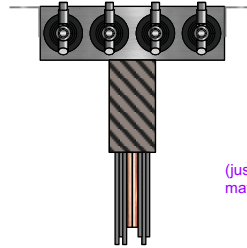
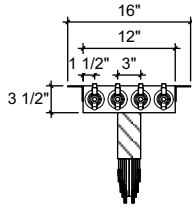
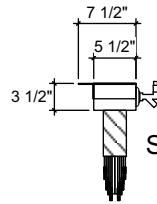


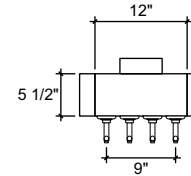
FRONT VIEW



(just a representation of this,
may not look exactly like the rendering)



SIDE VIEW



TOP VIEW



UC-4

under counter
12" x 3-1/2" x 5-1/2" 304 ss taper
head with 2" x 2" L-brackets on top
sides and back
brushed ss
4 products on 3" centers
cold blocked and glycol ready
304 ss faucets and screw in shanks