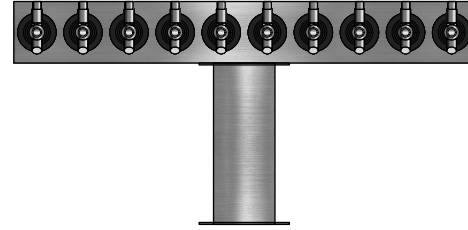
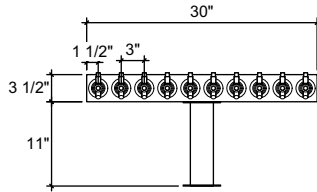
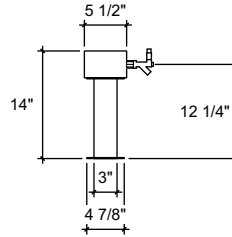


FRONT VIEW



brushed ss

(just a representation of this,
may not look exactly like the rendering)



SIDE VIEW



SQ-TC-10

T-Head Tower

Square T-head tower

30" x 3-1/2" x 5-1/2" 304 ss taper
head with

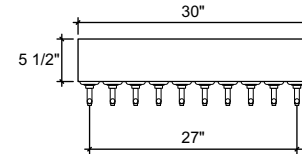
(1) 3" ss square tube leg with square
4-7/8" flange

brushed ss

10 products on 3" centers

cold blocked and glycol ready

304 ss faucets and screw in shanks



TOP VIEW