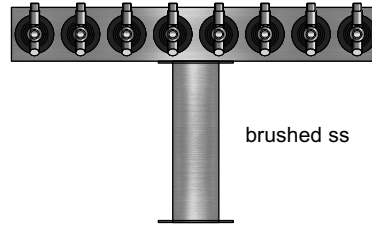


FRONT VIEW



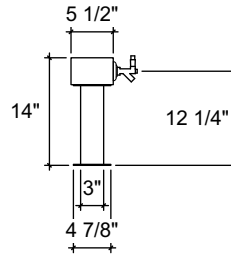
brushed ss

(just a representation of this,
may not look exactly like the rendering)

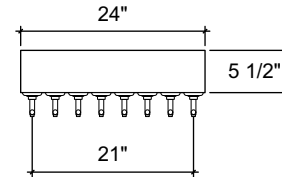


SQ-TC-8-24

Square T-head tower
 24" x 3-1/2" x 5-1/2" 304 ss taper
 head with
 (1) 3" ss square tube leg with square
 4-7/8" flange
 brushed ss
 8 products on 3" centers
 cold blocked and glycol ready
 304 ss faucets and screw in shanks



SIDE VIEW



TOP VIEW