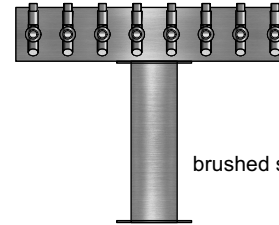
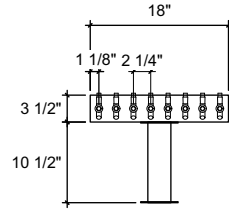
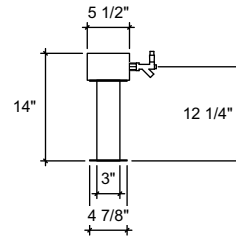


FRONT VIEW

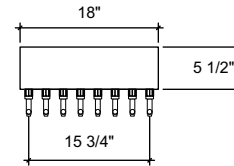


brushed ss

(just a representation of this,
may not look exactly like the rendering)



SIDE VIEW



TOP VIEW



SQ-TC-8

Square T-head tower
 18" x 3-1/2" x 5-1/2" 304 ss taper
 head with
 (1) 3" ss square tube leg with square
 4-7/8" flange
 brushed ss
 8 products on 2-1/4" centers
 cold blocked and glycol ready
 304 ss faucets and screw in shanks