

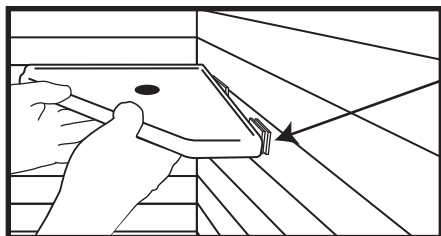
FLATBACK BATH ACCESSORIES INSTALLATION, USE & CARE

These products are designed for easy no-cut installation over new or existing shower tile walls. Available in various sizes, colors and designs to compliment any bathroom décor. Surface markings and natural color variations are inherent qualities of Questech Cast Stone, Cast Metal and Natural Stone; adding to the beauty of all Questech products. Please inspect your product prior to installation.

INSTALLATION INSTRUCTIONS

1. Locate position at desired height for install and mark it (use grout line when available and for easy clean up apply painter's tape along the top and bottom edge)
2. Use double sided foam tape tabs and place them on the specified areas on the back of shelf – remove paper tabs before installing.
3. Following the construction adhesive manufacturer's instructions, apply adhesive along guideline on back edge of shelf. **(SOLD SEPARATELY)**
4. Once adhesive is applied and the shelf is in place, support with painters tape until the adhesive sets.
5. Once fully cured, thoroughly caulk around the perimeter of the shelf to seal out water.

Note: Prior to installation, clean surface with alcohol. If corner is not square or has an irregular surface, use additional foam tape to ensure contact with the wall.



If corner is not 90° square, place additional tape tabs here.

APPROVED SUBSTRATES & SURFACES

- Marble, ceramic, glass, fiberglass reinforced wall panels and unpainted drywall

SETTING MATERIALS & ADHESIVES

Select one of the following adhesive types most suitable for your application, that is:

- Gap filling
- Water resistant
- Recommended for tile and stone
- Rapid set time

Note: Construction adhesives are sold separately

TWO-PART EPOXY GEL/PASTE ADHESIVE:

- Designed for vertical and overhead surfaces
 - No-run no drip formula
- RECOMMENDED
- Devcon 5 Minute Epoxy Gel
 - Laticrete Latapoxy 310 Stone Adhesive
 - Mapei Kerapoxy Adhesive
 - Custom Building EBM-Lite Premium Epoxy Bonding Mortar
 - Loctite Epoxy Gel

POLYURETHANE CONSTRUCTION ADHESIVE:

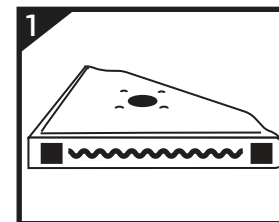
- 1 part polyurethane formula
- RECOMMENDED
- Loctite PL Premium Polyurethane
 - Loctite Premium Fast Grab Polyurethane
 - Sika Pro Select
 - Liquid Nails Polyurethane
 - Titebond Fast Set Polyurethane



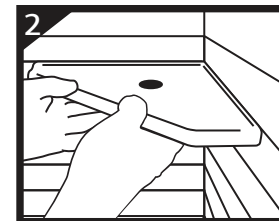
**QUICK VIDEO
INSTALLATION GUIDE**

Scan QR Code to watch video

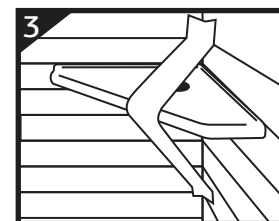
EASY 1-2-3 INSTALLATION



**APPLY TAPE TABS &
CONSTRUCTION
ADHESIVE
(SOLD SEPARATELY)**



PRESS & HOLD



**SUPPORT WITH
TAPE FOR
24 HOURS**

Q-SEAL™ PERMANENT PROTECTION

Bath accessory surfaces are protected by Q-Seal, a permanent sealer that is water and stain resistant and features Ultra-Fresh® antimicrobial protection that inhibits the growth of stain and odor-causing mold and mildew. Q-Seal is factory-applied and never needs re-sealing. For complete Questech warranty information please visit: www.Questech.com/Warranty

CARE & MAINTENANCE

- To clean, use any ordinary household cleaner. For best results, a liquid, non-abrasive cleaner is recommended.
- Liquid abrasive household cleaners should only be used after being tested in a small area to ensure no damage results.
- Do NOT clean with scouring pads, steel wool, or other abrasive implements.
- Cleaners containing ammonia, bleach or other harsh chemicals should be wiped up shortly after application to avoid surface damage.



USE IN WET AREAS
ANTIMICROBIAL, SCRATCH & STAIN RESISTANT



THE FINISHING TOUCH

