

NexxaCore™ Rigid Engineered Vinyl Flooring Installation With 5G Fold Down Locking System

5G Fold Down locking system is designed using an angle/drop mechanism with a secure locking clip. This system is installed differently than the traditional angle/angle method

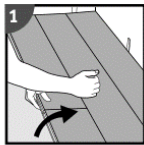


<https://youtu.be/liRZSz9cw6I>

<https://youtu.be/LQ6edxecOpM>

Note: The 5G lock joints cannot be 'lifted' or angled apart when removing or repositioning a plank. To dismantle a plank, first disengage the top/long angle joint (long side) by lifting at a slight angle while pulling the complete rows away from each other. Then simply 'slide' drop joints (board) apart along the floor. Failure to slide this joint apart will damage the locking clip and prevent proper reinstallation of the affected plank.

Dismantling panels



Separate the whole row by carefully lifting up and release the whole row.

Fold up the row and release the whole long side.



Disassemble the panels by sliding the short ends horizontally.

Never fold up a panel, as this damage the profile.

GENERAL GUIDELINES

READ INSTRUCTIONS CAREFULLY BEFORE INSTALLATION. Contact your dealer/distributor with any questions or visit www.nexxacore.com/support

Flooring should be one of the last items installed in any new construction or remodel project.

Inspect ALL materials carefully for color, finish, sheen, and defects BEFORE installation. Warranties DO NOT cover materials with visible defects once they are installed.

Samples are designed to be close representation of the actual product. The finished flooring may contain varying ratios of knots, saw marks, splits, cracks, streaks, color contrasts. Samples under varying light sources including sunlight and room colors may appear differently than the actual floor it represents.

While NexxaCore Rigid Engineered Vinyl Flooring is waterproof, it's not a moisture barrier. It's good practice to test for moisture and action accordingly. Moisture can get in the walls and structure of a home

Flooring can be damaged by rough handling before installation. Store flooring boxes flat and fully supported during shipping and storage

Flooring can be heavy and bulky. Always use proper lifting techniques when handling. Whenever possible, make use of material handling equipment and/or get assistance.

This flooring is intended for indoor use only and residential installation does not need acclimation. Commercial installation requires minimum 24-hour acclimation period.

Linco Enterprises, Inc.
13626 Monte Vista Ave., Unit B, Chino CA 91710 ; Tel (909) 590-5300 ; Fax (909) 590-5388
www.lincoenterprises.com ; www.nexxacore.com

October 2022

Avoid direct sunlight exposure to minimize fading effects on flooring. Prolonged UV exposure has a uniform fading effect on virtually all materials

Should there be any doubts to the quality, dimensions and appearance, the installer should not install flooring. INSTALLATION IS ACCEPTANCE.

JOBSITE REQUIREMENTS

It is the responsibility of the installer/owner to determine if the job site subfloor and job site conditions are environmentally and structurally acceptable for vinyl floor installation. Linco Enterprises, Inc. declines any responsibility for vinyl floor failure resulting from or connected with subfloor, subsurface, job site damage or deficiencies after vinyl flooring has been installed.

NexxaCore™ Rigid Engineered Vinyl Flooring is designed to be a floating floor installation on, above or below grade.

Crawl spaces must be a minimum of 18" from the ground to the underside of joists. Adequate cross ventilation must be provided (1.5% of crawl space sf) A Ground cover of 6-20 mil polyethylene film must be provided as a moisture barrier with 6" overlap at the joints (sealed with moisture resistant tape). Moisture prevention inhibits the potential growth of harmful bacteria and mold.

All installed areas must have a working heater & air conditioner to provide normal living conditions for minimum of 48 hours prior to installation and for duration of the flooring use. Normal living conditions include indoor temperature of 65–80°F and relative humidity of 35-55%. Portable & kerosene heaters are not recommended

SUBFLOOR REQUIREMENTS

NexxaCore™ Rigid Engineered Vinyl Flooring can be installed over concrete, wood subfloors and most existing hard-surface floor coverings.

All subfloors must be dry, clean (swept of any debris), structurally sound and level within 1/4" per 10-foot radius.

Wood subfloors must be suspended minimum 18" above the ground. Check if well secured; nail or screw every 6" along joists to avoid squeaking. If not level, sand down high spots and fill low spots with a Portland cement-based leveling compound.

Concrete subfloors must be fully cured for a minimum of 60 days and tested for moisture. Concrete moisture vapor emissions should not exceed 8lbs (ASTM F1869) or 90%RH (ASTM F2170) with a pH limit of 9. For floors outside of this range a minimum 6 mil polyfilm required between concrete and flooring. Subfloor moisture prevention limits the potential growth of harmful bacteria and mold. If not level, grind down high spots and fill low spots with a Portland cement-based leveling compound.

To install over existing hard-surface flooring, check to see it's well bonded to subfloor and level. Apply cement based leveling compound to level. Heavily cushioned vinyl flooring or vinyl flooring consisting of multiple layers are NOT suitable subfloor for installation. **Do not sand existing vinyl as it may contain asbestos. Take proper precautions and contact an asbestos abatement company to remove old vinyl.**

TOOLS NEEDED

Tape Measure, spacers, rubber mallet, tapping block, pencil, straight edge, power saw, pull bar

Do not use tape or adhesive products of any kind onto the surface. Doing so may discolor and/or damage finish.

BEFORE installation inspect material in proper light source for defects.

Doorjambes are recommended to be undercut and cabinets, kitchen islands and fixtures cannot be installed on top of flooring.

Wall moldings and transition cannot be fastened to the planks.

Mix boards from several boxes to ensure a good color and shade mix.

INSTALLATION

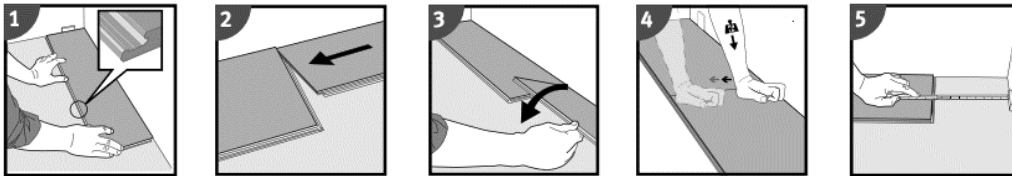
Decide direction to lay flooring. To avoid narrow piece widths or short piece lengths, recommend dry lay flooring from center of the room and adjust centerline to alleviate narrow pieces. Measure width/length of room and calculate plank width of the last row. Avoid being too narrow. For best visual effects, we don't recommend width smaller than 4.5 inches (1/2 of board width)

Large spans in excess of 80' require expansion breaks.

Using spacers, leave a minimum 1/4" expansion gap between wall / all vertical surfaces and edges of the flooring .

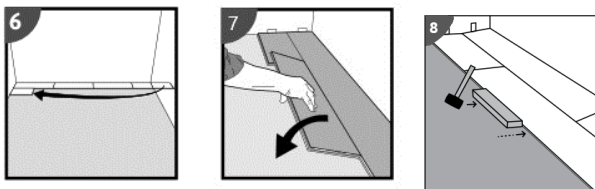
A. Installing first row :

Work from left to right with the tongue-side facing the wall, place the first board. (Note if the first row does not need to be trimmed in width, cut off the tongue (ripped) so a solid edge is along wall.) Square, align and gently place the second board close to the short end. When folding down, be sure to start from the top corner closest to previous row. Press firmly to engage 5G locking clip. Continue installing additional boards in this manner until reaching final board in the first row. Measure and cut final board to length, minimum 8"



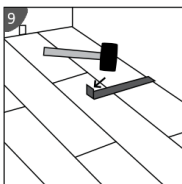
B. Installing second row and beyond:

You may use left-over board from first row if greater than 8" in length. If not, cut a new board at least 8" in length and allowing 8" between end joints. Again, ensure there is an expansion gap along the wall. Install the first board in the second row by inserting the long side tongue at a low angle into the long side groove from the first row. Check for snug fit and fold down gently until it lays flat. Check locking is engaged and seated with no gaps. Position second board using same low angle locking on the long side then fold down to engage locking clip on short end. Use mallet & tapping block on long edge to ensure tight fit. Continue installing additional boards for each row in this manner. When you reach final board in each row, measure and cut final board to length. CONTINUALLY CHECK FOR SNUG FIT AFTER EVERY BOARD BEFORE MOVING ON TO THE NEXT



C. Installing final Row:

The final row and all corresponding boards may need to be cut lengthwise (ripped.) Use a mallet/hammer and pull bar to lock the long edges of planks for final row.



Linco Enterprises, Inc.

13626 Monte Vista Ave., Unit B, Chino CA 91710 ; Tel (909) 590-5300 ; Fax (909) 590-5388

www.lincoenterprises.com ; www.nexxacore.com

October 2022

D. Finishing the Installation:

Replace molding or wall base, allowing slight clearance between the molding and the planks. Nail the molding to the wall surface not through the flooring. At doorways and at other areas where the flooring planks may meet other flooring surfaces, it is preferable to use a 't-molding', 'end molding', 'reducer' or similar to cover exposed edge. Check for clearance, do not pinch planks

RADIANT HEAT

Concrete subfloor with in-floor (embedded) radiant heating system allowed. The heating system must be 1 ½" below the surface layer of the concrete slab. Before installation of flooring, heating system must be operated at normal living temperature for 14 days to remove residual moisture. Lower temperature of heating system to 60°F for one week prior to installation of flooring. Gradually increase temperature after installation of flooring in increments of 10°F per day. Radiant Heat systems must have failsafe capability to ensure surface temperatures do not exceed 80°F.

Use of electric heating mats and other heating units directly under NexxaCore™ Rigid Engineered Vinyl Flooring will void warranty

POST INSTALLATION & MAINTENANCE

Use rosin paper and cover installed flooring area to prevent damage from other trade works. Do not use plastic film or other non-breathing material.

There are simple steps to keep NexxaCore™ Rigid Engineered Vinyl Flooring looking it's best.

Clean up spills immediately. Routinely vacuum, sweep and/or dust floors. Do NOT use treated dust mops. For heavier cleaning use a damp mop using clean water or neutral pH-based cleaner. Do NOT use harsh cleaners nor chemicals on the floor. Oil and petroleum based products can result in surface staining. Do NOT use abrasive scrubbing tools nor vacuums with beater bar. Do NOT use electric brooms with hard plastic bottoms with no padding.

Protect flooring surface. Close blinds or drapes during peak sunlight hours. Excessive heat and light will subject flooring to fading effects and potential adverse effects. Place mats at all entrances to keep dirt and debris off floor. Use non-staining, breathable mats. Rubber mats may discolor the floor. Use floor protectors for furniture. Non-staining felt pads can be used provided they are changed on a regular basis to prevent dirt, debris and sand buildup. Wide, non-staining casters at least 2" in diameter or floor protectors should be used on rolling furniture such as office chairs. To prevent point loads on heavy furniture, use large non-staining surface floor protectors. Do NOT use ball type castors as they can damage floors.

Moving - When moving heavy furniture or appliances, place a sheet of masonite or plywood under the piece being moved to distribute the weight and reduce denting or scratching. For light pieces use a clean blanket or a piece of carpet face down under the piece to be moved.

Be Aware of any sharp edges as they can scratch and gouge your floor's surface.

For complete maintenance guidelines visit www.nexxacore.com/support