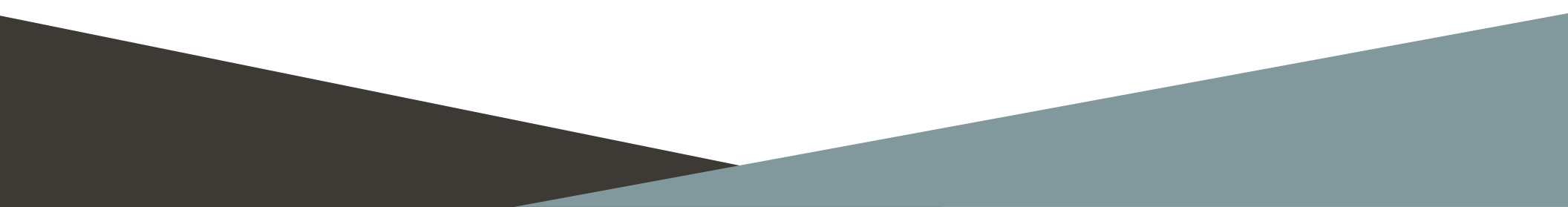


2023 RESOURCE GUIDE

SANDGATE COLLECTION

INDEX

Product Lines

- > The 8' Jolly
 - > Classic Metal Tile Line
 - > Bath Accessories
 - > High Relief Liners
 - > The 12" Jolly
 - > City Scape
 - > Cast Metal Tile & Trim
 - > Cast Metal Mosaics
- > FAQ's, Q-SEAL, Technical Specifications & Installation Instructions
- 



8' QUARTER ROUND JOLLY

EXPANDING TO GREAT LENGTHS

[<back to index](#)

8' QUARTER ROUND JOLLY

EXPANDING TO GREAT LENGTHS

BRIGHT WHITE POLISHED

1/2" X 96" QUARTER ROUND
SL708-23

BRIGHT WHITE MATTE

1/2" X 96" QUARTER ROUND
SL708-42

BLACK POLISHED

1/2" X 96" QUARTER ROUND
SL708-28

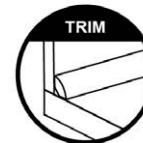
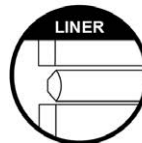
BLACK MATTE

1/2" X 96" QUARTER ROUND
SL708-41

more about

THE JOLLY

4 WAYS TO FINISH YOUR TILE





CLASSIC METAL TILE LINE

TILE, TRIM & MOSAICS

[*<back to index*](#)

CLASSIC METAL TILE LINE

TILE, TRIM & MOSAICS

BRUSHED NICKEL



½" X 12" SOHO PENCIL
ML401024011



½" X 12" JOLLY - ¼ ROUND
TILE700024011



4" X 4" FIELD TILE
TILE868024011



4" X 12" SUBWAY TILE
TILE866024011



3" X 9" SUBWAY TILE
TILE867024011



10" X 10.25 SCALLOP MOSAIC
MOSA900-024



12" X 11.625" PICKET MOSAIC
MOSA910-024

BRONZE



½" X 12" SOHO PENCIL
ML401002011



½" X 12" JOLLY - ¼ ROUND
TILE700002011



4" X 4" FIELD TILE
TILE868002011



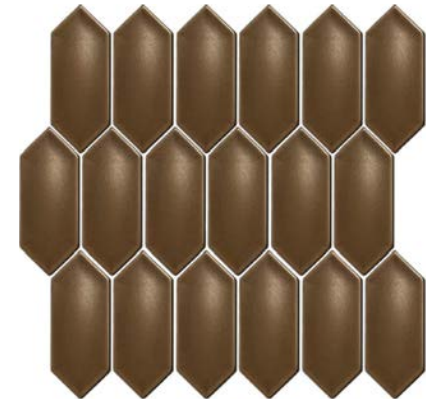
4" X 12" SUBWAY TILE
TILE866002011



3" X 9" SUBWAY TILE
TILE867002011



10" X 10.25 SCALLOP MOSAIC
MOSA900-002



12" X 11.625" PICKET MOSAIC
MOSA910-002

CLASSIC METAL TILE LINE

TILE, TRIM & MOSAICS

AZTEC GOLD



½" X 12" SOHO PENCIL
ML401042011



½" X 12" JOLLY - ¼ ROUND
TILE700042011



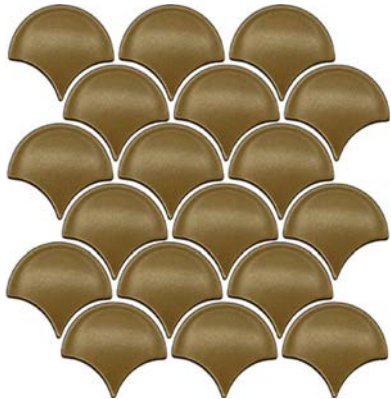
4" X 4" FIELD TILE
TILE868042011



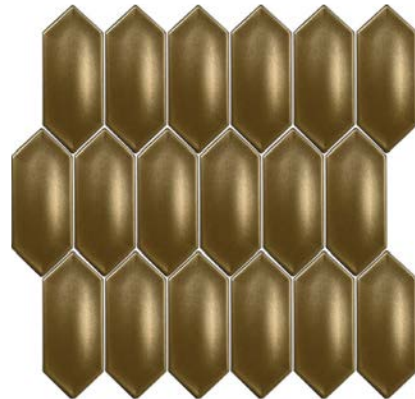
4" X 12" SUBWAY TILE
TILE866042011



3" X 9" SUBWAY TILE
TILE867042011



10" X 10.25" SCALLOP MOSAIC
MOSA900-042



12" X 11.625" PICKET MOSAIC
MOSA910-042

GRAPHITE



½" X 12" SOHO PENCIL
ML826086003



½" X 12" JOLLY - ¼ ROUND
TILE700086003



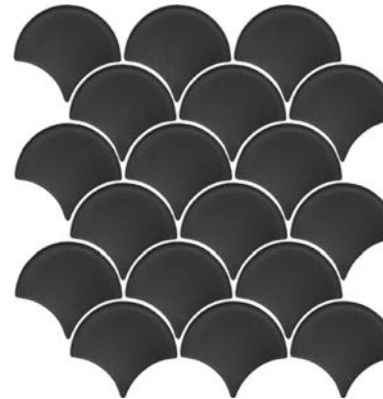
4" X 4" FIELD TILE
TILE868086003



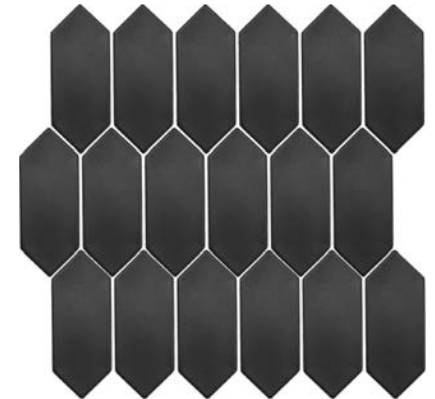
4" X 12" SUBWAY TILE
TILE866086003



3" X 9" SUBWAY TILE
TILE867086003



10" X 10.25" SCALLOP MOSAIC
MOSA900-086



12" X 11.625" PICKET MOSAIC
MOSA910-086



BATH ACCESSORIES

METRO & GEO

[*<back to index*](#)

BATH ACCESSORIES

NEW COLORS | COPPER, AZTEC GOLD, BRONZE

METRO | CAST METAL BRONZE



10" CORNER SHELF
LUGGED MBA114-002
FLATBACK MBA154-002



5" CORNER SHELF
LUGGED MBA112-002
FLATBACK MBA156-002



5" FOOT REST
LUGGED MBA120-002
FLATBACK MBA158-002

AZTEC GOLD



10" CORNER SHELF
LUGGED MBA114-042
FLATBACK MBA154-042



5" CORNER SHELF
LUGGED MBA112-042
FLATBACK MBA156-042



5" FOOT REST
LUGGED MBA120-042
FLATBACK MBA158-042

COPPER



10" CORNER SHELF
LUGGED MBA114-091
FLATBACK MBA154-091



5" CORNER SHELF
LUGGED MBA112-091
FLATBACK MBA156-091



5" FOOT REST
LUGGED MBA120-091
FLATBACK MBA158-091

GEO | CAST METAL BRONZE



10" CORNER SHELF
LUGGED MBA193-002
FLATBACK MBA183-002



5" CORNER SHELF
LUGGED MBA194-002
FLATBACK MBA184-002



5" FOOT REST
LUGGED MBA196-002
FLATBACK MBA186-002

AZTEC GOLD



10" CORNER SHELF
LUGGED MBA193-042
FLATBACK MBA183-042



5" CORNER SHELF
LUGGED MBA194-042
FLATBACK MBA184-042



5" FOOT REST
LUGGED MBA196-042
FLATBACK MBA186-042

COPPER



10" CORNER SHELF
LUGGED MBA193-091
FLATBACK MBA183-091



5" CORNER SHELF
LUGGED MBA194-091
FLATBACK MBA184-091



5" FOOT REST
LUGGED MBA196-091
FLATBACK MBA186-091

BATH ACCESSORIES

NEW COLOR | COOL GRAY POLISHED

METRO | CAST STONE COOL GRAY POLISHED



10" CORNER SHELF
LUGGED SBA117-62
FLATBACK SBA153-62



8" CORNER SHELF
LUGGED SBA115-62
FLATBACK SBA155-62



5" CORNER SHELF
LUGGED SBA113-62
FLATBACK SBA157-62



5" FOOT REST
LUGGED SBA121-62
FLATBACK SBA159-62



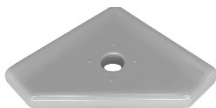
GEO | CAST STONE COOL GRAY POLISHED



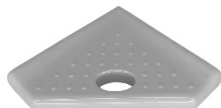
10" CORNER SHELF
LUGGED SBA195-62
FLATBACK SBA185-62



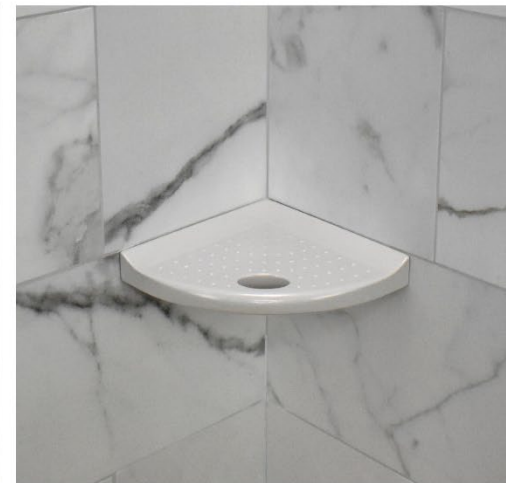
8" CORNER SHELF
LUGGED SBA193-62
FLATBACK SBA183-62



5" CORNER SHELF
LUGGED SBA194-62
FLATBACK SBA184-62



5" FOOT REST
LUGGED SBA196-62
FLATBACK SBA186-62



BATH ACCESSORIES

METRO LUGGED & METRO FLATBACK (RETROFIT)

BATH ACCESSORIES | CAST STONE POLISHED BRIGHT WHITE



10" CORNER SHELF
LUGGED SBA117-23
FLATBACK SBA153-23



8" CORNER SHELF
LUGGED SBA115-23
FLATBACK SBA155-23



5" CORNER SHELF
LUGGED SBA113-23
FLATBACK SBA157-23



5" FOOT REST
LUGGED SBA121-23
FLATBACK SBA159-23

POLISHED GRAY



10" CORNER SHELF
LUGGED SBA117-21
FLATBACK SBA153-21



8" CORNER SHELF
LUGGED SBA115-21
FLATBACK SBA155-21



5" CORNER SHELF
LUGGED SBA113-21
FLATBACK SBA157-21



5" FOOT REST
LUGGED SBA121-21
FLATBACK SBA159-21

POLISHED WHITE



10" CORNER SHELF
LUGGED SBA117-13
FLATBACK SBA153-13



8" CORNER SHELF
LUGGED SBA115-13
FLATBACK SBA155-13



5" CORNER SHELF
LUGGED SBA113-13
FLATBACK SBA157-13



5" FOOT REST
LUGGED SBA121-13
FLATBACK SBA159-13

MATTE BRIGHT WHITE



10" CORNER SHELF
LUGGED SBA116-67
FLATBACK SBA153-67



8" CORNER SHELF
LUGGED SBA114-67
FLATBACK SBA155-67



5" CORNER SHELF
LUGGED SBA112-67
FLATBACK SBA157-67



5" FOOT REST
LUGGED SBA120-67
FLATBACK SBA159-67

MATTE GRAY



10" CORNER SHELF
LUGGED SBA116-12
FLATBACK SBA153-12



8" CORNER SHELF
LUGGED SBA114-12
FLATBACK SBA155-12



5" CORNER SHELF
LUGGED SBA112-12
FLATBACK SBA157-12



5" FOOT REST
LUGGED SBA120-12
FLATBACK SBA159-12

MATTE SAND



10" CORNER SHELF
LUGGED SBA116-03
FLATBACK SBA153-03



8" CORNER SHELF
LUGGED SBA114-03
FLATBACK SBA155-03



5" CORNER SHELF
LUGGED SBA112-03
FLATBACK SBA157-03

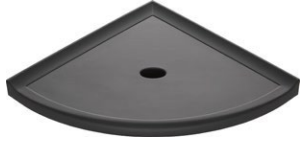


5" FOOT REST
LUGGED SBA120-03
FLATBACK SBA159-03

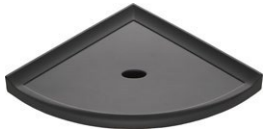
BATH ACCESSORIES

METRO LUGGED & METRO FLATBACK (RETROFIT)

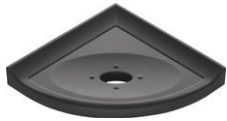
BATH ACCESSORIES | CAST STONE & CAST METAL
MATTE GRAPHITE



10" CORNER SHELF
LUGGED MBA116-086
FLATBACK MBA153-086



8" CORNER SHELF
LUGGED MBA114-086
FLATBACK MBA155-086



5" CORNER SHELF
LUGGED MBA112-086
FLATBACK MBA157-086



5" FOOT REST
LUGGED MBA120-086
FLATBACK MBA159-086

BRUSHED NICKEL



8" CORNER SHELF
LUGGED SBA114-024
FLATBACK SBA154-024



5" CORNER SHELF
LUGGED SBA112-024
FLATBACK SBA156-024



5" FOOT REST
LUGGED SBA120-024
FLATBACK SBA158-024

DARK OIL RUBBED BRONZE



8" CORNER SHELF
LUGGED SBA114-070
FLATBACK SBA154-070



5" CORNER SHELF
LUGGED SBA112-070
FLATBACK SBA156-070



5" FOOT REST
LUGGED SBA120-070
FLATBACK SBA158-070



BATH ACCESSORIES

GEO LUGGED & GEO FLATBACK (RETROFIT)

BATH ACCESSORIES | CAST STONE POLISHED BRIGHT WHITE



10" CORNER SHELF
LUGGED SBA195-23
FLATBACK SBA185-23



8" CORNER SHELF
LUGGED SBA193-23
FLATBACK SBA183-23



5" CORNER SHELF
LUGGED SBA194-23
FLATBACK SBA184-23



5" FOOT REST
LUGGED SBA196-23
FLATBACK SBA186-23

POLISHED GRAY



10" CORNER SHELF
LUGGED SBA195-21
FLATBACK SBA185-21



8" CORNER SHELF
LUGGED SBA193-21
FLATBACK SBA183-21



5" CORNER SHELF
LUGGED SBA194-21
FLATBACK SBA184-21



5" FOOT REST
LUGGED SBA196-21
FLATBACK SBA186-21

POLISHED WHITE



10" CORNER SHELF
LUGGED SBA195-13
FLATBACK SBA185-13



8" CORNER SHELF
LUGGED SBA193-13
FLATBACK SBA183-13



5" CORNER SHELF
LUGGED SBA194-13
FLATBACK SBA184-13



5" FOOT REST
LUGGED SBA196-13
FLATBACK SBA186-13

MATTE BRIGHT WHITE



10" CORNER SHELF
LUGGED SBA195-67
FLATBACK SBA185-67



8" CORNER SHELF
LUGGED SBA193-67
FLATBACK SBA183-67



5" CORNER SHELF
LUGGED SBA194-67
FLATBACK SBA184-67



5" FOOT REST
LUGGED SBA196-67
FLATBACK SBA186-67

MATTE GRAY



10" CORNER SHELF
LUGGED SBA195-12
FLATBACK SBA185-12



8" CORNER SHELF
LUGGED SBA193-12
FLATBACK SBA183-12



5" CORNER SHELF
LUGGED SBA194-12
FLATBACK SBA184-12



5" FOOT REST
LUGGED SBA196-12
FLATBACK SBA186-12

MATTE SAND



10" CORNER SHELF
LUGGED SBA195-03
FLATBACK SBA185-03



8" CORNER SHELF
LUGGED SBA193-03
FLATBACK SBA183-03



5" CORNER SHELF
LUGGED SBA194-03
FLATBACK SBA184-03



5" FOOT REST
LUGGED SBA196-03
FLATBACK SBA186-03

BATH ACCESSORIES

GEO LUGGED & GEO FLATBACK (RETROFIT)

BATH ACCESSORIES | CAST STONE & CAST METAL MATTE GRAPHITE



10" CORNER SHELF
LUGGED MBA195-086
FLATBACK MBA185-086



8" CORNER SHELF
LUGGED MBA193-086
FLATBACK MBA183-086



5" CORNER SHELF
LUGGED MBA194-086
FLATBACK MBA184-086



5" FOOT REST
LUGGED MBA196-086
FLATBACK MBA186-086

BRUSHED NICKEL



8" CORNER SHELF
LUGGED SBA193-024
FLATBACK SBA183-024



5" CORNER SHELF
LUGGED SBA194-024
FLATBACK SBA184-024



5" FOOT REST
LUGGED SBA196-024
FLATBACK SBA186-024

DARK OIL RUBBED BRONZE



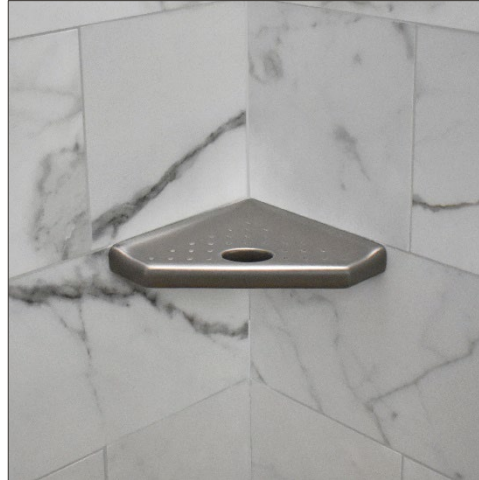
8" CORNER SHELF
LUGGED SBA193-070
FLATBACK SBA183-070



5" CORNER SHELF
LUGGED SBA194-070
FLATBACK SBA184-070



5" FOOT REST
LUGGED SBA196-070
FLATBACK SBA186-070





HIGH RELIEF LINERS

SEAMLESS TRANSITION

[<back to index](#)

HIGH RELIEF LINERS

CAST STONE | SEAMLESS TRANSITION

POLISHED BRIGHT WHITE



2" X 12" LINEAR CHAIR RAIL
SL823-23



3/4" X 12" SOHO BULLNOSE
SL824-23



1/2" X 12" SOHO PENCIL
SL826-23



3/4" X 12" LINEAR LINER
SL825-23



1/2" X 12" LINEAR PENCIL
SL827-23



1/2" X 12" NAIL HEAD PENCIL
SL829-23



1/2" X 12" CORNICE PENCIL
SL828-23



MATTE BRIGHT WHITE



2" X 12" LINEAR CHAIR RAIL
SL823-67



3/4" X 12" SOHO BULLNOSE
SL824-67



1/2" X 12" SOHO PENCIL
SL826-67



3/4" X 12" LINEAR LINER
SL825-67



1/2" X 12" LINEAR PENCIL
SL827-67



1/2" X 12" NAIL HEAD PENCIL
SL829-67



1/2" X 12" CORNICE PENCIL
SL828-67



MATTE GRAPHITE



2" X 12" LINEAR CHAIR RAIL
ML823086



3/4" X 12" SOHO BULLNOSE
ML824086



1/2" X 12" SOHO PENCIL
ML826086



3/4" X 12" LINEAR LINER
ML825086



1/2" X 12" LINEAR PENCIL
ML827086



1/2" X 12" NAIL HEAD PENCIL
ML829086



1/2" X 12" CORNICE PENCIL
ML828086



HIGH RELIEF LINERS

CAST STONE | SEAMLESS TRANSITION

POLISHED GRAY



2" X 12" LINEAR CHAIR RAIL
SL823-21



3/4" X 12" SOHO BULLNOSE
SL824-21



1/2" X 12" SOHO PENCIL
SL826-21



3/4" X 12" LINEAR LINER
SL825-21



1/2" X 12" LINEAR PENCIL
SL827-21



1/2" X 12" NAIL HEAD PENCIL
SL829-21



1/2" X 12" CORNICE PENCIL
SL828-21



MATTE GRAY



2" X 12" LINEAR CHAIR RAIL
SL823-12



3/4" X 12" SOHO BULLNOSE
SL824-12



1/2" X 12" SOHO PENCIL
SL826-12



3/4" X 12" LINEAR LINER
SL825-12



1/2" X 12" LINEAR PENCIL
SL827-12



1/2" X 12" NAIL HEAD PENCIL
SL829-12



1/2" X 12" CORNICE PENCIL
SL828-12





THE 12" JOLLY

QUARTER ROUND WITH INNOVATIVE VERSATILITY

[*<back to index*](#)

THE 12" JOLLY

QUARTER ROUND WITH INNOVATIVE VERSATILITY

THE JOLLY | CAST METAL

BRUSHED NICKEL - POLISHED



1/2" X 12" - 1/4 ROUND

TILE700024001

BRONZE - POLISHED



1/2" X 12" - 1/4 ROUND

TILE700002001

TITANIUM - POLISHED



1/2" X 12" - 1/4 ROUND

TILE700039001

BRUSHED NICKEL - EGGSHELL



1/2" X 12" - 1/4 ROUND

TILE700024011

BRONZE - EGGSHELL



1/2" X 12" - 1/4 ROUND

TILE700002011

TITANIUM - EGGSHELL



1/2" X 12" - 1/4 ROUND

TILE700039011

WROUGHT IRON - POLISHED



1/2" X 12" - 1/4 ROUND

TILE700068001

COPPER - POLISHED



1/2" X 12" - 1/4 ROUND

TILE700003001

DARK OIL RUBBED BRONZE - BRIGHT SATIN



1/2" X 12" - 1/4 ROUND

TILE701070003

WROUGHT IRON - EGGSHELL



1/2" X 12" - 1/4 ROUND

TILE700068011

COPPER - EGGSHELL



1/2" X 12" - 1/4 ROUND

TILE700003011

GOLD - EGGSHELL



1/2" X 12" - 1/4 ROUND

TILE700040011

AZTEC GOLD - EGGSHELL



1/2" X 12" - 1/4 ROUND

TILE700042011

THE 12" JOLLY

QUARTER ROUND WITH INNOVATIVE VERSATILITY

THE JOLLY | CAST STONE

BRIGHT WHITE - POLISHED



1/2" X 12" - 1/4 ROUND SL700-23

BRIGHT WHITE - MATTE



1/2" X 12" - 1/4 ROUND SL700-67

GRAY - POLISHED



1/2" X 12" - 1/4 ROUND SL700-21

GRAY - MATTE



1/2" X 12" - 1/4 ROUND SL700-12

WHITE - POLISHED



1/2" X 12" - 1/4 ROUND SL700-13

WHITE - MATTE



1/2" X 12" - 1/4 ROUND SL700-25

SAND - POLISHED



1/2" X 12" - 1/4 ROUND SL700-26

SAND - MATTE



1/2" X 12" - 1/4 ROUND SL700-03

TRAVERTINE - POLISHED



1/2" X 12" - 1/4 ROUND SL700-27

TRAVERTINE - MATTE



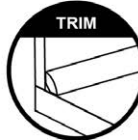
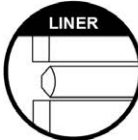
1/2" X 12" - 1/4 ROUND SL700-01

GRAPHITE - BRIGHT SATIN



1/2" X 12" - 1/4 ROUND TILE700086003

more about
THE JOLLY
4 WAYS TO FINISH YOUR TILE





CITY SCAPE

FOR COMMERCIAL OR RESIDENTIAL USE | FLOOR & WALL

[*<back to index*](#)

CITY SCAPE

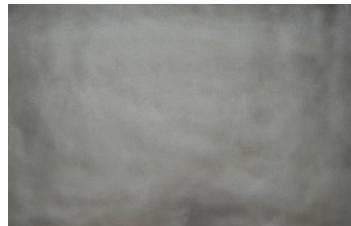
FOR COMMERCIAL OR RESIDENTIAL USE | FLOOR & WALL

BURNISHED - EGGSHELL

BRUSHED NICKEL LTC



1" X 18" BULLNOSE
TILE502024011



12" X 18" TILE501024011



2" X 18" TILE503024011



4" X 18" TILE506024011



4" X 12" TILE505024011

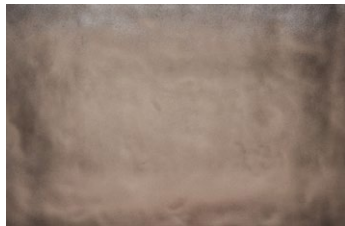


4" X 8" TILE504024011

BRONZE LTC



1" X 18" BULLNOSE
TILE502002011



12" X 18" TILE501002011



2" X 18" TILE503002011



4" X 18" TILE506002011



4" X 12" TILE505002011

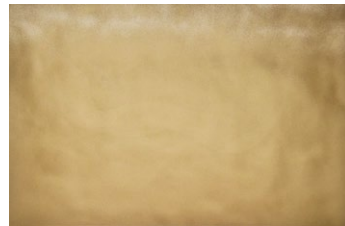


4" X 8" TILE504002011

GOLD LTC



1" X 18" BULLNOSE
TILE502040011



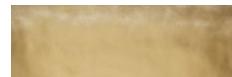
12" X 18" TILE501040011



2" X 18" TILE503040011



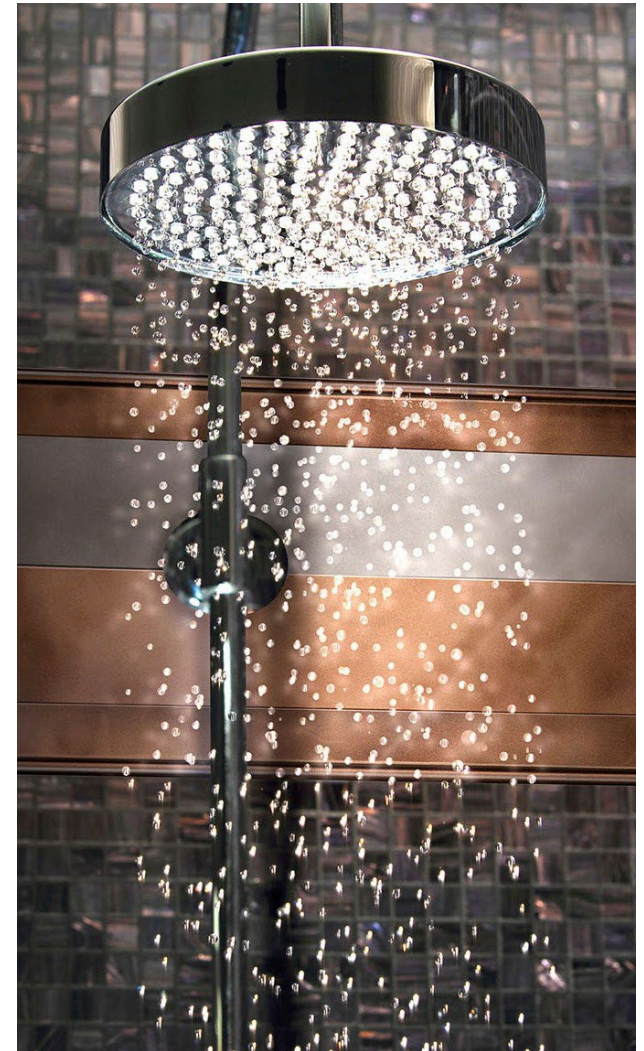
4" X 18" TILE506040011



4" X 12" TILE505040011



4" X 8" TILE504040011



*FOR FLOOR USE: LTC=LIGHT COMMERCIAL | RES=RESIDENTIAL

CITY SCAPE

FOR COMMERCIAL OR RESIDENTIAL USE | FLOOR & WALL

BURNISHED - EGGSHELL

COPPER ^{LTC}

1" X 18" BULLNOSE
TILE502003011



12" X 18" TILE501003011



2" X 18" TILE503003011



4" X 18" TILE506003011



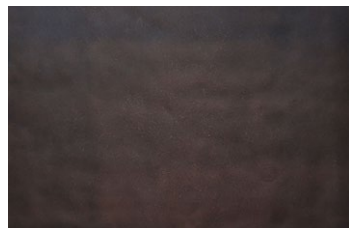
4" X 12" TILE505003011



4" X 8" TILE504003011

DARK OIL RUBBED BRONZE ^{LTC}

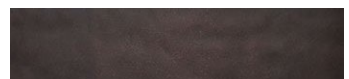
1" X 18" BULLNOSE
TILE514070003



12" X 18" TILE513070003



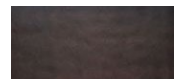
2" X 18" TILE515070003



4" X 18" TILE518070003



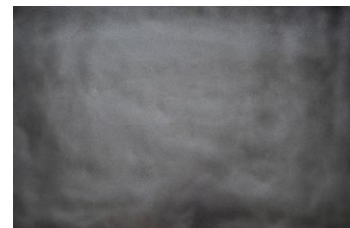
4" X 12" TILE517070003



4" X 8" TILE516070003

IRON ^{LTC}

1" X 18" BULLNOSE
TILE502068011



12" X 18" TILE501068011



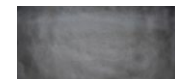
2" X 18" TILE503068011



4" X 18" TILE506068011



4" X 12" TILE505068011



4" X 8" TILE504068011



*FOR FLOOR USE: ^{LTC}=LIGHT COMMERCIAL | ^{RES}=RESIDENTIAL

CITY SCAPE

FOR COMMERCIAL OR RESIDENTIAL USE | FLOOR & WALL

WATER - EGGSHELL

BRUSHED NICKEL LTC



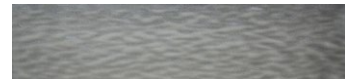
1" X 18" BULLNOSE
TILE496024011



12" X 18" TILE495024011



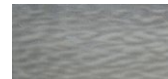
2" X 18" TILE497024011



4" X 18" TILE500024011



4" X 12" TILE499024011

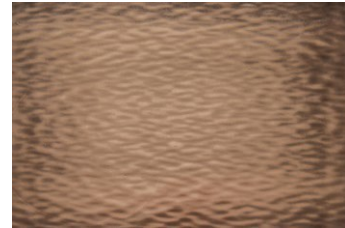


4" X 8" TILE498024011

BRONZE LTC



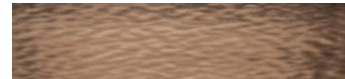
1" X 18" BULLNOSE
TILE496002011



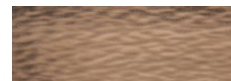
12" X 18" TILE495002011



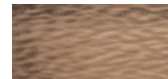
2" X 18" TILE497002011



4" X 18" TILE500002011



4" X 12" TILE499002011



4" X 8" TILE498002011

GOLD LTC



1" X 18" BULLNOSE
TILE496040011



12" X 18" TILE495040011



2" X 18" TILE497040011



4" X 18" TILE500040011



4" X 12" TILE499040011



4" X 8" TILE498040011

IRON LTC



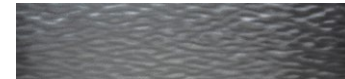
1" X 18" BULLNOSE
TILE496068011



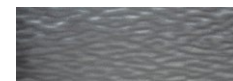
12" X 18" TILE495068011



2" X 18" TILE497068011



4" X 18" TILE500068011



4" X 12" TILE499068011



4" X 8" TILE498068011



*FOR FLOOR USE: LTC=LIGHT COMMERCIAL | RES=RESIDENTIAL

CITY SCAPE

FOR COMMERCIAL OR RESIDENTIAL USE | FLOOR & WALL

HAMMERED - POLISHED

BRUSHED NICKEL ^{RES}

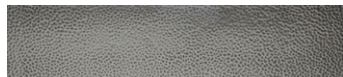
1" X 18" BULLNOSE
TILE508024001



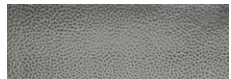
12" X 18" TILE507024001



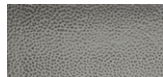
2" X 18" TILE509024001



4" X 18" TILE512024001



4" X 12" TILE511024001



4" X 8" TILE510024001

BRONZE ^{RES}

1" X 18" BULLNOSE
TILE508002001



12" X 18" TILE507002001



2" X 18" TILE509002001



4" X 18" TILE512002001



4" X 12" TILE511002001



4" X 8" TILE510002001

COPPER ^{RES}

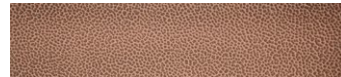
1" X 18" BULLNOSE
TILE508003001



12" X 18" TILE507003001



2" X 18" TILE509003001



4" X 18" TILE512003001



4" X 12" TILE511003001



4" X 8" TILE510003001

IRON ^{RES}

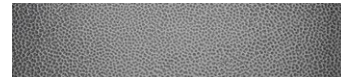
1" X 18" BULLNOSE
TILE508068001



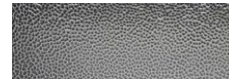
12" X 18" TILE507068001



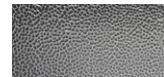
2" X 18" TILE509068001



4" X 18" TILE512068001



4" X 12" TILE511068001



4" X 8" TILE510068001



*FOR FLOOR USE: ^{LTC}=LIGHT COMMERCIAL | ^{RES}=RESIDENTIAL



CAST METAL COLLECTION

TILE & TRIM

[*<back to index*](#)

CAST METAL COLLECTION

TILE & TRIM | CAST METAL

WROUGHT IRON



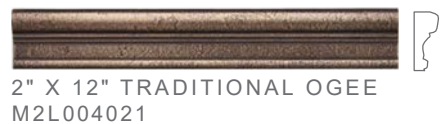
BRUSHED NICKEL



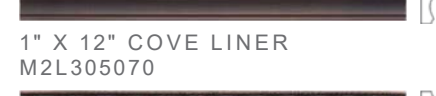
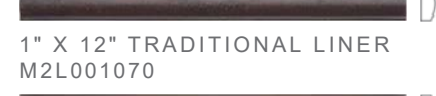
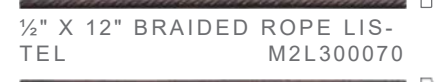
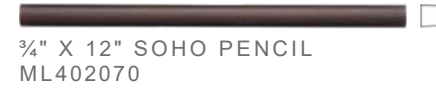
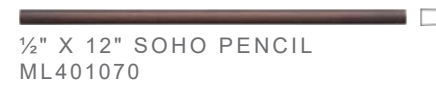
CAST METAL COLLECTION

TILE & TRIM | CAST METAL

ANTIQUÉ BRONZE



DARK OIL RUBBED BRONZE





MOSAICS

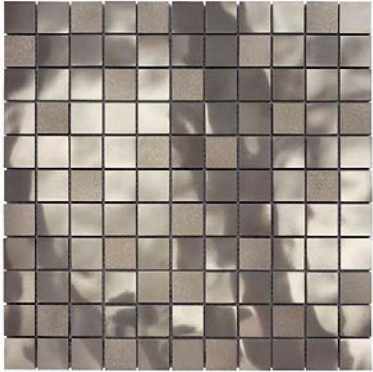
CAST METAL

[*<back to index*](#)

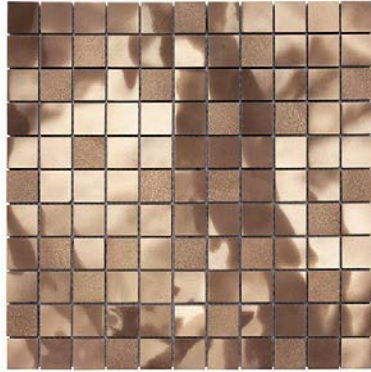
MOSAICS

CAST METAL

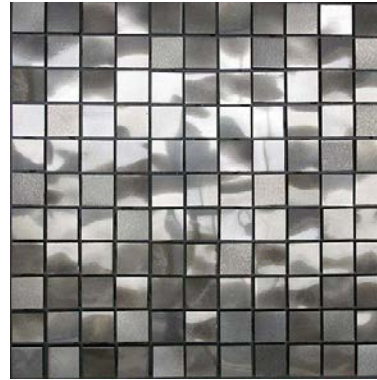
STARLIGHT | CAST METAL



11.75" X 11.75"
BRUSHED NICKEL
MOSA100-003



11.75" X 11.75"
ANTIQUE BRONZE
MOSA100-002



11.75" X 11.75"
WROUGHT IRON
MOSA100-001

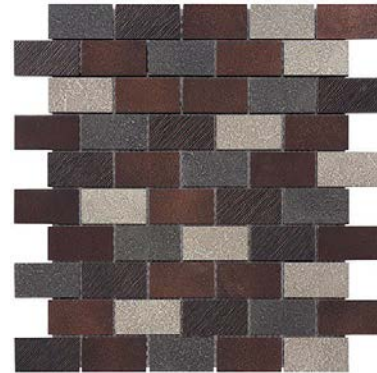
TWILL | CAST METAL



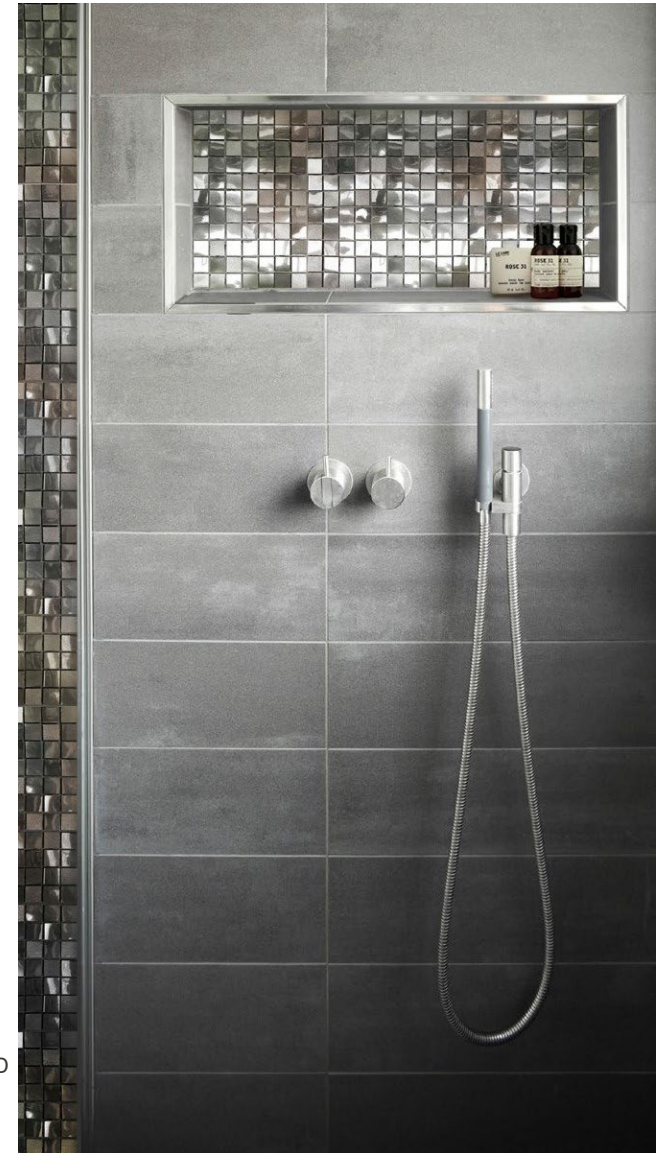
10.68" X 10.68"
BRUSHED NICKEL BLEND
MOSA200-005



10.68" X 10.68"
ANTIQUE BRONZE BLEND
MOSA200-006



10.68" X 10.68"
DARK OIL RUBBED BRONZE BLEND
MOSA200-004



MOSAICS

CAST METAL

VISTA | CAST METAL



11.75" X 10.62"
BRUSHED NICKEL BLEND
MOSA300-008



11.75" X 10.62"
ANTIQUE BRONZE BLEND
MOSA300-009



11.75" X 10.62"
DARK OIL RUBBED BRONZE BLEND
MOSA300-007





FAQ'S TECH SPECS INSTALLATION INSTRUCTIONS

[<back to index](#)

FREQUENTLY ASKED QUESTIONS

HOW ARE THE CAST METAL TILES, LINERS AND BATH ACCESSORIES MADE?

Made in the USA, the Cast Metal tiles and bath accessories are “Cast in Questech”, a proprietary composite of metal, resin and ceramic. The surface is real premium metal. Each tile and bath accessory comes from an original hand carved design.

HOW ARE THE CAST STONE TILES, LINERS AND BATH ACCESSORIES MADE?

Made in the USA, the Cast Stone tiles and bath accessories are “Cast in Questech”, a proprietary composite of crushed marble and resin. Each tile and bath accessory comes from an original hand carved design.

ARE THERE VARIATIONS IN TONE AND COLOR?

The Questech product will vary naturally from piece to piece. However, they do not vary from lot to lot like ceramic tile, and will always coordinate beautifully together.

WHERE CAN I USE THE TILES & LINERS?

They can be used on any interior wall, including wet areas. The tiles can also be used as a counter edge molding. Designated floor products may be used on both interior walls and residential/light commercial floors. Tiles are not suitable for counter top surfaces or exterior installations.

HOW DO I INSTALL THE TILES & LINERS?

Tiles that are “Cast in Questech” can be installed using standard tile setting methods (polymer fortified thin-set, epoxy and mastic). They cut easily with a wet saw or a spiral saw and can be drilled with a high-speed drill. Do not score and snap.

ARE THERE SPECIAL INSTALLATION SITUATIONS FOR TILE & LINERS?

To ensure proper bond, high temperature installations might require epoxy adhesive and grout. Examples where epoxy is recommended includes behind some kitchen cook-tops, fireplace surrounds and steam showers. See installation instructions for more information.

HOW DO I INSTALL THE FLAT BACK BATH ACCESSORIES?

Our Flat back bath accessories are designed for easy no cut installations over new & existing shower walls. They complement any ceramic, porcelain, metal and stone tile. Our Easy as 1, 2, 3 Installation instructions are included in every product box. Adhesive is sold separately; use either a Polyurethane Construction Adhesive or GEL Epoxy. See installation instructions for more information.

WHAT IS Q-SEAL™?

Questech tiles are protected by Q-Seal, a factory-applied, permanent sealer that is guaranteed to be water and stain resistant for as long as you own your home. The sealer also provides abrasion resistance and includes an anti-bacterial ingredient – Ultra-Fresh®, that inhibits the growth of mold and mildew.

WHAT HAPPENS IF I ACCIDENTALLY GET STONE OR GROUT SEALER ON THE QUESTECH PRODUCT?

Sealers cannot penetrate or adversely affect Q-Seal. Simply wipe excess sealer off the piece.

HOW DO I CLEAN THE TILES, LINERS AND BATH ACCESSORIES?

The surface can be cleaned with any ordinary household cleaner. Harsh chemicals like bleach should be wiped away shortly after application. Do not use abrasive implements for cleaning, for example, scouring pads and steel wool are not recommended.

THE QUESTECH ADVANTAGE

Q-SEAL

PROTECTED BY



Designed for longevity, all Questech products are permanently protected by Q-Seal, a revolutionary, non-toxic lifetime sealer. Q-Seal keeps your tiles and accessories looking as beautiful as the day they were installed, guaranteed. Providing an antimicrobial surface that protects against fingerprints, mold and mildew, Q-Seal is factory-applied and never needs re-sealing.

- Guaranteed to be water and stain resistant for as long as you own your home
- Features Ultra-Fresh antimicrobial protection – inhibits stain and odor-causing mold and mildew
- Safe for installation in wet areas
- Worry free cleaning – use any household cleaner



TECHNICAL PERFORMANCE SUMMARY

TEST	TEST METHOD	ANSI SPECIFICATION SUMMARY	QUESTECH RESULTS	PASS/FAIL
Bond Strength to Polymer Fortified Portland-Cement Mortar	ASTM C482	ANSI A137.1 50 PSI or greater	131 PSI	Pass
Breaking Strength	ASTM C648	ANSI A137.1 90 lbs. or greater	130-170 lbs. (¼" nominal thickness)	Pass
Facial Dimensions	ASTM C499	ANSI A137.1 Average facial dimension not to vary more than 4.0% from nominal Range of facial dimension not to exceed 0.6%	Average ≤ 4.0% Range/Max ≤ 0.6%	Pass
Coefficient of Friction (Floor Tile)	ASTM C1028-89 (withdrawn 2012) with no replacement ASTM standard	ANSI A137.1-2012 Section 9.61 for wet DCOF	<0.42	Approved for Dry & Level Interior Floors
Wedging	ASTM C502	ANSI A137.1 Not to exceed 0.6%	≤ 0.6%	Pass
Water Absorption	ASTM C373	ANSI A137.1 Not to exceed 20.0%	0.73%-1.21%	Pass
24 hr. Resistance to Household Chemical Substances	ASTM C650	No ANSI Specification	No effect. Ten (10) cleaning chemicals, two (2) base concentrations and two (2) acid concentrations	N/A
24 hr. Resistance to Staining	ASTM C1378	No ANSI Specification	No visual effect. Six (6) staining agents and two (2) cleaning procedures.	N/A
Surface Burning	ASTM E84-95b	No ANSI Specification	Class B	N/A
Surface Resistivity		No ANSI Specification	Questech is non-conductive	N/A

TILE, LINER & TRIM INSTALLATION, USE & CARE

Thank you for your purchase, please enjoy your new Questech product. Surface markings and natural color variations are inherent qualities of Questech Cast Stone and Cast Metal; adding to the beauty of all Questech products. Please inspect your product prior to installation.

INSTALLATION INSTRUCTIONS

Follow generally accepted good practices for installation of ceramic tile. Take careful note of following instructions specific to tiles Cast in Questech.

HIGH TEMPERATURE INSTALLATION INSTRUCTIONS

- Set tile with a water-cleanable epoxy mortar conforming to ANSI A118.3.
- Grout tile with a water-cleanable grouting epoxy conforming to ANSI A118.3.
- Follow setting and grouting instructions found in the installation instruction section of this document.

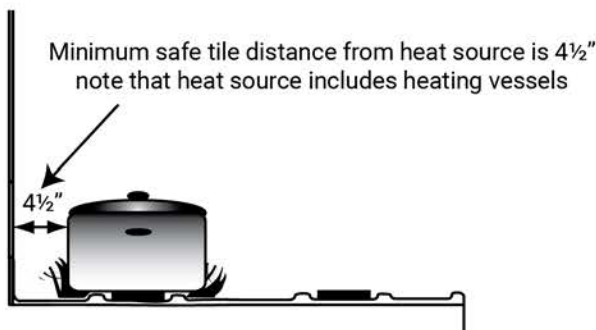
HIGH TEMPERATURE INSTALLATION

High-temperature installations are those where tiled surfaces will be subject to temperature 130°F (55°C) or greater. Common applications include: certain kitchen cook tops, fireplace surrounds, and steam rooms. Follow the high-temperature

installation instructions to ensure proper adhesion. *Important Note: Tiles are **NOT** recommended in areas where the tiled surface temperature will exceed 212°F (100°C). For example, do not install tiles as a heat shield behind a wood (or gas) stove.*

Behind Cook-Tops with out a Back Guard (or Back Mount Control Panel)

To ensure proper bond, maintain a minimum distance of 4 ½ inches between tiles surfaces and heat source. For the wall area directly behind and width 18 inches above the cooking surface, follow the high temperature installation instructions.



Fireplace Surrounds

To ensure proper bond, maintain a minimum distance of 6 inches from the fireplace opening. When used above and projecting more than 1 ½ inches from a fireplace face, maintain a minimum clearance of 12 inches above the fireplace opening. Consult state and local building codes to determine if more clearance is required in your area. Follow the high temperature installation instructions.

Steam Rooms

To ensure proper bond, follow the high temperature installation instructions.

Q-SEAL™ PERMANENT PROTECTION

Our products are protected by Q-Seal, a permanent sealer that is water and stain resistant and features Ultra-Fresh® antimicrobial protection that inhibits the growth of stain and odor-causing mold and mildew. Q-Seal is factory-applied and never needs re-sealing. For complete Questech warranty information please visit: www.Questech.com/Warranty.

CARE & MAINTENANCE

- To clean, use any ordinary household cleaner. For best results, a liquid, non-abrasive cleaner is recommended.
- Liquid abrasive household cleaners should only be used after being tested in a small area to ensure no damage results.
- Do NOT clean with scouring pads, steel wool, or other abrasive implements.
- Cleaners containing ammonia, bleach or other harsh chemicals should be wiped up shortly after application to avoid surface damage.



USE IN WET AREAS
ANTIMICROBIAL, SCRATCH & STAIN RESISTANT



THE FINISHING TOUCH



TYPICAL INSTALLATION

STEP 1 - SETTING

SETTING MATERIALS

Use the following setting materials for proper adhesion:

- Thin-Set: A liquid latex (polymer) fortified premium thin-set Portland cement mortar conforming to ANSI A118.4.
- Epoxy: A water-cleanable epoxy mortar conforming to ANSI A118.3.
- Mastics & Adhesives: A Type 1 organic adhesive conforming to ANSI A136.1 (examples: latex mastic adhesive; acrylic latex adhesive).

Note: Setting materials are sold separately

SETTING METHODS

- Follow adhesive manufacturer's instructions for preparation, mixing application, and cleanup.
- Trowel a layer of adhesive on the back of each tile prior to placing on the combed adhesive bed to obtain 100% coverage.
- Do NOT hammer the shelf in place with the butt-end of the trowel.

STEP 2 - CUTTING

CUTTING INSTRUCTIONS & SAFETY

Be sure to wear appropriate eye protection and an approved dust respirator when cutting, grinding, or drilling tiles.

- The tiles are best cut or mitered with a diamond abrasive wet-saw.
- Tiles can be drilled with a high-speed drill or a hole saw.
- Tiles can also be cut or drilled with a rotary saw (example: Roto Zip, Dremel).
- Do NOT use tile cutters designed to score and break tiles.

STEP 3 - GROUTING

GROUTING MATERIALS

Use the following grouting materials for proper adhesion:

- Cement: A liquid latex (polymer) fortified premium thin-set Portland cement mortar conforming to ANSI A118.6.
- Epoxy: A water-cleanable grouting epoxy conforming to ANSI A118.3.

GROUTING METHODS

- Follow grout manufacturer's instructions for preparation, mixing application, and cleanup.
- To help with cleanup, we recommend covering the tile surface with a high quality painter's tape.
- Clean-up residue as soon as possible after grouting. Grout that is allowed to harden may be difficult to remove.
- Do **NOT** use scouring pads, steel wool, sandpaper, or other abrasive implements to remove grout haze, or damage to the tile surface may result.



USE IN WET AREAS
ANTIMICROBIAL, SCRATCH & STAIN RESISTANT



THE FINISHING TOUCH



CITY SCAPE INSTALLATION, USE & CARE

LIGHT COMMERCIAL (FLOOR/WALL)
BURNISHED & WATER

RESIDENTIAL (FLOOR/WALL)
HAMMERED

Thank you for your purchase, please enjoy your new Questech product. Surface markings and natural color variations are inherent qualities of Questech Cast Stone and Cast Metal; adding to the beauty of all Questech products. Please inspect your product prior to installation.

APPLICATIONS

- LIGHT COMMERCIAL FLOOR (Burnished and Water) are recommended for dry and level interior floors.
- RESIDENTIAL FLOOR (Hammered) is recommended for dry and level interior floors.
- WET AREAS: **(FOR WALL ONLY)** Tiles can be installed in light commercial and residential wet areas such as backsplashes, bathroom walls and shower enclosures (including steam showers), but are **NOT** recommended in wet areas where pool chemicals are present (swimming pools, hot tubs, etc.)
- COUNTERTOPS: Tiles are **NOT** recommended for use as a surface for countertops.
- EXTERIOR: Tiles are **NOT** recommended for exterior applications.

SUBSTRATES

The performance of a properly installed tile application is dependent upon the durability and dimensional stability of the substrate to which it is bonded. Various substrate preparation methods are detailed in the Tile Council of North America's Handbook of Ceramic Tile Installation and are general in nature (www.tileusa.com).

SUB FLOORS

- Install floor tile over properly prepared concrete and wood sub floors.
- Wood sub floors should consist of 5/8" exterior grade plywood where joints offset, or ii) 1/2" + cementitious backer unit.

INSTALLATION INSTRUCTIONS

Follow generally accepted good practices for installation of ceramic tile. Take careful note of following instructions specific to tiles Cast in Questech.

HIGH TEMPERATURE INSTALLATION INSTRUCTIONS

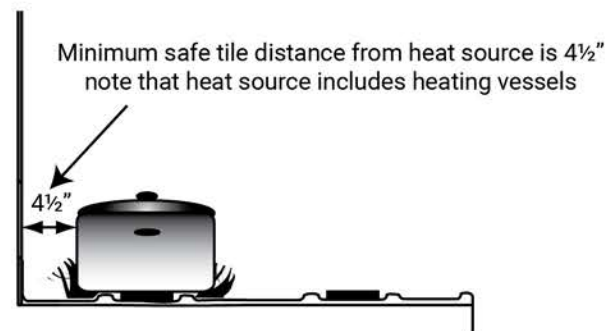
- Set tile with a water-cleanable epoxy mortar conforming to ANSI A118.3.
- Grout tile with a water-cleanable grouting epoxy conforming to ANSI A118.3.
- Follow setting and grouting instructions found in the installation instruction section of this document.

HIGH TEMPERATURE INSTALLATION

High temperature installations are those where tiled surfaces will be subject to temperature 130°F (55°C) or greater. Common applications include: certain kitchen cook tops, fireplace surrounds, and steam rooms. Follow the high-temperature installation instructions to ensure proper adhesion. *Important Note: Tiles are **NOT** recommended in areas where the tiled surface temperature will exceed 212°F (100°C). For example, do not install tiles as a heat shield behind a wood (or gas) stove.*

Behind Cook-Tops with out a Back Guard (or Back Mount Control Panel)

To ensure proper bond, maintain a minimum distance of 4 ½" between tiles surfaces and heat source. For the wall area directly behind and width 18" above the cooking surface, follow the high temperature installation instructions.



Steam Rooms

To ensure proper bond, follow the high temperature installation instructions.



USE IN WET AREAS
ANTIMICROBIAL, SCRATCH & STAIN RESISTANT



THE FINISHING TOUCH



Fireplace Surrounds

To ensure proper bond, maintain a minimum distance of 6" from the fireplace opening. When used above and projecting more than 1 1/2" from a fireplace face, maintain a minimum clearance of 12" above the fireplace opening. Consult state and local building codes to determine if more clearance is required in your area. Follow the high temperature installation instructions.

TYPICAL INSTALLATION

STEP 1 - SETTING

SETTING MATERIALS

Use the following setting materials for proper adhesion:

- Thin-Set: A liquid latex (polymer) fortified premium thin-set Portland cement mortar conforming to ANSI A118.4.
- Epoxy: A water-cleanable epoxy mortar conforming to ANSI A118.3.
- Mastics & Adhesives: A Type 1 organic adhesive conforming to ANSI A136.1 (examples: latex mastic adhesive; acrylic latex adhesive).

Note: Setting materials are sold separately.

SETTING METHODS

- Follow adhesive manufacturer's instructions for preparation, mixing application, and cleanup.
- Trowel a layer of adhesive on the back of

each tile prior to placing on the combed adhesive bed to obtain 100% coverage.

- Do **NOT** hammer the shelf in place with the butt-end of the trowel.

STEP 2 - CUTTING

CUTTING INSTRUCTIONS & SAFETY

Be sure to wear appropriate eye protection and an approved dust respirator when cutting, grinding, or drilling tiles.

- The tiles are best cut or mitered with a diamond abrasive wet-saw.
- Tiles can be drilled with a high-speed drill or a hole saw.
- Tiles can also be cut or drilled with a rotary saw (example: Roto Zip, Dremel).
- Do **NOT** use tile cutters designed to score and break tiles.

STEP 3 - GROUTING

GROUTING MATERIALS

Use the following grouting materials for proper adhesion:

- Cement: A liquid latex (polymer) fortified premium thin-set Portland cement mortar conforming to ANSI A118.6.
- Epoxy: A water-cleanable grouting epoxy conforming to ANSI A118.3.

GROUTING METHODS

- Follow grout manufacturer's instructions for preparation, mixing application, and cleanup.

- To help with cleanup, we recommend covering the tile surface with a high quality painter's tape.
- Clean-up residue as soon as possible after grouting. Grout that is allowed to harden may be difficult to remove.
- Do **NOT** use scouring pads, steel wool, sandpaper, or other abrasive implements to remove grout haze, or damage to the tile surface may result.

Q-SEAL™ PERMANENT PROTECTION

City Scape is protected by Q-Seal, a permanent sealer that is water and stain resistant and features Ultra-Fresh® antimicrobial protection that inhibits the growth of stain and odor-causing mold and mildew. Q-Seal is factory-applied and never needs re-sealing. For complete Questech warranty information please visit: www.Questech.com/Warranty.

CARE & MAINTENANCE

- To clean, use any ordinary household cleaner. For best results, a liquid, non-abrasive cleaner is recommended.
- Liquid abrasive household cleaners should only be used after being tested in a small area to ensure no damage results.
- Do **NOT** clean with scouring pads, steel wool, or other abrasive implements.
- Cleaners containing ammonia, bleach or other harsh chemicals should be wiped up shortly after application to avoid surface damage.



USE IN WET AREAS
ANTIMICROBIAL, SCRATCH & STAIN RESISTANT



THE FINISHING TOUCH



LUGGED BATH ACCESSORIES INSTALLATION, USE & CARE

Thank you for your purchase, please enjoy your new Bath Accessory. These products are designed with a lugged back to be inset into new construction of shower tile walls. Our corner shelves and bath accessories are available in various sizes, colors and designs to compliment any bathroom décor.

Surface markings and natural color variations are inherent qualities of Questech Cast Stone and Cast Metal; adding to the beauty of all Questech products. Please inspect your product prior to installation.



INSTALLATION INSTRUCTIONS

1. Following the adhesive manufacturer's instructions. **(SOLD SEPARATELY)**
2. Set wall tile to height shelf will be located.
3. Apply a layer of recommended adhesive on the lugs (teeth) of each shelf prior to placing on the combed adhesive bed to obtain 100% coverage.
4. Lugs should be pushed into adhesive to ensure good contact. The shelf's back should overlap the wall tile.
5. Continue wall installation around the shelf, noting that the shelf's back should overlap the wall tile.
6. Once adhesive is applied and the shelf is in place, support with painters tape until the adhesive sets.
7. Do NOT hammer the shelf in place with the butt-end of the trowel.

SETTING MATERIALS & ADHESIVES

Select one of the following two adhesives:

- Thin-Set: A liquid latex (polymer) fortified premium thin-set Portland cement mortar conforming to ANSIA118.4.
- Epoxy: A water-cleanable epoxy mortar conforming to ANSIA118.3.

Note: Setting materials are sold separately

Q-SEAL™ PERMANENT PROTECTION

Bath accessory surfaces are protected by Q-Seal, a permanent sealer that is water and stain resistant and features Ultra-Fresh® antimicrobial protection that inhibits the growth of stain and odor-causing mold and mildew. Q-Seal is factory-applied and never needs re-sealing. For complete Questech warranty information please visit: www.Questech.com/Warranty.

CARE & MAINTENANCE

- To clean, use any ordinary household cleaner. For best results, a liquid, non-abrasive cleaner is recommended.
- Liquid abrasive household cleaners should only be used after being tested in a small area to ensure no damage results.
- Do NOT clean with scouring pads, steel wool, or other abrasive implements.
- Cleaners containing ammonia, bleach or other harsh chemicals should be wiped up shortly after application to avoid surface damage.



USE IN WET AREAS
ANTIMICROBIAL, SCRATCH & STAIN RESISTANT



THE FINISHING TOUCH



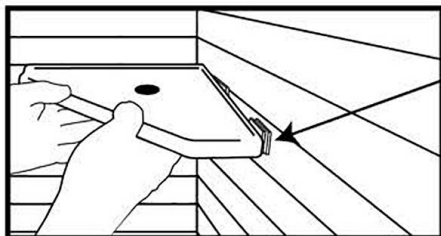
FLATBACK BATH ACCESSORIES INSTALLATION, USE & CARE

These products are designed for easy no-cut installation over new or existing shower tile walls. Available in various sizes, colors and designs to compliment any bathroom décor. Surface markings and natural color variations are inherent qualities of Questech Cast Stone, Cast Metal and Natural Stone; adding to the beauty of all Questech products. Please inspect your product prior to installation.

INSTALLATION INSTRUCTIONS

1. Locate position at desired height for install and mark it (use grout line when available and for easy clean up apply painter's tape along the top and bottom edge)
2. Use double sided foam tape tabs and place them on the specified areas on the back of shelf – remove paper tabs before installing.
3. Following the construction adhesive manufacturer's instructions, apply adhesive along guideline on back edge of shelf. **(SOLD SEPARATELY)**
4. Once adhesive is applied and the shelf is in place, support with painters tape until the adhesive sets.
5. Once fully cured, thoroughly caulk around the perimeter of the shelf to seal out water.

Note: Prior to installation, clean surface with alcohol. If corner is not square or has an irregular surface, use additional foam tape to ensure contact with the wall.



If corner is not 90° square, place additional tape tabs here.

APPROVED SUBSTRATES & SURFACES

- Marble, ceramic, glass, fiberglass reinforced wall panels and unpainted drywall

SETTING MATERIALS & ADHESIVES

Select one of the following adhesive types most suitable for your application, that is:

- Gap filling
- Water resistant
- Recommended for tile and stone
- Rapid set time

Note: Construction adhesives are sold separately

TWO-PART EPOXY GEL/PASTE ADHESIVE:

- Designed for vertical and overhead surfaces
 - No-run no drip formula
- RECOMMENDED
- Devcon 5 Minute Epoxy Gel
 - Laticrete Latapoxy 310 Stone Adhesive
 - Mapei Kerapoxy Adhesive
 - Custom Building EBM-Lite Premium Epoxy Bonding Mortar
 - Loctite Epoxy Gel

POLYURETHANE CONSTRUCTION ADHESIVE:

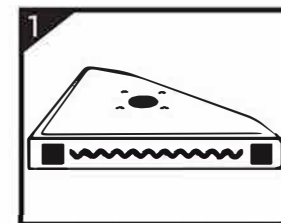
- 1 part polyurethane formula
- RECOMMENDED
- Loctite PL Premium Polyurethane
 - Loctite Premium Fast Grab Polyurethane
 - Sika Pro Select
 - Liquid Nails Polyurethane
 - Titebond Fast Set Polyurethane



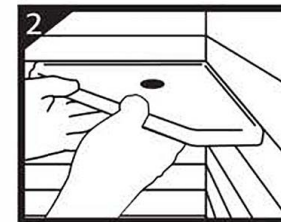
**QUICK VIDEO
INSTALLATION GUIDE**

Scan QR Code to watch video

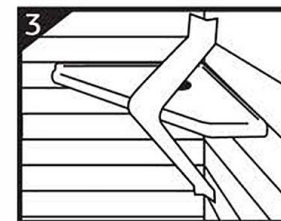
EASY 1-2-3 INSTALLATION



APPLY TAPE TABS & CONSTRUCTION ADHESIVE (SOLD SEPARATELY)



PRESS & HOLD



SUPPORT WITH TAPE FOR 24 HOURS

Q-SEAL™ PERMANENT PROTECTION

Bath accessory surfaces are protected by Q-Seal, a permanent sealer that is water and stain resistant and features Ultra-Fresh® antimicrobial protection that inhibits the growth of stain and odor-causing mold and mildew. Q-Seal is factory-applied and never needs re-sealing. For complete Questech warranty information please visit: www.Questech.com/Warranty

CARE & MAINTENANCE

- To clean, use any ordinary household cleaner. For best results, a liquid, non-abrasive cleaner is recommended.
- Liquid abrasive household cleaners should only be used after being tested in a small area to ensure no damage results.
- Do NOT clean with scouring pads, steel wool, or other abrasive implements.
- Cleaners containing ammonia, bleach or other harsh chemicals should be wiped up shortly after application to avoid surface damage.

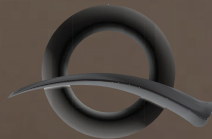


USE IN WET AREAS
ANTIMICROBIAL. SCRATCH & STAIN RESISTANT



THE FINISHING TOUCH





QUESTECH®

BOLICK DISTRIBUTORS

2055 N. Airway Dr.
Baton Rouge, LA 70815
225-927-8016

www.bolickdistributors.com

