

Community of courage and commitment to success

Thomas Estley Community College 

WELCOMES YOU



WHAT WE BELIEVE...

"At Thomas Estley, we believe in providing the best mix of support and challenge to help your child achieve their academic potential whilst maximising their wellbeing and growth as a young person, ready to tackle the complex and competitive world of further study and work. Our college works to 'Build Leadership and Character Together' as a 'Community of Courage and Commitment to Success', and we are passionate about developing young people who make a positive difference to the society around them whilst developing their own potential and overcoming barriers. We are fully committed to a learning environment which is inclusive of all abilities and needs, personalising learning within a family and community ethos. We have high standards of work and behaviour at the college, and we believe that the focus for each of our children is achieving their personal best, whatever that may be, and developing their confidence and passion in learning. Our core values are Courage, Respect, Kindness, Perseverance and Resilience, and they are embedded in all that we do.

Our specialist teaching staff provide a rich and well balanced curriculum including coverage of all traditional subjects as well as opportunities to develop additional skills for life, work and independence within extra elements such as our Year Nine Specialisms, our modular curriculum weeks and our wide-ranging extracurricular enrichment programme. Our Thomas Estley Leadership and Character curriculum is fully embedded into our provision, with a mix of leadership entitlement and extensive enhancement opportunities from Years Seven to Eleven. We are regularly approached to share best practice with a range of national and international visitors, and are the lead school in a teaching alliance of around thirty secondary and primary partners as well as a SSAT Leading Edge School. Our pursuit of excellence ranges from achieving high academic outcomes and linked destinations, including Russell Group University visits and programmes, through consistent development of local and national sports champions, to awards and accolades in Science, Maths, Languages, Engineering and the Arts.

The college is a vibrant, innovative and forward-looking institution, a place which never stands still but constantly seeks improvement. We are delighted to welcome visitors and prospective parents and students; please contact us if you would like to know more about the unique experience which we offer. We look forward to accompanying your child on their exciting learning journey towards success."

Mandi Collins – College Principal



OUR UNIQUE CURRICULUM

"Leaders provide pupils with a curriculum that is rich in opportunities and experiences, including a wide range of extra-curricular activities. Since its introduction, the key stage 4 curriculum has been refined to ensure that pupils' differing needs are met with a choice of different pathways"

Ofsted – January 2019

We ensure that learning is engaging and effective through establishing consistently high quality teaching and learning, and aim to develop our students into positive citizens through our enriched curriculum. We aim for every student to fulfil their potential, enjoy their learning experience and develop a positive set of values, leadership, and character traits needed to set them up for a successful future. We prioritise Kindness, Respect, Resilience, Perseverance and Courage in addition to our student leadership focus.

Thomas Estley has an excellent reputation, locally and nationally, for its innovative and high quality curriculum. We at Thomas Estley are extremely proud of our curriculum, delivering skills for life and work through a range of subject specialisms and cross-curricular modules. We are a SSAT leading Edge School. We work closely with feeder primary schools and local secondary schools to ensure smooth transition from primary to secondary through to sixth form for our students, with collaborative planning and provision particularly focused in Years 6–7 and during Year 11.

CURRICULUM SUBJECTS & FOCI

Students learn a wide range of subjects to experience a broad and balanced diet of knowledge and skills:

- English
- Maths
- Science
- History
- Geography
- French and Spanish
- Computing and IT
- Art
- Resistant Materials, CAD/CAM, Textiles & Food
- Physical Education
- Music, Drama & Dance
- Citizenship & Religious Education
- Personal, Social and Health Education including Sex & Relationship Education
- Careers & guidance
- Personal Development drop down days and module focus days to enhance PSHE, careers and SRE elements.

"The school is inclusive, providing for all pupils' needs and promoting a culture of tolerance and equality. Leaders are passionate about ensuring that the school is inclusive for all. They work hard to make all pupils welcome."
Ofsted - January 2019

As well as the above, in year 9, students opt into a Specialism which takes place once a week. Specialisms develop students' skills and leadership development, in a context of their choosing.

IMPACT OF OUR CURRICULUM



We are proud to have achieved outcomes above or well above national and local averages over the last four years across all key performance indicators. The main performance indicator for secondary schools is progress 8, which reflects value added across the five years a child is in secondary school, from their end of primary school individual starting point and across all subject areas. A score of 0 means that the child has made average progress in all areas compared with all schools nationally. A score of +0.25 means that the child has achieved a quarter of a grade higher than expected in every area, given their end of primary school starting points.

In 2022, our progress 8 score was +0.47

In 2023, our progress 8 score was +0.24

Full information about our curriculum outcomes in Year Eleven can be found here:

[Secondary – Thomas Estley Community College – Compare school and college performance data in England – GOV.UK \(compare-school-performance.service.gov.uk\)](https://compare-school-performance.service.gov.uk)

EXTRA-CURRICULAR

Cricket

A few of our current clubs are pictured and listed here...

IT Club

Rounders,
athletics and
basketball

Photography Club

Young Reporters

Drumming
&
Guitar

Boys & Girls
football

BROUGHTON
ASTLEY
SEA CADETS

Dr Who Club

"The Trust's mission of 'building leadership and character' is clearly evident throughout all years. Pupils develop their leadership skills, for instance through being sports and language leaders, joining the Sea Cadets or taking part in the Duke of Edinburgh's Award programme."

Ofsted - January 2019

EDUCATIONAL VISITS

Residentials and visits include opportunities such as...

Natural History
Museum

Blenheim Palace

Theatre trips

Stratford-Upon-Avon



Spain (ski trip)



Geneva



Paris



London

University trips

Bletchley Park

The Yorkshire Sculpture Park

Drayton Manor & Alton Towers

STUDENT CARE

Student Voice

Gathering student voice is a regular feature of our work. Our student voice groups and surveys allow students to put forward their ideas and opinions and participate in decision making at the college and our **Student Ambassadors** meet regularly to bring about student-led change.

Student panels are a regular feature of staff interviews and many of our policies and procedures take student views into account.



"Leaders ensure that students' spiritual moral, social and cultural understanding is an integral part of school life. Students develop as well-rounded individuals who value diversity and equality, across a range of different religions and cultures.

in the words of one parent - 'My child is happy and maturing well with kindness and tolerance'

Ofsted - January 2019



STUDENT CARE

Student Care & Guidance

On admission, students are assigned to a tutor group. The tutor is the first point of contact for any pastoral concerns. Our tutor groups are organised vertically in KS3, including students from Years 7–9, to support confidence and inclusion.

Tutor groups belong to one of our four college teams each led by a Team Leader, who supports students to overcome any barriers to learning in order to achieve their full potential.

The Pastoral Team work in partnership with parents as well as other agencies to ensure good behaviour and attendance.

Positive Behaviour for Learning –

‘We will act, in co-operation and collaboration, with courtesy and consideration for others at all times’.



STUDENT CARE

Inclusion and Wellbeing

Our aim is to ensure that every child, whatever their individual needs, achieves their potential through a wide range of learning opportunities and that provision is made to help young people feel that they are in every way a part of life of the college. Our Inclusion Support Zone and Well-being Zone enhance our offer.

The Oaks at Thomas Estley

The Oaks is a SEND Resource Base for a small group of young people with communication and interaction specialist EHCPS who join the main community for most learning and activities while experiencing a range of extra support and opportunities.

The Centre

We are proud of our longstanding and strong partnership with a local Special school, welcoming young people into mainstream classes and activities.



STUDENT CARE

Kindness and Respect for others

We celebrate Kindness and Respect through our Positive Choices recognition system, Student Wellbeing Ambassadors and Community Kindness Ambassadors work with adults to ensure kind behaviour in the college. Bullying is taken seriously and dealt with promptly.

Safeguarding

The safeguarding of our students is paramount and is at the core of everything that we do at Thomas Estley.

Our safe guarding team are on hand to offer support when required.

We teach all students about the importance of keeping themselves safe through lessons, assemblies, theatre productions and in liaison with the Leicestershire Police.



"Pupils feel safe in school and are taught how to stay safe.

Bullying is rare.

Pupils are able to identify different types of bullying. Most say they have an adult to talk with if they have any concerns.

They are confident that any issues would be resolved."

Ofsted – January 2019



OUR SENIOR LEADERSHIP TEAM



Mandi Collins
Principal



Maxine Young
Vice Principal



Cathy Cornelius
Vice Principal



Richard Wheller
College Manager



Janine Hartley
Assistant Principal



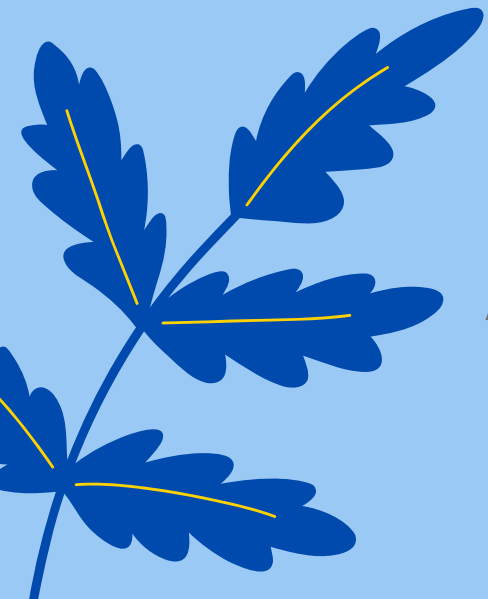
Edward Timmins
Assistant Principal



Hayley Briggs
Assistant Principal



Emilia Plumb
Director of Inclusion



BUILDING
LEADERSHIP AND
CHARACTER
TOGETHER

ADMISSIONS

Starting at Secondary School

BUILDING
LEADERSHIP AND
CHARACTER
TOGETHER

If your child is in Year Five and you would like to select Thomas Estley as your child's secondary school or are interested in finding out more, you can:

- Find out more about us by visiting our website and Facebook page.
- Contact us to book a place on our Open College days including a tour of the college in action.
- Contact us to book a place on our September Open College evening with a chance to see each area of the college, hear more about us and speak to our current students and teachers.
- Apply at – **<https://www.leicestershire.gov.uk/education-and-children/schools-colleges-and-academies/school-admissions/apply-for-a-secondary-school-place>** for a place to start in Autumn 2026

(the deadline is October 31 2024)

BUILDING
LEADERSHIP AND
CHARACTER
TOGETHER

ADMISSIONS

Starting at Secondary School

BUILDING
LEADERSHIP AND
CHARACTER
TOGETHER

If your child is in **Year Six** and you would like to select Thomas Estley as your child's secondary school or are interested in finding out more, the admissions deadline for an Autumn 2024 start has now passed and your application will be treated as a late application.

- Apply <https://www.leicestershire.gov.uk/education-and-children/schools-colleges-and-academies/school-admissions/apply-for-a-secondary-school-place>
- Contact us to speak to us about arranging a visit and/or discussion with us.

If your child is in **Year Four** or below, and you are interested in finding out about us, you can:

- Find out more about us by visiting our website and Facebook page.
- Contact us to book a place on our September Open College evening with a chance to see each area of the college, hear more about us and speak to our current students and teachers.

OUR GOVERNORS

College governors support the strategic leaders of **Thomas Estley Community College**. Governors provide robust challenge to school leaders and hold them to account for pupils' outcomes, but they also provide support to the Principal and school.

An effective Governing Board has the opportunity to support children in their community to develop into confident, self-assured, resilient young people who leave school having experienced a good quality education that prepares them for all aspects of their life ahead.

Volunteering as a governor does mean a time commitment – preparing for and attending meetings, additional school visits for monitoring purposes, writing reports, and of course, your own training and continuing professional development.

To find out more about our Trust Governance arrangements please visit [Thomas Estley Community College governance page](#).



SUCCESS ACADEMY TRUST

Success Academy Trust is a multi academy trust providing learning for children and young people aged from 2 to 16 years, including primary and secondary schools as well as preschools. We focus on improving school performance, while building leadership and character together.

We are passionate about the power of leadership and character development to maximise life chances, to build wellbeing and confidence, and to equip our young people, whatever their background, ability, interest or need, to make a positive difference in their local community and beyond. We believe that alongside great academic results, this focus ensures that our children will grow to shape the world around them, to make it a fairer, kinder and better place to live in. We believe that our focus on Building Leadership and Character together for both children and adults makes us a special place to work and to learn.

CONTACT US

Please contact us or if you require more detailed information –



01455 283 263



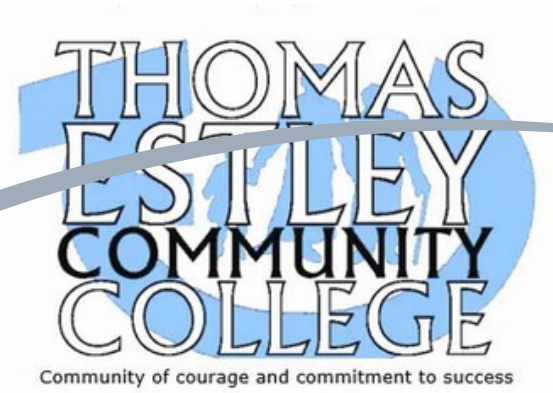
patotheprincipal@thomasestley.org.uk



www.thomasestley.org.uk



**Station Road, Broughton Astley,
Leicester LE9 6PT**



THANK YOU FOR TAKING A LOOK!

