

Community of courage and commitment to success

Thomas Estley Community College



WELCOMES YOU

Part of Success Academy Trust
Building Leadership and Character Together



WHAT WE BELIEVE...

"At Thomas Estley, we believe in providing the best mix of support and challenge to help your child achieve their academic potential whilst maximising their wellbeing and growth as a young person, ready to tackle the complex and competitive world of further study and work. Our college works to 'Build Leadership and Character Together' as a 'Community of Courage and Commitment to Success', and we are passionate about developing young people who make a positive difference to the society around them whilst developing their own potential and overcoming barriers. We are fully committed to a learning environment which is inclusive of all abilities and needs, personalising learning within a family and community ethos. We have high standards of work and behaviour at the college, and we believe that the focus for each of our children is achieving their personal best, whatever that may be, and developing their confidence and passion in learning. Our core values are Courage, Respect, Kindness, Perseverance and Resilience, and they are embedded in all that we do.

Our specialist teaching staff provide a rich and well balanced curriculum including coverage of all traditional subjects as well as opportunities to develop additional skills for life, work and independence within extra elements such as our Year Nine Specialisms, our modular curriculum weeks and our wide-ranging extracurricular enrichment programme. Our Thomas Estley Leadership and Character curriculum is fully embedded into our provision, with a mix of leadership entitlement and extensive enhancement opportunities from Years Seven to Eleven. We are regularly approached to share best practice with a range of national and international visitors, and are the lead school in a teaching alliance of around thirty secondary and primary partners as well as a SSAT Leading Edge School. Our pursuit of excellence ranges from achieving high academic outcomes and linked destinations, including Russell Group University visits and programmes, through consistent development of local and national sports champions, to awards and accolades in Science, Maths, Languages, Engineering and the Arts.

The college is a vibrant, innovative and forward-looking institution, a place which never stands still but constantly seeks improvement. We are delighted to welcome visitors and prospective parents and students; please contact us if you would like to know more about the unique experience which we offer. We look forward to accompanying your child on their exciting learning journey towards success."

Mandi Collins – College Principal



OUR UNIQUE CURRICULUM

"The school prioritises pupils' wider personal development.
There is a well-considered programme that helps pupils develop their character and leadership skills."
Ofsted - 2024

We ensure that learning is engaging and effective through establishing consistently high quality teaching and learning, and aim to develop our students into positive citizens through our enriched curriculum. We aim for every student to fulfil their potential, enjoy their learning experience and develop a positive set of values, leadership, and character traits needed to set them up for a successful future. We prioritise Kindness, Respect, Resilience, Perseverance and Courage in addition to our student leadership focus.

Thomas Estley has an excellent reputation, locally and nationally, for its innovative and high quality curriculum. We at Thomas Estley are extremely proud of our curriculum, delivering skills for life and work through a range of subject specialisms and focused input. We are a SSAT leading Edge School. We work closely with feeder primary schools and local secondary schools to ensure smooth transition from primary to secondary through to sixth form for our students, with collaborative planning and provision particularly focused in Years 6-7 and during Year 11.

Full information about our curriculum outcomes in Year Eleven can be found here:

[Secondary - Thomas Estley Community College - Compare school and college performance data in England - GOV.UK \(compare-school-performance.service.gov.uk\)](#)

CURRICULUM SUBJECTS & FOCI

Students learn a wide range of subjects to experience a broad and balanced diet of knowledge and skills:

- English
- Maths
- Science
- History
- Geography
- French and Spanish
- Computing and IT
- Art
- Resistant Materials, CAD/CAM, Textiles & Food
- Physical Education
- Music, Drama & Dance
- Social Studies & Religious Education
- Personal, Social and Health Education including Sex & Relationship Education
- Careers & guidance
- Personal Development drop down days and module focus days to enhance PSHE, careers and SRE elements.

As well as the above, in year 9, students opt into a Specialism which takes place once a week. Specialisms develop students' skills and leadership development, in a context of their choosing.

"The school has developed a broad and ambitious curriculum. It is organised in a way that helps pupils build on what they have learned previously. A small number of pupils, including those in the specially resourced provision for pupils with SEND, benefit from personalised learning pathways. The school is aspirational for all pupils. There are high expectations for pupils' academic achievements.

Ofsted 2024

INCLUSION

Inclusion and Wellbeing

Our aim is to ensure that every child, whatever their individual needs, achieves their potential through a wide range of learning opportunities and that provision is made to help young people feel that they are in every way a part of life of the college. Our Inclusion Support Zone and Well-being Zone enhance our offer.



The Oaks at Thomas Estley

The Oaks is a SEND Resource Base for a small group of young people with communication and interaction specialist EHCPS who join the main community for most learning and activities while experiencing a range of extra support and opportunities.

The Centre

We are proud of our longstanding and strong partnership with a local Special school, welcoming young people into mainstream classes and activities.

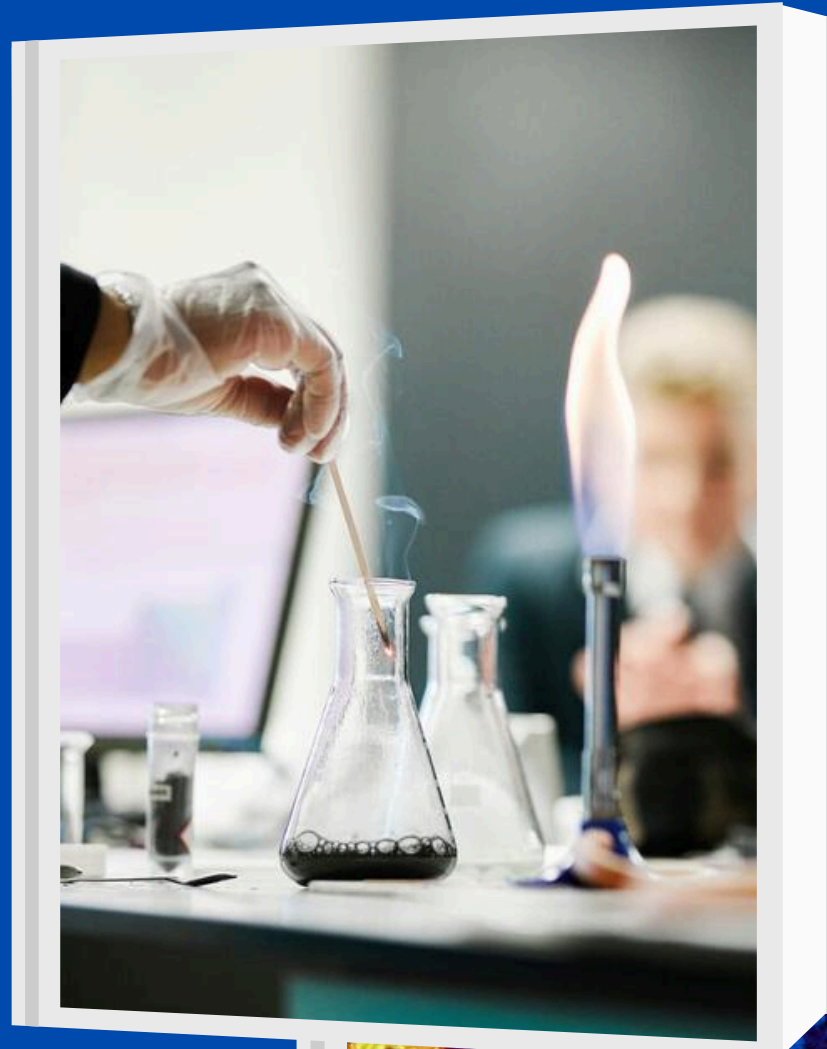


"The school has developed a broad and ambitious curriculum. It is organised in a way that helps pupils build on what they have learned previously. A small number of pupils, including those in the specially resourced provision for pupils with SEND, benefit from personalised learning pathways- **Ofsted 2024**

EXTRA-CURRICULAR

Cricket

A few of our current clubs are pictured and listed here...



IT Club

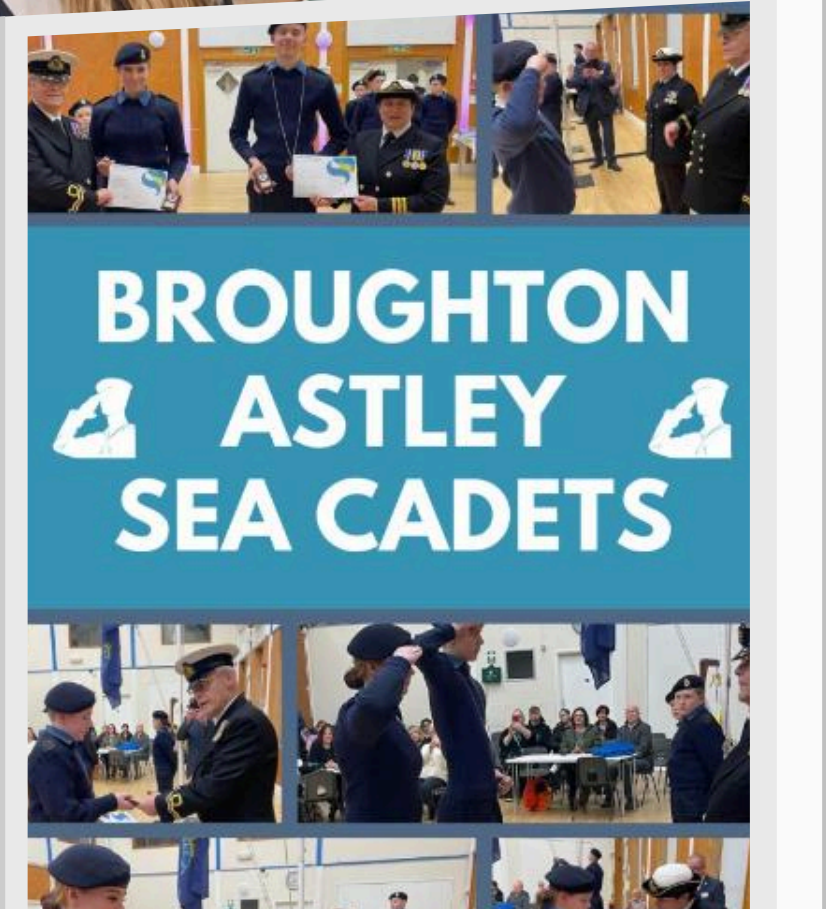


Photography Club

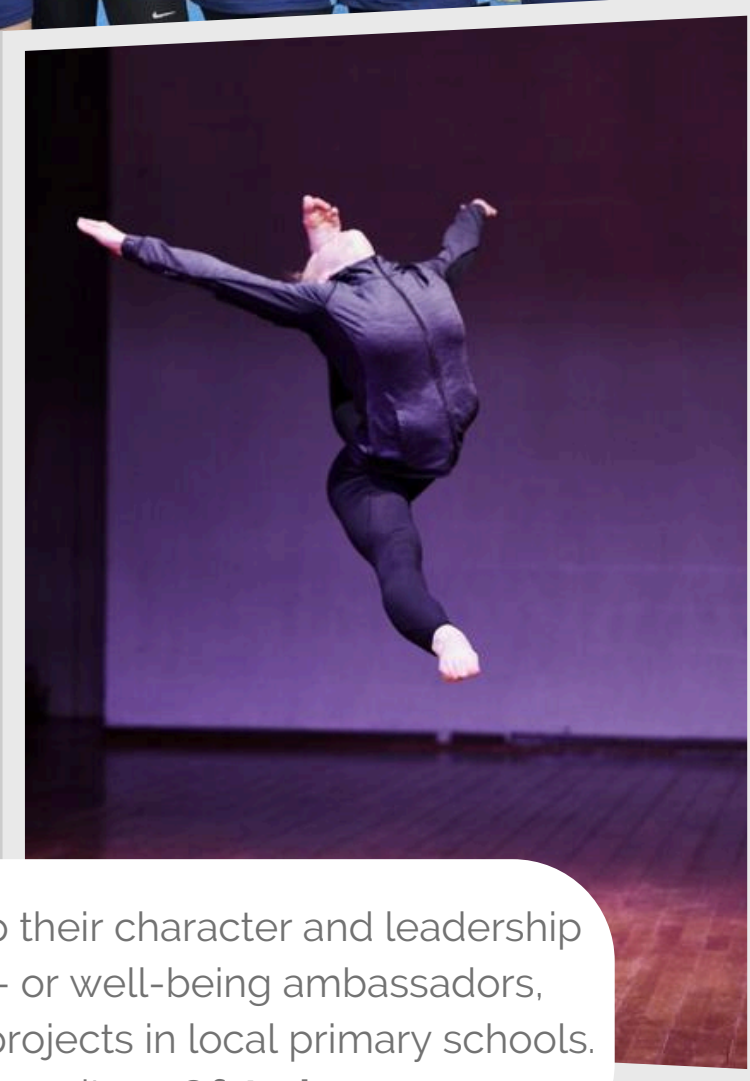


Young Reporters

Rounders, athletics and basketball



Dr Who Club



Drumming & Guitar

Boys & Girls football

The school prioritises pupils' wider personal development. There is a well-considered programme that helps pupils develop their character and leadership skills. This includes a wide range of opportunities. For example, pupils can take on roles of responsibility, including as eco- or well-being ambassadors, teaching and learning researchers, or preschool readers. In the wider community, pupils are involved with charity work and projects in local primary schools. A variety of clubs support the development of pupils' talents and interests in sport, the performing arts and other pursuits. - **Ofsted 2024**

EDUCATIONAL VISITS

Residentials and visits include opportunities such as...

Natural History
Museum

Blenheim Palace

Theatre trips

Stratford-Upon-Avon



Austria (ski trip)



Geneva



Paris



London

University trips

Bletchley Park

The Yorkshire Sculpture Park

Drayton Manor & Alton Towers

STUDENT CARE

Student Voice

Gathering student voice is a regular feature of our work.

Our student voice groups and surveys allow students to put forward their ideas and opinions and participate in decision making at the college and our **Student Ambassadors** meet regularly to bring about student-led change.

Student panels are a regular feature of staff interviews and many of our policies and procedures take student views into account.



Your
VOICE
MATTERS

“The ‘**Thomas Estley Way**’ guides pupils to show kindness, respect, courage, perseverance and resilience in classrooms and around the school.

This is the foundation for a culture of mutual respect.

Pupils are happy.

Relationships between pupils and staff are strong.”

Ofsted - 2024

STUDENT CARE

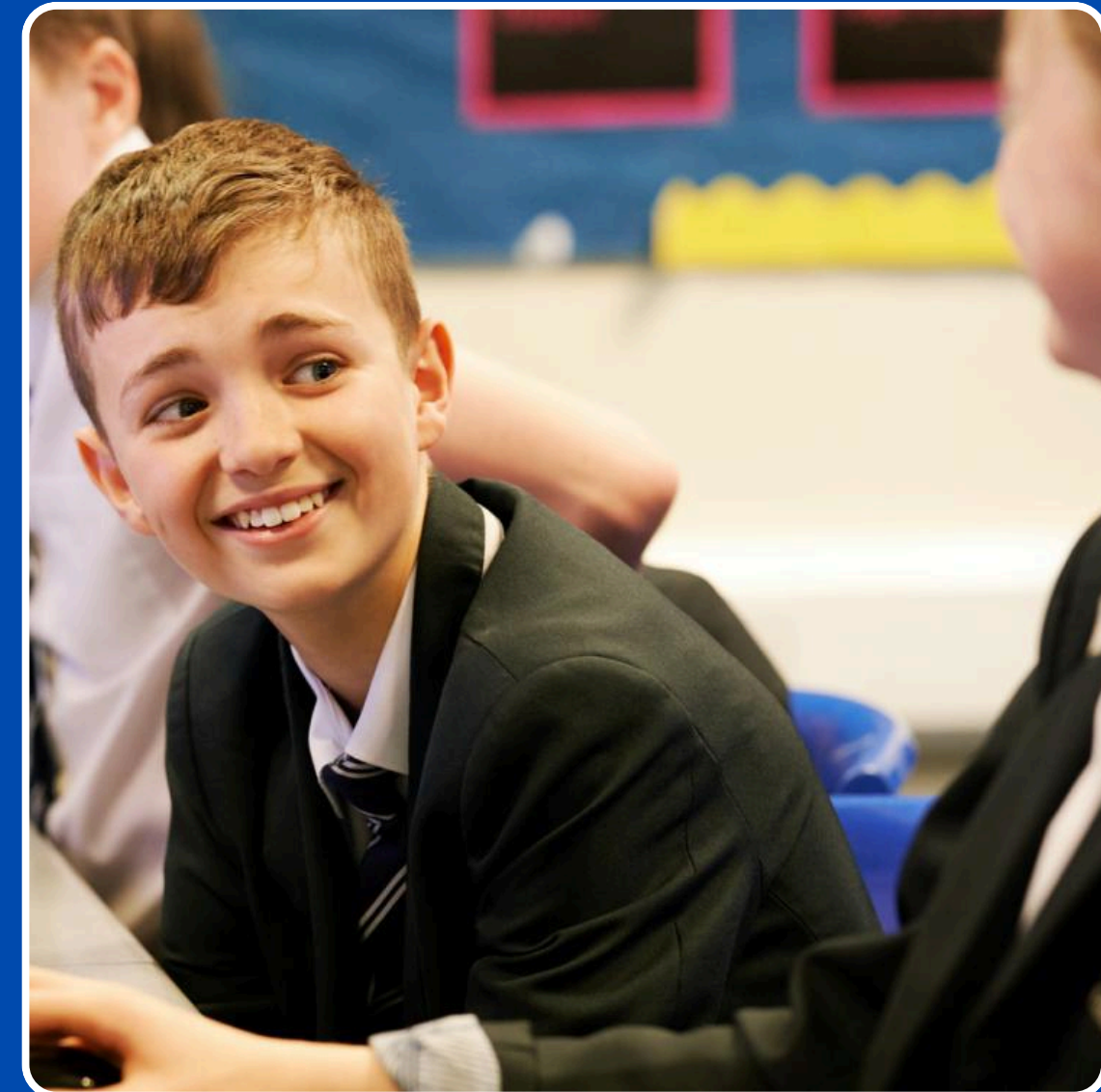
Student Care & Guidance

On admission, students are assigned to a tutor group. The tutor is the first point of contact for any pastoral concerns. Our tutor groups are organised vertically in KS3, including students from Years 7–9, to support confidence and inclusion.

Tutor groups belong to one of our four college teams each led by a Team Leader, who supports students to overcome any barriers to learning in order to achieve their full potential.

The Pastoral Team work in partnership with parents as well as other agencies to ensure good behaviour and attendance.

Positive Behaviour for Learning –
‘We will act, in co-operation and collaboration, with courtesy and consideration for others at all times’.



Pupils benefit from high-quality pastoral guidance. They trust staff to keep them safe - **Ofsted 2024**



STUDENT CARE

Kindness and Respect for others

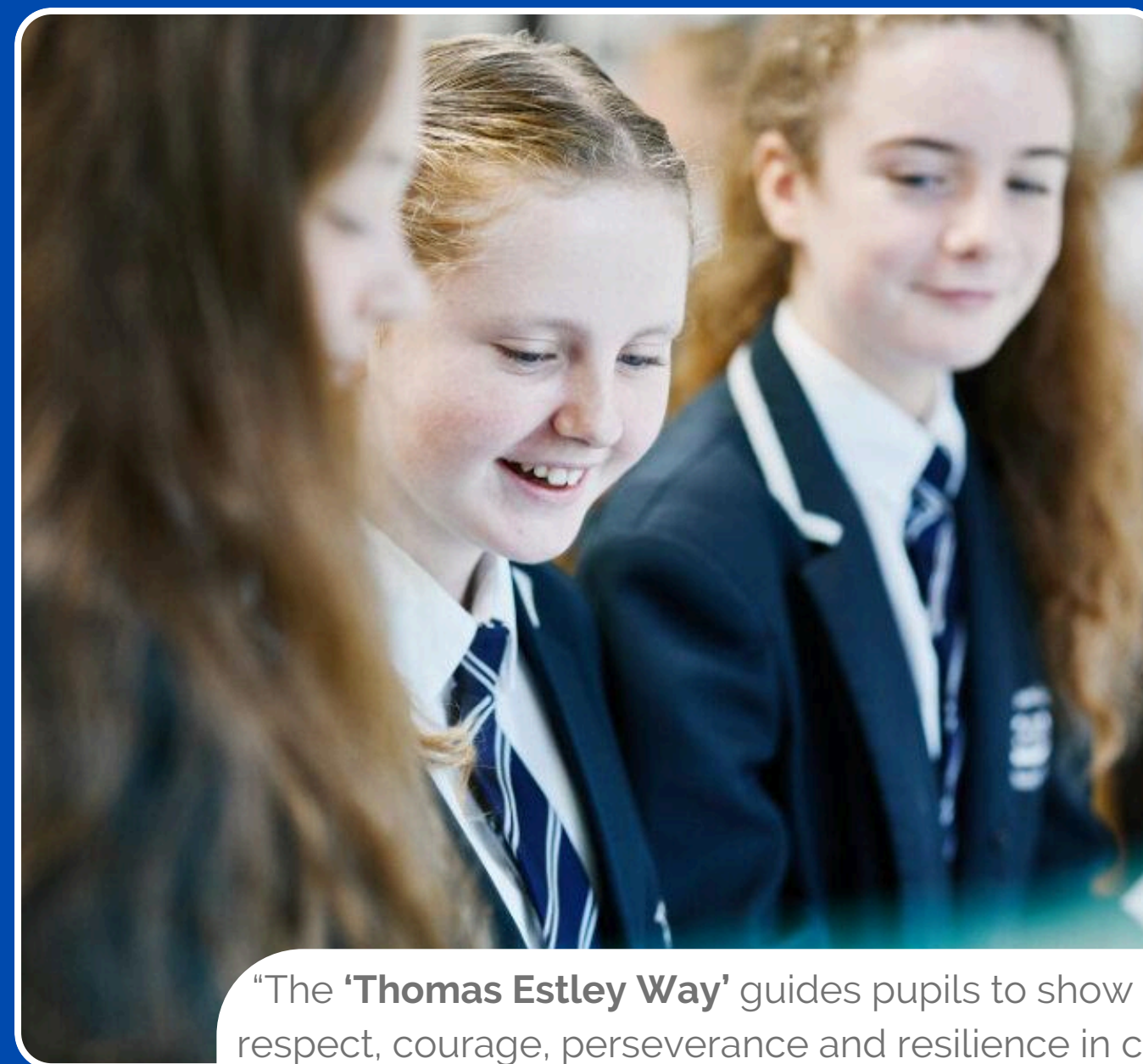
We celebrate Kindness and Respect through our Positive Choices recognition system, Student Wellbeing Ambassadors and Community Kindness Ambassadors work with adults to ensure kind behaviour in the college. Bullying is taken seriously and dealt with promptly.

Safeguarding

The safeguarding of our students is paramount and is at the core of everything that we do at Thomas Estley.

Our safe guarding team are on hand to offer support when required.

We teach all students about the importance of keeping themselves safe through lessons, assemblies, theatre productions and in liaison with the Leicestershire Police.



"The '**Thomas Estley Way**' guides pupils to show kindness, respect, courage, perseverance and resilience in classrooms and around the school. This is the foundation for a culture of mutual respect.

Pupils are happy. Relationships between pupils and staff are strong."

Ofsted - 2024



OUR SENIOR LEADERSHIP TEAM



Mandi Collins
Principal



Maxine Young
Vice Principal



Cathy Cornelius
Vice Principal



Janine Hartley
Assistant Principal



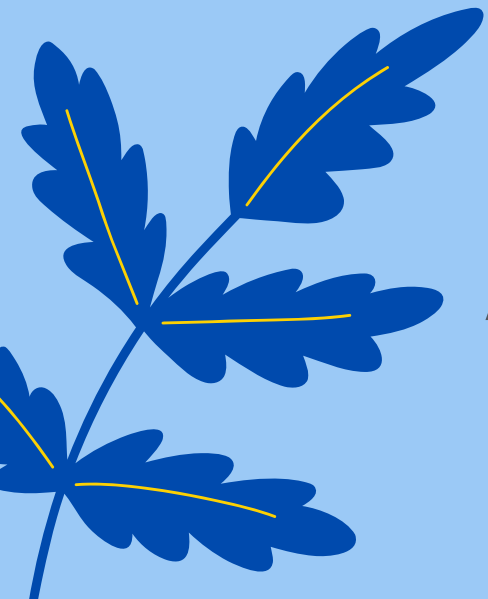
Edward Timmins
Assistant Principal



Emilia Plumb
Director of Inclusion



Richard Wheller
College Manager



BUILDING
LEADERSHIP AND
CHARACTER
TOGETHER

ADMISSIONS

Starting at Secondary School

BUILDING
LEADERSHIP AND
CHARACTER
TOGETHER

If your child is in Year Five and you would like to select Thomas Estley as your child's secondary school or are interested in finding out more, you can:

- Find out more about us by visiting our website and Facebook page.
- Contact us to book a place on our Open College days including a tour of the college in action.
- Contact us to book a place on our September Open College evening with a chance to see each area of the college, hear more about us and speak to our current students and teachers.
- Apply at - <https://www.leicestershire.gov.uk/education-and-children/schools-colleges-and-academies/school-admissions/apply-for-a-secondary-school-place> for a place to start in Autumn 2027

(the deadline is October 31 2026)

BUILDING
LEADERSHIP AND
CHARACTER
TOGETHER

ADMISSIONS

Starting at Secondary School

BUILDING
LEADERSHIP AND
CHARACTER
TOGETHER

If your child is in **Year Six** and you would like to select Thomas Estley as your child's secondary school or are interested in finding out more, the admissions deadline for an Autumn 2026 start has now passed and your application will be treated as a late application.

- Apply <https://www.leicestershire.gov.uk/education-and-children/schools-colleges-and-academies/school-admissions/apply-for-a-secondary-school-place>
- Contact us to speak to us about arranging a visit and/or discussion with us.

If your child is in **Year Four** or below, and you are interested in finding out about us, you can:

- Find out more about us by visiting our website and Facebook page.
- Contact us to book a place on our September Open College evening with a chance to see each area of the college, hear more about us and speak to our current students and teachers.

OUR GOVERNORS

College governors support the strategic leaders of **Thomas Estley Community College**.

Governors provide robust challenge to school leaders and hold them to account for pupils' outcomes, but they also provide support to the Principal and school.

An effective Governing Board has the opportunity to support children in their community to develop into confident, self-assured, resilient young people who leave school having experienced a good quality education that prepares them for all aspects of their life ahead.

Volunteering as a governor does mean a time commitment – preparing for and attending meetings, additional school visits for monitoring purposes, writing reports, and of course, your own training and continuing professional development.

To find out more about our Trust Governance arrangements please visit [Thomas Estley Community College governance page](#).

“Trustees and governors are knowledgeable. They hold school leaders to account and share the school’s aspirations.”

Ofsted – 2024



SUCCESS ACADEMY TRUST

Success Academy Trust is a multi academy trust providing learning for children and young people aged from 2 to 16 years, including primary and secondary schools as well as preschools. We focus on improving school performance, while building leadership and character together.

We are passionate about the power of leadership and character development to maximise life chances, to build wellbeing and confidence, and to equip our young people, whatever their background, ability, interest or need, to make a positive difference in their local community and beyond. We believe that alongside great academic results, this focus ensures that our children will grow to shape the world around them, to make it a fairer, kinder and better place to live in. We believe that our focus on Building Leadership and Character together for both children and adults makes us a special place to work and to learn.

CONTACT US

Please contact us or if you require more detailed information -



01455 283 263



patotheprincipal@thomasesstley.org.uk

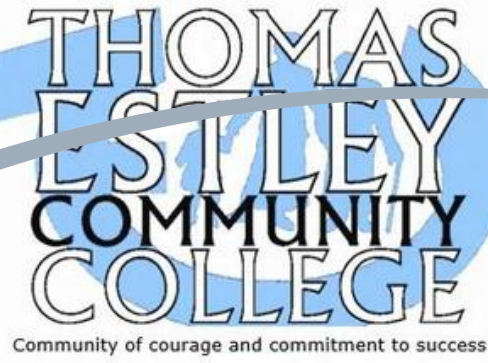


www.thomasesstley.org.uk



**Station Road, Broughton Astley,
Leicester LE9 6PT**





THANK YOU FOR TAKING A LOOK!





Follow us on Linked In
Thomas Estley Community College



**FOLLOW US ON
FACEBOOK**

@thomasestleycommunitycollege



