



Manufacturing and installation of the highest-quality
GARDEN STUDIOS

S4+

4.8m x 3.5m

Transform your outdoor space with our affordable and versatile blank canvas studios.

Well-suited for a yoga or fitness room, or a social space, providing a functional, year-round area.

- ✓ Fast installation by expert and approved fitters.
- ✓ 10-year structural guarantee for peace of mind.
- ✓ 3 high-quality specifications to choose between.
- ✓ Fully-insulated for year-round use.
- ✓ Delivery within 12 working days.
- ✓ Groundwork kits and guttering included as standard.
- ✓ Stylish 'scandi' internal finish for added comfort.



The above depiction is of the S4+ line (in the Signature specification) and is provided solely for illustrative purposes.

S4+ | HERITAGE



[Detail on pages 2 to 4](#)

Overview:

- ✓ Redwood timber cladding
- ✓ 25mm thermal insulation
- ✓ 100mm insulated roof panels
- ✓ PVC entry door with side light
- ✓ PVC opening windows

S4+ | SIGNATURE



[Detail on pages 5 to 7](#)

Overview:

- ✓ Horizontal composite cladding
- ✓ 25mm thermal insulation
- ✓ 100mm insulated roof panels
- ✓ PVC French door
- ✓ PVC opening windows

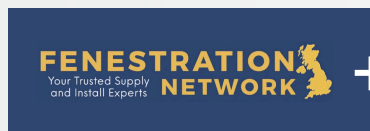
S4+ | PREMIUM



[Detail on pages 8 to 10](#)

Overview:

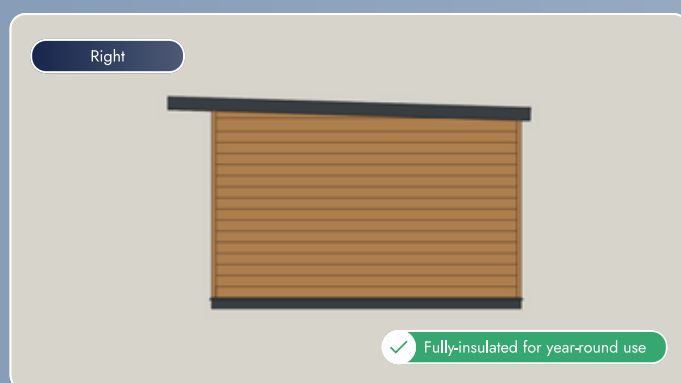
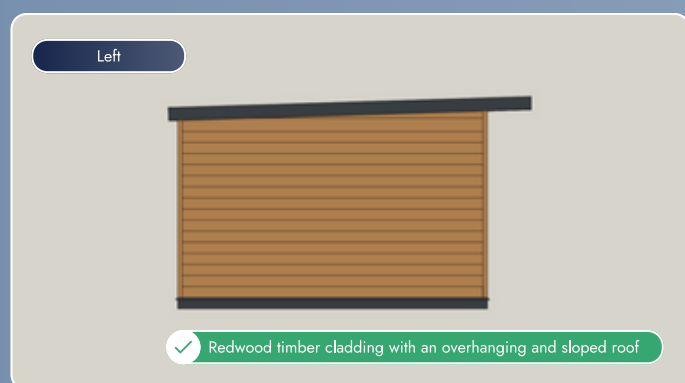
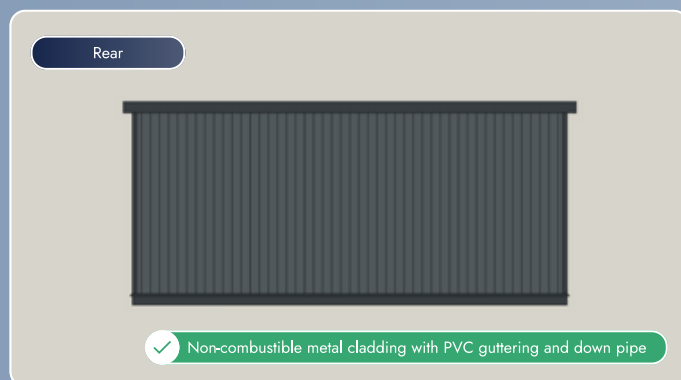
- ✓ Vertical composite cladding
- ✓ 50mm thermal insulation
- ✓ 100mm insulated roof panels
- ✓ Aluminium bi-folding door
- ✓ Aluminium opening windows



Manufacturing and installation of the highest-quality
GARDEN STUDIOS

S4+ | HERITAGE

Drawings show product as an example.



Dimensions

All units and sizes are nominal.

External Sizes

Width	4800mm / 4.80m / 15.74ft	Depth	3500mm / 3.50m / 11.48ft
Height (Front)	2410mm / 2.41m / 7.90ft	Height (Rear)	2310mm / 2.31m / 7.57ft

The external sizes do not account for the 500mm overhang at the front of the roof, or the 100mm overhang on the left, right, and rear of the roof.
As the height does not exceed 2500mm, installation 500mm away from a boundary (edge of land or property) typically does not require planning permission.

Internal Sizes

Width	4582mm / 4.58m / 15.03ft	Depth	3291mm / 3.29m / 10.79ft
Height (Front)	2122mm / 2.12m / 6.95ft	Height (Rear)	2022mm / 2.02m / 6.63ft
Area	15.06m ²		



Manufacturing and installation of the highest-quality
GARDEN STUDIOS

S4+ | HERITAGE

Specification

All units and sizes are nominal.

Base & Flooring

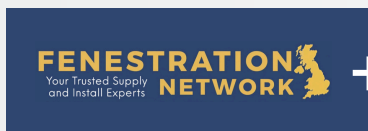
Thickness	143mm including setting cill	Setting Cill	150mm x 25mm PVC pressure-laminated
Insulation	25mm foil-wrapped thermal boards	Thermal Conductivity	As low as 0.022 W/mK
Frame & Bearers	4" x 2" C24 pressure-treated timber	Floorboards	18mm structurally engineered boards
Internal Finish	1.2mm waterproof PVC vinyl flooring		

Elevations & Walls

Thickness	109mm including timber cladding	Thickness (Rear)	100mm including metal cladding
Cladding	21mm log lapped redwood timber	Cladding (Rear)	1mm non-combustible metal
Insulation	25mm foil-wrapped thermal boards	Thermal Conductivity	As low as 0.022 W/mK
Frame	3" x 2" C24 pressure-treated timber	Boards	11mm OSB external skin on rear elevation
Membrane	Waterproof and breathable	External Corners	Timber counter battens
Internal Finish	11mm OSB internal finish		

Roof & Ceiling

System	Insulated roof panels	Thickness	145mm
Overhang (Front)	500mm on the front elevation	Overhang (Sides)	100mm on sides and rear elevations
Insulation	100mm thermal boards	Thermal Conductivity	As low as 0.18 W/mK
Soffit	9mm PVC hollow boards	Fascia	9mm PVC square boards
External Covering	Semi-gloss steel coated lining	Internal Finish	Steel coated lining
Guttering	PVC guttering and down pipe at the rear	Slope	Approximately 4 degrees



Manufacturing and installation of the highest-quality
GARDEN STUDIOS

S4+ | HERITAGE

Door

Style	Single entry door with side light	Lintel	4" x 4" C24 pressure-treated timber
Height	2015mm including addons	Width	1800mm including side light
Trickle Vents	2 x Anthracite Grey	Top Addons	42mm
Material / Profile	Reinforced PVC	Colour	Anthracite Grey inside and outside
Opening	Outwards	Glazing	28mm toughened double glazing
Lock	Multi point locking system		

Windows (x2)

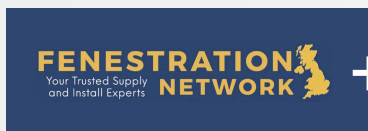
Style	Full height split into two sections	Height	2015mm including addons
Width	600mm	Trickle Vents	1 x Anthracite Grey
Top Addons	42mm	Material / Profile	Reinforced PVC
Colour	Anthracite Grey inside and outside	Opening	Top section opening outwards
Glazing	28mm toughened double glazing	Lock	Multi point locking system

Groundworks

Soft Surfaces	Steel ground piles	Hard Surfaces	Steel ground feet
---------------	--------------------	---------------	-------------------

No planning permission required

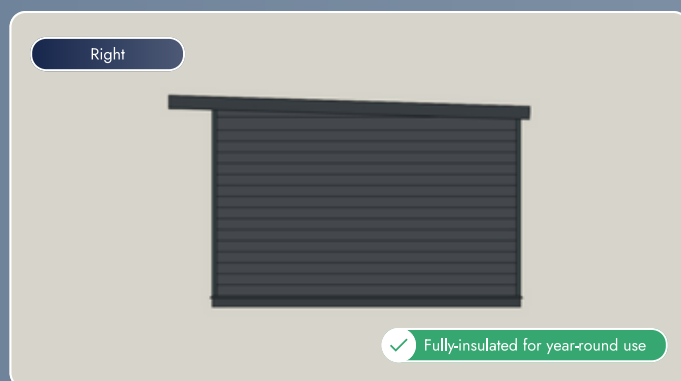
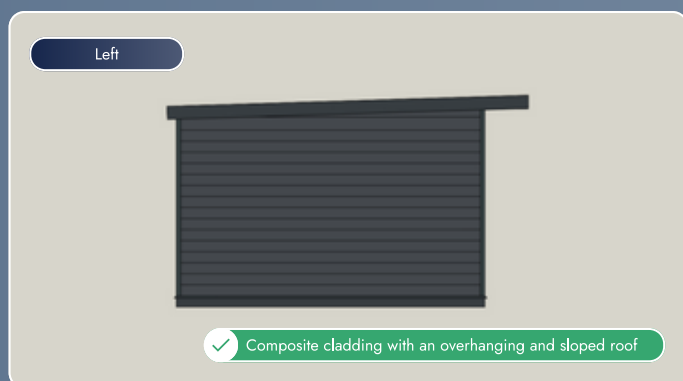
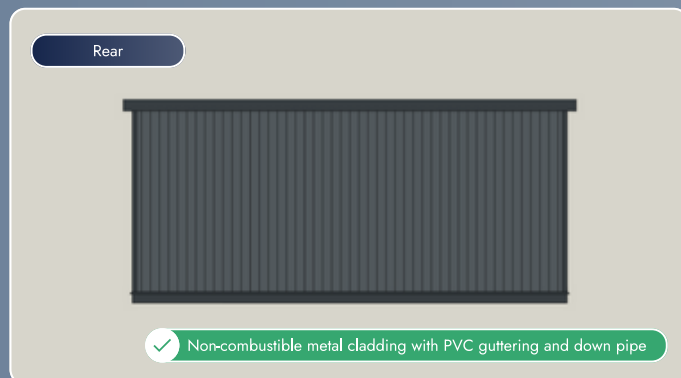
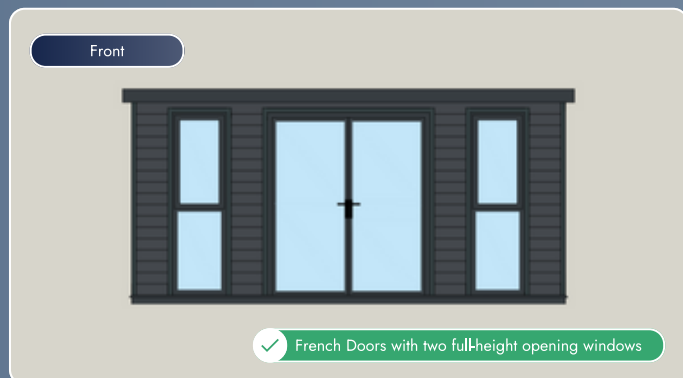
The garden studios can enhance the value and functionality of your outdoor spaces while adhering to the guidelines outlined in the permitted development scheme. By complying with the guidelines of this scheme, and when installed 500mm from a boundary (edge of land or property), in most cases it eliminates the need for planning permission.



Manufacturing and installation of the highest-quality
GARDEN STUDIOS

S4+ | SIGNATURE

Drawings show product as an example.



Dimensions

All units and sizes are nominal.

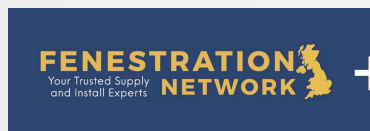
External Sizes

Width	4800mm / 4.80m / 15.74ft	Depth	3500mm / 3.50m / 11.48ft
Height (Front)	2410mm / 2.41m / 7.90ft	Height (Rear)	2310mm / 2.31m / 7.57ft

The external sizes do not account for the 500mm overhang at the front of the roof, or the 100mm overhang on the left, right, and rear of the roof.
As the height does not exceed 2500mm, installation 500mm away from a boundary (edge of land or property) typically does not require planning permission.

Internal Sizes

Width	4582mm / 4.58m / 15.03ft	Depth	3291mm / 3.29m / 10.79ft
Height (Front)	2122mm / 2.12m / 6.95ft	Height (Rear)	2022mm / 2.02m / 6.63ft
Area	15.06m ²		



Manufacturing and installation of the highest-quality
GARDEN STUDIOS

S4+ | SIGNATURE

Specification

All units and sizes are nominal.

Base & Flooring

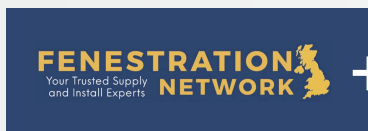
Thickness	143mm including setting cill	Setting Cill	150mm x 25mm PVC pressure-laminated
Insulation	25mm foil-wrapped thermal boards	Thermal Conductivity	As low as 0.022 W/mK
Frame & Bearers	4" x 2" C24 pressure-treated timber	Floorboards	18mm structurally engineered boards
Internal Finish	1.2mm waterproof PVC vinyl flooring		

Elevations & Walls

Thickness	109mm including composite cladding	Thickness (Rear)	100mm including metal cladding
Cladding	21mm embossed horizontal composite	Cladding (Rear)	1mm non-combustible metal
Insulation	25mm foil-wrapped thermal boards	Thermal Conductivity	As low as 0.022 W/mK
Frame	3" x 2" C24 pressure-treated timber	Boards	11mm OSB external skin on rear elevation
Membrane	Waterproof and breathable	External Corners	2mm PVC pressings
Internal Finish	11mm OSB internal finish		

Roof & Ceiling

System	Insulated roof panels	Thickness	145mm
Overhang (Front)	500mm on the front elevation	Overhang (Sides)	100mm on sides and rear elevations
Insulation	100mm thermal boards	Thermal Conductivity	As low as 0.18 W/mK
Soffit	9mm PVC hollow boards	Fascia	9mm PVC square boards
External Covering	Semi-gloss steel coated lining	Internal Finish	Steel coated lining
Guttering	PVC guttering and down pipe at the rear	Slope	Approximately 4 degrees



Manufacturing and installation of the highest-quality
GARDEN STUDIOS

S4+ | SIGNATURE

Door

Style	French doors	Lintel	4" x 4" C24 pressure-treated timber
Height	2015mm including addons	Width	1800mm
Trickle Vents	2 x Anthracite Grey	Top Addons	42mm
Material / Profile	Reinforced PVC	Colour	Anthracite Grey inside and outside
Opening	Outwards	Glazing	28mm toughened double glazing
Lock	Multi point locking system		

Windows (x2)

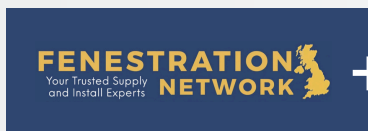
Style	Full height split into two sections	Height	2015mm including addons
Width	600mm	Trickle Vents	1 x Anthracite Grey
Top Addons	42mm	Material / Profile	Reinforced PVC
Colour	Anthracite Grey inside and outside	Opening	Top section opening outwards
Glazing	28mm toughened double glazing	Lock	Multi point locking system

Groundworks

Soft Surfaces	Steel ground piles	Hard Surfaces	Steel ground feet
---------------	--------------------	---------------	-------------------

No planning permission required

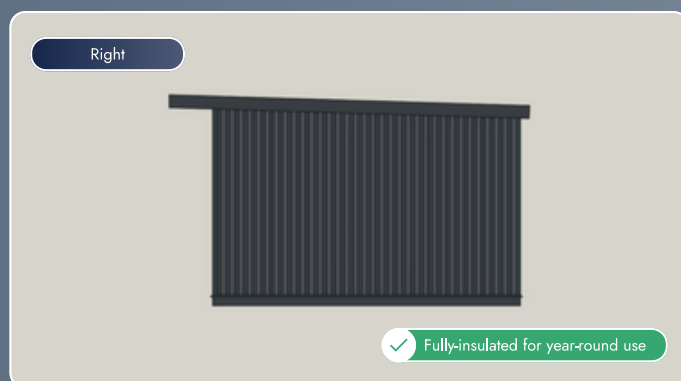
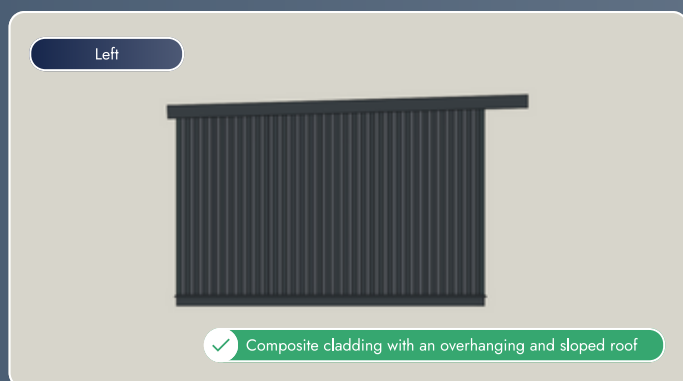
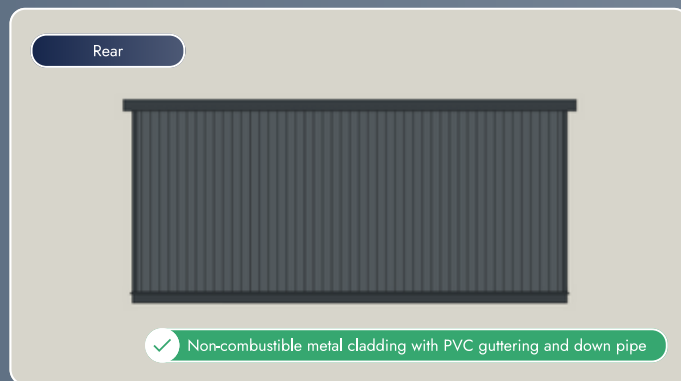
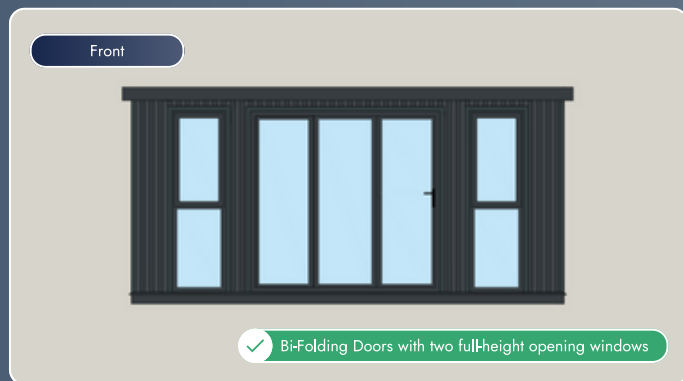
The garden studios can enhance the value and functionality of your outdoor spaces while adhering to the guidelines outlined in the permitted development scheme. By complying with the guidelines of this scheme, and when installed 500mm from a boundary (edge of land or property), in most cases it eliminates the need for planning permission.



Manufacturing and installation of the highest-quality
GARDEN STUDIOS

S4+ | PREMIUM

Drawings show product as an example.



Dimensions

All units and sizes are nominal.

External Sizes

Width	4800mm / 4.80m / 15.74ft	Depth	3500mm / 3.50m / 11.48ft
Height (Front)	2410mm / 2.41m / 7.90ft	Height (Rear)	2310mm / 2.31m / 7.57ft

The external sizes do not account for the 500mm overhang at the front of the roof, or the 100mm overhang on the left, right, and rear of the roof.
As the height does not exceed 2500mm, installation 500mm away from a boundary (edge of land or property) typically does not require planning permission.

Internal Sizes

Width	4500mm / 4.50m / 14.76ft	Depth	3250mm / 3.25m / 10.66ft
Height (Front)	2122mm / 2.12m / 6.95ft	Height (Rear)	2022mm / 2.02m / 6.63ft
Area	14.62m ²		



Manufacturing and installation of the highest-quality
GARDEN STUDIOS

S4+ | PREMIUM

Specification

All units and sizes are nominal.

Base & Flooring

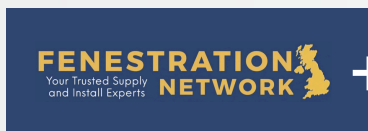
Thickness	143mm including setting cill	Setting Cill	180mm x 25mm aluminium powder-coated
Insulation	50mm foil-wrapped thermal boards	Thermal Conductivity	As low as 0.022 W/mK
Frame & Bearers	4" x 2" C24 pressure-treated timber	Floorboards	18mm structurally engineered boards
Internal Finish	1.2mm waterproof PVC vinyl flooring		

Elevations & Walls

Thickness	150mm including composite cladding	Thickness (Rear)	100mm including metal cladding
Cladding	26mm slatted vertical composite	Cladding (Rear)	1mm non-combustible metal
Insulation	50mm foil-wrapped thermal boards	Thermal Conductivity	As low as 0.022 W/mK
Frame	3" x 2" C24 pressure-treated timber	Boards	11mm OSB external skin on all elevations
Membrane	Waterproof and breathable	External Corners	2mm aluminium pressings
Internal Finish	11mm OSB internal finish		

Roof & Ceiling

System	Insulated roof panels	Thickness	145mm
Overhang (Front)	500mm on the front elevation	Overhang (Sides)	100mm on sides and rear elevations
Insulation	100mm thermal boards	Thermal Conductivity	As low as 0.18 W/mK
Soffit	9mm PVC hollow boards	Fascia	9mm PVC square boards
External Covering	Semi-gloss steel coated lining	Internal Finish	Steel coated lining
Guttering	PVC guttering and down pipe at the rear	Slope	Approximately 4 degrees



Manufacturing and installation of the highest-quality
GARDEN STUDIOS

S4+ | PREMIUM

Door

Style	Bi-folding doors	Lintel	Steel flitch beam
Height	2015mm including addons	Width	2390mm
Trickle Vents	3 x Anthracite Grey	Top Addons	42mm
Material / Profile	Aluminium polyamide	Colour	Anthracite Grey inside and outside
Opening	Outwards	Glazing	28mm toughened double glazing
Lock	Multi point locking system		

Windows (x2)

Style	Full height split into two sections	Height	2015mm including addons
Width	600mm	Trickle Vents	1 x Anthracite Grey
Top Addons	42mm	Material / Profile	Aluminium polyamide
Colour	Anthracite Grey inside and outside	Opening	Top section opening outwards
Glazing	28mm toughened double glazing	Lock	Multi point locking system

Groundworks

Soft Surfaces	Steel ground piles	Hard Surfaces	Steel ground feet
---------------	--------------------	---------------	-------------------

No planning permission required

The garden studios can enhance the value and functionality of your outdoor spaces while adhering to the guidelines outlined in the permitted development scheme. By complying with the guidelines of this scheme, and when installed 500mm from a boundary (edge of land or property), in most cases it eliminates the need for planning permission.