

**KEY PLAN**

**UNIT PLAN - 1 BHK**

PARTICULARS(AS PER RERA)	SQ. MT	SQ. FT
CARPET AREA	<b>33.90</b>	<b>365</b>

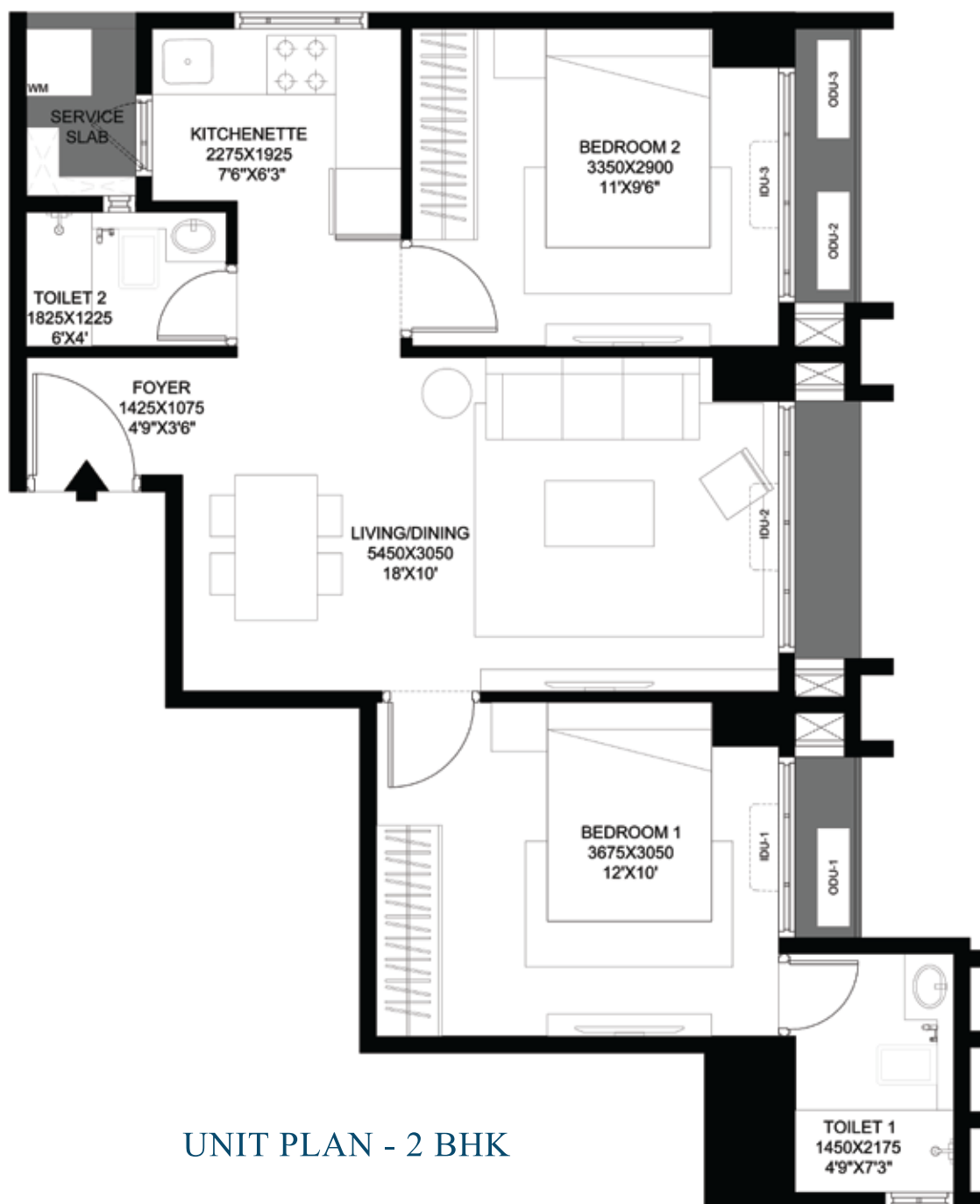


PASSCODE  
**MIRACLE  
BAY**



Artist's Impression





UNIT PLAN - 2 BHK

PARTICULARS(AS PER RERA)	SQ. MT	SQ. FT
CARPET AREA	52.00	560



KEY PLAN



PASSCODE  
**MIRACLE  
BAY**



UNIT PLAN - 2 BHK

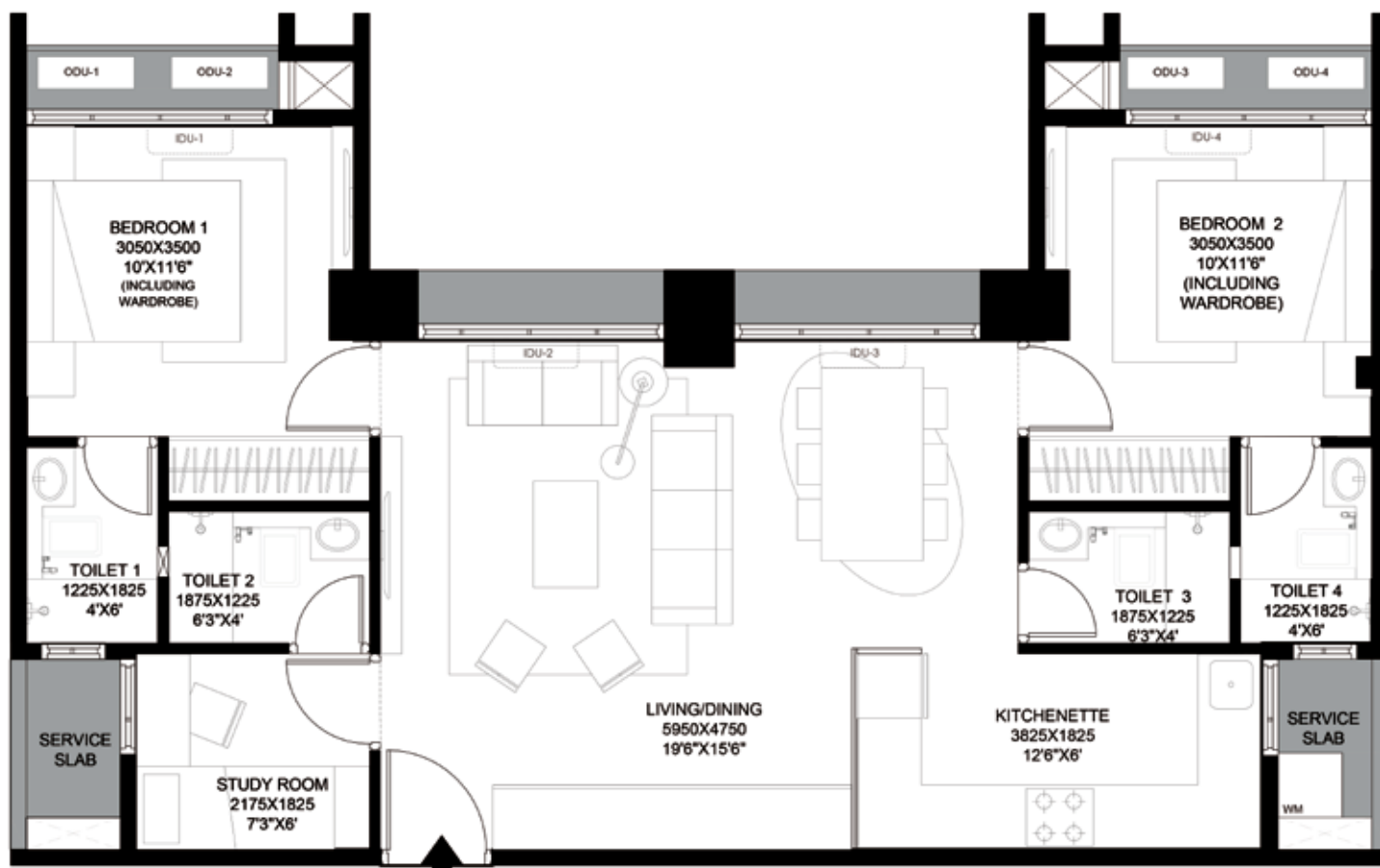


KEY PLAN

PARTICULARS(AS PER RERA)	SQ. MT	SQ. FT
CARPET AREA	53.90	580



PASSCODE  
**MIRACLE  
BAY**



## JODI FLAT (1+1 BHK) OPTION 1

### 2.5BHK UNIT PLAN

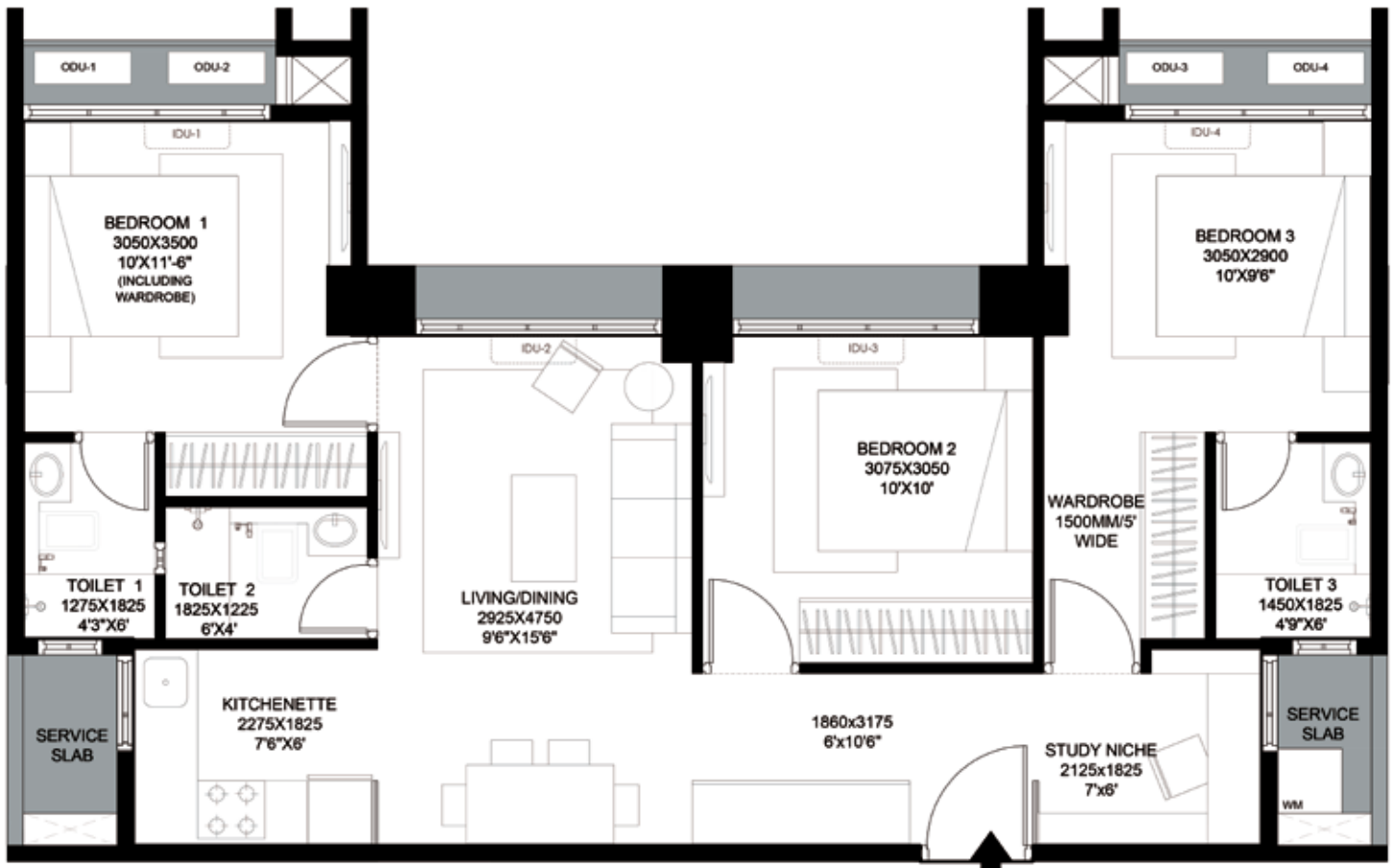
PARTICULARS(AS PER RERA)	SQ. MT	SQ. FT
CARPET AREA	68	730



KEY PLAN



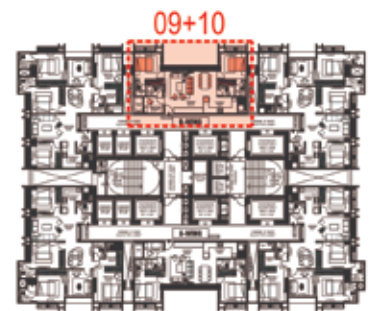
PASSCODE  
**MIRACLE  
BAY**



## JODI FLAT (1+1 BHK) OPTION 2

### 3BHK UNIT PLAN

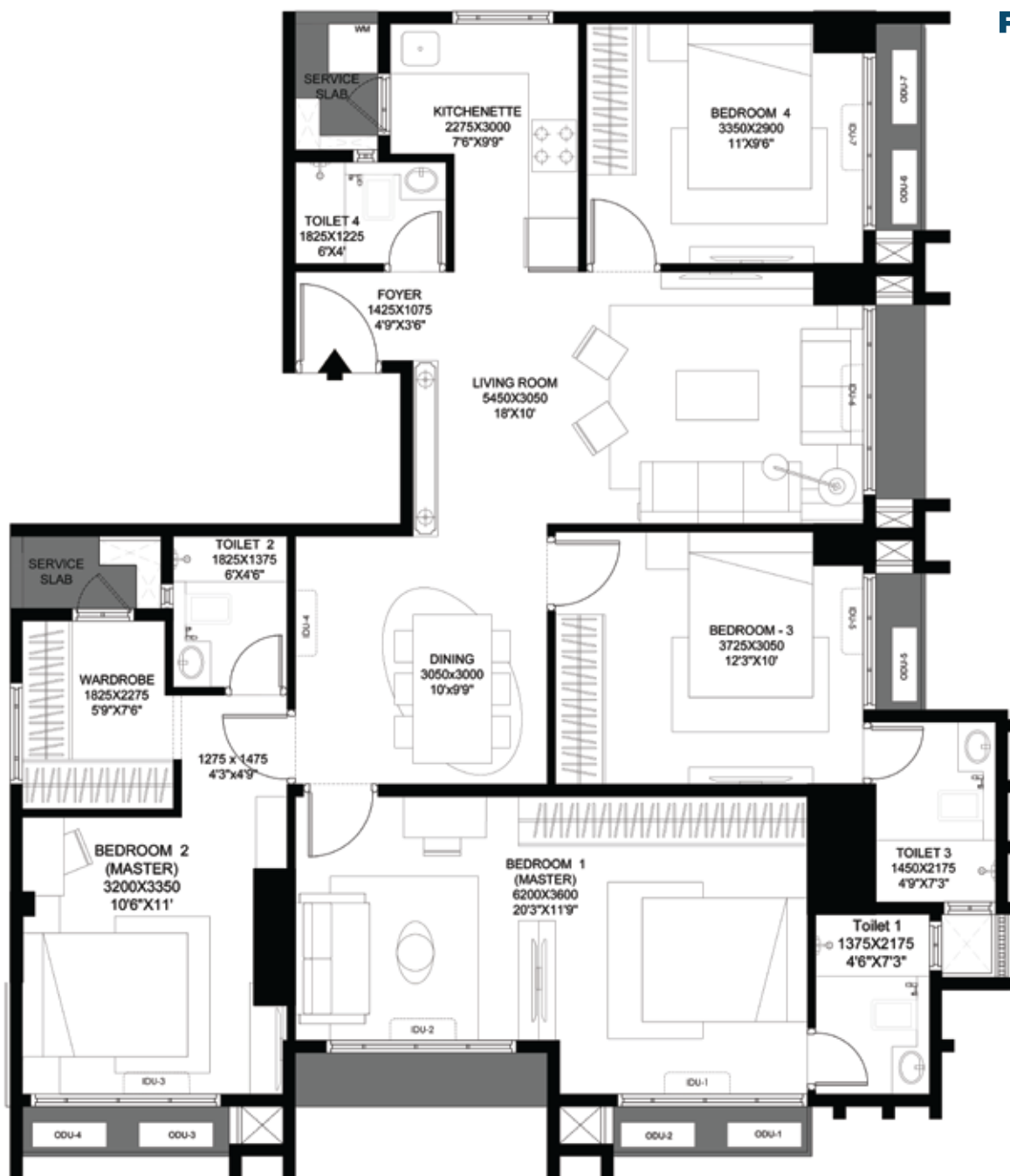
PARTICULARS(AS PER RERA)	SQ. MT	SQ. FT
CARPET AREA	68	730



KEY PLAN



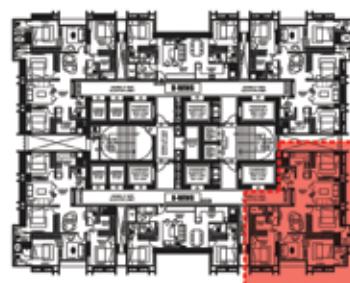
PASSCODE  
**MIRACLE  
BAY**



## JODI FLAT (2+2 BHK) OPTION 1

### 4BHK UNIT PLAN

PARTICULARS(AS PER RERA)	SQ. MT	SQ. FT
CARPET AREA	106	1140

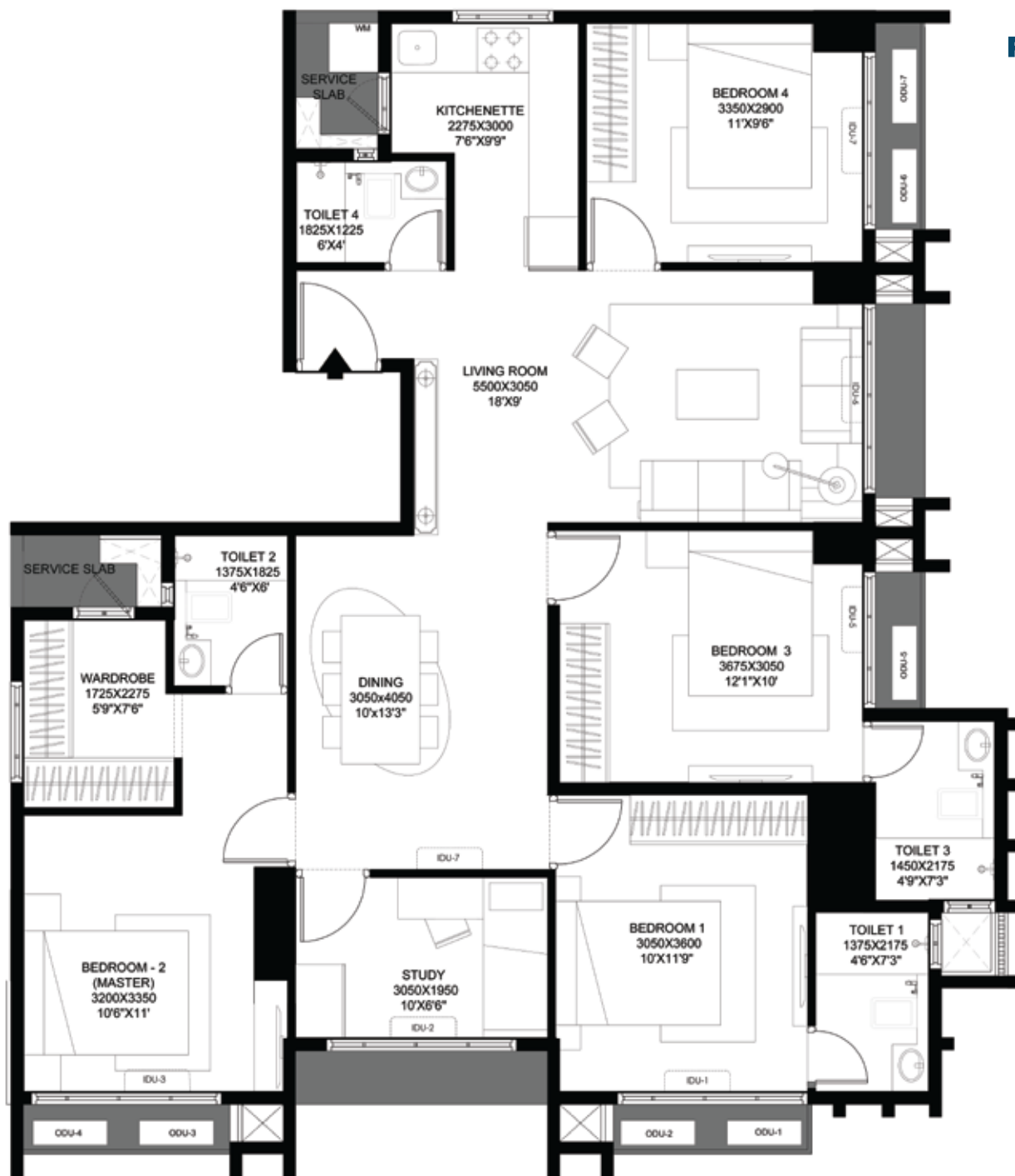


01+02

KEY PLAN



PASSCODE  
**MIRACLE  
BAY**



## JODI FLAT (2+2 BHK) OPTION 2

### 4.5 BHK UNIT PLAN

PARTICULARS(AS PER RERA)	SQ. MT	SQ. FT
CARPET AREA	106	1140



01+02

KEY PLAN

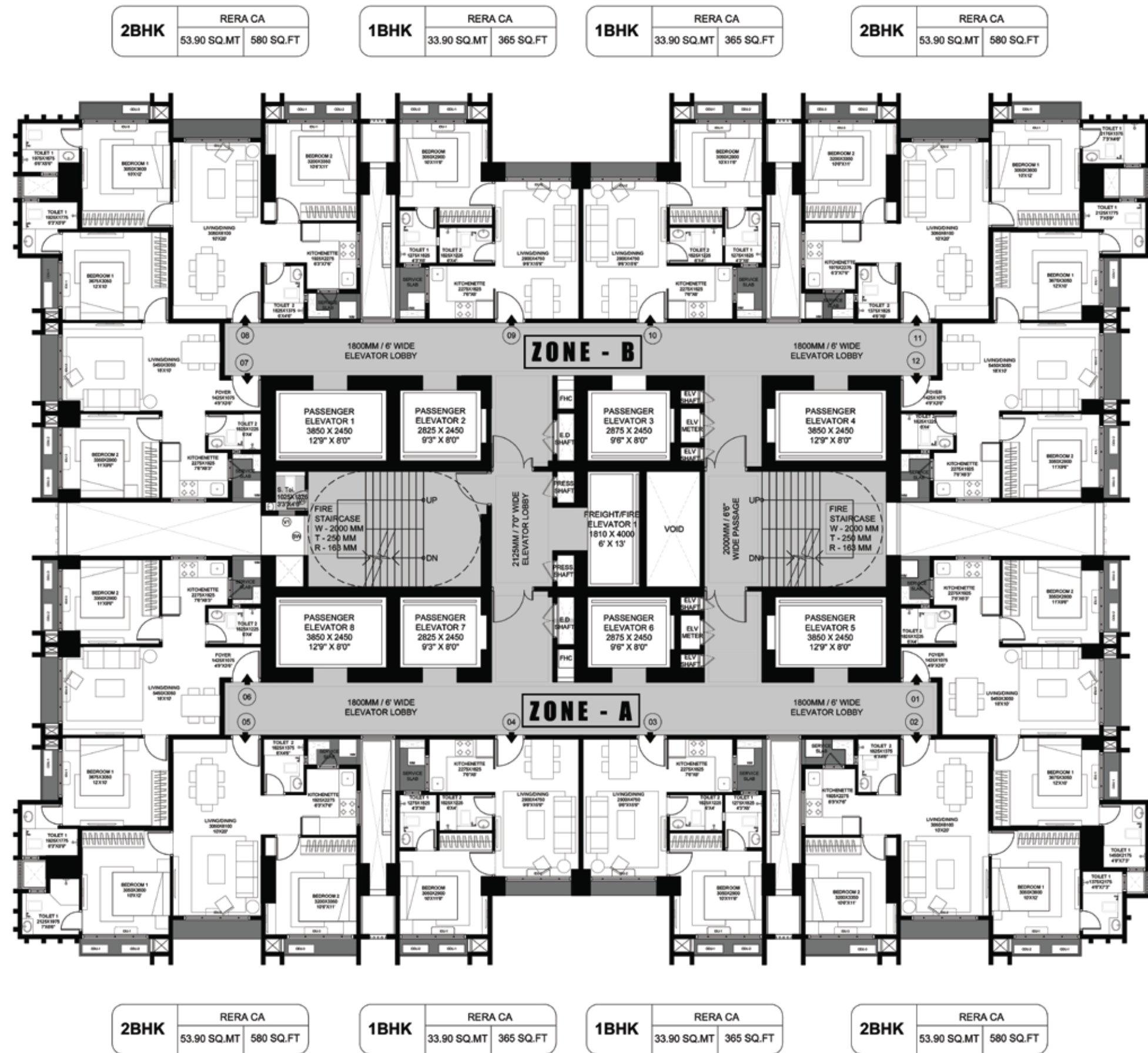


PASSCODE  
**MIRACLE  
BAY**

The project has been registered via MahaRERA Registration No. P51900030390 is available on the website <https://maharera.mahaonline.gov.in> under registered projects.

Disclaimer: The plans, specification, elevation, conceptual designs, visuals, images, computer generated images, dimensions, photograph, furniture, fixtures, amenities, facilities, etc., are strictly provided for representation purpose only and are subject to requisite approvals from the competent authorities unless otherwise stated herein. This does not constitute an offer and/or contract of any nature between the company and the prospective purchaser/ customer has independently satisfied himself before any conclusive decision. All brand names and trademarks stands reserved. Passcode Miracle Bay is used for marketing purpose only. The project is financed by TATA Capital Housing Finance Limited. \*T&C Apply. Sept 2021.






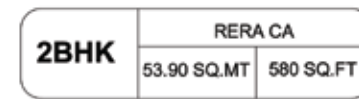
TYPICAL FLOOR  
(2<sup>nd</sup> to 7<sup>th</sup>, 9<sup>th</sup> to 14<sup>th</sup>,  
16<sup>th</sup> to 21<sup>st</sup>, 23<sup>rd</sup> to 27<sup>th</sup>)

# PASSCODE MIRACLE BAY



The project has been registered via  MahaRERA Registration No. P51900030390 is available on the website <https://maharera.mahaonline.gov.in> under registered projects.

Disclaimer: The plans, specification, elevation, conceptual designs, visuals, images, computer generated images, dimensions, photograph, furniture, fixtures, amenities, facilities, etc., are strictly provided for representation purpose only and are subject to requisite approvals from the competent authorities unless otherwise stated herein. This does not constitute an offer and/or contract of any nature between the company and the prospective purchaser/ customer has independently satisfied himself before any conclusive decision. All brand names and trademarks stands reserved. Passcode Miracle Bay is used for marketing purpose only. The project is financed by TATA Capital Housing Finance Limited. \*T&C Apply. Sept 2021.



PASSCODE  
**MIRACLE  
BAY**

Disclaimer: The plans, specification, elevation, conceptual designs, visuals, images, computer generated images, dimensions, photograph, furniture, fixtures, amenities, facilities, etc., are strictly provided for representation purpose only and are subject to requisite approvals from the competent authorities unless otherwise stated herein. This does not constitute an offer and/or contract of any nature between the company and the prospective purchaser/ customer has independently satisfied himself before any conclusive decision. All brand names and trademarks stands reserved. Passcode Miracle Bay is used for marketing purpose only. The project is financed by TATA Capital Housing Finance Limited. \*T&C Apply. Sept 2021.