

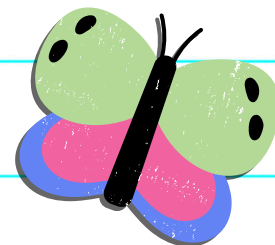
The graphic features a central white rounded rectangle with a black border, set against a black background with white confetti. The text 'CDYC 2024' is in large, bold, black sans-serif font. Below it, 'Yearly Training' is in a smaller, black, handwritten-style font, flanked by two horizontal lines. At the bottom, a black rectangle contains the text 'Competitive Dreams of Youth in the Carolinas' in white sans-serif font. Decorative elements include a blue four-pointed star in the top left, two pink cherries with green stems on the left, a yellow smiley face in the bottom left, a rainbow star with a face on the right, and a green starburst in the bottom right. The word 'COOL' is spelled out in colorful circles along the top right edge of the white rectangle.

# CDYC 2024

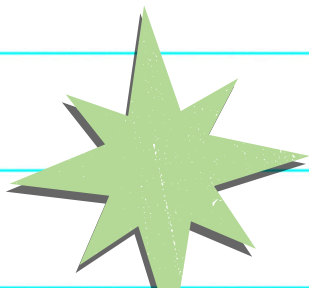
## Yearly Training

Competitive Dreams of Youth in  
the Carolinas

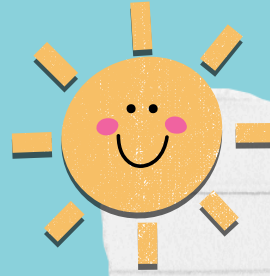
*Dream*



**Hello and welcome  
to the 2024  
Fundraising Season!**



# CDYC Policies

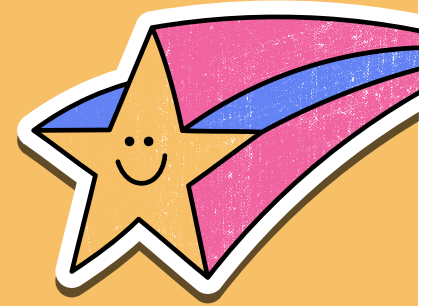


**SUPER**

The next few slides will cover  
information that pertains  
specifically to CDYC



# Items to be Covered




**Attendance**



**Uniforms**

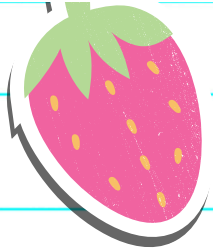


**Codes of Conduct**

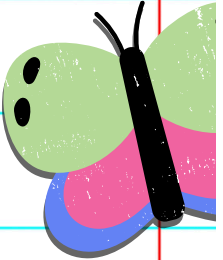


**Venue Rules and  
Training**

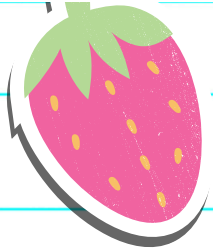




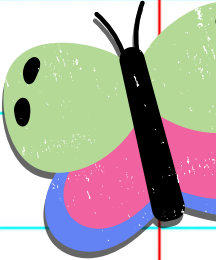
# Attendance



- 1** All sign ups must be done via the portal.  
There will be no exceptions to this.
- 2** Once registered, you are on the list. To avoid any violations you must unregister **NO LESS** than 14 days prior to an event. After that point you will be in violation of our attendance policy.

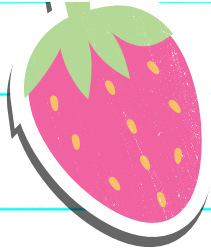


# Attendance Continued

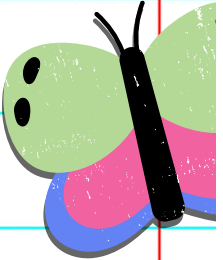


**3** Emergencies will be addressed on a case by case basis, otherwise the below applies.

**4** If you unregister or call out or are considered a no show after the 14 day window you will be required to forfeit, at minimum, the next event you would have been assigned to volunteer.

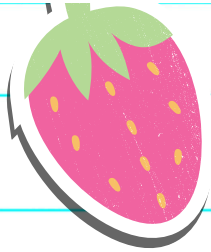


# **Attendance Continued**

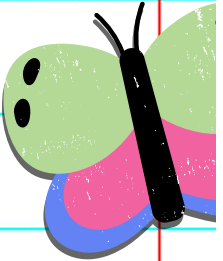


**5** Repeat violations will result in additional penalties as decided on by the CDYC Board.

**6** If it is necessary to cancel your registration for any reason, you must; **UNREGISTER** on the portal **AND** send an email to **[cdyc.rsvp@gmail.com](mailto:cdyc.rsvp@gmail.com)**



# Attendance Continued



**7 CDYC will publish expected arrival times on all events. It is expected that you arrive on time, the time posted on the event. If you can not arrive and be in the location you are assigned to at the published time, you should not remain registered for that event. All volunteers should be on site for the entire event to assist each other.**

**Failure to arrive at the designated time puts CDYC in jeopardy of losing monetary incentives and causes others to be responsible for your assignment, thus resulting in a \$50 fine being assessed for your tardiness.**

## **New Email Addresses to Know**

**President@cdycfundraising.org**

**VicePresident@cdycfundraising.org**

**CFO@cdycfundraising.org**

**Treasurer@cdycfundraising.org**

**DirectorofOperations@cdycfundraising.org**

**DirectorofVolunteers@cdycfundraising.org**

**Secretary@cdycfundraising.org**



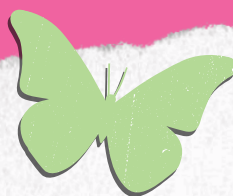
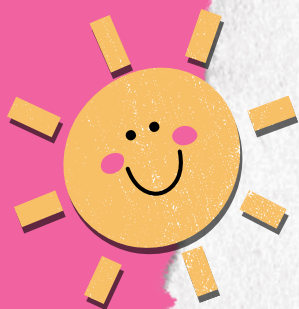
# UNIFORMS

## Bank of America Stadium

Blue CDYC Polo with CDYC logo

## PNC Music Pavillion

Red CDYC Polo with CDYC logo

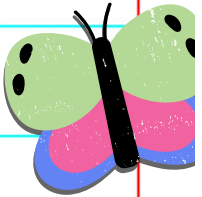
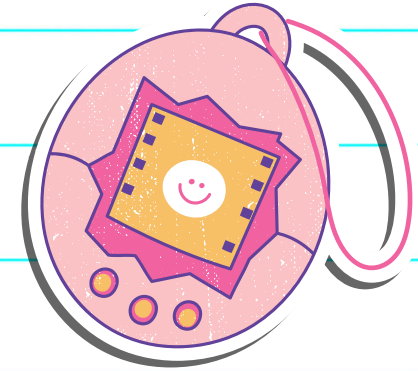
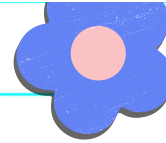


## OVERALL

- All Locations Require the Following
- 1) SLIP RESISTANT shoes - MUST say slip resistant on the shoe or you can NOT wear them
  - 2) Black Pants or Shorts (must follow the fingertip length test)
  - 3) Hat or Visor must be worn and hair pulled back into a pony tail if longer than tapered to the back of your neck.



# Codes of Conduct



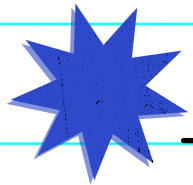
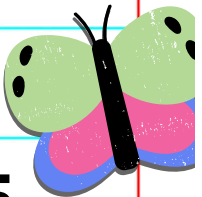
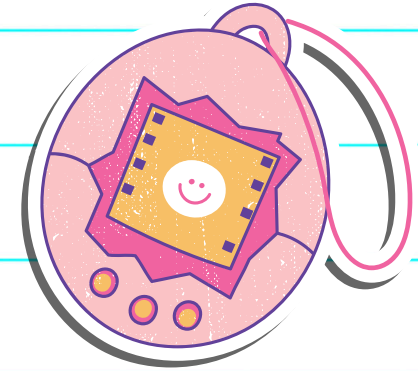
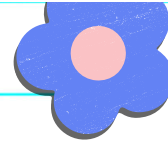
**1** **Respect EVERYONE!**

**2** **Be on Time!**

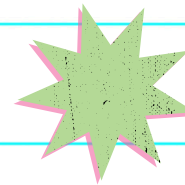
**3** **Work Together**

**4** **Have Fun**

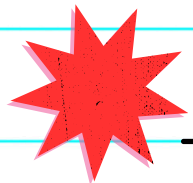
# Venue Minimum Donation Per Person



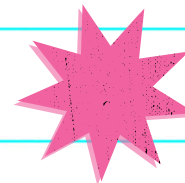
**BOA - \$75**



**Spectrum - \$75**



**PNC - \$50**



**Ren Fest - \$15 / hr**  
**The more ppl, the**  
**higher this can be!**



# Required Trainings

Things our partners require



BOA Stadium / LEVY	PNC Music Pavillion
Complete this BOA training: <a href="https://www.brainshark.com/1/player/levy?fb=0&amp;r3f1=&amp;custom=nonlevyteammembertraining">https://www.brainshark.com/1/player/levy?fb=0&amp;r3f1=&amp;custom=nonlevyteammembertraining</a>	<a href="#">PNC ALCOHOL TRAINING - CLICK HERE</a>
Pre-Req for Signed Documents on Portal	Alcohol Training to Come - will be sent out at a later time
ServSafe Alcohol - you will have completed this as part of your New Registration	<a href="#">PNC "IN PERSON" ALCOHOL TRAINING - COMPLETE THIS TOO!</a>
The document to the left must be completed as well and emailed to <a href="mailto:directorofvolunteers@cdycfundraising.org">directorofvolunteers@cdycfundraising.org</a>	
ServSafe Alcohol was emailed to you via ServSafe with the email you signed up with.	

Canva

Forbidden (403)

Sorry, you cannot access this page

Please visit our [Help Center](#) for more information. Error code: [878dabf739dc8791]

[Go back to the Canva homepage](#)



# Venue Rules



## BOA

Credentials must be worn at all times, there is no exception, you will be escorted out of the building if you are found to not have your credentials. If you are a cook, tie it to your belt loop, otherwise please wear around your neck.

## PNC

All volunteers must sign in at the sign in tent, please have a valid ID to check in.





# Alcohol Policies

Both VENUES follow very similar Alcohol Policies

- 1) Each fan/guest is only allowed a maximum of TWO alcoholic beverages at any time.
- 2) One double mix drink is considered TWO alcoholic beverages and therefor the fan/guest can NOT have a beer or second mixed drink.
- 3) All beer and wine must be cracked open and or poured into a designated cup
- 4) Alcohol incidents must be reported to stand/bar leads
- 5) We must ask for ID for ALL fans/guests. Once you ask for ID, you must see one, there will not be an option to allow someone to have a beverage once we have asked for ID

# **NEW PENALTIES**

## **ATTENDANCE**

This year both venues will charge us a fine PER VOLUNTEER that we are missing in any location.

For any person that was scheduled to be at a venue who calls out or does not show up we will be charged \$75 EACH!!

This will be taken off of the total amount sent to your organization, meaning that your entire organization is penalized for your missing an event where we can not replace you in time.

THIS IS NEW AND WE CAN NOT GET OUT OF THIS! PLEASE PLAN TO ATTEND ALL EVENTS YOU REGISTER FOR!

# ASSIGNMENTS

## Random and Will Change!

In most cases in previous years, organizations would be paired up with other volunteers from their organization in locations.

This year, there will be even more of a chance that you are assigned to work a location that may not have your entire organization.

We are working on how much we have grown over the last two years and working towards offering more venues, which means, we have to have more of your trained in positions to do so.

With that said, please do not ask to have your position changed. We will do all we can to support you and your dedicated organization!

**THANK**  
**you!**