

W E L C O M E



WELCOME TO YOUR MOUNTAIN GETAWAY



ABOUT US

OUR FAMILY ON OUR FIRST VISIT TO THE HIGH COUNTRY IN 2015, WHERE WE FELL IN LOVE WITH THE AREA AND THE IDEA FOR "HONEY BEAR CABIN" WAS BORN

For 20 years, our family lived a life of constant movement. As a military family—with my husband serving in the Marine Corps and myself in the Air Force—we relocated frequently, never staying in one place long enough for our children to have that one special place to truly call home.

That all changed after being stationed in North Carolina. We fell in love with the region's rich, diverse landscapes and knew it was time to create a permanent haven for our family. And so, Honey Bear Cabin was born.

The name "Honey Bear" is especially meaningful to me—it was a childhood nickname given by my father and is forever tied to feelings of warmth, love, and family. These are the very sentiments we wanted to pass on to our children. Honey Bear Cabin was created as a place to celebrate holidays, find peace amidst the busyness of life, and serve as a touchstone no matter where in the world our journey takes us.

It's now our sincere hope that you'll find that same sense of comfort, connection, and joy during your stay. Whether you're gathering with loved ones, celebrating a milestone, or simply seeking a quiet escape, we warmly invite you to make yourself at home and create cherished memories of your own at Honey Bear Cabin.

Welcome



Thank you for choosing to stay with us! We are excited to welcome you to Honey Bear Cabin.

We invite you to browse through our welcome book, where you can find all the information about the house and about our favorite local places to visit!

If you have any questions or need anything at all during your stay please don't hesitate to message me.

Enjoy your stay!

Hope

Hello

I AM HOPE

Hello and welcome! I'm so glad you're here. Traveling has always been a source of joy for me—it's a way to discover new places, meet wonderful people, and create unforgettable memories. But above all, the time I spend with family is what I treasure most. That love for connection, comfort, and shared experiences is exactly what I hope to bring to your stay.

As a host, I'm committed to making your visit as smooth, relaxing, and enjoyable as possible. I've put great care into creating a space that feels like a true home away from home—whether you're here for a family vacation, a romantic getaway, or just a peaceful retreat. Your comfort and happiness are my top priorities, and I'm always happy to offer local tips, answer questions, or provide anything that might make your stay more memorable.

Thank you for considering my space for your travels. I look forward to hosting you and helping you create lasting memories of your own!



FUN FACT: We have items in the cabin from Canada, Finland, Norway, Kenya, Tanzania, Bosnia, Colombia, Belize, Taiwan, Costa Rica, Scotland, Ghana, Indonesia, Thailand and Austria.

CONTENTS

- 01 WIFI INFORMATION
- 02 CHECKING IN
- 03 MAINTENANCE AND CLEANING
- 04 HOUSE RULES
- 05 CHECKING OUT
- 06 SUPPLIES AND APPLIANCES
- 07 FIREPIT, FIREPLACE, NEST
- 08 SOFA BED, HOT TUB
- 09 TV INSTRUCTIONS
- 10 HOME GUIDE
- 11 HOME GUIDE CONTINUED
- 12 RESTAURANT RECOMMENDATIONS
- 13 NEARBY ACTIVITIES
- 14 THINGS TO DO
- 15 DRIVING DISTANCES
- 16 REVIEWS



CONNECT TO WIFI



WIFI NAME

*Honey Bear
Cabin*

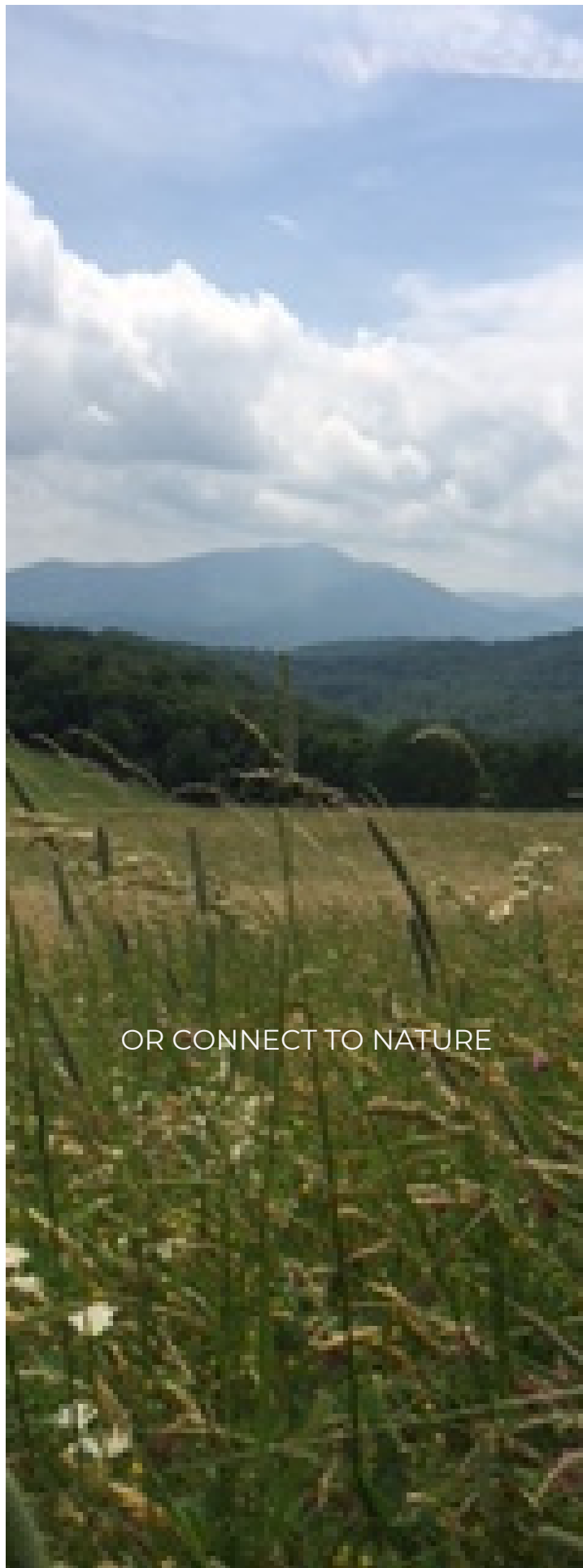


PASSWORD

cabin123



OR CONNECT TO NATURE



CHECK-IN & DIRECTIONS

Check-in is from 4pm | Check-out is at 11am

DIRECTIONS & PARKING

You will get the code to the front door a few days prior to your check-in.

Your GPS should guide you here without any issues, but if you would like alternate routes in case someone in your group prefers fewer curves and hills, please let me know.

Please note: the last 2 miles of the road are currently being repaired, so expect some uneven gravel sections and a wait.

We have parking to accommodate 6 vehicles.

Additional notes: Check-in time is any time after 4:00pm. Please message me if you are going to arrive earlier and we may be able to accommodate you. Your door code will not activate until check-in time. Late check-out may not be possible due to our cleaners schedule and getting the place ready for the next guest.



MAINTENANCE AND CLEANING

We conduct a thorough cleaning and maintenance inspection of the home before each check-in to ensure everything is in good working order. That said, just like any home, unexpected issues can occasionally arise—and often, it's our guests who are the first to notice them. If you find anything that's not working properly or seems to be missing, please don't hesitate to reach out. We're here to help and will do our best to address any concerns promptly to ensure your stay remains comfortable and enjoyable.



HOUSE RULES



To keep the cabin comfortable and safe for everyone please:

- No smoking inside. This includes the use of tobacco, cannabis, e-cigarettes, vaping, etc.
- Do not tamper with or remove security cameras.
- If guests move logs, push buttons or burn anything in the indoor fireplace including marshmallows, wood, paper and a service call is required to turn on the fireplace, guests will be responsible for service call and repair cost. Starting at \$250.
- Unplug space heaters when not in use.
- Turn off gas lines when done with grill and outdoor fire pit.
- If you move it, please return furniture to it's original place.
- If the hot tub requires extra cleaning after your stay because of vomit, food, liquids, bubbles or other items that should not be in the hot tub, there will be a \$85 cleaning fee.
- No parties

CHECKING OUT (11 am)

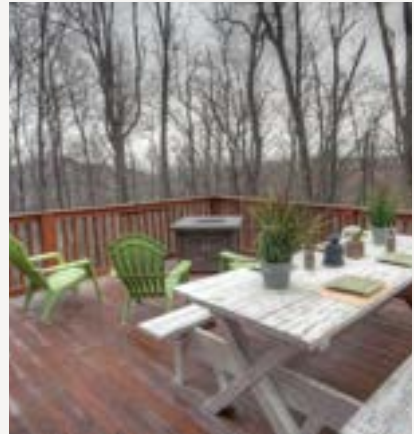
1. Load and turn on dishwasher if you have dirty dishes.
2. Take out trash.
3. Turn off lights.
4. Have a safe drive home.

*Any food left behind will be thrown away for sanitary reasons.

Please shoot me a message if anything is missing, broken or not functioning so that I can get it fixed prior to the next guest.

Thank you for keeping the place in great shape during your visit.

Visit us again!



KITCHEN APPLIANCES & SUPPLIES

SUPPLIES

We provide a starter kit of essential supplies to help you settle in comfortably. This includes items like spices, trash bags, coffee, tea, toilet paper, soap, shampoo, dish detergent, and dishwasher pods. For longer stays (beyond a few days), we recommend bringing additional supplies, as the starter kit is designed to cover just the first couple of days of your visit.

We also have a washer and dryer with starter detergent.

APPLIANCES

- Rice Cooker
- Crockpot
- Blender
- Mixer
- Keurig
- Regular drip coffee maker
- Waffle maker
- Griddle
- Chopper
- Toaster
- Microwave
- Kettle



INSTRUCTIONS FOR USE

INDOOR FIREPLACE

-The remote is all that you need to operate the fireplace. It is located on the wall near the brown leather chair.

- To turn on, select how long you want the fireplace to run (30, 90 or 120 min) and push the button. Wait 1 min and if it doesn't come on push the off button. Wait about a min before pushing on again. If you push it too many times it will go into safety mode and will not turn back on for several hours.

Please do not touch any of the buttons or gadgets near the fireplace and please do not throw anything in the fireplace. Do not move the logs as it will cut off propane supply. If a service call is required for marshmallows etc in the fireplace, guest will be held responsible for costs.

.
..

OUTDOOR GAS FIREPIT

-Turn the control knob to the "OFF" position.

- Fully open gas line valve located on the patio floor.

- Push in gas control knob and turn counterclockwise to "IGNITER".

-After fire pit lights, release control knob. Push in and turn the control knob to "HIGH", then release control knob. If you want a lower temperature, push in the control knob and turn counterclockwise to "LOW".

-To extinguish burner, depress control knob and continue to turn it clockwise to "OFF".

-Turn gas line valve clockwise to "OFF" .

NEST(HEAT & A/C) - LOCATED BY STAIRS GOING UP TO LOFT

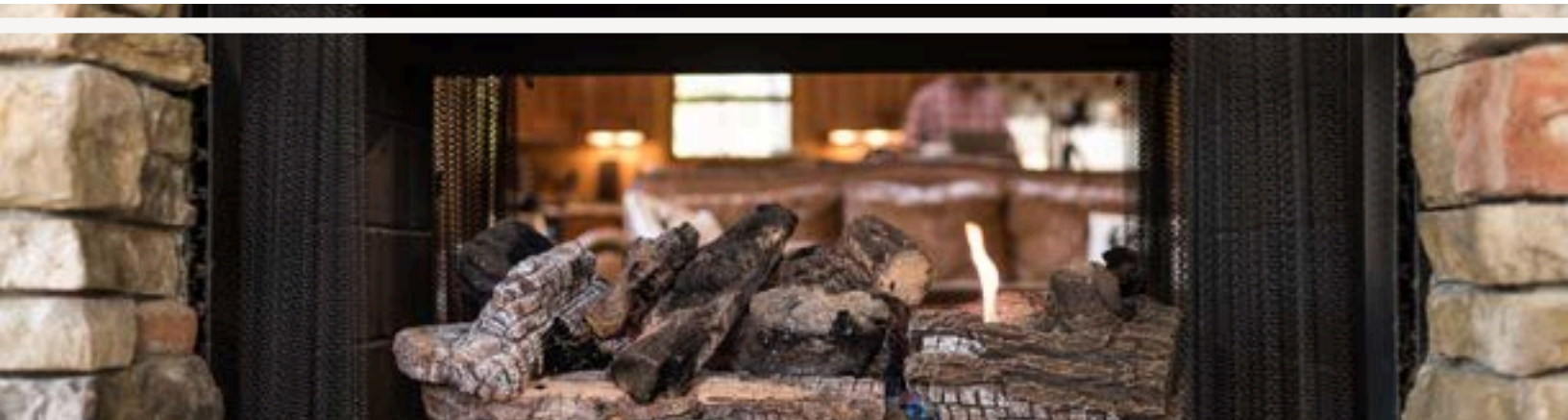
-Tap the screen so that it lights up.

-To select heat or cool mode turn the dial to which mode you want (heat or cool).

-Once you choose heat or cool push the dial in.

-Then turn the dial to select the temp you want.

-Push the dial in to set the temp.



INSTRUCTIONS FOR USE

DOWNSTAIRS HEAT/AC (*AC IS NORMALLY NOT NEEDED)

- The thermostat is located at the bottom of the stairs on the right hand side
- To use, just tap it to wake it up
- Mode should be on heat
- Use +/- button to adjust heat
- If you are sleeping on sofa bed and the air is hitting you just adjust the air direction by clicking on vane

SOFA BED

-The sofa in the game room is a pull-out bed. (queen). To open the bed, grab bottom front rail & lift up, then pull front rail forward (towards you).

To close: Pull top rail toward you & up until bottom rail clicks into place. The towels and linens for the pull-out bed are located behind the couch.

HOT TUB

To open cover:

- Unlatch 2 front latches.
- Fold back the top cover.

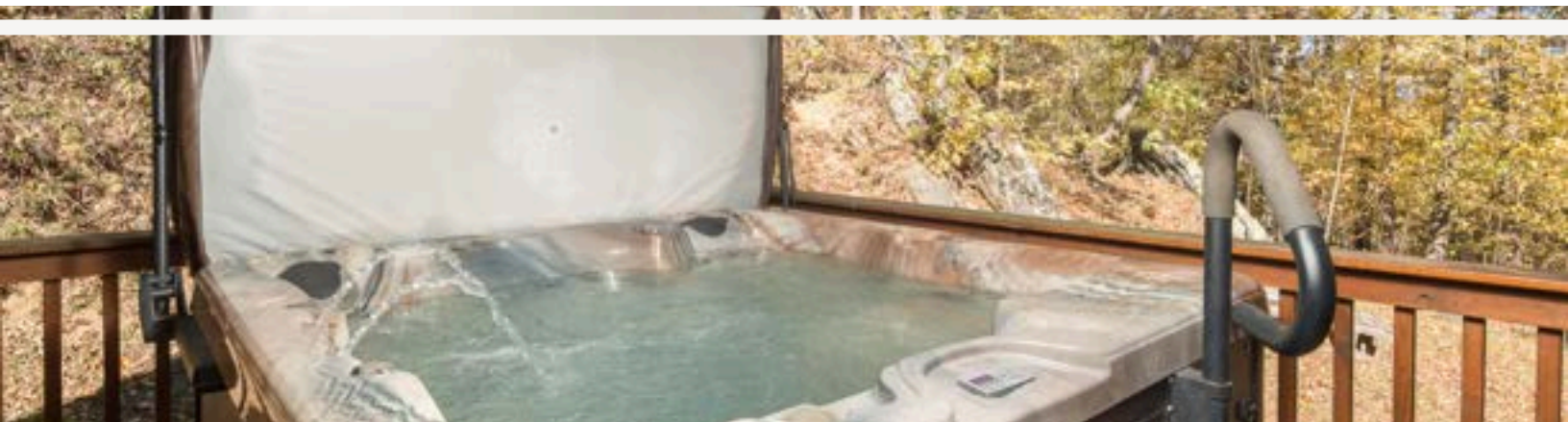
Turn on the hot tub:

- The heat should be set to a comfortable temperature but if not you can adjust by pressing the temperature button up or down.
- If you want the jets on just press the jet button and the air button
- If you want light inside the tub, just press the light button.

To close the cover:

- Just pull the cover down.
- Lock the 2 front latches.

*For safety and cleanliness please close lid when not in use.



TV INSTRUCTIONS

Living Room

- Press power on the Roku stick and select which app you would like to log into.
- Turn on the surround sound by pressing the green power button located on the surround sound remote.

Loft

- Press power on the Roku stick and select which app you would like to log into.

Main Bedroom

- Press power on the Roku stick and select which app you would like to log into.

Moose Room

- Press power on the Roku stick and select which app you would like to log into.

Bear Room

- Press power on the Roku stick and select which app you would like to log into.

Game Room

- Press power on the Roku stick and select which app you would like to log into.

***if a TV is not working be sure to check the input**



HOME GUIDE

ENTERTAINMENT

- Televisions in each room with Roku:
 - Preloaded with Netflix, Hulu, Disney+, Amazon Prime, and YouTube and more.
 - Log in using your own accounts.
- Board Games: A selection of games and cards can be found in the game room as well as a Pac-man arcade and foosball.
- Popcorn Machine (Game Room):
 - Add 1tbs oil/4tbs kernels. Turn on and close door
 - Supplies are stored in the kitchen or near machine.

FAMILY-FRIENDLY AMENITIES-USE AT YOUR OWN RISK

- Pack-n-Play (sheets not included), high chair, baby gates and children's dishware. **It is the responsibility of the guest to check these items for safety.
- Porch gate can be latched. Check for safety as well.

COMFORT OPTIONS

- Towels and washcloths are on each bed. And in chest behind sofa for those sleeping on sofa bed.
- Extra pillows, blankets, heaters, and fans in each bedroom closet.
- For safety, please unplug heaters when not in use, as they will automatically turn back on.
- Pull-Out sofa linens and towels are stored in the hope chest behind the game room sofa.
- There are heated vents in each bathroom. The knob to turn it on is by the lights in the main bedroom and on the wall by the toilets in the downstairs bathrooms.. To turn it on just turn the knob to the amount of minutes that you would like it to run. It will turn off automatically.



*

HOME GUIDE...CONTINUED

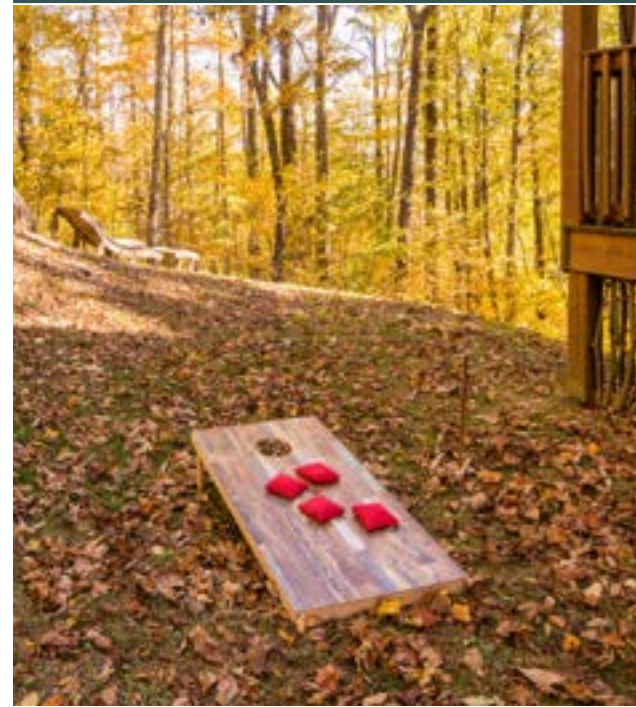
OUTDOOR AMENITIES

- Gas Grill + Fire Pit (side deck): Connected to a direct propane line — no tank needed. Turn knobs (on deck floor) off after use. Lighter in kitchen island.
- Grill tools and cleaning brush are in the kitchen cabinet near fridge.
- Wood-Burning Fire Pit: Feel free to gather nearby wood. Avoid use on windy days (we have lots of wind) and fully extinguish before leaving. We do not provide firewood but it's available for sale in town. We find the Mast General in Valle Crucis to be the cheapest.
- Games-located on the front porch. Please put back after use so that weather doesn't ruin the wood.
- Motion sensor lights line the path to fire pit.



GARBAGE

- Put trash in bear-proof trash cans outside.
- Overflow trash? Take to the Foscoe or Valle Crucis Solid Waste Convenience Center (Bears will likely get into trash if not locked in bear proof trashcan). For location and hours go to https://www.wataugacounty.org/App_Pages/Dept/Sanitation/hours.aspx.
- You can also put the recycle trash bag in the bear proof trash cans. We will separate.

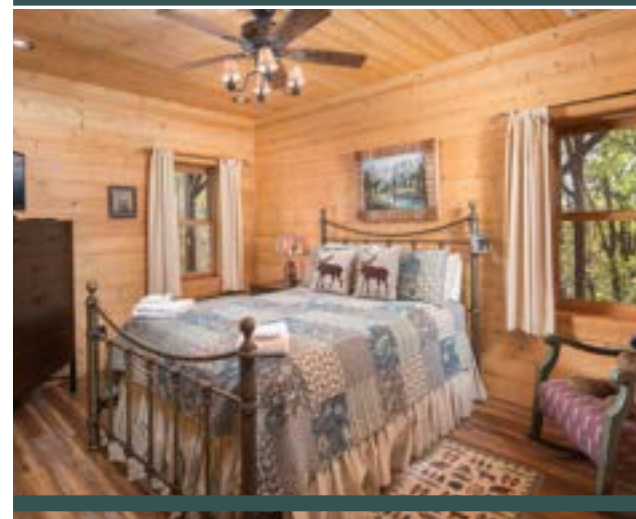


SUPPLIES AND SAFETY

- First Aid Kit is located under the kitchen sink.
- Cleaning Supplies are also under the kitchen sink.
- Flashlights are stored in the kitchen island drawer.

PLUMBING REMINDER

- We're on a septic system — please flush toilet paper only or it will back up and possibly disrupt your stay.



RESTAURANT RECOMMENDATIONS

1 Gideon Ridge, Blowing Rock

In 2023, Trip Advisor named The Restaurant at Gideon Ridge Inn the #2 Fine Dining Restaurant and the #3 Date Night Restaurant in the US.



2 Artisanal, Banner Elk

Contemporary American Fine Dining in a rustic yet elegant environment. Innovative and progressive thinking in a farm to table approach, only working with the highest quality ingredients.



3 Holloway Corner Kitchen, Foscoe

Easy going, family-friendly eatery dishing up American comfort food.



4 Daniel Boone Inn, Boone

Daniel Boone Inn Restaurant serves Southern Comfort food and has been featured in both Southern Living and Our State magazines.



5 Stonewalls, Banner Elk

Stonewalls is a landmark dining destination located in the heart of Banner Elk. Enjoy your favorite steaks, prime rib, seafood or chicken entrees with salad bar.



6 Stick Boy Bread, Boone

Stick Boy Bread Company is a family-owned artisan bakery offering from fresh baked breads, breakfast pastries, steaming cappuccinos, desserts, wedding cakes and more.



ABOUT 4 MILES FROM US

1 Mast General Store and Annex

The Original Mast General Store was established in 1883. Today, it offers friendly service and a broad selection of goods, including locally produced food, hundreds of old-fashioned candies, kitchen supplies, housewares, souvenirs, and children's toys and games. The annex offers more shopping and is just down the street from the main store.



2 River Birch Nordic Sauna

Specializing in traditional wood-fired heat saunas complemented by an invigorating outdoor cold water bucket shower or cold plunge.



3 Valle Crucis Community Park

Just behind the Mast General Store Annex, there's a lovely little park with a flat, paved trail that's perfect for an easy walk. It winds around the park and follows the river, so you get some great views along the way. There are plenty of picnic tables, wide open spaces for playing, and—best part—free live music every summer Friday night.



4 Ice Cream at the Mast General

Right behind the Mast General Annex, there's a small ice cream shack by the creek—perfect for cooling off and dipping your feet in the water.



5 Crab Orchard Falls

Crab Orchard Falls is just a short half-mile hike from the trailhead, and the parking lot alone offers a stunning views of the valley.



6 Valle Tavern as Mast Farm Inn

Across from the Mast Inn, there's a cozy barn where you can grab a glass of wine, or beer and plenty more. You can play cornhole, hang out with the horses and goats, and on Saturdays from 4 to 6, enjoy free live music.



THINGS TO DO

1 Wisemans View-Linville

Experience one of the most breathtaking views in the NC mountains. Nestled in Linville at the end of a 4-mile gravel road. Please note: the road can be rough depending on recent maintenance. Nearby, you'll find Linville Falls and a local winery--perfect for a day of exploring. Stop by Old Hampton BBQ for lunch.



2 Grandfather Vineyard-Banner Elk

Excellent winery with music, food trucks, chairs, umbrellas & tables, mountain scenery & a stream, plus wines, of course.



3 Old Hampton BBQ

Not only is the food here delicious, but you can enjoy a local band playing the banjo during lunchtime. The area also has antique shops and locally made crafts to explore. It's in Linville, just a short drive from Grandfather Mountain.



4 Hawknest Zipline-Seven Devils

With 20 zipline cables they have over 4 miles of zipline fun. Zip through the trees, over creeks, and lakes all with incredible views. Open year round. Ages 5 and up.



5 Mystery Hill-Blowing Rock

Fun! Mystery Hill explores the relationship of science, optical illusion and natural phenomena in a hands-on entertainment center. Mystery House * Appalachian Heritage Museum * Native American Artifacts Museum.



6 Gem Mountain-Spruce Pine

There are many Gem Mines in the area, we mention this one because it was featured on the Learning Channel and The Travel Channel.



DRIVING DISTANCES

Watauga Medical Center and ER: 13 miles
Nearest Grocery Store: Lowes Food in Banner Elk: 9.2 miles
Dollar General: 4.4 miles
Gas Station: Foscoe Quality Plus: 4.1 miles
App Ski Mountain: 15 miles
Sugar Mountain Ski: 11 miles
Beech Mountain Ski: 15 miles
Tweetsie Railroad: 15 miles
Alpine Rollar Coaster: 10 miles
Hawksnest ziplining: 9.2
Lineville Caverns: 28 miles
Lineville Falls: 24 miles
Fun N Wheels go cart: 9.9
Elwood's Hatchet House: 13 miles
Foscoe Gem Mining: 4.4 miles
Grandfather Horse Stables: 5.5 miles
Wahoo Adventures rafting, tubing and fishing tour guide: 16 miles
Grandfather Mountain: 18 miles
Grandfather Winery: 4.7 miles
Blue Ridge Parkway entrance: 16 miles
Julian Price Park: 13 miles
Wildcat Lake: 12 miles
Bass Lake: 12 miles
Valle Crucis Park: 3.9 miles
Mast General Valle Crucis: 4.1
App State: 11 miles
Lees-McRae College: 10 miles
Downtown Boone: 11 miles
Downtown Banner Elk: 10 miles
Downtown Blowing Rock: 12 miles
Beech Mountain: 17 miles
Valle Crucis: 4 miles



REVIEWS

Reviews play a key role in building trust within the Airbnb community, which is why I make it a point to leave one for every guest. If you enjoyed your stay, I'd be so grateful if you took a moment to leave a review as well! Hearing what you loved about the place truly means a lot to me. If anything isn't quite right during your visit, please don't hesitate to reach out — I'm always happy to fix things quickly to the best of my ability. My goal is to provide you with a seamless, memorable, 5-star experience because I truly want you to enjoy your time at Honey Bear Cabin and your vacation. For those unfamiliar with how Airbnb's rating system works (it is different from hotels), I've included their guidelines below to help clarify how reviews are viewed on the platform, as it is much different than hotel rating systems.

GUIDE FOR AIRBNB RATING SYSTEM



I enjoyed my stay here. My host had good communication



Good stay but there were many issues not addressed by host



There were major issues with my stay that the host did not try to address



The place should be shut down



Worst place I've ever stayed. Host should be banned



THANK YOU FOR STAYING WITH US!

We are glad to host you in your short stay at Honey Bear Cabin! We hope you will come back soon.



FOLLOW US
@HONEYBEARCABINNC

