



# Strategies for Wealth Preservation: Safeguarding Your Financial Future

37<sup>th</sup> NCPACA  
Annual Professional Development  
Convention

Richard Seo, Partner  
August 30, 2024



---

# ABOUT CROWE

# About Crowe

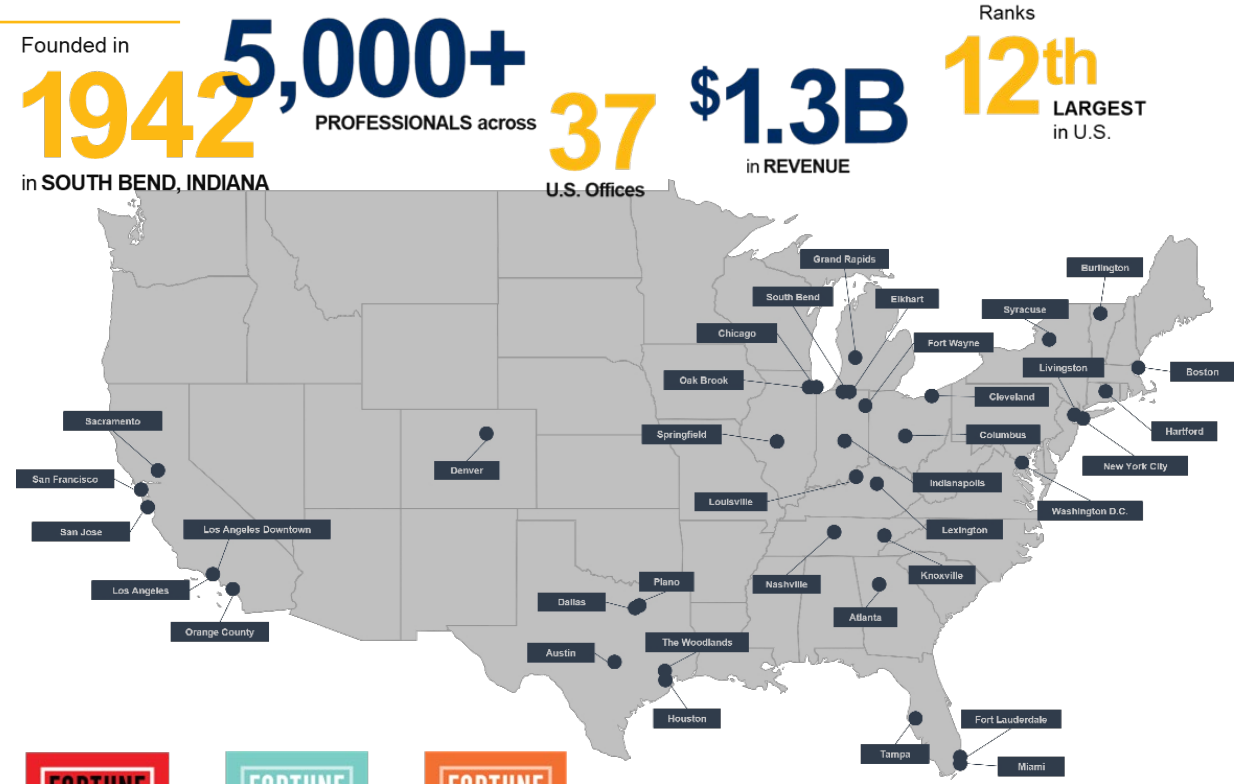
Crowe is a public accounting, consulting and technology firm that combines deep industry and specialized expertise with innovation.

By listening to our clients, we learn about their business and the challenges they face. Our dedicated teams strive to deliver exceptional client service while upholding our core values and strong professional standards. We invest in tomorrow because we know smart decisions build lasting value for our clients, people, and profession.

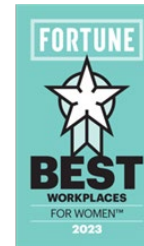
Our purpose is *Shaping Your Better Tomorrow. Together. Today.* It's the standard we live by and reflects what we hold important as both a firm and as individuals.

## Deep Specialization

Our vision is built on deep specialization and a “One Crowe” approach – a focus on our clients, our people, and the hallmarks of our profession: integrity, objectivity, and independence. By aligning our specialists along industry lines, we bring deeper and broader knowledge to our services. This industry specialization gives us a better view to understand your business and the unique challenges you face. We can help you with your market and business challenges because of our proven reputation and track record for credibility among key industry players, including professional organizations.



From Fortune. © 2024 Fortune Media IP Limited. All rights reserved. Used under license.



From Fortune. © 2023 Fortune Media IP Limited. All rights reserved. Used under license.



From Fortune. © 2023 Fortune Media IP Limited. All rights reserved. Used under license.



From Fortune. ©2024 Fortune Media IP Limited All rights reserved. Used under license. Fortune and Fortune 100 Best Companies to Work For® are registered trademarks of Fortune Media IP Limited and are used under license. Fortune and Fortune Media IP Limited are not affiliated with, and do not endorse products or services of Crowe LLP.



# About Crowe (continued)

The Crowe global network consists of more than 200 independent member firms, business associates, and correspondent firms.

All share a commitment to delivering technical excellence and the highest standards of client service. These network leaders provide global thought leadership on key issues and opportunities impacting multinational clients as well as set standards and best practices for service delivery.

Our global core services include:

- Accounting and Auditing
- Consulting and Advisory
- International Tax

## Crowe Global Network

Globally Branded: Ranked Among the Top 10 Global Accounting Networks Crowe Global member firms are known for their local knowledge, expertise, and experience balanced by a global reputation for the highest quality in audit, tax, advisory, and risk services. They are unified through a shared commitment for impeccable quality service, highly integrated service delivery processes, and a common set of core values and management philosophies that guide their decisions daily.

This unique combination of talent provides Crowe Global the worldwide capabilities of a highly integrated network to deliver value to multinational clients doing business across borders.

- Leadership. Each member firm is well established as a leader in its national business community and is staffed by nationals, with a comprehensive knowledge of local laws and customs which is important to clients undertaking global ventures or expansion into other countries.
- Quality, Professional Services. High-quality professional services (audit, tax, and advisory) are basic to the Crowe Global operations. Standardized operating procedures for global work have been developed.
- Global Strength. Key regions have been established and are respectively coordinated by Regional Executives



# Agenda

---

**What & Why Wealth Preservation?**

---

**Type of Risks**

---

**Strategy Ideas**

---

**What Next?**

---

**Q&A**

# WHAT IS WEALTH?

---

**Financial**

**Physical**

**Human  
Capital**

**Social**

**Intellectual**

**Emotional**

**Environmental**

# WHY WEALTH PRESERVATION?

---

**Pamilya (Family)**

**Kalayaan (Freedom)**

**Pamana (Legacy/Heritage)**

**Pamumuhay (Lifestyle)**

# TYPE OF RISKS

---

**Market  
Risk**

**Credit  
Risk**

**Liquidity  
Risk**

**Operational  
Risk**

**Inflation**

**Economic  
Policy  
Uncertainty**



# STRATEGY IDEAS

---

**Tax-Efficient  
Investment**

**Asset  
Protection**

**Estate  
Planning**

**Risk  
Management**

**Charitable  
Giving**

# TAX-DEFERRED INVESTMENT

---

**Tax-deferred Accounts (income deferral)**

**Capital gains management (capital loss harvesting)**

**Qualified Small Business Stock (QSBS)**

**Qualified Opportunity Zones**

# ASSET PROTECTION

---

**Legal Matters in Order (POA, Agents and etc.)**

**Trust Structures (domestic and offshore)**

**Insurance (life, annuities, liability and etc.)**

**Family Limited Partnership (FLP)**

# ESTATE PLANNING

---

**Wills and Trusts**

**Gifting Strategies (annual and lifetime gift exemptions)**

**Generation-Skipping Transfer (GST)**

**Legacy Succession Planning**

# RISK MANAGEMENT

---

**Diversified Investment Portfolio**

**Asset Location (physical and account)**

**Legal Entity Structure**

**Periodic Maintenance and Update**

# CHARITABLE GIVING

---

**Philanthropic Giving**

**Private and Public Foundation**

**Charitable Trust**

**Donor-Advised Funds (DAFs)**

# WHAT NEXT?

---

**RESET Lifestyle Goals**

**REASSESS Current Plans**

**REVISE/UPDATE For Future Plans**

**REVISIT and REPEAT**



# Q & A

---

"Crowe" is the brand name under which the member firms of Crowe Global operate and provide professional services, and those firms together form the Crowe Global network of independent audit, tax, and consulting firms. "Crowe" may be used to refer to individual firms, to several such firms, or to all firms within the Crowe Global network. The Crowe Horwath Global Risk Consulting entities, Crowe Healthcare Risk Consulting LLC, and our affiliate in Grand Cayman are subsidiaries of Crowe LLP. Crowe LLP is an Indiana limited liability partnership and the U.S. member firm of Crowe Global. Services to clients are provided by the individual member firms of Crowe Global, but Crowe Global itself is a Swiss entity that does not provide services to clients. Each member firm is a separate legal entity responsible only for its own acts and omissions and not those of any other Crowe Global network firm or other party. Visit [www.crowe.com/disclosure](http://www.crowe.com/disclosure) for more information about Crowe LLP, its subsidiaries, and Crowe Global.

The information in this document is not – and is not intended to be – audit, tax, accounting, advisory, risk, performance, consulting, business, financial, investment, legal, or other professional advice. Some firm services may not be available to attest clients. The information is general in nature, based on existing authorities, and is subject to change. The information is not a substitute for professional advice or services, and you should consult a qualified professional adviser before taking any action based on the information. Crowe is not responsible for any loss incurred by any person who relies on the information discussed in this document. © 2022 Crowe LLP.