



# East Toledo SENIOR CENTER



Menu for June 2026

For information on individual ingredients  
please see a staff member.

Food allergy notice: Please be advised that food  
prepared here may contain these ingredients:  
MILK, EGGS, WHEAT, SOY, PEANUTS, TREE NUTS,  
FISH & SHELLFISH.



East Toledo Senior Center Dining Site 1001 White  
Street Toledo, Ohio 43605. **To make lunch  
reservations, please call 419-691-2254 ext. 9**  
Suggested donation is \$2.50 for those aged 60  
and over.

A choice of white or chocolate milk is offered  
daily with each meal.

# June 1<sup>st</sup> ~ June 5th

## **MON~ 6-1 SPAGHETTI**

Corn, Pears & Breadstick

## **TUES~ 6-2 BEEF TACOS**

Refried Beans & Mandarin Oranges

## **WED~ 6-3 BOLOGNA SANDWICH**

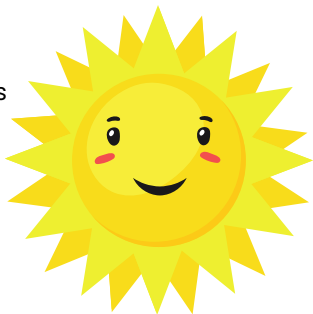
Broccoli, Cottage Cheese & Fruit Cocktail

## **THURS~ 6-4 TUNA SALAD SANDWICH**

Chips & Apple

## **FRI~ 6-5 MAC WRAP**

French Fries & Peaches



**June 8<sup>th</sup> ~ 12<sup>th</sup>**

**MON~ 6-8 CHICKEN CORDON BLEU**

Broccoli, Carrots, Peaches & Bread

**TUES~ 6-9 PATTY MELT**

Potato Salad, Side Salad & Seasonal Fruit

**WED~ 6-10 PIZZA LUNCHEON**

**Sponsored lunch must RSVP to attend!**  
**No Normal Lunch Provided today!**

**THUR~ 6-11 CREAMY REUBEN SOUP**

Side Salad & an Orange

**FRI~ 6-12 STUFFED PEPPERS**

Mashed Potatoes, Pears & Bread w/  
Butter



# June 15<sup>th</sup> ~ 18th

## **MON~ 6-15 PEPPERONI STUFF BREAD STICKS**

Corn, Fruited Jell-O & Green Beans

## **TUES~ 6-16 SWEDISH MEATBALLS**

Noodles, Breadstick, Side Salad & Pears

## **WED~ 6-17 TUNA MAC**

Peas, Carrots, Roll w/ Butter & Fruit  
Cocktail



## **THUR~ 6-18 TURKEY GRAVY**

Mashed Potatoes, Peas & Onions, Bread  
w/ Butter & Tropical Fruit Mix

## **FRI~ 6-19 CLOSED FOR JUNETEENTH**

**Closed!!!**

**June 22<sup>nd</sup> ~ June 30<sup>th</sup>**

**MON~ 6-22 PORK SANDWICH**

Mashed Potatoes, Green Beans & Pears

**TUES~ 6-23 NO LUNCH TODAY**

**WED~ 6-24 BRATS & POTATOES**

Corn, Apple Sauce & Garlic Bread

**THUR~ 6-25 SAUSAGE BISCUITS & GRAVY**

Hash Browns & Peaches

**FRI~ 6-26 CAFE DAY!!**

See Seperate Order Sheet for Lunch Options!

**MON~ 6-29 FISH SCAMPI**

Noodles, Broccoli & Cheddar Biscuit

**TUES~ 6-30 TURKEY & CHEESE SANDWICH**

Chips & Banana



# HOW CAFE DAY WORKS!

THERE IS A SEPERATE ORDER FORM FOR THIS DAY! YOU MUST PICK 1

ENTREE, 2 VEGETABLES & A FRUIT.



## Example Order form for Cafe Day

### Cafe Day

#### Entree Options

- Open Face Roast Beef
- Club Sandwich
- Chicken Salad Sandwich

#### Vegetable Options

- Mashed Potatoes
- Side Salad
- French Fries

#### Fruit Options

- Pears
- Peaches
- Banana