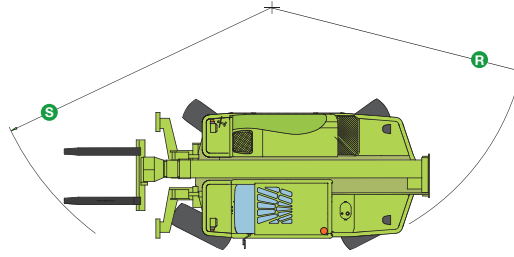
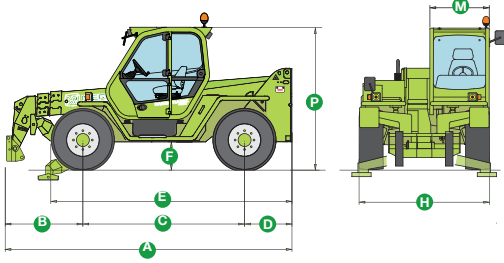


# PANORAMIC P 38.12

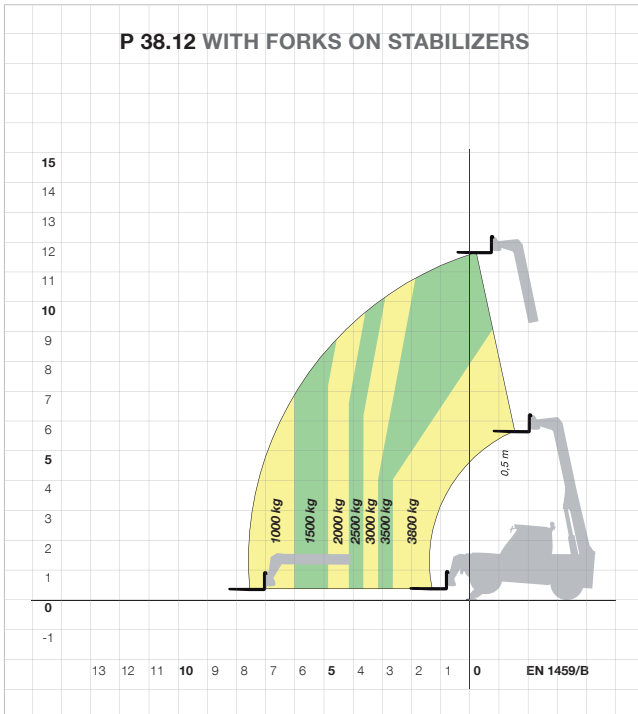
## TECHNICAL DATA

P 38.12 / P 38.12 PLUS



COMPLIANT EN 15000

### P 38.12 WITH FORKS ON STABILIZERS



### DIMENSIONS

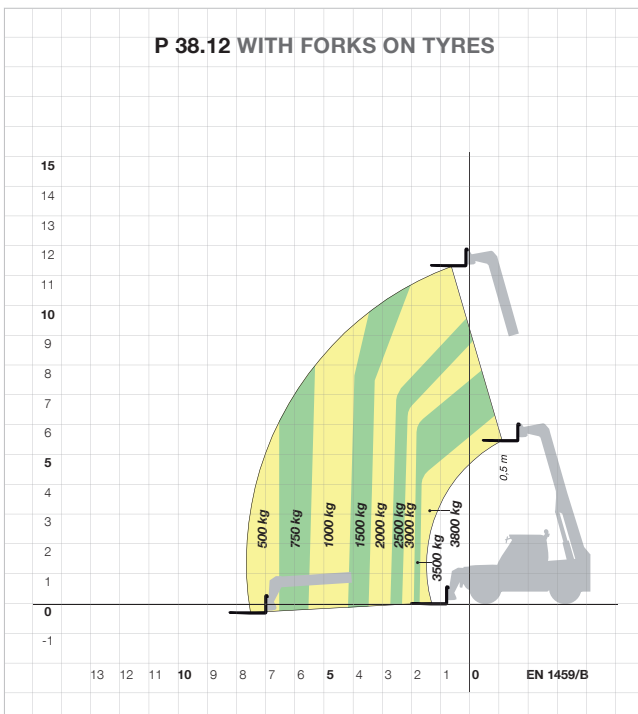
A (mm)	4850	H (mm)	2220
B (mm)	1285	M (mm)	995*
C (mm)	2750	P (mm)	2440
D (mm)	815	R (mm)	3920
E (mm)	4100	S (mm)	4900
F (mm)	480		

\*Internal length useful.

### CHARACTERISTICS AND PERFORMANCE

	P 38.12
Total weight unladen, with forks (kg)	8550
Maximum load capacity (kg)	3800
Maximum lift height (m)	11.6
Maximum forward reach (m)	7.6
Lift height at maximum load capacity (m)	9.2
Forward reach at max. load capacity (m)	2.6
Load capacity at maximum height (kg)	3500
Load capacity at max. forward reach (kg)	1000
Boom side-shift (mm)	±330
Frame levelling (%)	±10
Turbo diesel engine (make/cylinder)	Perkins/4
Tier 3 engine power (kW/HP)	74.5/101 <sup>(1)</sup>
Speed in 1st gear range (kph)	14 <sup>(1)</sup>
Speed in 2nd gear range (kph)	40 <sup>(1)</sup>
Hydro-pneumatic suspension EAS	○ <sup>(2)</sup>
Hydro-pneumatic suspension BSS	○ <sup>(2)</sup>
Fuel capacity (l)	150
Hydraulic gear pump (bar-l/min)	-
Load-Sensing hydraulic pump (bar-l/min)	210-108
Hydraulic oil capacity (l)	105
Electrical circuit (V)	12
Battery (Ah)	100
FOPS (ISO 3449) and ROPS (ISO 3471) cab	●
Hydraulic lever controls	●
Electro-mechanical joystick controls	○
Electronic joystick controls	○
Tac-Lock attachment coupling	●
Auxiliary boom hydraulic service	●
Hydrostatic transmission	●
Finger-Touch direction reversing control	●
Inching Control	●
Permanent four-wheel drive	●
Automatically locking parking brake	●
Manual battery isolator	●
Tyres	405/70-20
Four cab working lights (2 f. + 2 r.)	○
Differential lock (front + rear or rear only)	○
Manual air conditioning system	○

### P 38.12 WITH FORKS ON TYRES



● Standard. ○ Option.

Performance figures refer to the machine equipped with forks, operating on stabilisers.

(1) Plus version only. The basic model has a speed of 7-25 kph and a engine of 62.5 kW (85 HP); (2) BSS and EAS suspension can not be fitted together.