



ROTO 40.16  
ROTO 40.16 S



**PERFORMANCE AND FEATURES**
**ROTO 40.16**
**ROTO 40.16 S**
**PERFORMANCE**

Total unladen weight (kg)  
Maximum capacity (kg)  
Lifting height (m)  
Maximum reach (m)  
Maximum operating height (m)  
Maximum operating reach (m)  
Capacity at maximum height (kg)  
Capacity at maximum reach (kg)  
Lateral boom movement (mm)  
Tilting correction (%)  
Boom sections

12900  
4000  
15,8  
13,2  
10,1  
5,5  
2500  
700  
-  
-  
3

13000  
4000  
15,8  
13,2  
10,1  
5,5  
2500  
700  
-  
+/-10, +/-8  
3

**POWERTRAIN**

Turbo motor  
Displacement/cylinders  
Engine Power (kW/HP)  
Anti-pollution technology  
Reversible fan  
Maximum speed (km/h)  
Fuel tank (l)  
AdBlue tank (l)  
Hydrostatic transmission  
EPD  
Axles  
Reduction hub  
Machine brakes  
Automatic parking brake

Deutz TCD3.6  
3600/4  
55,4/74  
EURO IIIB, DOC  
-  
25  
140  
-  
● - 2V  
●  
Drop portal  
RR700  
Dry discs  
●

Deutz TCD3.6  
3600/4  
85/115  
EURO IV, SCR+DOC  
-  
40  
140  
18  
● - 2V  
●  
Drop portal  
RR700  
Dry discs  
●

**HYDRAULIC**

Hydraulic pump  
Flow rate/pressure (l/min – bar)  
Hydraulic tank  
Hydraulic outlet at the top of the boom  
Rear hydraulic outlets

LS + FS  
103 - 250  
162  
●  
-

LS + FS  
103 - 250  
162  
●  
-

**CAB**

Cab configuration  
MCDC  
FOPS LIV II cab  
ROPS cab  
Cab commands  
Tilting Cab  
Reverse shuttle

PREMIUM  
-  
●  
●  
Electronic joystick control  
-  
Dual Reverse

PREMIUM  
-  
●  
●  
Electronic joystick control  
-  
Dual Reverse

**CONFIGURATION**

Cab suspension  
Boom suspension  
Suspension on axles  
Work headlights on cab  
Sun blind  
Tac-lock  
Provision for a platform  
Two floating forks  
Inching-Control  
Four-wheel drive  
Four-wheel steering  
Three steering modes  
Standard tyres  
Optional tyres  
Stabilisers  
Turret rotation  
Type approval as an agricultural tractor  
Approval with PNEUMATIC braking  
Approval with HYDRAULIC braking  
PTO  
3-point linkage

-  
-  
-  
○  
●  
●  
●  
●  
-  
●  
●  
●  
●  
400/70-20"  
405/70-R20  
On/Off  
415°  
-  
-  
-  
-

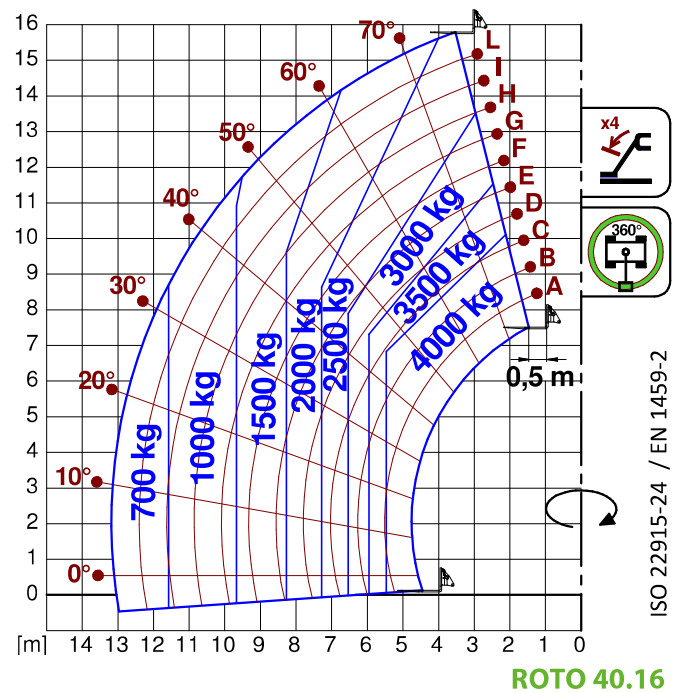
-  
-  
●  
○  
●  
●  
●  
●  
-  
●  
●  
●  
●  
400/70-20"  
405/70-R20  
On/Off  
415°  
-  
-  
-  
-

**DIMENSION**

Width (mm)  
Height (mm)  
Length (mm)  
Wheelbase (mm)

2240  
3010  
6280  
2860

2240  
3010  
6280  
2860



ROTO 40.16

GLOSSAR

SCR

**Selective Catalyst Reduction**, solution used for the reduction of NOx in the exhaust gases through the injection of a liquid - UREA (AdBlue) - into the exhaust gases.

DPF

**Diesel Particulate Filter**, a solution used to reduce fine particle emissions in exhaust gases

DOC

**Diesel Oxidation Catalyst**, a solution used to reduce carbon monoxide (CO) and hydrocarbons in exhaust gases

EGR

**Exhaust Gas Recirculation**, a solution used to reduce NOx in exhaust gases by recirculating gas inside the combustion chamber of the engine.

1-2V

1 or 2 speed **Merlo gearbox**

CVTronic

**Continuous variation Merlo gearbox**, for constant acceleration without loss of torque

EPD

**Eco Power Drive**, Merlo electronically-controlled hydrostatic transmission Electronic, enables effective RPM management in order to reduce overall fuel consumption by the machine

EPD Plus

In addition to the **EPD** Control, it is also possible to work using Speed Control (maintaining a constant travel speed) and Heavy Load (management of RPM in order to maximise performance for tasks such as: bucketing operations, heavy duty unloading, etc.)

EPD Top

In addition to the **EPD Plus** control function, this enables the RPM to be managed directly using the joystick

Gear

**Fixed displacement pump with gears**, combined with an open centre hydraulic distributor

LS

Variable displacement pump with **Load Sensing** control, combined with a closed centre hydraulic distributor

LS+FS

Variable displacement pump with **Load Sensing** control, combined with a closed centre hydraulic distributor equipped with solenoid valves and **Flow Sharing** control.

Kabine ECO/PREMIUM

**MODULAR** type cabin with simplified or PREMIUM equipment

MCDC

Merlo Dynamic Load Control, electronic control of the machine's anti-overflow system.  
 • **Light**: Simplified version; • **Complete**: Version with display in cab.

FOPS

Falling object protective structure, the system which shields the operator from heavy objects falling onto the cab. Two levels:  
 • **FOPS Liv I**: Object with a weight of 45 kg falling from 3 metres • **FOPS Liv II**: Object with a weight of 227 kg falling from 5.2 metres

ROPS

**Roll-over protection system** (or roll-over protection structure), the system that protects the operator if the vehicle rolls over

Finger Touch

Driving direction inversion system mounted on the steering column

Dual Reverse

Dual driving direction inversion system, on both the steering column and the joystick

Tac-lock

Hydraulic attachment clamping system controlled from the cab