


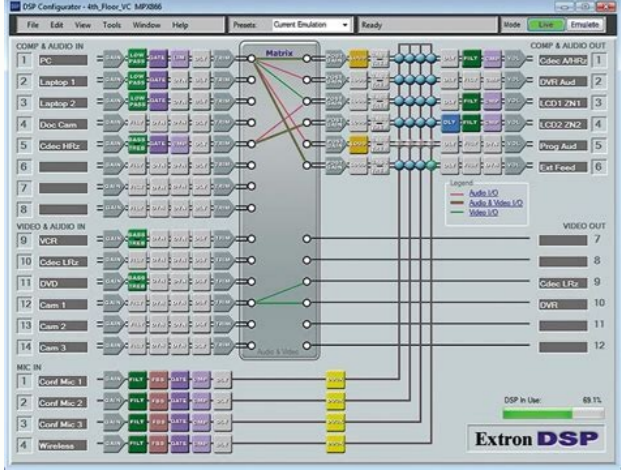
I'm not robot  reCAPTCHA

I'm not robot!

Audxeon dsp software

Audxeon dsp review. Audxeon dsp software download. What is dsp software. Audxeon dsp tuning software. Hardware dsp vs software dsp.

Version Description 4.80b ISA - An issue with the Input Signal Analyzer in the M FOUR DSP and M SIX DSP has been fixed Advanced Gain Setup - An issue with the "Solo" function in the Advanced Gain Setup has been fixed Several minor text and label adjustments Several minor bug fixes 4.80a HELIX V TWELVE DSP MK2 has been implemented DCM - Advanced Gain Setup has been further extended to allow individual channel gain setups corresponding to the jumper positions. The jumper positions will be automatically detected and the displayed voltage ranges will be adjusted accordingly ATM - new speaker categories named "Surround L" and "Surround R" have been implemented Help - This menu has been extended by ISA, ATM & RTA quick start guides New communication backend has been implemented to prepare further features in upcoming versions RTA - fixed a visualization issue when the color theme has been changed ATM - fixed an issue with the selection of the measurement channels Several minor text and label adjustments Several minor bug fixes 4.79a HELIX DSP 3S and HELIX DSP MINI MK2 have been implemented. RTA - The minimum height of the RTA window has been reduced. RTA - Issues with the microphone calibration file and reference curve file load function have been fixed. HELIX DSP 3S and DSP MINI MK2 - A new ACO feature called "Advanced Noise Suppression" has been added to the ADEP 3 Class SB compatibility mode to eliminate potential power off noises. MATCH M 5.4DSP - The maximum adjustable output time delay has been increased to 20.8 ms per channel. CONDUCTOR - A new firmware is available and will be installed through the DSP PC-Tool software. The new software allows to switch between two digital signal inputs (if the DSP is equipped with optical & coaxial digital inputs) by pushing the control knob while the digital signal source is selected in the input signal selection menu.



In addition the setup switch menu now always indicates the loaded setup correctly even if the sound setup has been changed through the DSP PC-Tool while connected to a PC. Several minor text and label adjustments. Several minor bug fixes. Please note: An ACO firmware update is required for this DSP PC-Tool update and will be started after connecting to the DSP. Make sure to save all Sound Setups in advance on your hard disk. All DSP adjustments and configurations will be reset during the update process and need to be reloaded after the update. The ACO Update can only be performed through the on-board USB port of the ACO-based DSP. 4.77a HELIX M SIX DSP, MATCH M 5.4DSP and UP 10DSP have been implemented RTA - the menu bar has been reworked. The selection of "AutoSet" and "SetEQ" has been separated. The second menu bar will change its functionalities according to the selected tuning mode. The second menu bar is now showing the selected channels which will be used for the Automatic EQ tuning. In addition it shows the deviation between the measurement curve and the reference curve within the selected frequency range. It also shows the number of measurement iterations if the AutoSet tuning mode is selected. The "Save Graph" button is now found in the top right corner and can be left-clicked for a screenshot of the full RTA window or right-clicked if only the graph should be saved. RTA - the "RTA Settings" page has been reworked. It is now possible to load Microphone calibration files through the UI as well as activate/deactivate the usage of the calibration file. The "AutoSet" tuning mode can be further configured by adjusting the stop conditions (maximum accepted deviation, the number of measurement iterations and measurement time per iteration). The RTA graph configuration got a new adjustment called "color theme" which changes the display of the graph section. The reference curve can now be set up in a similar way than normal EQ bands by using mouse or keyboard. In addition the last used custom reference curve now stays stored in the DSP PC-Tool. IO - The "Advanced Import Manager" has now also been implemented to the InputEQ section. It gets started by right-clicking on an input signal in the InputEQ or pressing the keyboard buttons "I" or "I" after selecting a channel. The "Advanced Import Manager" allows to import EQ data including allpass filters from channel input data of any existing afpx file (does not need to be made with the same device type).

Factory Outlet

Factory has imported the mode
You can use directly without tuning!

8-way RCA output Bi-Amp Dual Processor
6-way High level Output
4-way High level Input

31 Band EQ
4x60W RMS
2x30W

RM15 off Min. Spend RM540
Valid Till: 31.07.2020

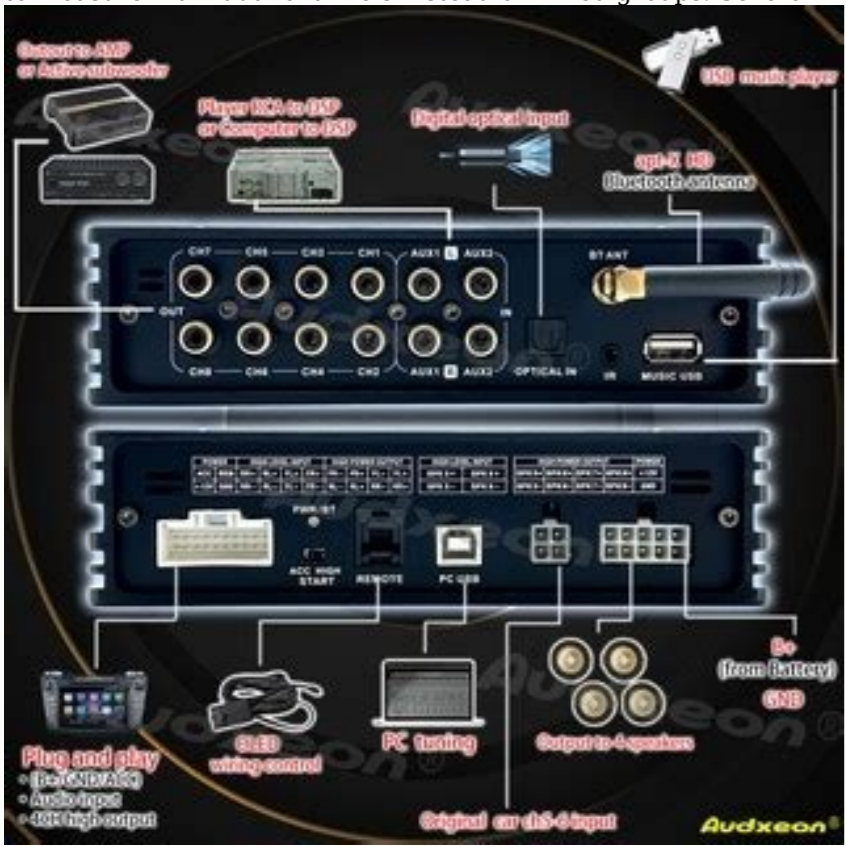
Claim

IO - New output channel names have been added i.e. Surround L Full, Surround R Full, Front Subwoofer L (will not be Sub-Remote controlled), Front Subwoofer R (will not be Sub-Remote controlled), etc. DCM / Signal Management - An input signal clipping indicator has been added for all devices which are equipped with a software-controlled gain adjustment under the "Main Input" section. A small wave symbol icon has been added which is grey when the input signal condition is good and turns into a red square-wave icon when the input signal gets clipped. Depending on the hardware generation of the device the accuracy of this function might vary within a small range. DCM / Signal Management - A new function called "Advanced Gain Setup" has been added. This function is only available for the new MATCH UP 10DSP in this release but will be implemented into more devices in near future. The "Advanced Gain Setup" is a new option beside the "Standard Gain Setup" which allows to set up the input sensitivity by channel pairs for DSPs with a high number of input channels. It also allows to mute all output channels at once to easily play test tone signals for configuring the input signal sensitivity.

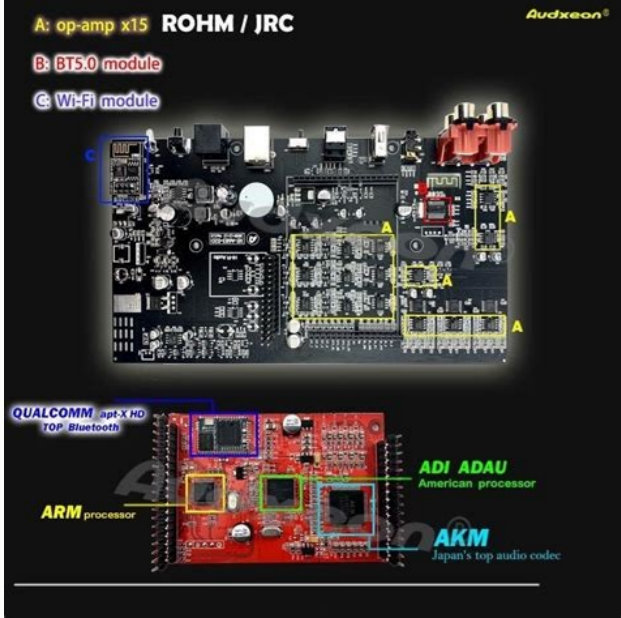
OLED Wiring Control

4CH high level input 4CH AUX 31-Band EQ
8CH high level output Japan JRC op-amp
8CH RCA output American ADI Processor

It also allows to select individual channel pairs through the "solo" function to check their input signal strength and their clipping state. Beside this the "Advanced Gain Setup" will also be able to read out jumper positions from devices of the latest hardware generation. DCM - The "Power Save Mode" configuration is now showing a checkbox for each configuration option. Load - The load setup dialog has been reworked. Help - A new help symbol has been added to the menu in the top-right corner which will actually show the keyboard shortcut map. In future this section will contain additional information about our unique functions in the DSP PC-Tool. New keyboard shortcuts have been added. A detailed overview can be found in the help menu or in the DSP PC-Tool launcher. One of the important new keyboard shortcuts is the double press on an F-Key to select a unique channel while temporarily removing its links to other channels. A single press on the same button will add the link again. This keyboard shortcut can also be used in the RTA to measure individual channels instead of linked groups. Several minor text and label adjustments Several minor bug fixes Please note: An ACO firmware update is required for this DSP PC-Tool update and will be started after connecting to the DSP. Make sure to save all Sound Setups in advance on your hard disk.



All DSP adjustments and configurations will be reset during the update process and need to be reloaded after the update. The ACO Update can only be performed through the on-board USB port of the ACO-based DSP. 4.75a The CONDUCTOR remote control has been implemented DCM - The CONDUCTOR can now be selected as a remote control for all ACO-based DSPs. When selecting the new CONDUCTOR remote control a new configuration page will be displayed. A full documentation of all available adjustments can be found in the CONDUCTOR manual on our website. In addition the CONDUCTOR configuration can be saved as an individual file called ".afcc" to reload the configuration after a system update or to transfer the adjustments from one DSP to another. The CONDUCTOR's firmware will always be kept up-to-date through the DSP PC-Tool software - no additional update tool is required. DCM - Starting with this DSP PC-Tool version several device specific configurations in the DCM menu like the adjustments in the ACO Feature tab will now be stored in the afpx file. After loading these afpx-files a prompt will request if you would like to load these additional configurations (Remote Control and/or ACO features) or if you would like to proceed with the default import (only sound tuning information). Several minor text and label adjustments Several minor bug fixes Please note: An ACO firmware update is required for this DSP PC-Tool update and will be started after connecting to the DSP. Make sure to save all Sound Setups in advance on your hard disk. All DSP adjustments and configurations will be reset during the update process and need to be reloaded after the update. The ACO Update can only be performed through the on-board USB port of the ACO-based DSP. 4.73b HELIX M FOUR DSP - ADEP Load Simulation configuration has been optimized HELIX M FOUR DSP - Default Input Gain adjustment has been set to 10 VRMS for Highlevel and 2 VRMS for Lowlevel signals HELIX M FOUR DSP - Input gain adjustment steps have been extended 4.73a HELIX M FOUR DSP has been implemented Main - When creating a new sound setup for a device with Virtual Channel Processing, a message box will appear which prompts to choose the desired processing mode IO with VCP-devices - A new label called (SubRRC) has been added behind the name of the output channels to better indicate which channels are currently assigned to be controlled through a subwoofer remote control. In addition a message box will show up, if a channel is configured as a subwoofer but due to the Virtual Channel Routing not capable to be controlled by a subwoofer remote control DCM - A new function called Bridge-Mode has been implemented to further assist the user when bridging amplifier channels of the M FOUR DSP. When activating the Bridge-Mode for an amplifier channel pair the second channel gets deactivated in all configuration screens and all data is automatically linked to the second channel to ensure that both channels are always configured identical. HELIX P SIX DSP MK2 - The digital clipping detection of the optical output of a HEC BT or HEC AUX IN module has been deactivated to optimize the digital signal chain to connected amplifiers with SPDIF input. Several minor text and label adjustments Several minor bug fixes 4.72a ATM - This software version contains the first official release of our proprietary "Automatic Time Measurement" function. Since the first beta test version, the ATM has been continuously improved and enhanced to ensure its operability on most of all applications. The ATM offers now the option to select different input sources (e.g. Digital Input or Extension Card input) for non-VCP devices to enable a measurement through all possible inputs of the DSP. In addition a result page has been added after the measurement process which allows the comparison of the time alignment adjustment 'before' and 'after' the ATM process. The result page will also offer detailed guidance and assistance if a measurement failed. The whole menu has also been updated by several explanations and the ATM function can now be directly started in the Time window DCM - A new function called "Device Monitor" has been added. The device monitor is available for all ACO platform enabled products and shows live temperature data within an adjustable time frame as a graph and min/max values. For some specific DSP amplifiers (needs to be equipped with a "Regulated Power Supply" & the "ACO platform" - currently HELIX V EIGHT DSP, HELIX V TWELVE DSP, MATCH M 5DSP MK2) an input voltage monitor is also available which allows to check the stability of the input voltage especially during operation.



DCM - Remote control functions have been renamed for some devices to have the same naming on all functions through all different DSP products DCM / Signal management - A bug in the global main signal detection has been fixed as this function could not be activated in some cases RTA - Several minor issues have been fixed DIRECTOR - In general - Arrow key control through the keyboard in combination with 0.1 dB steps for the EQ resolution has been optimized Several minor bug fixes 4.70a The DSP PC-Tool launcher has been added - the start window now offers a device info area as well as a new menu bar which gives access to several frequently used functions. The new buttons are offering the following functions (from top to bottom): Refresh connection, Options menu (manual ACO Update, manual driver installation, etc.), Connection switch (WIFI/USB), Change-Log history, keyboard shortcuts map, sound files for the integrated measurement systems, website link Main - Advanced Import function has been implemented to import AFPX and REW files. The Advanced Import manager offers various adjustments as well as visualizes the importing data. By selecting the file type you can choose to import REW (.txt) or DSP PC-Tool tuning files (.afpx) Main - The Output level graph has been reworked and now shows the outgoing level as RMS and Peak Hold value. The light blue bar will show the RMS value whereas the dark blue bar will show the Peak Hold value. The new Peak Hold value will show the highest output level within a 2 second time window. This will make it much easier to adjust the gain structure properly as it allows to get easier to the maximum unclipped output level.

In addition the digit value beside the bar can be toggled between RMS and Peak Hold value by clicking on the right in the digit display. Main - The ACO configuration will now also be stored directly when the SAVE button has been used. After daving the unit can be directly disconnected from power and an additional power cycle is not needed anymore. ISA - The Input Signal Analyzer got a new measurement option to measure low frequency high pass filters from factory sound systems between 25 Hz and 200 Hz. The new measurement range can be selected via the drop down menu in the ISA window and is called "Low - 25 Hz to 200 Hz". ATM - The official public beta version of "Automatic Time Measurement" has been added. This is a completely new algorithm and function which allows the user to fully automatically set up the time alignment in a car for all speaker channels independent if these are active or passive speaker systems. The new function can be accessed by pressing "SHIFT" + "I" in any window. To use the function name ALL inputs and outputs correctly, make sure that a fullrange stereo signal is routed to analog input channels "A & B" or in case of VCP to Virtual Channels "Front Left" and "Front Right" and play the ATM test track from the SoundFiles folder. The microphone needs to be mounted in a fixed position at the centered head position e.g. mounting the mic to the headrest facing upwards or in a 45° angle to the inner roof. At last make sure that the measurement volume is in the green/good marked area of the microphone level bar and click on the "Start" button. If necessary it is possible to select/unselect specific channels in the table of the new window. BRAX DSP DiSAC

