



WHICH SERVICE FITS MY NEEDS?



OTX LOGISTICS CANADA LTD.

Our sales team will tailor a service plan for every shipment. We always ask: Where? When? and Size? Let's start!

Where?

CANADA + USA

GLOBAL



TRUCK SERVICE

Trucking can be arranged across Canada or/and cross borders between Canada and the USA.

When?



SOON

LATER



AIR SERVICE

AIR typically takes max. of **2 weeks** total from booking to receiving your cargo.

OCEAN SERVICE



DIVERTED

FLIGHT PLAN WITH STOPS

DIRECT

NONSTOP FLIGHT

SIZE?

FCL

HAVE YOUR OWN CONTAINER (REC: 45+ CBM)

LCL

HAVE A SPOT IN A SHARED CONTAINER AT LOWER COST

Now that you're generally familiar, let us handle the paperwork & details on your behalf. E-mail us at sales@otxcanada.com for a quote today!

OTX LOGISTICS CANADA LTD.



OTX LOGISTICS CANADA LTD.

AIR SERVICE

FLOW OF AIR IMPORT & OUR SERVICES



QUOTATION + BOOKING

E-mail sales@otxcanada.com with details:
Shipper + Consignee contacts, Origin + Destination, Commercial Documents, desired schedule, Content, Weight, Volume, # of PKG

We offer both **direct** and **diverted** services with numerous airlines globally to meet your transit time requirement.



NOTIFICATIONS

We'll send you tracking notifications:
A **Pre-Alert E-mail** to let you know when the airplane your shipment is in takes off.



PAPERWORK + CUSTOMS

An **Air Waybill** will be generated and an **E-manifest** will be submitted by us to Canada Customs for your shipment.

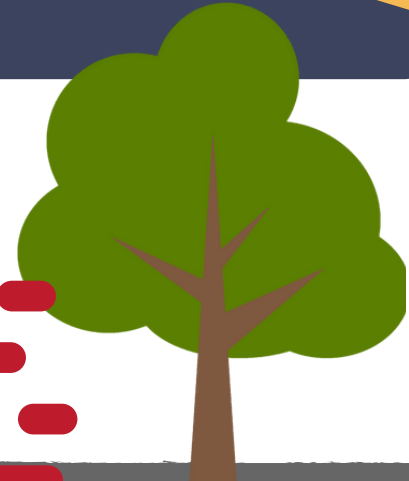


DELIVERY BY TRUCK

An **arranged trucker** will pick up and deliver your shipment at the scheduled time window & address we have confirmed with you.



OTX LOGISTICS CANADA LTD.



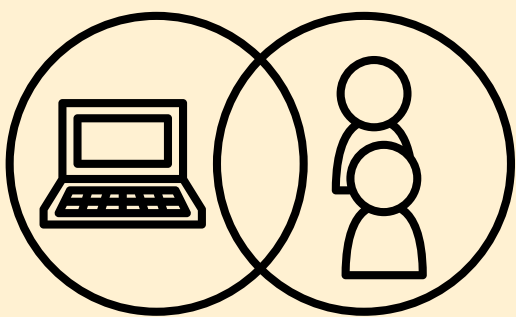
FCL SERVICES

Let's go over the flow of FCL shipping
& what we can provide for you



OTX LOGISTICS CANADA LTD

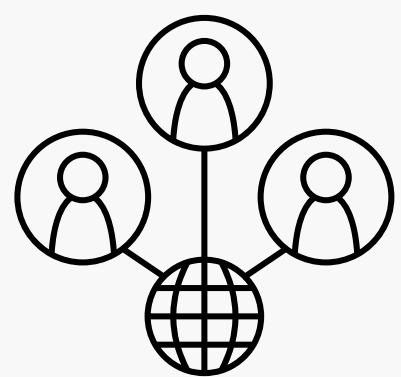
BOOKING



E-mail us at sales@otxcanada.com with the details of your shipment: Destination, Desired Schedule, Shipper Contact Information, Commercial Documents, Content, Weight, Volume, # of PKGS.

CONNECTING YOU

We'll check with our global network for **competitive rates** with the major ocean carriers and Canadian Logistics (Rail/Truck) for a custom quote .



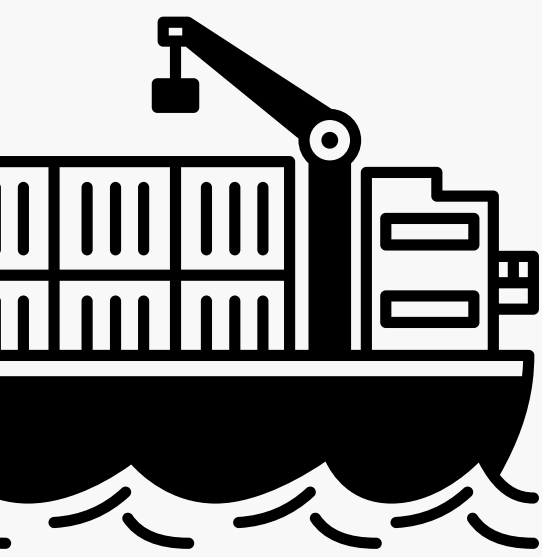
DOCUMENTS

Bill of Ladings will be generated for your shipment & an **E-manifest** will be submitted by us to Canadian Customs



SEA TRACKING

- You'll get a **Pre-alert e-mail** when the vessel sets sail from Origin port.
- Our operations team will track with Carriers & update ETA dates in our **Online Tracking System**
- **Vessel delay e-mails** will be sent to you when we see delays of **+5 days**



RAIL TRACKING

If your shipment requires travel across Canada:

- An **Arrival Notice (A/N)** e-mail will be sent to you and your Broker when an ETA has been set by the railroad services.



TRUCKING

After the shipment has cleared customs , we will **arrange a trucker** to pick & drop off at your scheduled location and time window.

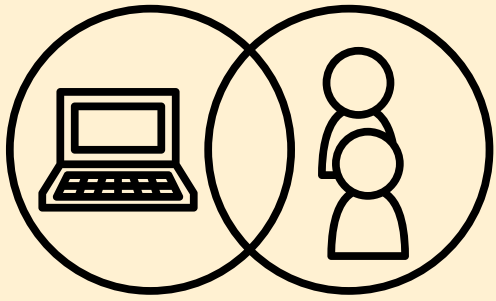
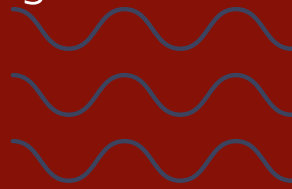




LCL SERVICES

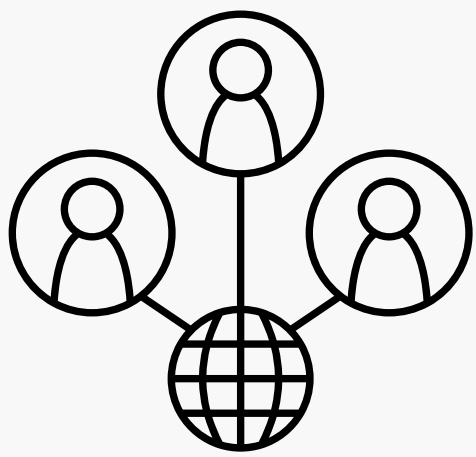
Let's go over the flow of LCL shipping & what we can provide for you

● ● ●
OTX LOGISTICS CANADA LTD



BOOKING

E-mail us at sales@otxcanada.com with the details of your shipment: Shipper + Consignee contacts, Origin + Destination, Commercial Documents, desired schedule, Content, Weight, Volume, # of PKG

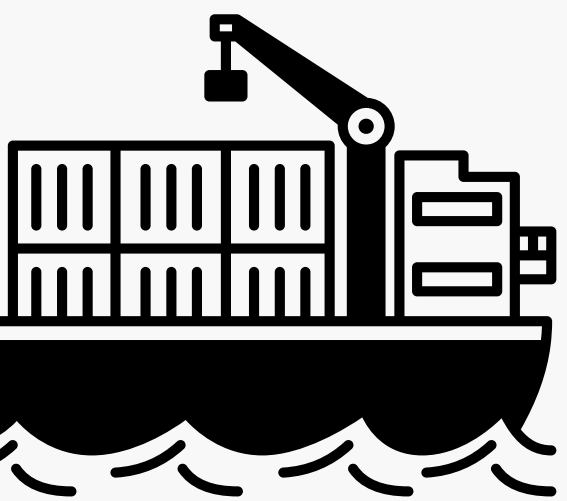


QUOTATION

We'll check with our global network for a container to **consolidate** your shipment in at a **competitive rate** with major carrier lines and Canadian Logistics (Rail/Warehouse/Truck) for a custom quote every time.

DOCUMENTS

Bill of Ladings will be generated for your shipment & an **E-manifest** will be submitted by us to Canadian Customs



SEA TRACKING

- You'll get a **Pre-alert e-mail** when the vessel sets sail
- Our operations team will track & update ETA dates in our **Online Tracking System**
- **Vessel delay e-mails** will be sent to you when we see delays of **+5 days**

RAIL TRACKING

If your shipment requires travel across Canada:

- An **Arrival Notice (A/N)** e-mail will be sent to you and your Broker when an ETA has been set by the railroad services.



BONDED WAREHOUSE

The consolidated container your shipment is inside will be **assigned** to a Bonded Warehouse, a legal space under the supervision of Canada Customs, where the container can be opened and the shipments are de-consolidated or separated.

TRUCKING

After the shipment has cleared customs, we will **arrange a trucker** to pick & drop off at your scheduled location and time window.

