



Charlotte Harbor Yacht Club Regatta

CanAm Regatta Series# 3

February 15 & 16, 2025

SAILING INSTRUCTIONS

1. RULES

- 1.1. This regatta will be governed by the "Rules" as defined in the current Racing Rules of Sailing and by the One Design Rules of Harbor 20 Fleet 6 and 2.4mR Rules and the West Florida Performance Handicap Racing Fleet (WFPHRF).

2. NOTICES TO COMPETITORS

- 2.1. Notices to competitors will be posted on the Official Notice Board at the Charlotte Harbor Yacht Club Deck and on the website: <https://charlotteharboryc.com/boating> under "Select a Regatta", "CHYC Regatta Information" and also as a convenience.

2.2 These SI's will also apply to the CanAm #3 Mid Winters for the 2.4mRs

3. CHANGES TO SAILING INSTRUCTIONS

- 3.1. Changes to the Sailing Instructions will be posted on the Official Notice Board before 0800 hours the day they will take effect.
- 3.2. Changes in the schedule of races will be posted on the Official Notice Board before 2000 hours on the day before they will take effect.

4. RACING SCHEDULE

4.1 Circle 1 Harbor 20, 2.4mR

| | | | | |
|-----------------|---------------|-----------------------|------------------------|-------------------------|
| Friday | Feb 14 | 1800 | Skipper Meeting | Harbor 20 - PHRF |
| Saturday | Feb 15 | 0930 | Skipper Meeting | 2.4mR |
| Saturday | Feb 15 | 1100 | First warning | Harbor 20s & 2.4mRs |
| Sunday | Feb 16 | 1030 | First warning | 2.4mRs only |
| Sunday | Feb 16 | No warning after 1530 | | |

4.2 Circle 2 PHRF Division

| | | | |
|---|--------|-----------------------|---------------|
| Saturday | Feb 15 | 1100 | First warning |
| Sunday | Feb 16 | 1100 | First warning |
| Long Distance Race includes Harbor 20s | | | |
| Sunday | Feb 16 | No Warning after 1430 | |

4.3 Number of Races

- 4.3.1** Harbor 20 Class racing one (1) day (Saturday): Four (4) races are planned.
- 4.3.2** 2.4mR Class racing two (2) days: Six (6) races are planned. Three races per day are planned, 1 additional race may be run on each day
- 4.3.3** PHRF Division racing two (2) days: Four (4) races are planned.
Harbor 20 Class will participate in the Long Distance Race on Sunday but the scores will not count towards the CHYC Regatta finish places

4.3.4 One race constitutes a regatta.

- 4.4. The warning signal for the succeeding races will be made as soon as practical. To alert boats that another sequence will begin soon, an "attention signal" will be given approximately one minute before the warning signal. The attention signal consists of several rapid sound signals. Failure of a boat to hear the attention signal will not be grounds for granting redress.

5. NOT USED

6. SAFETY

- 6.1. Each boat, other than the 2.4mR One Design Class, shall carry no less than two persons aboard when racing. The 2.4mR One Design Class shall wear personal flotation devices, PFDs, that are approved by the governing agency of their respective country.
- 6.2. The Race Committee will not start a race when, in its judgment, and sustained winds that exceed 15 knots or wind gusts over 21 knots for Harbor 20s/PHRF and the minimum sustained winds of 3.5 knots or exceeds 18 knots or wind gust of 22-26 knots for 2.4mRs.

NOTE: The decision to start a race or to continue racing rests solely with the individual skipper.

- 6.3. Each boat must have on board a VHF radio capable of receiving and transmitting on channels 16, 68, and 71.
- 6.4. The Race Committee will monitor VHF channel 71 on Circle 1 and VHF channel 68 on Circle 2 for rescue and emergency purposes and may make announcements as a courtesy.

7. FLEET WARNING FLAGS

- 7.1. The PHRF division warning flag will be a **yellow flag or as specified at the Competitors Meeting.**
- 7.2. The One Design division's warning flag will be their **Class logo on white background.**

8. IDENTIFICATION

- 8.1. All boats racing must have large legible identification numbers displayed on their main sail.
- 8.2. Prior to the first start of each day, each participant shall approach the Race Committee (Signal) boat on **starboard tack** with mainsail hoisted, showing boat number and give boat's name, sail number and number of people aboard, and receive acknowledgment from the Race Committee.

9. RACING AREA

- 9.1. The racing area will be Peace River / Charlotte Harbor. The general racing area is shown on Attachment 1. The position of the starting line is dependent on the wind direction. The Race Committee will announce the location of the starting line on VHF radio approximately 30 minutes before the first race of the day.
- 9.2. The racing area for the Sunday Distance Race is shown on Attachment 4.

10. RACE COURSES

- 10.1 Race courses will be selected from the choices shown on Attachment 2 and 3 of these Sailing Instructions.
- 10.2 At the discretion of the Race Committee, different race courses may be displayed for the different divisions. When so described, the division's name will be included with the race course identification.

- 10.3 The race course to be sailed will be displayed on the stern or side of the Race Committee (Signal) Boat prior to the warning signal for each fleet.
- 10.4 The starting or finishing lines are open to racers on legs of the course that are not considered in the process of starting or finishing.
- 10.5 The Sunday Long Distance Race course will be selected from the choices shown on Attachment 4 and 5 of these Sailing Instructions.

11. MARK DESCRIPTIONS

- 11.1 For the One Design fleets on **Circle One**, Mark 1 shall be a **YELLOW** inflatable. Mark 1a (offset) shall be a **ORANGE** inflatable. Gate 2S/2P shall be **RED** inflatable(s). See Attachment 3.
- 11.2 A change mark will be a **RED** inflatable. If a new mark is subsequently changed, it will be replaced with an original mark. If the windward mark (1) is moved, there will be no offset mark (1a).
- 11.3 For the PHRF fleet on **Circle Two**, marks shall be posted on the stern or side of the Signal Boat. These may include both inflatable and government marks. See Attachment 2 and 4.

12. STARTING AND FINISHING LINES

- 12.1 The starting line for **Circle One** races will be between a staff displaying an orange flag on the Race Committee (Signal) Boat on the starboard end of the line and an **ORANGE** inflatable buoy at the port end of the line.
- 12.2 The finishing line for **Circle One** races will be between a staff displaying a blue flag on the starboard side of the Race Committee (Signal) Boat and a nearby **WHITE** inflatable.
- 12.3 The starting and finishing line for **Circle Two** races on Saturday will be between a staff displaying an orange flag on the Race Committee (Signal) Boat on the starboard end of the line and an inflatable buoy or Government Mark at the port end of the line.
- 12.4 The starting and finishing line for Sunday's long distance race will be between the race Committee (Signal) Boat and Government Marker #2.
- 12.5 The Race Committee may tether a buoy to the stern of the Race Committee signal boat.
- 12.6 A boat that touches the Race Committee signal boat and causes damage shall retire from that race. A boat that touches the Race Committee signal boat and does not cause damage shall, as soon as possible, perform a 720-degree turn. This changes Rule 44.1(b). A tethered buoy shall be considered an ordinary mark for this purpose, with the penalty for touching as published in Rules 44.1 & 44.2.

13. STARTING SEQUENCE AND SIGNALS

- 13.1 Races shall be started in accordance with Rule 26.
- 13.2 The planned order of fleet starts for Saturday on Circle 1 will be Harbor 20s and then 2.4mR. The planned order of fleet starts for Circle 2 on Sunday will be described at the Competitors' meeting and will be posted on the Official Notice Board.
- 13.3 A series of sound signals may be made about one minute prior to the warning signal of the starting sequence for the first fleet. If a postpone flag is displayed before the start sequence, the postpone removal signal, multiple sounds will be given one minute prior to the Warning signal. This changes Race Signals for AP and General Recall signals 29.2
- 13.4 A boat starting later than five (5) minutes after its starting signal will be scored DNS by the Race Committee, without further hearing. This changes Rules 35, A4.1, and A5.
- 13.5 Boats whose warning signal has not been made shall keep clear of the starting area and of all boats whose warning signal has been made. The Starting Area will extend 200 feet perpendicularly (to windward & leeward) from the starting line and 200 feet radially from its ends. Boats that fail to abide by these restrictions may be subject to protest by the Race Committee only.

14. INDIVIDUAL RECALL

- 14.1** The Race Committee may attempt to notify the boat or boats being recalled by hailing or broadcasting the sail number and/or name. Failure of the Race Committee to verbally notify a boat or of a boat to see or hear recall notification or the timing and order of such hail will not be grounds for granting redress.

15. TIME LIMIT

- 15.1** The time limit for the first boat to finish the Saturday races (and Sunday races for the 2.4mR fleet) will be 60 minutes for the One Design fleets and 90 minutes for the PHRF fleet.
- 15.2** Boats failing to finish within 20 minutes after the first boat in their fleet finishes will be scored Time Limit Expired (TLE) and will receive two points more than the last boat to finish within this time limit. This changes Rules 35 and A4.1.
- 15.3** The Long Distance racing will be abandoned on Sunday at 1430 hrs. Boats failing to finish within the time limit will be scored TLE and will receive two points more than the last boat in their fleet to finish.

16. BOAT WITHDRAWAL

Any boat withdrawing from a race shall notify the Race Committee and shall continue to attempt to notify the Race Committee until receiving acknowledgment.

17. NOT USED

18. PROTESTS AND REQUEST FOR REDRESS

- 18.1** At the finish of the race or after withdrawal from the race, a boat lodging a protest shall inform the Race Committee of the name and sail number of the boat being protested and/or the skipper of the boat being protested.
- 18.2** Protest Time Limits: Within one hour after the Signal Boat official docking time Saturday and Sunday, the protesting boat shall deliver a written protest either directly or via e-mail to the Regatta Chair or his/her designee.
- 18.3** The Regatta Chairman or his/her designee, Hank Killion, can be reached at either s.killion@comcast.net or at 508 277-6834 or at the Charlotte Harbor Yacht Club on Sunday.
- 18.4** Protest notices will be posted on the Official Notice Board as soon as possible after the Protest Time Limit. This will include the competitors involved, where and when there will be a hearing to which they are a party. An attempt will be made to contact skippers involved in a protest by cell phone. However, failure to be contacted is not grounds for redress.
- 18.5** It is each boat's sole responsibility to check the Protest Notices at the end of the protest filing time to see if they are cited in a protest.

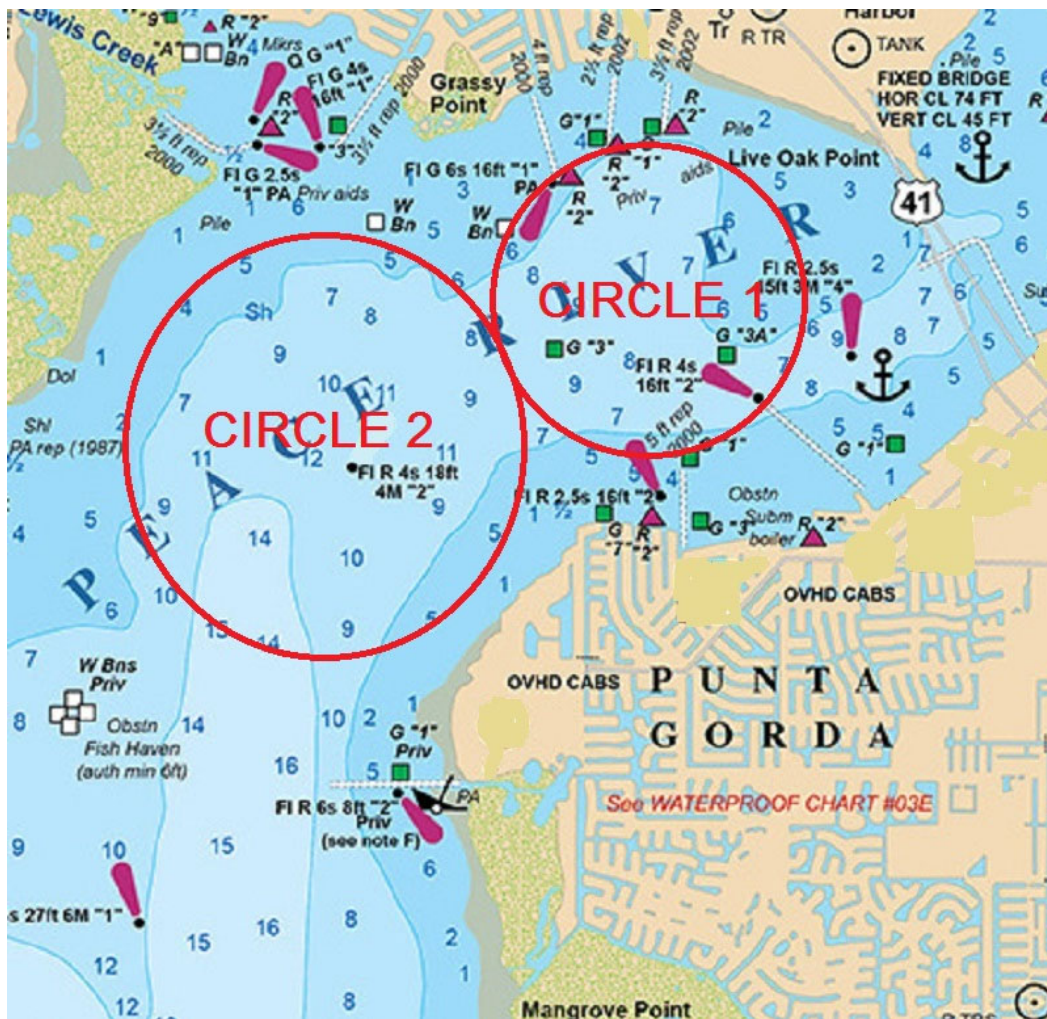
19. SCORING

- 19.1 The Low Point Scoring System of Appendix A of the Racing Rules of Sailing will apply. For the Harbor 20 and PHRF division, Rule A2 is modified so that each boat's series score will be the total of all its race scores, without exclusion. For the 2.4mR Class, Rule A2 is modified so that if six (6) races are completed the worse score shall be excluded.
- 19.2 PHRF division: The WFPHRF RLC rating will be used for scoring the PHRF fleet courses on Saturday and Sunday. Time-on-Distance handicapping will be used in scoring all races.
- 19.3 Harbor 20 One Design division: Final standings for the Harbor 20 division will include just the results of races held on Saturday. Harbor 20 boats may choose to **enter the long-distance** race on Sunday and will be assigned a temporary PHRF rating of – **249 sec/mi. for non-spinnaker or - 222 sec/mi for spinnaker.**
- 19.4 One completed race shall constitute a regatta.
- 19.5 The 2.4mR Class results will be applied to the CanAm #3 and overall CanAm Series scoring.

20. AWARDS

- 20.1 Awards shall be presented to the top finishers in the Harbor 20s and PHRF division based upon lowest point total for the regatta (Saturday and Sunday races). Harbor 20 division will include just the results of races held on Saturday.
- 20.2 The Charlotte Harbor Yacht Club perpetual award will be made to the boat finishing first in the Sunday Distance Race.
- 20.3 **The CanAm # 3 Awards will also be presented for the top finishers for the 2.4mR**
- 20.3 Awards will be presented at the CHYC. (Scheduled approximately 1600.)

Sailing Instructions - Attachment 1



Circle locations are approximate, and this chart is intended for reference use only, not navigation.

ATTACHMENT 2 - COURSES FOR PHRF FLEETS

Charlotte Harbor Markers

Headings and distances between marks

Distance (Nautical Miles) & Heading (Magnetic 2008)

| From Mark | To Mark | | | | | | | | |
|-----------|---------------|--------------|--------------|---------------|---------------|--------------|---------------|---------------|--------------|
| | 1 | 2 | 3 | 3A | 4 | A | B | T | 7 |
| 1 | | 2.14 030° | 2.97 040° | Not Used | Not Used | 2.92 023° | 0.95 342° | 3.91* 045° | 1.27 279° |
| 2 | 2.14 210° | | 0.93 063° | 1.59 079° | 2.11 082° | 0.89 359° | 1.68 235° | 1.92 061° | 2.86 235° |
| 3 | 2.97 220° | 0.93 243° | | 0.74 97° | 1.26 096° | 1.01 300° | 2.60 238° | 0.98 057° | 3.78 237° |
| 3A | Not Used | 1.59 259° | 0.74 277° | | 0.52 094° | 1.76 291° | 3.20* 247° | 0.64 008° | 4.37 244° |
| 4 | Not Used | 2.11 262° | 1.26 276° | 0.52 274° | | 2.24 288° | 3.68* 250° | 0.81* 328° | Not Used |
| A | 2.92 203° | 0.89 179° | 1.01 120° | 1.76 111° | 2.24 108° | | 2.25 218° | Not Used | 3.40 225° |
| B | 0.95 162° | 1.68 055° | 2.60 058° | 3.20* 067° | 3.68 070° | 2.25 038° | | 3.57 058° | 1.18 234° |
| T | 3.91* 225° | 1.92 237° | 0.98 237° | 0.64 188° | 0.81* 148° | Not Used | 3.57 238° | | 4.76 238° |
| 7 | 1.27 99° | 2.86 055° | 3.78 057° | 4.37 064° | Not Used | 3.40 045° | 1.18 054° | 4.76 057° | |

Markers A & T are yellow floating cans.

Marker B represents the four fishing reef markers. All four marks must be rounded. No short cuts. Distances are to the NW corner.

*These legs should not be used during low water conditions.

Distances and headings updated for relocation of marks A and T.

Revised August 2015.

Attachment 3 Circle 1

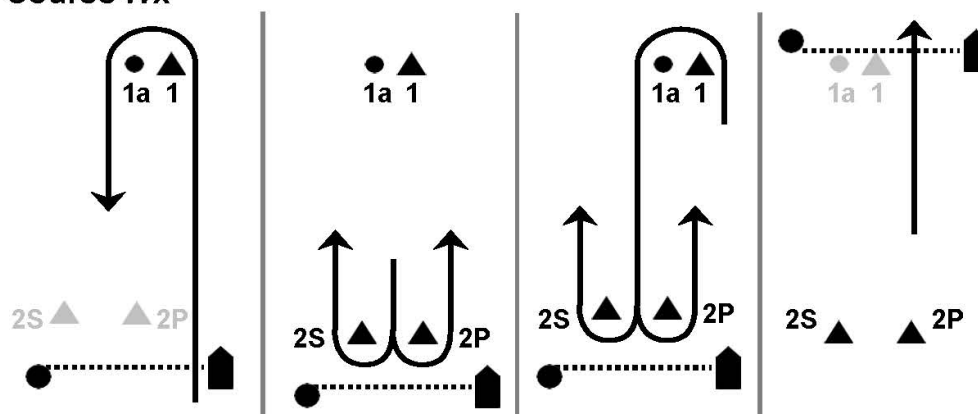
Courses

Offset Mark (1a) used in conjunction with **Mark 1** will be placed at approximately a right angle to the first leg of the course and approximately 150 feet away from **Mark 1**.

New Mark: A new windward mark defining a change of course will be a RED cone in its new position and no off set will be needed with a change mark.

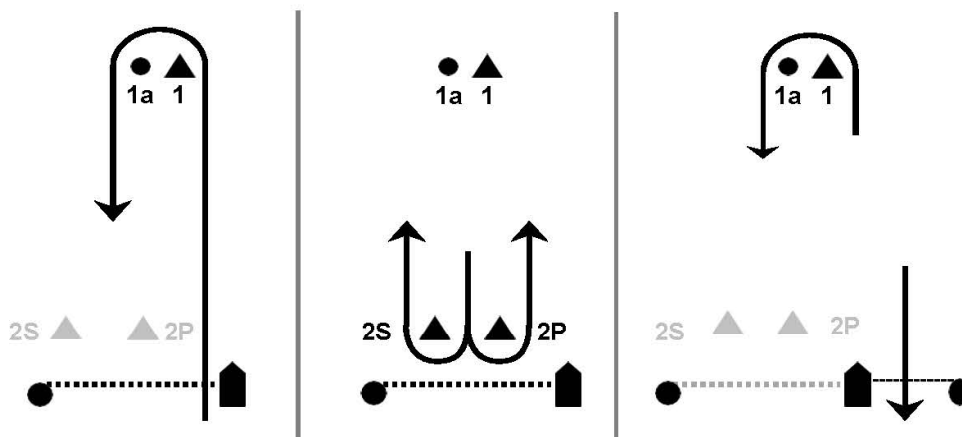
Gate 2S/2P shown in each course may be substituted by a single **Mark 2**, without signaling. **Mark 2** must be left to **Port** when rounding.

1. Course Wx



W5 Course — Start — 1 — 1a — 2S/2P — 1 — 1a — 2S/2P — Finish Windward
Five (5) Legs (Illustrated)

2. Course Lx



L4 Course — Start — 1 — 1a — 2S/2P — 1 — 1a — Finish Leeward — Four (4) Legs (Illustrated)

ATTACHMENT 4

REVERSE HANDICAP RACE COURSE (Sunday's Long Distance Race)

Courses:

A: Start – 4(p) – 2(p) – 1(p) – Finish 8.50 NM

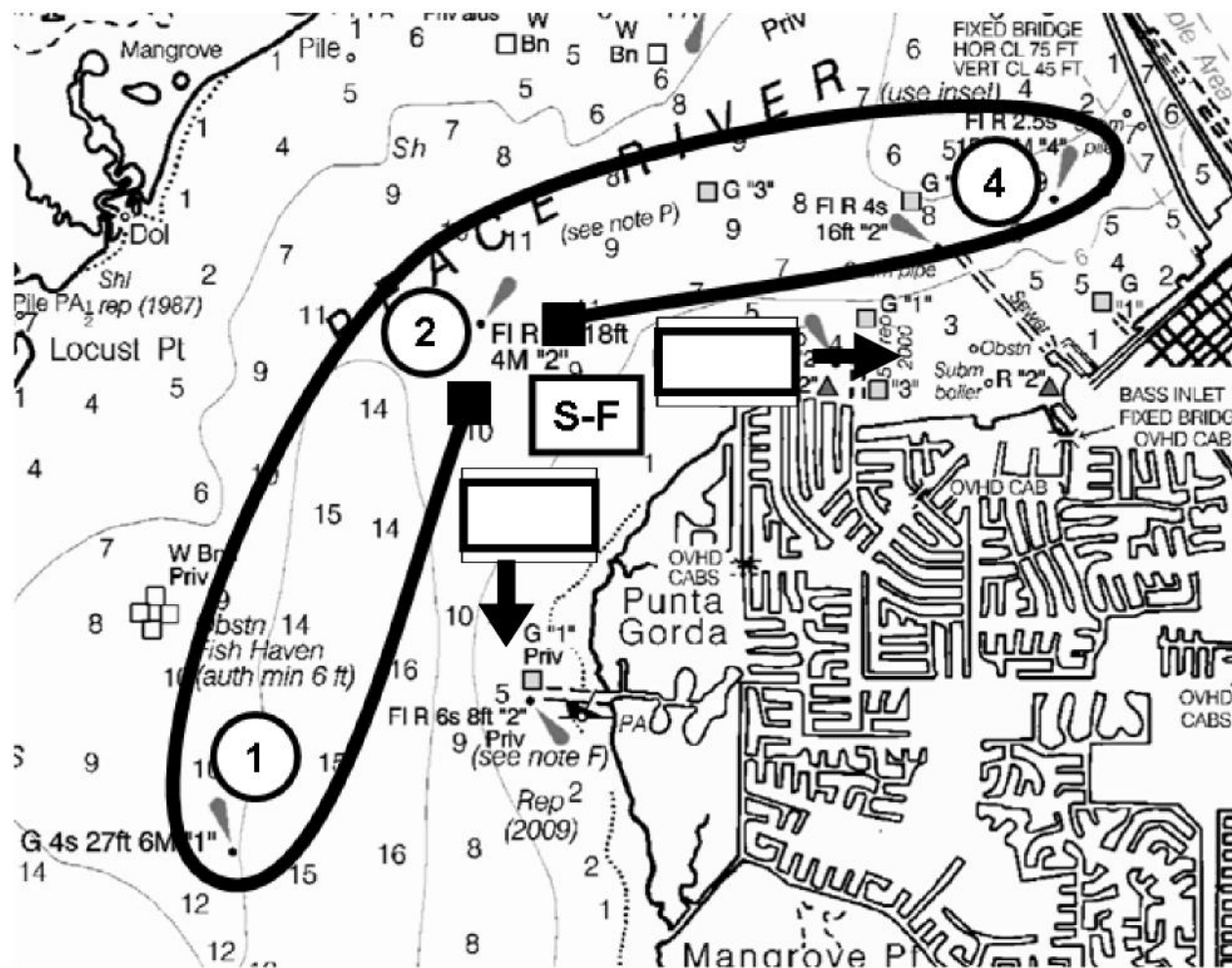
B: Start – 1(s) – 2(s) – 4(s) – Finish 8.50 NM

C: Start – 4(p) – Finish 4.22 NM

D: Start – 1(p) – Finish 4.28 NM

Note:(p) leave mark to port, (s) leave mark to Starboard

Diagram is only a sketch for general orientation. Course marks and rounding requirements are given for the long Courses A or B.



ATTACHMENT 5

Special instructions for Reverse Start Sunday, February 16th, 11:35 first boat starts

This race is sailed as a pursuit race on one of the courses described and illustrated on Attachment 4. The Race Committee (Signal) Boat shall post the designated course (A, B, C or D) prior to the warning signal Sunday. The Race Committee may also announce the course on VHF channel 68 as a courtesy only. Failure to hear the announcement is not grounds for redress.

Each boat's delayed start time for each of the four courses described on Attachment 4 will be listed on the scratch sheets that will be included in the skipper's racing package. Any late registrations shall receive their delay time no later than 0800 hours on the day of the race and it will be posted on the official Notice Board. Late registrants will receive a delayed start time no earlier than the first start time listed on the scratch sheet.

Each individual "delayed start time" is based upon the selected course length and WFPHRF RLC rating. Boats with very low or very high PHRF ratings may be starting respectively earlier or later than their calculated delay time in order to expedite the race time. These boat's finish times will be adjusted accordingly. The Committee Boat may informally transmit information on VHF Ch.68.

The start sequence shall follow rule 26. For this race the warning signal/class flag for the combined fleet start sequence will be white. The boat(s) with zero delay time will be the "scratch" boat(s) and will start first at the lowering of the white class flag. All other boats shall start as their specified delayed time, as shown on the scratch sheet, has elapsed. Boats awaiting the approach of their delayed start time shall keep clear of the starting area.

The start and finish line for this race is between a staff displaying an orange flag on the committee boat and Government marker 2 on the opposite end of the line. See Attachment 4 for course descriptions and an illustration.