



Premiere Collection

*a Legno Bastone Wide Plank Flooring
Designers Workroom*



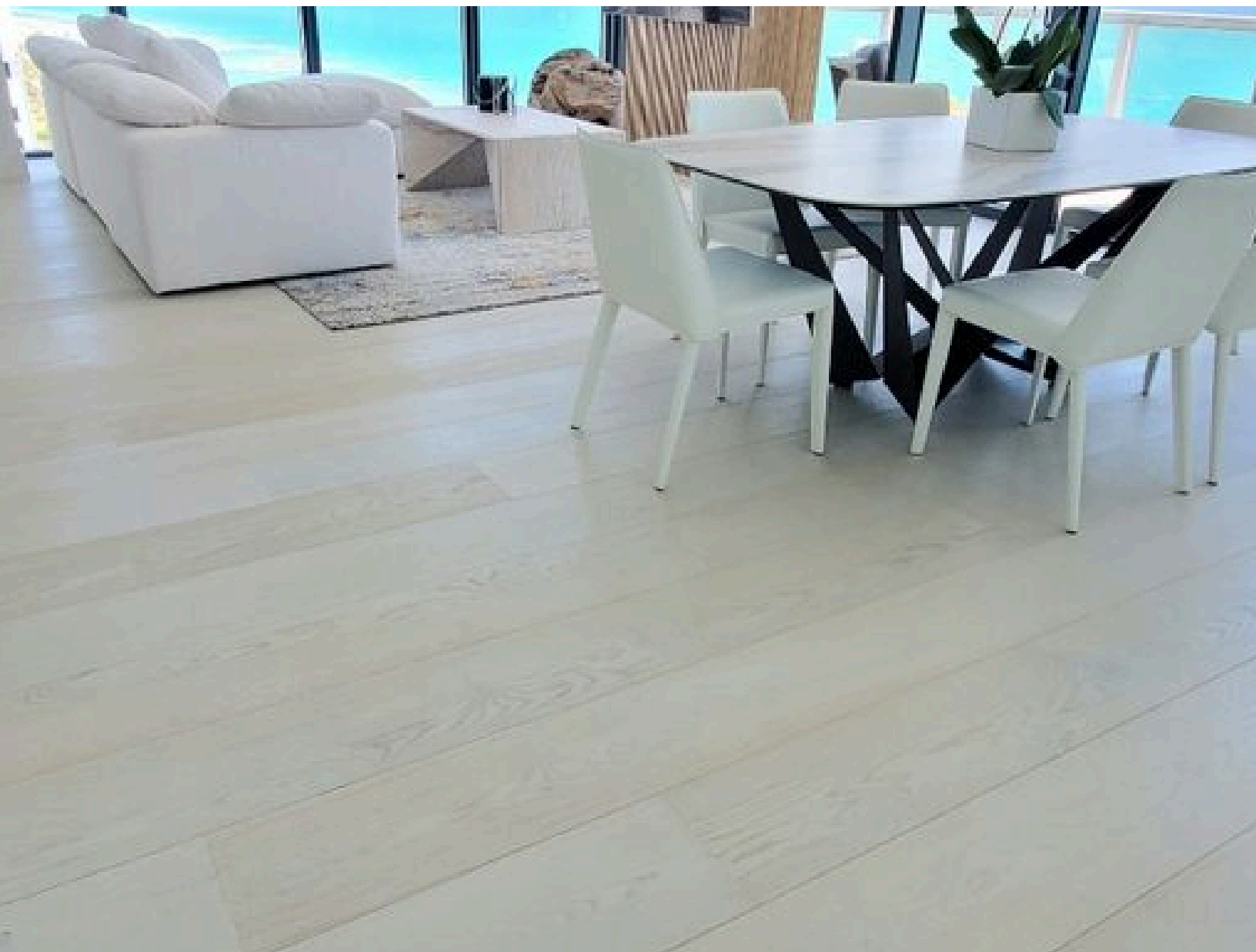
Vino

*Brunello, Chianti,
Gavi, Pinot Grigio,
Prosecco, Soave*



La Famiglia

*Antonietta, Arturo, Domenico,
Elisa, Ettore, Francesco, Franchino*



*Giginella, Giuseppina, Luigi,
Luigina, Luisa, Maria, Mariella*

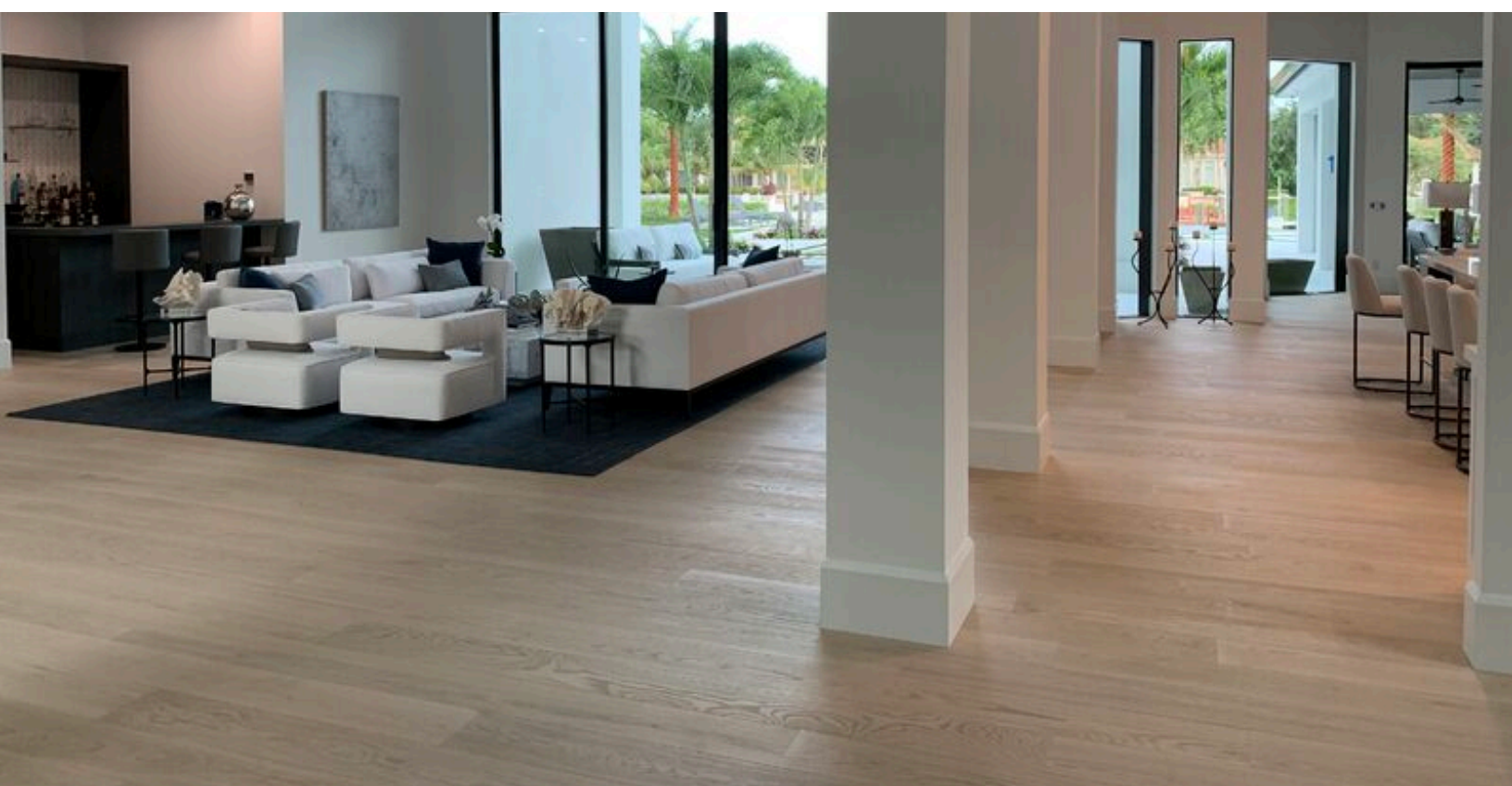


*Pippinella, Regina, Rosanna,
Rosina, Teresa, Turillo, Vincenzo*



220 Series

*Antonietta 220, Domenico 220,
Franchino 220, Giannino 220,
Giginella 220, Giuseppina 220,
Luigi 220, Luigina 220, Luisa 220,
Pippinella 220, Regina 220,
Rosanna 220, Rosina 220*



G₁

*Giginella G₁, Giuseppina 220 G₁,
Rosina 220 G₁*



European Elegance

*Copenhagen, Geneva, Genova, Lagos,
Lancaster, Lisburn, Mykonos,
Napoli, Portofino, Roma,
Santorino, St Moritz, Torino*



European Elegance

Noce, Noce 220



Dolce Vita

*Amantea, Belmonte, Campora,
Coreca, Madrid, Pompeii,
Positano, Sorrento, Soverato,
Taormina, Tropea, Vienna*



Trecento

*Amantea, Amalfi, Belmonte,
Campora, Coreca, Sorrento,
Soverato, Tropea*



Legno Bastone
WIDE PLANK FLOORING.

MASTERBRAND CABINETS

MANTRA MID CONTINENT

- Henri Door Style
- Coastline Stain
- Retreat Paint Finish
- Marcona and Steam Paint Finish
- Base Super Cabinet
- Bathroom Cabinets
- Built-in Storage Niches

Call for a Free Consultation



(941) 799-0683



<https://premiere-collection.com/>



araceli@premiere-collection.com



Loba-Wakol LLC and Osmo USA: Osmo Oil & Wax Products



Premiere Collection

a Legno Bastone Wide Plank Flooring Designer's Workroom

Mission Statement

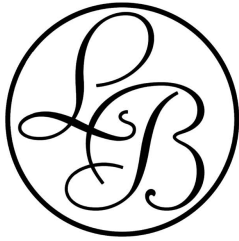
At Premiere Collection, our mission is to bring the timeless elegance of European hardwood floors into homes and businesses. Crafted from century-old white oak trees, our floors embody the beauty and tradition of Legno Bastone Wide Plank Flooring.

We specialize in trade-to-trade services, proudly partnering with architects, interior designers, homebuilders, renovation companies, and installers. As an official distribution dealer for Loba-Wakol LLC and Osmo USA: Osmo Oil & Wax Products, we provide comprehensive solutions to protect, maintain, and enhance the beauty of hardwood floors.

Our goal is to provide these professionals with exceptional flooring solutions, ensuring every project is a masterpiece of craftsmanship and beauty. Our commitment to excellence is evident in our top-notch Client Care Solutions, designed to meet the needs of our high-end clients and partners. We are dedicated to delivering unparalleled quality and sophistication, ensuring every customer experiences the epitome of luxury.

By exceeding expectations, we enrich spaces with the natural beauty and enduring durability of our premier hardwood flooring selections. At Premiere Collection, we strive to make every floor a testament to timeless elegance, exceptional craftsmanship, and lasting protection.

Valued Partners



Legno Bastone

WIDE PLANK FLOORING®

100% MADE IN EUROPE

The wood behind Legno Bastone Wideplank Flooring

Legno Bastone gets raw wood from the best forests in Europe, which have been nurtured for generations for the benefit of society and the environment. The trees we select are generally over 150 years old and have been meticulously cared for throughout their existence. We make precise uncompromising demands regarding grains, knots and structure. We accept only the best logs which we use with the greatest respect possible. Any other approach would be an injustice both to the trees and to all the forest workers who have taken care of them for centuries.



Loba®
On Top!

WAKOL®
Pursuing excellence unites

Wood and Resilient Flooring Industry

Loba and Wakol are leading suppliers for adhesives and finishes within the wood and resilient flooring industry with innovative solutions and systems from the subfloor to the finished floor. Loba-Wakol's connected systems program develops products and solutions with absolute compatibility from start to finish.

ENVIRONMENTALLY FRIENDLY

Osmo offers a natural and environmentally friendly alternative for wood finishing.



The products are based on rapidly renewable, natural vegetable oils that penetrate deeply into the wood, keeping it elastic and healthy, while preventing it from drying and becoming brittle. The wood becomes naturally protected allowing it to breathe and allowing moisture to evaporate while being water resistant. Water tightly beads on the surface, which can then simply be wiped away – and for exterior wood, the rain will evaporate naturally. This means that little or no maintenance is required.