

Why Recycle?

Recycling helps our environment by keeping these items out of the landfills and incinerators, saves more resources for future generations, decreased air and water pollution from abstracting and refining natural resources, and it requires less energy, which produces less carbon dioxide which is the leading cause of manmade climate change.

Residents benefit from single stream recycling by allowing you to mix all your recyclable materials in one container; simplifying the process by not sorting different materials and no longer tying or bundling of paper materials. Help us keep taxes lower for all residents by doing your part while creating a better environment to leave to the next generation.

Bringing Recycling to the Curb

Place all empty, clean and dry recyclable items loose directly in a recycling can at the curb. **Do not put recyclables in a plastic trash or grocery bag.** Breakdown all boxes. Do not place cans in the street. Excess boxes can be flattened and tied with twine.

Q: Does the Township provide refuse and recycling containers? How do I request one?

A: The resident must provide their own refuse container, purchased through any retailer. Recycling cans are available at the Public Works Office in the township building for free if you moved into the township within 6 months, or for all residents for just \$35. Once ordered and paid for, your new can will be delivered to your residence for your convenience. Recycling stickers to place on any can is also available at the township building for no cost! 1014 Darby Road, Havertown PA 19083

Q: Is it OK to place recyclables in a plastic bag for collection inside the blue recycling can?

A: No. Recyclables in single stream recycling need to be loose directly placed in a can. Bundled recyclables can't be sorted properly at the facility, so all of it ends up in a landfill. Recycling in plastic bags, paper bags or cardboard boxes will be placed in trash collection.

Q: Is it OK to place recyclables in a cardboard box and to leave this on the curb next to the blue recycling can?

A: All recycling must be in a blue township can or any similar can with a recycling sticker attached. Recycling in plastic bags or cardboard boxes will be placed in trash collection.

Q: What if I have too much recycling?

A: Excess recycling can be dropped off at Haverford Township Community Recycling Center. The Haverford Township Community Recycling Center is located on Hilltop Road near the intersection of Old West Chester Pike. There you'll find two dumpsters clearly marked; one dumpster marked for both paper and cardboard; and one dumpster for glass, cans and plastics. If the dumpsters are full, please do not leave your materials at the site. Please do not leave any other materials or debris at this location. From West Chester Pike, take Old West Chester Pike and make a left onto Hilltop Road. Then, follow signs for the Recycling Center.

Q: Where can I recycle/dispose of electronics and appliances since they are NOT accepted in either recycling or trash?

A: Haverford Township has 2 E-Waste bins located at 1014 Darby Rd Havertown **OUTSIDE** the township building, in the lower parking lot between WaWa and township building. Haverford Township has 1 E-Waste bin at the Haverford Community Recreational and Environmental Center located at 9000 Parkview Drive **OUTSIDE**, at end of parking lot near baseball field. Please place only these programs/items in appropriate, corresponding, marked bin. Items must fit inside the opening to the bin. Do Not leave items next to the bins! Items larger than the bin can be recycled for free for Haverford residents twice a year during the biannual E-Waste Events. Registration is required and can be found on the township website 30 days prior to the event.

Q: Where can I find out more about the Recycling Beyond the Blue Bin Initiative?

A: The Recycling Beyond the Blue Bin Initiative started in 2021 by the Environmental Advisory Committee. Please email the EAC at Havswitch@gmail.com for more info.

Q: What company does Haverford Township contract with to manage our recycling?

A: Republic Recycling <https://www.republicservices.com/recycling-guide>

Questions

Q: Whom may I contact if I have questions about the township's recycling practices?

Public Works Department

(610)446- 1000, extension 2263 or 2264

1014 Darby Road, Havertown PA 19083

By email: publicworks@havtwp.org

By Haverford Citizen reporter:

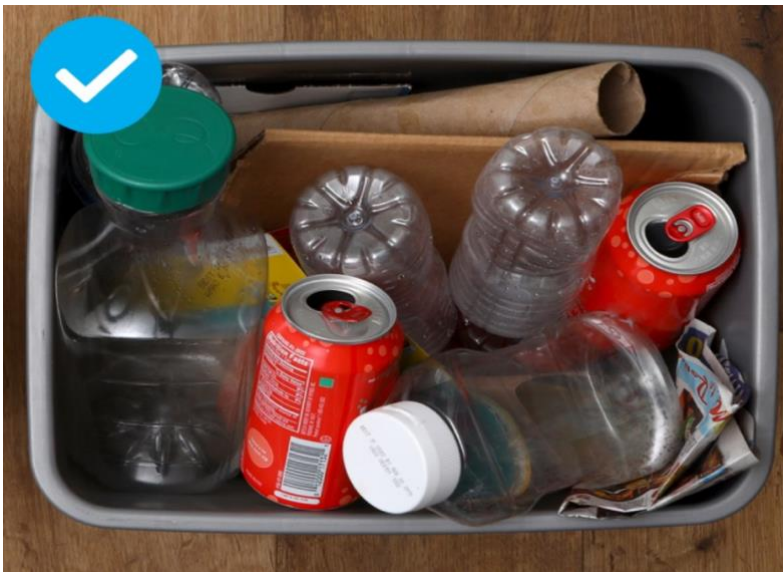
[http://www.havtwp.org/Haverford Township Citizen Reporter.html](http://www.havtwp.org/Haverford_Township_Citizen_Reporter.html)

Republic Services

(610)265-6337 Monday – Friday 7AM to 7PM Saturday 8AM to 1PM

By email: <https://www.republicservices.com/residents>

This is what your recycling should look like:



Specific Recycling Questions & Answers

Kitchen

- **Kitchen Plastic:** Accepted items include: any plastic bottle or container with the recycling symbol #1-7
- **Kitchen Glass:** Accepted items include: any bottles or jars that are clear, green or brown. NO LIDS
- **Kitchen Paper:** Accepted items include: cardboard boxes, cardboard paper towel roll tube, paper grocery bags
- **Kitchen metal:** Accepted items include aluminum, tin, steel and bi-metal beverage and food cans.

All items must be EMPTY, clean, dry and loose directly in a recycling can.

Q: What cleaning procedures are required for any kitchen plastic or glass container.(i.e. plastic milk/juice bottle, or glass bottles/jars)?

A: Discard residual liquid or food, rinse if necessary, and allow to dry. Remember the importance to conserve water, some items that are too difficult to remove all residue it would be better to discard in the trash than use excess water to clean; or try soaking overnight. Place item loose directly in the recycling bin. Do NOT use a trash or plastic bag.

- Compress plastic jug/bottle if able and tightly replace caps. If removed and loose, caps are NOT accepted by themselves in single stream recycling and should be placed in the trash. *Any item smaller than a credit card (like lids) are too small by themselves and get stuck in the machine causing delays and repairs. Please don't place loose caps and lids in the recycling! They are also at risk for popping off under pressure, so it's best to squeeze out extra air before securing cap.
- Select (NOT all) plastic bottles may have a plastic label that must be removed before recycling (see back of container for recycling info)
- Wine bottles: ARE accepted, but the metal lid and cork is NOT (See Recycling Beyond the Blue Bin Initiative)
- No: Metal lids on glass containers are NOT recyclable and should be placed in trash (see Recycling Beyond the Blue Bin Initiative for alternative option to trash)
- Coated paper cartons (ie milk, creamer, orange juice, soup cartons): all ARE NO LONGER accepted, even if they say TetraPak, TetraBrik Aspetic or Purepac. Please place in trash

Q: What cleaning procedures are required for any kitchen aluminum or steel cans? Lids, Tabs and labels on or removed?

A: Rinse residual food out and allow to dry and place loose in recycling can.

- Paper labels CAN be left on. Labels do NOT need to be removed.

- Lids CAN and should stay attached to cans and pushed slightly inside of can for safety. However if lids are completely removed they should be placed in trash as lids are too sharp/hazardous to recycle by themselves. (see Recycling Beyond the Blue Bin Initiative for alternative option to trash).
- Tabs and can be left on, however if they are removed tabs then should be placed in trash as tabs are too small to recycle by themselves. *Any item smaller than a credit card (like lids) are too small by themselves and get stuck in the machine causing delays and repairs. (see Recycling Beyond the Blue Bin Initiative for alternative option to trash).

Q: Are Aluminum/Tin foil and aluminum Trays/Pans/Containers accepted?

A: No, aluminum/tin foil and aluminum serving trays/pans/containers are NOT accepted in single stream recycling. (See Recycling Beyond the Blue Bin Initiative)

Q: What types of food packaging materials are recyclable? Does this include: plastic, boxes, foil potato chip, pretzel, cereal bags, Ziplock bags, and produce/shopping bags from grocery stores?

A:

- Yes: Any plastic container with the recycling symbol 1-7 ARE accepted in single stream recycling.
- Yes: pantry cardboard boxes, cardboard beverage containers and cardboard egg cartons ARE accepted in single stream recycling.
- Yes: frozen cardboard boxes that are NOT coated ARE accepted in single stream recycling
- No: frozen cardboard boxes that ARE coated are NOT recyclable in single stream recycling (plastic coating is to keep box waterproof- you may see condensation on the lining)
- No: Ziplocks, Produce bags, bread bags cereal/cracker plastic bags and plastic grocery bags are NOT recyclable in single stream recycling. (See Recycling Beyond the Blue Bin Initiative)
- No: Chip bags, snack bags, granola bar wrappers and squeeze pouches are NOT recyclable in single stream recycling. (See Recycling Beyond the Blue Bin Initiative)

Q: Are produce clamshells accepted?

A: Yes: Any plastic container with the recycling symbol 1-7 ARE accepted in single stream recycling.

Q: Can I stack plastic containers?

A: Yes you can stack plastic containers IF they are the same plastic recycling number; No you can NOT stack containers with different plastic recycling number.

Q: Are dish gloves recyclable?

A: No, dish gloves are NOT recyclable in single stream recycling.

Q: Are aerosol cans such as oven cleaner and whipped cream accepted?

A: No, all aerosol cans are NOT accepted anymore in single stream recycling, please place in the trash for metal recovery

Q: Are kitchen cleaning products recyclable?

A:

- Any plastic bottle with the recycling symbol 1-7 IS accepted in single stream recycling
- Spray nozzles and squirt pumps are NOT accepted in single stream recycling. They must be removed and placed in trash. (See Recycling Beyond the Blue Bin Initiative)
- Aerosol cleaners are NOT accepted in single stream recycling , please place in trash for metal recovery

Q: What is NOT accepted for recycling?

A: Contaminated cardboard (such as greasy pizza boxes, food covered paper plates and dirty takeout containers), All Styrofoam (egg cartons, meat trays, packaging), Aerosol Cans, Milk/OJ/soup/juiceboxes (ie paper coated cartons), Plastic Coated cardboard (coffee cups, ice cream containers, coated frozen boxes), Mixed recyclable content that can not be separated (pringles cans, foil lined goldfish bags, foil lined coffee containers, breadcrumb paper/foil containers with metal bottom), cookwear, ceramic dishes, glasswear, utensils, silverwear, sponges, windows, paper towels, napkins, plates and tissues. Food is NOT recyclable and must be removed from recyclable materials.

Toiletries, Health & Medical

Accepted items include paper towel and toilet paper rolls, and plastic bottles with recycling symbol #1-7. All items must be empty, clean, dry and loose directly in a recycling can.

Q: Are prescription containers and bottles recyclable?

A:

- YES, prescription pill containers ARE accepted in single stream recycling.
- NO, prescription container lids are NOT recyclable in single stream recycling by themselves and should be left on the bottle or placed in the trash.

- Yes, prescription bottles with a recycling symbol IS recyclable in single stream recycling.

Q : Are soap dispensers recyclable?

A:

- YES, the plastic soap container with a recycling symbol 1-7 IS accepted
- NO, squirt pumps and foaming pumps are NOT accepted in single stream recycling
- Decorative containers made from metal, glass or ceramic are NOT recyclable.

Q: Are bathroom cleaning products recyclable?

A:

- YES, Any plastic bottle with the recycling symbol 1-7 IS accepted in single stream recycling
- NO, Spray nozzles and squirt pumps are NOT accepted in single stream recycling (See Recycling Beyond the Blue Bin Initiative)
- NO, Metal aerosol cans are NOT accepted in single stream recycling (See Recycling Beyond the Blue Bin Initiative)

Q: Are make up items recyclable?

A: No, make up items are NOT recyclable in single stream recycling. (See Recycling Beyond the Blue Bin Initiative)

Q: Are deodorant containers recyclable?

A: NO, both plastic and aerosol deodorants are NOT accepted in single stream recycling. (See Recycling Beyond the Blue Bin Initiative)

Q: Are eye drop bottles recyclable?

A: No, eye drop bottle are NOT recyclable in single stream recycling.

Q: Are plastic or metal disposable razors recyclable?

A: No, Plastic and metal disposable razors are NOT recyclable in single stream recycling. Mixed metal and plastic make them unrecyclable. (See Recycling Beyond the Blue Bin Initiative)

Q: Are shaving cream cans recyclable?

A:

- NO: Shaving Creams cans are NOT recyclable in single stream recycling.
- The lid is NOT recyclable in single stream recycling (See Recycling Beyond the Blue Bin Initiative to recycle)

Q: Are disposable toothbrushes recyclable?

A: No, disposable toothbrushes are NOT recyclable in single stream recycling. (See Recycling Beyond the Blue Bin Initiative)

Q: Are toothpaste tubes and bottles recyclable? No, Tooth paste tubes and bottles are NOT recyclable in single stream recycling. It is not possible to remove all remaining toothpaste from inside. (See Recycling Beyond the Blue Bin Initiative)

Q: Are shampoo bottles with a narrow opening recyclable?

A: YES. If there's a recycling symbol 1-7 on they ARE accepted in single stream recycling. Tip: try filling a container with water and squeeze the bottle to allow water in, shake vigorously and squirt out until clean.

Q: Are latex or other medical gloves recyclable under any circumstances, i.e. if they are used for household cleaning (not for medical purposes)?

A: No gloves are NOT recyclable in single stream recycling.

Q: What is NOT accepted for recycling?

A: Flexible plastic tubes, Disposable razors, floss, tooth brushes, toothpaste, coated paper cups, toilet paper, paper towels, QTips, cotton balls, nail polish, feminine hygiene products and cleaning wipes.

Household

Accepted items include: Shipping boxes, cardboard, papers, plastic containers with recycling symbol #1-7. All items must be empty, clean, dry and loose directly in a recycling can.

Q: What paper is included?

A: Accepted recyclable paper/Cardboard: Cardboard boxes, Newspaper, Envelopes, Junk mail, Cards*, Christmas paper*, Phone books, paperback books, Brochures, Magazines, File folders, Poster board and Ream wrappers.

*Not accepted: thermal receipts (contains BPA), metallic paper, electronic singing cards, paper containing glitter or metal

Q: Do staples, tape and labels need to be removed from cardboard boxes? Do boxes need to be broken down?

A:

- No. staples, tape, and labels do NOT need to be removed. Taking tape and labels off is appreciated though.

- Cardboard boxes DO need to be broken down and placed inside your recycle bin
- If the box is too big or there is too many: you may bundle broken down boxes together with twine (Do NOT use tape or plastic string)

Q: What types of mailing/packaging can be recycled (i.e. FedEx, UPS, and USPS paper, cardboard and plastic envelopes, and also insulated with bubble wrap?

A:

- Yes: Cardboard envelopes and boxes ARE accepted in single stream recycling.
- No: Plastic envelopes, bubble envelopes, bubble wrap and air pockets are NOT recyclable in single stream. (See Recycling Beyond the Blue Bin Initiative)
- No: Combo paper covered bubble wrap insulated envelopes. When two or more materials are combined they cannot be recycled as is in single stream, even if one or both are recyclable individually. (See Recycling Beyond the Blue Bin Initiative)

Q: What types of packing materials are recyclable? Does this include bubble wrap and peanuts?

A:

- No: Bubble wrap and air pillows are NOT recyclable in single stream recycling. (See Recycling Beyond the Blue Bin Initiative)
- No: Styrofoam blocks and packing peanuts are NOT recyclable in single stream recycling.

Q: What types of bags are recyclable?

A:

- Yes: Brown paper bags ARE accepted in single stream recycling.
- No: All plastic bags are NOT recyclable in single stream recycling. Plastic bags are a serious problem for the recycling sorting machines. Plastic bags can get caught in the machinery causing delays and damage to equipment. (See Recycling Beyond the Blue Bin Initiative)

Q: Is shredded paper accepted?

A: Yes, shredded papers IS accepted in single stream recycling, but should NOT be loose in the container. As these pieces are too small and will fly away easily. Shredded paper should and MUST be placed in a brown paper bag only!

Q: Are aerosol cans recyclable?

A: NO, aerosol can are NOT accepted anymore in single stream recycling. (See Recycling Beyond the Blue Bin Initiative)

Q: Are batteries, electronics, appliances, toys, scrap metal, pens, markers, tape dispensers, accepted?

A: NO, none of the above is accepted in single stream recycling. NOTE: Refrigerants in fridges/air conditioners are thousands times more potent greenhouse gases than CO₂. When properly recovered, they can be reused or destroyed instead of released. E-waste and hazardous waste are pollutants if trashed and should be recycled in

Q:What is not accepted?

A: Hard cover books, thermal receipts (contains BPA), metallic paper, electronic singing cards, paper containing glitter or metal, tissue paper, lightbulbs, tissues, paper towels, stickers, address labels, bows, mirrors, windows, batteries, electronics, toys, scrap metal, and all aerosol cans.

Q: What is not accepted for recycling? (Email EAC at Havswitch@gmail.com for ways to recycle some of the items below in our Recycling Beyond the Blue Bin Initiative)

- Aerosol cans
- Appliances
- Batteries
- Bubble Wrap
- Car parts
- Christmas Lights
- Clothes and shoes
- Coat Hangers
- Construction Debris
- Diapers
- Electronics
- Electrical Cords
- Fire Extinguisher
- Food Waste
- Food Wrap
- Garden Hoses
- Mobile phones
- Plastic Bags
- Rope
- Rubber Balls
- Sports Equipment
- Stuffed Animals
- Styrofoam
- Syringes/Razor Blades
- Tires
- Tools
- Toys
- Waxy Cardboard
- Wood
- Yard Waste (Accepted in brush pick up collection)

These items should never be mixed in regular recycling. Disposal requires special handling.

- Computers & Electronics
- Fluorescent tubes
- Hazardous waste
- Incandescent light bulbs
- Needles or syringes
- Paint (Call public works for complementary pick up, as we do not want wet paint dripping onto our streets from a trash truck)
- Toxic material containers